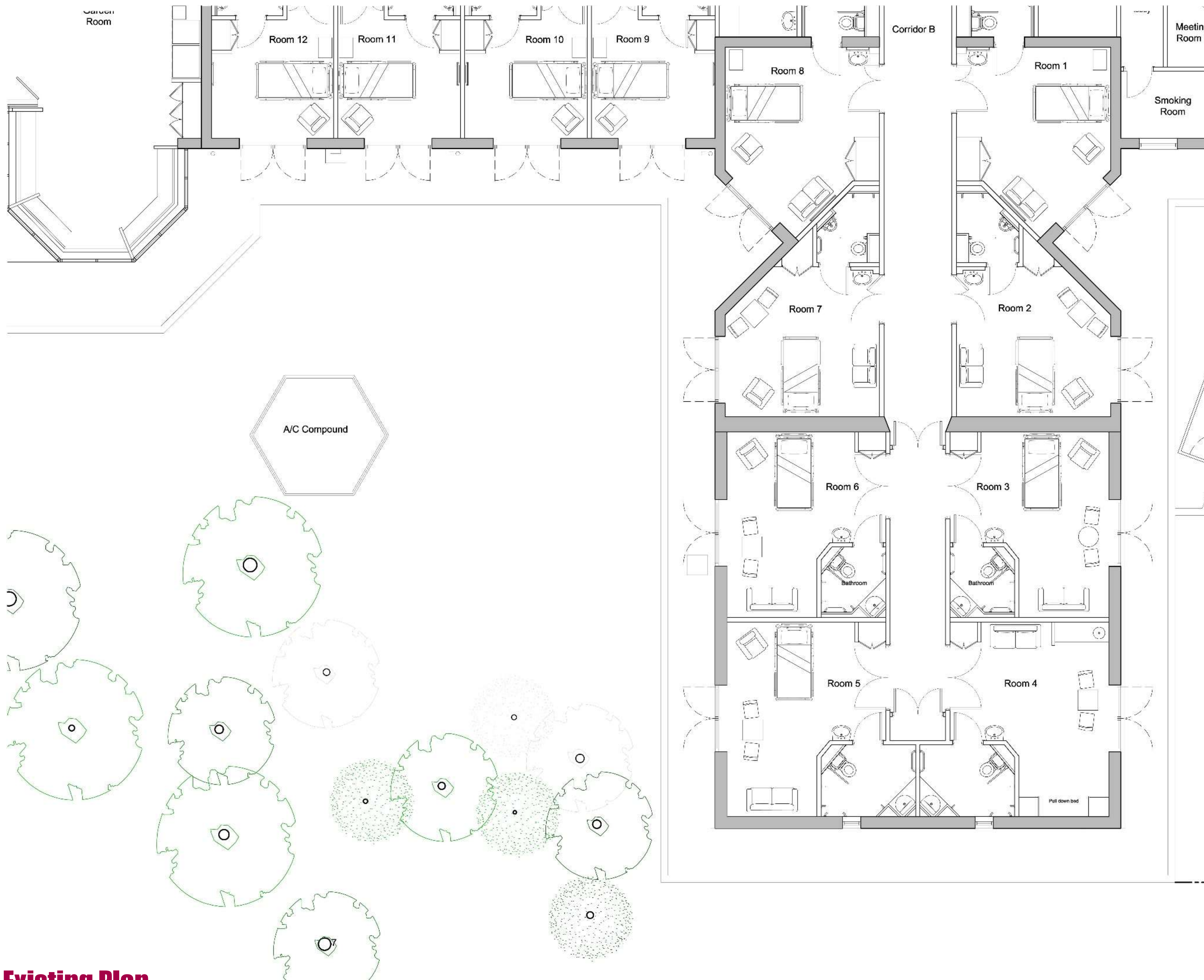




## Existing Gardens





Notes  
Do not scale off this drawing. If in doubt please ask.  
Dimensions must be checked on site where possible

©This drawing must not be reproduced in whole or part without written consent

#### Revisions



Client POW Hospice Pontefract

Project Halfpenny Ln, Pontefract  
WF8 4BG

Title Existing ground floor plan

Dwg. no 4471-E-1

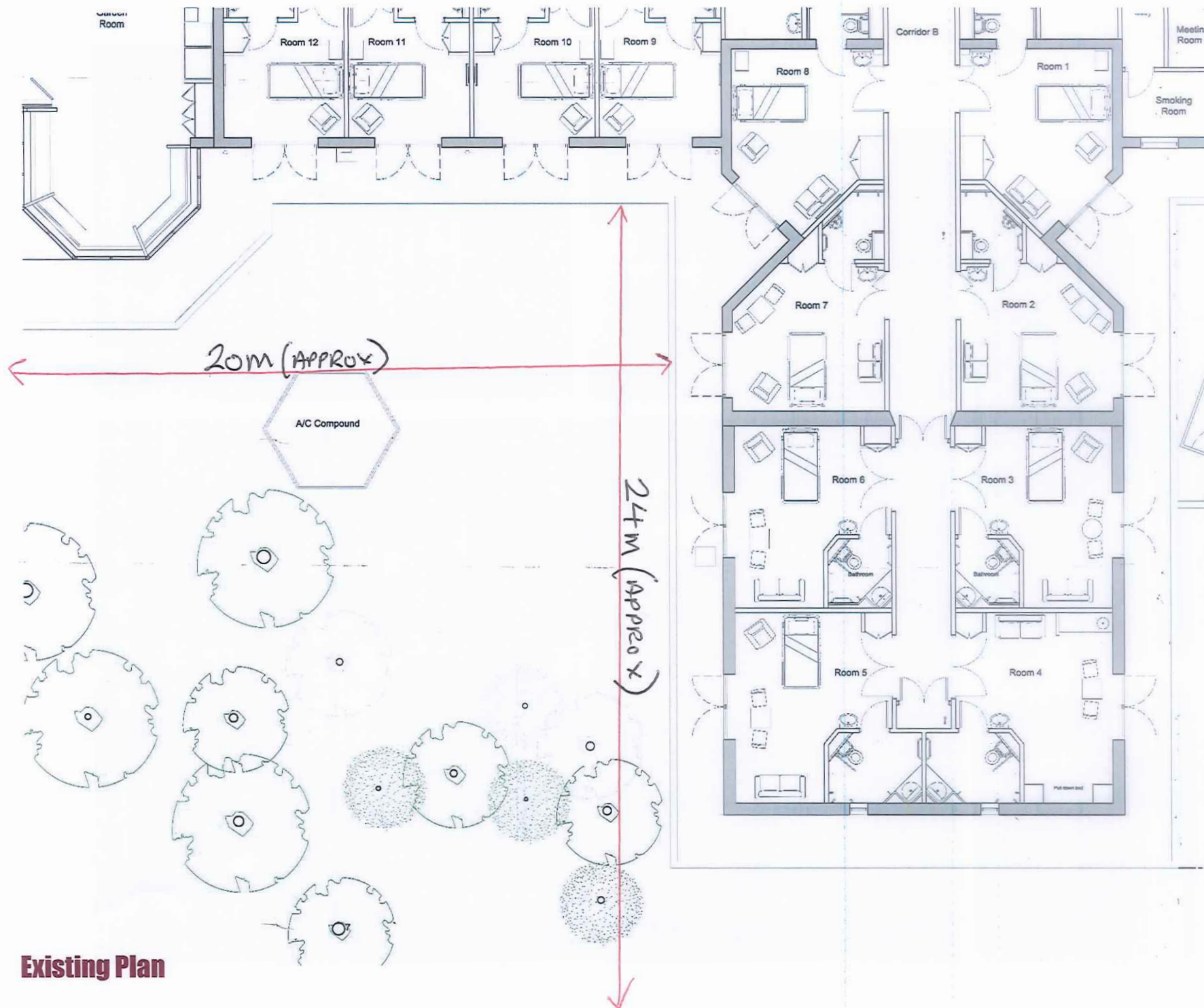
Drawn RH Date 26.2.20

Scale 1:100@A1 Rev

The Studio, 44 Towngate, Mirfield, WF14 8JG  
Tel: 01924 495 595  
Email: admin@Hmia.co.uk Web Site: www.Hmia.co.uk

**Existing Plan**





Notes:  
Do not scale off this drawing, if in doubt please ask.  
Dimensions must be checked on site where possible.  
This drawing must not be reproduced in whole or part without written consent.

<b>HMia</b> Horne McIntosh interior architects	
Client:	POW Hospice Pontefract
Project:	Hallpenny Ln, Pontefract WF8 4BG
Type:	Existing ground floor plan
Drawn by:	4471-E-1
Drawn:	RH Date: 26.2.20
Scale:	1:100@A1
The Studio, 44 Towngate, Wiltshire, Wiltshire, Wiltshire Tel: 01292 495 595 E-mail: admin@hmia.co.uk Web Site: www.hmia.co.uk	







