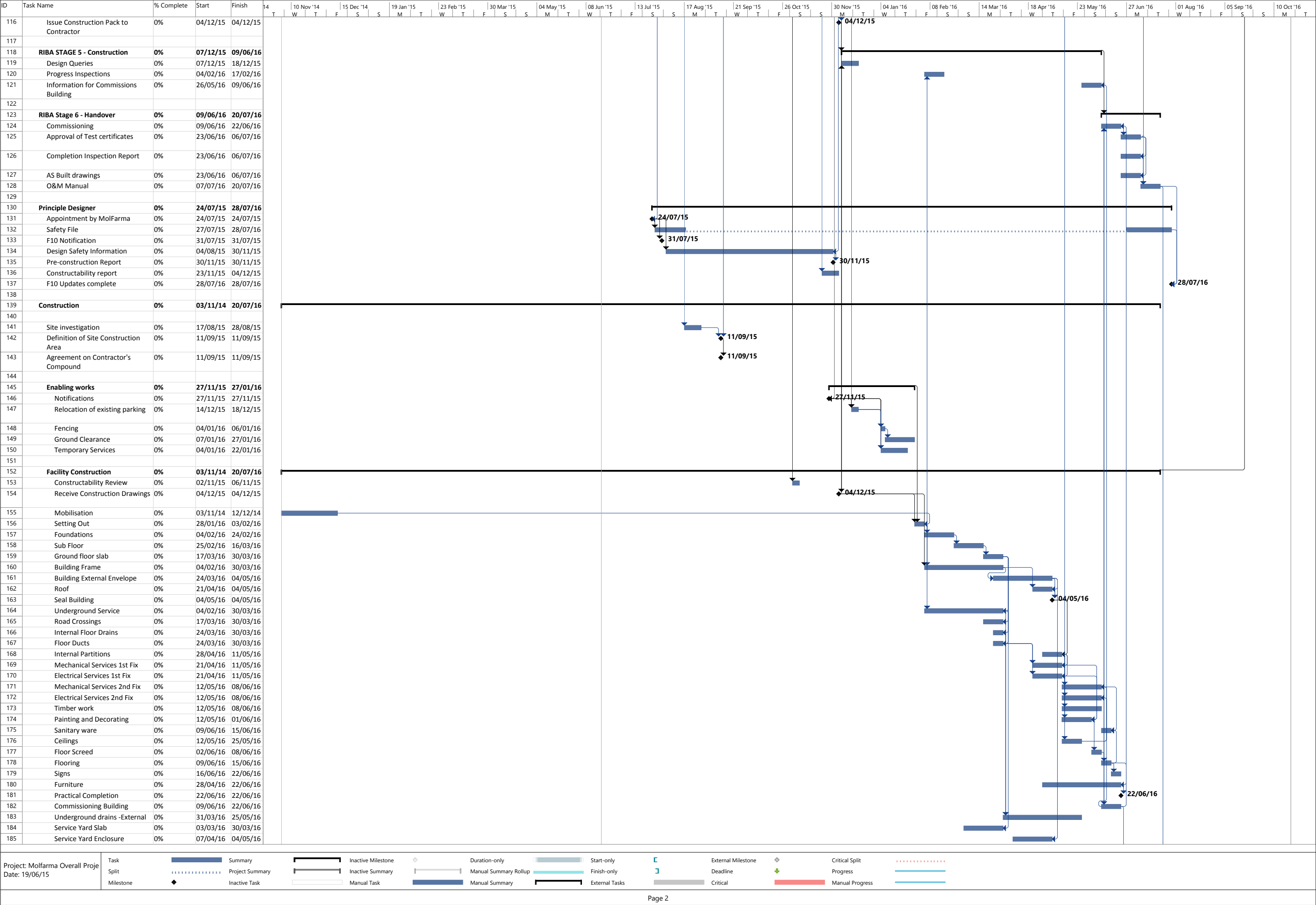


Page 1



Page 2

ID	Task Name	% Complete	Start	Finish	14	10 Nov '14	15 Dec '14	19 Jan '15	23 Feb '15	30 Mar '15	04 May '15	08 Jun '15	13 Jul '15	17 Aug '15	21 Sep '15	26 Oct '15	30 Nov '15	04 Jan '16	08 Feb '16	14 Mar '16	18 Apr '16	23 May '16	27 Jun '16	01 Aug '16	05 Sep '16	10 Oct '16
					T	W	T	F	S	S	M	T	W	T	F	S	S	M	T	W	T	F	S	S	M	T
186	Snag list	0%	23/06/16	06/07/16																			S	M	T	
187	Sign off of building	0%	06/07/16	06/07/16																						
188	Asset Tag	0%	23/06/16	20/07/16																						
189	O&M Manual	0%	20/07/16	20/07/16																						
190																										
191	Molfarma Process	0%	05/06/15	03/08/16																						
263																										
264																										
269																										

Project: Molfarma Overall Proje
Date: 19/06/15

Task

Split

Milestone

Summary

Project Summary

Inactive Task

Inactive Milestone

Inactive Summary

Manual Task

Duration-only

Manual Summary Rollup

Manual Summary

Start-only

Finish-only

External Tasks

External Milestone

Deadline

Critical

Critical Split

Progress

Manual Progress

Page 3