



the **play inspection** company
the safest hands around playgrounds

Annual Inspection

West Swindon Parish Council

Claypit/Plattes

Access from Cartwright Drive, Swindon, Wiltshire, SN5 5RB



Unit 5 Glenmore Business Park, Blackhill Road, Poole, Dorset, BH16 6NL
t - 01202 590675 f - 0870 428 3942 e - info@playinspections.co.uk

www.playinspections.co.uk

Powered by:

**the play ►
inspection app**
by the play inspection company

Risk Assessment Matrix

Probability>>

5	Very High	VL	L	M	H	VH
4	High	VL	L	M	H	H
3	Moderate	VL	L	L	M	M
2	Low	VL	L	L	L	L
1	Very Low	VL	VL	VL	VL	VL
		Very Low	Low	Moderate	High	Very High
		1	2	3	4	5

Severity>>

Probability Score	Probability of Occurrence
1 – Very Low	No significant probability; lightning Strike
2 – Low	Minimal probability of occurrence. Requires significant factor or combination of factors to take place. Significant increase in intensity of use.
3 – Moderate	Moderate probability. An added factor is needed to cause an accident. Designed use is unlikely to be problematic, additional factor is required. Covers or guards loose, removed or vandalised. Absent guard rail or barrier at high levels
4 – High	High probability. Accident is probable without any added factor. Glass contaminant in loose fill surface. Exposed sharp edges on equipment.
5 – Very High	Very High probability. If the situation is not addressed an accident is almost certain. Severely worn chains/shackles. Severely damaged surfacing within impact area

Severity Score	Severity of injury
1 – Very Low	No injury likely e.g. damaged or soiled clothing, minor bruising
2 – Low	Minor injury – Laceration or bruising requiring first aid only
3 – Moderate	Injury requiring medical intervention e.g. laceration requiring stitches, sprain, fracture of small bones of hand or foot.
4 – High	Serious injury including hospitalisation for observation e.g. concussion, fracture of long bones of leg/arm, back/neck injuries, fractured skull.
5 – Very High	Severe injury involving the potential for permanent disability e.g. amputation, loss of sight, spinal injury, fatality.

NB: When we inspect we only see a snapshot of the current condition of the equipment. It is the operator's responsibility to ensure that there is a continuing level of maintenance to keep the equipment in good working order and the site fit for use.

BS EN 1176:2008 Parts 1-11 (Playground equipment and surfacing)
BS EN 14974 (Facilities for users of roller sports equipment)
BS EN 15312 (Free access multi-sports equipment)
BS 10075 (Specification for Parkour Equipment)

Site Information

Inspection Ref: 519947

Site Ref: 47869

Customer Order No: None

Annual Inspection - 19 December 2017 at 10:20 Inspector: Leon Pope RPII Annual Inspector

Risk Assessment: **8 - Low Risk**



Location: The site is located in an area of public open space and is overlooked by a number of properties in the local community.

Disabled Access: Generally accessible; an area accessible to most but not all people even when help is at hand.



2 - Very Low Risk

Item: Ancillary Items - Sign
Manufacturer: Owner/Operator
Surface Type: N/A
Equipment Compliance: N/A
Surface Area Compliance: N/A
Ref/Part Number:
Total Findings: 1



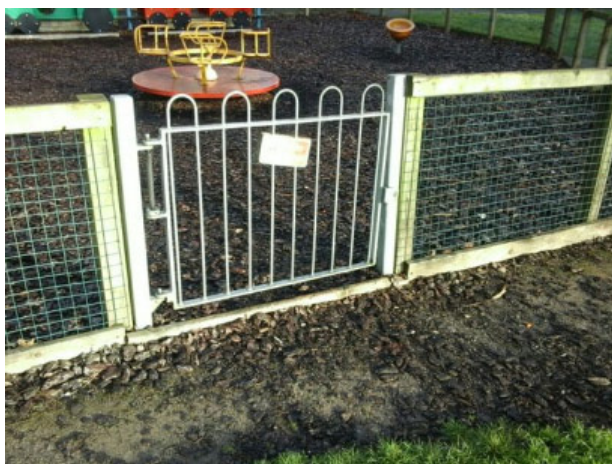
Finding 1

This item is satisfactory - no work required



8 - Low Risk

Item: Ancillary Items - Gate - Self Closing
Manufacturer: Owner/Operator
Surface Type: N/A
Equipment Compliance: N/A
Surface Area Compliance: N/A
Ref/Part Number:
Total Findings: 2



Finding 1

The gate is closing too quickly (less than 4 seconds) - Take corrective action to ensure that the gate closes in 4-8 seconds

Finding 2

There are trip hazards at the entrance / exit to the play area - Reinstate surrounding surfaces to level to remove the trip points



8 - Low Risk

Item: Ancillary Items - Fence - Timber & Mesh Infill
Manufacturer: Owner/Operator
Surface Type: N/A
Equipment Compliance: N/A
Surface Area Compliance: N/A
Ref/Part Number:
Total Findings: 2



Finding 1

There are areas or parts of the timber on the structure that have rotted - Replace all affected timbers

Finding 2

There are a number of loose posts around the fence - Monitor for any further deterioration and reset as required



4 - Very Low Risk

Item: Ancillary Items - Bench
Manufacturer: Owner/Operator
Surface Type: N/A
Equipment Compliance: N/A
Surface Area Compliance: N/A
Ref/Part Number:
Total Findings: 1



Finding 1

This item is satisfactory - no work required



8 - Low Risk

Item: Ancillary Items - Palisade Logs
Manufacturer: Owner/Operator
Surface Type: N/A
Equipment Compliance: N/A
Surface Area Compliance: N/A
Ref/Part Number:
Total Findings: 2



Finding 1

There are areas or parts of the timber on the structure that have rotted - Replace all affected timbers

Finding 2

There are missing posts - Replace as required



8 - Low Risk

Item: Ancillary Items - Sleepers
Manufacturer: Owner/Operator
Surface Type: N/A
Equipment Compliance: N/A
Surface Area Compliance: N/A
Ref/Part Number:
Total Findings: 1



Finding 1

There are areas or parts of the timber on the structure that have rotted - Replace all affected timbers



8 - Low Risk

Item: Ancillary Items - Site General
Manufacturer: Owner/Operator
Surface Type: N/A
Equipment Compliance: N/A
Surface Area Compliance: N/A
Ref/Part Number:
Total Findings: 6



Finding 1

There are gaps opening between the wet pour surfacing and the edging surround or between the joints in the surfacing - Monitor for any further deterioration and repair as required

Finding 2

There is algae or moss growth on the wet pour surfacing resulting in slippery conditions - Clean and treat appropriately

Finding 3

The wet pour surfacing is lifting at the edges and creating trip points - Repair perimeter of surfacing to remove trip points

Finding 4

There are trip hazards at the edges of the wet pour surfacing - Reinstate surrounding surface levels to remove the trip points

Finding 5

There is excrement on site - Clean and maintain area

Finding 6

There is a vast amount of leaf litter within the play area - Clean and maintain area



6 - Low Risk

Item: Swings - 1 Bay Swing
Manufacturer: S M P (Playgrounds Ltd)
Surface Type: Bark Mulch
Equipment Compliance: No
Surface Area Compliance: Yes
Ref/Part Number:
Total Findings: 6



Finding 1

There are caps missing from the underside of the seats - Replace missing caps under the seats

Finding 2

The item is slightly loose in its foundations - Monitor for any further deterioration and repair as required

Finding 3

The seat has minor damage or wear - Monitor for any further deterioration and replace as required

Finding 4

There is some notable evidence of chain wear - Monitor for any further deterioration and replace when 40% worn

Finding 5

There is some wear to the connecting links - Monitor for any further deterioration and replace when 40% worn

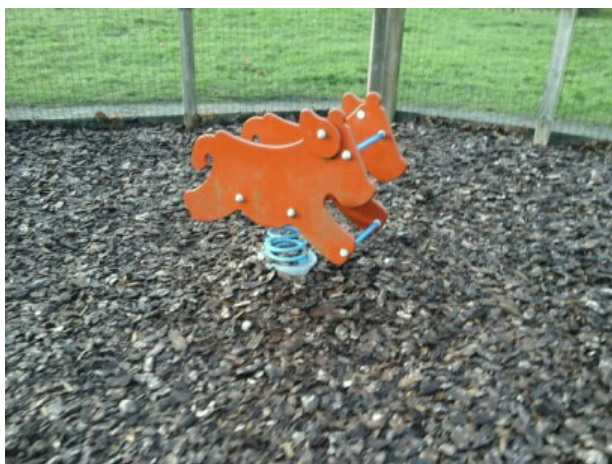
Finding 6

The chain openings are in excess of the 8.6mm as recommended by BS EN 1176 - Monitor use and replace with compliant chains during next maintenance cycle.



6 - Low Risk

Item: Rocking Equipment - Spring Cow
Manufacturer: Not Identified
Surface Type: Bark Mulch
Equipment Compliance: Yes
Surface Area Compliance: Yes
Ref/Part Number:
Total Findings: 1



Finding 1

The paintwork on the spring has been damaged or worn exposing the metal underneath which is rusting - Treat any rusting components and repaint



6 - Low Risk

Item: Rocking Equipment - Spring See-Saw
Manufacturer: Kompan Ltd
Surface Type: Bark Mulch
Equipment Compliance: Yes
Surface Area Compliance: Yes
Ref/Part Number:
Total Findings: 1



Finding 1

There is/are bolt cap covers missing or damaged on the item - Replace missing or damaged bolt cap covers



6 - Low Risk

Item: Rotor Play - Roundabout
Manufacturer: Record RSS
Surface Type: Bark Mulch
Equipment Compliance: No
Surface Area Compliance: Yes
Ref/Part Number:
Total Findings: 1



Finding 1

The distance between the underside of the roundabout platform and the playing surface is in excess of 110mm and contravenes the requirements of BS EN 1176 Part 5 which requires that the distance be maintained between 60mm-110mm - for the entire circumference of the roundabout - Monitor use



4 - Very Low Risk

Item: Rotor Play - Spinner Bowl
Manufacturer: Kompan Ltd
Surface Type: Bark Mulch
Equipment Compliance: Yes
Surface Area Compliance: Yes
Ref/Part Number:
Total Findings: 1



Finding 1

This item is satisfactory - no work required



4 - Very Low Risk

Item: Activity Equipment - Train
Manufacturer: Kompan Ltd
Surface Type: Bark Mulch
Equipment Compliance: Yes
Surface Area Compliance: Yes
Ref/Part Number:
Total Findings: 2



Finding 1

There is some graffiti present on site - Remove the graffiti

Finding 2

Parts of the timber are rough or splintered - Remove all rough or sharp edges and repaint affected areas



8 - Low Risk

Item: Activity Equipment - Climbing Frame
Manufacturer: Not Identified
Surface Type: Bark Mulch
Equipment Compliance: No
Surface Area Compliance: Yes
Ref/Part Number:
Total Findings: 4



Finding 1

There is algae or moss on the surface of the equipment - Clean and treat appropriately

Finding 2

A number of fixing(s) have worked loose - Secure all loose fixings

Finding 3

The paintwork on this item has been damaged or worn exposing the metal underneath which is rusting - Treat any rusting components and repaint

Finding 4

The chain openings are in excess of the 8.6mm as recommended by BS EN 1176 - Monitor use and replace with compliant chains during next maintenance cycle.



6 - Low Risk

Item: Activity Equipment - Climbing Frame
Manufacturer: Record RSS
Surface Type: Wet Pour
Equipment Compliance: Yes
Surface Area Compliance: Yes
Ref/Part Number:
Total Findings: 2



Finding 1

The framework join is not flush - Monitor for any further deterioration and repair as required

Finding 2

There is some minor damage to the framework - Monitor for any further deterioration and repair as required



8 - Low Risk

Item: Activity Equipment - Spring Balance Beam
Manufacturer: Not Identified
Surface Type: Bark Mulch
Equipment Compliance: Yes
Surface Area Compliance: Yes
Ref/Part Number:
Total Findings: 2



Finding 1

A number of spring mount fixing(s) have worked loose - Secure all loose fixings

Finding 2

There is/are bolt cap covers missing or damaged on the item - Replace missing or damaged bolt cap covers



6 - Low Risk

Item: Rocking Equipment - Three Way Springer
Manufacturer: Kompan Ltd
Surface Type: Wet Pour
Equipment Compliance: Yes
Surface Area Compliance: Yes
Ref/Part Number:
Total Findings: 1



Finding 1

The paintwork on the spring has been damaged or worn exposing the metal underneath which is rusting - Treat any rusting components and repaint



6 - Low Risk

Item: Rotor Play - Supanova
Manufacturer: Kompan Ltd
Surface Type: Wet Pour
Equipment Compliance: Yes
Surface Area Compliance: Yes
Ref/Part Number:
Total Findings: 2



Finding 1

There is some minor damage to the item - Monitor for any further deterioration and remove any rough or sharp edges

Finding 2

There is/are bolt cap covers missing or damaged on the item - Replace missing or damaged bolt cap covers



4 - Very Low Risk

Item: Rocking Equipment - See Saw
Manufacturer: Kompan Ltd
Surface Type: Wet Pour
Equipment Compliance: Yes
Surface Area Compliance: Yes
Ref/Part Number:
Total Findings: 1



Finding 1

This item is satisfactory - no work required



8 - Low Risk

Item: Rocking Equipment - Spring See-Saw
Manufacturer: Kompan Ltd
Surface Type: Wet Pour
Equipment Compliance: No
Surface Area Compliance: Yes
Ref/Part Number:
Total Findings: 6



Finding 1

The paintwork on the spring has been damaged or worn exposing the metal underneath which is rusting - Treat any rusting components and repaint

Finding 2

The paintwork on this item has been damaged or worn exposing the metal underneath which is rusting - Treat any rusting components and repaint

Finding 3

There is algae or moss on the surface of the equipment - Clean and treat appropriately

Finding 4

A number of fixing(s) have worked loose and the handgrip is not secured - Secure all loose fixings

Finding 5




The spring mounting plates are slightly loose in the ground - Monitor for any further deterioration and repair as required

Finding 6

The safety surface under or around this unit has been damaged - Monitor for any further deterioration and repair as required

Findings Information

 6 - Low Risk (Finding 1)			
Item:	Ancillary Items - Gate - Self Closing	Risk Level:	L - Low Risk
Manufacturer:	Owner/Operator	Surface:	N/A
			
Finding:	The gate is closing too quickly (less than 4 seconds)		Action: Take corrective action to ensure that the gate closes in 4-8 seconds

 8 - Low Risk (Finding 2)			
Item:	Ancillary Items - Gate - Self Closing	Risk Level:	L - Low Risk
Manufacturer:	Owner/Operator	Surface:	N/A
			
Finding:	There are trip hazards at the entrance / exit to the play area		Action: Reinstate surrounding surfaces to level to remove the trip points



8 - Low Risk (Finding 1)

Item: Ancillary Items - Fence - Timber & Mesh Infill

Risk Level: L - Low Risk

Manufacturer: Owner/Operator

Surface: N/A



Finding: There are areas or parts of the timber on the structure that have rotted

Action: Replace all affected timbers



6 - Low Risk (Finding 2)

Item: Ancillary Items - Fence - Timber & Mesh Infill

Risk Level: L - Low Risk

Manufacturer: Owner/Operator

Surface: N/A



Finding: There are a number of loose posts around the fence

Action: Monitor for any further deterioration and reset as required



8 - Low Risk (Finding 1)

Item: Ancillary Items - Palisade Logs
Manufacturer: Owner/Operator

Risk Level: L - Low Risk
Surface: N/A



Finding: There are areas or parts of the timber on the structure that have rotted

Action: Replace all affected timbers



6 - Low Risk (Finding 2)

Item: Ancillary Items - Palisade Logs
Manufacturer: Owner/Operator

Risk Level: L - Low Risk
Surface: N/A



Finding: There are missing posts

Action: Replace as required



8 - Low Risk (Finding 1)

Item: Ancillary Items - Sleepers
Manufacturer: Owner/Operator

Risk Level: L - Low Risk
Surface: N/A



Finding: There are areas or parts of the timber on the structure that have rotted

Action: Replace all affected timbers



6 - Low Risk (Finding 1)

Item: Ancillary Items - Site General
Manufacturer: Owner/Operator

Risk Level: L - Low Risk
Surface: N/A



Finding: There are gaps opening between the wet pour surfacing and the edging surround or between the joints in the surfacing

Action: Monitor for any further deterioration and repair as required



8 - Low Risk (Finding 2)

Item: Ancillary Items - Site General
Manufacturer: Owner/Operator

Risk Level: L - Low Risk
Surface: N/A



Finding: There is algae or moss growth on the wet pour surfacing resulting in slippery conditions

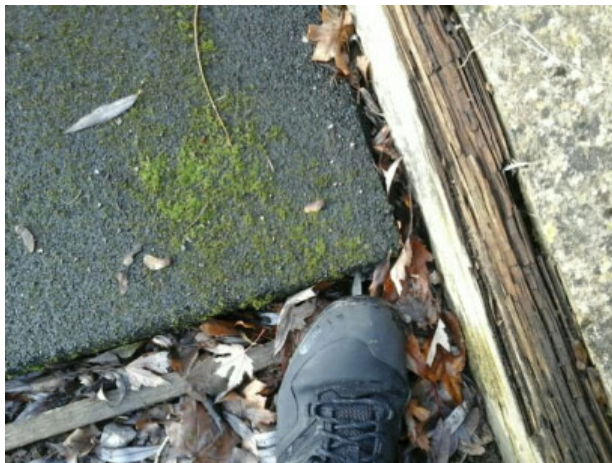
Action: Clean and treat appropriately



8 - Low Risk (Finding 3)

Item: Ancillary Items - Site General
Manufacturer: Owner/Operator

Risk Level: L - Low Risk
Surface: N/A



Finding: The wet pour surfacing is lifting at the edges and creating trip points

Action: Repair perimeter of surfacing to remove trip points



8 - Low Risk (Finding 4)

Item: Ancillary Items - Site General
Manufacturer: Owner/Operator

Risk Level: L - Low Risk
Surface: N/A



Finding: There are trip hazards at the edges of the wet pour surfacing
Action: Reinstate surrounding surface levels to remove the trip points



5 - Very Low Risk (Finding 5)

Item: Ancillary Items - Site General
Manufacturer: Owner/Operator

Risk Level: V - Very Low Risk
Surface: N/A



Finding: There is excrement on site
Action: Clean and maintain area



6 - Low Risk (Finding 6)

Item: Ancillary Items - Site General
Manufacturer: Owner/Operator

Risk Level: L - Low Risk
Surface: N/A



Finding: There is a vast amount of leaf litter within the play area

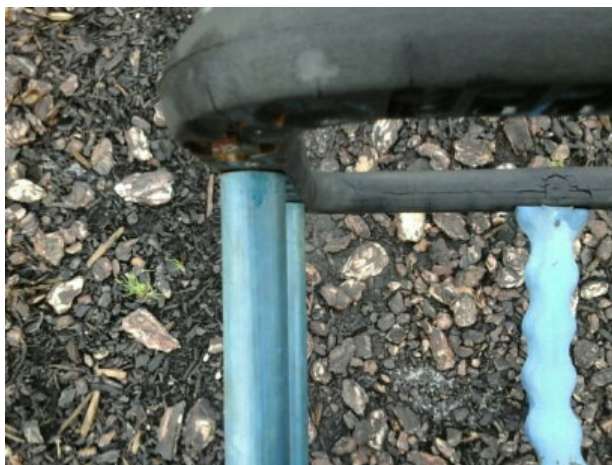
Action: Clean and maintain area



6 - Low Risk (Finding 1)

Item: Swings - 1 Bay Swing
Manufacturer: S M P (Playgrounds Ltd)

Risk Level: L - Low Risk
Surface: Bark Mulch



Finding: There are caps missing from the underside of the seats

Action: Replace missing caps under the seats



6 - Low Risk (Finding 2)

Item: Swings - 1 Bay Swing
Manufacturer: S M P (Playgrounds Ltd)

Risk Level: L - Low Risk
Surface: Bark Mulch



Finding: The item is slightly loose in its foundations

Action: Monitor for any further deterioration and repair as required



6 - Low Risk (Finding 3)

Item: Swings - 1 Bay Swing
Manufacturer: S M P (Playgrounds Ltd)

Risk Level: L - Low Risk
Surface: Bark Mulch



Finding: The seat has minor damage or wear

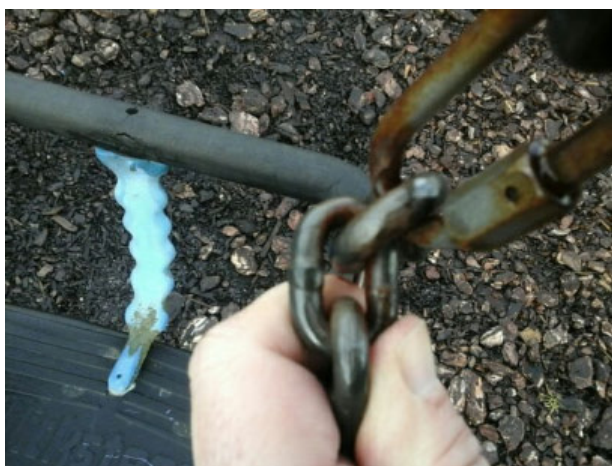
Action: Monitor for any further deterioration and replace as required



6 - Low Risk (Finding 4)

Item: Swings - 1 Bay Swing
Manufacturer: S M P (Playgrounds Ltd)

Risk Level: L - Low Risk
Surface: Bark Mulch



Finding: There is some notable evidence of chain wear

Action: Monitor for any further deterioration and replace when 40% worn



6 - Low Risk (Finding 5)

Item: Swings - 1 Bay Swing
Manufacturer: S M P (Playgrounds Ltd)

Risk Level: L - Low Risk
Surface: Bark Mulch



Finding: There is some wear to the connecting links

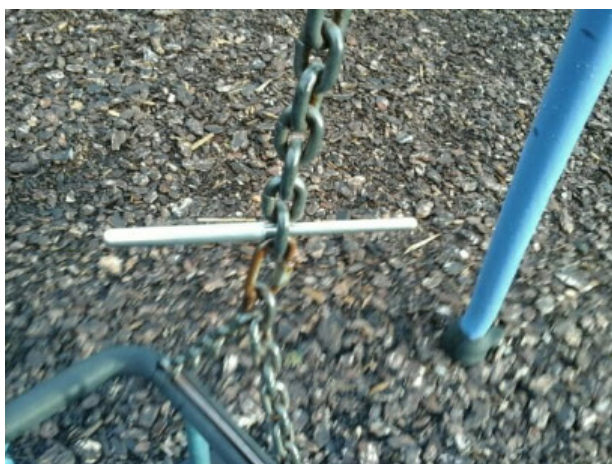
Action: Monitor for any further deterioration and replace when 40% worn



4 - Very Low Risk (Finding 6)

Item: Swings - 1 Bay Swing
Manufacturer: S M P (Playgrounds Ltd)

Risk Level: V - Very Low Risk
Surface: Bark Mulch



Finding: The chain openings are in excess of the 8.6mm as recommended by BS EN 1176

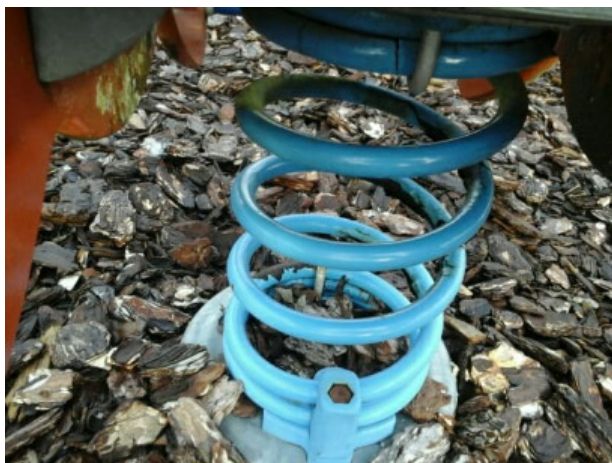
Action: Monitor use and replace with compliant chains during next maintenance cycle.



6 - Low Risk (Finding 1)

Item: Rocking Equipment - Spring Cow
Manufacturer: Not Identified

Risk Level: L - Low Risk
Surface: Bark Mulch



Finding: The paintwork on the spring has been damaged or worn exposing the metal underneath which is rusting

Action: Treat any rusting components and repaint



6 - Low Risk (Finding 1)

Item: Rocking Equipment - Spring See-Saw
Manufacturer: Kompan Ltd

Risk Level: L - Low Risk
Surface: Bark Mulch



Finding: There is/are bolt cap covers missing or damaged on the item

Action: Replace missing or damaged bolt cap covers



6 - Low Risk (Finding 1)

Item: Rotor Play - Roundabout
Manufacturer: Record RSS

Risk Level: L - Low Risk
Surface: Bark Mulch



Finding: The distance between the underside of the roundabout platform and the playing surface is in excess of 110mm and contravenes the requirements of BS EN 1176 Part 5 which requires that the distance be maintained between 60mm-110mm - for the entire circumference of the roundabout

Action: Monitor use



2 - Very Low Risk (Finding 1)

Item: Activity Equipment - Train
Manufacturer: Kompan Ltd

Risk Level: V - Very Low Risk
Surface: Bark Mulch



Finding: There is some graffiti present on site

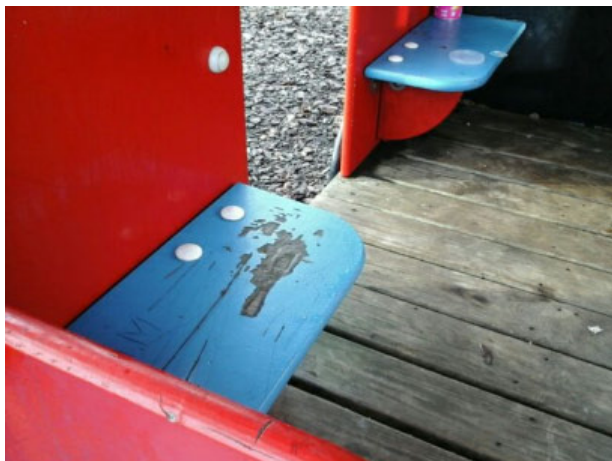
Action: Remove the graffiti



4 - Very Low Risk (Finding 2)

Item: Activity Equipment - Train
Manufacturer: Kompan Ltd

Risk Level: V - Very Low Risk
Surface: Bark Mulch



Finding: Parts of the timber are rough or splintered

Action: Remove all rough or sharp edges and repaint affected areas



8 - Low Risk (Finding 1)

Item: Activity Equipment - Climbing Frame
Manufacturer: Not Identified

Risk Level: L - Low Risk
Surface: Bark Mulch



Finding: There is algae or moss on the surface of the equipment

Action: Clean and treat appropriately



6 - Low Risk (Finding 2)

Item: Activity Equipment - Climbing Frame
Manufacturer: Not Identified

Risk Level: L - Low Risk
Surface: Bark Mulch



Finding: A number of fixing(s) have worked loose

Action: Secure all loose fixings



6 - Low Risk (Finding 3)

Item: Activity Equipment - Climbing Frame
Manufacturer: Not Identified

Risk Level: L - Low Risk
Surface: Bark Mulch



Finding: The paintwork on this item has been damaged or worn exposing the metal underneath which is rusting

Action: Treat any rusting components and repaint



4 - Very Low Risk (Finding 4)

Item: Activity Equipment - Climbing Frame
Manufacturer: Not Identified

Risk Level: V - Very Low Risk
Surface: Bark Mulch



Finding: The chain openings are in excess of the 8.6mm as recommended by BS EN 1176

Action: Monitor use and replace with compliant chains during next maintenance cycle.



6 - Low Risk (Finding 1)

Item: Activity Equipment - Climbing Frame
Manufacturer: Record RSS

Risk Level: L - Low Risk
Surface: Wet Pour



Finding: The framework join is not flush

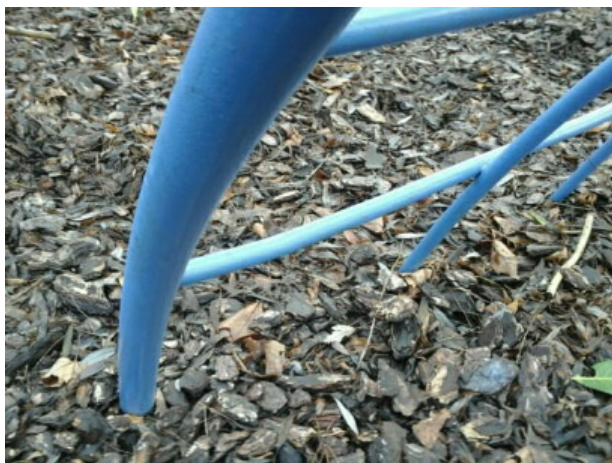
Action: Monitor for any further deterioration and repair as required



6 - Low Risk (Finding 2)

Item: Activity Equipment - Climbing Frame
Manufacturer: Record RSS

Risk Level: L - Low Risk
Surface: Wet Pour



Finding: There is some minor damage to the framework

Action: Monitor for any further deterioration and repair as required



8 - Low Risk (Finding 1)

Item: Activity Equipment - Spring Balance Beam

Risk Level: L - Low Risk

Manufacturer: Not Identified

Surface: Bark Mulch



Finding: A number of spring mount fixing(s) have worked loose

Action: Secure all loose fixings



6 - Low Risk (Finding 2)

Item: Activity Equipment - Spring Balance Beam

Risk Level: L - Low Risk

Manufacturer: Not Identified

Surface: Bark Mulch



Finding: There is/are bolt cap covers missing or damaged on the item

Action: Replace missing or damaged bolt cap covers



6 - Low Risk (Finding 1)

Item: Rocking Equipment - Three Way Springer

Manufacturer: Kompan Ltd

Risk Level: L - Low Risk

Surface: Wet Pour



Finding: The paintwork on the spring has been damaged or worn exposing the metal underneath which is rusting

Action: Treat any rusting components and repaint



6 - Low Risk (Finding 1)

Item: Rotor Play - Supanova

Manufacturer: Kompan Ltd

Risk Level: L - Low Risk

Surface: Wet Pour



Finding: There is some minor damage to the item

Action: Monitor for any further deterioration and remove any rough or sharp edges



6 - Low Risk (Finding 2)

Item: Rotor Play - Supanova
Manufacturer: Kompan Ltd

Risk Level: L - Low Risk
Surface: Wet Pour



Finding: There is/are bolt cap covers missing or damaged on the item

Action: Replace missing or damaged bolt cap covers



6 - Low Risk (Finding 1)

Item: Rocking Equipment - Spring See-Saw
Manufacturer: Kompan Ltd

Risk Level: L - Low Risk
Surface: Wet Pour



Finding: The paintwork on the spring has been damaged or worn exposing the metal underneath which is rusting

Action: Treat any rusting components and repaint



6 - Low Risk (Finding 2)

Item: Rocking Equipment - Spring See-Saw
Manufacturer: Kompan Ltd

Risk Level: L - Low Risk
Surface: Wet Pour



Finding: The paintwork on this item has been damaged or worn exposing the metal underneath which is rusting

Action: Treat any rusting components and repaint



8 - Low Risk (Finding 3)

Item: Rocking Equipment - Spring See-Saw
Manufacturer: Kompan Ltd

Risk Level: L - Low Risk
Surface: Wet Pour



Finding: There is algae or moss on the surface of the equipment

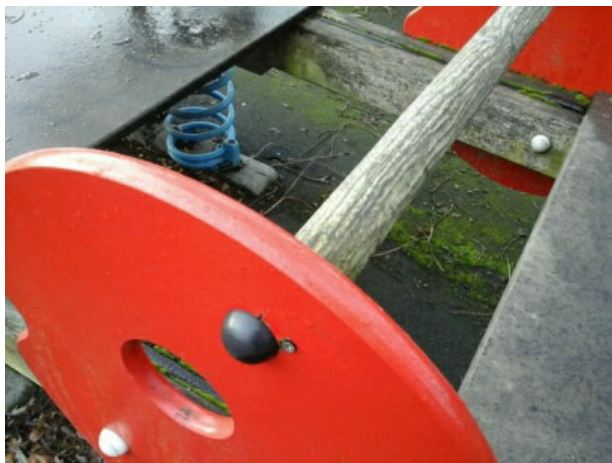
Action: Clean and treat appropriately



6 - Low Risk (Finding 4)

Item: Rocking Equipment - Spring See-Saw
Manufacturer: Kompan Ltd

Risk Level: L - Low Risk
Surface: Wet Pour



Finding: A number of fixing(s) have worked loose and the handgrip is not secured

Action: Secure all loose fixings



6 - Low Risk (Finding 5)

Item: Rocking Equipment - Spring See-Saw
Manufacturer: Kompan Ltd

Risk Level: L - Low Risk
Surface: Wet Pour



Finding: The spring mounting plates are slightly loose in the ground

Action: Monitor for any further deterioration and repair as required



4 - Very Low Risk (Finding 6)

Item: Rocking Equipment - Spring See-Saw
Manufacturer: Kompan Ltd

Risk Level: V - Very Low Risk
Surface: Wet Pour



Finding: The safety surface under or around this unit has been damaged

Action: Monitor for any further deterioration and repair as required