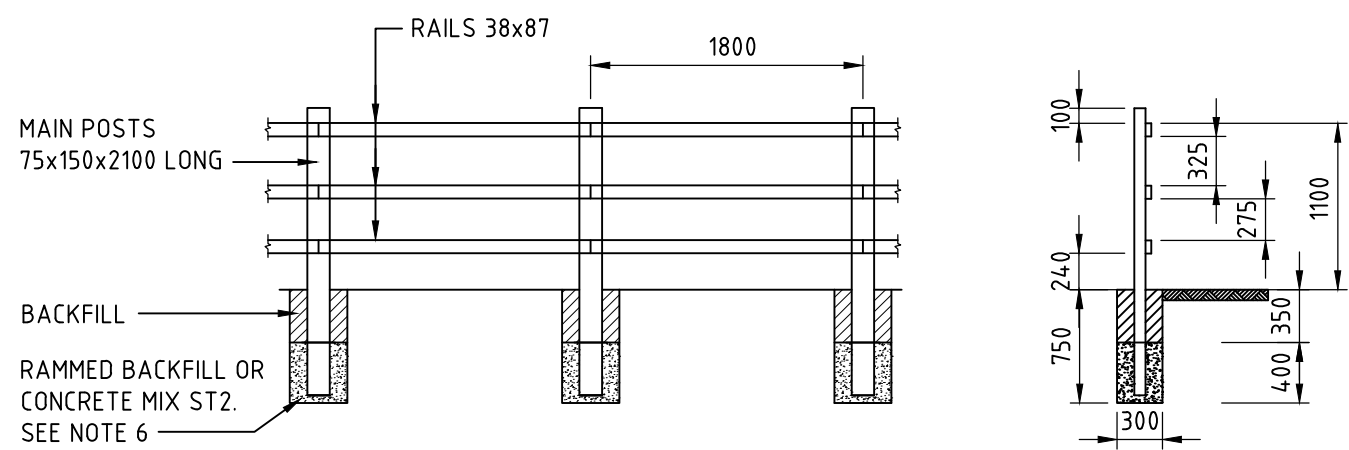


LONGITUDINAL SECTION ACCESS ROAD TO EXISTING FOOTPATH

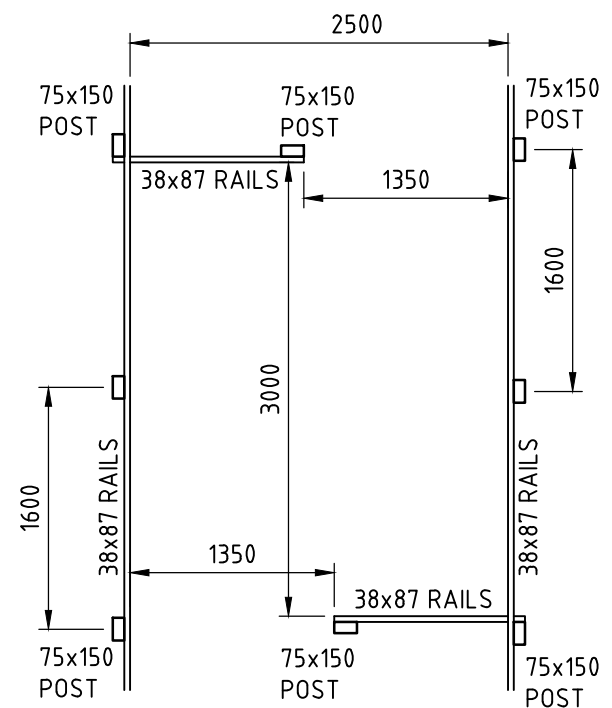
SCALE 1:50 HORIZONTAL.
1:50 VERTICAL.



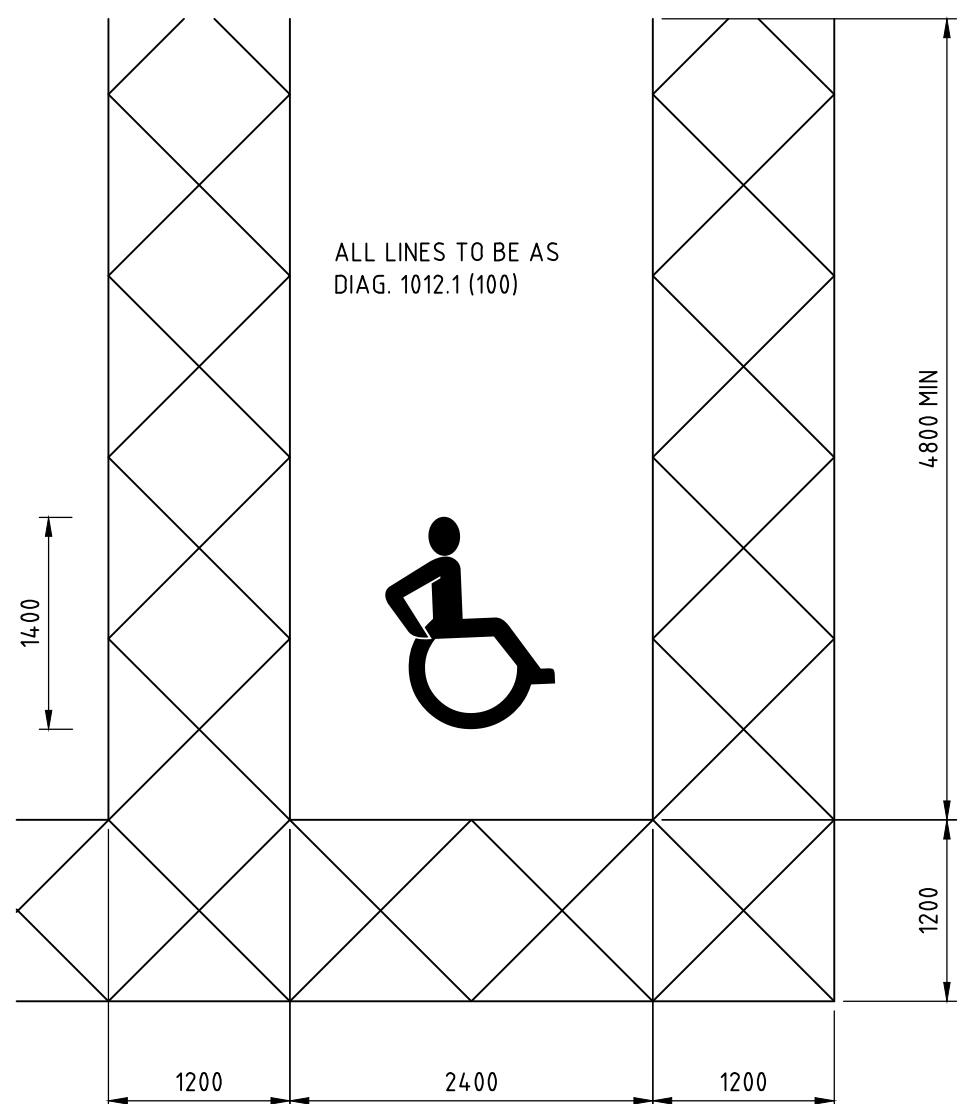
ELEVATION

SECTION THROUGH CENTRE LINE OF MAIN POSTS

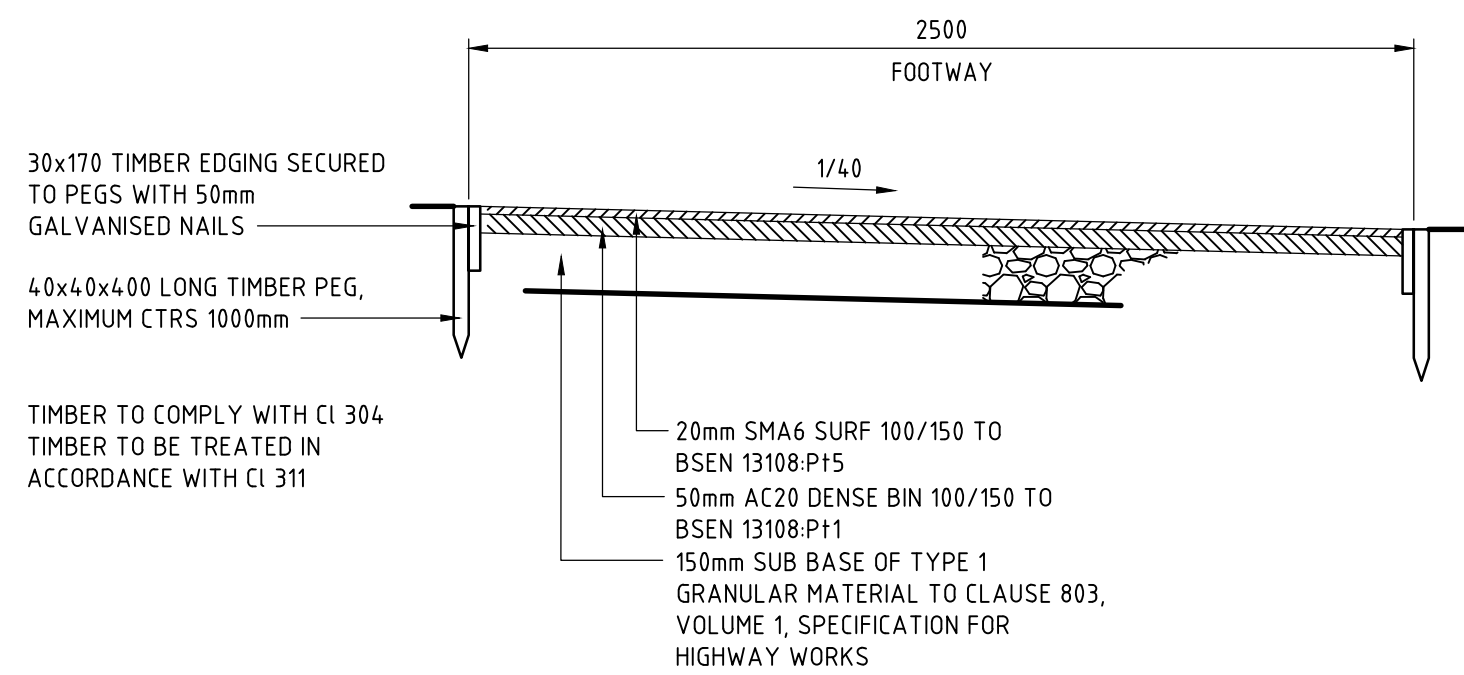
3 RAIL FENCE DETAIL



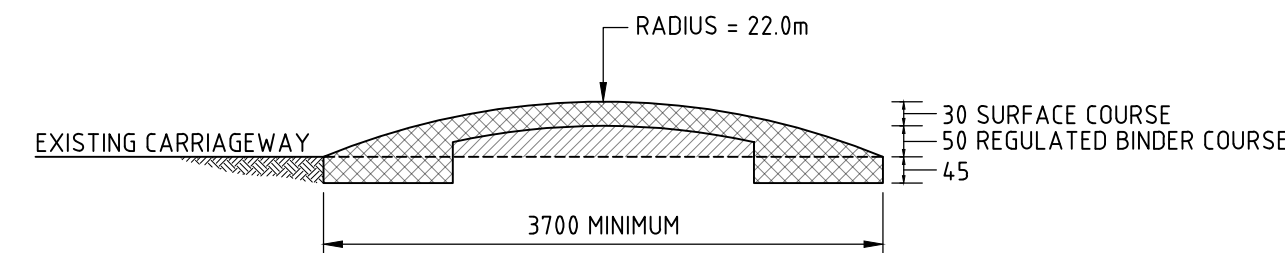
STAGGERED PEDESTRIAN BARRIER - PLAN VIEW



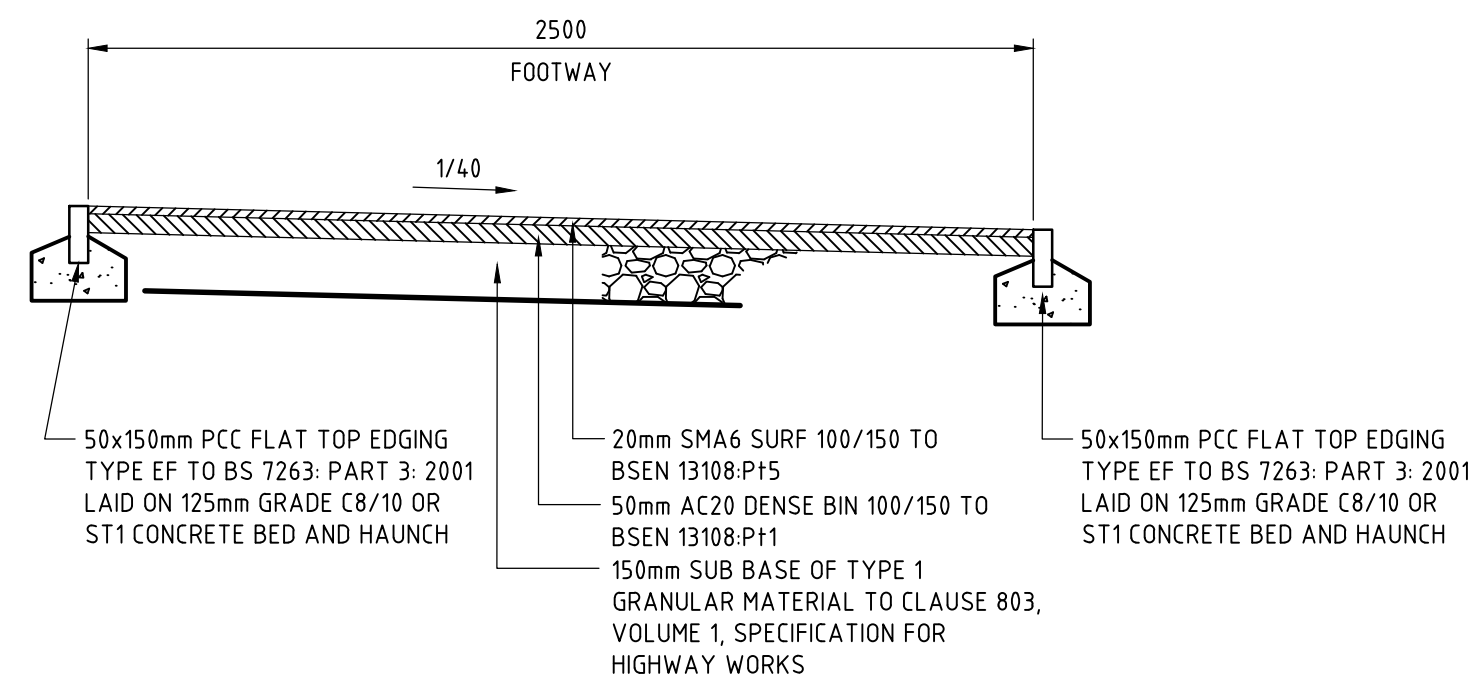
DISABLED PARKING BAY DETAIL



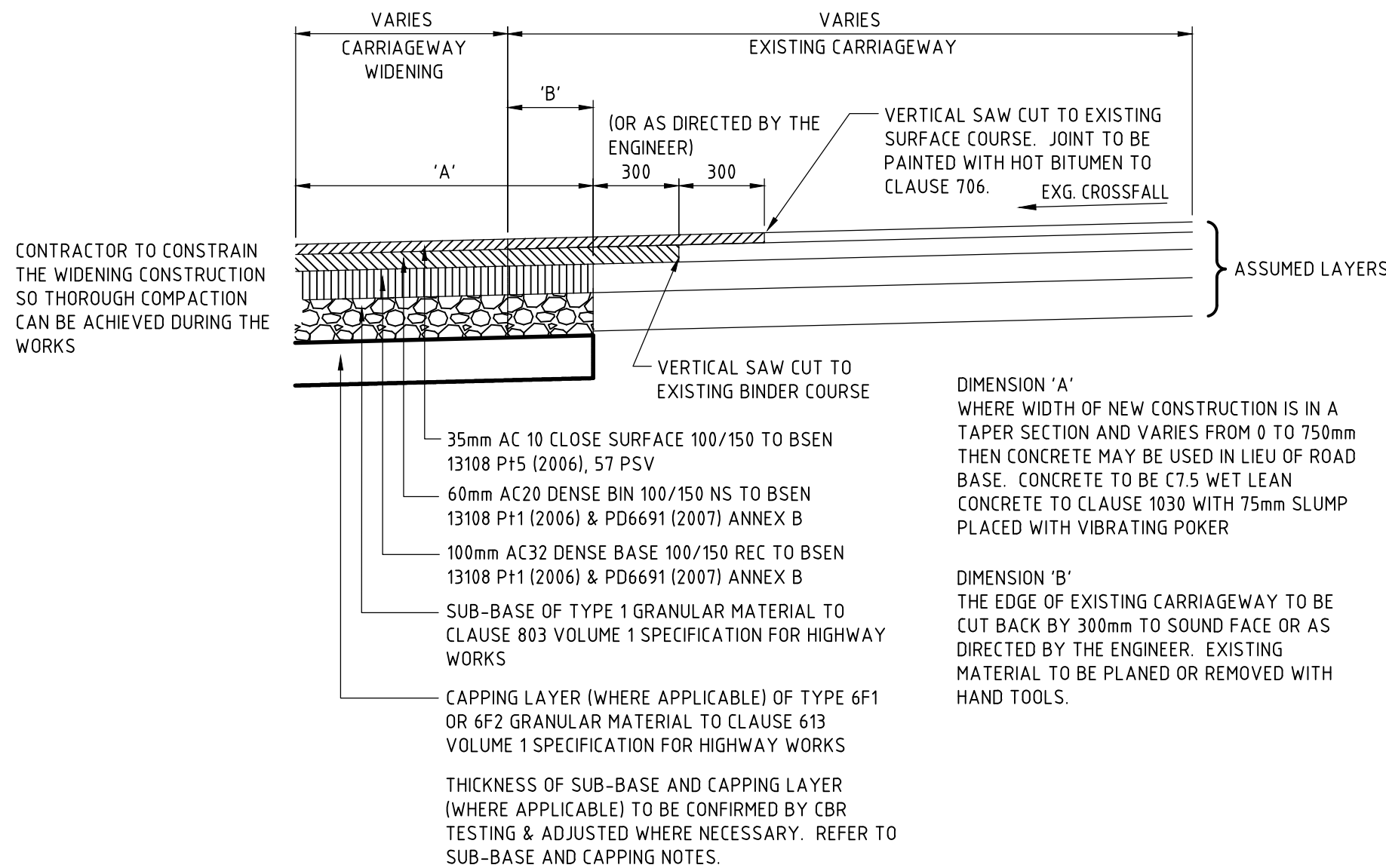
TYPICAL DETAIL OF BITMAC FOOTWAY (TIMBER EDGING)



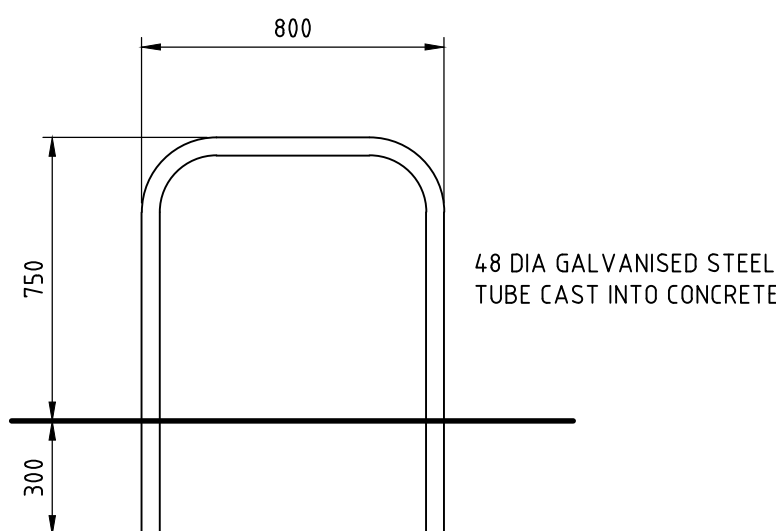
SECTION A-A ROUND TOP ROAD HUMP DETAIL



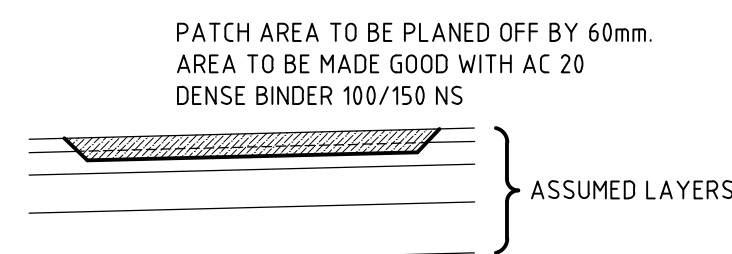
TYPICAL DETAIL OF BITMAC FOOTWAY (CONCRETE EDGING)



CARRIAGEWAY WIDENING DETAIL SHOWING TIE-IN TO EXISTING



SHEFFIELD CYCLE HOOP



RECONSTRUCTION PATCH DETAIL

Notes:

1. ALL DIMENSIONS IN MILLIMETRES UNLESS NOTED OTHERWISE.
2. CONTRACTORS MUST CHECK ALL DIMENSIONS ON SITE. ONLY FIGURED DIMENSIONS ARE TO BE WORKED FROM.
3. DISCREPANCIES MUST BE REPORTED TO THE ENGINEER BEFORE PROCEEDING.
4. THE SPECIFICATION FOR THE WORKS SHALL BE THE SPECIFICATION FOR HIGHWAY WORKS MCHW (MANUAL OF CONTRACT DOCUMENTS FOR HIGHWAY WORKS)

HEALTH AND SAFETY

- a. THE CONSTRUCTION (DESIGN AND MANAGEMENT) REGULATIONS 2015 APPLY TO THIS WORK.
- b. THE CLIENT, CONTRACTORS AND DESIGNERS HAVE LEGAL DUTIES UNDER COM 2015. REFER TO THE HEALTH AND SAFETY EXECUTIVE WEBSITE (<http://www.hse.gov.uk>) AND THE CONSTRUCTION INDUSTRY TRAINING BOARD WEBSITE (www.citb.co.uk) FOR FURTHER DETAILS.
- c. JOHN GRIMES PARTNERSHIP LTD IS THE PRINCIPAL DESIGNER.
- d. THE PRINCIPAL CONTRACTOR AND ALL SUBCONTRACTORS MUST SATISFY THEMSELVES THAT THEY FULLY UNDERSTAND THE DESIGN AND SITE CONSTRAINTS/ACTIVITIES IN TERMS OF COM 2015 AND THAT AN APPROPRIATE CONSTRUCTION PHASE PLAN IS IN PLACE PRIOR TO COMMENCING ANY WORKS ON SITE. THE CONSTRUCTION PHASE PLAN SHALL INCLUDE RISK ASSESSMENTS AND SAFE METHODS OF WORKING AS A MINIMUM.
- e. POTENTIAL CONSTRUCTION RISKS ASSOCIATED WITH THIS SITE INCLUDE:
 - i) WORKING IN HIGHWAY
 - ii) SWW RISING MAIN IN ROADWAY
 - iii) CONTRACTOR TO CHECK FOR SERVICES WITHIN WORKS AREA
- f. THE PRINCIPAL CONTRACTOR AND SUBCONTRACTORS SHALL PROVIDE RELEVANT RECORDS AND INFORMATION TO THE PRINCIPAL DESIGNER FOR INCLUSION IN THE HEALTH AND SAFETY FILE. THIS MAY INCLUDE, BUT IS NOT LIMITED TO THE FOLLOWING INFORMATION: CERTIFICATES IN RESPECT TO SUITABILITY AND SPECIFICATION COMPLIANCE OF RELEVANT MATERIALS AND/OR MANUFACTURE PROCESSES, OPERATION AND MAINTENANCE MANUALS, AS CONSTRUCTED DRAWINGS.

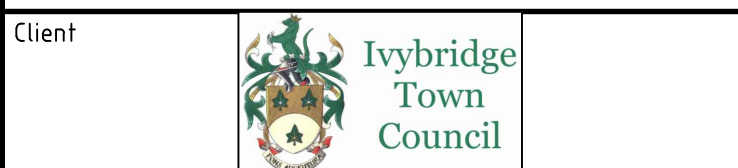
T1	TENDER ISSUE	06JUN23	RB	CS
Issue	Description	Date	Drwn	Chkd

TENDER NOT TO BE USED FOR CONSTRUCTION

Copyright reserved	First Issue Signatures
AS SHOWN	Author RB
A1	Checker CS

JGP JOHN GRIMES PARTNERSHIP

Leonards Road, Ivybridge, Devon, PL21 0RU
Tel: +44 (0)1752 690533
post@johngrimes.co.uk www.johngrimes.co.uk



IMPROVEMENTS TO FILHAM PARK ACCESS ROAD & CAR PARK

ROAD CONSTRUCTION DETAILS & FOOTPATH LONGITUDINAL SECTION

Project No.	Drawing No.	Rev.
15818	210	T1