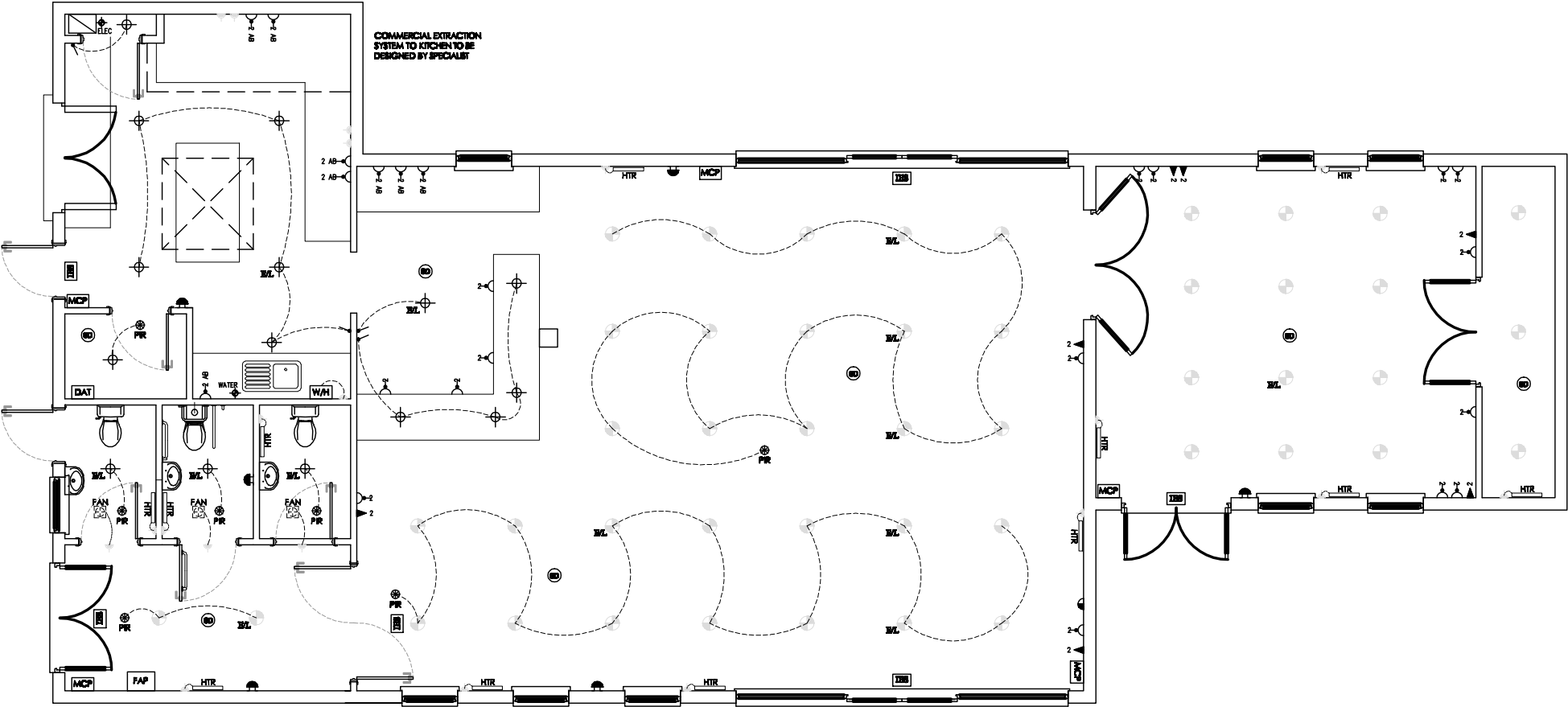


ELECTRICAL SYMBOL LEGEND

- LOCAL DISTRIBUTION PANEL
- SWITCHED SOCKET
- DOUBLE SWITCHED SOCKET
- DBB ABOVE WORK TOP
- TV POINT
- FUSED RUPR
- TVH OUT & OUTLET POINT
- PER LED NEW LIGHT FITTINGS TO CEILING WHITE BESSLS
- CEILING ROSE LIGHT POINT FITTED WITH LAMP HAVING A LUMINOUS EFFICACY GREATER THAN 40 LUMENS PER CIRCUIT WATT
- SMOKE DETECTOR TO BS5446 PART 1
- PANIC SUPPLY RED LIGHTING CONTROLLER (CEILING MOUNTED)
- CEILING MOUNTED MECHANICAL EXTRACT FAN DUCTED TO ROOF, MIN 80mm CAPACITY
- FIRE ALARM PANEL CATEGORY LSW TO BS 5824-1, LINKED TO DETECTORS AND MANUAL CALL POINTS
- MANUAL CALL POINT (BREAK GLASS) TO FIRE ALARM SYSTEM AT EXIT POINTS
- ALARM SOUNDER WITH FLASHING BEACON TO MEET AUDIBLE AND VISUAL REQUIREMENTS OF BS5824
- MANUAL LIGHT SWITCHING
- DATA CABINET AND DISTRIBUTION PANEL
- WALL MOUNTED EMERGENCY PROGRAMMABLE HEATER WITH THERMOSTATIC CONTROL
- MULTIPOINT ELECTRIC WATER HEATER SERVING KITCHEN FOR WASH BINK AND SH. WASH (SERVING TO KITCHEN)
- ILLUMINATED EMERGENCY EXIT SIGN TO BS 5266 AND BS EN 18225-1 - MANTAINED WITH LED PACK IN 45min ISO2.



SERVICES PLAN - ELECTRICS / HEATING / FIRE SAFETY

DISCLAIMER: This drawing is copyright and the property of Trinity Rose Architecture Ltd and information is not to be disclosed or reproduced. All dimensions are millimetres, you should not scale from the drawing unless for planning purposes and use figured dimensions where shown. If you are in doubt or the contents of the drawing are not suitable please ask. Please use this drawing in conjunction with all consultants information and site specifications.

Rev	Date	Details

TRINITYROSE
ARCHITECTURE

www.trinity-rose.co.uk architecture@trinity-rose.co.uk T: 01942 850424

Issue

Tender Issue

Client

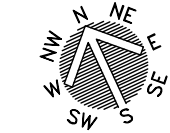
Fair Oak & Horton Heath P.C.

Project

Proposed Community Cafe
Shorts Road
Fair Oak, Eastleigh, Hampshire

Drawing Title

Proposed Electrical Layout



Scale 1:100

