

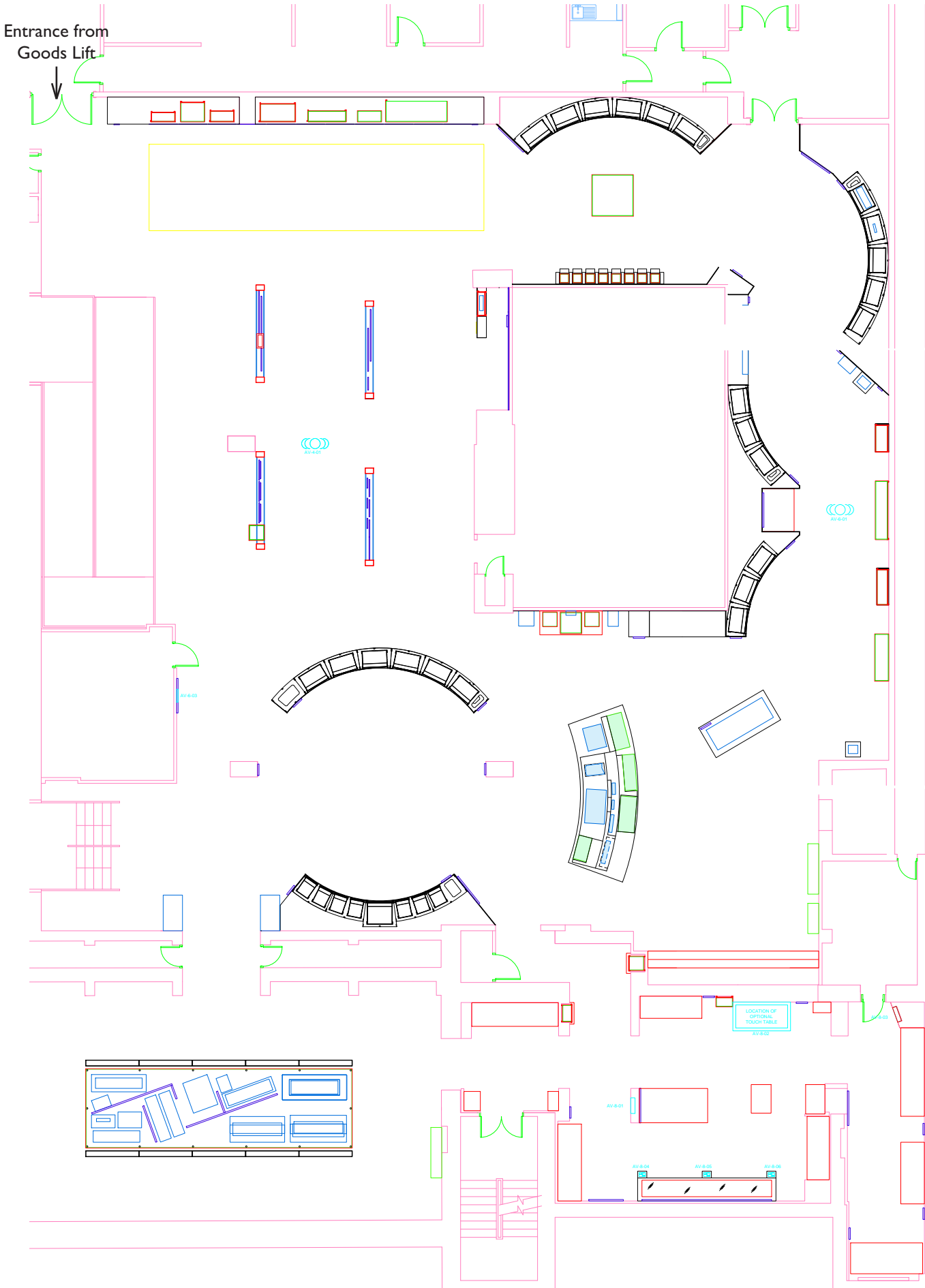
EGYPT GALLERY:

Heavy Object Brief

Index:

- 1 Plan of Gallery
- 2 Object Storage
- 3-19 Heavy object information

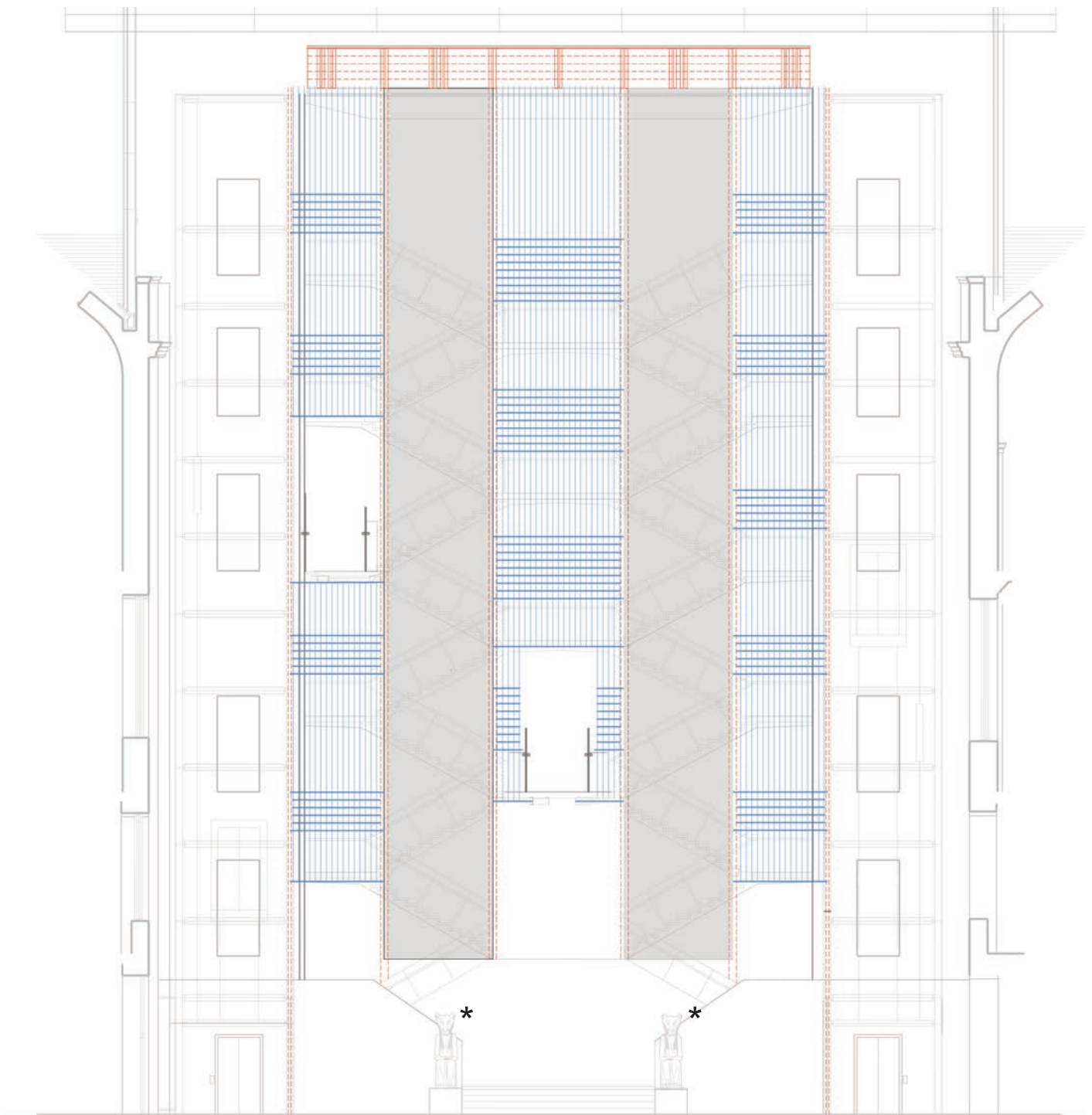
Gallery Plan



Object Storage

All objects will be on site and gallery access will be via the goods lift.

* The Sekhmet Statues will need to be deinstalled from the Atrium, taken out of the front of the Museum around to the loading bay by lorry and up in the goods lift to gallery on the 3rd floor



Atrium Section Drawing

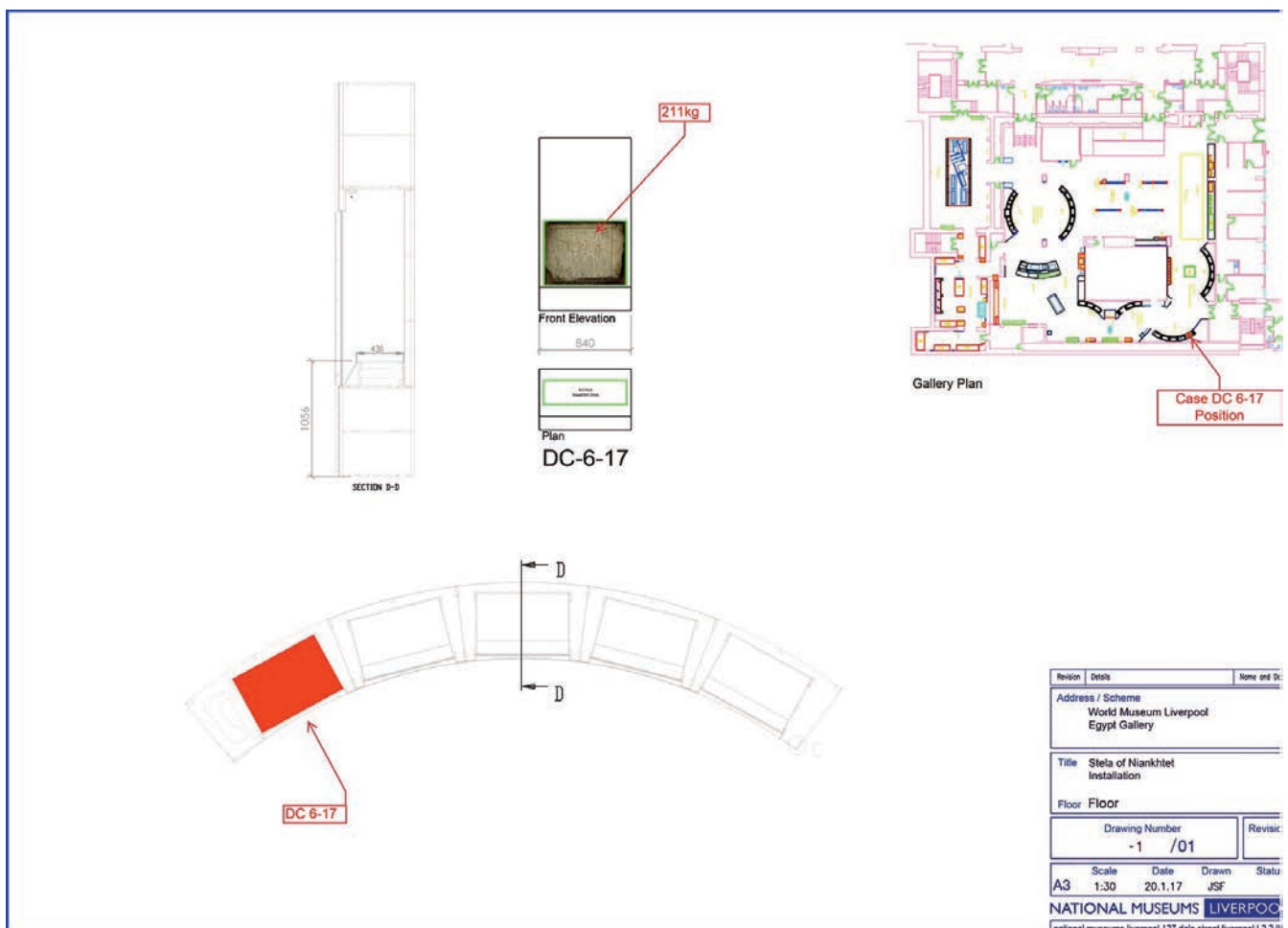
Heavy/Mounting Object Information

Item, M13850 Stela in Case DC-6-17



Mount information:

- * Bracket required to sit on base of case
- * 211 Kg
- * 760mm W x 590mm H x 220mm D



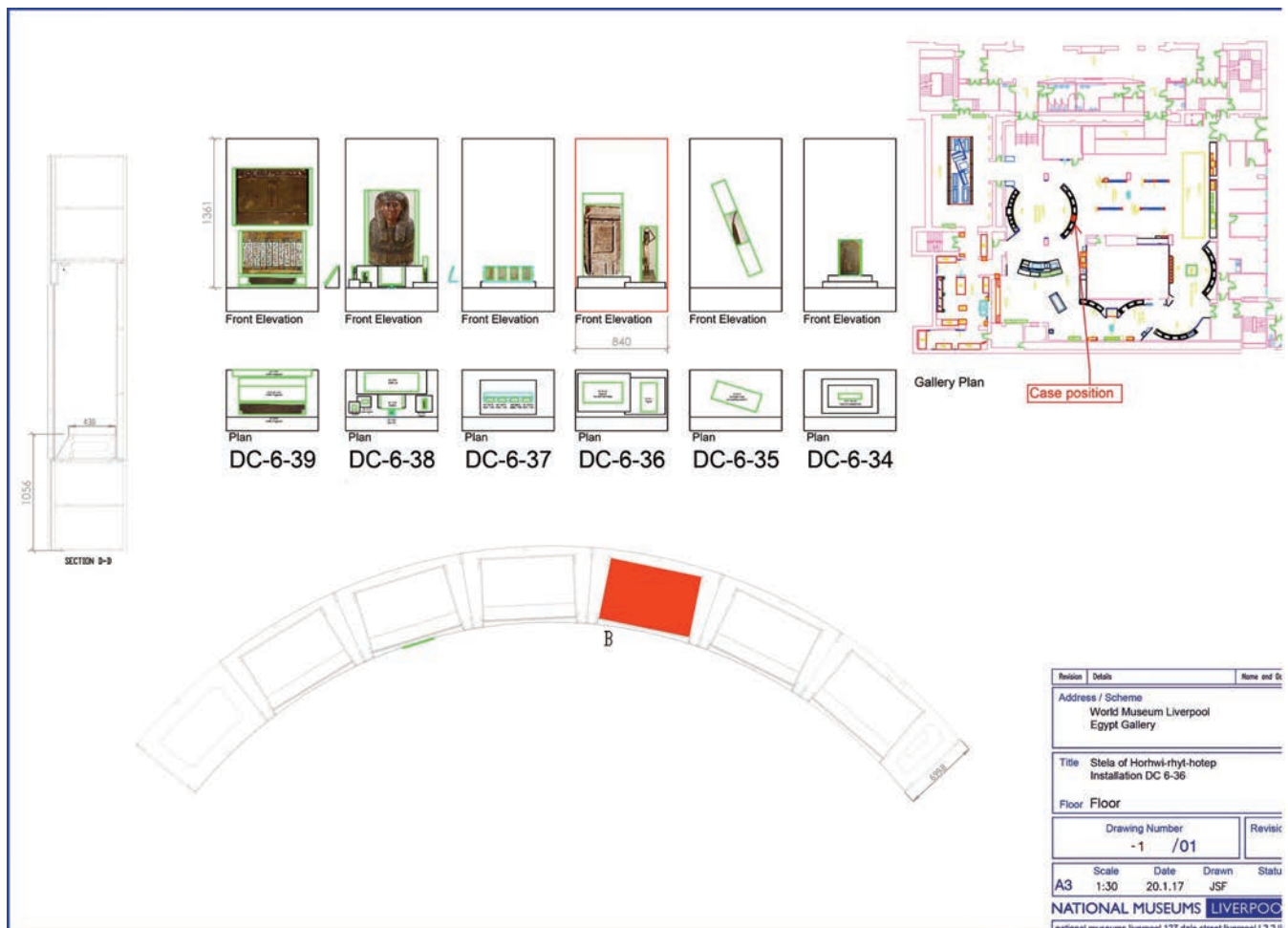
Heavy/Mounting Object Information

Item, 55.82.22 Stela in case DC 6-36



Mount information:

- * Bracket required to sit on raised plinth (480 x 350) in case
- * 74kg
- * 359mm W x 760mm H x 185mm D



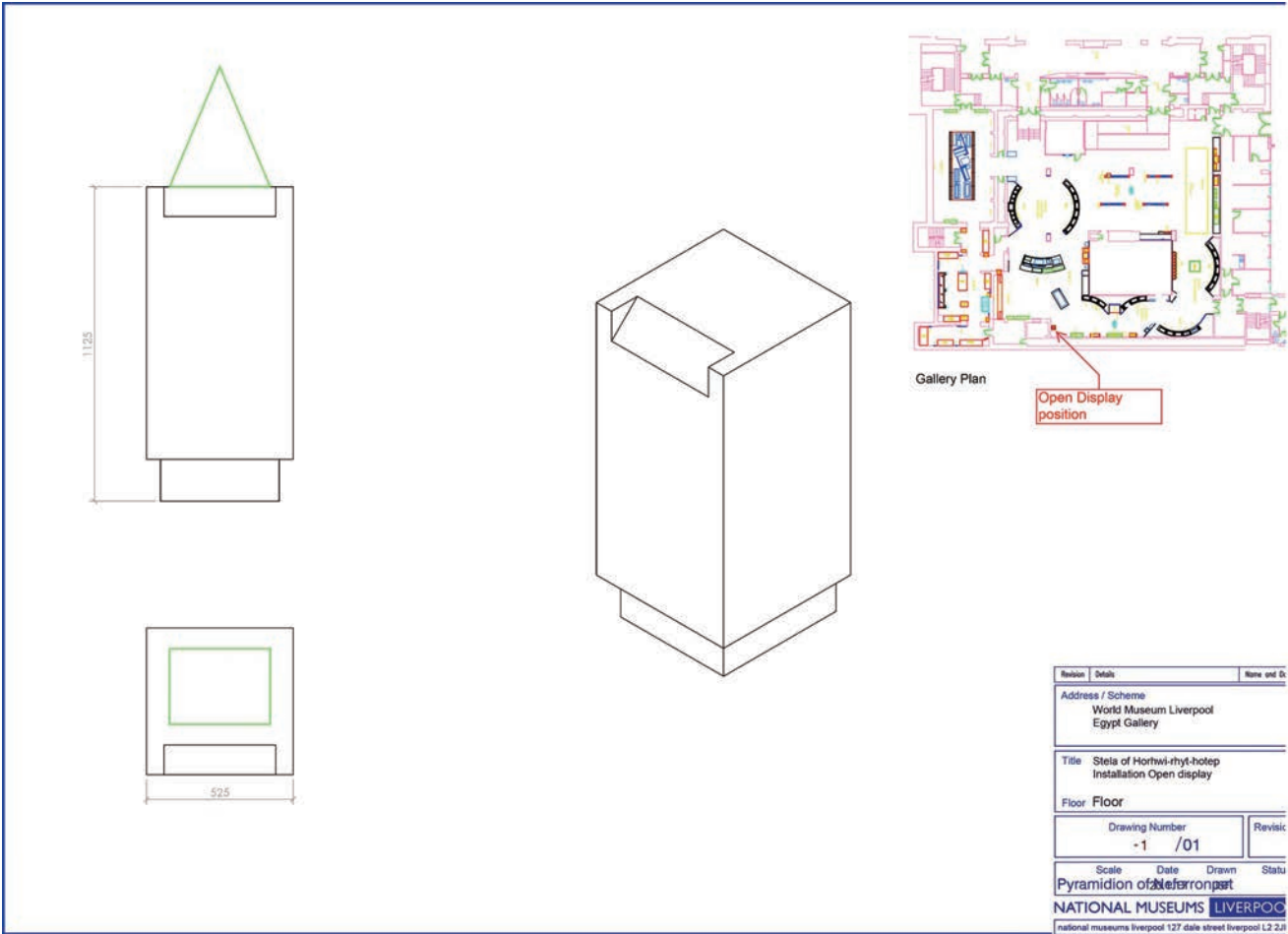
Heavy/Mounting Object Information

Item, M11015 Open Display



Mount information:

- * Sit on top of new base plinth (may require silicon to fix?)
- * 56 kg
- * 330mm W x 460mm H x 290 D



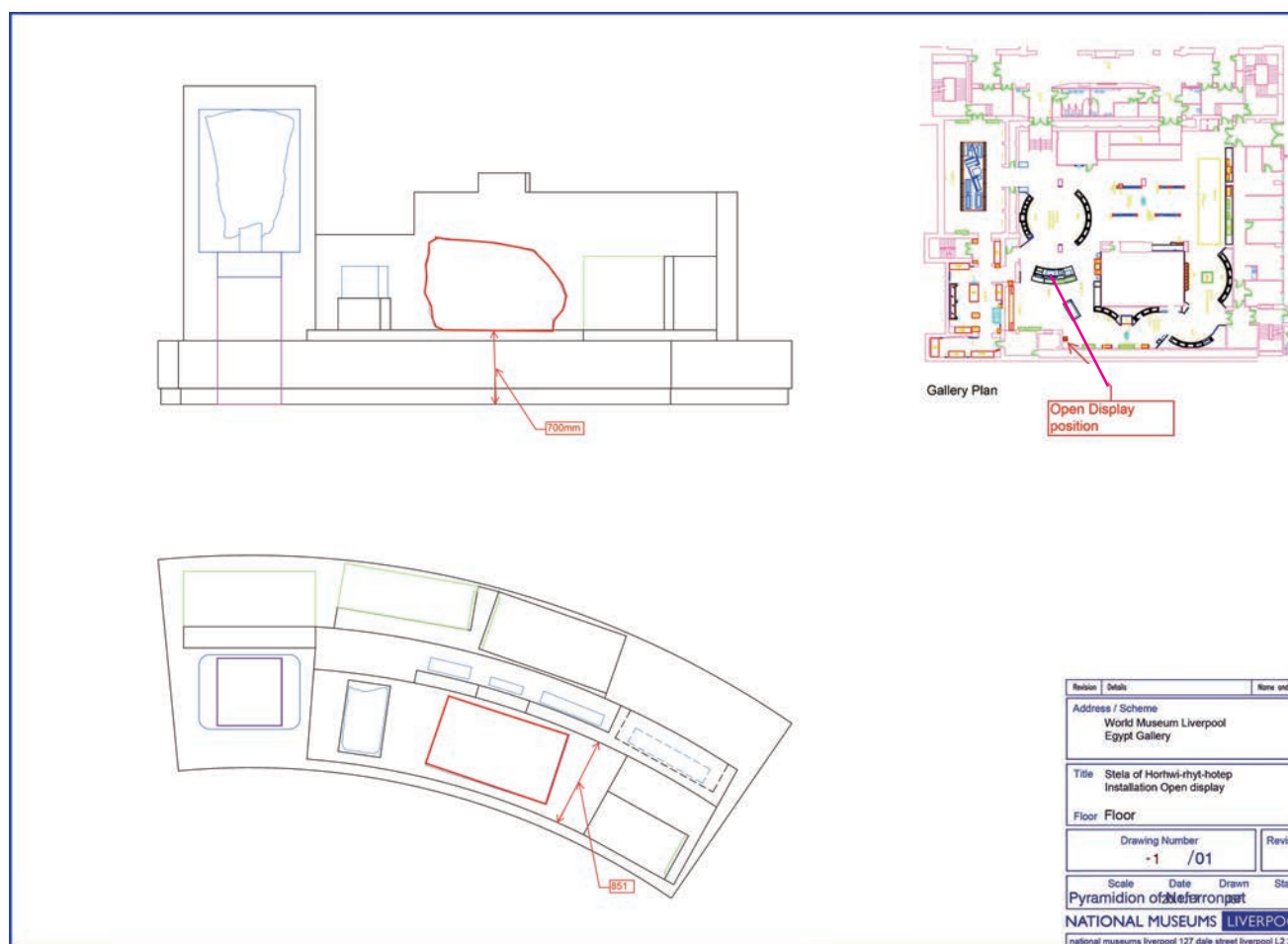
Heavy/Mounting Object Information

Item, 21.3.891 Sculpture of Ramesses II



Mount information:

- * Sit on base (Open Display)
- * 830 kg
- * 1180mm W x 800mm H x 690mm D



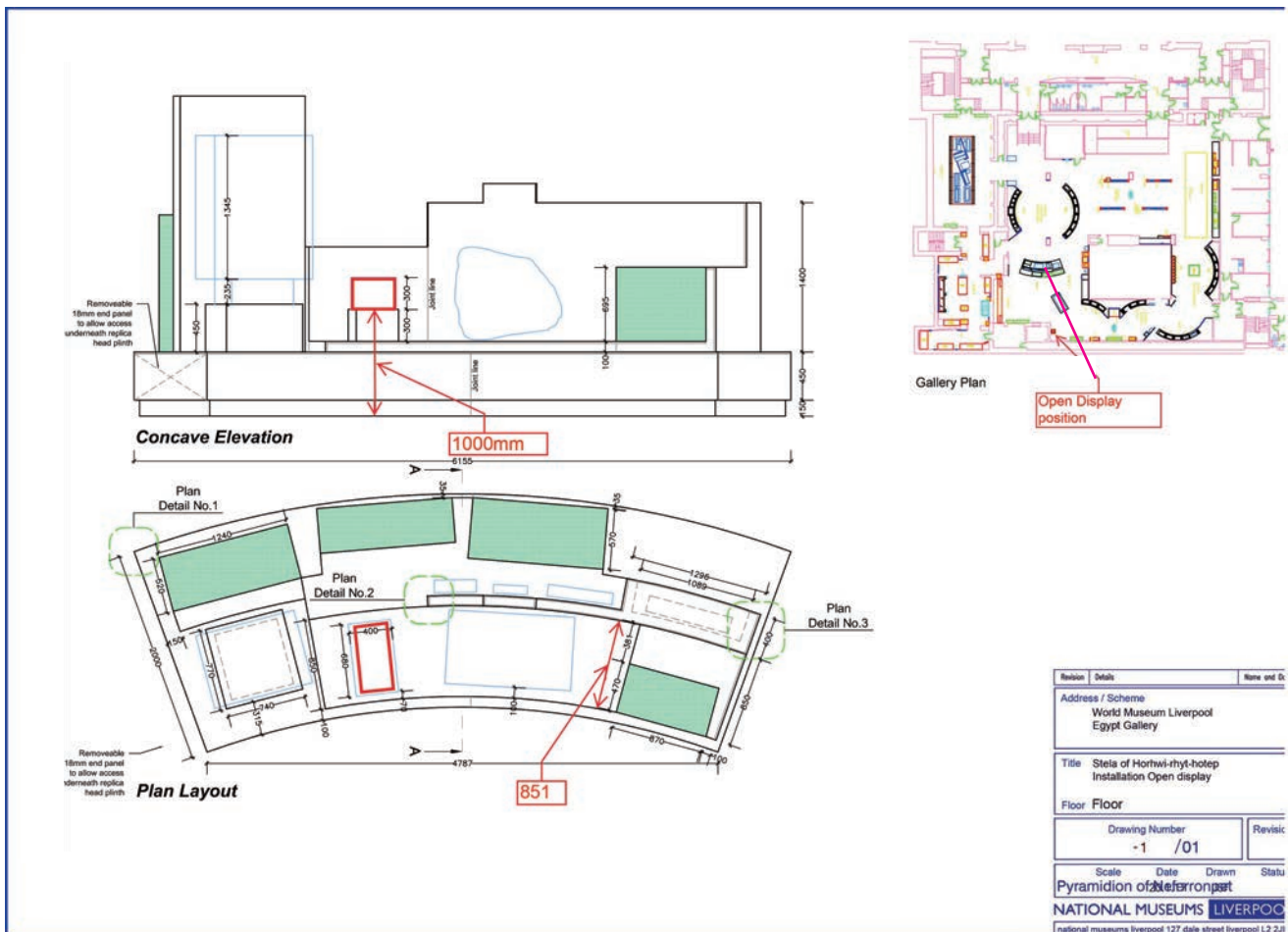
Heavy/Mounting Object Information

Item, 1966.159 Statue base of Ramesses II



Mount information:

- * Sit on raised plinth (Open Display)
- * 190 kg
- * 357mm W x 302mm H x 635mm D



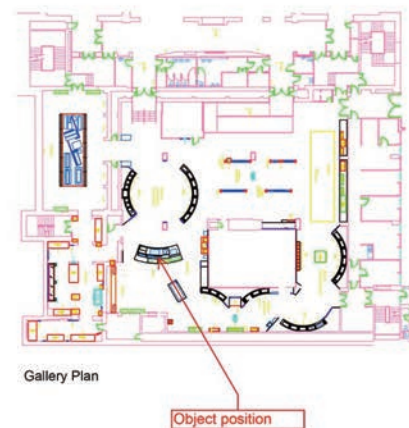
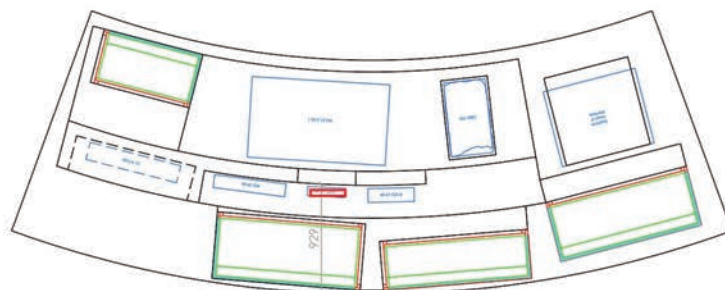
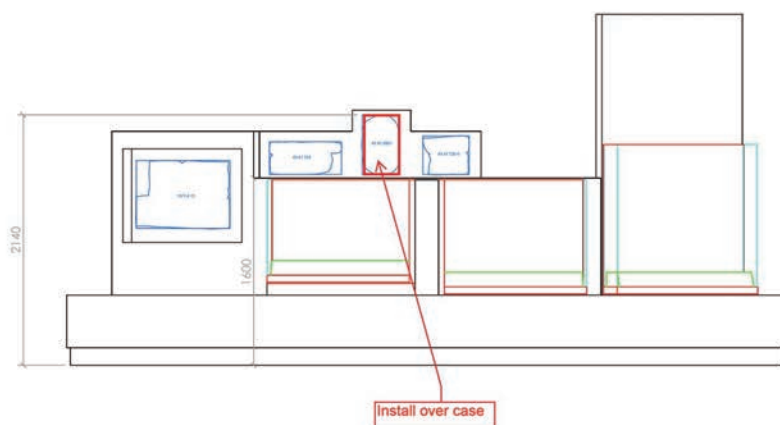
Heavy/Mounting Object Information

Item, 49.47.2005 Stela of King Teiteqese



Mount information:

- * Metal bracket fixed to MDF wall with metal plate behind to tap into
- * 30 kg
- * 320mm W x 510mm H x 80mm D



| Revision | Details | Name and D |
|---|---------|-------------|
| Address / Scheme World Museum Liverpool Egypt Gallery | | |
| Title Stela of King Teiteqese Installation Open display | | |
| Floor Floor | | |
| Drawing Number -1 /01 | | Revisio |
| Scale | Date | Drawn Statu |
| Pyramidion of Nefertiti | | |
| NATIONAL MUSEUMS LIVERPOOL | | |
| national museums liverpool 127 dale street liverpool L2 2JH | | |

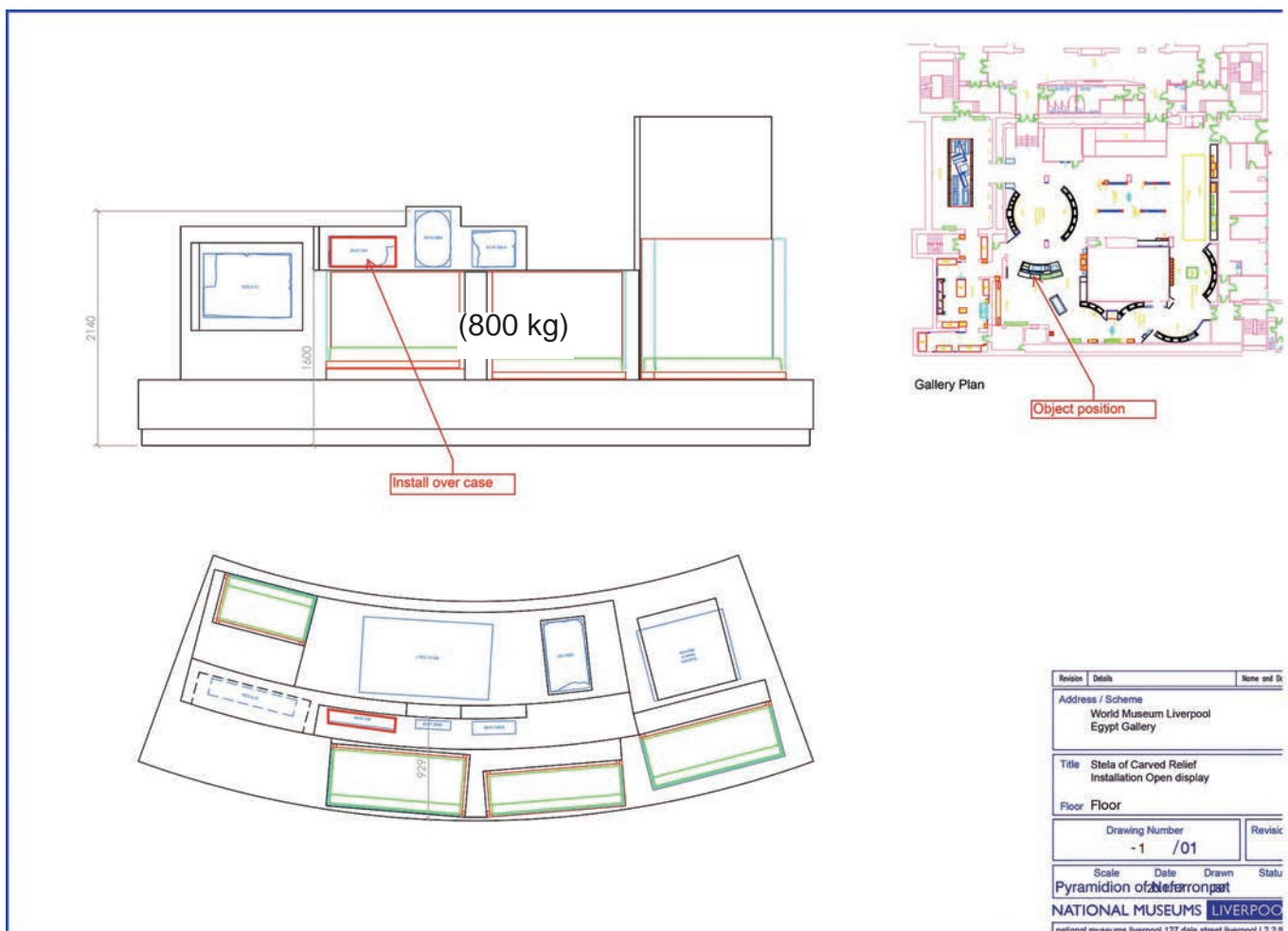
Heavy/Mounting Object Information

Item, 49.47.724 Carved Relief



Mount information:

- * Metal bracket fixed to MDF wall with metal plate behind to tap into together with base support
- * 45 kg
- * 615mm W x 280mm H x 110mm D



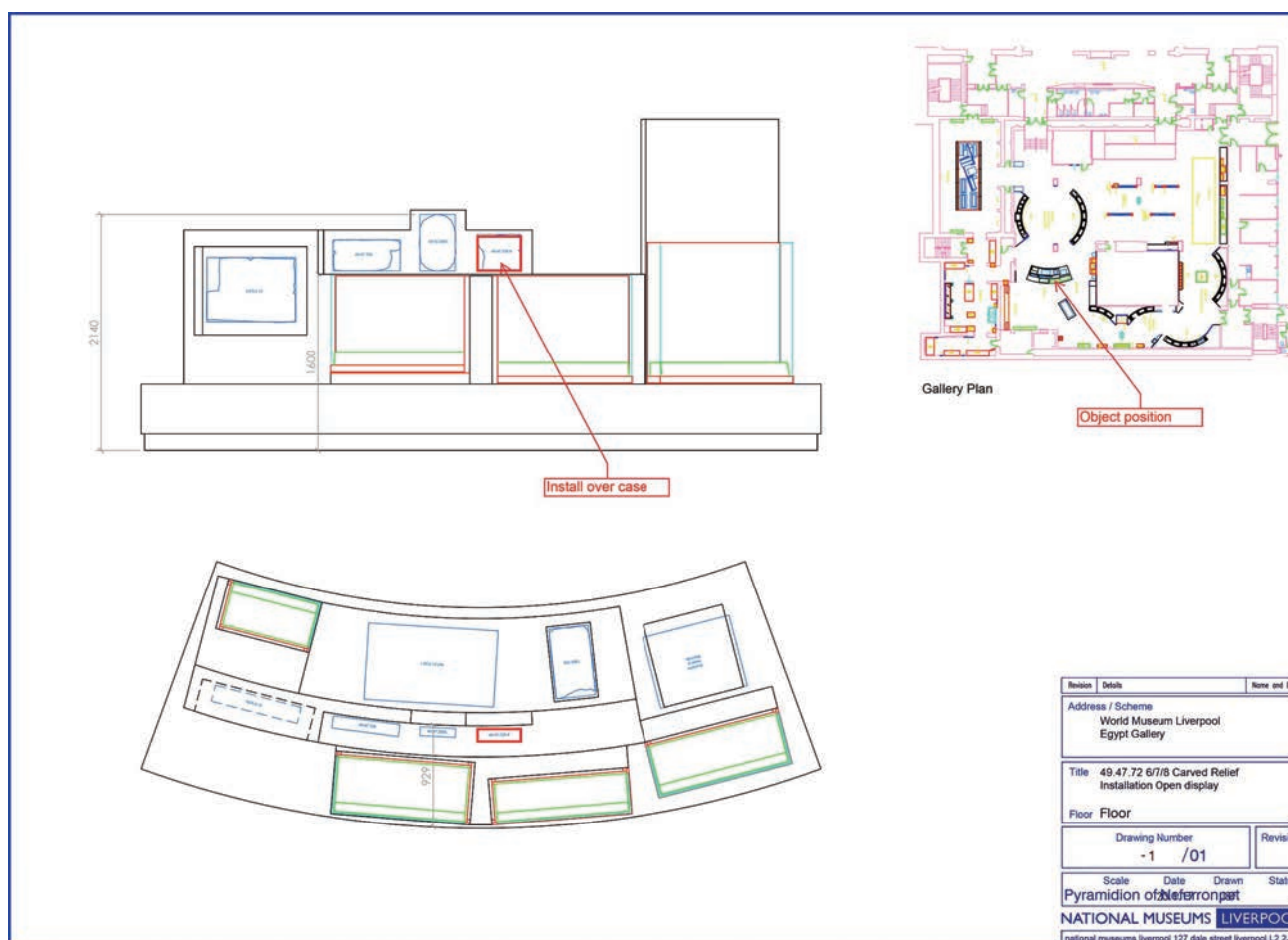
Heavy/Mounting Object Information

Item, 49.47.726/7/8 Carved Relief



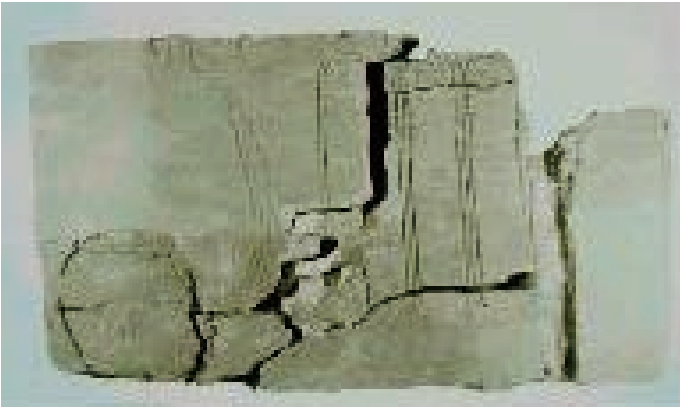
Mount information:

- * Metal bracket fixed to MDF wall with metal plate behind to tap into together with base support
- * 38 kg
- * 395mm W x 330mm H x 118mm D



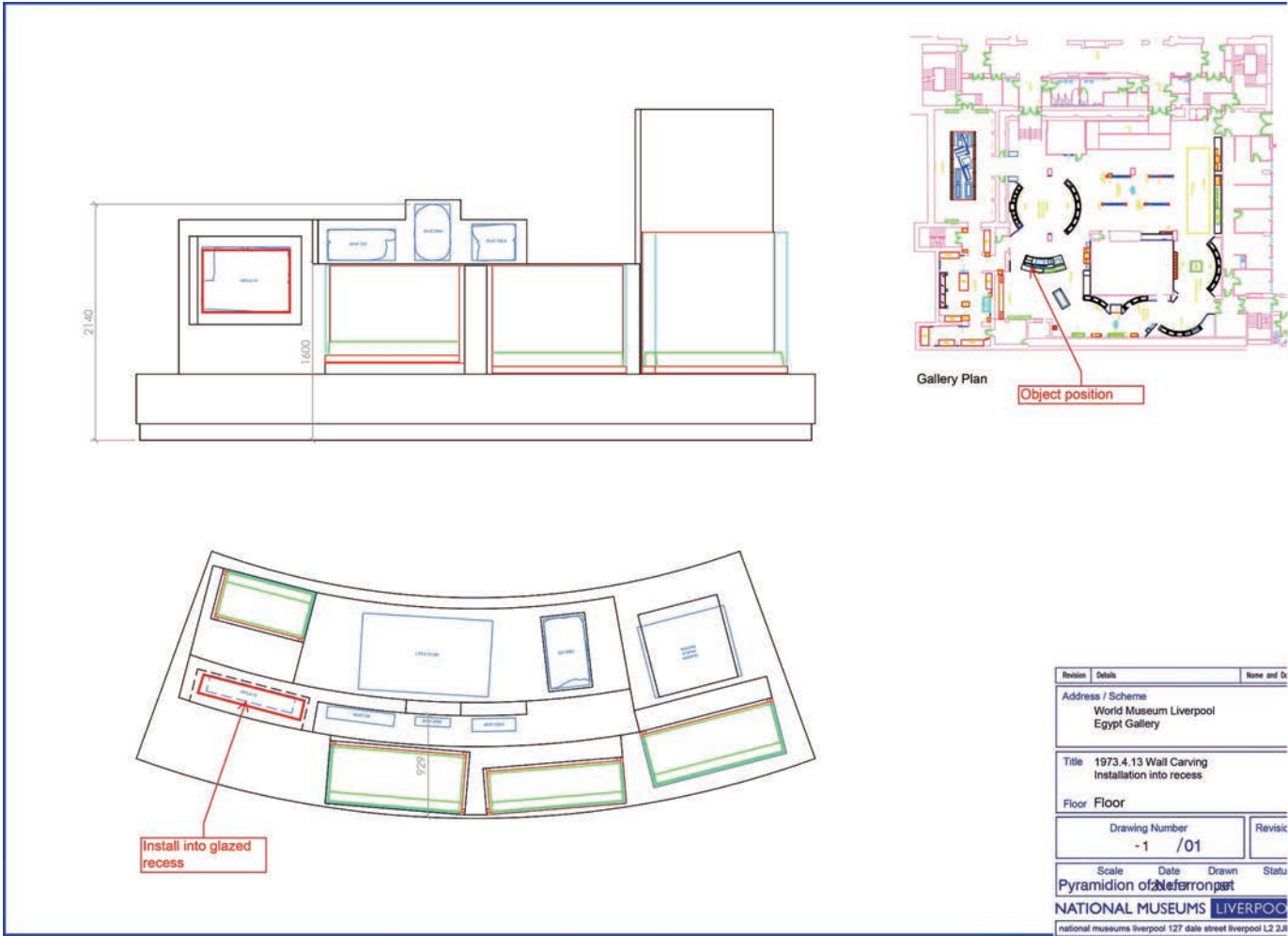
Heavy/Mounting Object Information

Item, 1973.4 13 Wall Carving



Mount information:

- * Sits within enclosure Metal bracket fixed to MDF back with metal plate to tap into together with base support
- * 125kg
- * 800mmW x 580mm H x 150mm D



Heavy/Mounting Object Information

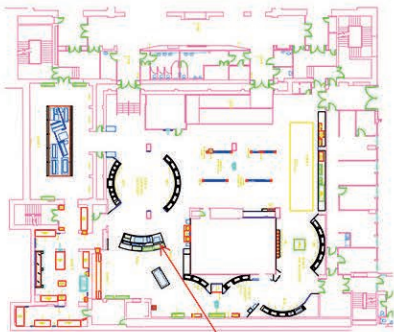
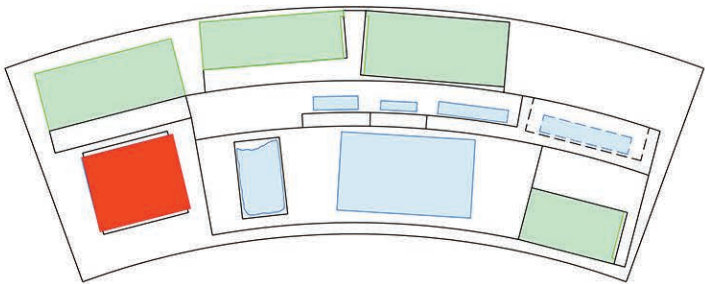
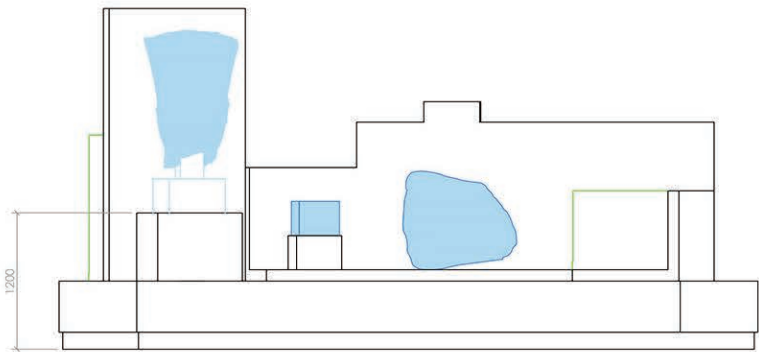
Item, EA& Cast, loan in from British Museum



Mount information:

Cast with base

- * Object with base to sit on raised plinth , surround to fit around base (Open Display)
- * 500 kg
- * 810mm W x 1580mm with base H x 660mm D



Gallery Plan

Object Position

| Revision | | Details | None and Di |
|---|------|---------|-------------|
| Address / Scheme | | | |
| World Museum Liverpool | | | |
| Egypt Gallery | | | |
| Title | | | |
| EA7 Cast from British Museum | | | |
| Installation Open display | | | |
| Floor | | | |
| Floor | | | |
| Drawing Number | | Revisi | |
| - 1 | | / 01 | |
| Scale | Date | Drawn | Statu |
| Pyramidion of Nefertiti | | | |
| NATIONAL MUSEUMS LIVERPOOL | | | |
| national museums liverpool 127 dale street liverpool L2 2JF | | | |

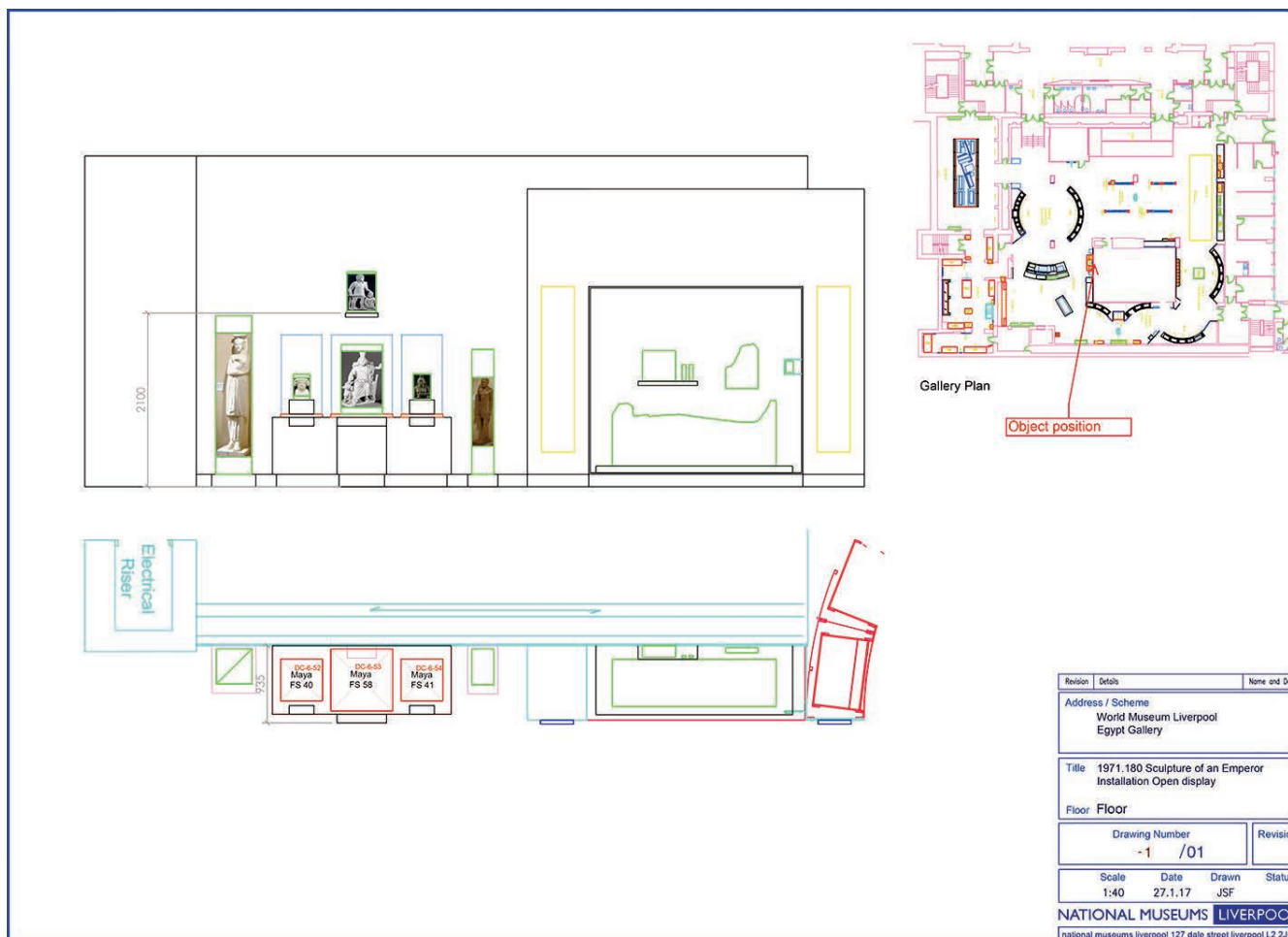
Heavy/Mounting Object Information

Item, 1971.180 Sculpture



Mount information:

- * Sits on Shelf (400 x 50 x200)+ levelling mount to sit securely
- * 25kg
- * 350mm W x 500mm H x 150mm D



Heavy/Mounting Object Information

Item, 59.148.54 & 59.148.58 Statue's



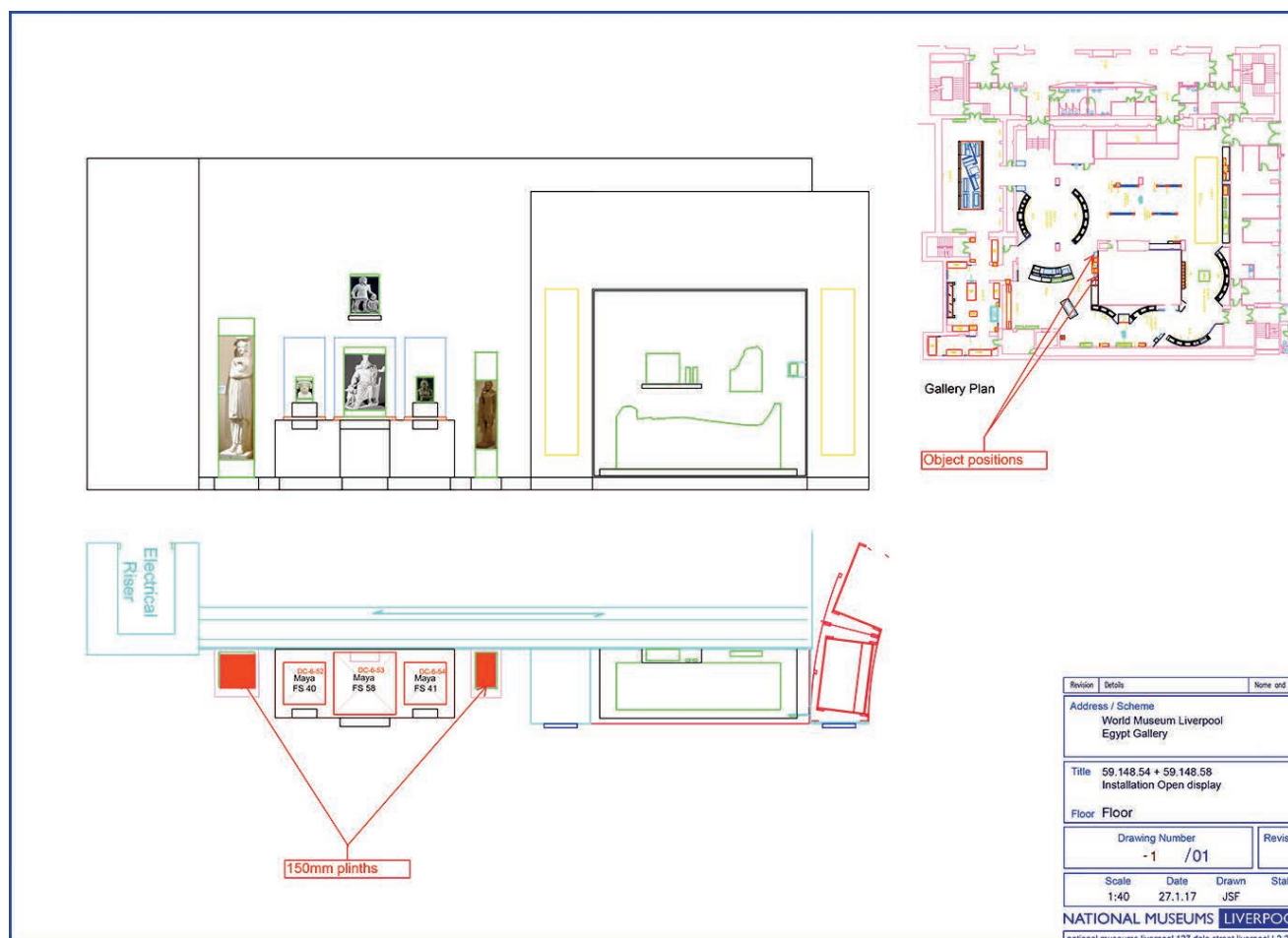
59.148.54



59.148.58

Mount information:

- * Sit on plinth, open display (535 x 150 x 575, + 365 x 150 x 575)
- * (a) 59.148.54= 610kg, (b) 59.148.58=275kg
- * (a) 435mm W x 1920mm H x 425mm D
(b) 265mm W x 1510mm H x 435mm D



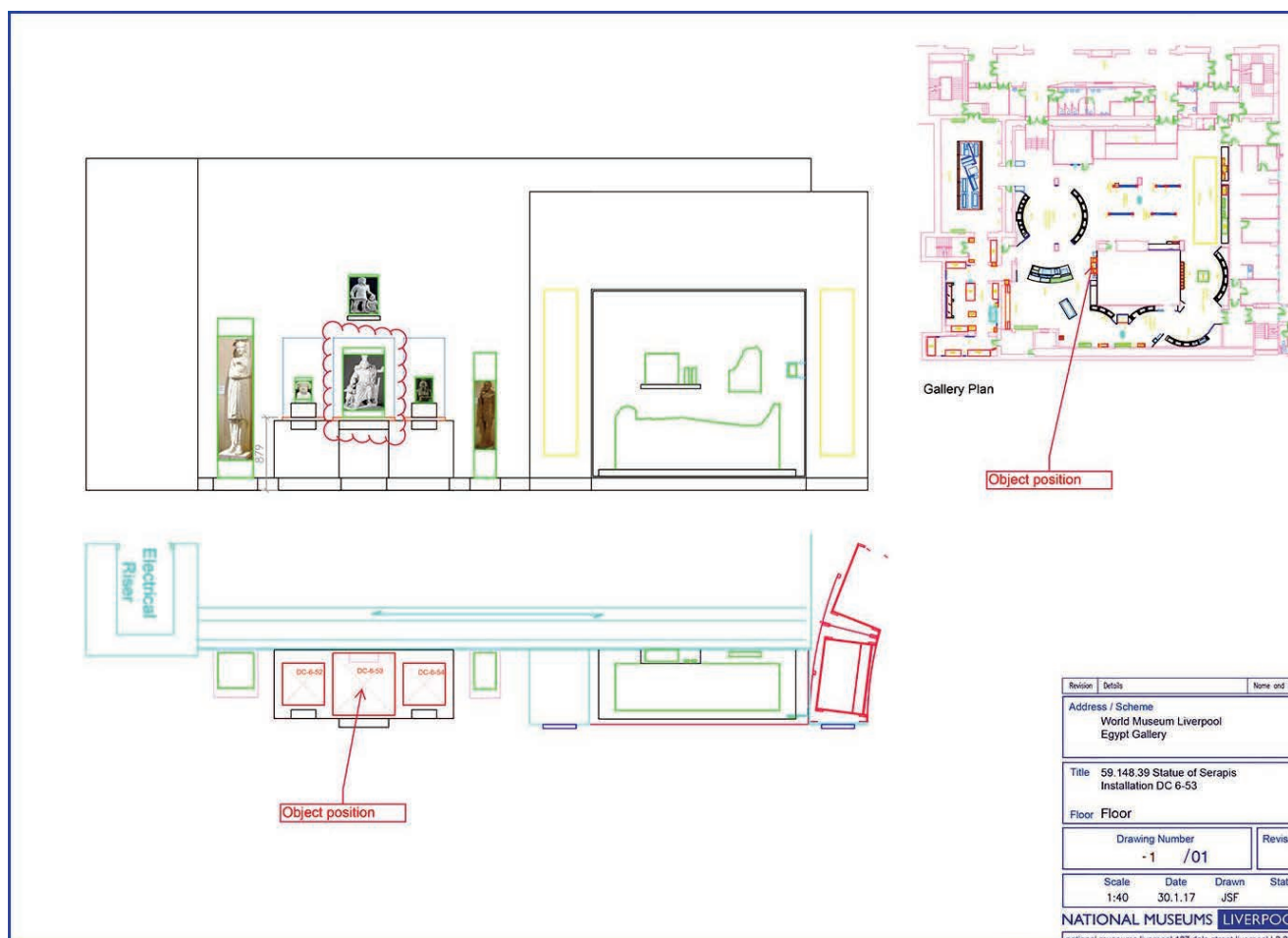
Heavy/Mounting Object Information

Item, 59.148.39 Statue of Serapis



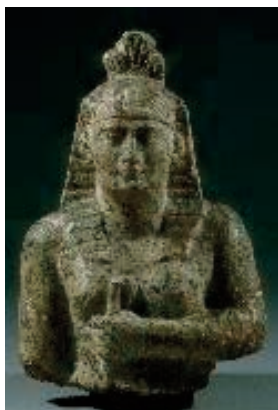
Mount information:

- * Sit on base of Frank Case DC 6-53 + levelling mount to sit securely
- * 101kg
- * 530mm W x 850mm H x 410mm D



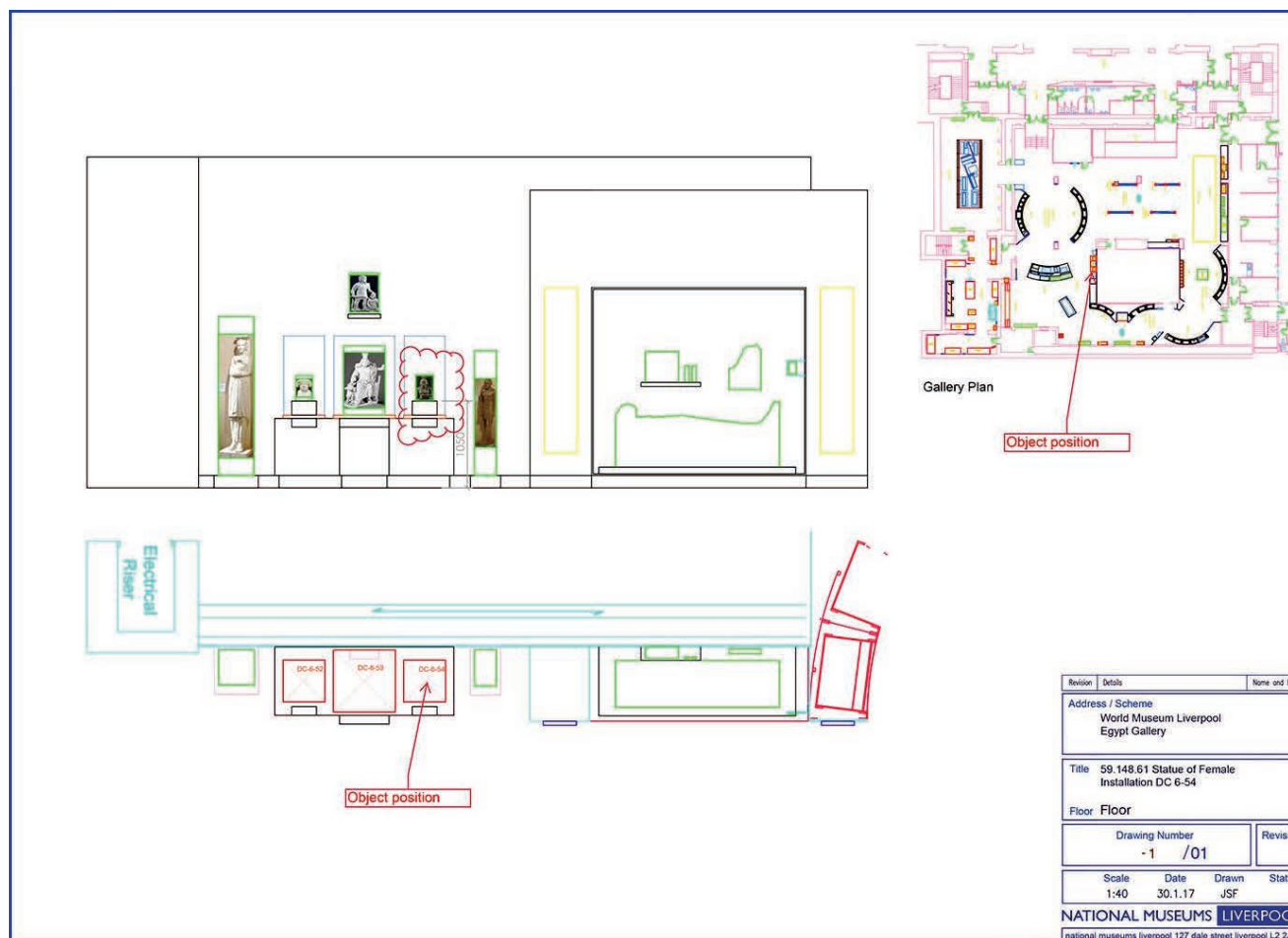
Heavy/Mounting Object Information

Item, 59.148.61 Statue of a Female



Mount information:

- * Sit on 300 x 300 plinth within Frank case DC 6-54 may require a mount
- * 20kg
- * 210mm W x 315mm H x 175mm D



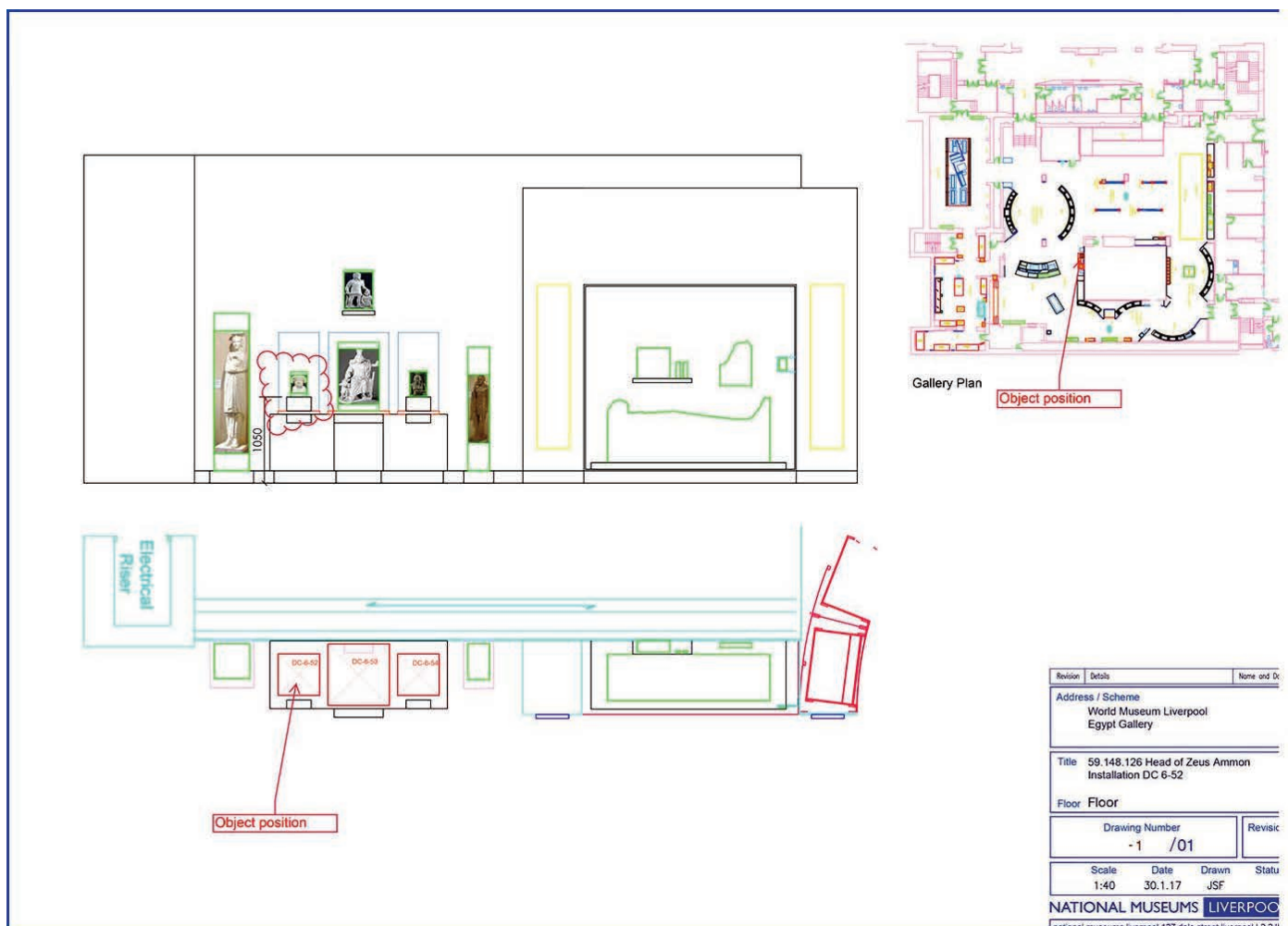
Heavy/Mounting Object Information

Item, 59.148.126



Mount information:

- * Sit on 300 x 300 plinth within Frank case DC 6-52
- * Approx. 40kg
- * 2000mm W x 310mm H x 180mm D



Heavy/Mounting Object Information

Item, M11809 + M11810 Sekhmet Statue's

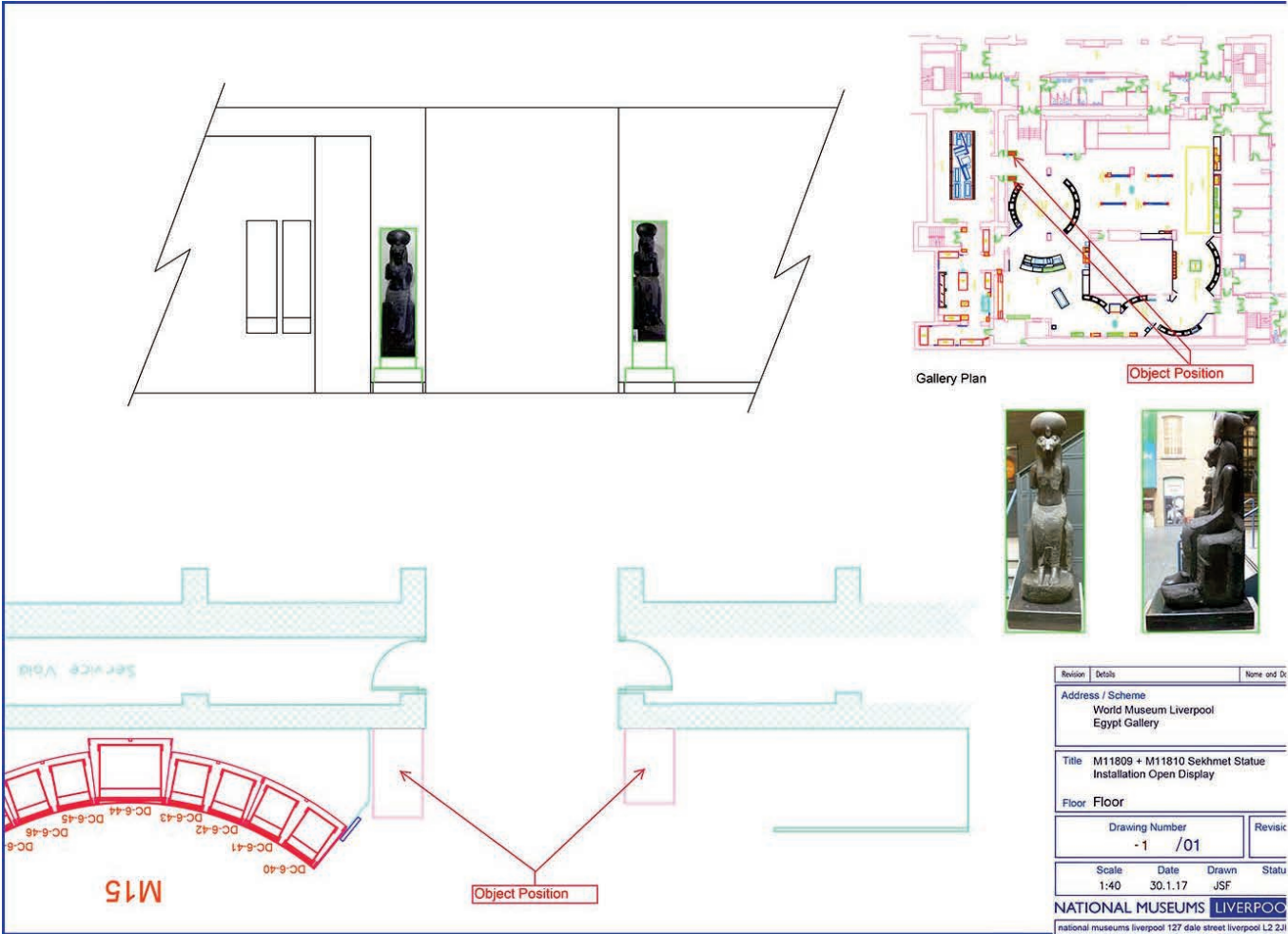


Mount information:



Current position either side of staircase

- * Sit on base plinth. (These items would need to be deinstalled from the Atrium at ground level taken out of the front of the building around to the loading bay at the rear and up to the gallery in the goods lift)
- * M11809 = 1286kg (a)
M11810 = 1463kg (b)
- * (a) 500mm W x 1960mm H x 840mm D
(b) 480mm W x 2060mm H x 1050mm D



Heavy/Mounting Object Information

Item, M13860 + M13934 Stela, + Sculpture



M13860 (a)



M13934 (b)

Mount information:

- * Both Sit on tiered base, open display
- * M13860 = 414kg requires fixing bracket to secure
M13934 = 113kg requires levelling mount to sit securely
- * 570mm W x 220mm H x 270mm D (a)
500mm W x 1040mm H x 270mm D (b)

