

Proposed Control Room General Construction Works.

Remove three No. existing windows, sills and boards. Infill openings with concrete blocks to external leaf, 50mm insulation and lightweight block to inner leaf. Prepare and render externally to match and fair face plaster to interior.

Suspended ceiling in control room areas to be suspended at 2.75m AFFL and made up of lay in open grid tiles allowing ventilation passage through, smoke detection and sprinklers to remain unchanged.

Strip existing kitchen complete with floor finishes. Install isolating valves to hot and cold water and clean drains.

Break out two No. WC pans and urinals to make way for new DP WC. Cap off soil spigots Break out bush boarding and fitments ready for new wall construction..

Supply and install three No. 1000 drawer line base units from Howden range as specified, complete with single drainer stainless steel sink unit and 2 No. wall units.

Construct dividing wall as shown to form WC complete to BS. Break through into escape passage and form 950 opening door and frame to 30minutes fire rating. Supply and install suspended ceiling at 2.7m affl complete with Armstrong Dune tiles on 15mm exposed T grid.

Strip and replace floor covering for Altro non-slip welded vinyl coved all round. Redecorate Gents WC complete. Colour to be agreed.

Strip and redecorate stair lobby from ground through to fist floor slab level.

Loading bay to be prepared all round and fully decorated with exterior white masonry paint as specified. Floor to be cleaned off and have two coats of epoxy water based Johnsons Princess Grey with non-slip additive.

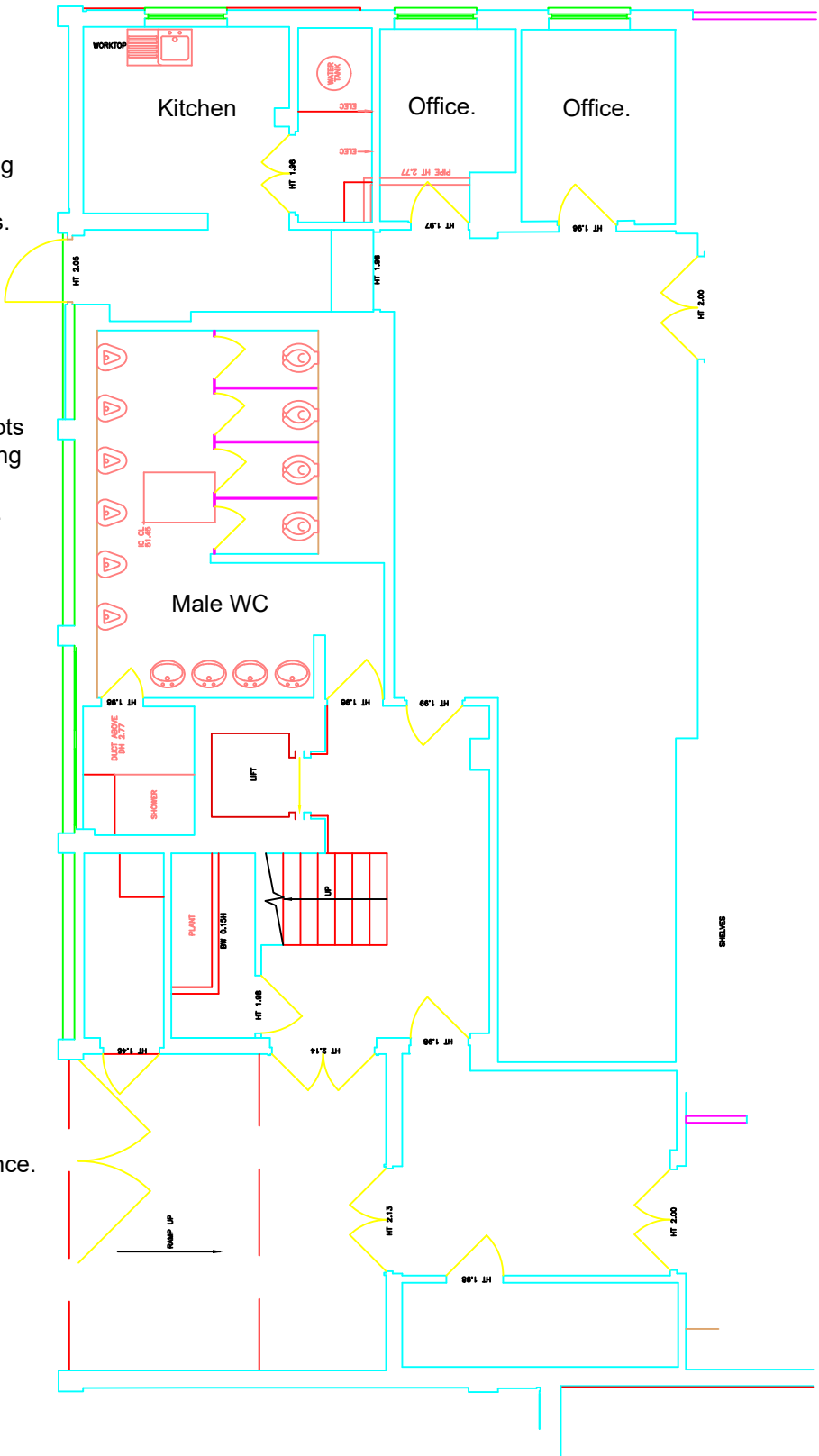
Strip existing kitchen complete with floor finishes. Install isolating valves to hot and cold water and clean drains.

Main body of the control room to be segregated from the passage by way of 100mm stud wall complete with acoustic lining fill. Each side to be lined with 15mm feather edge plaster board and taped and jointed to finish. Partition to be sealed all round for 30 minute fire rating. Door set to be matching 30 minute fire door set with upper and lower vision panels.

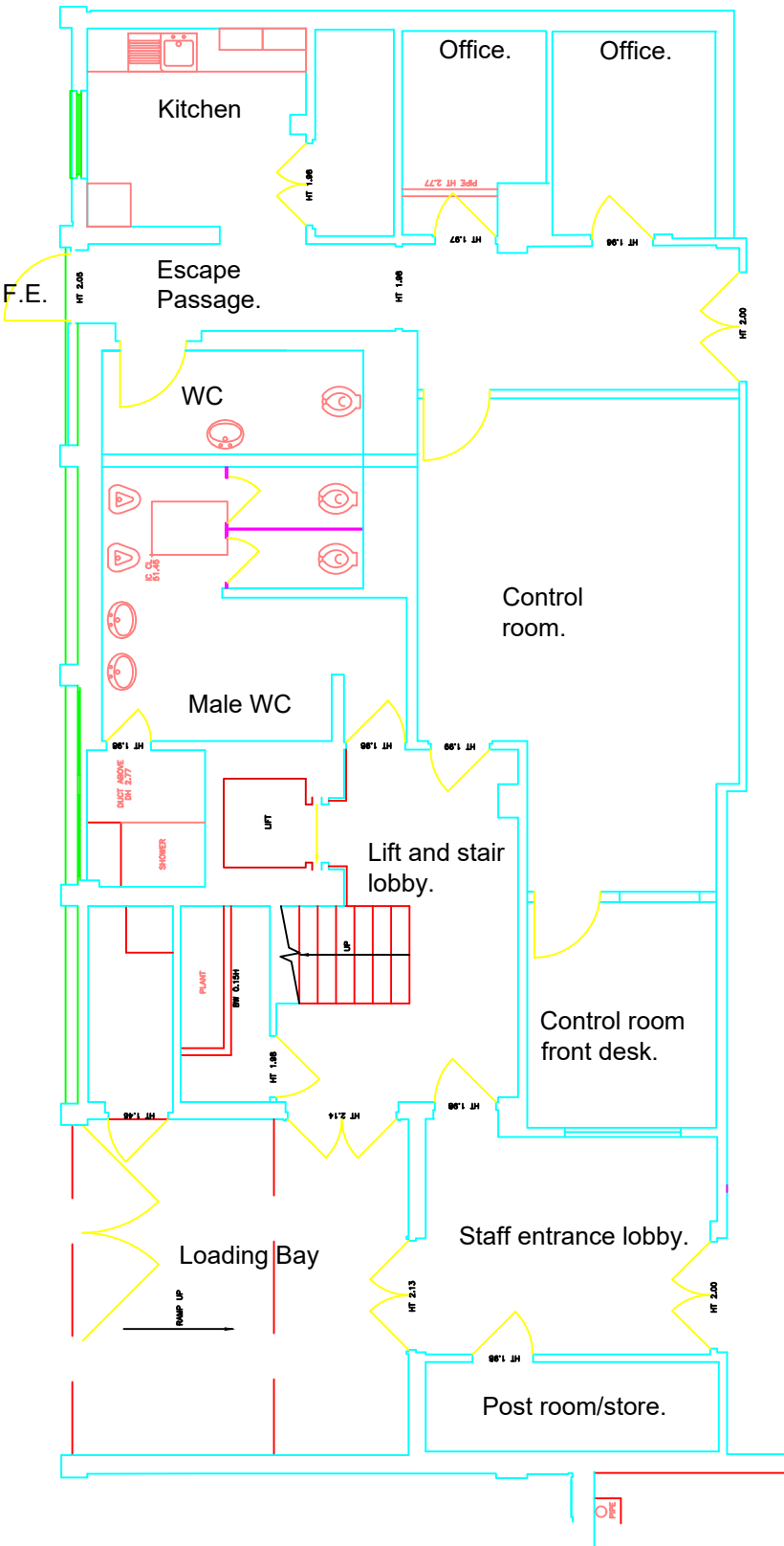
Existing side entrance door to be replaced for 30 minute fire rated door and frame set complete with central vision panel and drill proof secure furniture.

Control room space to have dividing stud wall as shown complete with one way security glass window visible in the direction of the counter. Provisional sum for fitted counter.

Entrance lobby to be prepared and have 2 coats of RAL 9010 emulsion through. Existing doors to be retained, prepared and painted with RAL 9016 Grey satin finish. All furniture to be cleaned off and refinished.



Existing layout.



Proposed layout.