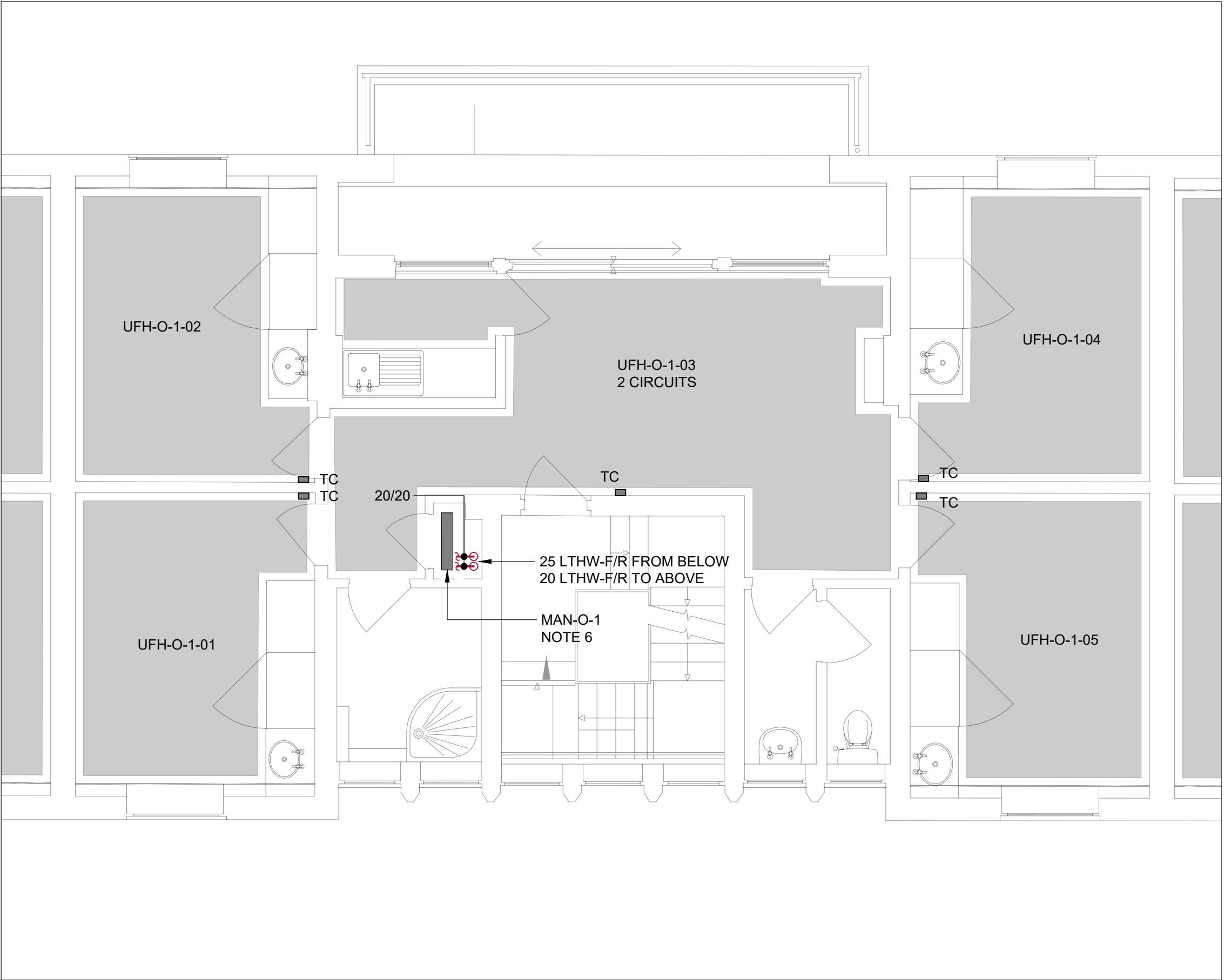
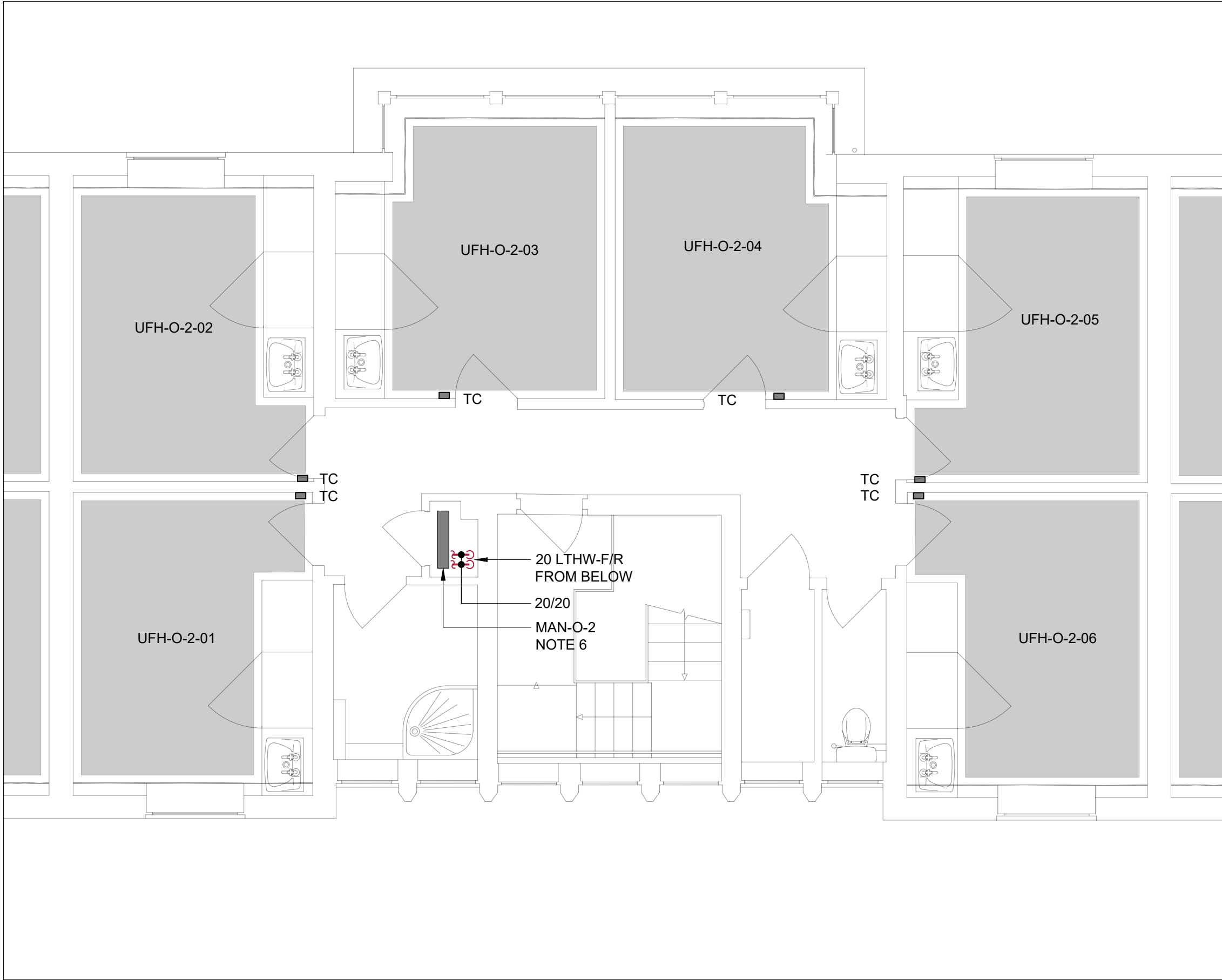


GROUND FLOOR



FIRST FLOOR



SECOND FLOOR

NOTES

- 1. READ THIS DRAWING IN CONJUNCTION WITH THE COVERSHEETS & SCHEDULES
- 2. ALL DIMENSIONS ARE IN mm
- 3. DO NOT SCALE FROM THIS DRAWING
- 4. FLOOR PLANS DO NOT SHOW ALL PIPE SIZES, COMPONENTS & ACCESSORIES, REFER FLOW DIAGRAMS
- 5. TO UNDERGROUND INFRASTRUCTURE; REFER TYPICAL CONNECTION DETAIL
- 6. INSTALL MANIFOLD & ASSOCIATED COMPONENTS ON SUPPORT FRAME AT LOW LEVEL BEHIND EXISTING DOOR; ENSURE ADEQUATE MAINTENANCE ACCESS TO ALL COMPONENTS & EXISTING SOIL STACK
- 7. NOT USED
- 8. DROP FROM HIGH LEVEL WITHIN THICKNESS OF WALL LINING; EXIT THROUGH WALL PENETRATIONS AT 150 AFL; CONTINUE INSULATION THROUGH WALL PENETRATIONS; BUILDING ISOLATION & DRAIN VALVES BEHIND ACCESS PANEL AT LOW LEVEL
- 9. INSTALL TEMPERATURE CONTROLLERS (TC) AT 1350 AFL
- 10. UNDERFLOOR HEATING CONTROLS ARE PART OF THE GENIUS HUB PACKAGE; REFER SEPARATE DOCUMENTATION

LEGEND

- LTHW-F Low Temperature Heating Water - Flow
- LTHW-R Low Temperature Heating Water - Return
- GWS Gray Water Services
- BCWS Boosted Cold Water Service
- MCWS Mains Cold Water Service
- HWS Hot Water Service
- HWS-R Hot Water Service - Return
- DRN Drain
- DRN-CR Drain - Chemical Resistant
- GAS Natural Gas
- ACR Air-conditioning/Refrigeration
- Control Link
- AP Access Panel
- DG Door Grille
- DG-FR Door Grille - Fire Rated
- EXT Extract Air
- EXH Exhaust Air
- FD Fire Damper
- FFL Finished Floor Level
- FSD Fire & Smoke Damper
- ID Iris Damper
- OA Outside Air
- OBD Opposed Blade Damper
- SA Supply Air
- SBD Single Blade Damper
- UFH Under Floor Heating

| Rev | Description | Date |
|-----|-------------|----------|
| T00 | For Tender | 23/10/30 |
| | | |
| | | |
| | | |
| | | |
| | | |
| | | |

| | |
|---------|--|
| Client | Bedford College |
| Site | Shuttleworth College Old Warden Park Biggleswade SG18 9DX |
| Project | PSDS3b |

| | |
|---------------------------------------|-------------------------|
| | |
| www.pandaces.co.uk T: 01908 991130 | |
| Drawing Title | Onley Hall Heating Plan |
| Drawing Ref 02-15 M-LX-13 | |
| Revision T00 | Date 2023/10/30 |
| Scale 1:50 at A1 | Status For Tender |