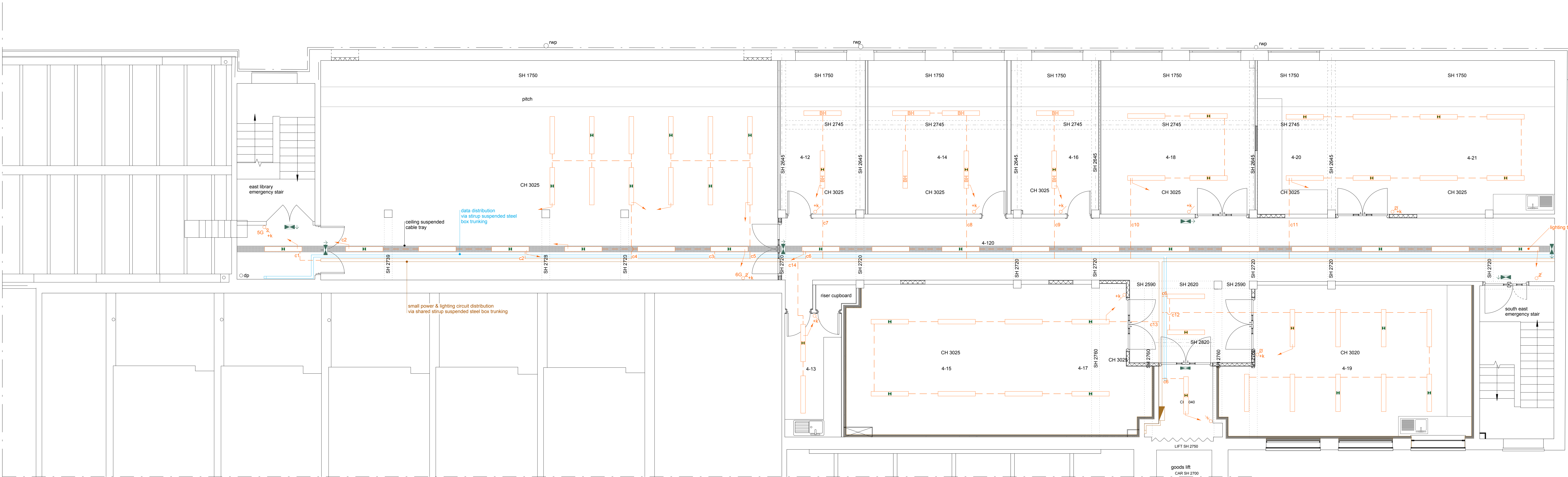
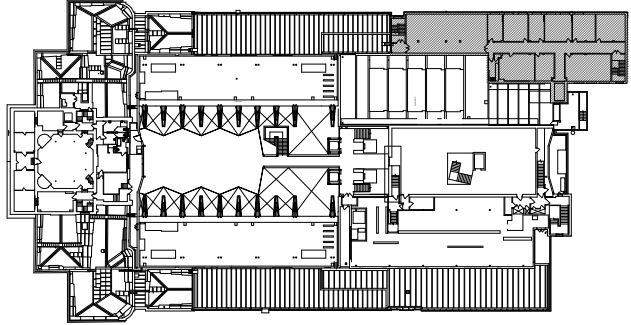


service plan - proposed small power & communications
1:50



service plan - proposed high level
1:50



This drawing is to be read in conjunction with all other contract documentation.
Existing distribution board to be stripped out and renewed with new as per specification.

Small power and lighting cabling to be run in high level 100x100mm section galvanneal steel cable trunking suspended on strut brackets with 25mm galvanneal steel conduit tapped off.

Pull down power outlets are to be ceiling mounted with a 13A pull down socket outlet.
Data cabling will be distributed via high level 75x75mm section galvanneal steel trunking suspended on strut brackets with 25 & 32mm (size to suit) galvanneal steel conduit tapped off.

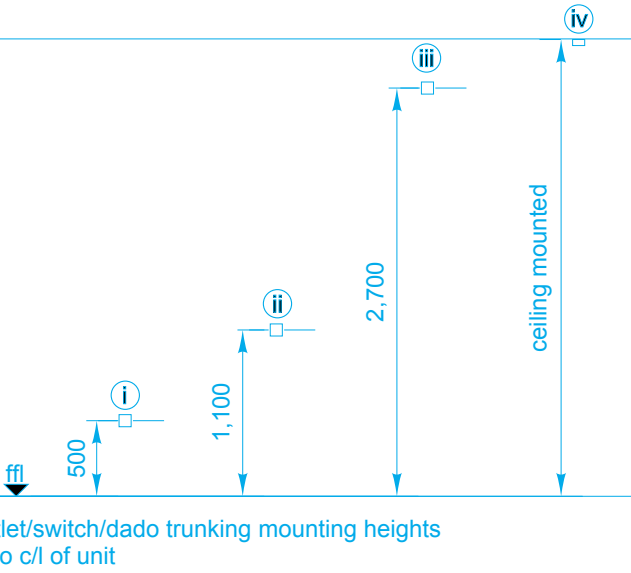
A new data cabinet shall be installed within Lobby area 4-11 with new fibre link run from existing switch panel located on Level 2. A secondary fibre link is to be installed from the new switch panel to the BMS panel located in the mechanical plant room on roof level above Level 4.

All sockets, switches, surface mounted back boxes, shall be MK Metal Clad Plus or equal and approved equivalent.

Existing fire alarm and voice alarm systems to be retained. Addition and/or modifications to the system as indicated will ensure that existing loops are maintained - New detection shall be incorporated into existing loops.

Fire alarm system to be maintained throughout the works. The Contractor shall allow for replacing existing heads and retesting of the system on completion of the works.

- Legend
- electrical distribution board
 - 2 compartment trunking
 - conduit
 - switched double socket outlet
 - switched single socket outlet
 - switched fused connection unit
 - connection unit
 - blanking plate
 - pull down power reel
 - access control power supply
 - single network point
 - double network point
 - single security network point
 - WiFi router
 - conduit
 - LED bulkhead luminaire
 - LED bulkhead luminaire with integral emergency fitting
 - LED suspended luminaire
 - LED suspended luminaire with integral emergency fitting
 - directional emergency luminaire
 - conduit
 - single pole switch
 - 2 gang switch number denotes number of gangs
 - 2 way switch
 - intermediate switch
 - dimmer switch
 - key switch
 - c1 - c14 lighting circuits



08.03.2018	inclusion of 112 leaf door set to south east emergency stair	C
16.02.2018	additions to leak detection & siting of control panel	B
09.02.2018	addition of security network points	A
09.02.2018	additional annotations	
	suspended replaced by bulkhead luminaires within areas 4-12, 4-14 & 4-16	
	corridor suspended luminaires replaced with luminaires fixed to underside of cable tray	
	reduced power & data within area 4-14	
	additional power & data within 4-17	
	reconfiguration of power & data within area 4-20&4-21	
Date		Rev
Neylley Bruton Design		
100 Abchurch Lane London EC4N 3DF		
T: +44 (0)20 7059 9412		
E: info@nb-design.co.uk		
© 2018 NB Design Ltd		
Client		
Trustees of the Imperial War Museum		
Lambeth Road London SE1 6HZ		
Project		
SE Block Level 4 Conversion		
Drawing title		
Proposed Service Plans		
Small Power, Communications & Lighting		

Scale 1:50 @ A0 Date 16.01.2018

DO NOT SCALE FROM THIS DRAWING.
FOR INFORMATION PURPOSES ONLY - NOT FOR CONSTRUCTION.
ALL DIMENSIONS TO BE CHECKED ON SITE AND USED
IN PREFERENCE TO THOSE GIVEN OR SCALED FROM
THIS DRAWING

Drawing N°

Revision letter

A B C

