

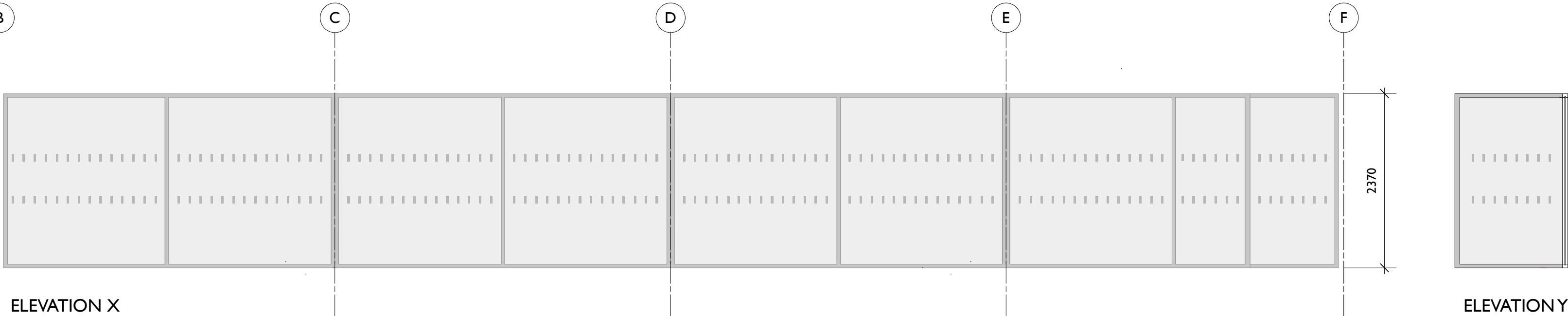
The copyright of this drawing is retained by Alan Leather Associates Ltd.
Do not scale (electronically or by hand).
This drawing is not to be used in whole or part other than for the intended purposes.

All dimensions shown are for pricing purposes, accurate site dimensions to be taken before fabrication commences.

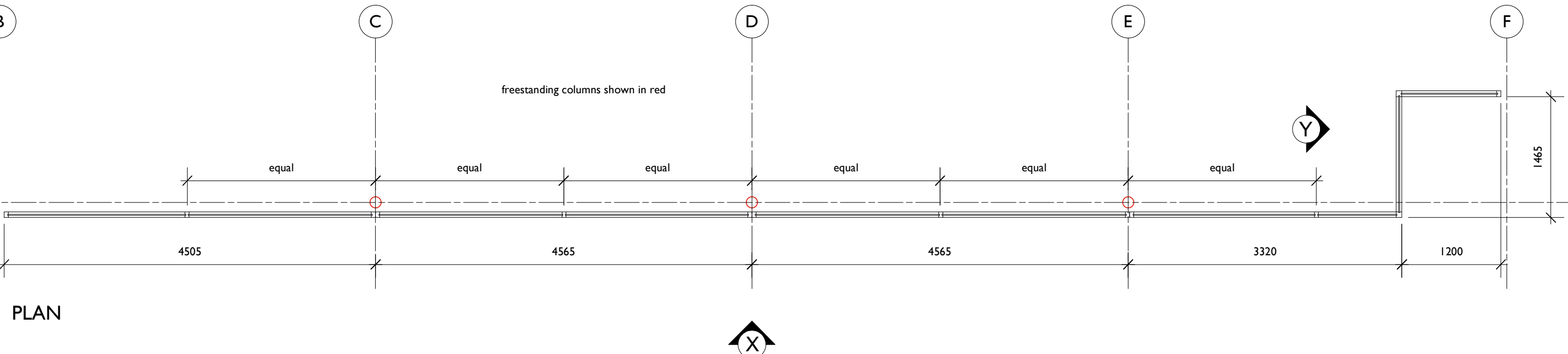
Details shown on this drawing are indicative, fabrication drawings to be supplied for approval before fabrication commences.

Frame RAL colour to be specified

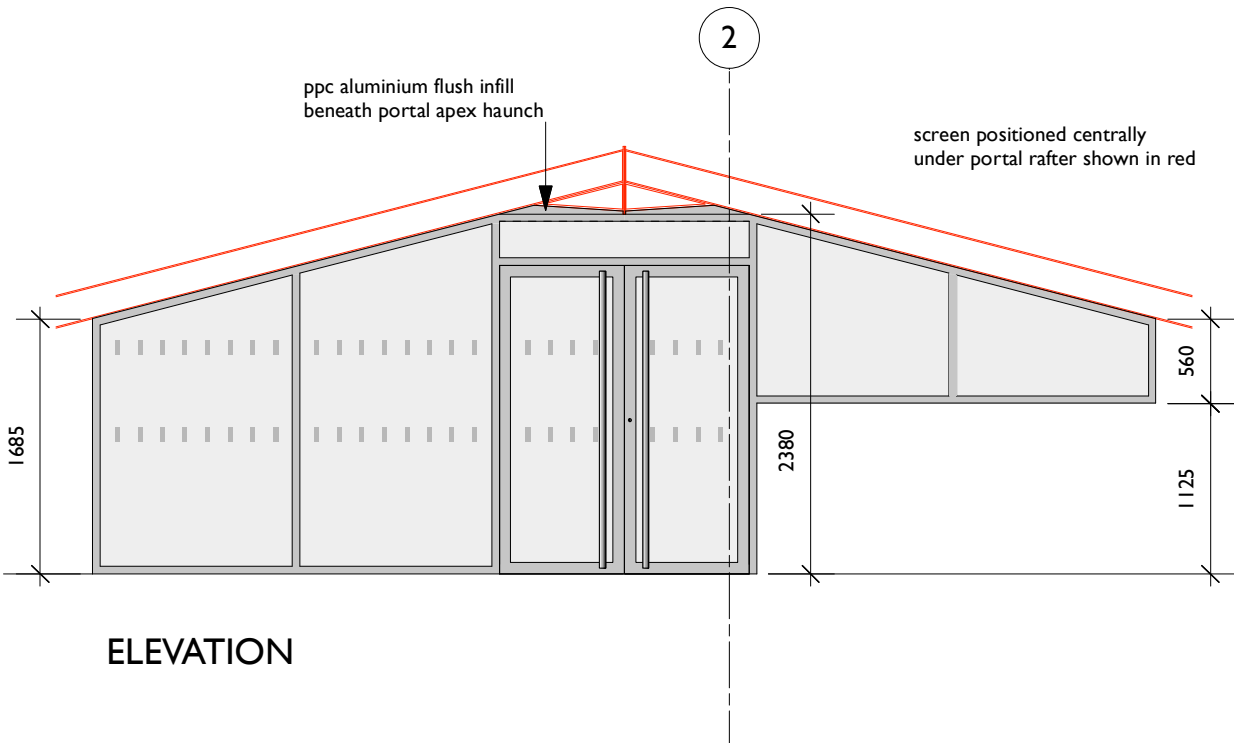
Manifestation markings shown indicatively, to be agreed



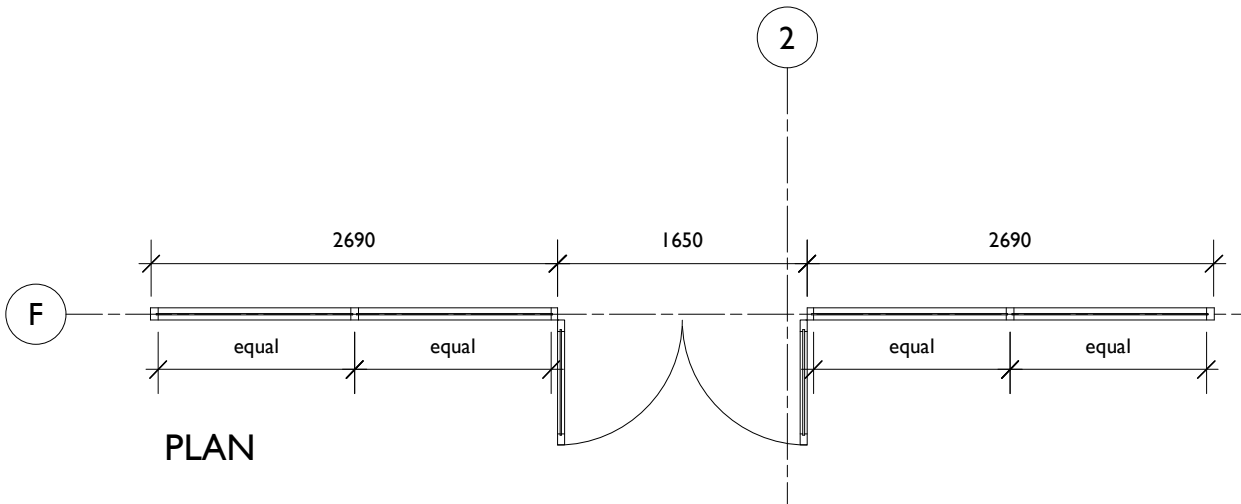
FIRE RATED SCREEN
SG01
30/0 (30 minute integrity, 0 insulation)
ppc steel frames
RAL colour to be agreed



FIRE RATED SCREEN SG01
Scale: 1:50



SCREEN
SG03/DF03
ppc aluminium frames
RAL colour to be agreed
doors self closing with
hold open facility
pole handles
thumb turn lock



SCREEN SG03/DF03
Scale: 1:50

FOR SCREEN SG02 REFER TO DRAWING No. DS 1840 D 04

Revisions:

ala architects

Alan Leather Associates Ltd Chartered Architects
45 Charlestown Road, Charlestown
St Austell, Cornwall, PL25 3NJ

Tel: 01726 65924/67325
Fax: 01726 61480
E-Mail: ala@alanleatherassociates.co.uk

Job:

PHYTOME LIFE SCIENCES LTD.

INTERNAL SCREENS

Date: APRIL 2023 Scale: 1:20 Paper size: A1

Drawn By:

TC

Drawing Number:

DS 1840 D 05

FOR PRICING PURPOSES