



A303 Amesbury to Berwick Down (Stonehenge)

Volume 2 – Scope

Part 9 – Review and Certification

April 2022

Doc Ref: A303-MW-CoD-012-V2-P9-Review and Certification

Table of Contents

Section	Page
Table of Contents	1
1 General Requirements	3
1.1 General	3
1.2 Design Package Submission Plan	3
2 Review process	5
2.1 Initial Assessment	5
2.2 Design Package Review	5
2.3 Category 1 & 2 Design Packages	6
2.4 Category 3 Design Packages	8
2.5 Category 4 Design Packages	8
2.6 Category 5 Design Packages	10
2.7 Category 6 Design Packages	11
2.8 Category 7 Design Packages	12
2.9 Timescales	12
3 Certification Requirements	13
3.1 General	13
3.2 Submission Certificate	13
3.3 Technical approval certificates	13
3.4 Construction Phase Certification	14
3.5 Construction Certificate	14
3.6 Takeover Certificate	15
Annex 1 – Certificates	16
Submission Certificate	17
Certificate for the Design / Assessment ¹ and Check of Highway Structures, including Road and Service Tunnels	20
Geotechnical Certificate	23
Drainage Design Certificate	25
Certificate for Type ‘S’ Temporary Works	26
Certificate for Type ‘P’ Temporary Works	28
Material Testing Certificate	31
Plant Provenance Certificate	32
Ecology Certificate	34
Traffic Management Certificate	35
Construction Certificate	36

Construction Compliance Certificate.....	37
Takeover Certificate	40
Annex 2 – Review Process Flow Charts	41
Figure 1: Category 1 & Category 2 Design Packages	41
Figure 2: Category 3 Design Packages	42
Figure 3: Category 4 Design Packages	43
Figure 4: Category 5 Design Packages	44
Figure 5: Category 6 Design Packages	45
Reference List	46

1 General Requirements

1.1 General

1.1.1 A Design Package is any submission required by the Contract.

1.1.2 Design Packages fall into the following categories

- Category 1 and Category 2 – Design Packages which require consultation and agreement by relevant Others and which includes Pre-commencement DCO activities,
- Category 3 - Design Packages which require consultation with the Stakeholder Design Consultation Group,
- Category 4 – Design Packages which are detailed design
- Category 5 – Design Packages which establish the Contractors processes and procedures for Providing the Works as required by the Scope.
- Category 6 – Design Packages which are PCF products
- Category 7 – Design Packages which are Non-Material Changes to the Development Consent Order

1.1.3 The *Contractor* shall submit the Design Packages to the *Project Manager* for acceptance.

1.1.4 Each Design Package shall have a unique reference.

1.1.5 The *Project Manager* shall coordinate the review of the Design Packages with consultees and any Others giving agreement.

1.1.6 For the purposes of review and consultation periods “days” means Working Day.

1.2 Design Package Submission Plan

1.2.1 The *Contractor* shall submit a Design Package Submission Plan for acceptance by the *Project Manager*.

1.2.2 The Design Package Submission Plan shall identify

- each of the Design Packages the *Contractor* intends to submit and
- the intended submission date for each Design Package.

1.2.3 The Design Package Submission Plan shall allow for the consultation and agreement/acceptance periods stated in Table 2-6 (Design Package Category consultation and acceptance review periods).

1.2.4 The *Contractor* shall not exceed the maximum number of Design Packages stated in Table 2-1 (Maximum number of submissions per week) (including re-submissions).

Table 2-1: Maximum number of submissions per week

Design Package Category	Maximum number of submissions per week
Category 1	3
Category 2	2
Category 3	2
Category 4	5
Category 5	3
Category 6	3

Category 7	1
------------	---

- 1.2.5 A reason for not accepting the Design Package Submission Plan is that
- it will not permit the *Contractor* to achieve the dates stated in the Accepted Programme or
 - the maximum number of Design Packages submitted in a given calendar week is exceeded.
- 1.2.6 The Design Package Submission Plan shall be updated monthly and submitted for acceptance to the *Project Manager*.
- 1.2.7 A reason for not accepting the monthly Design Package Submission Plan is that
- it will not permit the *Contractor* to achieve the dates stated in the Accepted Programme or
 - the maximum number of Design Packages submitted in a given week is exceeded.

2 Review process

2.1 Initial Assessment

- 2.1.1 The *Project Manager* shall undertake an initial assessment of the Design Package and determines its suitability for progressing to the review process.
- 2.1.2 At the end of the initial assessment the *Project Manager* responds to the submitted Design Package. The response shall be
- “accepted for review” or
 - “not accepted for review”.
- 2.1.3 The *Project Manager* shall provide comments explaining why a Design Package has not been accepted for review.
- 2.1.4 A reason for not accepting a Design Package for review is that
- it does not comply with the Scope,
 - it contains insufficient information for a review to be undertaken,
 - it does not address the comments previously made by the *Project Manager* on the corresponding submission,
 - it relies upon a Design Package not yet accepted or
 - it does not comply with the Obligations of the DCO.
- 2.1.5 The *Contractor* shall address the *Project Manager*’s comments and resubmit the Design Package.

2.2 Design Package Review

- 2.2.1 The *Project Manager* submits the Design Package into the relevant review process.
- 2.2.2 The review process for each Category of Design Package is provided in Annex 2 (Review Process Flow Charts).
- 2.2.3 At the end of the review process, the *Project Manager* responds to the submitted Design Package. The response shall be
- “not accepted”,
 - “accepted with comments” or
 - “accepted”.
- 2.2.4 If the response is “not accepted”, the *Project Manager* shall provide comments explaining why a Design Package has not been accepted.
- 2.2.5 A reason for not accepting a Design Package is
- it does not comply with the Scope,
 - it does not demonstrate how it will enable the *Contractor* to comply with the Scope,
 - it does not have the agreement of the relevant Others stated in Table 2-1 (Category 1 Design Packages) or Table 2-3 (Category 2 Design Packages) or
 - it does not comply with the Obligations of the DCO.
- 2.2.6 The *Contractor* shall address the *Project Manager*’s comments and resubmit the Design Package.
- 2.2.7 The process and review periods for resubmitted Design Packages shall be as though the Design Package was being submitted for the first time.

- 2.2.8 If the response is “not accepted”, the *Contractor* shall not progress with the construction of the *works* within the Design Package
- 2.2.9 If the response is “accepted with comments” the *Contractor*
- shall address the comments and submit an updated Design Package to the *Project Manager* along with a schedule explaining how each comment has been addressed and
 - after issue of the notice to proceed may progress with the *works* within the Design Package once the updated Design Package has been submitted.
- 2.2.10 If the response is “accepted” the *Contractor* may, after issue of the notice to proceed, progress with the construction of the *works* within the Design Package.

2.3 Category 1 & 2 Design Packages

- 2.3.1 The Category 1 Design Packages are listed in Table 2-2 (Category 1 Design Packages).

Table 2-2: Category 1 Design Packages

Document	OEMP Ref\DCO Ref	Consultees	Relevant Others	Mobilisation Phase design Deliverable
CEMP	MW-G5	Wiltshire Council Historic England National Trust English Heritage Environment Agency Natural England	SoS	Yes
Emergency Preparedness and Response Plan	MW-G20	Wiltshire Council National Trust Environment Agency Emergency Services	SoS	Yes
Ground Movement Monitoring strategy	MW-CH8	Wiltshire Council Historic England HMAG	SoS	Yes
Landscape and Ecology Management Plan	MW-LAN1	Wiltshire Council Historic England National Trust Natural England Environment Agency	SoS	Yes
Aboriginal Mitigation Strategy	MW-LAN3	Wiltshire Council National Trust	SoS	Yes
Invasive Non-native Species Management Plan	MW-BIO6	Natural England	SoS	Yes
Noise and Vibration Management Plan	MW-NO13	Wiltshire Council Historic England	SoS	Yes

Document	OEMP Ref\DCO Ref	Consultees	Relevant Others	Mobilisation Phase design Deliverable
		National Trust		
Noise Insulation and Temporary Rehousing Plan	MW-NO14	Wiltshire Council	SoS	Yes
Soils Management Strategy	MWGEO3	Wiltshire Council Historic England HMAG Environment Agency	SoS	Yes
Water Management Plan (to include Flood Risk Management Plan)	MW-WAT2 and 12	Wiltshire Council National Trust Environment Agency	SoS	Yes
Groundwater Management Plan	MW-WAT10	Wiltshire Council Natural England Environment Agency	SoS	Yes
Site Waste Management Plan	MW-MAT1	Environment Agency	SoS	Yes
Materials Management Plan	MW-MAT2	Environment Agency	SoS	Yes
Traffic Management Plan	MW-TRA2, 4 and 5	Wiltshire Council Historic England National Trust SDCG Emergency Services	SoS	Yes
Drainage Strategy	DCO Requirement 10	Wiltshire Council Environment Agency	SoS	Yes
Landscaping Scheme	DCO Requirement 8	Wiltshire Council Historic England National Trust	SoS	Yes
Handover Environmental Management Plan	MW-G11	Wiltshire Council Historic England National Trust SDCG emergency services	Wiltshire Council	No

2.3.2 The Category 2 Design Packages are listed in Table 2-3 (Category 2 Design Packages).

Table 2-3: Category 2 Design Packages²

Submission Title ¹	Consultees	relevant Others	Mobilisation Phase design Deliverable
Handover Plan for the De-Trunked Roads	Wiltshire Council	Wiltshire Council	No
Local Roads Detailed Design			No

¹ Refer to Volume 2 Part 10 (Works for the Local Authority).

London Road Junction Works Design			No
Stonehenge Road Parking Monitoring Scheme			No
A345/London Road Junction Monitoring Scheme			Yes
Bulford Monitoring Scheme			Yes

2.3.3 The review process for Category 1 & 2 Design Packages shall be as shown in Annex 2 Figure 1 (Category 1 & Category 2 Design Packages).

2.4 Category 3 Design Packages

2.4.1 The Category 3 Design Packages are listed in Table 2-4 (Category 3 Design Packages).

Table 2-4: Category 3 Design Packages

Document	DCO Work ref	Consultees
External appearance of tunnel service buildings	1D(ii)	SDCG comprising: English Heritage Historic England National Trust Wiltshire Council
Portal Structures	1E(ii) and 1G(iii)	
Retaining Walls within the WHS	1D(ii), 1H(ii) and 1H(iii)	
Green Bridge Four	1d(i)	
All gating, signage and fencing within the WHS	-	
Longbarrow Junction signing & signalling	1C(ii)	
Countess Junction Flyover, signing, signalling and lighting	1H(iv)	
Public rights of way within the WHS	-	

2.4.2 The review process for Category 3 Design Packages shall be as shown in Annex 2 Figure 2 (Category 3 Design Packages).

2.4.3 The *Contractor* shall submit Category 3 Design Packages fifteen (15) Working Days in advance of a SDCG review meeting.

2.4.4 SDCG review meetings shall be held monthly.

2.4.5 The *Contractor* shall attend the SDCG review meeting and shall

- record the minutes of the SDCG meeting including a summary of any comments raised at the meeting and
- update the Design Package addressing the comments made at the SDCG meeting. and
- resubmit the updated Design Package as a Category 4 Design Package to the *Project Manager* for acceptance.

2.4.6 The *Project Manager* shall confirm that the minutes and updated Design Package are an accurate reflection of the meeting and any comments raised and circulate both minutes and updated Design Package to the SDCG.

2.4.7 The *Contractor* shall develop the Category 4 Design Package based on the accepted Category 3 Design Package.

2.5 Category 4 Design Packages

2.5.1 Category 4 Design Packages are those which are detailed design.

2.5.2 Category 4 Design Packages may require a two stage acceptance process depending on the *works* to which they relate.

- 2.5.3 The two stages of Category 4 Design Package acceptance are
- pre-design technical approval and
 - detailed design acceptance.
- 2.5.4 Pre-design technical approvals are required for the design of *works* which
- fall within the scope of CG 300 'Technical approval of highway structures' [1] or
 - fall outside the scope of CG 300 'Technical approval of highway structures' [1] but require a departure from standard
- 2.5.5 The design of the following *works* fall within the scope of CG 300 'Technical approval of highway structures' [1] are
- highway structures,
 - road tunnels,
 - mechanical and electrical systems and
 - temporary works.
- 2.5.6 Category 4 Design Packages which fall outside the scope of CG 300 'Technical approval of highway structures' [1] and do not require a departure from standard do not need pre-design technical approval.
- 2.5.7 Category 4 Design Packages which satisfy paragraph 2.5.6 shall be submitted for detailed design acceptance only.

Pre-design technical approval

- 2.5.8 The *Contractor* shall submit the following documents to the *Project Manager* for pre-design technical approval
- Approval in Principle (in accordance with CG 300 'Technical approval of highway structures' [1]),
 - Geotechnical Reports (in accordance with CD 622 'Managing geotechnical risk' [2]) and
 - Departures from Standards.
- 2.5.9 Departures shall be submitted in accordance with the *Client's* Departure Approval System (DAS)².
- 2.5.10 Each submission for pre-design technical approval shall be accompanied by a signed Submission Certificate and all technical approval certificates required by the Design Manual for Roads and Bridges (DMRB) [3].
- 2.5.11 The *Contractor* shall not commence detailed design activities until the *Project Manager* has returned a Submission Certificate endorsed as either "accepted" or "accepted with comments".
- 2.5.12 A reason for not accepting a document submitted for pre-design technical approval is that
- it does not comply with the Scope,
 - it contains insufficient information for a review to be undertaken,
 - it does not address the comments previously made by the *Project Manager* on the corresponding submission,
 - it relies upon a Design Package not yet accepted or
 - it does not comply with the Obligations of the DCO.

² The Departures Manual Revision 1 is provided within Volume 5 (Data Room) of the contract.

- 2.5.13 The review process for pre-design technical approvals is shown in Annex 2 Figure 3 (Category 4 Design Packages).

Detailed design acceptance

- 2.5.14 The *Contractor* shall submit Category 4 Design Packages to the *Project Manager* for acceptance.
- 2.5.15 A Category 4 Design Package shall include
- signed Submission Certificate,
 - signed technical approval certificates (where required by the DMRB [2]),
 - drawings generated from the Project Information Model (PIM),
 - Manual of Contract Documents for Highway Works (MCHW) [4] specification appendices appropriate to the submission.
- 2.5.16 Unless requested by the *Project Manager* the following are not required to be submitted:
- calculations and
 - steel reinforcing bar schedules.
- 2.5.17 The *Contractor* may submit the design for acceptance in parts if the design of each part can be assessed fully for compliance with the requirements of the Scope.
- 2.5.18 The review process for Category 4 Design Package acceptance shall be as shown in Annex 2 Figure 3 (Category 4 Design Packages).

2.6 Category 5 Design Packages

- 2.6.1 The Category 5 Design Packages are listed in Table 2-5 (Category 5 Design Packages).

Table 2-5: Category 5 Design Packages

	Document	Document Section Ref.	Mobilisation Phase design Deliverable
Volume 2 Part 1 General Requirements	Customer delivery plan	S 251	Yes
	Behaviour Maturity Plan	S 295	Yes
	Leadership Plan	S 2905	Yes
	Project Execution Plan	S 2910	Yes
	Supply Chain Engagement Plan	S 2915	Yes
	Quality plan	S 610.1	Yes
	Monthly progress report	S 850.4	No
	Construction Phase Plan	S 1110.2	Yes
	Information Execution Plan	S 1905.1	Yes
Volume 2 Part 4 Maintenance Period Requirements	Tunnel Closure Management Plan	3.1.1	No
	Operations Interface Plan	4.2	No
	Incident Response Plan	4.3	No
	Proposals for repairs and renewals	5.5	No
	Asset Management Strategy	5.7	No
	Asset Management Forward Plan - Annual Asset Management Plan	5.8	No
	Asset Management Forward Plan - Five-year Asset Management Plan	5.8	No

	Document	Document Section Ref.	Mobilisation Phase design Deliverable
	Asset Management Forward Plan - Ten-year Asset Management Plan	5.8	No
	Condition Reports - Initial Condition Report	5.9	No
	Condition Reports - Monthly Condition Report	5.9	No
	Condition Reports - Annual Condition Report	5.9	No
	Updated programme of planned activities	5.9	No
	Maintenance Services Handover Schedule	6	No
	Picture book for road restraint systems	A3.3	No.
Volume 2 Part 5 Digital Construction Requirements	BIM Execution Plan	1.3	Yes
	Information Security Management Plan	2.1	Yes
	Information Services (IS) Strategy	4.2	Yes
Volume 2 Part 7 Communications, Stakeholder and Community Engagement Requirements	Stakeholder Engagement Plan	2.1	Yes
	Community Relations Plan	2.2	Yes
Volume 2 Part 8 Integrated Project Controls	Integrated Project Controls Plan	2.1.1	Yes
	Mobilisation Phase Forecast [1 week PM turnaround]	2.2.15	No
	QSRA & QCRA Report	2.3.4	No
	Period End Report	2.4.5	No
	Health, Safety and Welfare Period End Report	2.5.2	No
	Performance Management Report	2.6.1	No
	Quality Progress Report	2.7.1	No
	Customer Interaction Report	2.8.1	No

2.6.2 The review process for Category 5 Design Packages shall be as shown in Annex 2 Figure 4 (Category 5 Design Packages).

2.7 Category 6 Design Packages

2.7.1 Category 6 Design Packages are PCF products required by the Scope.

2.7.2 The Category 6 Design Packages are listed in item MW_7_1_45 "A303 PCF Product Matrix" Volume 5 (Data Room).

2.7.3 The review process for Category 6 Design Packages shall be as shown in Annex 2 Figure 5 (Category 6 Design Packages).

2.8 Category 7 Design Packages

- 2.8.1 Category 7 Design Packages are those which are applications for a Non-Material Change to the DCO.
- 2.8.2 The *Contractor* shall prepare and submit all of the information requested by the *Project Manager* to support a Non-Material Change application.

2.9 Timescales

- 2.9.1 Table 2-6 (Design Package Category consultation and acceptance review periods) gives the consultation, agreement and review periods for each Category of Design Package.

Table 2-6: Design Package Category consultation and acceptance review periods

	Time (Working Days)						
	Cat 1	Cat 2	Cat 3	Cat 4	Cat 5	Cat 6	Cat 7
Notice of submission period	10	10	10	10	-	10	10
Acceptance for review	5	5	5	5	5	5	5
Consultation Period 1	20	20	-	-	-	15	-
SDCG review in advance of SDCG meeting	-	-	10	-	-	-	-
SDCG meeting	-	-	1	-	-	-	-
<i>Contractor's</i> Design Package update following SDCG meeting	-	-	<i>Contractor</i> defined	-	-	-	-
<i>Project Manager</i> review and issue of comments	10	10	-	-	-	-	-
Design Package update period 1	<i>Contractor</i> defined		-	-	-	<i>Contractor</i> defined	-
Consultation period 2	10	10	-	-	-	15	-
<i>Project Manager</i> review and issue of comments	5	5	-	-	-	-	-
Design Package update period 2	<i>Contractor</i> defined		-	-	-	<i>Contractor</i> defined	-
Agreement by Others period	40	25	-	-	-	-	130
PMSRO Review	-	-	-	-	-	10	-
Pre-design technical approval	-	-	-	30	-	-	-
<i>Contractor</i> design period	-	-	-	<i>Contractor</i> defined	-	-	-
Detailed Design acceptance	5	5	-	30	-	-	-
PCF SGAR	-	-	-	-	-	1	-
<i>Project Manager</i> review	-	-	-	-	10	-	-

- 2.9.2 The time periods stated above in Table 2-6 (Design Package Category consultation and acceptance review periods) shall run consecutively.
- 2.9.3 The time periods for the review of resubmitted Design Packages shall be the same as those stated for the first review in Table 2-6 (Design Package Category consultation and acceptance review periods).

3 Certification Requirements

3.1 General

- 3.1.1 The *Contractor* shall use the form of certificates provided in Annex 1 (Certificates).
- 3.1.2 Prior to the submission of a certificate to the *Project Manager*, all parties (other than the Technical Approval Authority and *Project Manager*) indicated on the certificate, shall digitally sign it with the name and position held in the relevant organisation of each signatory clearly indicated.
- 3.1.3 Digital signatures shall be in accordance with Volume 2 Part 5 (Digital Construction Requirements) of the contract.

3.2 Submission Certificate

- 3.2.1 The *Contractor* shall submit a signed Submission Certificate with each Design Package regardless of Category.
- 3.2.2 Where the *Contractor* considers a requirement, relevant to the Design Package being submitted, of the Development Consent Order to be subjective, the *Contractor* may include the subjective requirement in Annex A to the Submission Certificate for review by the *Project Manager*.
- 3.2.3 The *Contractor* shall not include in Annex A any requirement that is not a subjective requirement of the Development Consent Order.

3.3 Technical approval certificates

- 3.3.1 Technical approval certificates, where required by the DMRB [3], shall be provided in addition to the Submission Certificate.
- 3.3.2 Technical approval certificates shall be included as part of the Category 4 Design Packages submitted by the *Contractor* to the *Project Manager*.

Highway Structures, Road Tunnels and Mechanical & Electrical Systems

- 3.3.3 The technical approval and certification of highway structures, road tunnels and mechanical & electrical systems shall comply with the requirements of CG 300 'Technical approval of highway structures' [1].
- 3.3.4 A category 3 check, in accordance with CG 300 'Technical approval of highway structures' [1], shall be undertaken for the following
- River Till Viaduct,
 - Tunnel – main bore,
 - Tunnel – portal structures including the plant and equipment buildings and
 - Tunnel – Mechanical & Electrical Systems.

Geotechnical design

- 3.3.5 The *Contractor* shall provide Geotechnical Certificates in accordance with CD 622 'Managing geotechnical risk' [2].

Drainage

- 3.3.6 The *Contractor* shall include a signed Drainage Design Certificate in accordance with CG 502 'The certification of drainage design' [5] with each drainage design submission.

Temporary Works

- 3.3.7 The certification of temporary works proposals shall be in accordance with CG 300 'Technical approval of highway structures' [1].
- 3.3.8 For Type P proposals the *Contractor* shall submit an AIP for the proposal.

3.4 Construction Phase Certification

- 3.4.1 The *Contractor* shall submit certificates for the construction of the *works* confirming that the *works* comply with the requirements of the Scope.

Material Testing

- 3.4.2 The *Contractor* shall submit monthly Materials Testing Certificates confirming that the testing complies with the requirements of the Scope.

Plant Provenance

- 3.4.3 The *Contractor* shall certify the provenance of the plants used in the landscaping scheme.
- 3.4.4 The planting schedule shall be appended to the Plant Provenance certificate.

Ecology

- 3.4.5 The *Contractor* shall submit an Ecology Certificate on completion of the relevant ecological works.

Traffic Management

- 3.4.6 The *Contractor* shall certify that each traffic management installation is in accordance with the contract.

3.5 Construction Certificate

- 3.5.1 The *Contractor* shall submit Construction Certificates for all elements of the *works* that have been through the Category 4 Design Package review process.
- 3.5.2 As a minimum, the *Contractor* shall submit Construction Certificates with the following breakdown of the *works*
- per section of the *works*, then
 - per individual earthworks cutting or embankment within each section,
 - per individual drainage network within each section,
 - per each 1 km (or less) section of pavement within each section,
 - per each 1 km (or less) of all other roadworks within each section and
 - per individual structure within each section, with each structure being further sub-divided into substructure and superstructure.
- 3.5.3 The *Project Manager* shall endorse each Construction Certificate on completion of the *works* as either
- “accepted”,
 - “accepted with comments” or
 - “not accepted”.
- 3.5.4 A reason for not accepting a Construction Certificate is
- the Design Package has not been constructed, tested or commissioned in accordance with the accepted construction drawing, specifications and schedules or

- the execution of the *works* has not been accurately translated into the PIM.

3.5.5 The *Contractor* shall provide an overarching Construction Certificate for each *section* upon completion of each *section* of the *works*.

Construction Compliance Certificate

3.5.6 The *Contractor* shall submit a Construction Compliance Certificate, in addition to the Construction Certificate, for all elements of the *works* which required pre-design technical approval.

3.6 Takeover Certificate

3.6.1 The *Contractor* shall submit a Takeover Certificate for each section of the *works* as they are handed over to the *Client* or other body.

Annex 1 – Certificates

This Annex includes templates for the certificates to be prepared by *Contractor*.

The following is a list of the template certificates appearing in this Annex:

- Submission Certificate

Technical approval certificates

- Design and Check Certificate
- Geotechnical Certificate
- Drainage Certificate
- Certificate for Type 'S' Temporary Works
- Certificate for Type 'P' Temporary Works

Construction phase certificates

- Material Testing Certificate
- Plant Provenance Certificate
- Ecology Certificate
- Traffic Management Certificate
- Construction Compliance Certificate
- Construction Certificate

Takeover certificates

- Takeover Certificate

Submission Certificate

Name of Project A303 Amesbury to Berwick Down (Stonehenge)

Name of Design Package

Design Package Reference

1. In accordance with clause Z104 of the contract, nothing on this certificate relieves the *Contractor* of its obligations under the contract.
2. The Design Package consists of the following documents:
(List)
3. The following technical approval certificates are enclosed (where required)
(List)
4. The elements of Scope listed in Annex A are submitted as satisfying the *Client's* requirements (see Volume 2, Part 9, paragraph 3.2 of the Scope)

Signed

Name

Position *Contractor's Principal*

Engineering Qualifications 1

Name of Organisation

Date

5. This Design Package is accepted for review \ not accepted for review. 2
(comments – if applicable)

Signed

Name

Position *Project Manager*

Engineering Qualifications 1

Name of Organisation

Date

6. This Design Package is accepted \ accepted with comments \ not accepted.
(comments – if applicable)

2

Signed

Name

Position

Project Manager

Engineering Qualifications

1

Name of Organisation

Date

Notes

- 1 Engineer with CEng MICE, CEng MStructE or equivalent.
2 Delete as appropriate

Annex A to the Submission Certificate

The following Scope requirements are satisfied based on the contents of this Design Package, subject to the comments listed

Item	Scope requirement reference	Comments	Status
1.			accepted / accepted with comments / not accepted ²
2.			accepted / accepted with comments / not accepted ²
3.			accepted / accepted with comments / not accepted ²
4.			accepted / accepted with comments / not accepted ²
5.			accepted / accepted with comments / not accepted ²

but in all other respects clause Z104 of the *additional conditions of contract* applies to the *Contractor's* submission.

Certificate for the Design / Assessment¹ and Check of Highway Structures, including Road and Service Tunnels

Name of Project A303 Amesbury to Berwick Down (Stonehenge)
Name of Structure
Structure Reference No.

Section 1

We certify that reasonable professional skill and care has been used in the preparation of the design / assessment¹ and/or check¹ of (name of structure) with a view to securing that:²

1. It has been designed/assessed¹ and or checked¹ in accordance with 2
 - a) The following standards; or ³
 - b) The Approval in Principle dated (date) including the following: ^{4,5,6}
2. It has been checked for compliance with:
 - a) The relevant standards in 1); or ⁷
 - b) The assessed capacity of the structure, or elements of the structure, is as follows: ⁸
- (iii) It has been accurately translated into construction drawings and bar bending schedules (all of which have been checked)⁹. The unique number of these drawings and schedules are:

Signed
Name
Position Designer's Team Leader
Engineering Qualifications 11
Name of Organisation
Date

Signed
Name
Position Designer's Principal 12
Engineering Qualifications
Name of Organisation
Date

Signed

Name

Position

Checker's Team Leader

Engineering Qualifications

11

Name of Organisation

Date

Signed

Name

Position

Checker's Principal

12

Engineering Qualifications

10

Name of Organisation

Date

Section 2

The departures and additional criteria given in paragraph 1 are agreed ¹³

The certificate is accepted by the TAA

Signed

Name

Position

Engineering Qualifications

14

TAA

Date

Notes

- 1 Delete as appropriate.
- 2 Where several similar Category 0 or 1 structures occur in a project, they may be listed on one certificate.
- 3 Used for Category 0 only. Insert relevant current Standards including amendments to date. This certificate should be accompanied by a general arrangement drawing.
- 4 Not required for Category 0. Insert date of agreement of the AIP by the TAA including the dates of any addenda. Note the AIP is valid for three years after the date of agreement by the TAA. If the construction has not yet commenced within this period, the AIP should be re-submitted to the TAA for review.
- 5 List any Departures and additional methods, criteria or specification clauses.
- 6 For the certification of M&E functions for highway structures, include here the reference number and date of the relevant safety consultation document.
- 7 Not Used.
- 8 Used for assessments only. Assessed capacity is to be recorded in National Highways' management system for structures.
- 9 The statement "(all of which have been checked)" is not applicable to Categories 2 and 3 design certificates.
- 10 Delete as appropriate or repeat two columns if they are signed by both Design / Assessment and Check Teams.
- 11 CEng MICE, CEng MIStructE or equivalent, but this qualification can be relaxed for Categories 0 and 1 with the agreement of TAA.
- 12 A Principal of the organisation responsible for the design, assessment or check.

- ¹³ Delete as appropriate. Note: not permitted for categories 0 or 1 unless the TAA considers that the departure has little or no structural implication.
- ¹⁴ An engineer with appropriate qualification and experience for Categories 0 and 1, and with CEng MICE, CEng MIStructE or equivalent for Categories 2 and 3.

Name of Project	A303 Amesbury to Berwick Down (Stonehenge)
Geotechnical Activity	
Reference No.	

- Signed _____
Name _____
Position _____ *Contractor's Principal*
Engineering Qualifications _____
Name of Organisation _____
Date _____

- Signed _____
Name _____
Position _____ Overseeing Organisations Geotechnical Advisor
Engineering Qualifications _____

A303 Amesbury to Berwick Down (Stonehenge)
Geotechnical Certificate



Name of Organisation

Date

Drainage Design Certificate

Name of Project A303 Amesbury to Berwick Down (Stonehenge)

Section of drainage

Reference No.

1. We certify that the documents listed below have been prepared by us with reasonable professional skill, care and diligence, and that in our opinion:
 - a) Accurately represent the work required by the Overseeing Organisation;
 - b) With exception of any departure from standards stated below, have been prepared in compliance with LA 113 and CG 501.
 - c) constitute an appropriate drainage design for the scheme; and
 - d) Enable an appropriate drainage system to be constructed and managed in accordance with the Manual of Contract Documents for Highway Works.
2. List of Documents
[List here all drawings (titles and numbers) and specification documents and any other works information necessary for the construction of the drainage works]
3. Departures from standard (where applicable)
[Give date and reference number of all approved departures from standards]
4. [Give date and reference number of the report]
On behalf of [name of organisation] I hereby certify the drainage design has been undertaken in accordance with items 1 and 3 above and accurately translated into the requirements for construction give at item 2 above.

Signed

Name

Position Designer's Team Leader

Engineering Qualifications

Name of Organisation

Date

On behalf of [name of organisation – to be the same as the designer's organisation], I hereby certify that the above signatory has the necessary knowledge and competence to undertake the drainage design covered by this certificate.

Signed

Name

Position Designer's Principal

Engineering Qualifications

Name of Organisation

Date

Certificate for Type 'S' Temporary Works

Project details:

Name of project A303 Amesbury to Berwick Down (Stonehenge)

Name of structure

Structure ref. No.

Section 1

We certify that reasonable professional skill and care has been used in the checking of the design for the (name of temporary works) comprising (description of temporary works)² listed in the attached schedule.

We also certify, but without undertaking any responsibility other than towards (name of organisation procuring the temporary works) that in our opinion the erection proposals and proposed temporary works details specified in the attached schedule for the execution of (project title) are satisfactory for the proper discharge of his responsibilities, for the safety of the said part of the Works and for their safe execution in accordance with the drawings and specification and without detriment to the related permanent works^{3,4}.

Signed

Name

Position Temporary Works Checker

Engineering Qualifications

5

Name of Organisation

Date

Signed

Name

Position

Engineering Qualifications

Name of Organisation Contractor's Principal

Date

Section 2

The permanent works designer is satisfied that the temporary works have no detrimental effects on the permanent works.⁶

Signed

Name

Position Designer's Principal (Permanent Works)

Engineering Qualifications

5

Name of Organisation

Date

Notes

- 1 A copy of this certificate should be forwarded to the TAA for retention with the AIP, except for Category 0, for the permanent structure to which it relates.
- 2 The description to be inserted must define unambiguously the extent of the structure to which the check is to be applied. Where necessary the extent of the Works must be shown on the drawings and the relevant Drawing numbers stated.
- 3 Delete 'and without detriment to the related Permanent Works' if the check is carried out by Permanent Works designer.
- 4 If there is a detrimental effect on the Permanent Works, an Addendum to the Permanent Works AIP must be submitted to the TAA for review.
- 5 Engineer with appropriate qualification and experience for Categories 0 and 1, and with CEng MICE, CEng MIStructE or equivalent for Categories 2 and 3.
- 6 This clause is not required if the check is carried out by permanent works designer.

Certificate for Type 'P' Temporary Works

Project details:

Name of project A303 Amesbury to Berwick Down (Stonehenge)

Name of structure

Structure reference no.

Section 1

We certify that reasonable professional skill and care has been used in the preparation of the design / check¹ of the temporary works comprising (description of temporary works) with a view to securing that:

- 1) It has been designed/checked¹ in accordance with:
 - a) The Approval in Principle dated (date) including the following: ^{2,3}
 - b) The TAA directives for the items listed in 3.ii below. ¹
- 2) The design Proposals reflect the requirements of the relevant highway authorities for all affected highways.
- 3) The design of the temporary works has been accurately translated into temporary works drawings. The unique numbers of these drawings and schedules are:

Signed

Name

Position Designer's Team Leader

Engineering Qualifications

4

Name of Organisation

Date

Signed

Name

Position Designer's Principal

5

Engineering Qualifications

Name of Organisation

Date

Section 2

This certificate is received⁶

Signed

Name

Position Contractor's Principal

Engineering Qualifications

Name of organisation

Date

Section 3

- 1) The departures and additional criteria given in paragraph 1 are agreed. ¹
- 2) It has been directed that the following items are to be dealt with as described. ^{1,7}

Section 4

- 1) The Permanent Works Designer is satisfied that the temporary works have no detrimental effects on the permanent works ⁸

Signed

Name

Position Designer's Principal (Permanent Works)

8

Engineering Qualifications

4

Name of Organisation

Date

Section 5

We have considered and recommend the TAA to accept this certificate ⁹

Signed

Name

Position *Project Manager*

Engineering Qualifications

4

Name of Organisation

Date

Section 6

The certificate is accepted by the TAA ¹⁰

Signed

Name

Position

Name of Organisation

Engineering Qualifications

4

TAA

Date

Notes

- 1 Delete as appropriate.
- 2 Insert date of acceptance of the AIP by the TAA including the dates of any addenda
- 3 List any Departures and additional methods or criteria
- 4 CEng MICE, CEng MIStructE or equivalent
- 5 A Principal of the organisation responsible for the design\check
- 6 This is to be completed by the organisation that procures the temporary works. This certificate is to be accepted by the TAA before consent to proceed can be given
- 7 Describe the point at issue and the directed course of action.
- 8 Not applicable to design certificate. Not necessary for existing structures if agreed by the TAA.
- 9 This is to be completed by the employer's representative on site when applicable.
- 10 The TAA should inform of its acceptance of this certificate to the organisation that procures the temporary works so that work may then proceed.

Material Testing Certificate

Name of Scheme A303 Amesbury to Berwick Down (Stonehenge)

Material Test Certificate Ref.

Period covered

1. We certify that the material(s) scheduled below and incorporated into the Works in the period [date] to [date] has\have¹ been tested in accordance with the Scope and has\have¹ performed successfully.

Signed

Name

Position Designer's Principal

Engineering Qualifications 2

Name of Organisation

Date

Signed

Name

Position Contractor's Principal

Engineering Qualifications 2

Name of Organisation

Date

2. The certificate is accepted¹ \ accepted with comments¹ \ not accepted¹ by the *Project Manager*:

Signed

Name

Position Project Manager

Engineering Qualifications 2

Name of Organisation National Highways

Date

Notes

¹ Delete as appropriate.

² CEng MICE, CEng MStructE or equivalent

Plant Provenance Certificate

Name of Project A303 Amesbury to Berwick Down (Stonehenge)
Landscaping Area
Provenance Certificate Ref.

1. We certify that the provenance / origin of the United Kingdom native plant stock incorporated in the Works are as identified in the plant schedule attached to this certificate.

Signed

Name

Position Designer's Principal

Engineering Qualifications

1

Name of Organisation

Date

Signed

Name

Position Contractor's Principal

Engineering Qualifications

1

Name of Organisation

Date

2. The certificate is accepted¹ \ accepted with comments¹ \ not accepted¹ by the *Project Manager*:

Signed

Name

Position Project Manager

Engineering Qualifications

1

Name of Organisation National Highways

Date

Notes

- ¹ CEng MICE, CEng MStructE or equivalent

A303 Amesbury to Berwick Down (Stonehenge)*Plant Provenance Certificate*

Botanical Name	Quantity	Form\Age	Height (cm)	Zone of Provenance and Location	Forestry Commission Local Provenance Certificate No.	Approx. Date Propagation Material Collected	Nursery(s) where the plants have been grown

Ecology Certificate

Name of Project A303 Amesbury to Berwick Down (Stonehenge)

Ecology Survey Ref.

Area Surveyed

1. We certify that we have used reasonable professional skill and care in surveying and inspecting (description of area) on (date) and confirm:

- a. There were no environmental features in that area on that date that were at risk from the Works; and
- b. Areas adjacent to that area have been suitably protected from damage and nuisance

Signed

Name

Position Ecological Clerk of Works

Engineering Qualifications

1

Name of Organisation

Date

Signed

Name

Position Contractor's Principal

Engineering Qualifications

2

Name of Organisation

Date

2. The certificate is accepted¹ \ accepted with comments¹ \ not accepted¹ by the *Project Manager*.

Signed

Name

Position Project Manager

Engineering Qualifications

2

Name of Organisation National Highways

Date

Notes

¹ CEcol or equivalent.

² CEng MICE, CEng MIStructE or equivalent

Traffic Management Certificate

Name of Scheme A303 Amesbury to Berwick Down (Stonehenge)

Traffic Management Phase

Traffic Management Ref.

1. We certify that the traffic management measures comprising:
 - i) Have been designed in accordance with the Contract
 - ii) Incorporate appropriate arrangements for traffic safety and control
 - iii) Have been agreed with the highway authority and the Police

2. The traffic management measures have been translated into traffic management drawings and schedules.
The unique numbers of these drawings and schedules are:

Signed

Name

Position

Contractor's Principal

Engineering Qualifications

Name of Organisation

Date

3. The certificate is accepted¹ \ accepted with comments¹ \ not accepted¹ by the *Project Manager*.

Signed

Name

Position

Project Manager

Engineering Qualifications

Name of Organisation

National Highways

Date

2

Notes

- ¹ Delete as appropriate.
- ² CEng MICE, CEng MIStructE or equivalent

Construction Certificate

Name of Project A303 Amesbury to Berwick Down (Stonehenge)

Name of Design Package

Design Package Reference

1. We certify that (name of Design Package) and its equipment has been constructed, tested and commissioned in accordance with the accepted construction drawings, specifications and schedules listed within the corresponding Submission Certificate (insert Submission Certificate reference).

2. The execution of the works has been accurately translated into the Project Information Model.

Signed

Name

Position Contractor's Principal

Engineering Qualifications

1

Name of Organisation

Date

3. We certify that the works have been constructed in accordance with the accepted design.

Signed

Name

Position Designer's Principal

Engineering Qualifications

1

Name of Organisation

Date

4. This Construction Certificate is accepted \ accepted with comments \ not accepted.
(comments – if applicable)

2

Signed

Name

Position Project Manager

Engineering Qualifications

Name of Organisation

Date

Notes

1 Engineer with CEng MICE, CEng MStructE or equivalent.

2 Delete as appropriate

Construction Compliance Certificate

Project details:

Name of Project A303 Amesbury to Berwick Down (Stonehenge)

Element of the Works

Element Reference No.

Approval in Principle¹ dated (date) and addenda¹ (date):

Construction drawings (permanent and temporary works^{1,2}) and bar bending schedules listed within the design and check certificate / certificates¹ (date)³:

As constructed drawings³ and bar bending schedules³, the unique numbers of these drawings and schedules are:

Schedule of drawings/bending schedules

Document Number	Title	Revision	Date

The Specification for Highway Works (date), including additional and substituted clauses recorded in Certificates for specification variations^{1,3} (date):

Section 1

We certify that (name of element of the Works) and its equipment⁴:

1. Have been constructed, commissioned and tested¹ in accordance with:
 - a) The construction drawings and schedules listed within the above design and check certificate/certificates¹, with any modifications in accordance with the technical approval procedures given in CG 300 (date), ¹except (list exception(s) and give appropriate information and reason for non-compliance⁵).
 - b) The above Specification for Highway Works and specification variation, ¹except (list exception(s) and give appropriate information and reason for non-compliance⁵).
2. The execution of the works has been accurately translated into the Project Information Model.

Signed

Name

Position Contractor's Principal

Engineering Qualifications

6

Name of Organisation

Date

Signed

Name

Position Designer's Principal

7

Engineering Qualifications

Name of Organisation

Date

Section 2

We certify reasonable professional skill and care has been used, relating to the execution of (name of element of the Works), in the task described below (choose ⁸ either 1), 2) or 3):

- 1) ¹Examining the execution and that it has been constructed, commissioned and tested in accordance with:
 - a) the above Approval in Principle, Design and Check Certificate/Certificates¹, with any modifications in accordance with the technical approval procedures give in CG 300/(date), ¹ except (list exception(s) and give appropriate information and reason for non-compliance⁵)
 - b) The construction drawings and bar bending schedules listed within the Design and Check Certificate/Certificates¹ (date) ³, as modified by authorised variations accepted by the Overseeing Organisation, ¹ except (list exception(s) and give appropriate information and reason for non-compliance⁵).
- 2) ^{1,9} Hands off audit role assessment to ensure that the correct quality control procedures have been followed
- 3) ¹ (state task/role required under the contract's work specifications or if different, the actual task/role performed and give appropriate information and reason for non-compliance⁷)

Signed

Name Works Examiner's Principal

Position

6

Engineering Qualifications

7

Name of organisation

Date

3. This certificate is accepted by the TAA

Signed

Name

Position

Engineering Qualifications

6

TAA

Date

Notes

- ¹ Delete as appropriate.
- ² Temporary works are required where they may have significant effect on the permanent works.
- ³ A full list to be given including any addenda.
- ⁴ Certification for mechanical and electrical installations are not required as they are covered in Section 6 of CG 300. However all the maintenance and operation manuals, including guarantees, should be provided to the Overseeing Organisation.
- ⁵ Consider appropriate measure if required and advise the TAA if it needs to be recorded in the Overseeing Organisation's management system for structures.

- ⁶ Competent engineer with appropriate qualification and experience e.g. for Categories 0 and 1, and with CEng MICE, CEng MIStructE or equivalent for Categories 2 and 3. The acceptance of competency criteria may be varied subject to TAA agreement.
- ⁷ A principal of the *Contractor* or organisation responsible for the execution.
- ⁸ Options 2 & 3 allow for certification by independent parties to provide assurance on work elements. However Option 1 is a requirement for all projects.
- ⁹ A hands off audit role provides additional assurance for complex projects or procedures. Where required, this will be in addition to the works examiner.

Takeover Certificate

Name of Project A303 Amesbury to Berwick Down (Stonehenge)

Part of the works

Contractor's Statement

1. We certify that:
- we have done all the work which the Scope state is to be done before Completion of the part of the works described above and
- we have corrected notified Defects which would have prevented the Client from using the part of the works and others from doing their work.

Signed

Name

Position Contractor's Principal

Engineering Qualifications

Name of Organisation

Date

Operating Authority's Acceptance

2. I accept that this part of the works is ready for use by the Client or other body

1

Signed

Name

Position Project Manager

Engineering Qualifications

Name of Organisation

Date

Project Manager's Certificate

3. The date upon which the Client took over the part of the works described above is

Signed

Name

Position Project Manager

Engineering Qualifications

Name of Organisation

Date

Notes

- 1 Delete as appropriate

Annex 2 – Review Process Flow Charts

Figure 1: Category 1 & Category 2 Design Packages

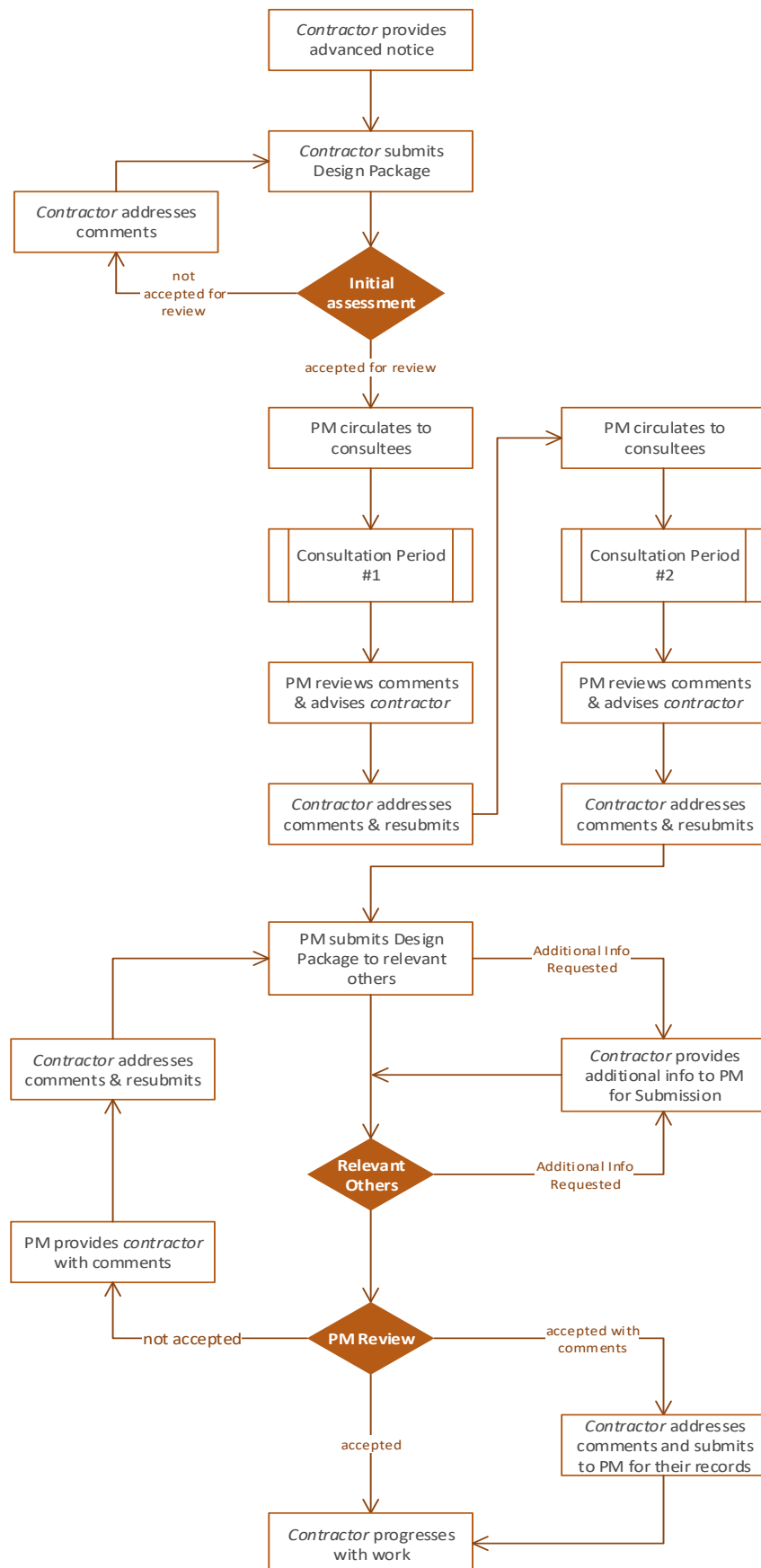


Figure 2: Category 3 Design Packages

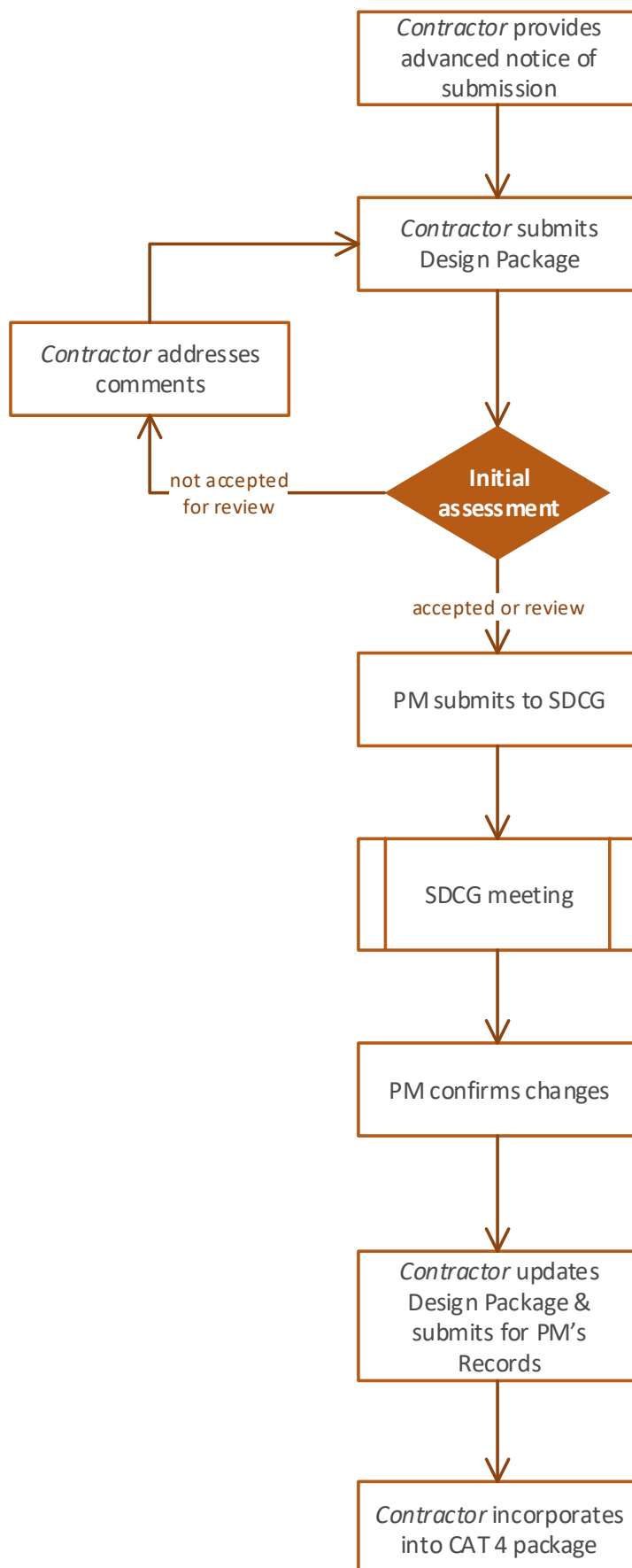


Figure 3: Category 4 Design Packages

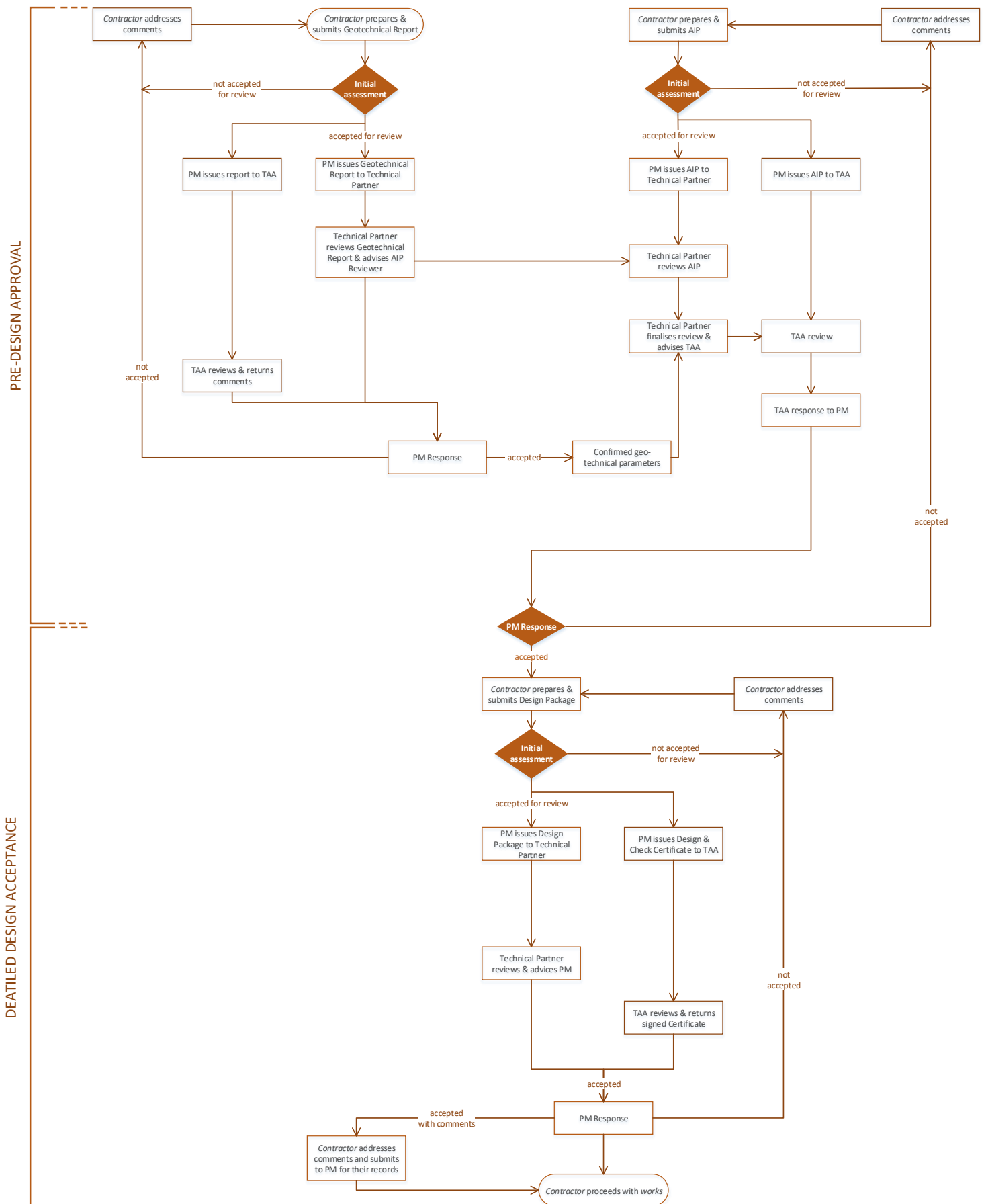


Figure 4: Category 5 Design Packages

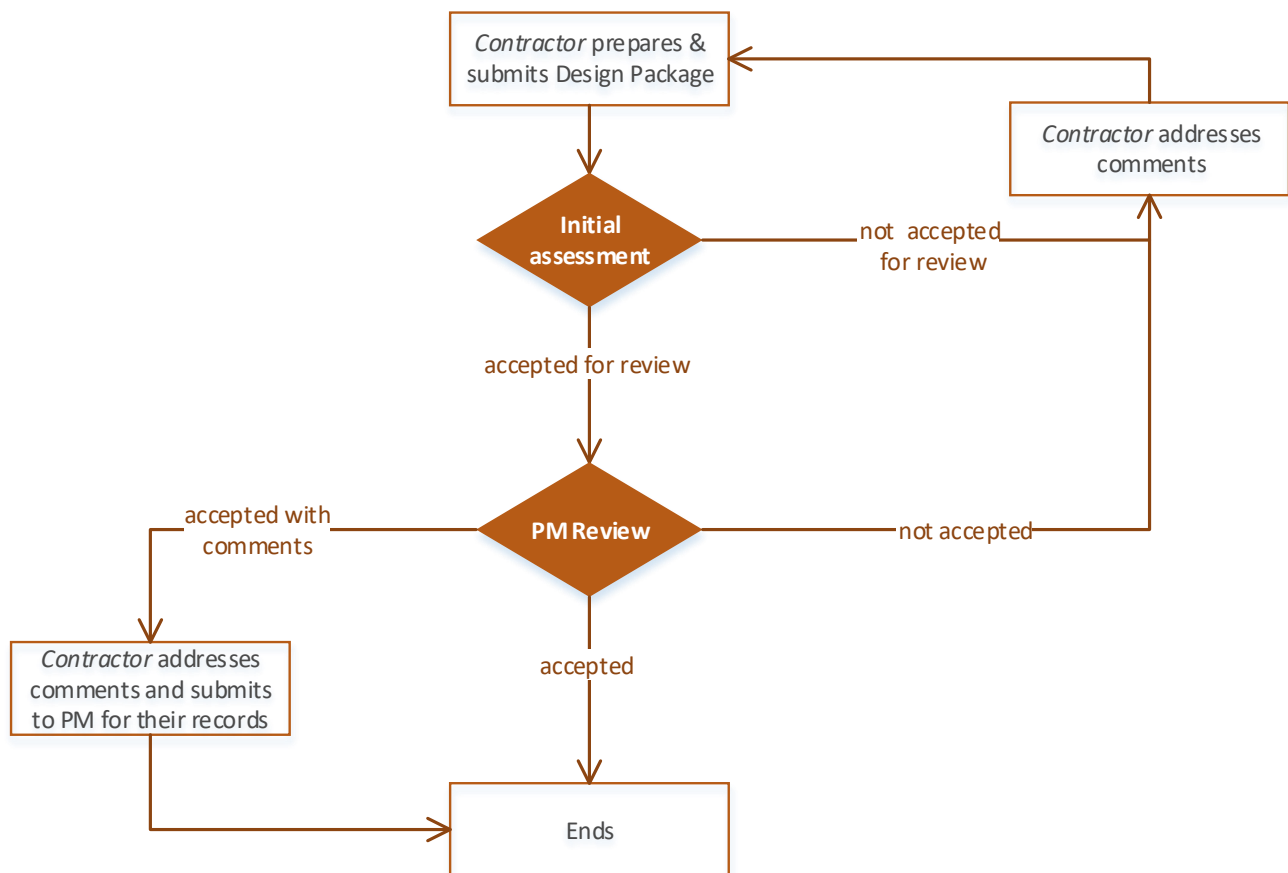
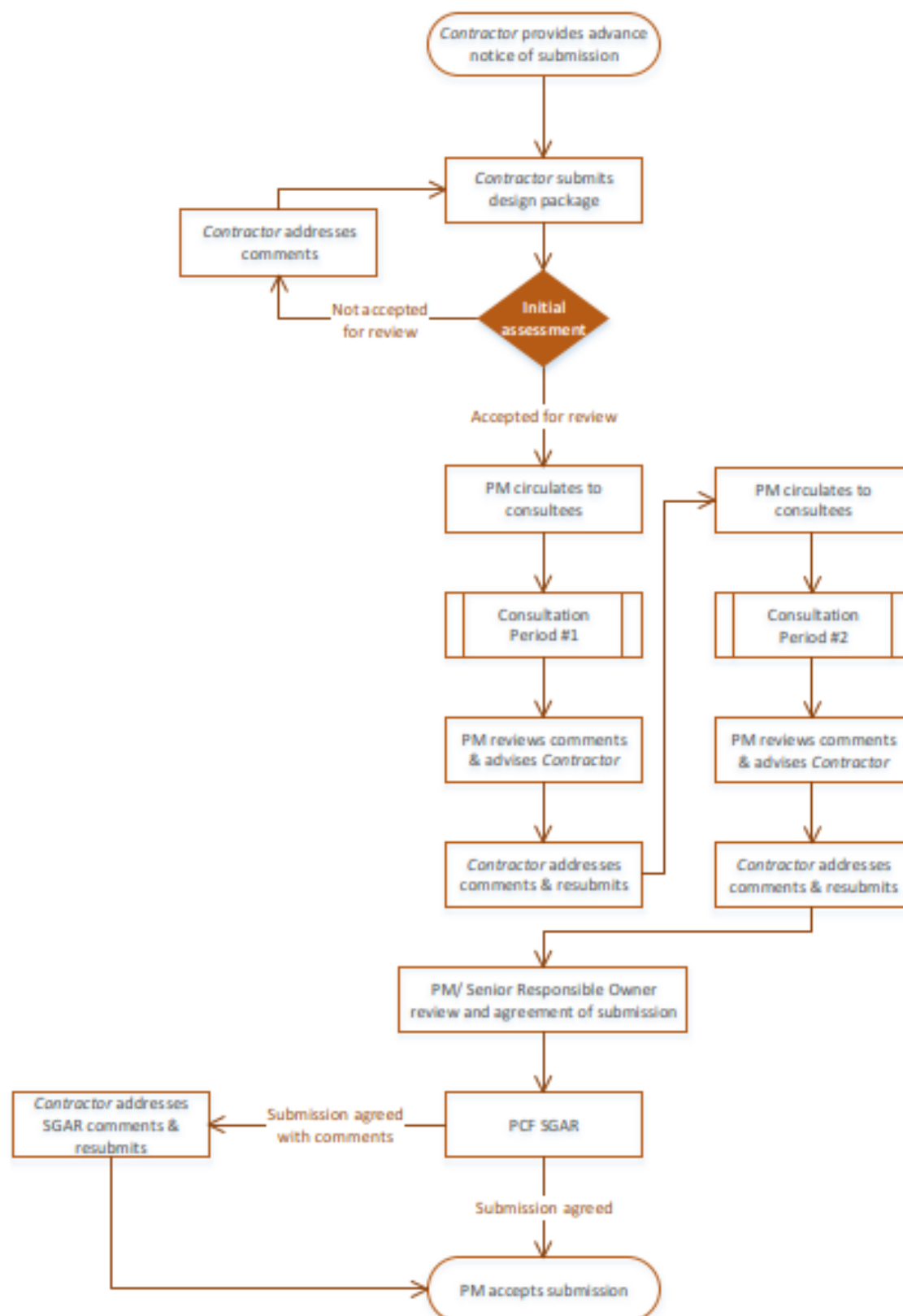


Figure 5: Category 6 Design Packages



Reference List

- [1] Highways England, "CG 300 Technical approval of highway structures".
- [2] Highways England, "CD 622 Managing geotechnical risk".
- [3] Highways England, "Design Manual for Roads and Bridges," [Online]. Available: <https://www.standardsforhighways.co.uk/dmr/b/>. [Accessed April 2020].
- [4] Highways England, "Manual of Contract Documents for Highway Works," [Online]. Available: <https://www.standardsforhighways.co.uk/ha/standards/mchw/index.htm>. [Accessed April 2020].
- [5] Highways England, "CG 502 The certification of drainage design".