

100mm @ A1 (50mm @ A3)

1

This drawing is to be read in conjunction with all relevant architects, engineers and specialists drawings and specifications.

2

Do not scale from this drawing in either paper or digital form. Use written dimensions only. To check drawing has been printed to the intended scale the above bar should be 100mm

Gym to be built on 15m x 18m rubber matt by Tiger Mulch or similar approved

Column Schedule

C1	70x70x5 SHS
C2	70 sq. solid knife steel post

Beam Schedule

B1	33.7x3.2 CHS
B2	48.3x3.2 CHS
B3	70mm sq solid knife steel
B4	33.7x4 CHS

Note:

Depth of strip footings dependent on ground conditions. TBC on site

P1	27.02.18	TJ	AC	Preliminary Issue
Rev	Date	By	Eng	Amendments

HEYNE  
TILLET  
STEEL

STRUCTURAL  
ENGINEERS

hts.uk.com

Job Name

Steel Warriors

Drawing Title

Proposed Gym Sections and  
Details Sheet 1

Purpose of Issue

Preliminary

Scale at A1

As Indicated

Drg No

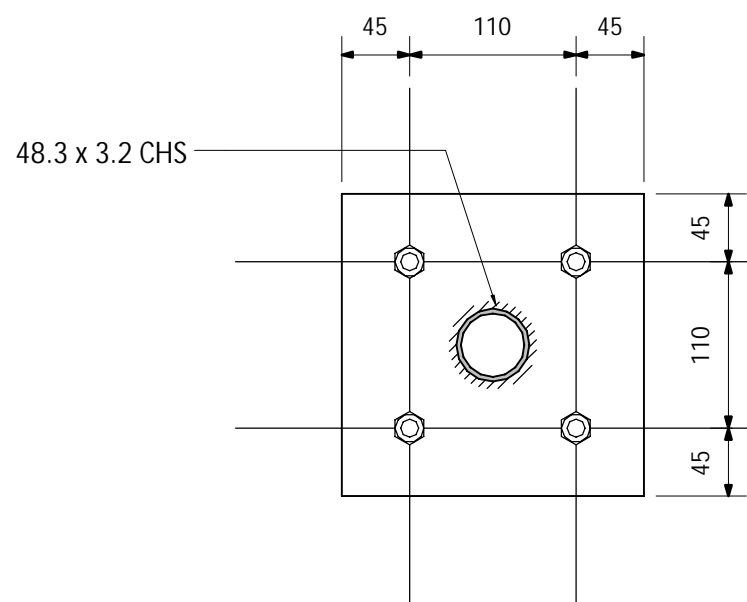
1632 / P105

Rev

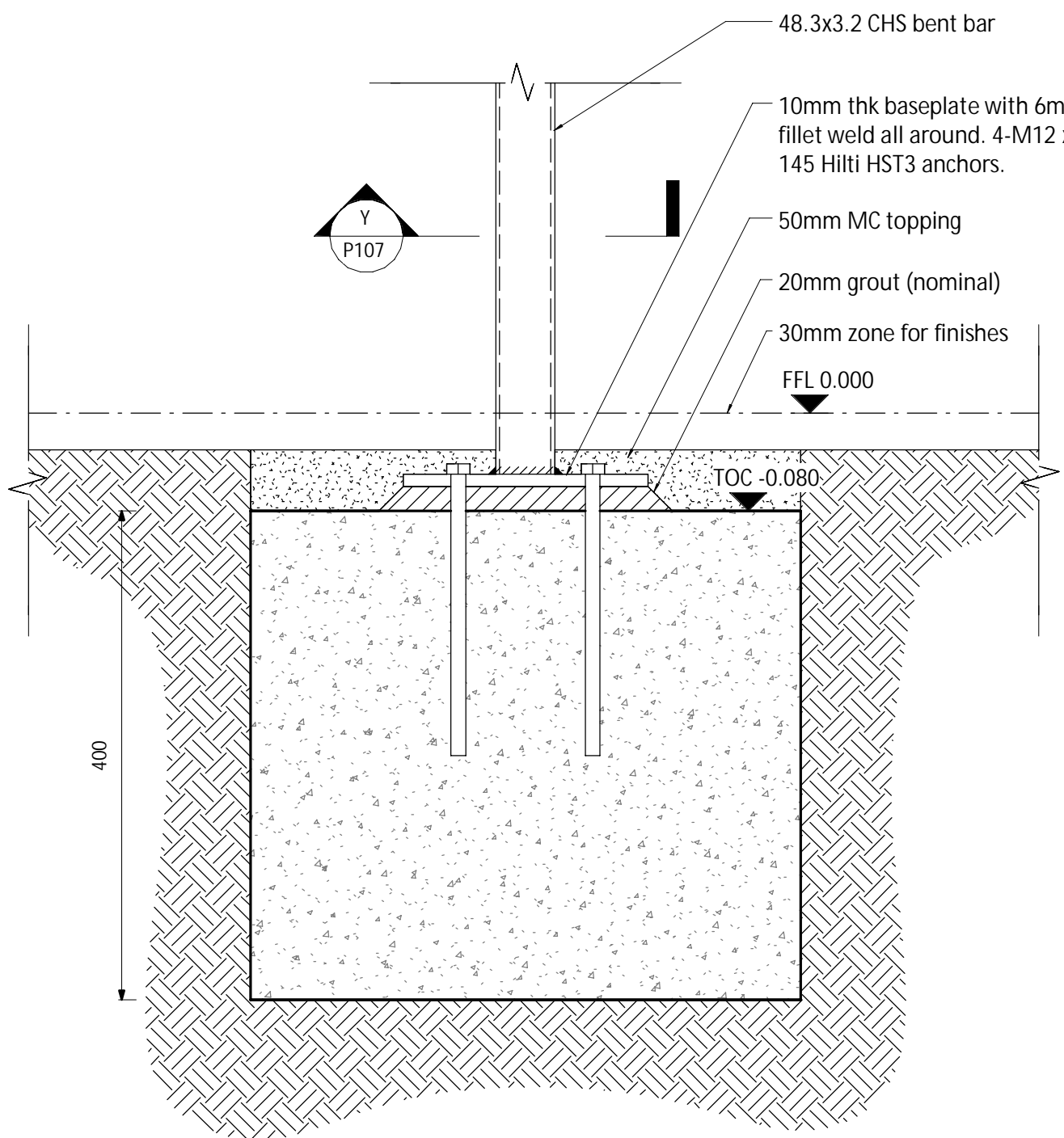
P1



Parallel Bars Structure



Detail Y-Y



Section 5

1 : 5

100mm @ A1 (50mm @ A3)

- This drawing is to be read in conjunction with all relevant architects, engineers and specialists drawings and specifications.
- Do not scale from this drawing in either paper or digital form. Use written dimensions only. To check drawing has been printed to the intended scale the above bar should be 100mm

Gym to be built on 15m x 18m rubber matt by Tiger Mulch or similar approved

#### Column Schedule

C1	70x70x5 SHS
C2	70 sq. solid knife steel post

#### Beam Schedule

B1	33.7x3.2 CHS
B2	48.3x3.2 CHS
B3	70mm sq solid knife steel
B4	33.7x4 CHS

Note:  
Depth of strip footings dependent on ground conditions.  
TBC on site

P1	27.02.18	TJ	AC	Preliminary Issue
Rev	Date	By	Eng	Amendments

HEYNE  
TILLET  
STEEL

STRUCTURAL  
ENGINEERS

hts.uk.com

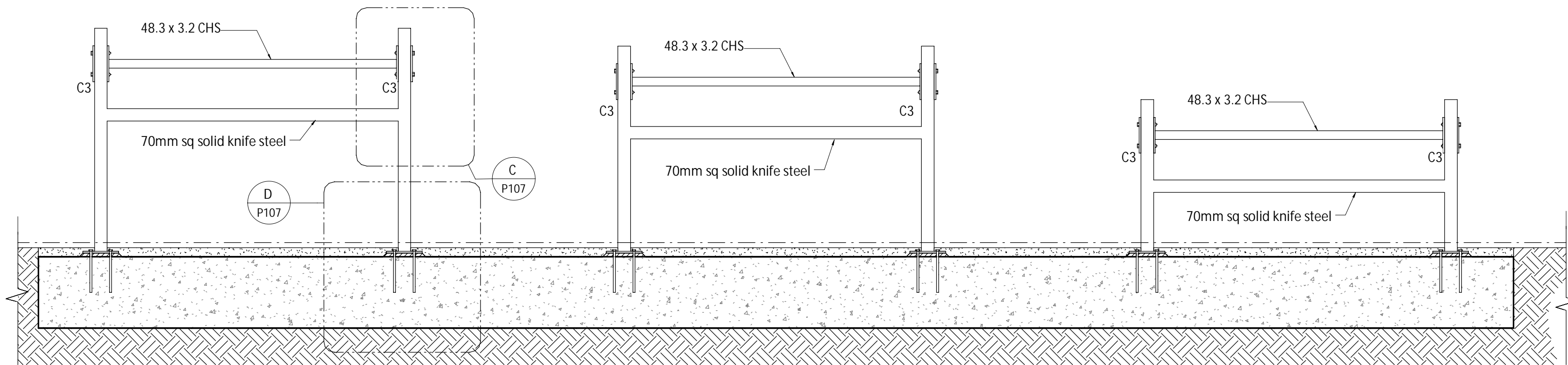
Job Name  
Steel Warriors

Drawing Title  
Proposed Gym Sections and  
Details Sheet 2

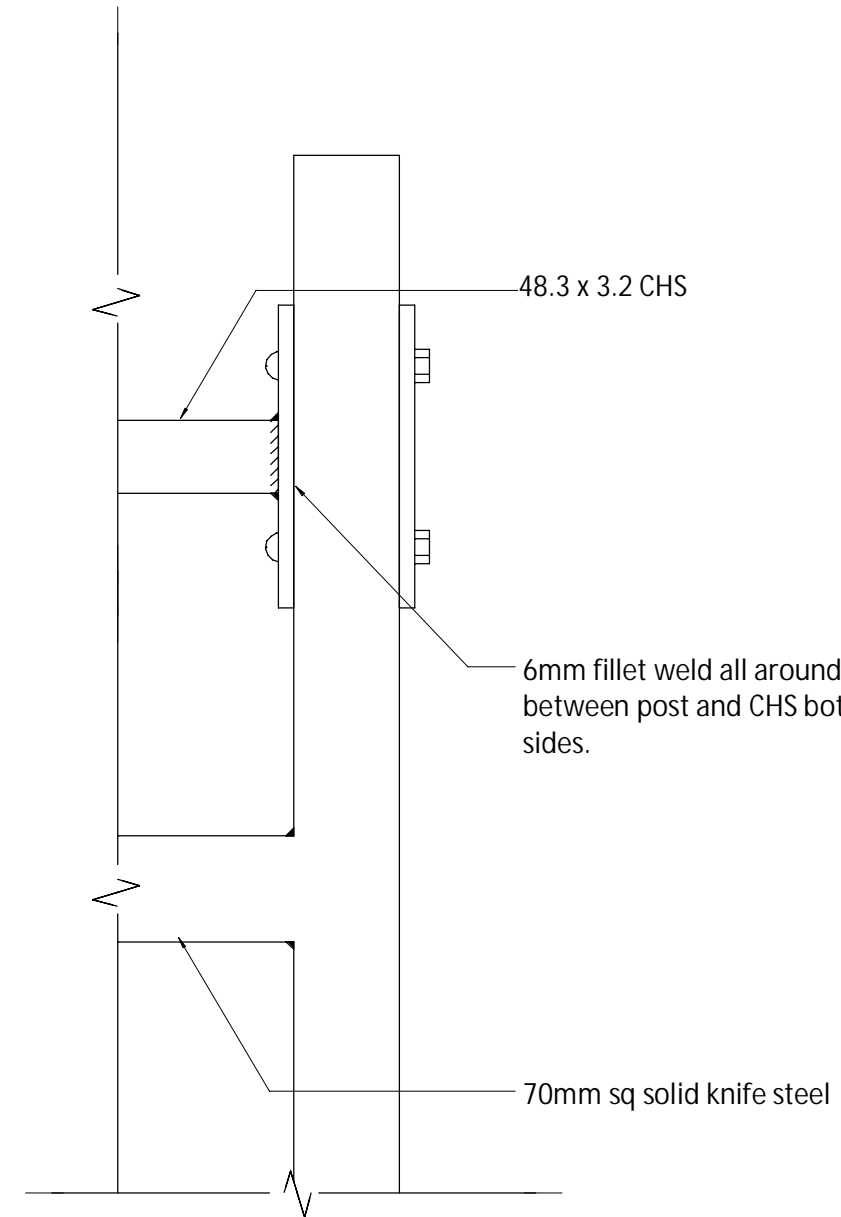
Purpose of Issue Preliminary Scale at A1 1 : 5

Drg No 1632 / P106 Rev P1

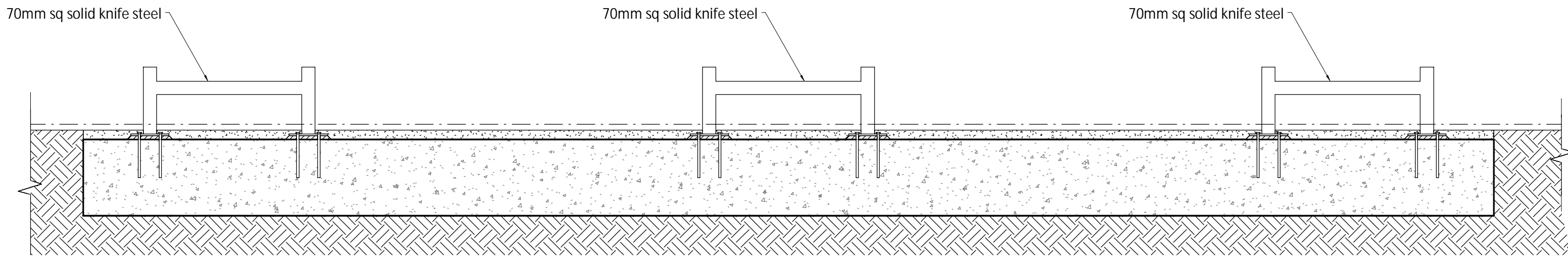




Section 3  
1 : 20

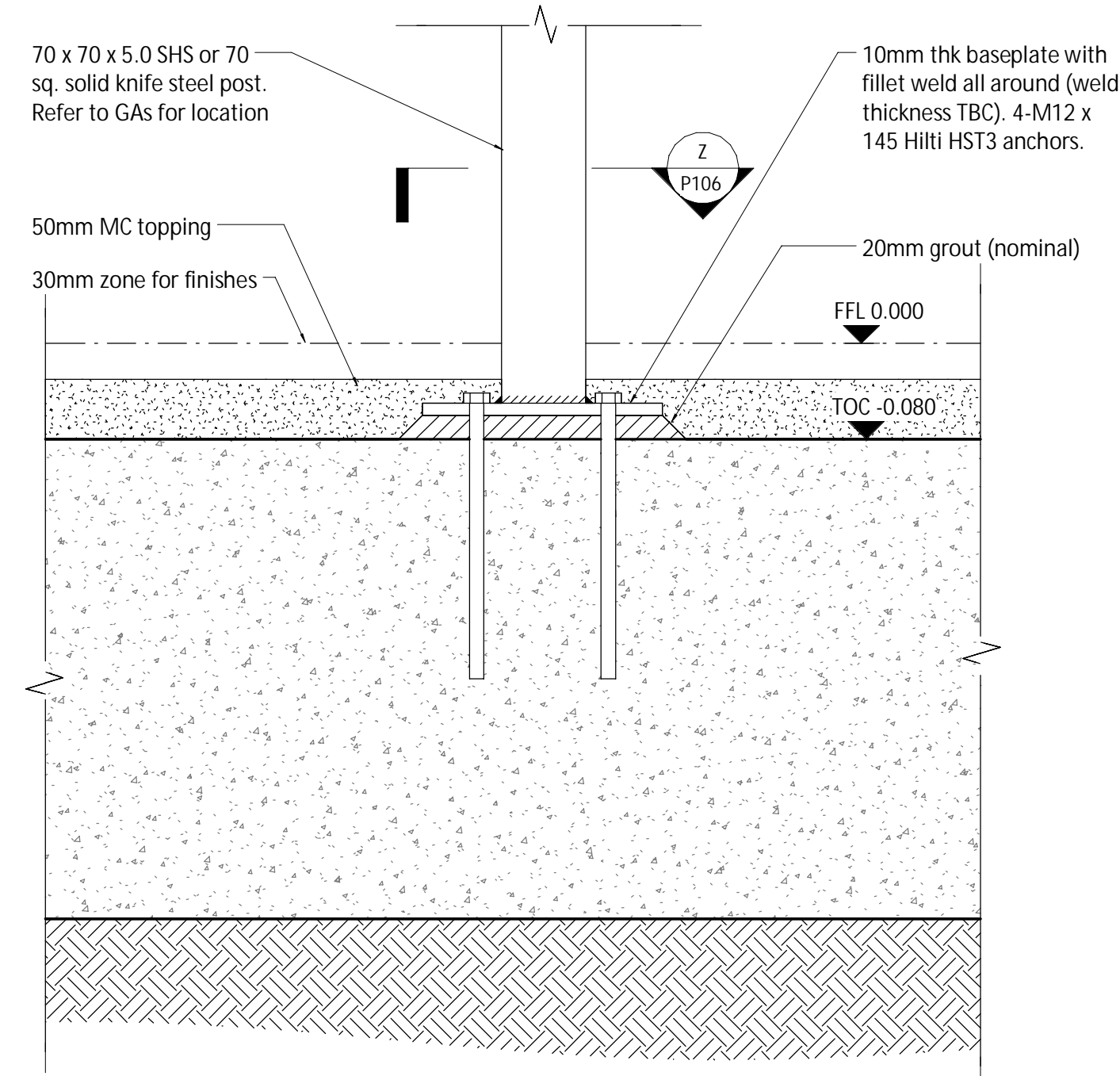


Detail C  
1 : 5

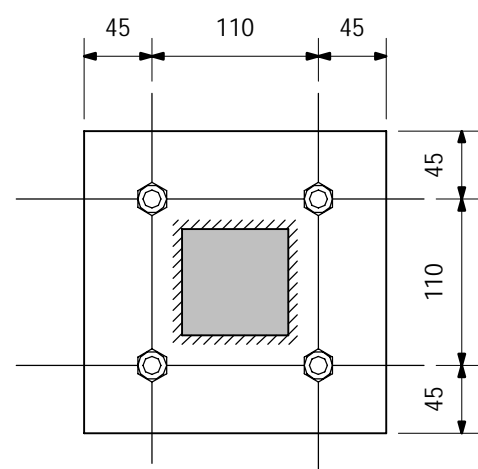


Section 4  
1 : 20

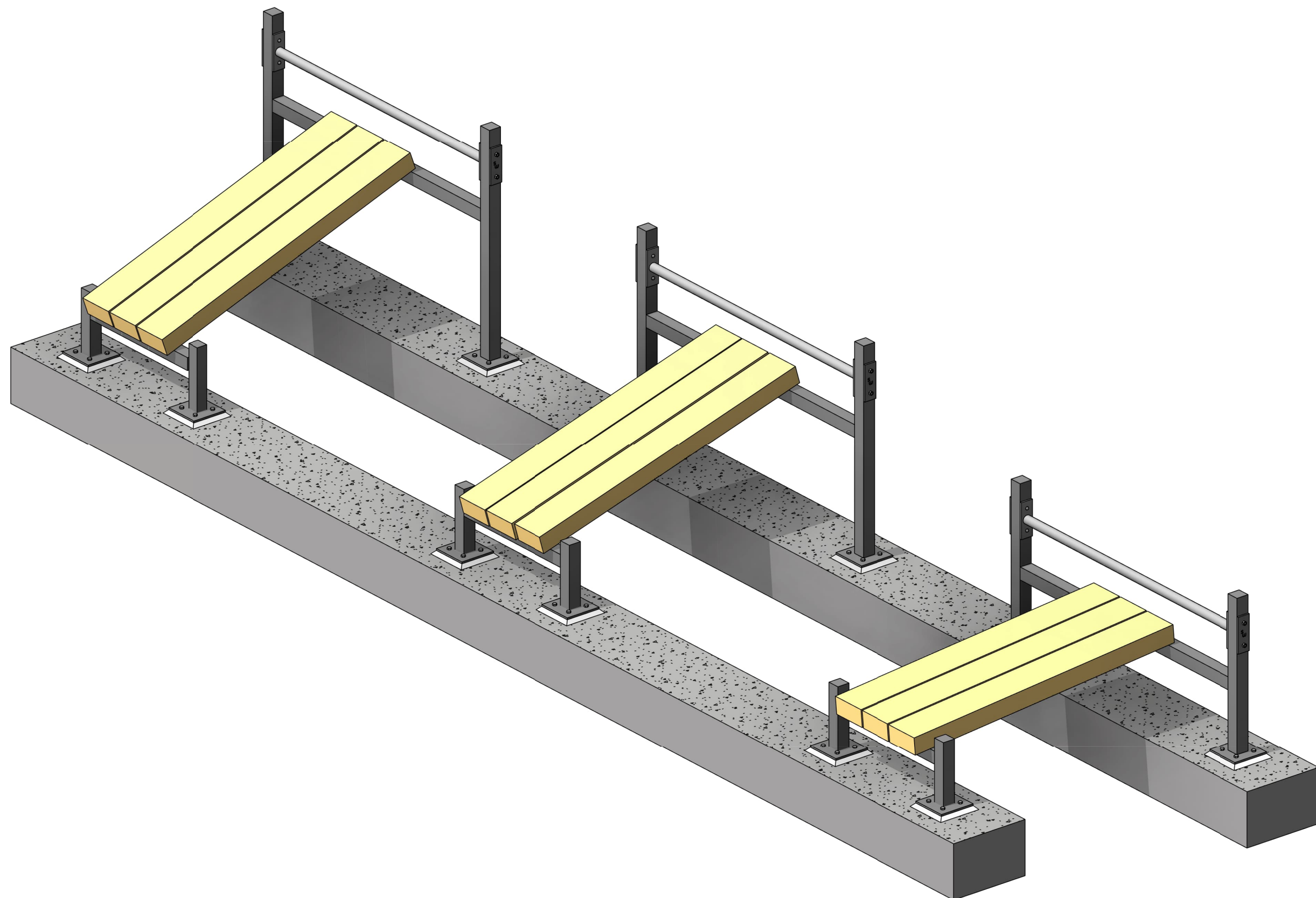
Note:  
See component drawings for knife steel H frames



Detail D  
1 : 5



Section Z-Z  
Note: Same baseplate detail for knife steel posts to all equipment



Stainless Steel Benches

100mm @ A1 (50mm @ A3)

1

This drawing is to be read in conjunction with all relevant architects, engineers and specialists drawings and specifications.

2

Do not scale from this drawing in either paper or digital form. Use written dimensions only. To check drawing has been printed to the intended scale the above bar should be 100mm

Gym to be built on 15m x 18m rubber matt by Tiger Mulch or similar approved

Column Schedule

C1	70x70x5 SHS
C2	70 sq. solid knife steel post

Beam Schedule

B1	33.7x3.2 CHS
B2	48.3x3.2 CHS
B3	70mm sq solid knife steel
B4	33.7x4 CHS

Note:  
Depth of strip footings dependent on ground conditions.  
TBC on site

P1	27.02.18	TJ	AC	Preliminary Issue
Rev	Date	By	Eng	Amendments

HEYNE  
TILLET  
STEEL

STRUCTURAL  
ENGINEERS

hts.uk.com

Job Name  
Steel Warriors

Drawing Title  
Proposed Gym Sections And  
Details Sheet 3

Purpose of Issue Preliminary      Scale at A1 As Indicated

Drg No 1632 / P107      Rev P1

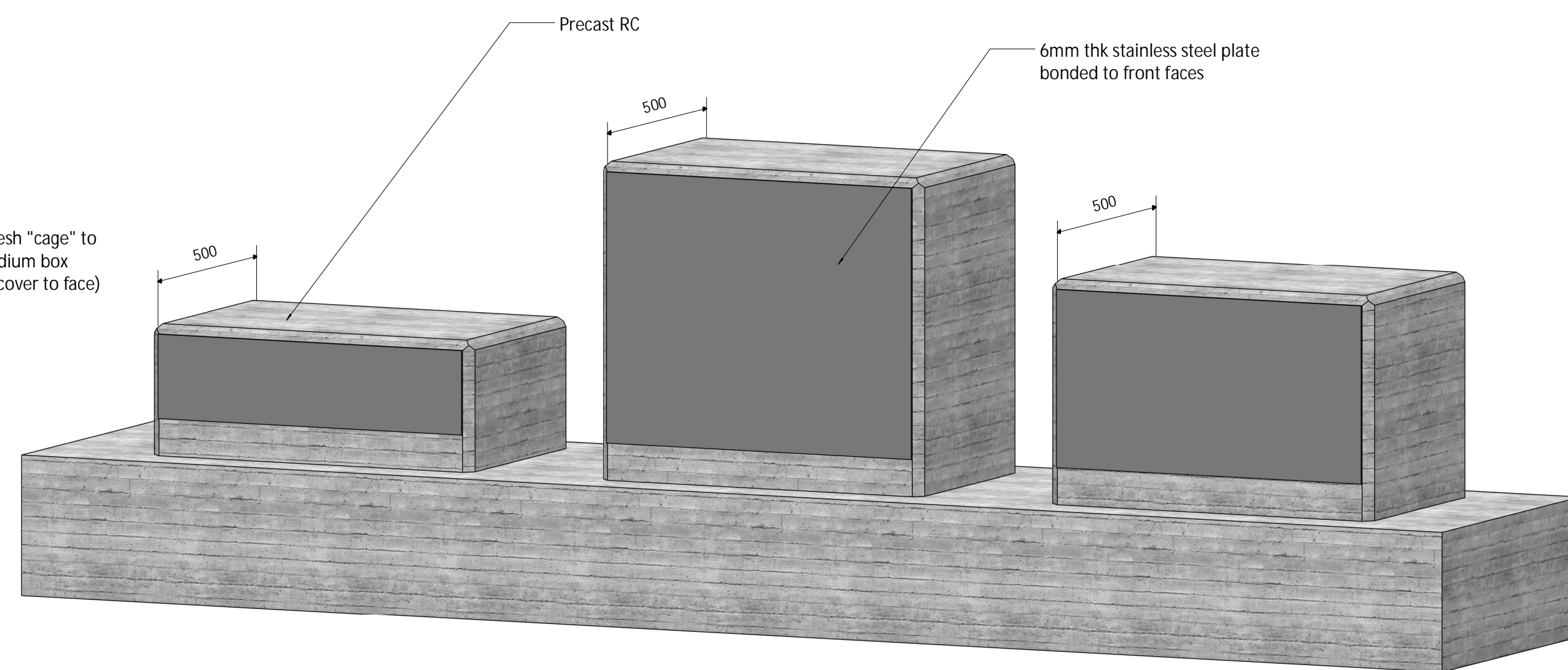
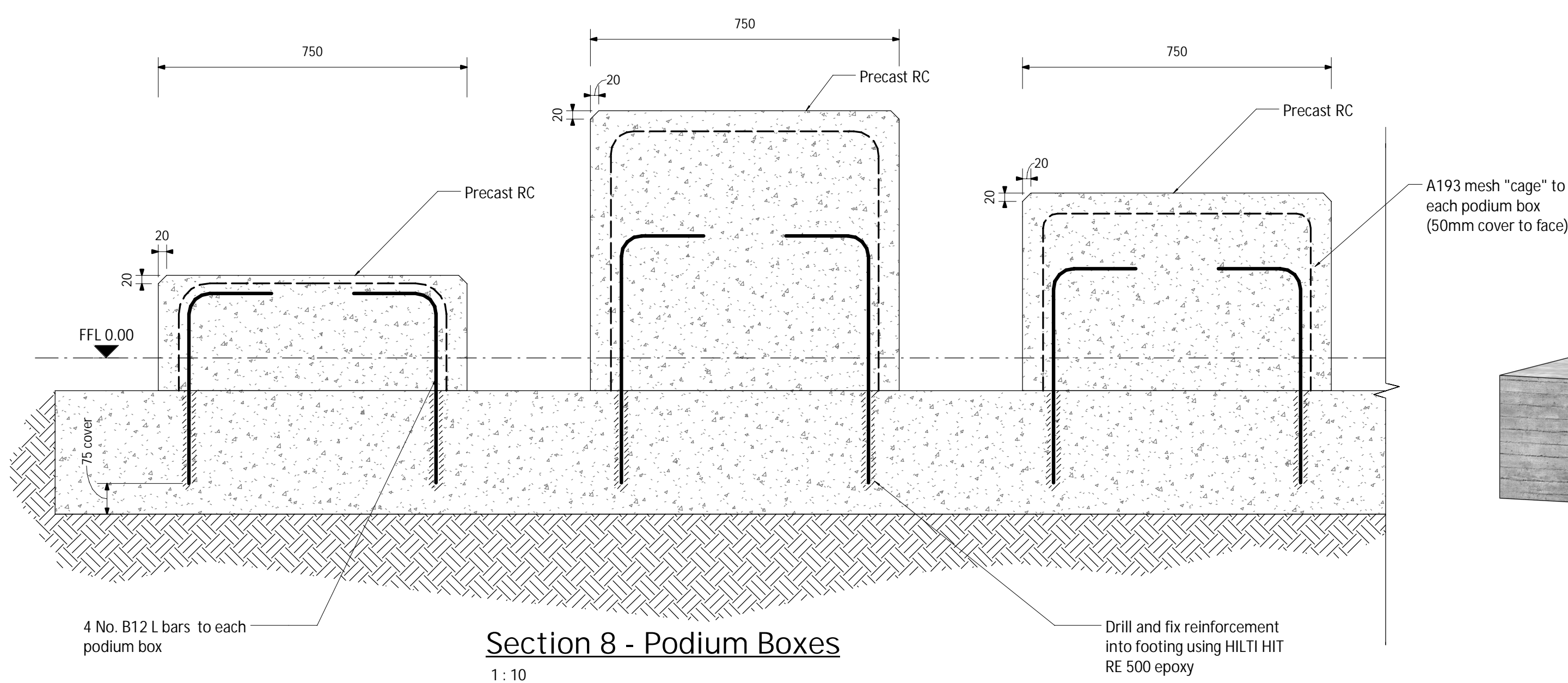
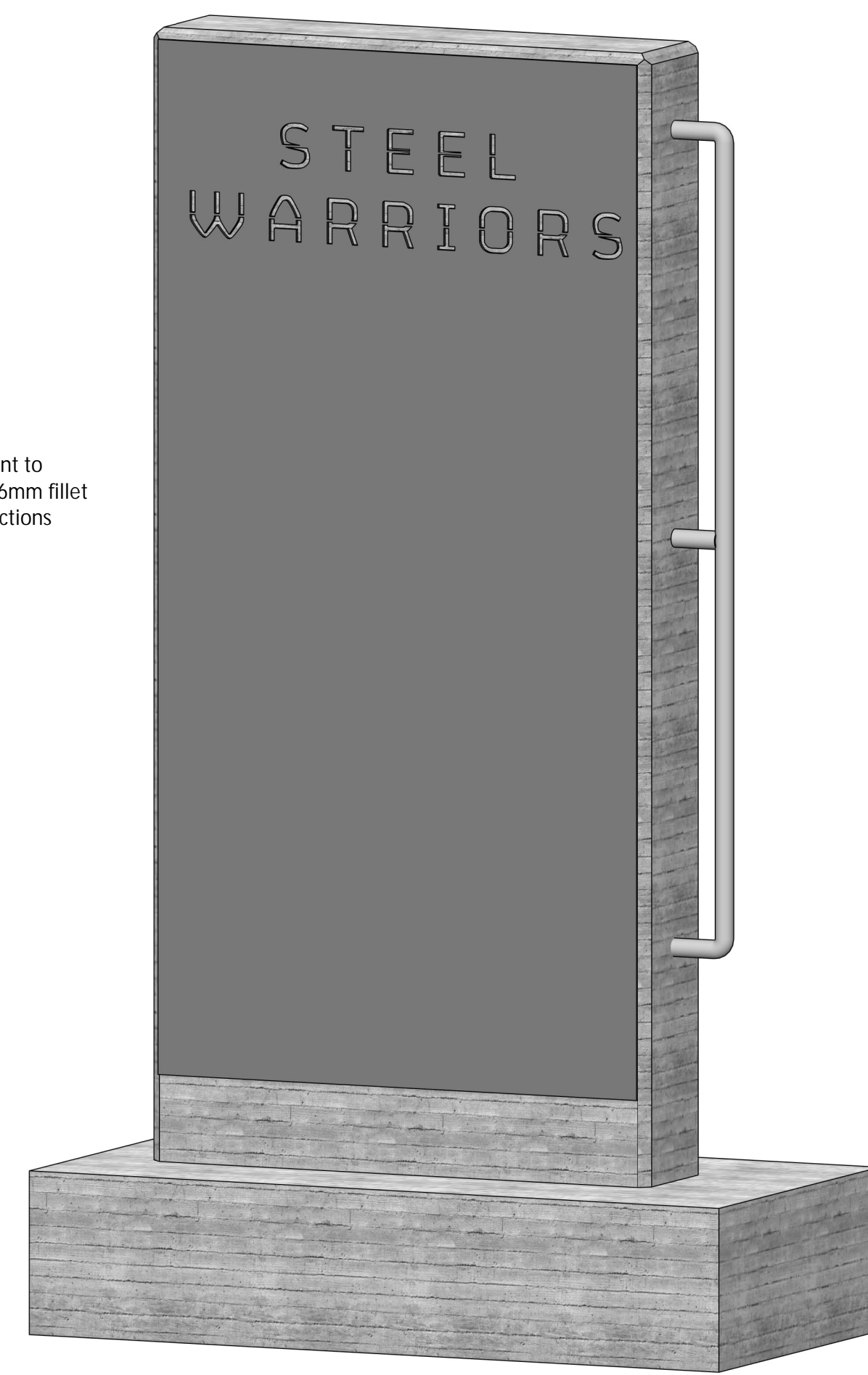
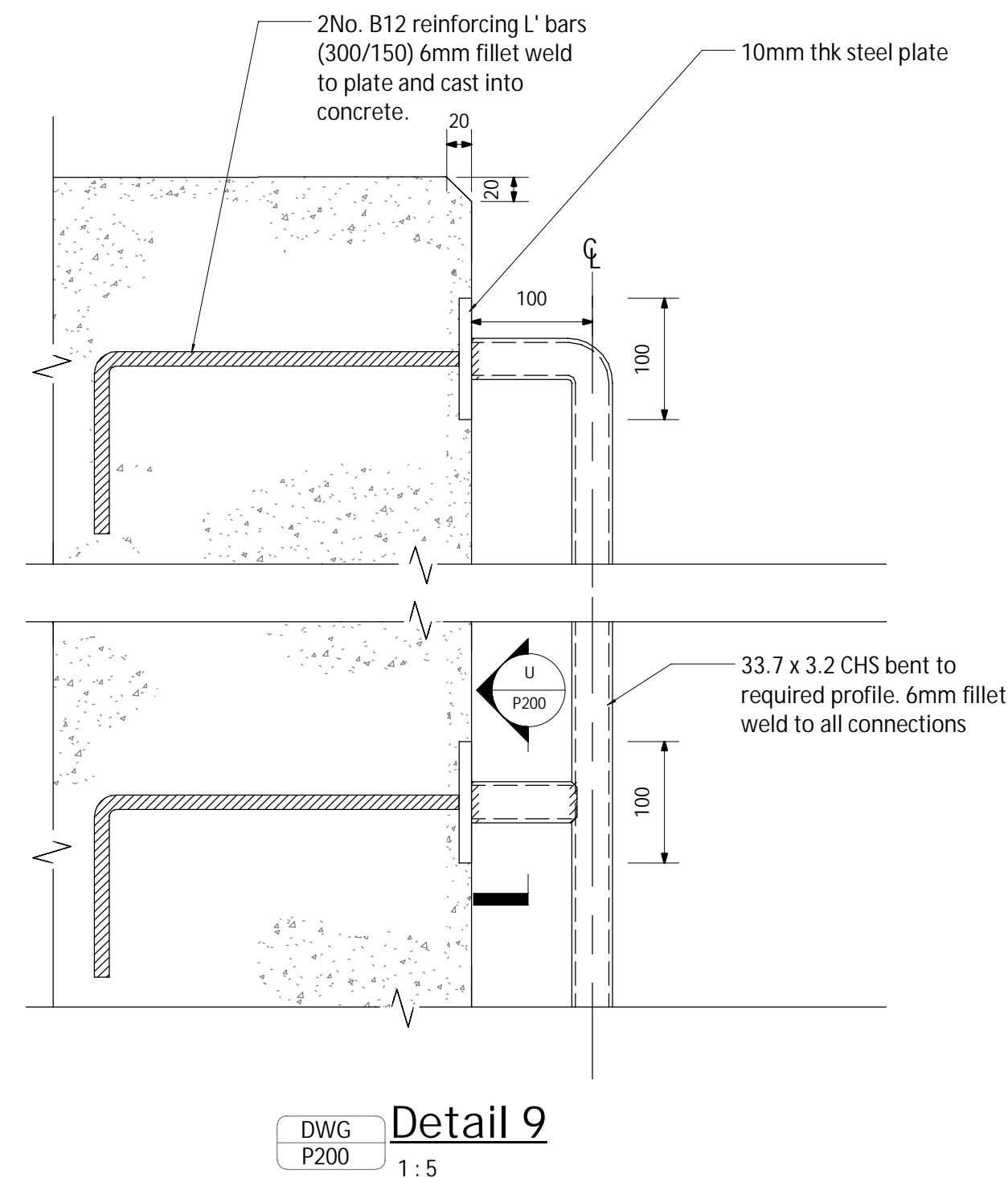
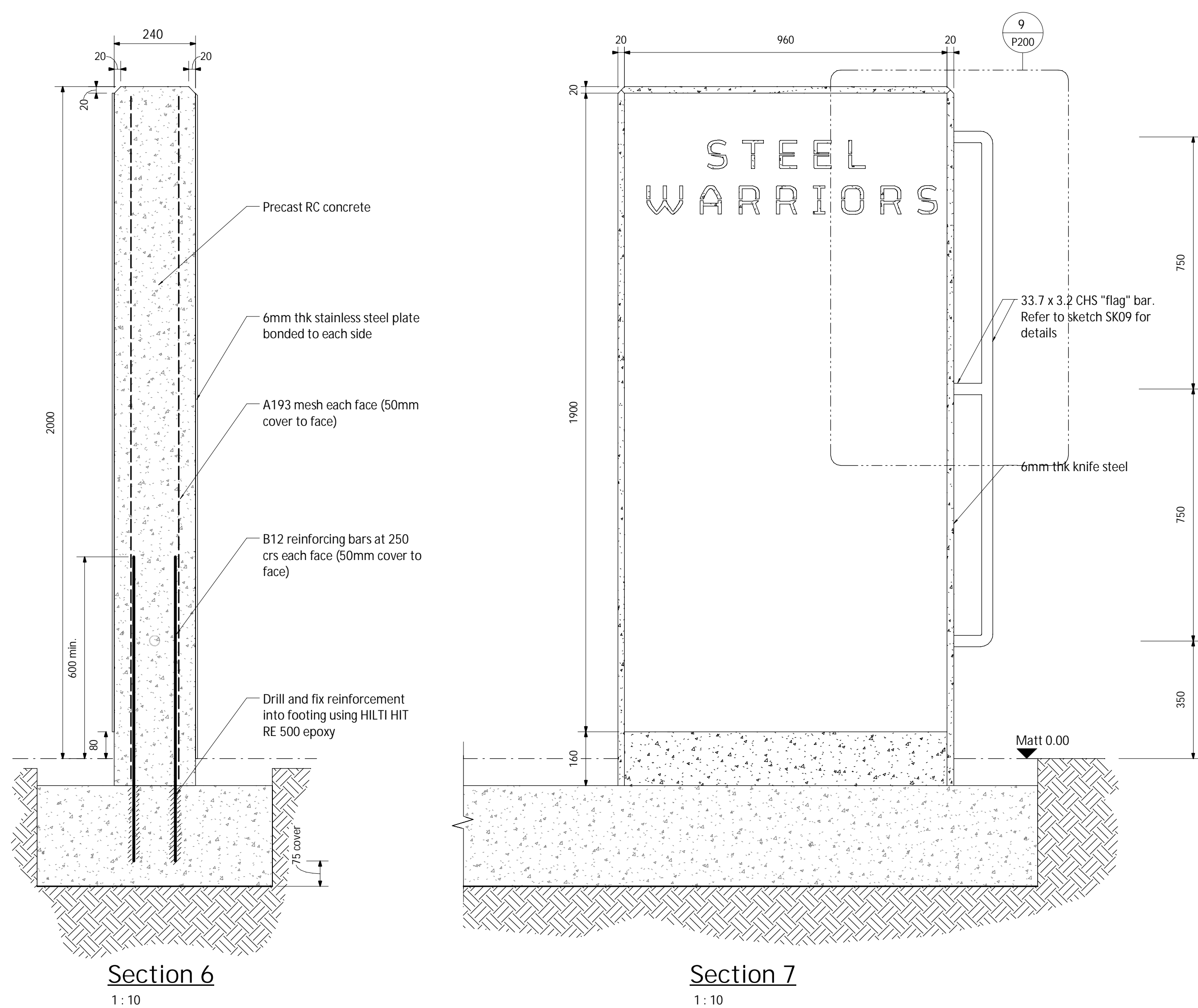


- 1 This drawing is to be read in conjunction with all relevant architects, engineers and specialists drawings and specifications.
- 2 Do not scale from this drawing in either paper or digital form. Use written dimensions only. To check drawing has been printed to the intended scale the above bar should be 100mm

Gym to be built on 15m x 18m rubber matt by Tiger Mulch or similar approved

**Note:**  
Depth of strip footings dependent on ground conditions.  
TBC on site

**Note:**  
Concrete sign and podium boxes to have 20mm chamfer on all corners.



C1	21.10.19	TJ	SC	Construction Issue
Rev	Date	By	Eng	Amendments

**HEYNE  
TILLET  
STEEL**

**STRUCTURAL  
ENGINEERS**

hts.uk.com

Job Name  
**Steel Warriors**

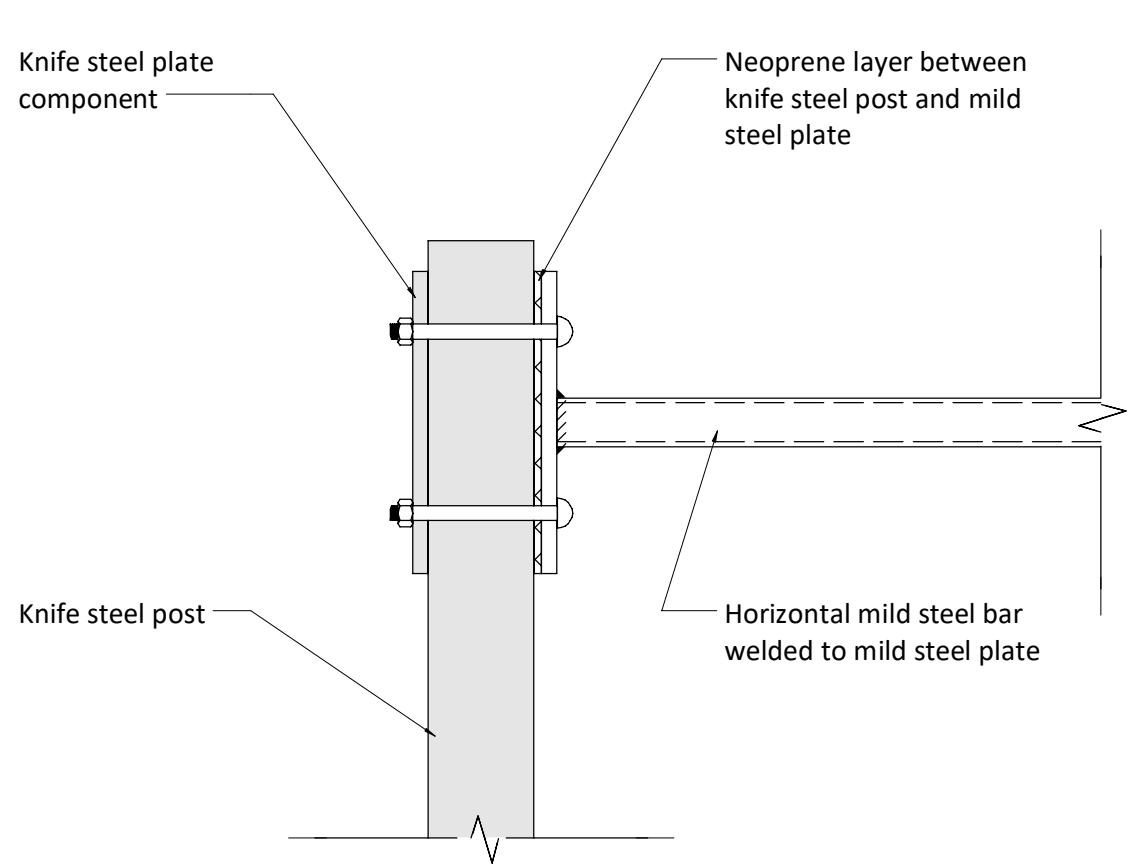
Drawing Title  
**Proposed Signage & Podium  
Box Details**

Purpose of Issue: **Construction** Scale at A1 **As Indicated**

Drg No **1632 / P200**

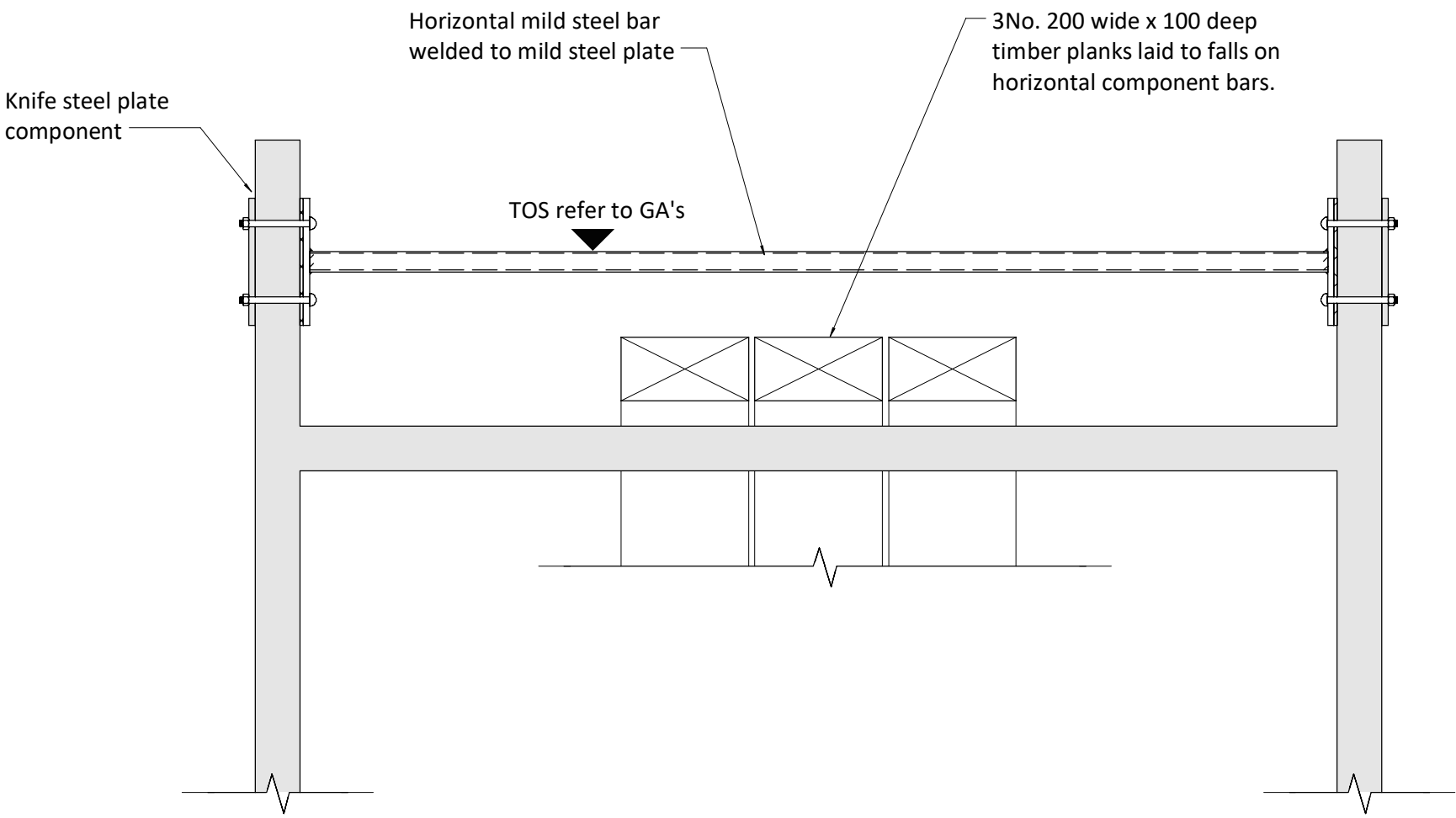
Rev **C1**





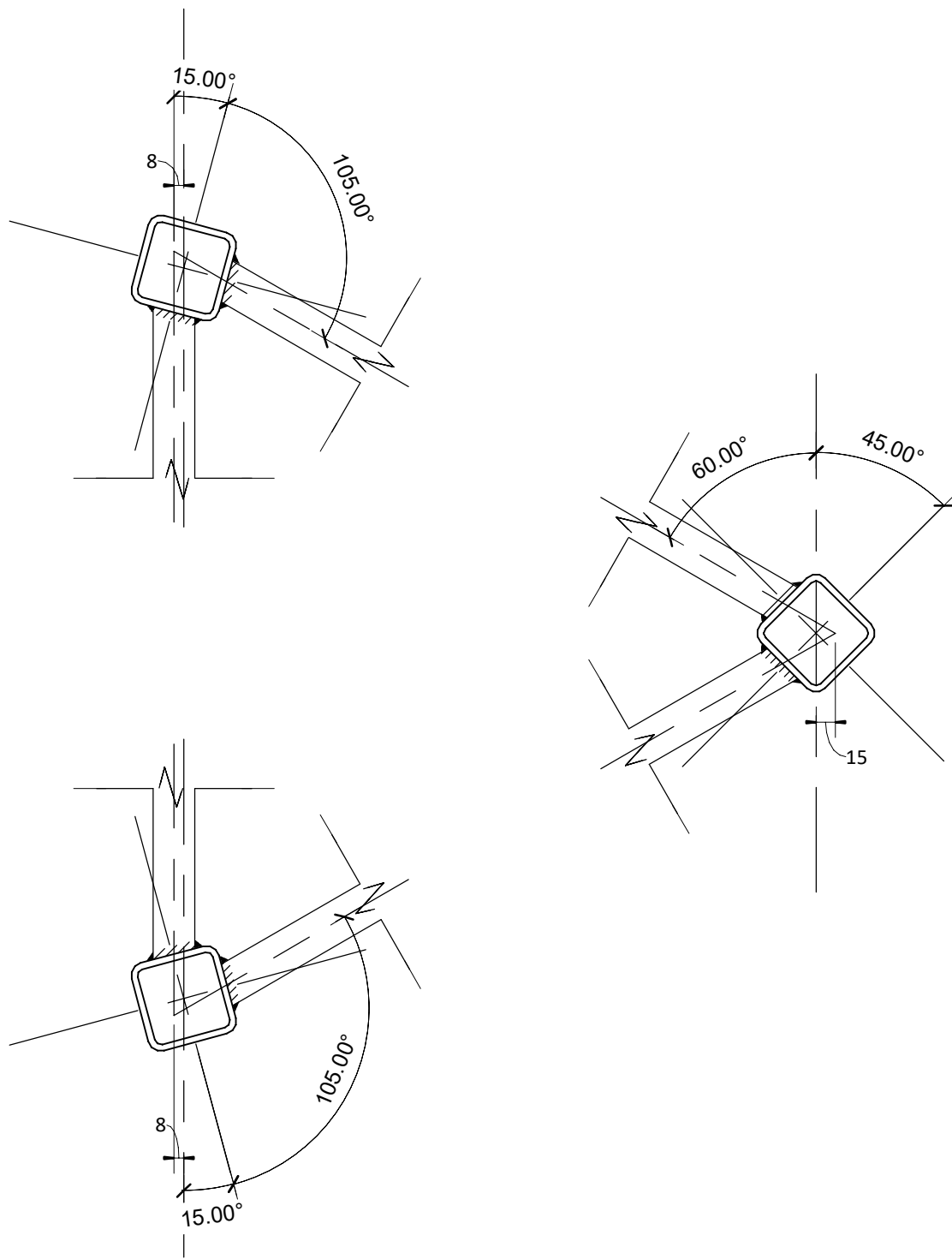
Typical Knife Plate Fixing Detail

1 : 5



Typical Knife steel H-bar Detail

1 : 10



Triangular Frame Corner Post Setting Out

1 : 5

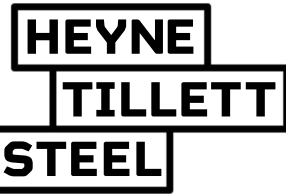
- 1 This drawing is to be read in conjunction with all relevant architects, engineers and specialists drawings and specifications.
- 2 Do not scale from this drawing in either paper or digital form. Use written dimensions only. To check drawing has been printed to the intended scale the above bar should be 100mm
- 3 Add notes

Work In Progress

Date / Time Printed - 09/03/2023 10:25:20

This is not a formal drawing issue and as such may contain un-coordinated or incomplete information. Full drawing issue to follow

P1	NYI	TJ	SC	Preliminary Issue
Rev	Date	By	Eng	Amendments



STRUCTURAL  
ENGINEERS

hts.uk.com

Job Name  
Steel Warriors

Drawing Title  
Typical Gym Sections and  
Details

Purpose of Issue Preliminary Scale at A1 As indicated

Drg No 1632 / P300 Rev P1