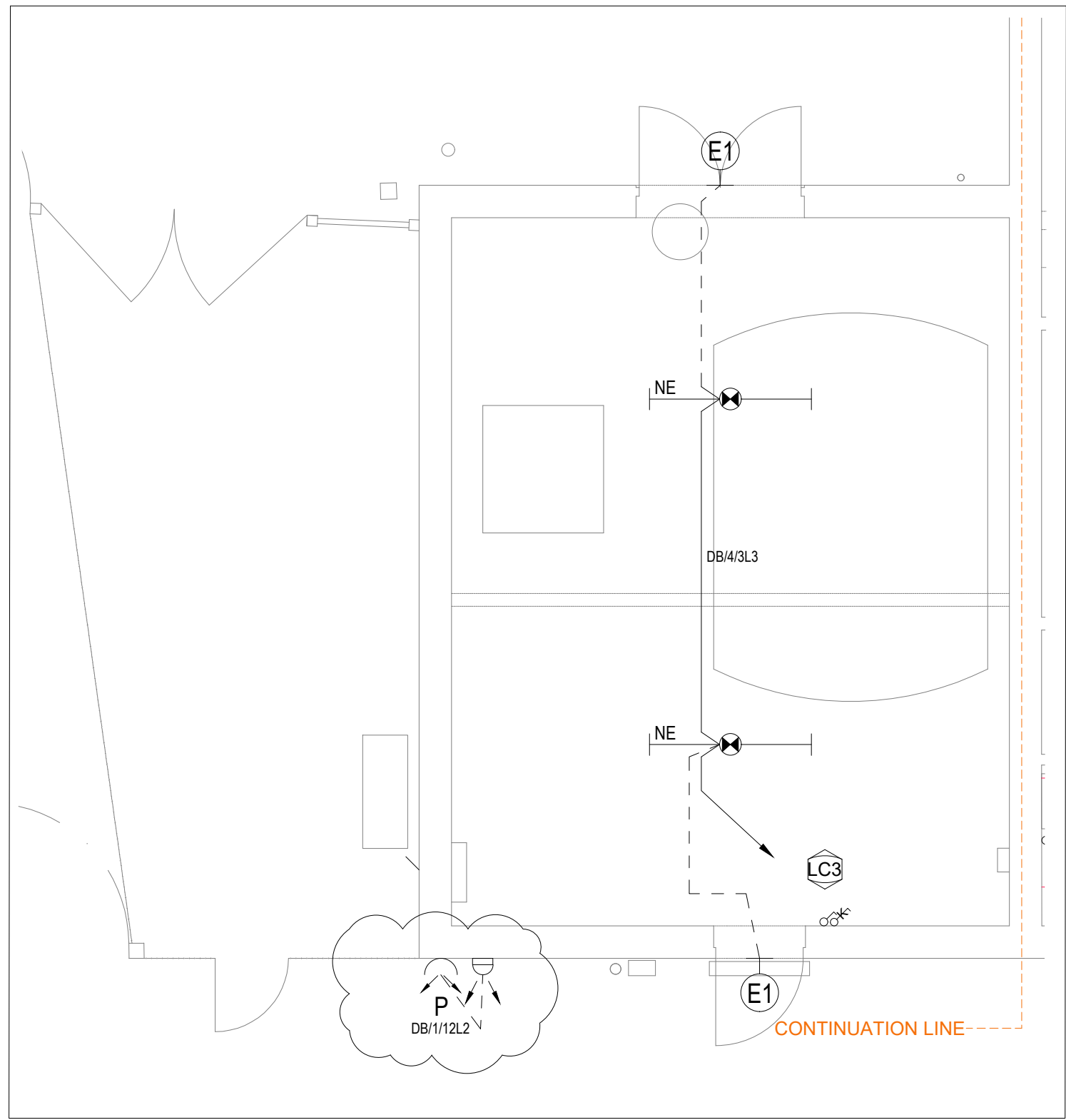


- DRAWING SPECIFIC NOTES:**
- THIS DRAWING IS TO BE READ IN CONJUNCTION WITH THE ELECTRICAL ENGINEERING SERVICES SPECIFICATION
  - LIGHTING CONTROL DETECTION DEVICES TO BE LINKED TO CONTROL THE AREA INDICATED.
  - FUSED CONNECTION UNIT AT HIGH LEVEL FOR LIGHTING CONTROL MODULE.
  - EXTERNAL LIGHTING CONTROLLED VIA TIME SWITCH, PHOTOCELL & CONTACTOR ARRANGEMENT LOCATED ADJACENT TO THE DISTRIBUTION BOARD. PROVIDE OVERRIDE SWITCH WITHIN NEW RECEPTION OFFICE.
  - REFER TO DRAWING E02 FOR DISTRIBUTION BOARD SCHEDULES.



LUMINAIRE LEGEND				
REF	DESCRIPTION	CONTROL GEAR	LAMPS	MANUFACTURER / REFERENCE
A	RECESSED CIRCULAR LED DOWNLIGHT LUMINAIRE WITH DIE CAST ALUMINIUM BODY, MATT FINISH REFLECTOR AND CLEAR IP65 POLYCARBONATE COVER.	REMOTE DRIVER	12W LED (4000°K)	LUCECO LIGHTING / PLATINUM MINI DOWNLIGHT / LDP15W11MS40 + LDP15BWHIP-01
B	RECESSED CIRCULAR LED DOWNLIGHT LUMINAIRE WITH DIE CAST ALUMINIUM BODY, MATT FINISH REFLECTOR AND CLEAR IP65 POLYCARBONATE COVER.	REMOTE DRIVER	8W LED (4000°K)	LUCECO LIGHTING / PLATINUM MINI DOWNLIGHT / LDP15W11MS40 + LDP15BWHIP-01
BE	RECESSED CIRCULAR LED DOWNLIGHT LUMINAIRE WITH DIE CAST ALUMINIUM BODY, MATT FINISH REFLECTOR AND CLEAR IP65 POLYCARBONATE COVER c/w INTEGRAL EMERGENCY 3 HOUR DURATION BATTERIES.	REMOTE DRIVER/ EMERGENCY VERSION	8W LED (4000°K)	LUCECO LIGHTING / PLATINUM MINI DOWNLIGHT / LDP15W11MS40 + LDP15BWHIP + LED3EP80
C	RECESSED CIRCULAR LED DOWNLIGHT LUMINAIRE WITH DIE CAST ALUMINIUM BODY, MATT FINISH REFLECTOR AND FROSTED IP65 POLYCARBONATE COVER.	REMOTE DRIVER	13W LED (4000°K)	LUCECO LIGHTING / PLATINUM DOWNLIGHT / LDP20W12MS40 + LDP20BWHIPF
CE	RECESSED CIRCULAR LED DOWNLIGHT LUMINAIRE WITH DIE CAST ALUMINIUM BODY, MATT FINISH REFLECTOR AND FROSTED IP65 POLYCARBONATE COVER c/w INTEGRAL EMERGENCY 3 HOUR DURATION BATTERIES.	REMOTE DRIVER/ EMERGENCY VERSION	13W LED (4000°K)	LUCECO LIGHTING / PLATINUM DOWNLIGHT / LDP20W12MS40 + LDP20BWHIPF
D	RECESSED CIRCULAR LED DOWNLIGHT LUMINAIRE WITH DIE CAST ALUMINIUM BODY, MATT FINISH REFLECTOR AND FROSTED IP65 POLYCARBONATE COVER.	REMOTE DRIVER	9.5W LED (4000°K)	LUCECO LIGHTING / PLATINUM DOWNLIGHT / LDP20W12MS40 + LDP20BWHIPF
DE	RECESSED CIRCULAR LED DOWNLIGHT LUMINAIRE WITH DIE CAST ALUMINIUM BODY, MATT FINISH REFLECTOR AND FROSTED IP65 POLYCARBONATE COVER c/w INTEGRAL EMERGENCY 3 HOUR DURATION BATTERIES.	REMOTE DRIVER/ EMERGENCY VERSION	9.5W LED (4000°K)	LUCECO LIGHTING / PLATINUM DOWNLIGHT / LDP20W12MS40 + LDP20BWHIPF + LED3EP80
E	SUFFIX E DENOTES EMERGENCY VERSION			
F	SURFACE MOUNTED 1500mm IP65 RATED LINEAR LED LUMINAIRE.	INTEGRAL DRIVER	27W LED (4000°K)	LUCECO LIGHTING / CLIMATE EXTRA / LCL15039840
FE	SURFACE MOUNTED 1500mm IP65 RATED LINEAR LED LUMINAIRE c/w INTEGRAL EMERGENCY 3 HOUR DURATION BATTERIES.	INTEGRAL DRIVER/ EMERGENCY VERSION	27W LED (4000°K)	LUCECO LIGHTING / CLIMATE EXTRA / LCL15039840
F1	SURFACE MOUNTED 1500mm IP65 RATED LINEAR LED LUMINAIRE c/w INTEGRAL LIGHTING CONTROL DEVICE.	INTEGRAL DRIVER	27W LED (4000°K)	LUCECO LIGHTING / CLIMATE EXTRA / LCL15039840
G	SURFACE MOUNTED 1200mm IP65 RATED LINEAR LED LUMINAIRE.	INTEGRAL DRIVER	16W LED (4000°K)	LUCECO LIGHTING / CLIMATE EXTRA / LCL12023240
GE	SURFACE MOUNTED 1200mm IP65 RATED LINEAR LED LUMINAIRE c/w INTEGRAL EMERGENCY 3 HOUR DURATION BATTERIES.	INTEGRAL DRIVER/ EMERGENCY VERSION	16W LED (4000°K)	LUCECO LIGHTING / CLIMATE EXTRA / LCL12023240
H	1800mm RECESSED IP65 RATED LED STRIP LIGHT WITHIN RECESSED ALUMINIUM EXTRUSION c/w OPAL COVER, END CAP SET AND DRIVER.	REMOTE DRIVER	15Wm LED (4000°K)	TRYKA LED / AR240940423 + PR03200 + PR03203 + PR03200 + HL-G-45-24 - QUOTATION REF: 0000023984
J	RECESSED IP65 RATED MODULAR LED PANEL LUMINAIRE WITH TP6 RATED DIFFUSER, UGR19 COMPLIANT AND SWITCHABLE OUTPUT. SET TO 14W	REMOTE DRIVER	14W LED (4000°K)	LUCECO LIGHTING / LUXPANEL EXTRA / LBP65M540 + LED3EP80
JE	RECESSED IP65 RATED MODULAR LED PANEL LUMINAIRE WITH TP6 RATED DIFFUSER, UGR19 COMPLIANT AND SWITCHABLE OUTPUT c/w INTEGRAL EMERGENCY 3 HOUR DURATION BATTERIES SET TO 14W	REMOTE DRIVER/ EMERGENCY VERSION	14W LED (4000°K)	LUCECO LIGHTING / LUXPANEL EXTRA / LBP65M540 + LED3EP80
K	RECESSED IP65 RATED MODULAR LED PANEL LUMINAIRE WITH TP6 RATED DIFFUSER, UGR19 COMPLIANT AND SWITCHABLE OUTPUT. SET TO 20W	REMOTE DRIVER	20W LED (4000°K)	LUCECO LIGHTING / LUXPANEL EXTRA / LBP65M540 + LED3EP80
KE	RECESSED IP65 RATED MODULAR LED PANEL LUMINAIRE WITH TP6 RATED DIFFUSER, UGR19 COMPLIANT AND SWITCHABLE OUTPUT c/w INTEGRAL EMERGENCY 3 HOUR DURATION BATTERIES SET TO 20W	REMOTE DRIVER/ EMERGENCY VERSION	20W LED (4000°K)	LUCECO LIGHTING / LUXPANEL EXTRA / LBP65M540 + LED3EP80
L	RECESSED CIRCULAR LOW GLARE LED DOWNLIGHT LUMINAIRE WITH DIE CAST ALUMINIUM BODY, LOW GLARE ALUMINIUM REFLECTOR AND BLACK BEZEL.	REMOTE DALI DIMMABLE DRIVER	9.5W LED (4000°K)	LUCECO LIGHTING / PLATINUM DOWNLIGHT / LDP15W11MS40 + LDP20B8

LUMINAIRE LEGEND				
REF	DESCRIPTION	CONTROL GEAR	LAMPS	MANUFACTURER / REFERENCE
M	RECESSED 1500mm HIGH OUTPUT ALUMINIUM EXTRUDED LED LUMINAIRE IN BLACK FINISH WITH LOW GLARE POLYCARBONATE OPAL DIFFUSER.	INTEGRAL DALI DIMMABLE DRIVER	28W LED (4000°K)	LUCECO LIGHTING / CONTOUR RECESSED / LC07158030040
NE	SURFACE MOUNTED 1500mm IP65 RATED LINEAR LED LUMINAIRE c/w INTEGRAL EMERGENCY 3 HOUR DURATION BATTERIES.	INTEGRAL DRIVER/ EMERGENCY VERSION	50W LED (4000°K)	LUCECO LIGHTING / CLIMATE EXTRA / LCL15072640
P	EXTERNAL WALL MOUNTED LED FLOODLIGHT LUMINAIRE.	INTEGRAL DRIVER	50W LED (4000°K)	LUCECO LIGHTING / GUARDIAN PRO/ LFP50B40F
E1	SELF-CONTAINED NON-MAINTAINED SURFACE MOUNTED EMERGENCY BULKHEAD LUMINAIRE WITH 3 HOUR DURATION EMERGENCY BATTERIES	INTEGRAL DRIVER/ EMERGENCY VERSION	3W LED (6000°K)	LUCECO LIGHTING / TEMPEST STANDARD/ LEM9KM3
E2	RECESSED NON-MAINTAINED EMERGENCY LED DOWNLIGHT LUMINAIRE WITH AREA OPTIC c/w 3 HOUR DURATION EMERGENCY BATTERIES.	REMOTE DRIVER/ EMERGENCY VERSION	3W LED (6000°K)	LUCECO LIGHTING / TEMPEST RECESSED DOWNLIGHT / LEM9KMO
↑[EXIT]	WALL MOUNTED IP65 RATED INTERNALLY ILLUMINATED NON-MAINTAINED EMERGENCY EXIT SIGN WITH UP LEGEND AND INTEGRAL 3 DURATION BATTERIES.	INTEGRAL DRIVER/ EMERGENCY VERSION	3W LED (6000°K)	LITEPLAN / IP65 EXIT SIGN / CESS/NM
→[EXIT]	WALL MOUNTED IP65 RATED INTERNALLY ILLUMINATED NON-MAINTAINED EMERGENCY EXIT SIGN WITH LEFT/RIGHT LEGEND AND INTEGRAL 3 DURATION BATTERIES.	INTEGRAL DRIVER/ EMERGENCY VERSION	3W LED (6000°K)	LITEPLAN / IP65 EXIT SIGN / CESS/NM
↑[EXIT]D	RECESSED INTERNALLY ILLUMINATED MAINTAINED EMERGENCY EXIT SIGN WITH DOUBLE SIDED UP LEGEND AND INTEGRAL 3 DURATION BATTERIES.	INTEGRAL DRIVER/ EMERGENCY VERSION	3W LED (6000°K)	LITEPLAN / RECESSED EXIT SIGN / CETR/MAU

LIGHTING CONTROL LEGEND			
SYMBOL	DESCRIPTION	MANUFACTURER / REFERENCE	NOTES
[1]	RECESSED IP54 PIR PRESENCE / ABSENCE DETECTOR WITH LIGHT SENSOR AND TIME DELAY FUNCTION - STANDALONE TYPE	CP ELECTRONICS - EB05PR-PM-IP	-
[2]	RECESSED IP54 PIR PRESENCE / ABSENCE DETECTOR WITH LIGHT SENSOR AND TIME DELAY FUNCTION - CONTROL SYSTEM TYPE	CP ELECTRONICS - V1TP7-EB05PR	-
[3]	RECESSED PIR LIGHTING CONTROL DEVICE - CONTROL SYSTEM TYPE	CP ELECTRONICS - V1TP7-EB05PR	-
[4]	RECESSED IP54 PIR PRESENCE / ABSENCE DETECTOR WITH LIGHT SENSOR AND TIME DELAY FUNCTION - DALI DIMMABLE TYPE	CP ELECTRONICS - EB05PR-DD	-
LMB	LIGHTING CONTROL SYSTEM HARDWIRED CONTROL MODULE	CP ELECTRONICS - V1TP7-HW-LCM6-RD2	PROVIDE WITH COMMISSIONING HANDSET 1XNLC2HS QUOTATION AVAILABLE-REF-Q-86360-1 CONTACT: kevin.sutherland@tegrand.com
SS	4 SCENE SETTING PLATE WITH STAINLESS STEEL COVER PLATE	CP ELECTRONICS - V1TP7-4SC-SS	-
	EXTERNAL PHOTOCELL LIGHTING CONTROL DEVICE	CP ELECTRONICS - ALC15	-
	RETRACTIVE PUSH TO MAKE LIGHT SWITCH	MK ELECTRIC - GRID PLUS - K4910WH	PROVIDE WITH COVER PLATE TO MATCH FINISH IN AREA AND GRID ASSEMBLY PLATE
	ONE GANG ONE WAY LIGHT SWITCH	MK ELECTRIC - GRID PLUS	PROVIDE WITH COVER PLATE TO MATCH FINISH IN AREA AND GRID ASSEMBLY PLATE
	ROTARY DALI DIMMER SWITCH WITH INTEGRAL 70mA POWER SUPPLY & BLACK COVER AND ROTARY KNOB	LUNATONE - DALI ROT 86459822-PS & 86459822-205	PROVIDE 230V POWER SUPPLY
TS	TIME SWITCH	EATON MEM - MODULAR RANGE	PROVIDE WITH DIN RAIL MOUNTING ENCLOSURE
	STANDALONE EXTERNAL PIR LIGHTING CONTROL DEVICE	STEINEL - STS18	-

LIGHTING CONTROL SYSTEM				
DIMMING CHANNEL No.	SCENE SET 1	SCENE SET 2	SCENE SET 3	SCENE SET 4
1	ON - 100%	ON - 100%	ON - 100%	ON - 100%
2	CHANNEL DIMMED TO CLIENT REQUIREMENTS	CHANNEL DIMMED TO CLIENT REQUIREMENTS	CHANNEL DIMMED TO CLIENT REQUIREMENTS	CHANNEL DIMMED TO CLIENT REQUIREMENTS
3	CHANNEL DIMMED TO CLIENT REQUIREMENTS	CHANNEL DIMMED TO CLIENT REQUIREMENTS	CHANNEL DIMMED TO CLIENT REQUIREMENTS	CHANNEL DIMMED TO CLIENT REQUIREMENTS
4	CHANNEL DIMMED TO CLIENT REQUIREMENTS	CHANNEL DIMMED TO CLIENT REQUIREMENTS	CHANNEL DIMMED TO CLIENT REQUIREMENTS	CHANNEL DIMMED TO CLIENT REQUIREMENTS

SCHEDULE OF ABBREVIATIONS USED			
EX	DENOTES EXISTING RETAINED	LL	LOW LEVEL (450mm AFFL)
HL	HIGH LEVEL (2200mm)	CV	CEILING VOID
WP	IP65 / WEATHERPROOF	MC	METALCLAD ACCESSORY
AC	AIR CONDITIONING	EF	EXTRACT FAN
ZT	ZIP TAP WATER BOILER	FR	FRIDGE
AW	ABOVE WORKTOP	DW	DISHWASHER
CG	CONTROL GATE	EH	ELECTRIC HEATER
DA	DISABLED ALARM CALL	PA	PUBLIC ADDRESS SYSTEM

FINISHES SCHEDULE	
AREA	ACCESSORY FINISH
PLANT / SWITCHROOM	SURFACE MOUNTED METALCLAD
MAINTENANCE WORKSHOP	SURFACE MOUNTED METALCLAD
EXTERNAL	METALCLAD / PLASTIC / IP65 RATED MINIMUM
COMMUNITY STUDIO	RECESSED / BRUSHED STAINLESS STEEL
KITCHEN / WCs	RECESSED / WHITE PLASTIC
TREATMENT STUDIO	RECESSED / BLACK PLASTIC
OFFICES / LOBBY / STAFF ROOM / REST ROOM	RECESSED / WHITE PLASTIC
CHANGING VILLAGE	SURFACE MOUNTED IP65 RATED
CHANGING VILLAGE	SURFACE MOUNTED METALCLAD IN VARIETY UNITS / CEILING VOID

LIGHTING CONTROL METHOD	
LC1	PRESENCE DETECTION - AUTO ON / AUTO OFF AFTER 20 MINUTE INACTIVITY PERIOD
LC2	ABSENCE DETECTION - MANUAL ON / OFF AT WALL SWITCH, AUTO OFF AFTER 20 MINUTE INACTIVITY PERIOD
LC3	MANUAL ON / OFF AT WALL SWITCH
LC4	LIGHTING DIMMED VIA LIGHTING CONTROL MODULE SCENE SETTING DIMMER SWITCH WITH USER OVERRIDE DIMMING FACILITY, AUTO OFF AFTER 20 MINUTE INACTIVITY PERIOD
LC5	LIGHTING MANUALLY DIMMED VIA ROTARY DIMMER SWITCH, AUTO OFF AFTER 20 MINUTE INACTIVITY PERIOD
LC6	LIGHTING AUTOMATICALLY CONTROLLED ON / OFF VIA LIGHTING CONTROL MODULE, AUTO OFF AFTER 20 MINUTES INACTIVITY PERIOD

FINAL POSITIONS OF ALL ELECTRICAL ACCESSORIES TO BE CONFIRMED

T02	TENDER ISSUE - REVISED AS CLOUDED	LT	21/10/24
T01	TENDER ISSUE	LT	15/10/24
P01	PRELIMINARY ISSUE	LT	14/10/24
REV:	DESCRIPTION:	BY:	DATE:
STATUS: TENDER ISSUE			

**Tyse Design & Consultancy Limited**  
2 Osier Link, Amphil, Bedfordshire MK45 2TW  
☎ 07954 490970  
✉ lee@tyesdesign.co.uk

**Ware Town Council**

PROJECT: WARE PRIORY LIDO, PROPOSED EXTENSION & REFURBISHMENT  
PRIORY STREET, WARE SG12 0DE

TITLE: ELECTRICAL SERVICES  
PROPOSED LIGHTING LAYOUT  
(Sheet 1 of 2)

SCALE AT A1: 1:50	DATE: October 2024	DRAWN: RT	CHECKED: LT
PROJECT NO: 240804	DRAWING NO: 240804/E/03	REVISION: T02	