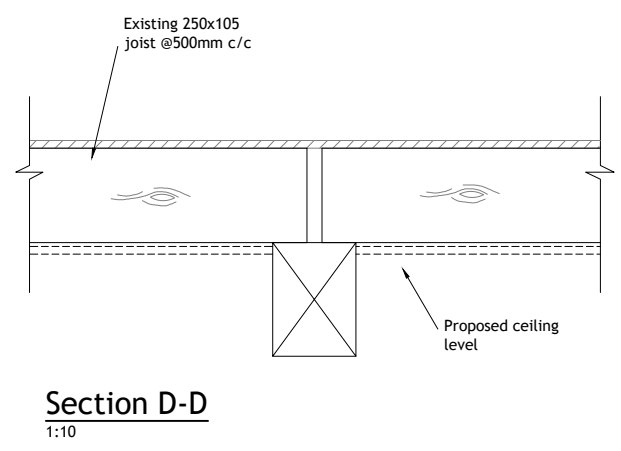
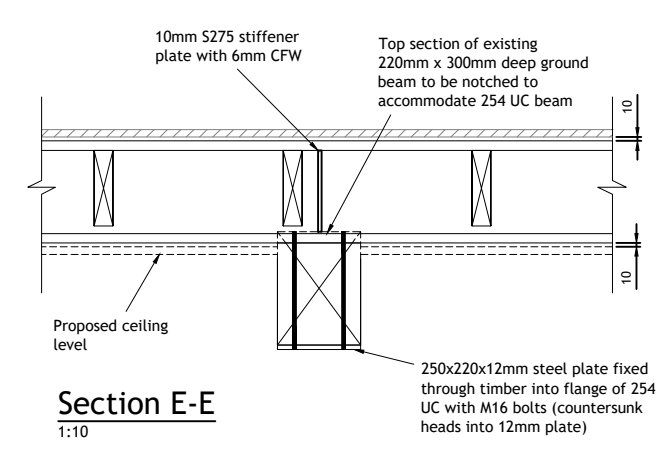


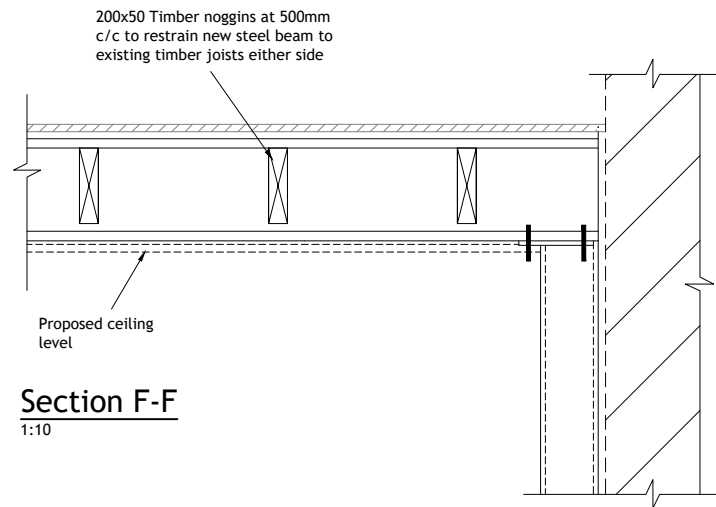
**Section C-C**  
1:10



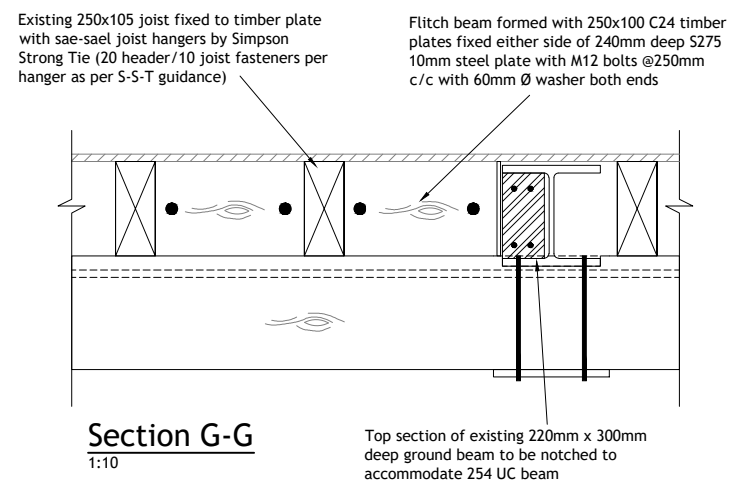
**Section D-D**  
1:10



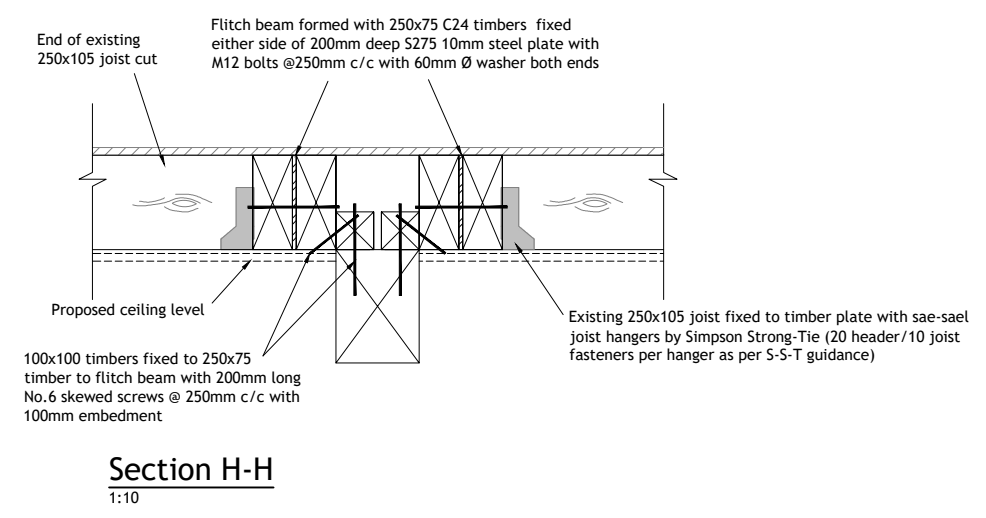
**Section E-E**  
1:10



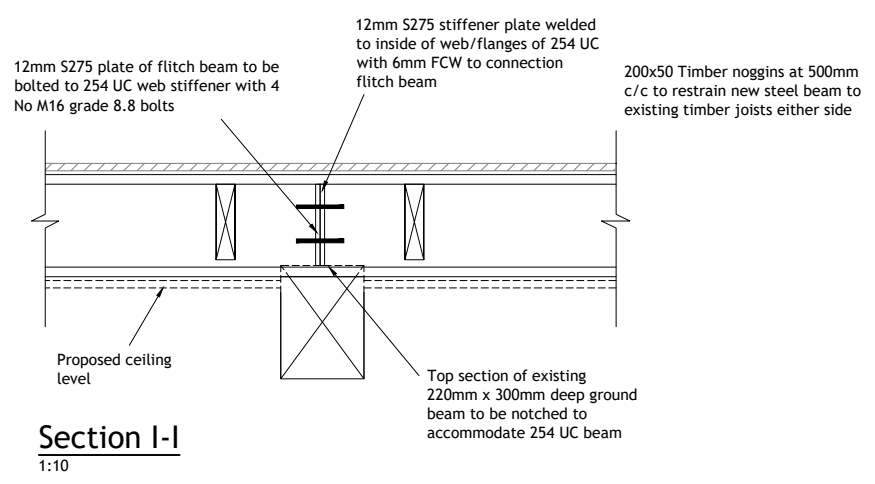
**Section F-F**  
1:10



**Section G-G**  
1:10



**Section H-H**  
1:10



**Section I-I**  
1:10

Rev	Date	By	Chkd	Description
T1	31.01.22	JM	TP	Revised flitch beam detail
P1	29.11.21	JM	TP	Preliminary Issue

Status: **Tender**

12 Dowry Square Hotwells Bristol BS8 4SH  
T:0117 929 7949 F:0117 927 3269  
E:info@kb-2.co.uk W:www.kb-2.co.uk



KB2 Consulting Engineers Limited  
Registered in England & Wales. No. 09517305

<b>Client:</b> Town Hall Midsomer Norton
<b>Project:</b> Town Hall Midsomer Norton
<b>Drawing:</b> Sections and Details Proposed Extension

Scale: 1:10@ A1 Date: Oct'21

CAD: JM Checked: TP Sign off: MH

Drg no. 221142 - 107 Rev. T1