

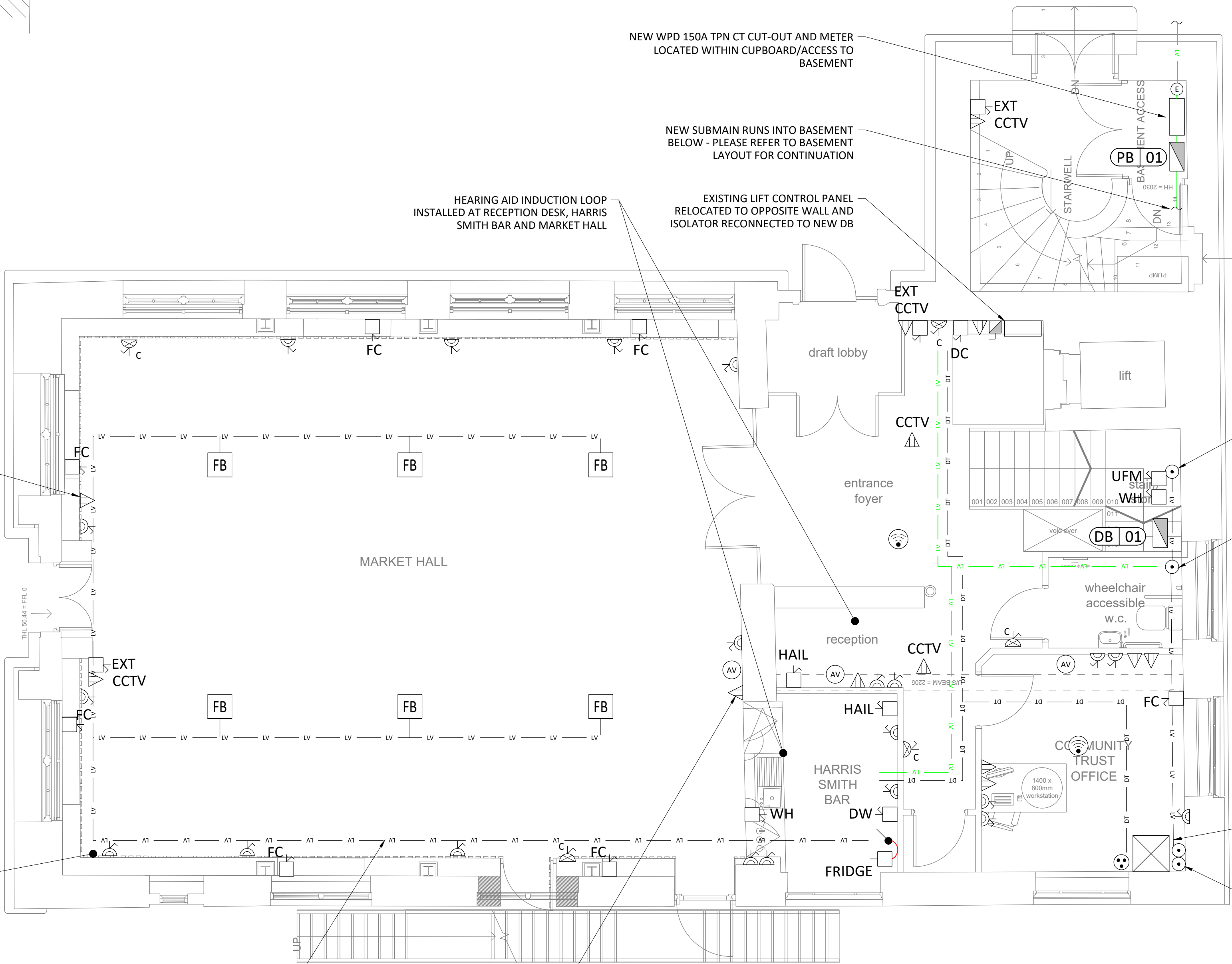
Legend:

- LV LV CABLE BASKET GENERALLY RUN ABOVE CEILING VOID - EXCEPT IN DOUBLE HEIGHT SPACES
- DT DATA CABLE BASKET GENERALLY RUN ABOVE CEILING VOID
- ABOVE COUNTER SWITCH LINKED TO FCU
- CLEANER'S SOCKET
- ELECTRICITY METER
- SINGLE DATA OUTLET (SDO)
- SINGLE PHASE ISOLATOR
- SINGLE SWITCHED SOCKET OUTLET (SSSO)
- TWIN SWITCHED SOCKET OUTLET (TSSO)
- EXTERNAL IP65 RATED TWIN SWITCHED SOCKET OUTLET (TSSO)
- AV PLATE FOR POTENTIAL SCREEN - INCLUDING HDMI, VGA AND AUDIO
- THREE PHASE COMMANDO OUTLET
- DISTRIBUTION BOARD
- THREE PHASE ISOLATOR
- TWIN DATA OUTLET (TDO)
- 2 COMPARTMENT FLOOR BOX - 2No.TSSO's
- WIRELESS ACCESS POINT - POWER AND DATA OUTLET PROVIDED BY CONTRACTOR SWITCHED FUSED CONNECTION UNIT (SFCU) FOR:
 - EF - EXTRACT FAN
 - DC - DOOR CONTROLLER
 - WH - WATER HEATER
 - HD - HAND DRYER
 - ACP - ASSISTANCE CALL PANEL
 - DW - DISHWASHER
 - FC - FAN CONVECTOR
 - UFM - UNDERFLOOR HEATING MANIFOLD

Notes:

- THIS DRAWING SHALL BE READ IN CONJUNCTION WITH ALL OTHER DRAWINGS, SPECIFICATIONS, SCHEDULES AND BUILDING MODELS INCLUDING SCHEMATICS. THE CONTRACTOR SHALL REFER TO THE ARCHITECTS DRAWINGS FOR SETTING OUT DETAILS/DIMENSIONS.
- THE ELECTRICAL SERVICES INSTALLATIONS ARE DESIGNED TO COMPLY FULLY WITH THE BUILDING REGULATIONS STANDARDS, AND ARE DESIGNED IN ACCORDANCE WITH THE RECOMMENDATIONS OF THE CIBSE GUIDES, AS ISSUED BY THE CHARTERED INSTITUTION OF BUILDING SERVICES ENGINEERS.
- REFER TO THE ARCHITECTS DRAWINGS FOR DETAILS OF ALL BUILDING FIRE COMPARTMENTATION BARRIERS. ANY SERVICES PENETRATING THE FIRE COMPARTMENT SHALL BE FIRE SEALED USING THE APPROVED PENETRATION DETAIL.
- ALL PENETRATIONS THROUGH FIRE WALLS SHALL BE FIRE STOPPED TO MAINTAIN THE FIRE INTEGRITY OF THE FIRE WALL. ALL SLAB PENETRATIONS TO HAVE FIRE STOPPING TO MAINTAIN THE INTEGRITY OF THE FIRE RATED SLAB. THE CONTRACTOR SHALL MAKE GOOD ALL PENETRATIONS TO THE APPROVAL OF BUILDING CONTROL.
- THIS DRAWING SHALL NOT BE USED FOR INSTALLATION. THE ELECTRICAL SERVICES CONTRACTOR SHALL BE RESPONSIBLE FOR PRODUCTION OF COORDINATED INSTALLATION DRAWINGS CHECKED WITH ACTUAL SITE DIMENSIONS.
- ALL DIMENSIONS WHERE INDICATED ARE IN MILLIMETRES UNLESS STATED OTHERWISE. ALL DIMENSIONS SHALL BE CHECKED ON SITE PRIOR TO COMMENCEMENT OF ANY WORKS.
- ALL CABLES TO BE WITHIN VOIDS UNLESS OTHERWISE STATED.

BASEMENT LAYOUT
SCALE: 1:50



SAFETY, HEALTH & ENVIRONMENTAL INFORMATION

FOR DETAILS OF SITE-WIDE AND GENERAL RISKS, TO BE READ IN CONJUNCTION WITH THESE NOTES, SEE THE CONTRACT DOCUMENTS AND, WHERE WORKS ARE NOTIFIABLE, THE PRE-CONSTRUCTION INFORMATION

IN ADDITION TO THE RISKS NORMALLY ASSOCIATED WITH THE TYPES OF WORK DETAILED ON THIS DRAWING, NOTE THE FOLLOWING RISKS AND INFORMATION:

CONSTRUCTION:
C1 Asbestos - Refer to DHRA for details
C2 Electrocution from working on live services - Refer to DHRA for details
C3 Working at height to install services - Refer to DHRA for details

DISMANTLING/DEMOLITION (FUTURE):
D1.
D2.
D3.

IT IS ASSUMED THAT ALL WORKS WILL BE CARRIED OUT BY A COMPETENT CONTRACTOR WORKING, WHERE APPROPRIATE, TO AN APPROVED METHOD STATEMENT

THIS DRAWING IS NOT TO BE USED FOR CONSTRUCTION. INSTALLATION DRAWINGS SHOULD BE PRODUCED BY THE CONTRACTOR AND AGREED WITH THE CLIENT TEAM PRIOR TO ANY INSTALLATION WORK

Rev	Date	By	Chk	Aprvd	Description

PROJECT

Midsomer Norton Town Hall

CLIENT

Bath & North East Somerset Council

Method Consulting

www.methodllp.com

Bristol Tel: 0117 203 5160

DRAWING TITLE

Small Power & Data Services Ground Floor

STATUS

S2 - FOR TENDER

DATE	SCALE	DRWN BY	CHK BY	APVD BY
21.10.21	1:50 - A1	ARG	DMS	DMS

DRAWING NUMBER	REVISION No.
1716PMN-MET-P1-00-DR-E-6201	S2 - T01

Scaling Note: Do NOT scale from this drawing.