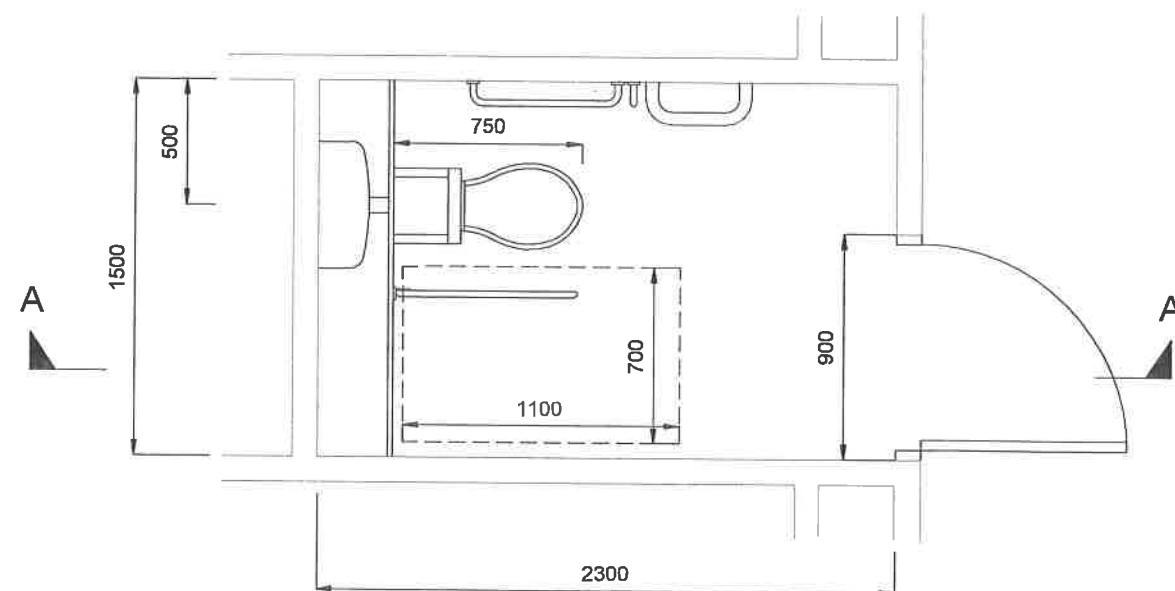
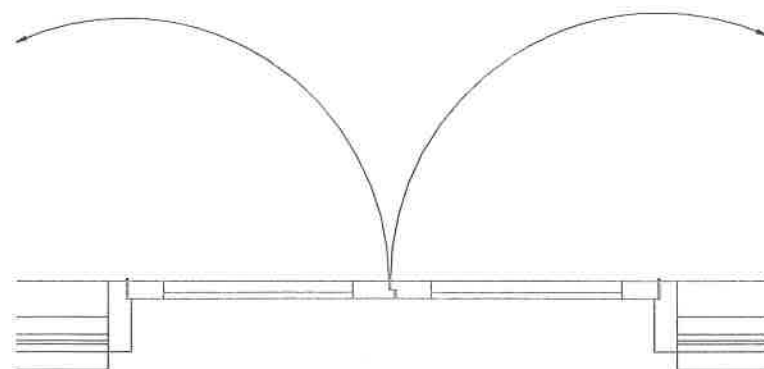
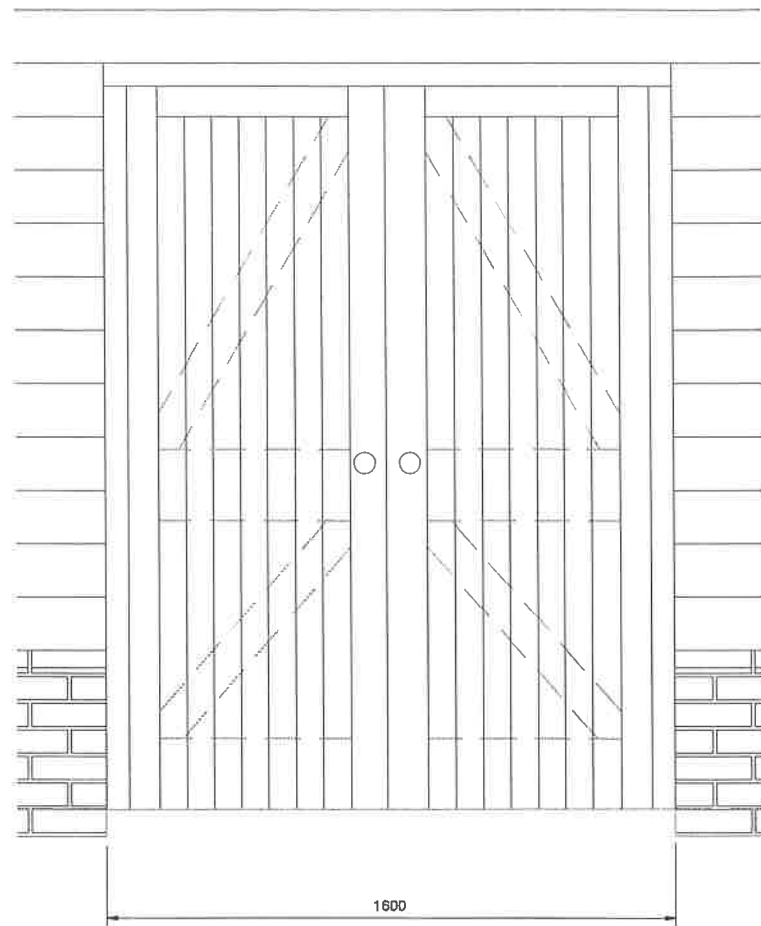


SECTION A-A



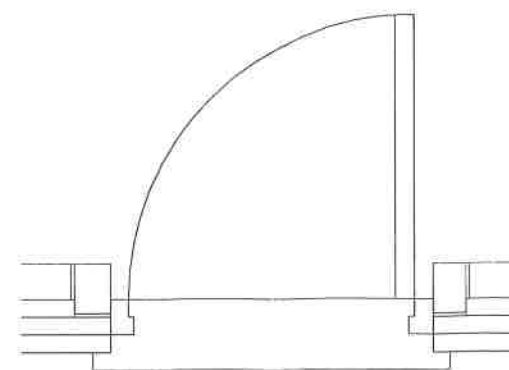
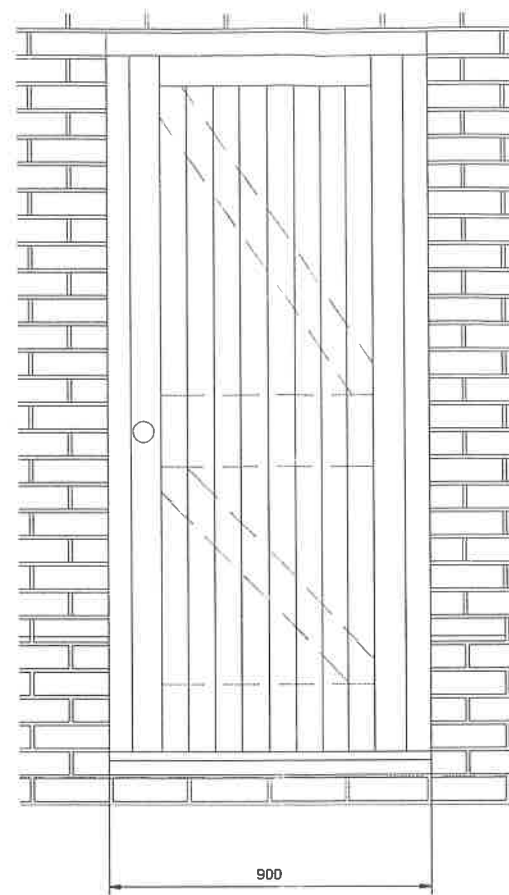
DISABLED PERSONS TOILET - PLAN 1:20

PROJECT	UTTLESFORD DISTRICT COUNCIL			
	Public Toilets - White Street Dunmow			
DRAWING	CORPORATE DIRECTOR OF DEVELOPMENT			
	U/CON/CS/480/6			
SCALE	1:20			
	D Osborn			
DATE	Sept 2000			



ENTRANCE DOORS

1:10



CLEANERS STORE DOOR

ENTRANCE DOORS

Construct Doors from Machine Finish Western Red Cedar complete with tongue and grooved boarding all to match with entrance cladding. The following Laidlaw Orbis range ironmongery will be required:-

2 no. 50 mm Ball Knobs (P1131 SS7)
Sash Lock Case (11 971)
Rebate Set (09 915)
2 no. Lever Action Flush Bolts (SS7)
2 no. Floor Mounted Door Stop (C32 104 SS7)
2 no. Key Escutcheon (P1333 SS7)
6 no. Bearing Hinges (37 800.2 SS7)

CLEANERS DOOR

Construction to match entrance doors complete with the following Laidlaw Orbis range ironmongery:-

2 no. 50 mm Ball Knobs (P1131 SS7)
Sash Lock Case (11 971)
Key Escutcheon (P1333 SS7)
3 no. Bearing Hinges (37 800.2 SS7)
Elliptical Section Door Stop (32 901 SS7)

TOILET DOORS

Construct doors as internal lipped flush doors and finished with a Western Red Cedar veneer complete with clear seal. To suit 900 mm structural opening. The following Laidlaw Orbis range ironmongery will be required:-

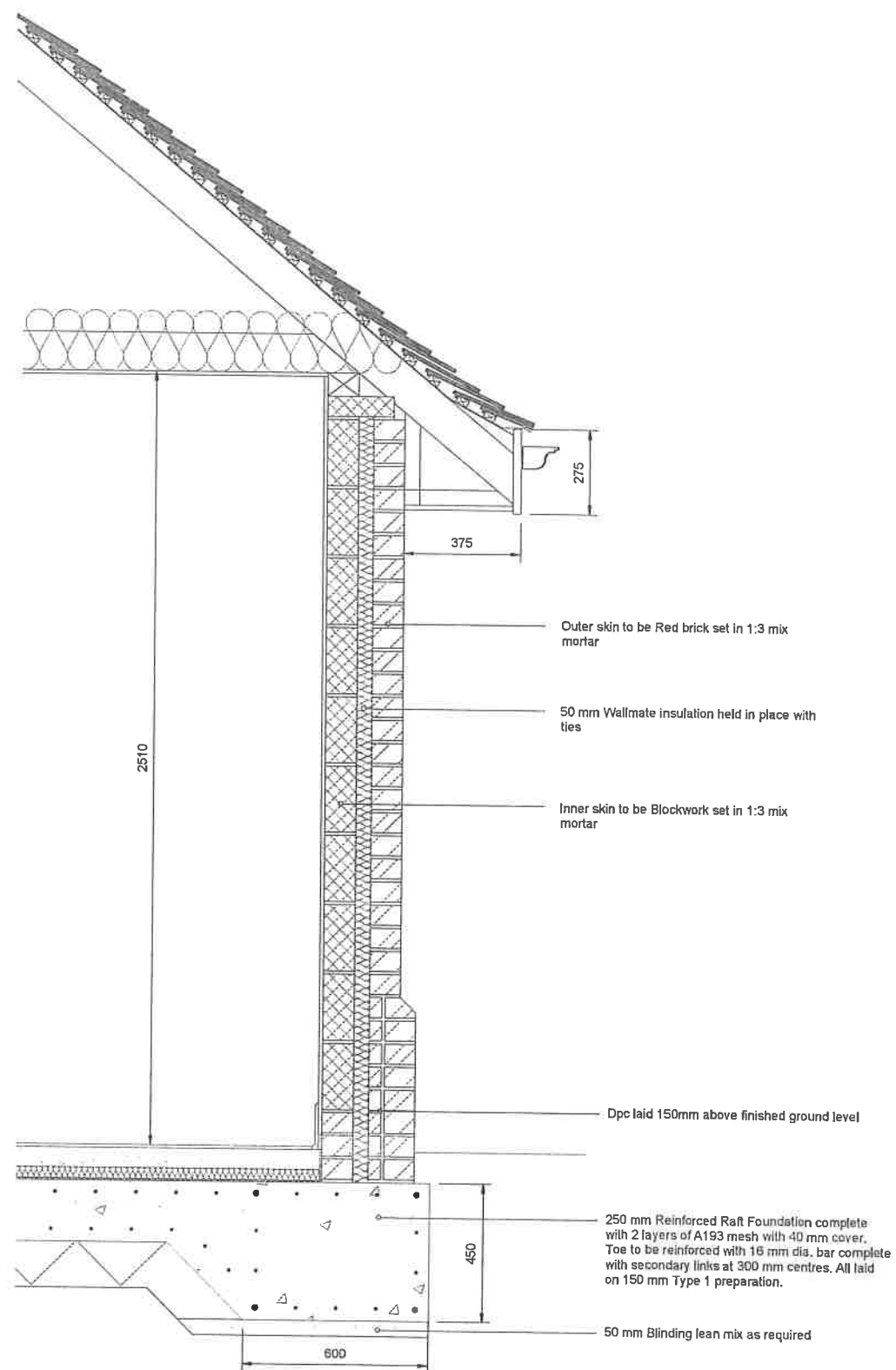
2 no. 25 x 16 mm Elliptical Section 300 mm long Pull Handle (54 900.13 SS7)
2 no. 325 x 75 mm Push Plate (52 702 SS7)
Male Symbol (60 900.1 SS7)
Female Symbol (60 900.2 SS7)
2 no. Elliptical Section Door Stop (32 901 SS7)
6 no. Bearing Hinges (37 800.2 SS7)
2 no. Overhead Door Closers (31 903.1 ESS)

DISABLED TOILET DOOR

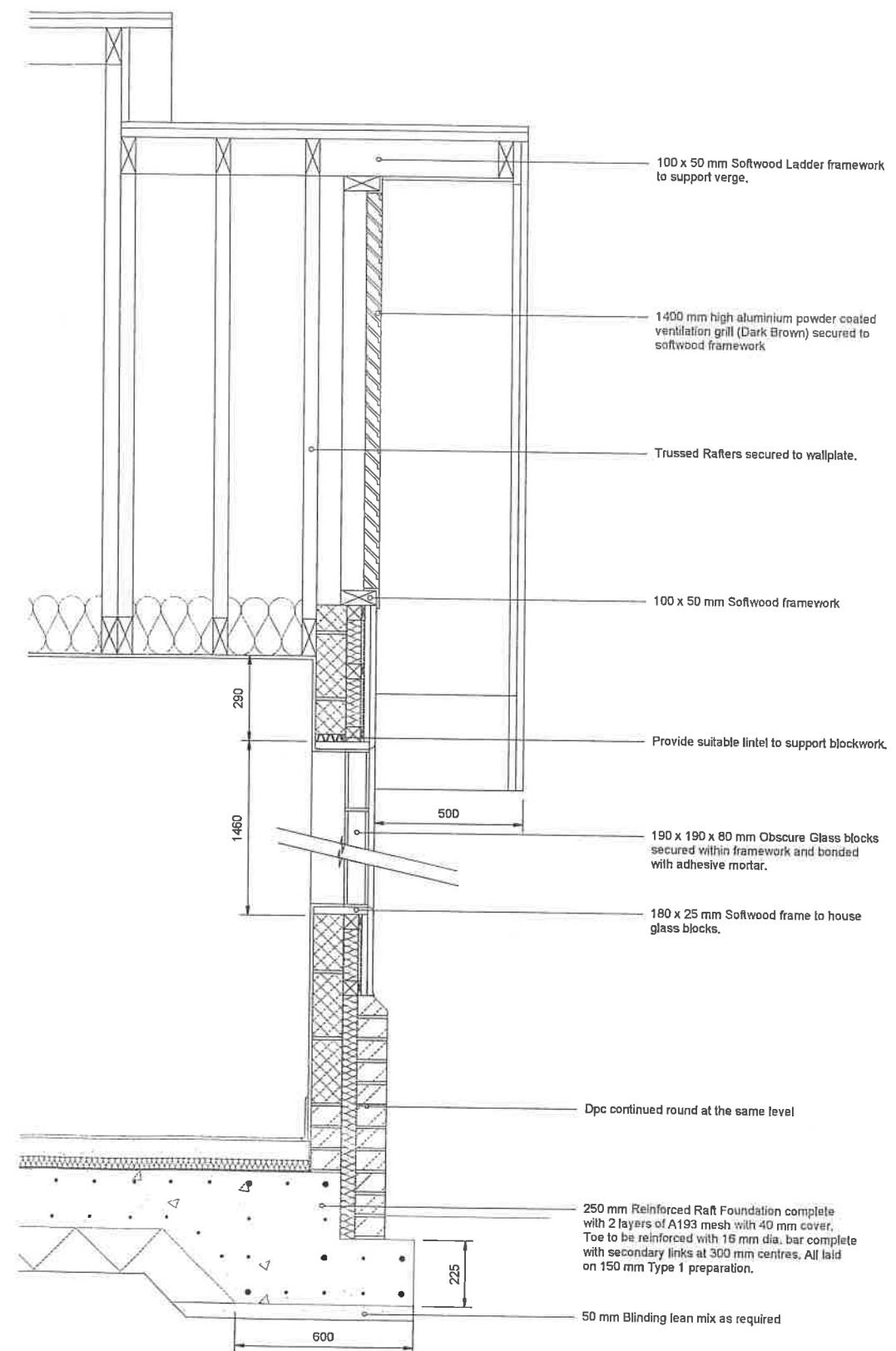
Construction to match toilet doors complete with the following ironmongery:-

2 no. 25 x 16 mm Elliptical Section 300 mm long Pull Handle (53 926.30 SS7)
Covered Escutcheon with large turn (51 800.15 SS7)
Covered Escutcheon with privacy indicator (51 800.4 SS7)
Bathroom Dead Bolt (13 712)
Disabled Symbol (60 900.3 SS7)
3 no. Bearing Hinge (37 800.2 SS7)
Hat & Coat Hook (81 801 SS7)
Perko Door Closer

Public Toilets - White St. Great Dunmow		U/CON/CS/505/5	
Door Details		1 : 10	
		D Osborn	
		Sept 2000	

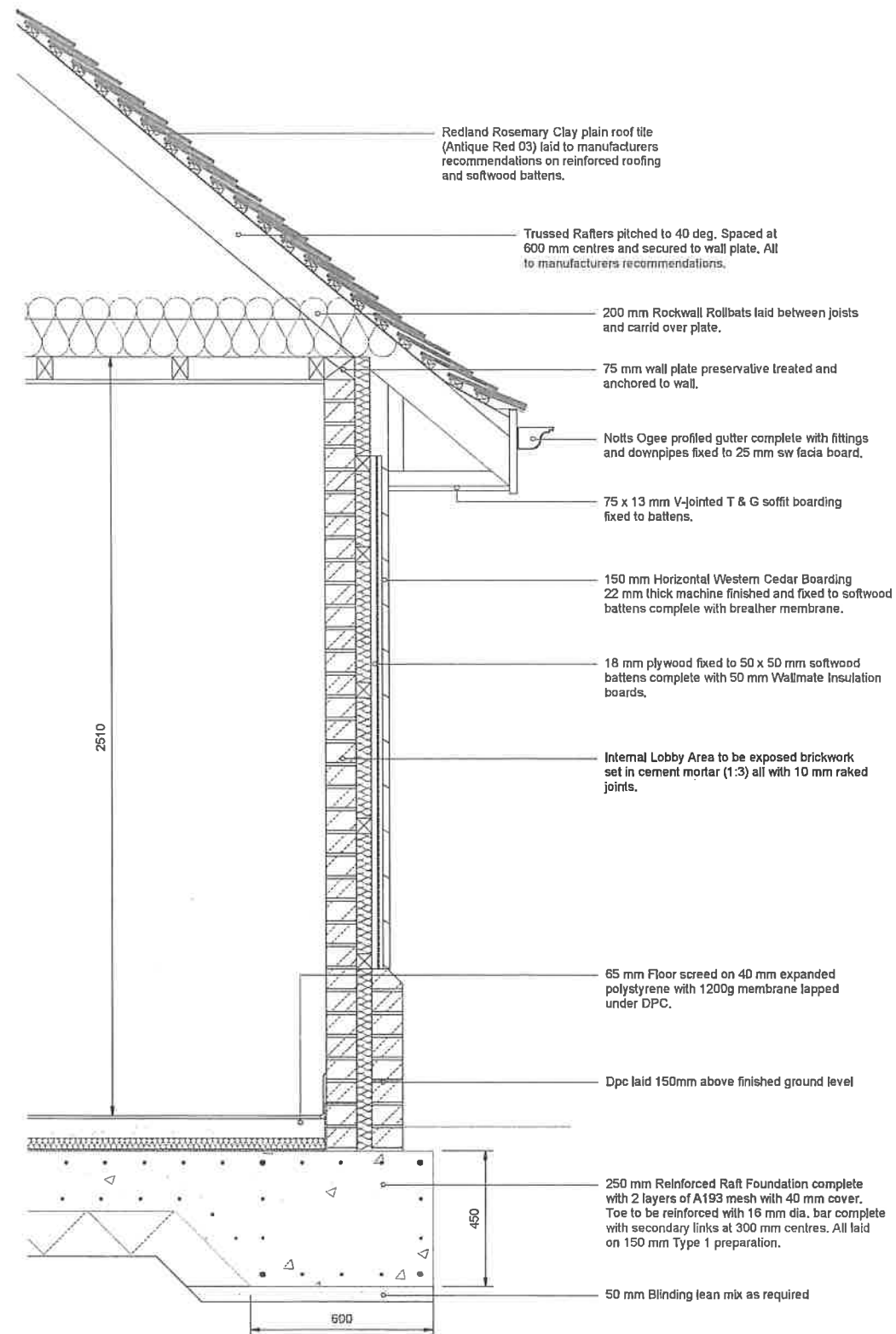


REAR WALL SECTION 1:10

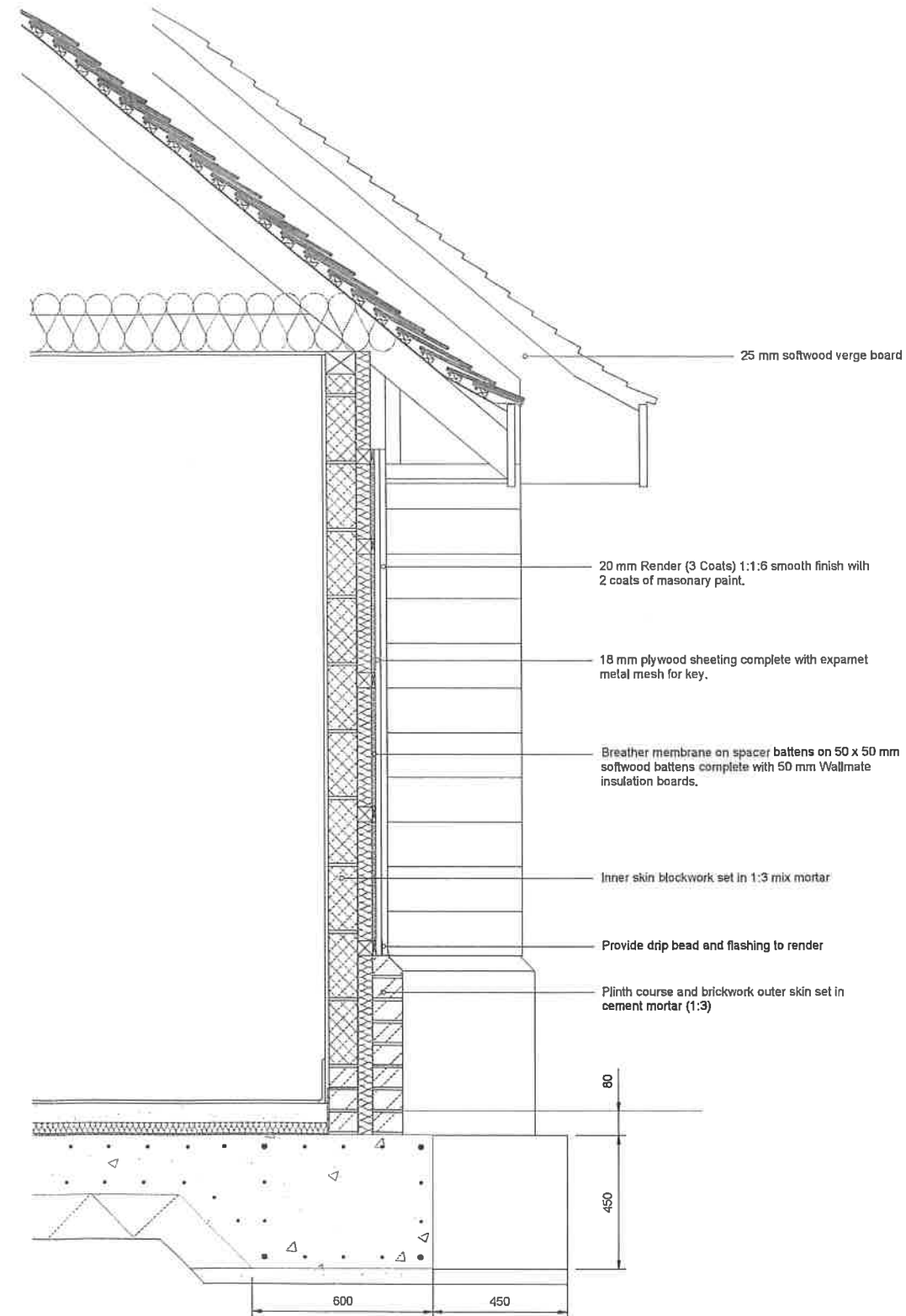


GABLE SECTION 1:10

Public Toilets - White St. Great Dunmow		OFFICE OF DISTRICT COUNCIL	
Wall Sections (2)		U/CON/CS/505/4	
1:10	D Osborn	Jan 2001	

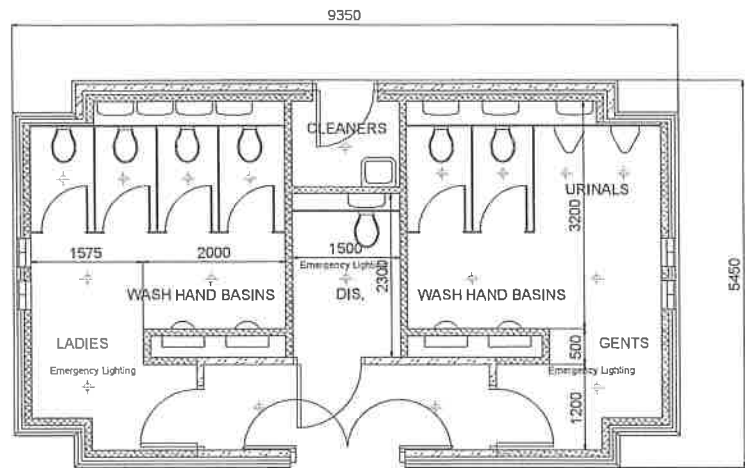


ENTRANCE WALL SECTION 1:10

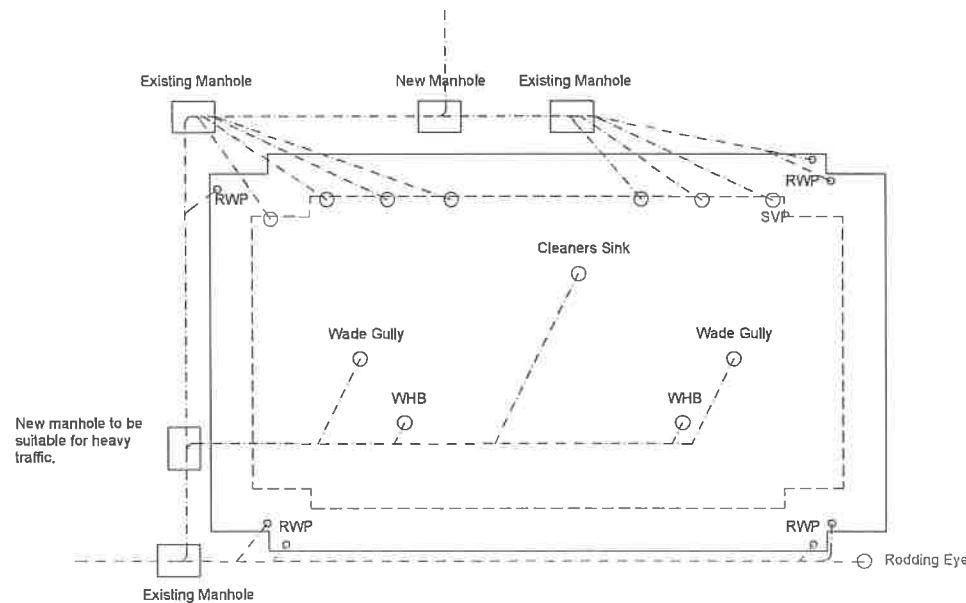


FRONT WALL SECTION 1:10

Public Toilets - White St. Great Dunmow		GREAT BROMLEY DISTRICT COUNCIL	
Wall Sections (1)		U/CON/CS/505/3	
1:10		D Osborn Feb 2001	



Floor Plan 1:50



Foundation/ Drainage Plan 1:50

BUILDING CONSTRUCTION

Excavate for new reinforced raft foundation. Provide foundation with 16 mm dia. round bar cages complete with secondary links at 300 mm centres. Provide 2 layers of A193 mesh with 40 mm cover. All laid on 150 mm Type 1 preparation. Construct cavity walls to dpc level in two skins of brickwork in cement mortar (1:3) with a 50 mm cavity filled with mortar. Allow for construction of plinth course in Ambion Warnham Red Stock Bricks for external skin and Plasmore Aglite for internal skin. Construct floor with 40 mm expanded polystyrene and 65 mm floor screed all on 1200g membrane welded and taped at joints and lapped under dpc. Construct external cavity walls complete with cavity insulation all as detailed. Construct internal skin with Plasmore Aglite blockwork and entrance lobby with brickwork all as detailed. Close cavity at eaves with blockwork and finish with 75 x 100 mm wall plate anchored to internal walls with mild steel straps at 2.0 m centres.

ELECTRICS

Allow for reconnection of electric supply by E.E.B. within cleaners store to MK Electric Ltd consumer unit. Supply and fit Cromplon Solstar 170 IP rated recessed downlight luminaire (SRV 113) with high quality aluminium reflector within ceiling as shown. Allow for 3 no. emergency rated lights of the same model (ER SRV 113) and 1 no. external vandal resistant 'Bijou Minor' (Black) with separate movement detector sensor for cleaners door. Provide 1 no. Noral Lighting 'Marbella' external surface mounted light to be positioned above entrance doors to toilets. Supply and fit MK Electric Ltd 7-day dial timer to control all lighting requirements (except Cleaners external light). Allow for connection of recessed handwasher-driers to manufacturers instructions and provision of switchsocket outlet and Heatrae Express 15 water heater within cleaners store.

DRAINAGE

Excavate for and lay new soil and surface water drainage system as detailed. System to comprise of 100 mm dia. vitrified clay Supersleeve with Hepsleeve flexible joints bedded on and surrounded with pea shingle 150 mm thick. Minimum cover to be 450 mm or 75 mm concrete cover over. Excavate for and build new manhole where shown with C20P concrete base constructed with engineering brickwork flush pointed and corbelled over as necessary. All external manholes and covers to allow for heavy traffic. Allow for all reconstructions into existing manholes and adjustments as necessary. Provide 100 mm SVP where shown complete with cowl and flashing. Allow for connection of surface water drainage to main surface water sewer. Allow for diversion of traffic if required. Reinstatate all trenches to match with existing car park.

SANITARYWARE

All sanitaryware and fittings to be supplied by Armitage Shanks and Armitage Venasta washroom systems. Cubicles to be Equinox High Pressure Laminate with powder coated aluminium frame (light grey) complete with Contour Wc suites and Indiflow overflow system. Doors and back panels colour to be Apple with matching edges, side panels to be Azure with Lapis lipping. All complete with extruded aluminium pilasters, headrail and wall channels. Back panels to have graphite flash gaps. Urinals to be Contour range vitreous china complete with concealed trap, concealed cistern, wastes, pipework, fixings, etc. Include for sensor controlled flow kit. Wash Hand Basins to be Wallgates 'Classic' recessed, moulded handwashing and drying unit, sensor operated fully automatic finished in sandstone. Supply and fit 1 No. Handrinse WHB with 1 No. lever tap to disabled toilets and 1 No. cleaners sink at low level to store complete with taps. Include for all fitting, plumbing to drainage system, electrics, earthing, etc to all sanitaryware. Allow for 900 x 600 mm Stainless Steel Mirror to Ladies and Gents toilets and toilet roll dispensers to each cubicle. Allow for sanitary towel bins within each ladies cubicle. Disabled cubicle to comply with Part M and include 2 No. 600 mm handrails and 1 No. hinged support rail.

FINISHES

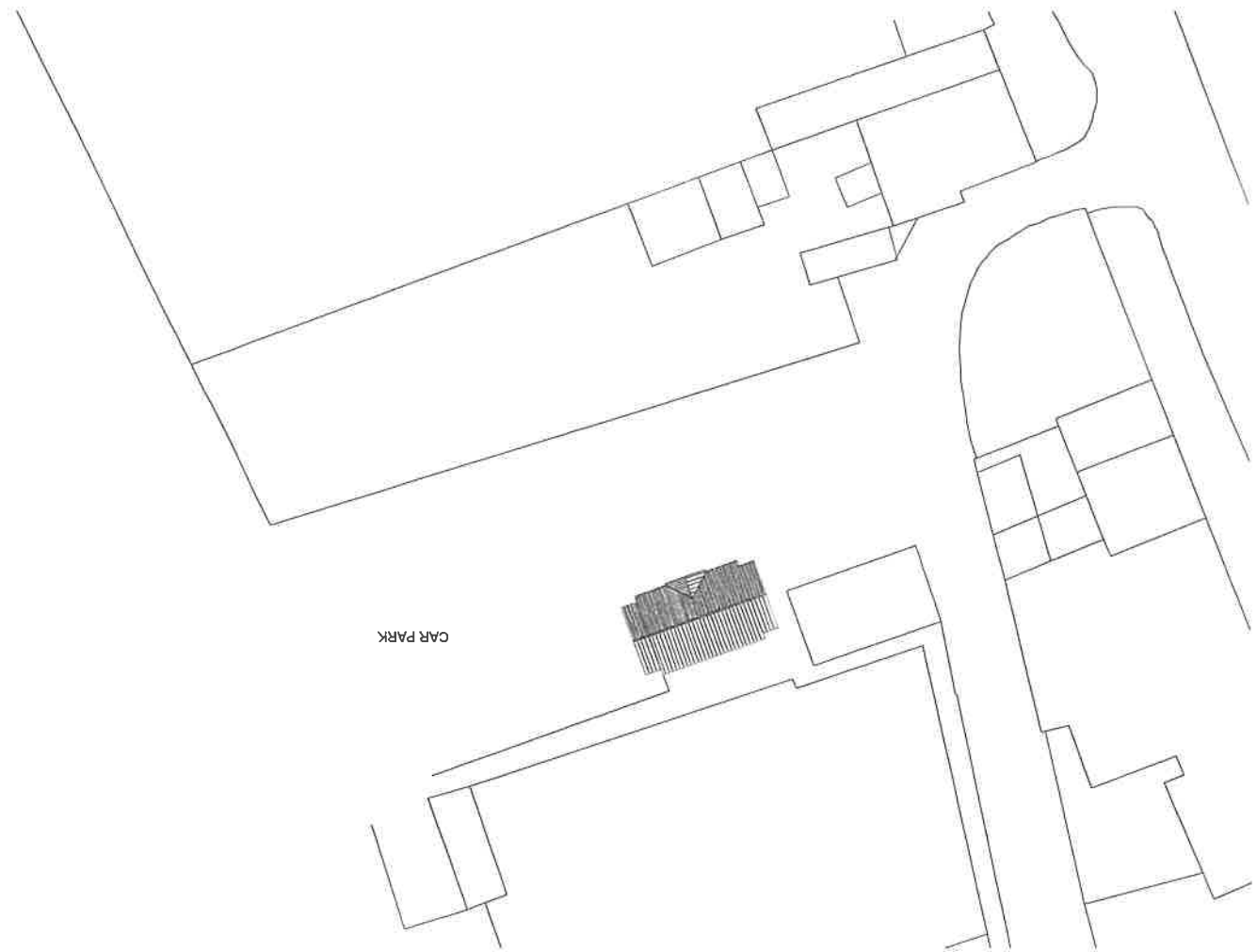
Prepare and apply one mist coat and two full coats of emulsion paint to all exposed internal walls to store. Knot, prime, stop and paint two undercoats and one finishing coat of gloss paint to woodwork including fascia, shelves to cleaners store, loft hatch, etc. Include for all exposed pipework. Knot, prime, stop and apply two coats of Sadolin Extra semi gloss stained finish to all windows, doors, frames, linings, etc. Prepare, supply and fix A G Ceramic Tiles Ltd range to floors and walls. Provide and fix 300 x 300 mm non slip Rivan finish floor tiles complete with matching 75 mm upturn Bullnose skirting to all floor surfaces. Provide and fix 300 x 300 mm Naturale finished tiles to lower walls and upper walls from floor to ceiling to all exposed toilet walls complete with decorative border. All laid and finished to manufacturers recommendations.

VENTILATION

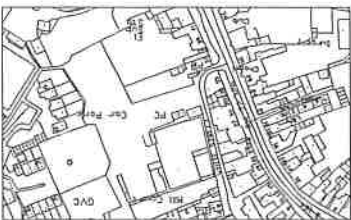
Ventilation shall be provided at high level within the gable ends in the form of a triangular frame consisting of a powder coated (colour to match stain) aluminium louvre panels set within a softwood frame complete with insect screen. Freeflow ventilation will then be provided across the roof space dispersing at 500 x 900 mm ceiling mounted ventilation panels Model L-CB2G as supplied by Air Diffusion Ltd, Birchwood Trading Estate, 164 Great North Road, Hatfield, Herts.

PROJECT	Public Toilets - White Street Great Dunmow		UTTLESFORD DISTRICT COUNCIL (TOWN CLERK'S OFFICE) 100000/0210 SUPERVISOR 100000/0210 100000/0210	
			100000/0210	
DRAWING	Proposed Plan and Drainage Details		U/CON/CS/505/2	
			100000/0210	
DATE		100000/0210		
As Shown		D Osborn		
		July 2000		

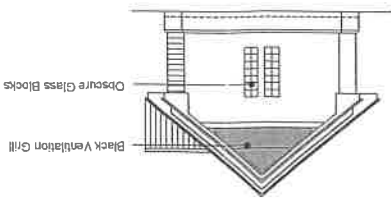
SITE PLAN 1:250



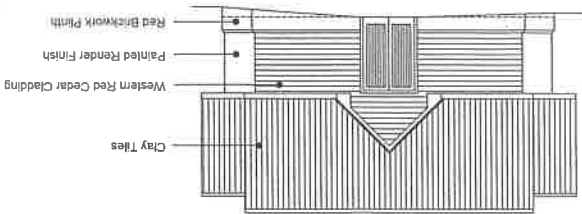
LOCATION PLAN 1:2500



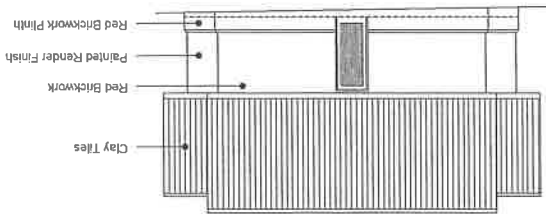
SIDE ELEVATIONS 1:100



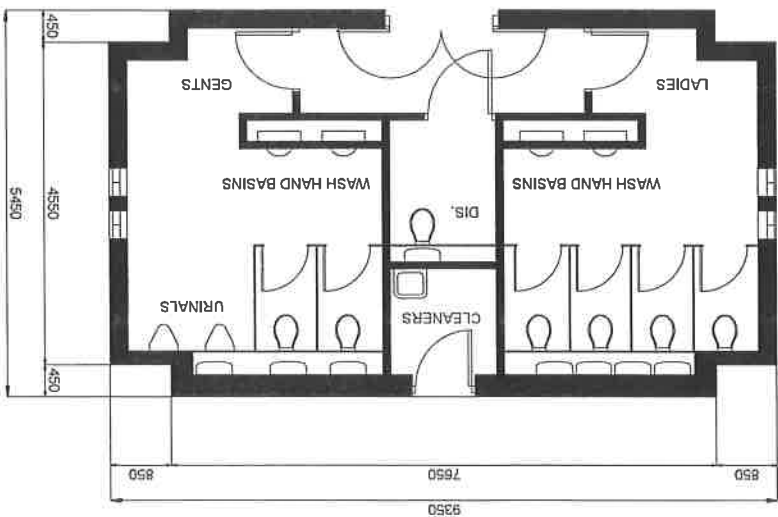
FRONT



BACK



FLOOR PLAN 1:50



PROJECT
Public Toilets - White Street
Great Dunmow

PROPOSED Plan and Elevations

DESIGNED BY U/CON/CS/505/1	DATE 10/11/2011
DRAWN BY D. O'SHEA	DATE 10/11/2011
CHECKED BY D. O'SHEA	DATE 10/11/2011
APPROVED BY D. O'SHEA	DATE 10/11/2011

UTLERSFORD DISTRICT COUNCIL
COUNCIL OFFICE
100, MARKET STREET
GREAT DUNMOW
SUSSEX MK20 1JH
TEL: 01293 811111
FAX: 01293 811112
E-MAIL: info@utlersford.gov.uk