

DO NOT USE FOR SETTING OUT
 Godsell Arnold Partnership Ltd (GAP Ltd) drawings are not to be used for setting out. Drawings issued in .dwg format are for information only. Use of .dwg files for setting out is entirely at the Contractor's risk.

NOT FOR CONSTRUCTION

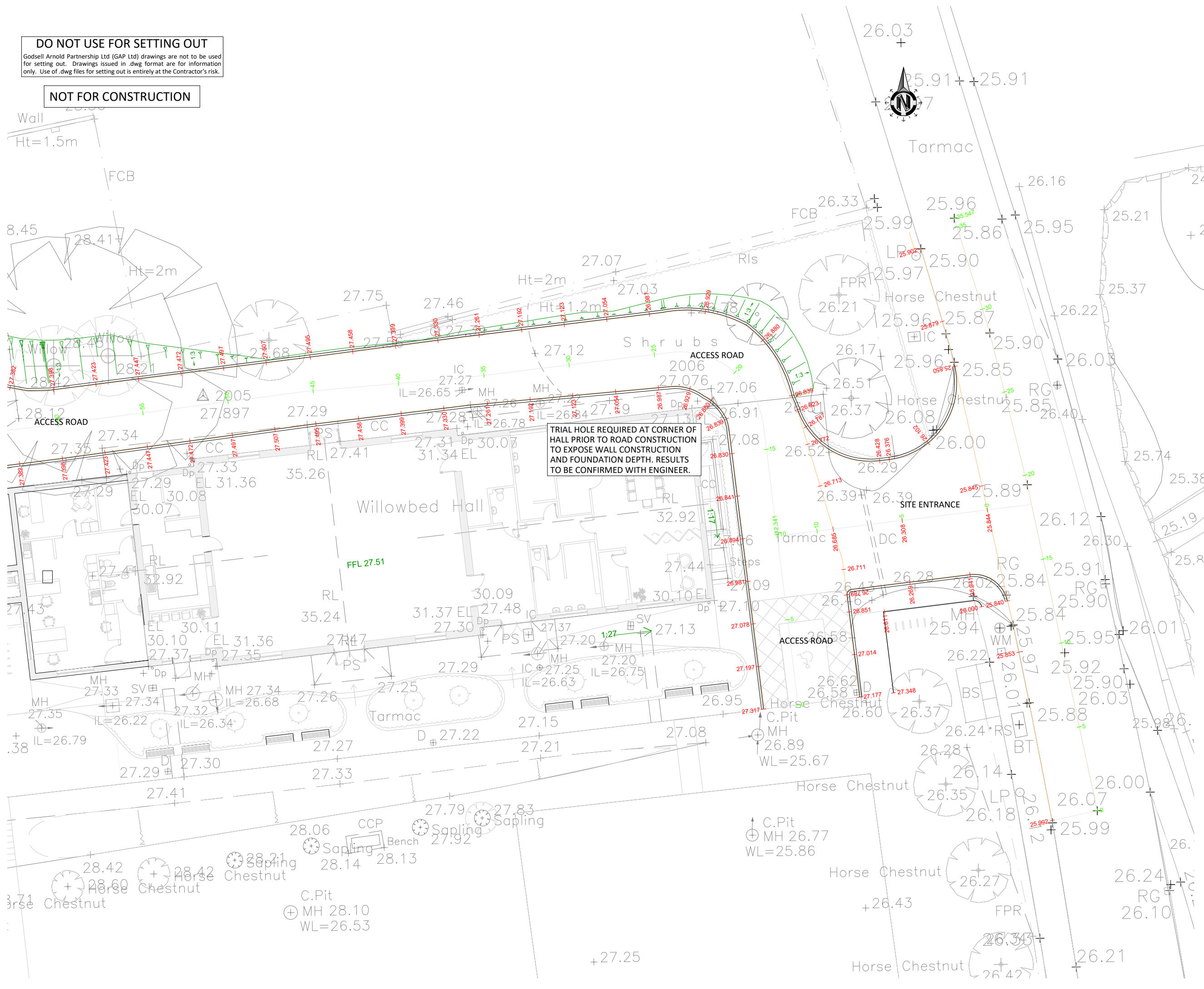
General Notes

1. These drawings are to be read in conjunction with all relevant Architect's and Engineer's drawings and specifications, refer to Drg. No.00 for Structural Specification
2. Except where specific dimensions are shown on these drawings, all setting out shall be in accordance with the architects drawings and specifications. Any discrepancy between these drawings and the architects drawings or the actual site dimensions should be referred to the engineer immediately and confirmed in writing. The contractor is responsible for the accuracy of all dimensions and the setting out.
3. Do not scale from these drawings. If in doubt, ask.
4. All dimensions are in millimetres unless noted otherwise.
5. All proprietary materials to be in accordance with manufacturers specifications and to Engineer's approval.
6. All proprietary CDP elements shown on the drawings should be treated as indicative and are subject to detailed design by specialist manufacturer/supplier. The contractor should make suitable allowance for third party design/detailing and potential impact on the permanent work design.



S.H.E (Safety, Health & Environmental) Information in accordance with CDM regulations 2015. The following notes refer to Hazards/Risks considered in addition to those normally associated with this type of work. Numbered references correspond to the list below:

1. **Attenuation Crate**
The crate has not been designed to accommodate vehicle loading from vehicles. Loads in excess of this, including those from lifting equipment outriggers, must not be placed directly above or immediately adjacent to the crate. Loads must be positioned such that they do not impose any vertical or lateral loading onto the crates.
2. **Ground Conditions**
Refer to the site investigation report for an overview of ground conditions, and be aware that some follow up testing may be required.
3. **Temporary Works**
The design of any temporary works is the responsibility of a suitably qualified temporary works engineer working on behalf of the contractor.
4. **Works Within Public Highway**
The contractor should obtain any required permissions from the local authority to undertake works within the public highway, and comply with any requirements set by that authority.
5. **Tree Roots**
Refer to detailed Arboricultural reports for full details. Be aware it may be necessary to have an arboriculturalist present to act as a watching brief.



TRIAL HOLE REQUIRED AT CORNER OF HALL PRIOR TO ROAD CONSTRUCTION TO EXPOSE WALL CONSTRUCTION AND FOUNDATION DEPTH. RESULTS TO BE CONFIRMED WITH ENGINEER.

PO1	11.08.25	Preliminary Issue	JLB
Rev	Date	Revision Description	Issued by

Drawing Status: **S4 - Suitable for Approval**

GODSELL • ARNOLD
PARTNERSHIP LTD
 Consulting Civil and Structural Engineers
 7 Arrowsmith Court, Station Approach
 Broadstone, Dorset, BH18 8AX
 Telephone: 01202 600 900 Website: www.gapitd.net

Client: **Chickerell Town Council**
 Project: **Chickerell Town Hall**
 Drawing Title: **Proposed Site Levels**
 Sheet 2 of 2

Scale: 1:100@A1 / 1:200@A3 Drawn: JLB Checked:
 Project-Originator/Zone-Level-Type/Role Drawing No.:
25039-GAP-XX-XX-DR-C 9101 PO1