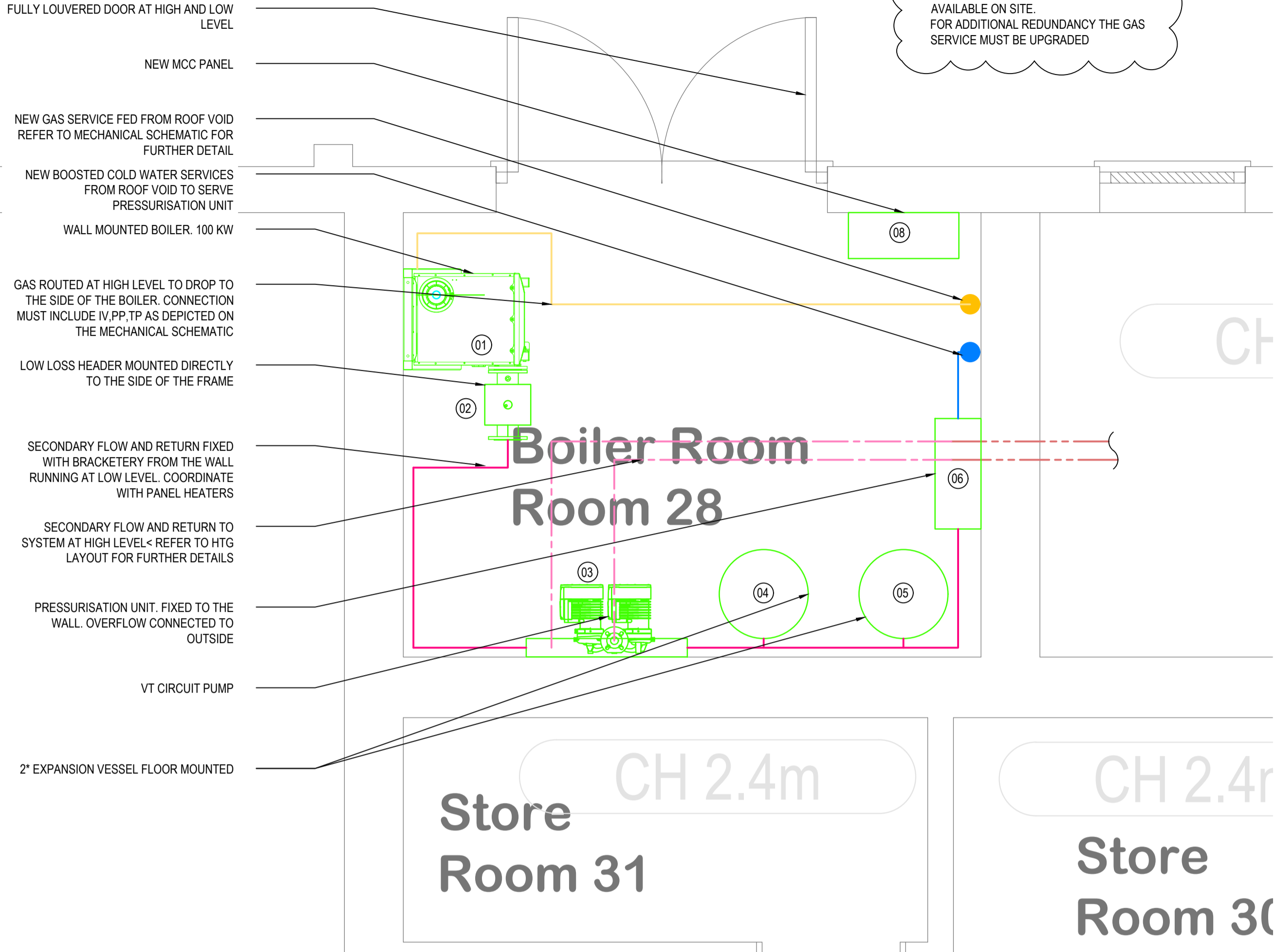


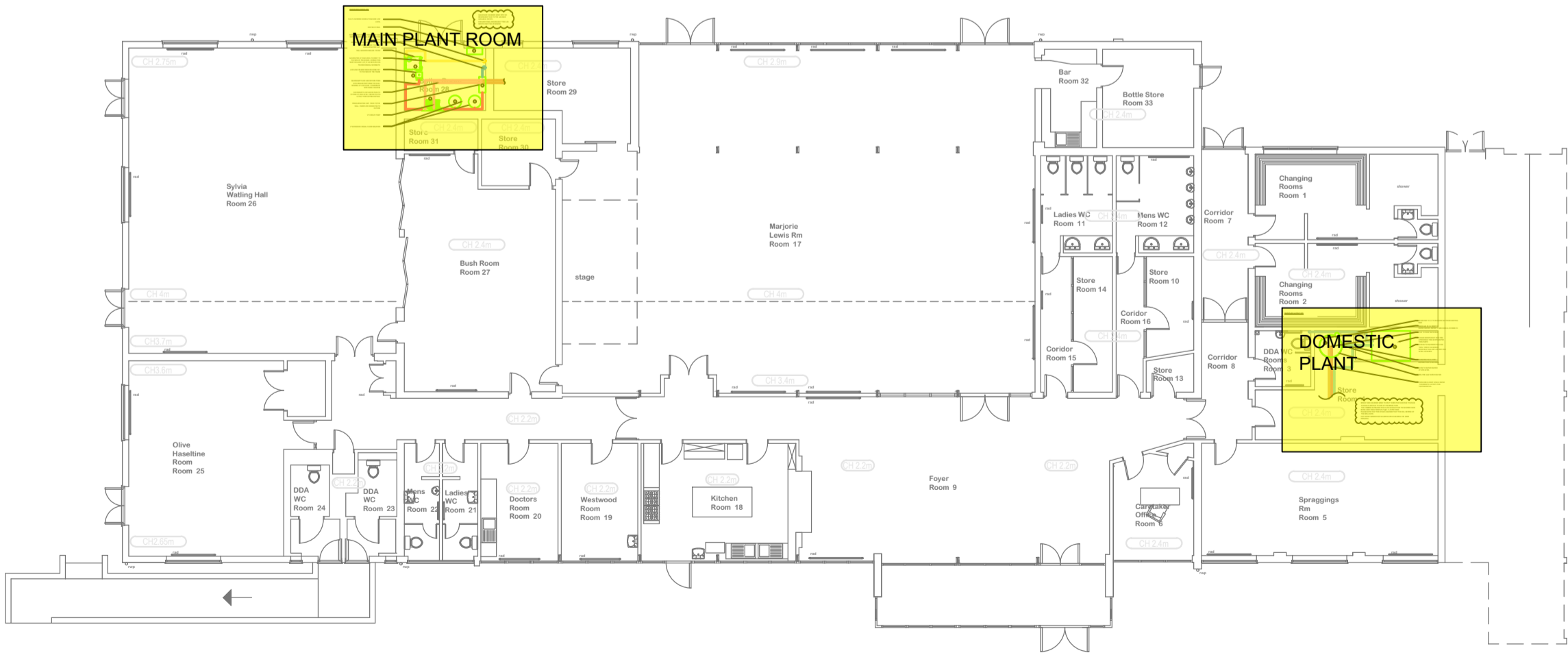
MAIN PLANT LAYOUT 1/25



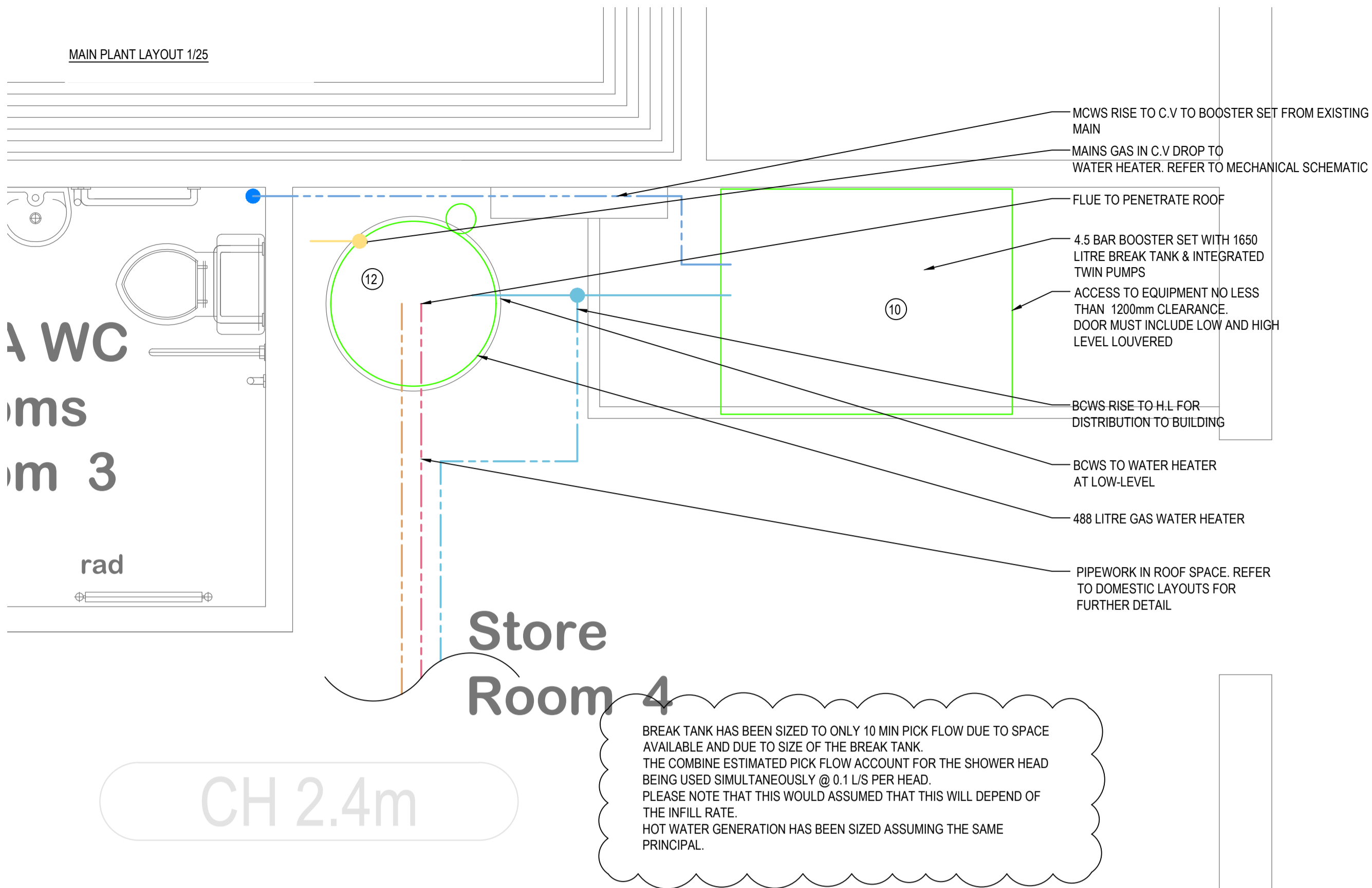
NOTES:

- THIS DRAWING IS TO BE READ IN CONJUNCTION WITH ALL ASSOCIATED SPECIFICATIONS AND OTHER DESIGN TEAM MEMBERS INFORMATION.
- ALL DETAILS REPRESENT THE PROPOSED SOLUTION AND IS SUBJECT TO FURTHER DEVELOPMENT WITH THE WIDER TEAM.
- EXISTING AREA WHERE NO WORK HAS BEEN DESCRIBED MUST BE RETAINED WITH ALL THE SERVICES BEING RECONNECTED

FLOOR PLAN 1/200



MAIN PLANT LAYOUT 1/25



MATERIAL SCHEDULE

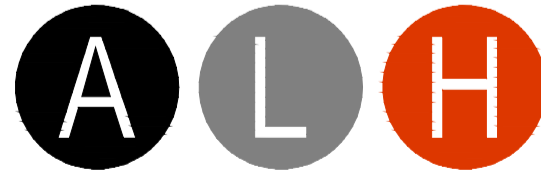
Reference	Main Activity	Related Drawing	Designation	Manufacturer	Model	Manufacturer Ref	NOTE
01	Plant Refurbishment	50-04	Gas Boiler	IDEAL	EVOMAX 2 100 kW		WITH FRAME SYSTEM
02	Plant Refurbishment	50-04	Low-Loss Header	IDEAL			TO MATCH BOILER
03	Plant Refurbishment	50-04	Circulation Pump	Grundfos	Magna 1 D 40-150 F		
04	Plant Refurbishment	50-04	EXPANSION VESSEL	FLAMCO	75 LITRES		RATED FOR 3 BAR
05	Plant Refurbishment	50-04	EXPANSION VESSEL	FLAMCO	75 LITRES		RATED FOR 3 BAR
06	Plant Refurbishment	50-04	Pressurisation Unit	Mikrofill	Mikrofill 3		
07	Plant Refurbishment	50-04	Magnetic Filtr	VEXO	XPOT6		
08	Plant Refurbishment	50-04	BMS panel	NA			
09	Plant Refurbishment	50-04	Secondary Return Pump	Grundfos	Magna 1 25-50 N		
10	Plant Refurbishment	50-04	Booster Set + BREAK TANK	DUTY POINT	SCUBA TANK	WX2-9060-1650	2.58 l/s @ 4.5 BAR
11	Plant Refurbishment	50-04	Water Conditioner	Hydrotec	HY_MAG DN50		2.58 l/s
12	Plant Refurbishment	50-04	Gas Fired Heater	Lochinvar	ECH87-480GCE	ECH87-9060-1250	

TENDER ISSUE

T2	TENDER ISSUE	AC	PD	AJS	AUG 21
T1	TENDER ISSUE	AC	PD	AJS	JULY 21
P1	PRELIMINARY ISSUE	AC	PD	AJS	JULY 21
REV	DESCRIPTION	BY	CHK	APP	DATE

Client

HELLEDSON PARISH COUNCIL



GREENRIDGE, LITTLEFIELDS, DEREHAM, NORFOLK NR19 1BQ
Tel// Fax: 01362 652704
email: andrew@alhdesign.co.uk

Project:

HELLEDSON COMMUNITY CENTRE
WOODVIEW ROAD, HELLEDSON
NORFOLK, NR6 5SR

Drawing Title:

MECHANICAL SERVICES
PLANT LAYOUT

Scale @	A1	Drawn	Date	Checked	Date	Approved	Date
1:25	AC	AC	July 21	PD	July 21	AJS	July 21
Project No.	21027	Type	ML	Drawing No.	50-04	Revision	T2