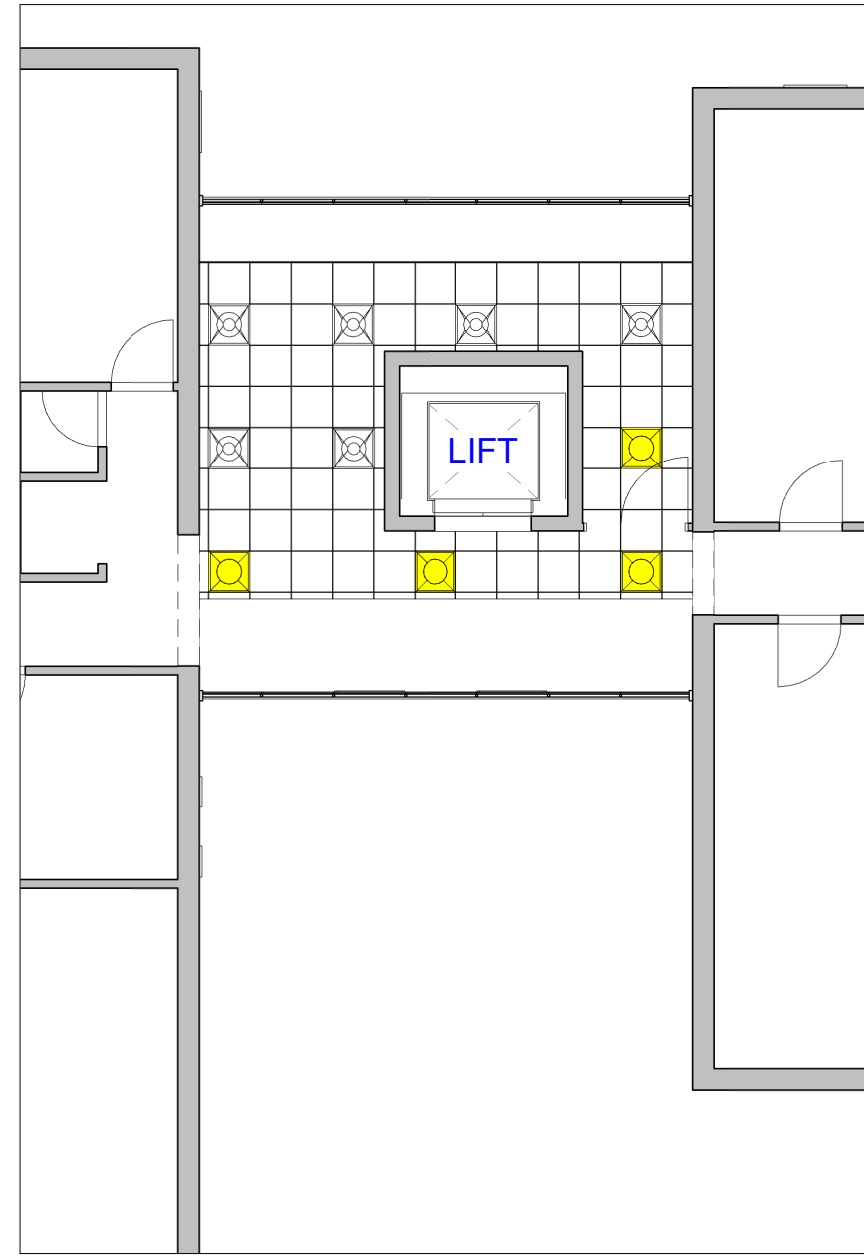


1 GF Existing Lighting
1 : 100



3 1st Floor Existing Lighting
1 : 100

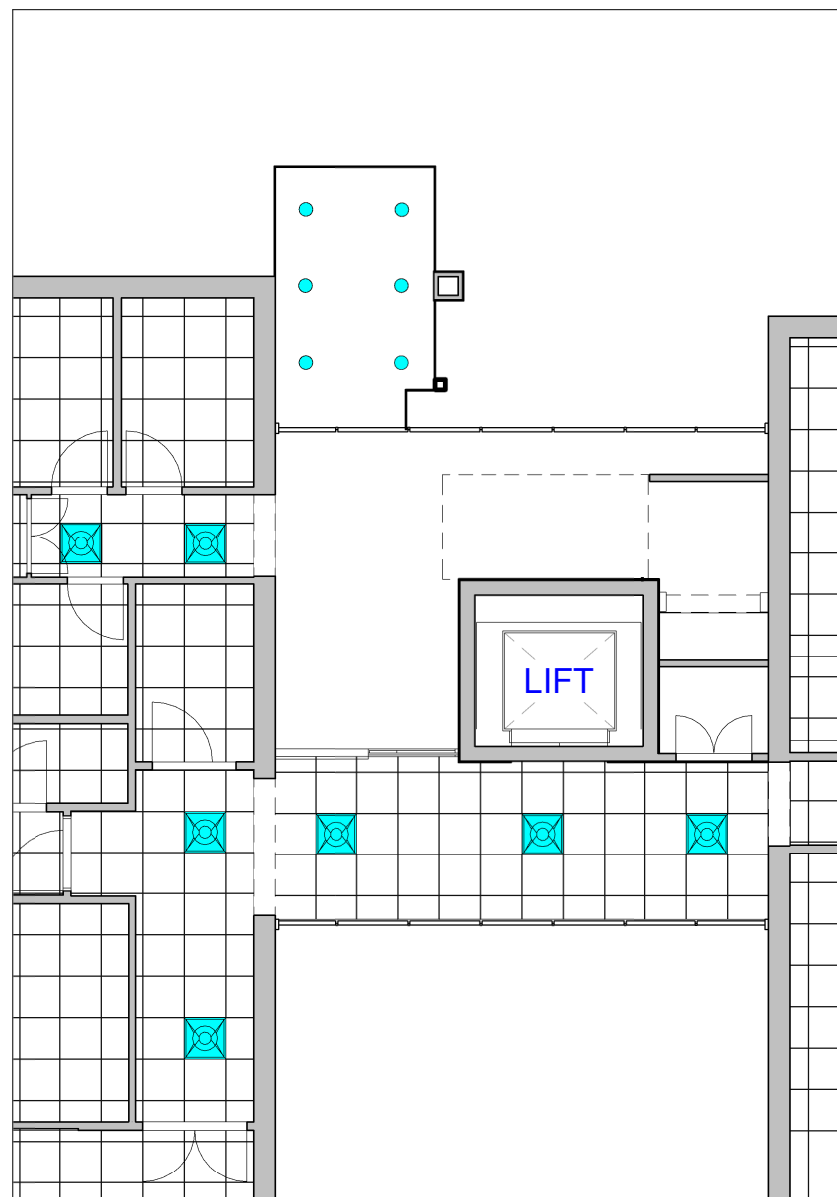
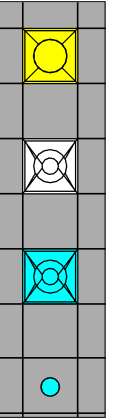
KEY

Old florescent lighting to be removed and replaced by new LED panel lighting.

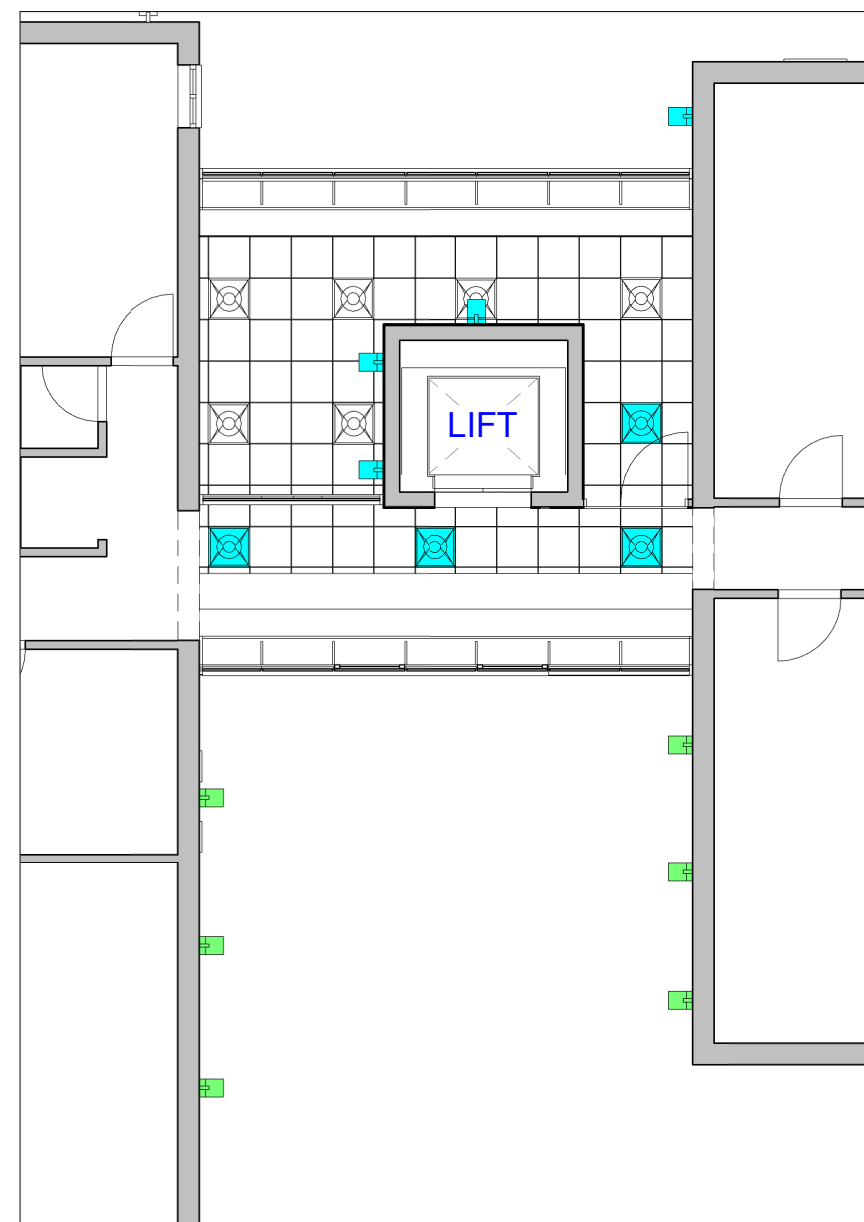
Existing LED panel light

New LED panel light to match existing

New LED spot light.
Thorn Lighting - CHALICE 190H
ALU 1x42W TC-TEL HF E3



GF - Notes:
6 new spot lights going into new canopy.
Replace 7 florescent lights with LED panel lighting.



FF - Notes:
Replace 4 florescent lights on landing with LED panel lighting.

Wall fix 3 x L.9202N - Mini-Look Applique wood double emission, finished in burnished bronze.

Wall fix 7 x L.9201N - Mini-Look Applique wood single emission, finished in burnished bronze.



Directorate of Housing Leisure & Property Services
Broxtowe Borough Council
Foster Avenue, Beeston
Nottingham
NG9 1AB
Tel: 0115 917 7777
email: env@broxtowe.gov.uk

PROJECT:
Richmond Court Refurbishment

TITLE:
Lighting_Floor Plan

SCALE: As indicated Date: 21/11/16

Drawn By: MR Checked By: CDM Checked by:

DWG No: CW16.008.07