

Through-Fixings Preliminaries

Components

Please check items delivered against delivery note and these instructions. Please notify Bushboard of any discrepancies within 48 hours.



16mm dia.
M6 Sleeve Nut
(Qty 6)

For 19mm
pilasters



M6 x 20mm CSK
Pozidrive machine
screw
(Qty 6)

For 13mm
pilasters



M6 x 12mm CSK
Pozidrive machine
screw
(Qty 6)

Introduction

The cubicle through-fixing pack is designed to accommodate 19mm and 13mm outward opening pilaster situations.

Prerequisites

These instructions should be read in conjunction with the installation instructions for the cubicles being installed.

Safety

We advise the use of eye and ear protection whenever power tools are utilised.

Toolbox



Cordless drill



Screwdrivers



Hammer/
Mallet



Drill Bits



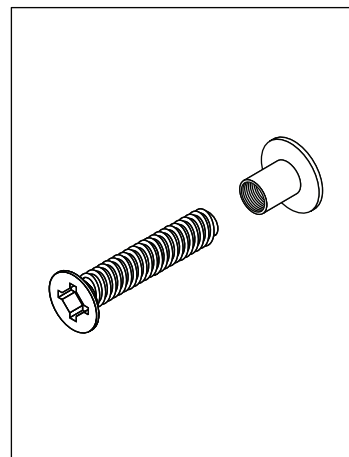
Personal
Protection

Cautions

When drilling through pilaster cubicle components ensure that there is NO MATERIAL BREAKOUT on any face.

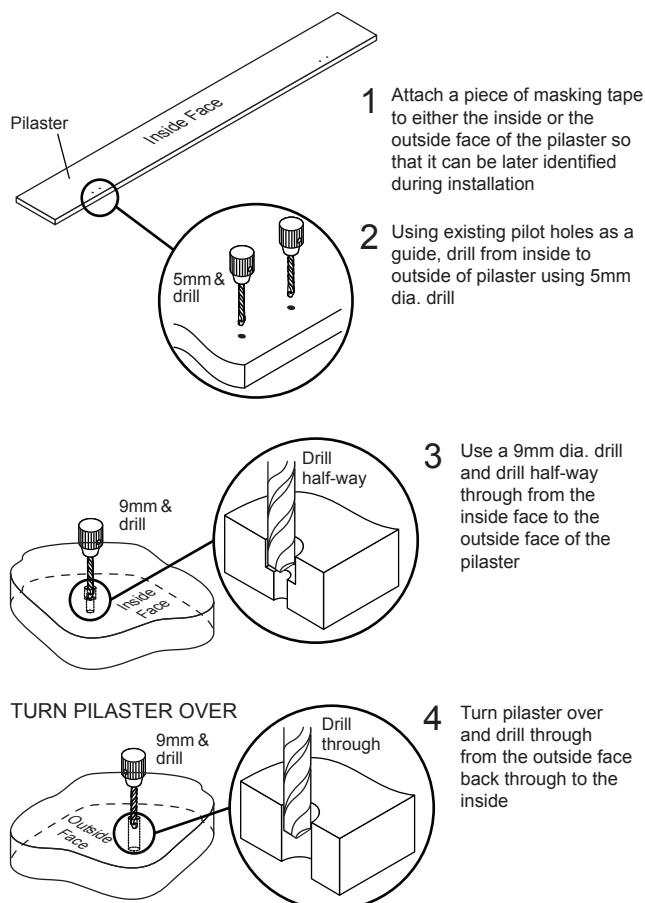
Bushboard have a policy of continuous improvement and reserve the right to amend the information in this publication without notice.

Through-Fixings Installation Instructions



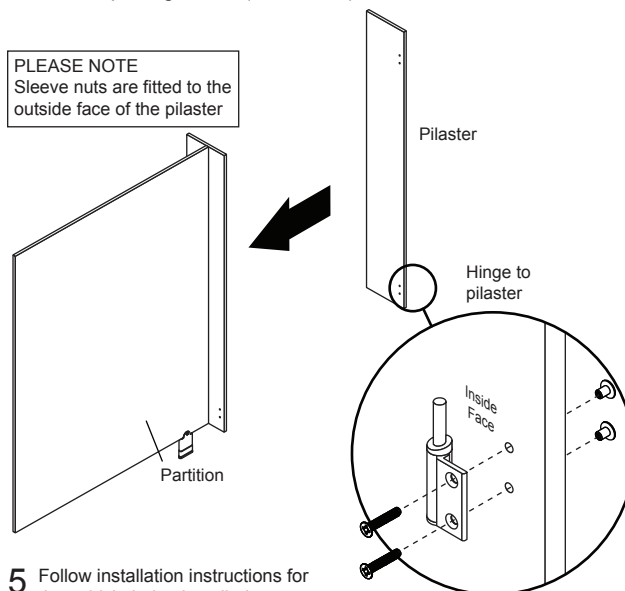
bushboard

Through-Fixings Installation Outward Opening Doors



Through-Fixings Installation Outward Opening Doors (Continued)

PLEASE NOTE
Sleeve nuts are fitted to the outside face of the pilaster.



bushboard

Unit 1400 1st Floor Montague Court
Kettering Parkway
Kettering Venture Park
Kettering
Northants
NN15 6XR

Tel: 01536 533 620
Fax: 01536 533 648

628-23-06
(07/10)