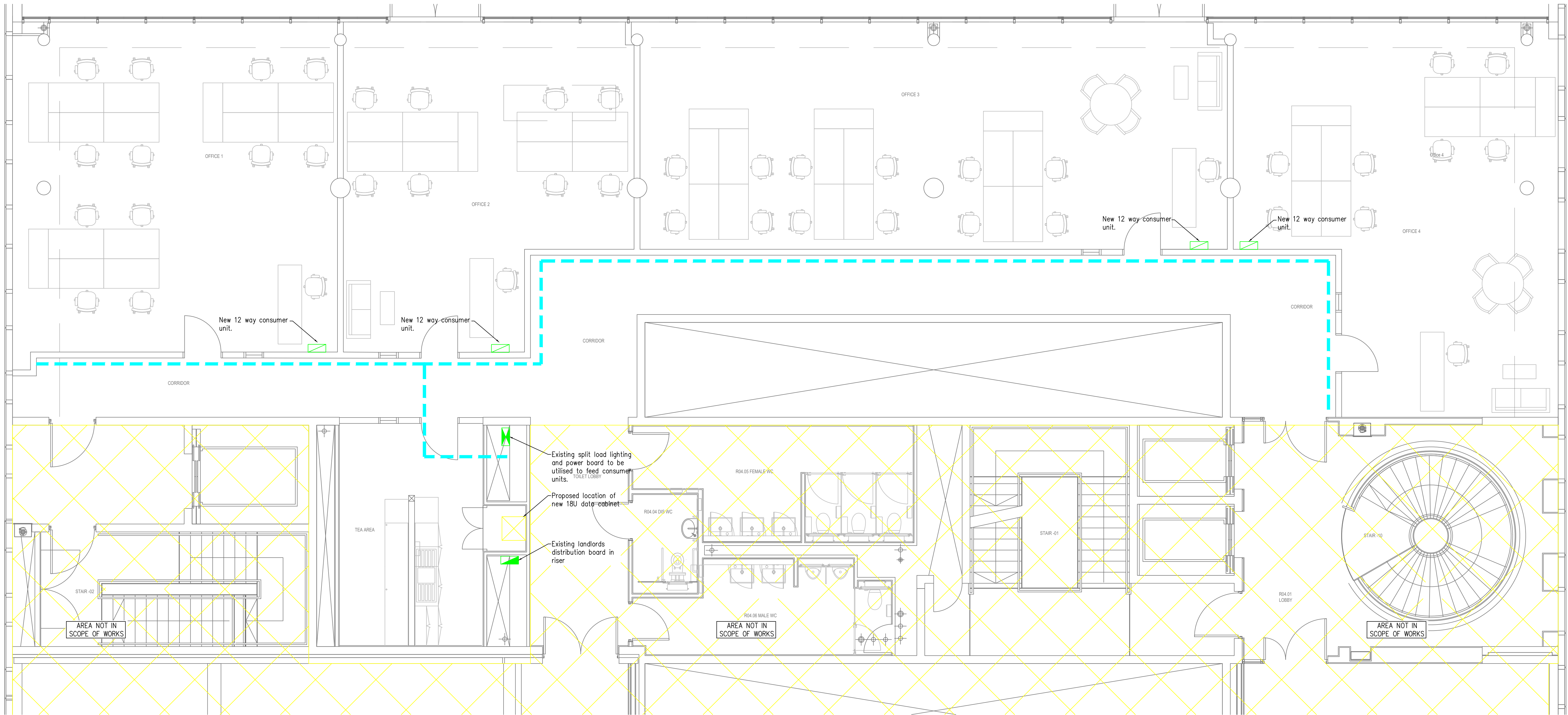


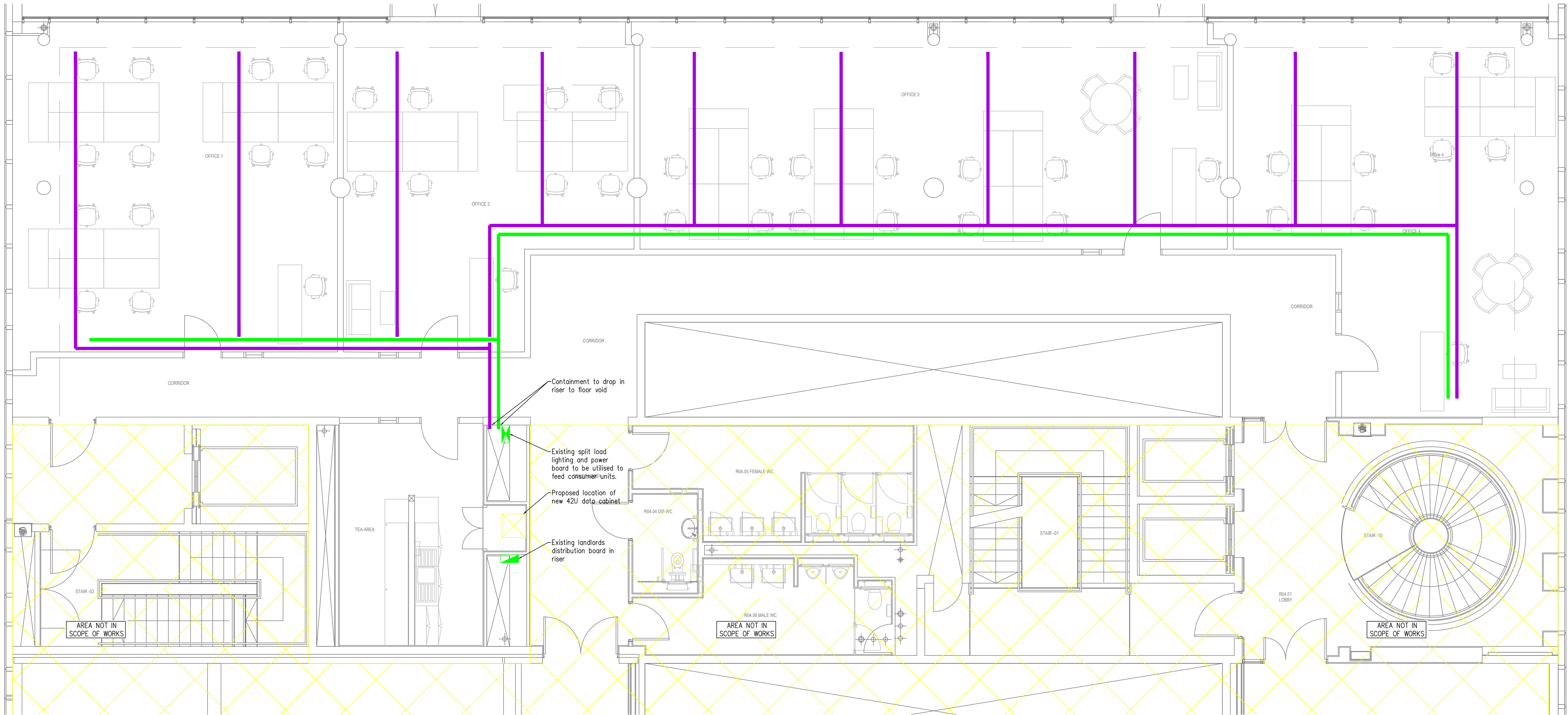
NOTES

1. THIS DRAWING IS TO BE READ IN CONJUNCTION WITH ALL RELEVANT ARCHITECTURAL & STRUCTURAL DRAWINGS.
2. THIS DRAWING IS TO BE READ IN CONJUNCTION WITH ALL RELEVANT BUILDING SERVICES DRAWINGS & THE RELEVANT SECTIONS OF THE SPECIFICATIONS & SCHEDULES.
3. THIS DRAWING IS NOT TO BE SCALED.
4. ALL DIMENSIONS ARE IN mm UNLESS OTHERWISE STATED.
5. CONTAINMENT ROUTES ARE INDICATIVE ONLY. CONTRACTOR TO DETAIL SIZES AND DETERMINE EXACT ROUTES

LEGEND OF DISTRIBUTION & ISOLATING DEVICES SYMBOLS	
SYMBOL	DESCRIPTION
	SWITCHPANEL
	DISTRIBUTION BOARD
	CONSUMER UNIT
	COMBINED LIGHTING & POWER DISTRIBUTION BOARD
	ELV CABLE TRAY
	UNDER FLOOR DATA BASKET
	UNDER FLOOR SMALL POWER TRAY



INDICATIVE HIGH LEVEL CONTAINMENT LAYOUT



INDICATIVE LOW LEVEL CONTAINMENT LAYOUT

T3	19.01.17	TENDER ISSUE	TW
T2	18.01.17	TENDER ISSUE	TW
T1	10.01.17	TENDER ISSUE	TW
PI	02.12.16	PRELIMINARY ISSUE	NP
REV	DATE	DESCRIPTION	BY

BSD Building Services Design
Consulting Engineers
Website: www.buildingservicesdesign.co.uk
1 Brisbane House, Corbygate Business Park,
Priory Way Road, Corby, Northamptonshire, NN17 5JG
Tel: (01536) 403304, Fax: (01536) 403838
Email: corby@buildingservicesdesign.co.uk
Offices in London, Cambridge, Birmingham, Manchester, and Leicester

Client:
CORBY BOROUGH COUNCIL

Project:
**CORBY CUBE FOURTH FLOOR
OFFICE**

Title:
**ELECTRICAL SERVICES
PROPOSED FOURTH FLOOR
INDICATIVE HIGH LEVEL AND
LOW LEVEL CONTAINMENT LAYOUT**

Scale at A3:	Date:	Designed:	Drawn:	Design:
1:50	NOV 16	MR	NP	CAD:
Drawing No:	161190/E/2100		Rev:	T3

TENDER