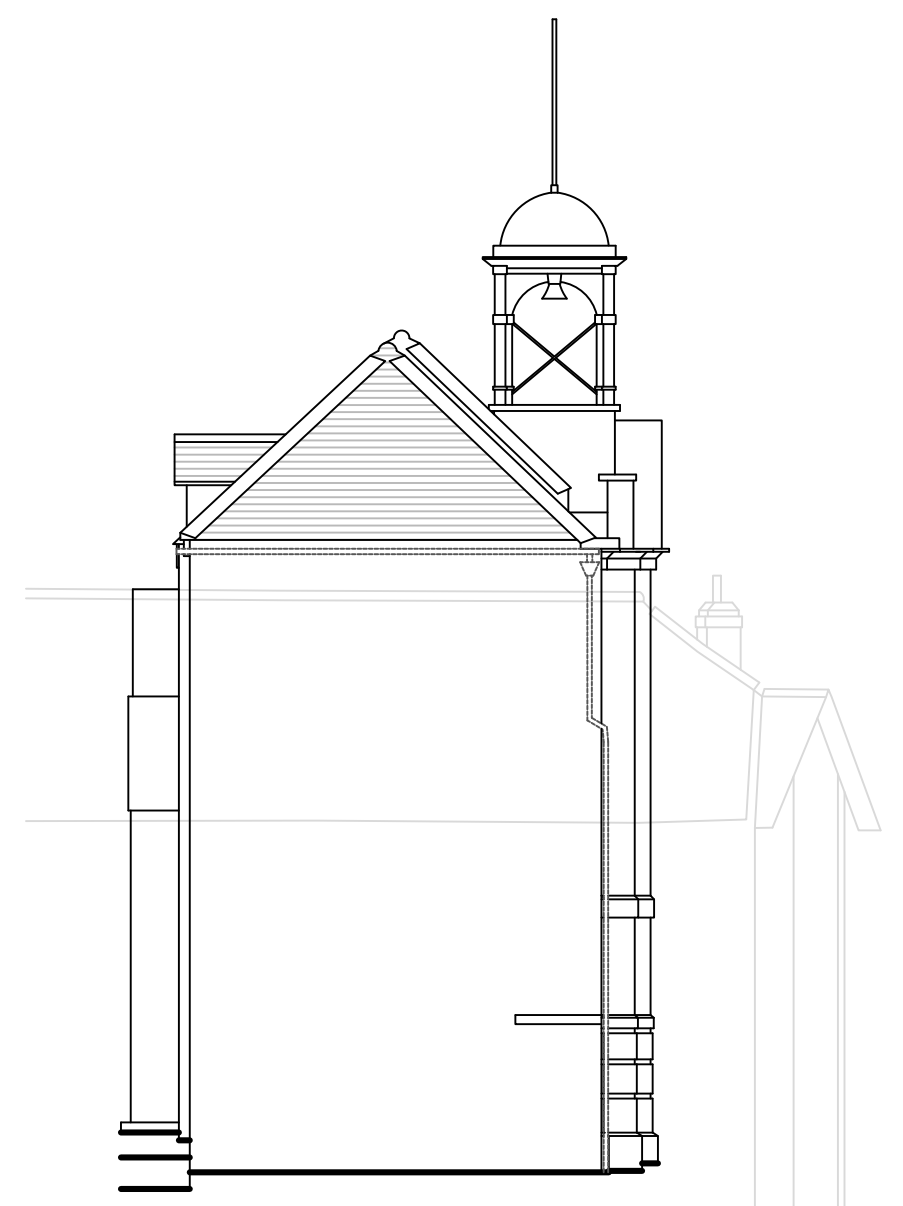
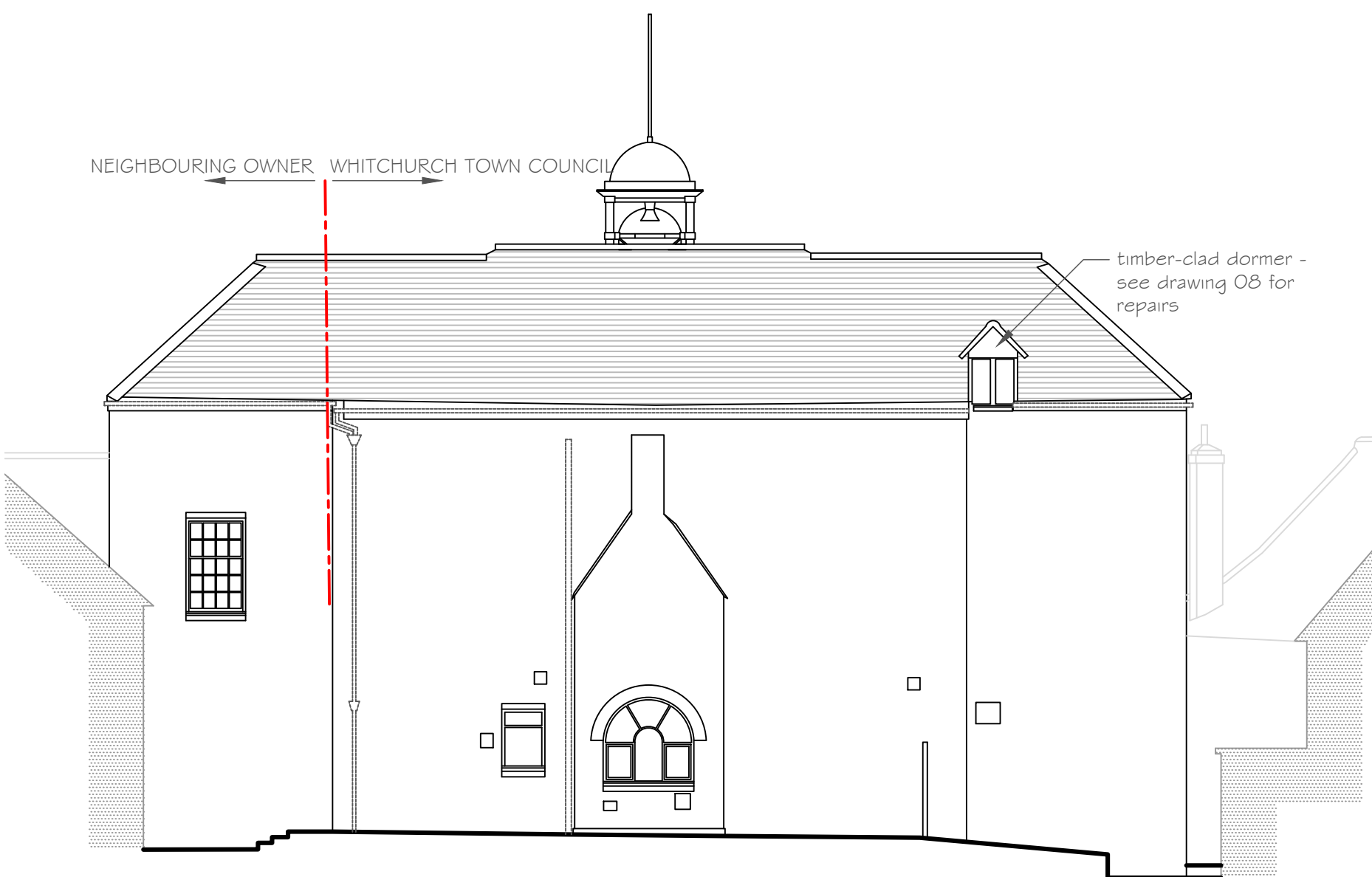


DETAIL A

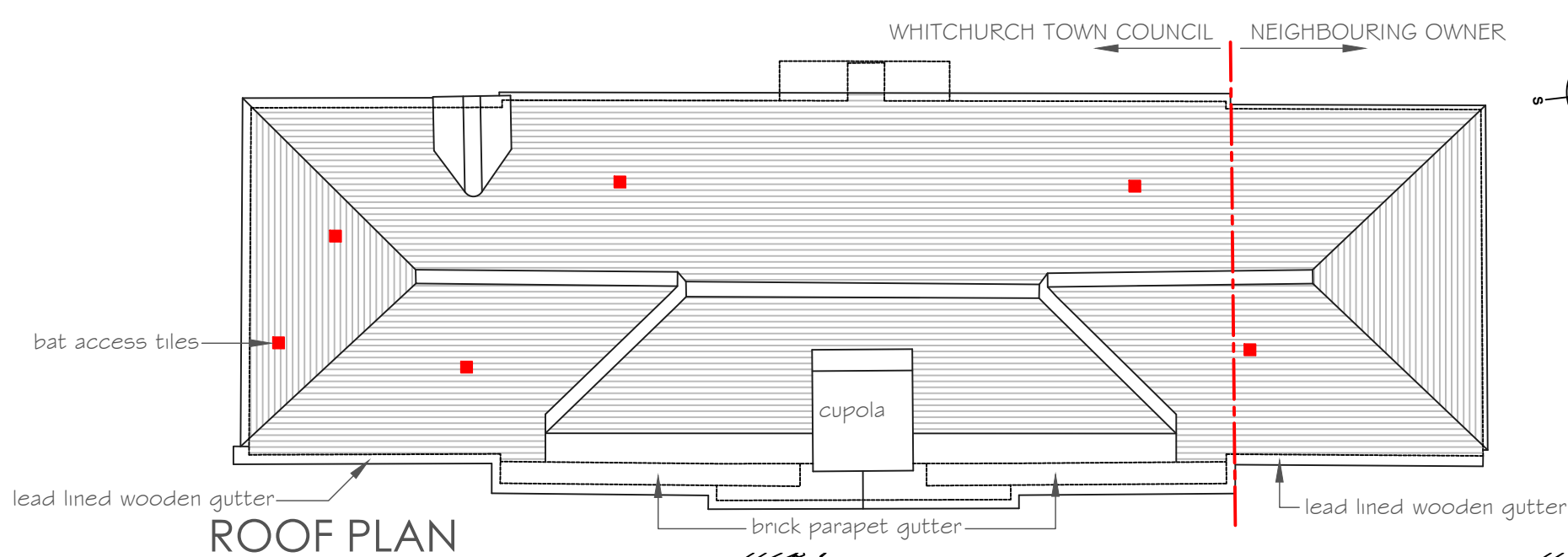
1:5

at each end existing lead-lined timber parapet gutter discharges to hopper head; prone to overflow so to be fitted with overflow/warning pipe comprising 25 mm diameter UPVC pipe enclosed with soldered lead sleeve lead; positioned to shed water clear of front wall and act as a warning pipe.



WEST ELEVATION

SOUTH ELEVATION



PROPOSED WORKS

Entire roof (in both ownerships) to be re-covered with plan clay tiles with matching bonnet hips and half round ridge tiles, all as existing profiles. Tiles to be a blend of colours to reflect existing, to approved samples.

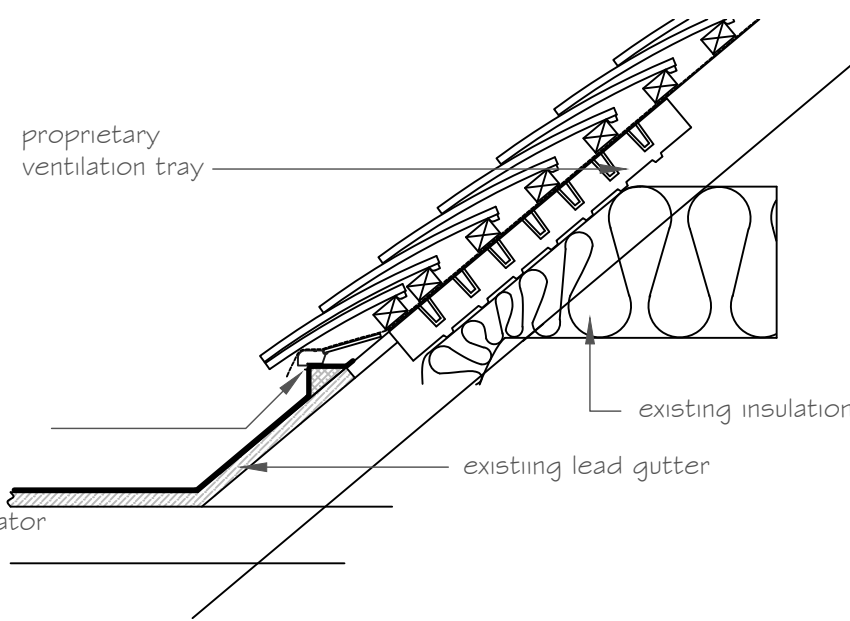
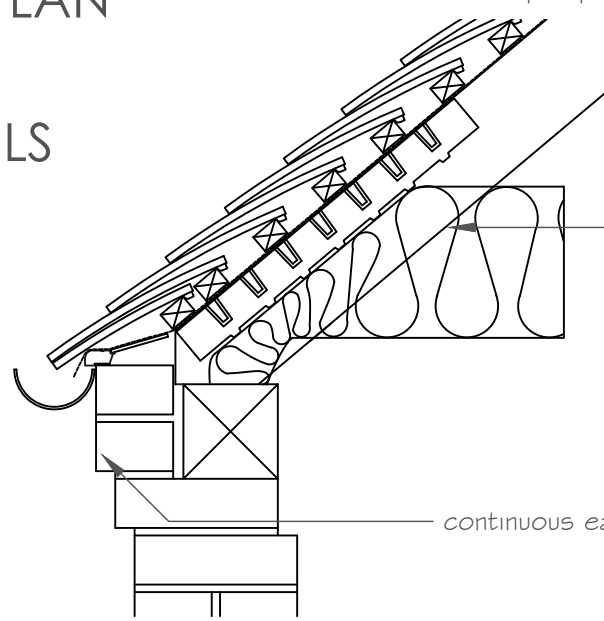
In accordance with bat report, underlay to be non-breathable bitumen 1F felt. Continuous eaves ventilation to be introduced to roof void (already insulated at ceiling level) as shown on detail; will be concealed behind parapet on principal, east elevation and by gutters elsewhere.

Bat access tiles are to fitted where shown on this drawing (as required by the bat report); to be as supplied by roof tile supplier to match selected/approved tiles.

All leadwork to be retained; only very minor, local repairs to be carried out if found to be necessary using same grade of lead and traditional details as existing.

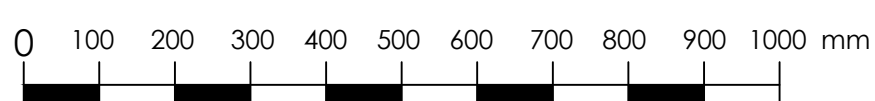
EAVES DETAILS

1:10

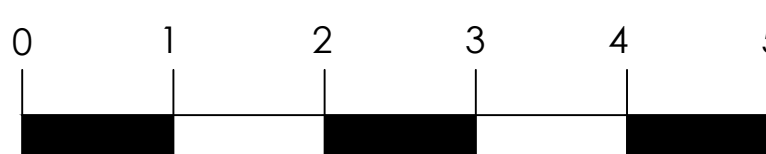


TYPICAL CORBELLED EAVES

DETAIL AT LEAD-LINED PARAPET GUTTERS



metric scale at 1:10



metric scale at 1:50

Rev B: tender revisions

Rev A: as revision clouds, plus minor rearrangements 11/9/20

Rev

Project

Whitchurch Town Hall

Drawing

Re-roofing works

Dwg No.	Scale @ A2	Date
19.19.07/B	1:50 & 1:10	07/20
Issued for:		
LBC		