

Responses to Question raised from Tender Documents

Title: Construction Works to form two Control Rooms in existing Buildings at The Pirbright Institute

Project: Conversion and Alterations to Building Management System Control Rooms

Date: 3rd May 2023

Background

The tender documents were issued on 30th March 2023. The following changes and amplifications have been discussed with tenderers and this document formalises the changes.

1. Principle Contractor

For the avoidance of doubt all tenderers will be expected to have a competent site manager on site at all times who will be responsible for managing its works and its subcontractors, the construction site and for ensuring the safe management of the works including compliance with the CDM Regulations and other site health and safety requirements under the Health and Safety at Work Act. Scitech will retain the formal role of Principal Contractor.

2. Electrical Specification Sections 5.1 and sections 5.1.3 and Drawings 30687-EL-DR-1501 and 1502

The disinvestment work in MOD2 shown on the drawings noted above and described in the specification have been carried by others and the contractor will not be required to complete this work.

3. Electrical Specification 5.2.2 New Distribution Boards

Distribution Board 1 (Fed from East Feeder Pillar) Manufactured by Schneider Electric Ltd, Model: Acti9 Isobar B type (SEA9BPN8) will be installed by others and mounted on a temporary framework in the Intake Room in MOD2. It will be connected to the East Feeder Pillar and be live and tested when the contractor starts work. It will be mounted on a temporary frame so that the contract can carry out the modification works required to the building walls. Temporary power can be taken from this supply.

In the Plowright Building temporary power will be available from the existing circuits in the building.

4. Electrical Specification Section 5.7

Please see a revised Section 5.7 below making it clear that the Contractor should install the data wiring system.

The Contractor shall supply and install a new IT voice data wiring system in category 6 UTP copper cable installed within dedicated cable basket/tray and conduit containment systems, terminating in RJ45 line jack outlets as indicated on the drawings.

Final data wiring connections to the existing IT rack switches in the Intake room MOD 2 shall be terminated and Dressed by Contractor.

Final data wiring connections to the existing IT rack switches in Plowright shall be terminated and Dressed by Contractor

The Electrical Contractor shall provide and install the new containment for the new IT/Data installation and back boxes in the area scope of this specification. The terminations in both ends of the cable, testing and commissioning shall be carried out by the Contractor as directed by the Client (IT dept. engineers).

The scope of the works shall be as follows but not be limited to:

- Provision of new cable containment systems (Electrical Contractor)
- Provision of new data cabling (Electrical Contractor)
- Provision of new data terminations at outlet points (Electrical Contractor)
- Provision of new RJ45 data outlets (Electrical Contractor)
- Labelling of outlets and cables at both ends. (Electrical Contractor)
- Test and Certification (Electrical Contractor)

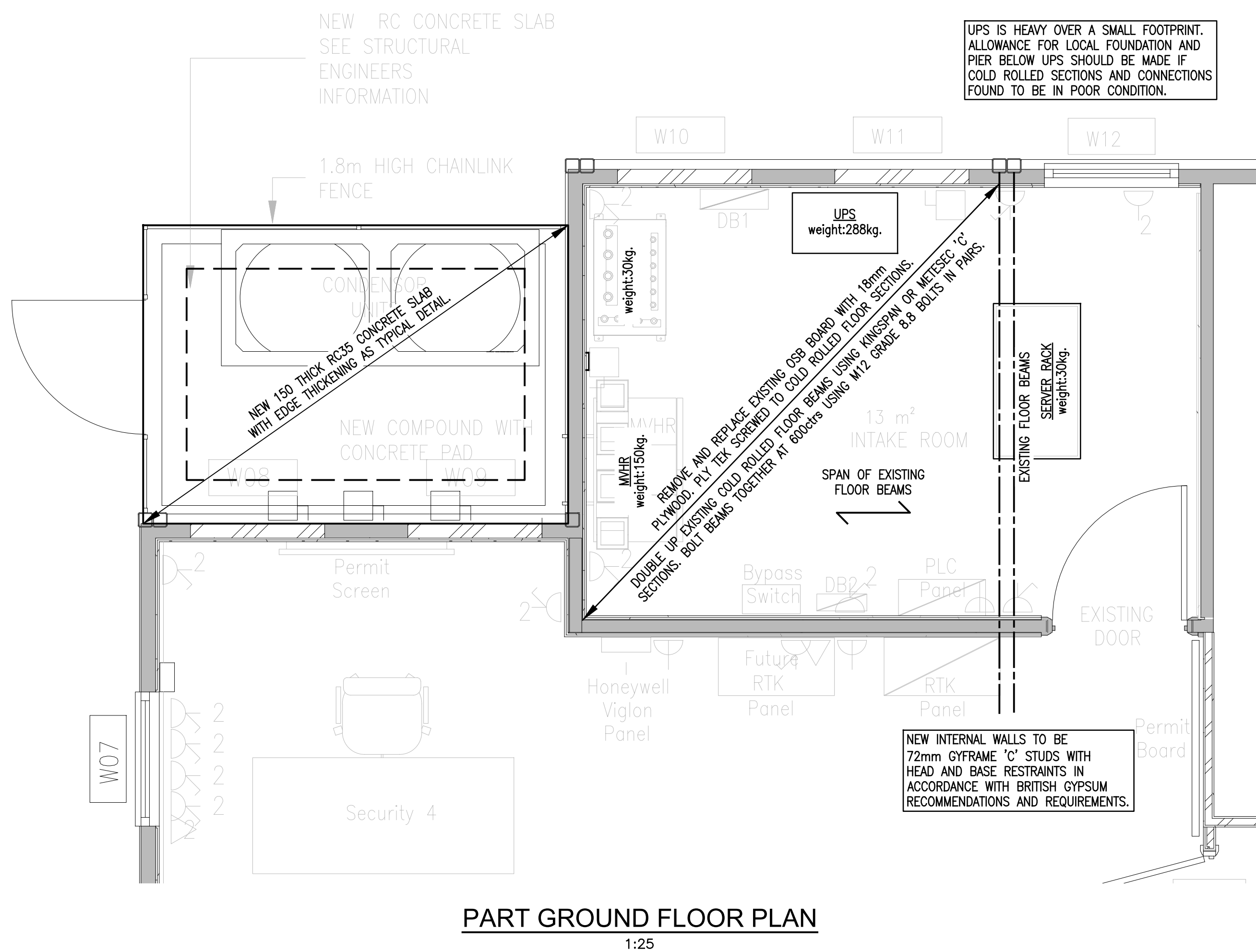
The IT data wiring system shall be carried out in category 6 UTP copper cable installed within dedicated Dado, Basket, and conduit containment systems, terminating in RJ45 line jack outlets.

The reminder of Section 5.7 remains as issued.

5. Structural Drawings

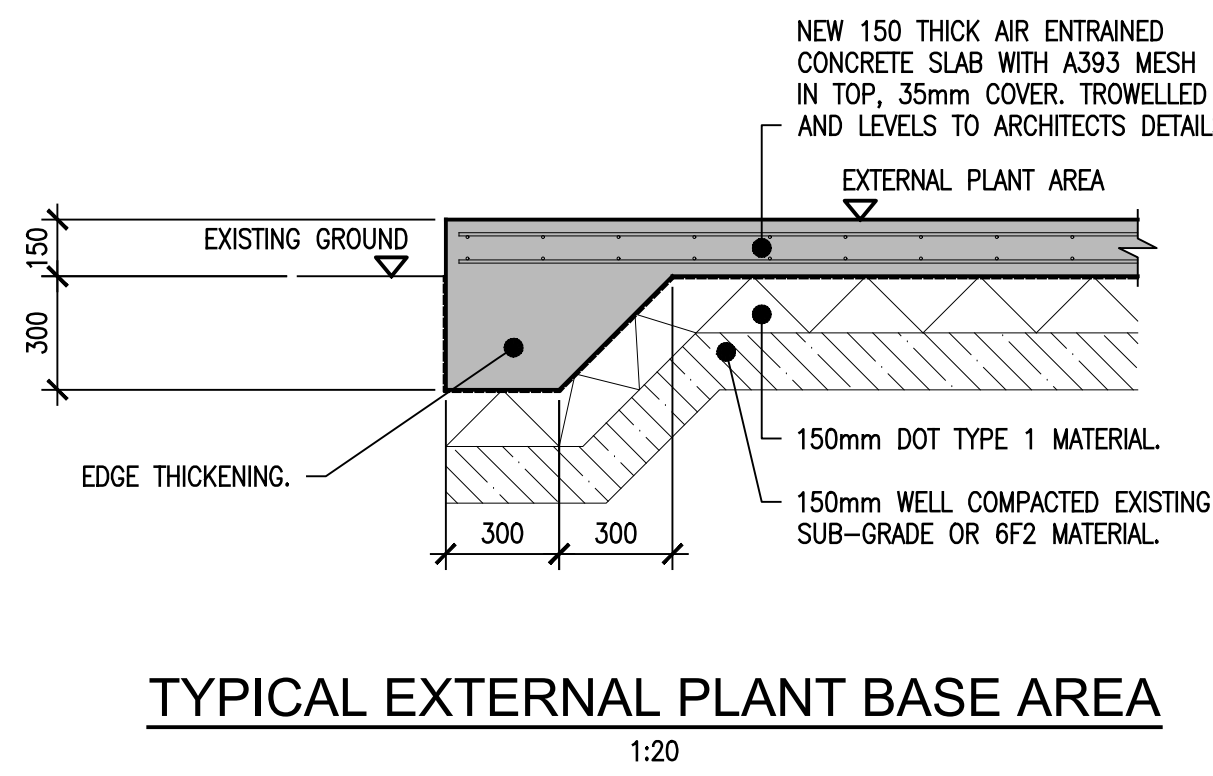
The Structural Engineers drawings Ref Melliss M6663/01 is referred to in the Architectural Specification and it was missed out of the tender pack – it is attached to this document.

MOD2 BUILDING

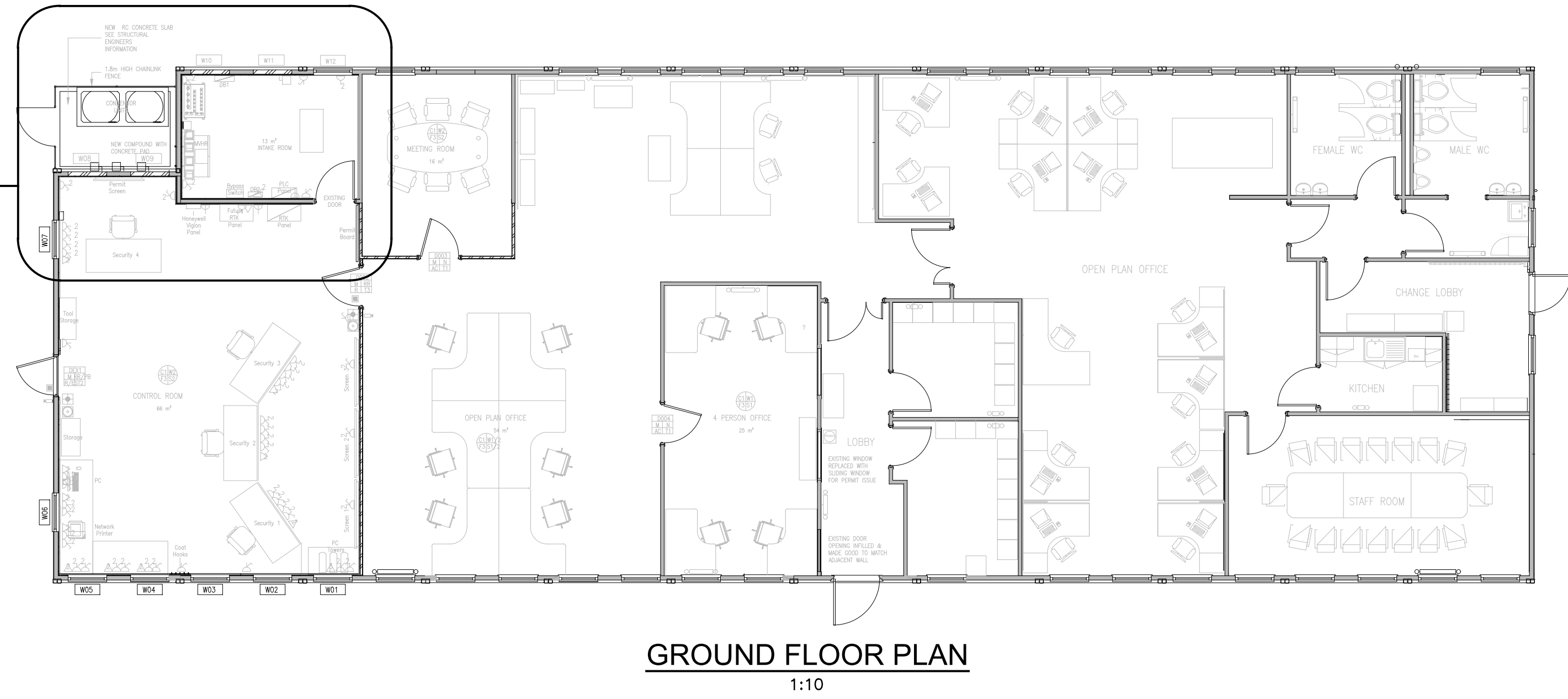


PART GROUND FLOOR PLAN

ASSUMED SUPERIMPOSED LIVE LOAD = 2.5kN/m² FOR
GENERAL OFFICE PLUS 1kN/m² LIGHT WEIGHT PARTITIONS



TYPICAL EXTERNAL PLANT BASE AREA

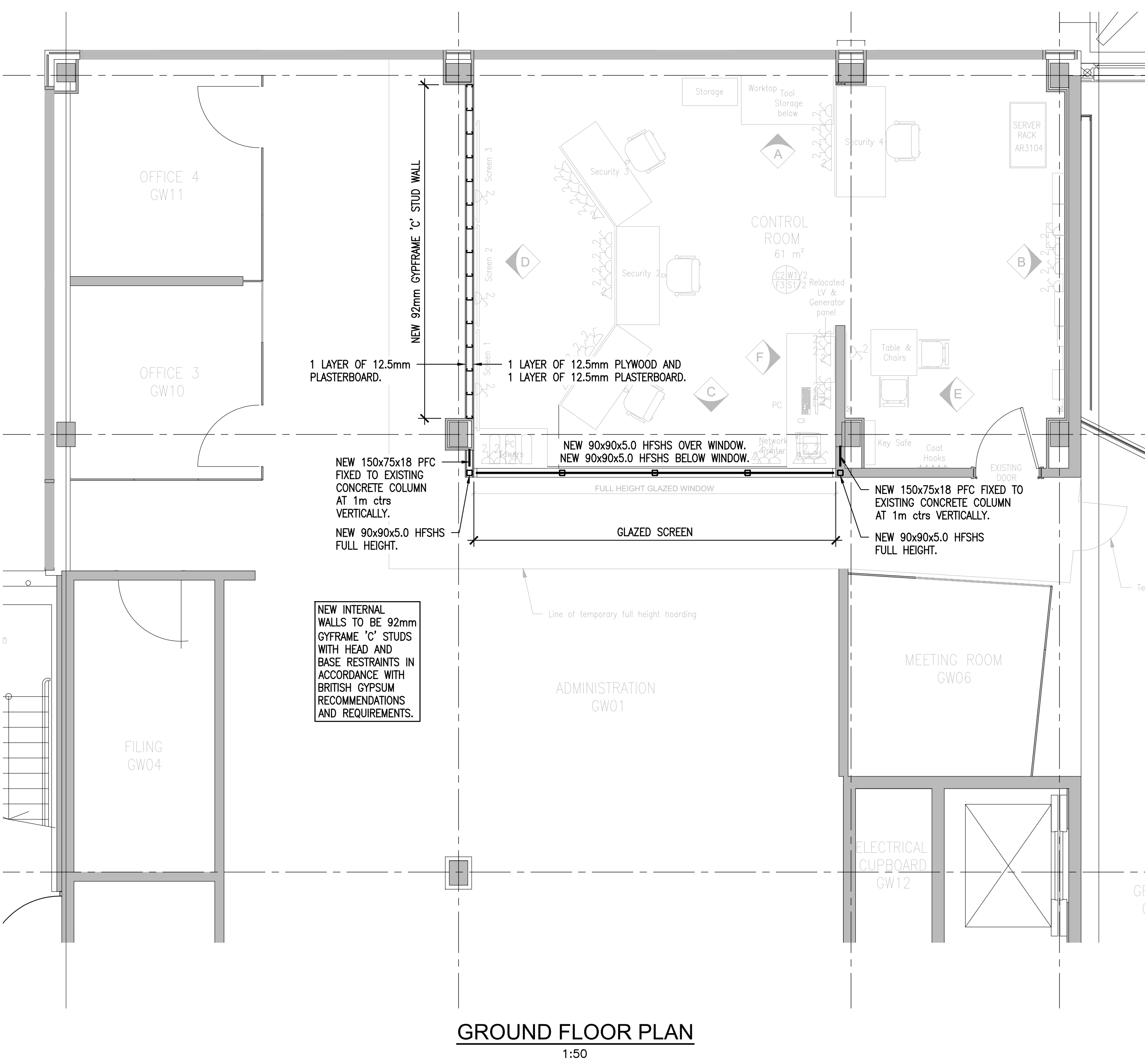


GROUND FLOOR PLAN

1:10

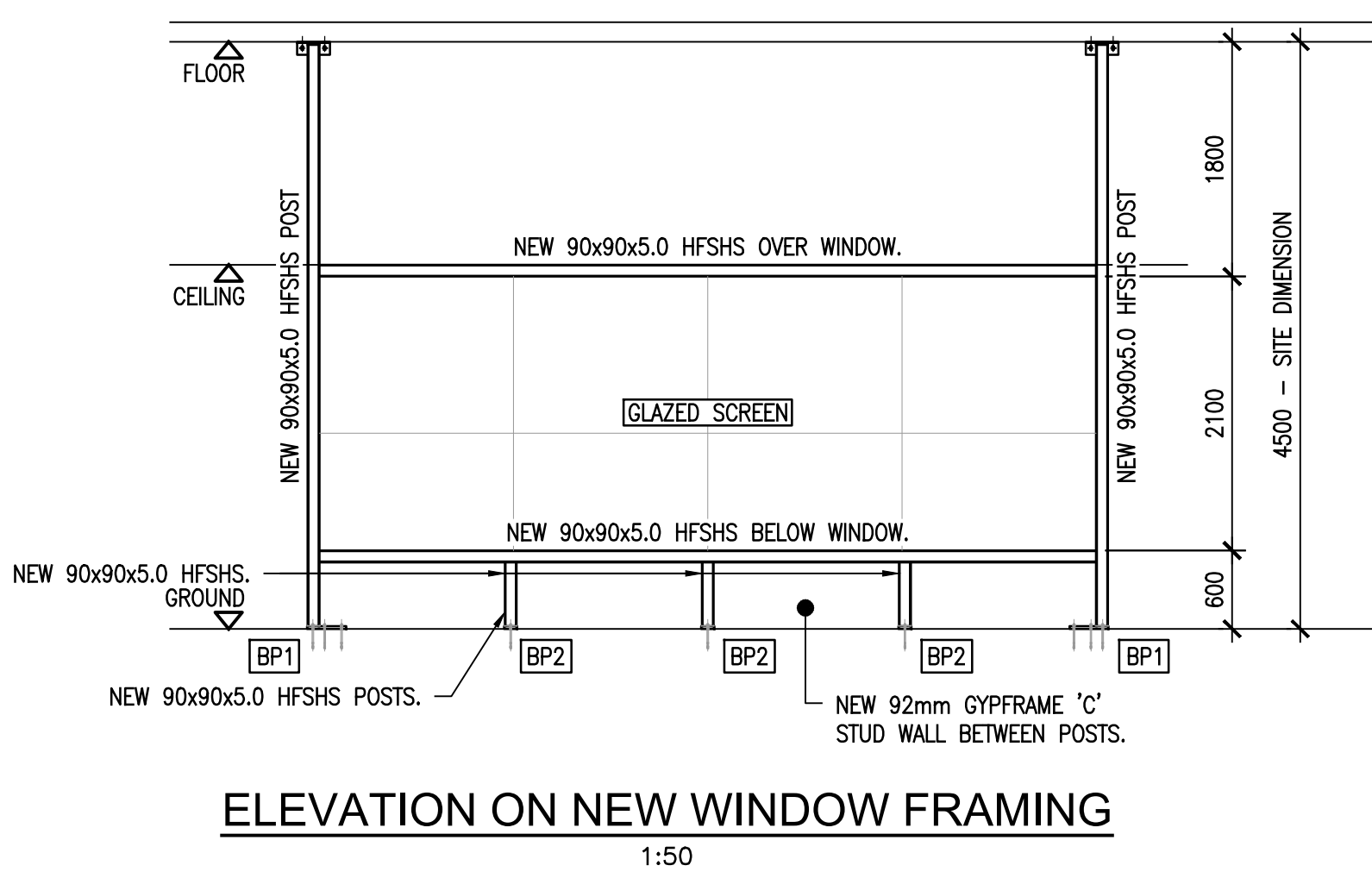
- [illegible]

PLOWRIGHT BUILDING



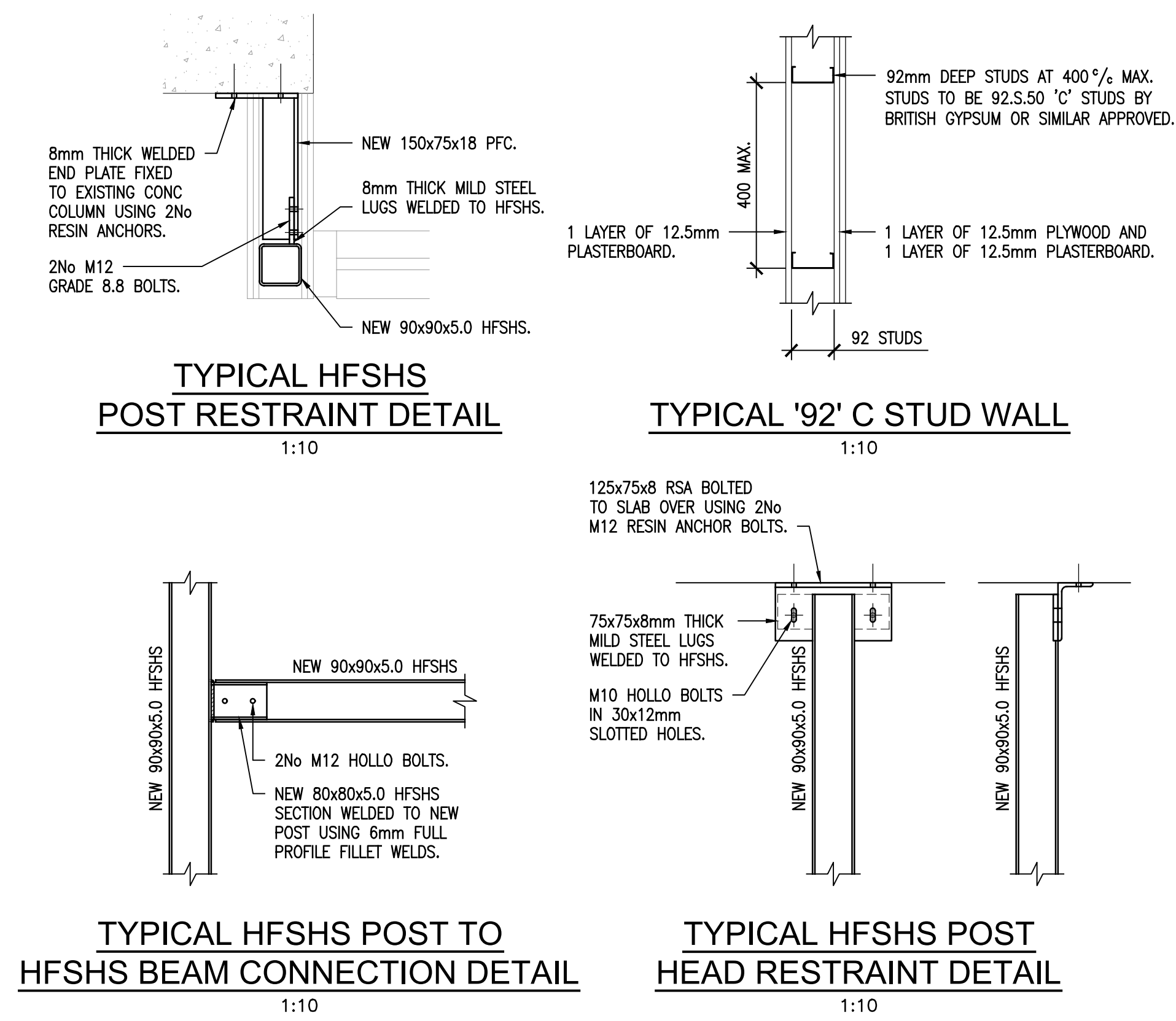
GROUND FLOOR PLAN

1:5



ELEVATION ON NEW WINDOW FRAMING

1:50



TYPICAL HFSHS POST TO HFSHS BEAM CONNECTION DETAIL

1:1

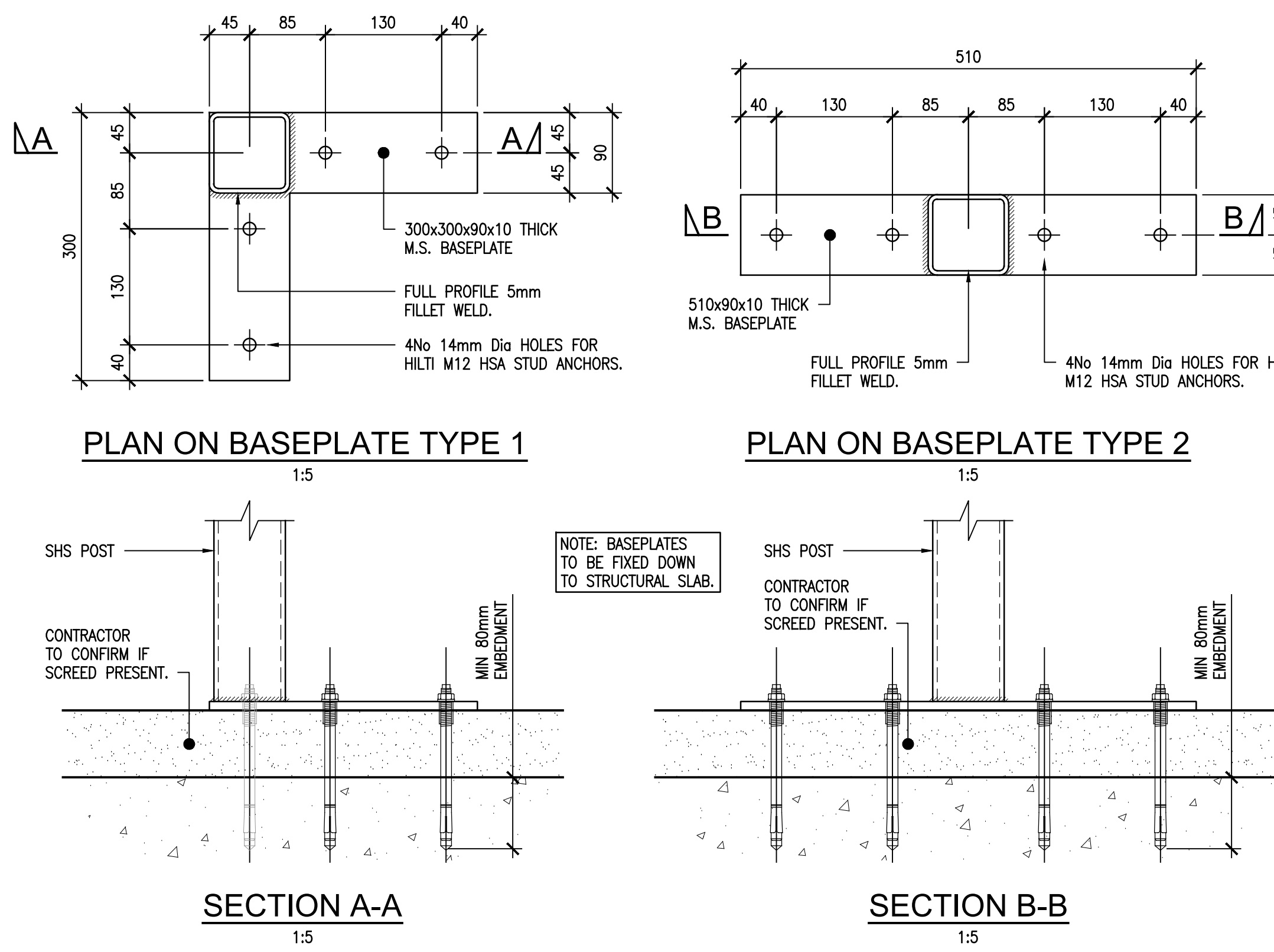
TYPICAL HFSHS POST HEAD RESTRAINT DETAIL

1:1

ALL SETTING OUT AND LEVELS IN
ACCORDANCE WITH ARCHITECTS DRAWINGS.

ALL FINISHES TO ARCHITECTS DETAILS.

ASSUMED SUPERIMPOSED LIVE LOAD = 2.5kN/m² FOR
GENERAL OFFICE PLUS 1kN/m² LIGHT WEIGHT PARTITIONS.



PLAN ON BASEPLATE TYPE 1

1:5

PLAN ON BASEPLATE TYPE 2

1:5

Rev.	Date	Description	by	chk
------	------	-------------	----	-----

THE PIRBRIGHT INSTITUTE
ASH ROAD
PIRBRIGHT

Title
TPI BACS CONTROL ROOM

Melliss LLP
CONSULTING ENGINEERS

No. 5 Saxton,
Parklands,
Railton Road, Guildford,
Surrey, GU2 9JX, UK.
© MELLISS LLP

Tel +44 (0) 1483 567878
e-mail mail@melliss.com

Scale (A0) As Noted	Drawn by TS
------------------------	----------------

Date	Checked by
MARCH 2023	DCP

Status	STAGE 4 CONSTRUCTION
--------	----------------------

STAGE 4 CONSTRUCTION		
	Drawing ref	Rev (info)

M6663/01