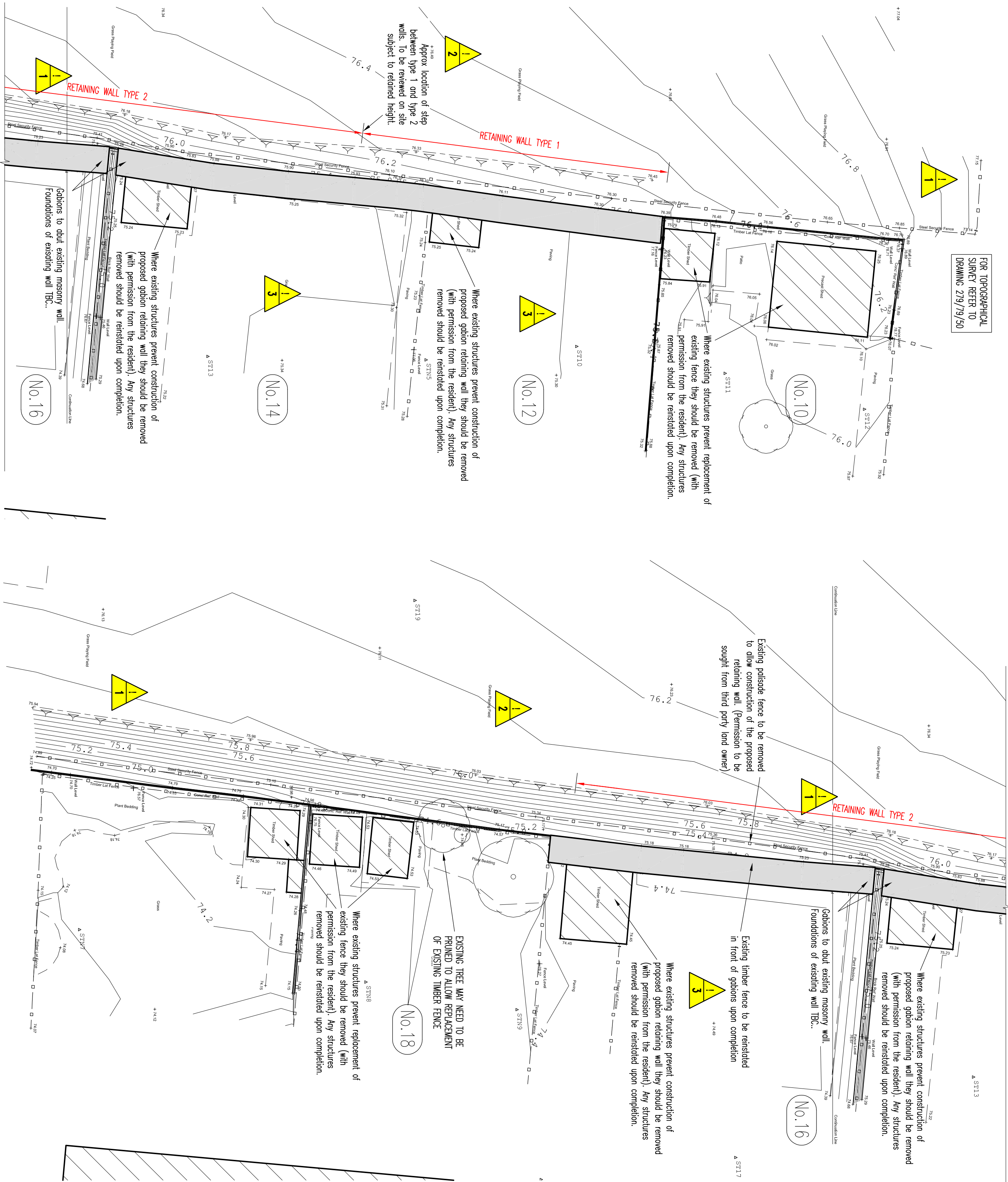


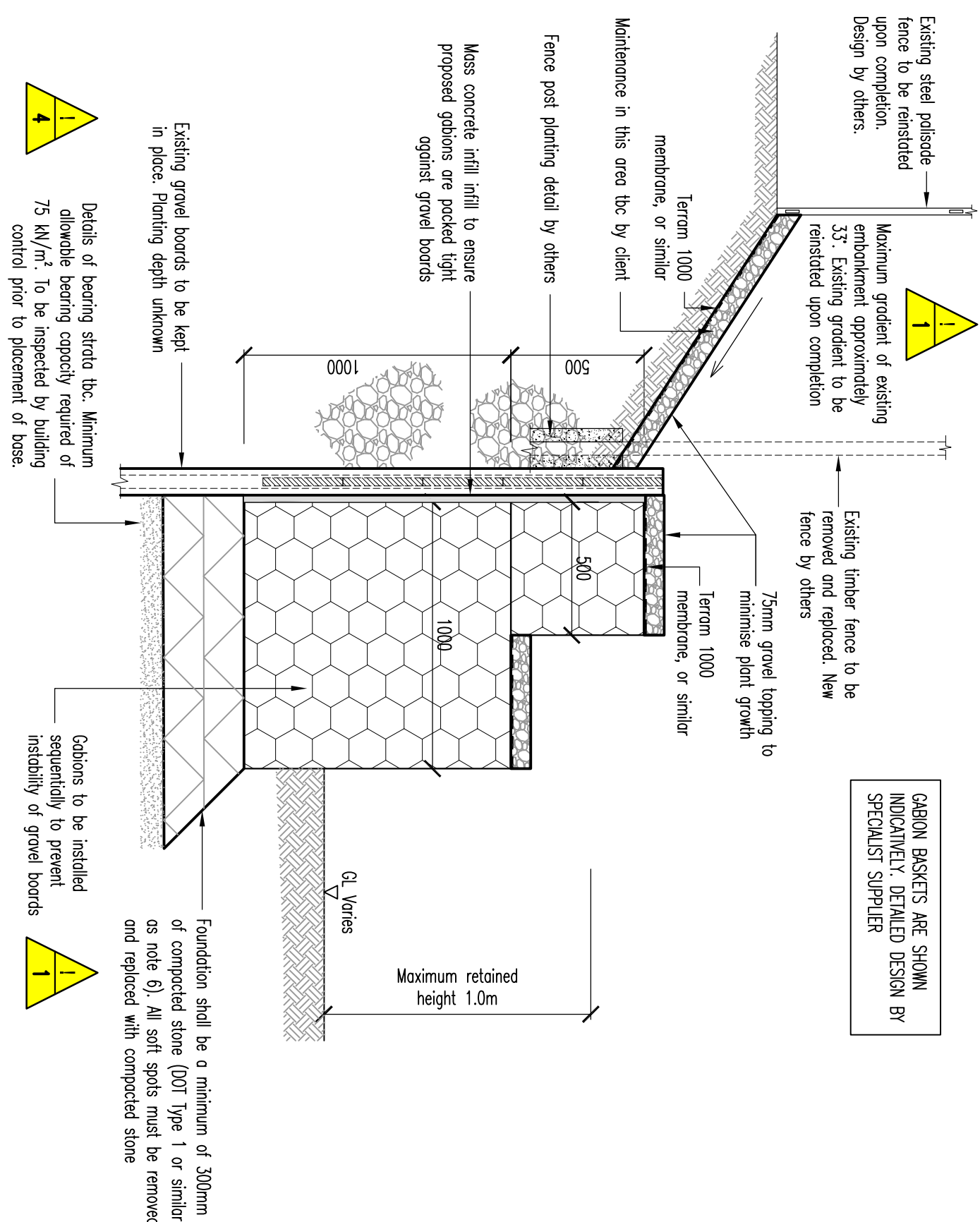
1. This drawing is to be read in conjunction with all relevant Architects and Engineers drawings.
- 2) GALVANISED GABION BASKETS  
When wire mesh gabions, of nominal 75mm mesh opening x 2.7mm mesh wire diameter, and 3.4mm sawedge wire diameter. Complete with factory fixed portions of 1m centres. All wire is mild steel to BS EN 10218-2, Galion coated (50% Zinc, 5% Aluminium) thickness to be in accordance with BS EN 10244-2
- 3) INSTALLATION  
Strictly in accordance with suppliers installation and assembly and assembly guidelines.
- 4) STONE FILL SPECIFICATION:  
To Clients/Architect's specification. Min density to be 18 kN/m<sup>3</sup>.
- 5) DESIGN  
All gabions to be designed by specialists supplier.
- 6) FOUNDATION:  
Foundation shall be a minimum of 300mm of compacted stone (007 Type 1 or similar).  
All soft spots must be removed and replaced with compacted stone.
- 7) Stones for hand pitching in the front 150mm thick face shall be carefully selected and placed in position to achieve a well bonded, neat, visually attractive, flat surface free from bulges and/or depressions.



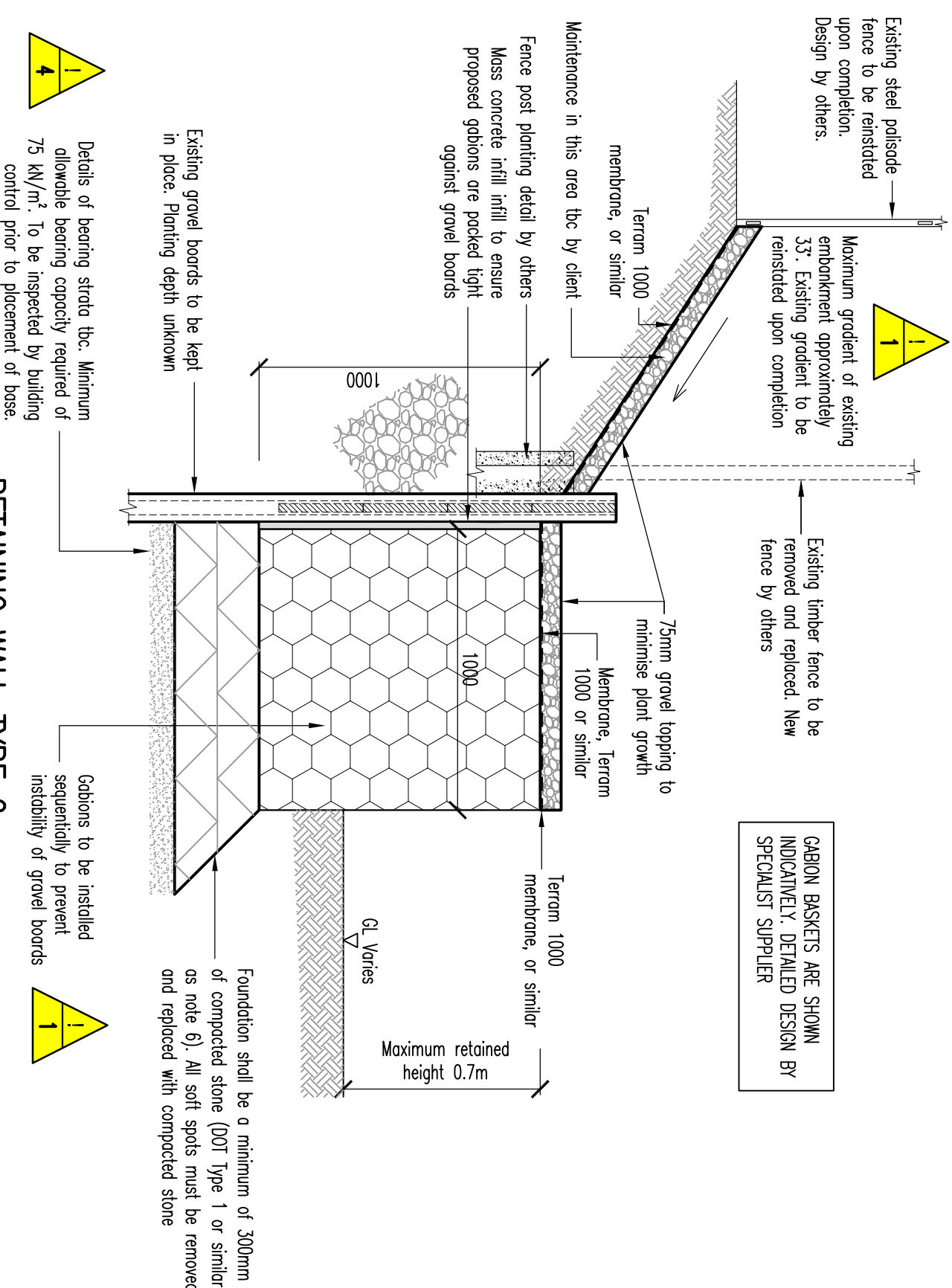
PART PLAN ON PROPOSED RETAINING WALL (1:100)

PART PLAN ON PROPOSED RETAINING WALL (1:100)

RETAINING WALL TYPE 1 (MAXIMUM RETAINED HEIGHT 1000mm) (1:20)

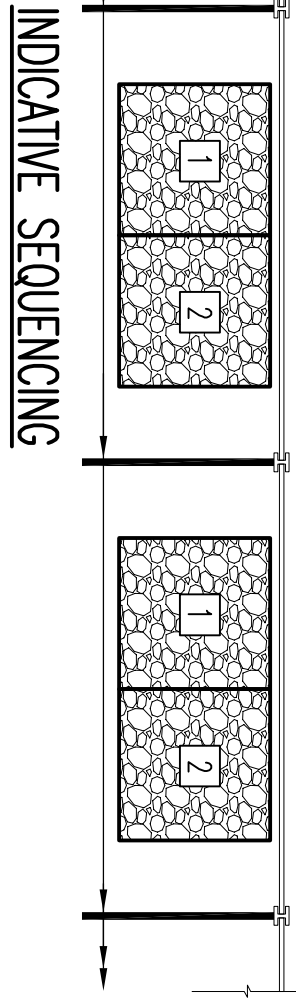


RETAINING WALL TYPE 2 (MAXIMUM RETAINED HEIGHT 700mm) (1:20)

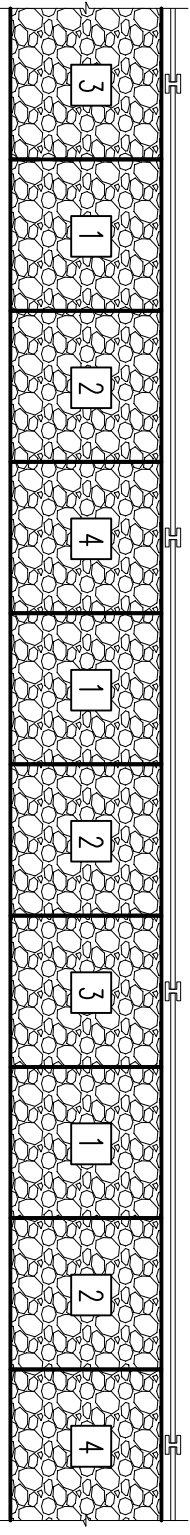


PART PLAN ON PROPOSED RETAINING WALL (1:100)

PART PLAN ON PROPOSED RETAINING WALL (1:100)



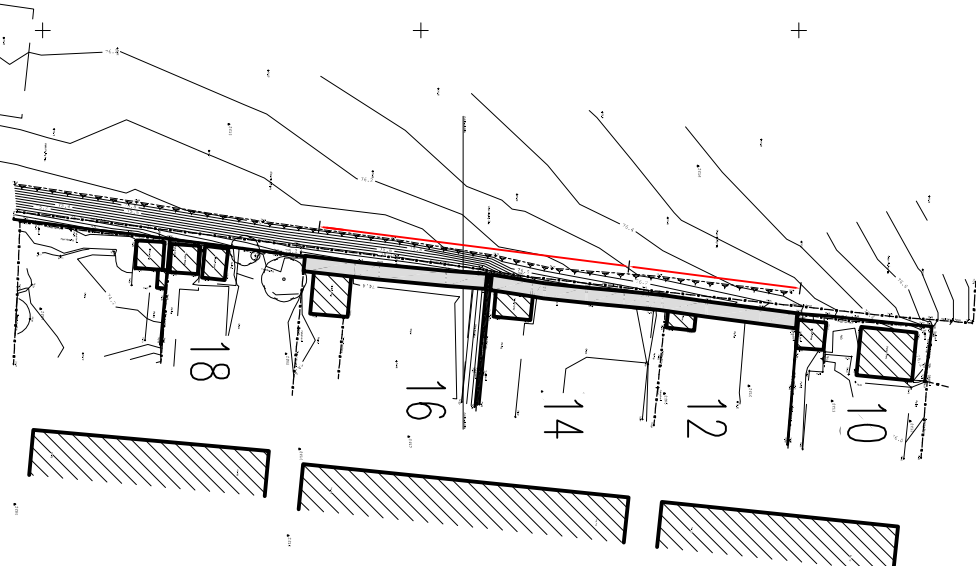
INDICATIVE SEQUENCING STAGE 1 (1:50)



INDICATIVE SEQUENCING STAGE 2 (1:50)

Gabions must be installed sequentially to ensure gravel boards are not de-stabilised. See indicative sequencing for information.  
All sequencing and temporary support to be the responsibility of the contractor

RESIDUAL HAZARD / RISK	
	RESIDUAL HAZARD / RISK TO BE MANAGED BY THE PRINCIPLE CONTRACTOR
	THE CONTRACTOR MUST ENSURE THE ADJOINING LAND REMAINS STABLE THROUGHOUT THE WORKS. TEMPORARY SUPPORT MAY BE REQUIRED TO SUPPORT THIRD PARTY LAND THROUGHOUT THE WORKS.
	MEASURES TO BE PUT IN PLACE TO PREVENT UNAUTHORIZED ACCESS INTO GARDENS DURING WORKS.
	WORKS AREA SHOULD BE MADE SECURE TO PREVENT RESIDENTS GAINING ACCESS TO THE AREA
	GROUND CONDITIONS MUST BE VERIFIED BEFORE WORKS COMMENCE ON SITE.



KEY PLAN (1:500)

Rev	By	Date	Revision
C	FMH/SLT/BS	Line of proposed fence orientated	MA
B	FMH/SLT/BS	Retaining wall revised to gabion wall design.	MA
A	CG/SLT/BS	Revised to reflect elevations.	MA
1	CG/BS/SLT/BS	Issued for comment.	MA
Rev	By	Date	Revision

RETAINING WALL GA PLAN AND SECTIONS

JARVIS WALK, ROTHWELL

LEEDS FEDERATED HOUSING ASSOCIATION

Scale: As Shown @A1 APRIL '16  
Drawn: CG  
Checked: MA

Drawn: CG  
Checked: MA

Rev: C

ARP ASSOCIATES  
CHARTERED CONSULTING ENGINEERS

Northwest House • 5/6 Northwest Business Park • Sinoe Hill • Leeds LS2 2QH  
Telephone: 0113 2751111 • Fax: 0113 2751112 • Email: info@arp.co.uk  
ARP Associates is a wholly owned subsidiary of ARP Engineering Ltd, a company registered in England and Wales with company number 2778191, whose registered office is at 5/6 Northwest Business Park, Sinoe Hill, Leeds LS2 2QH