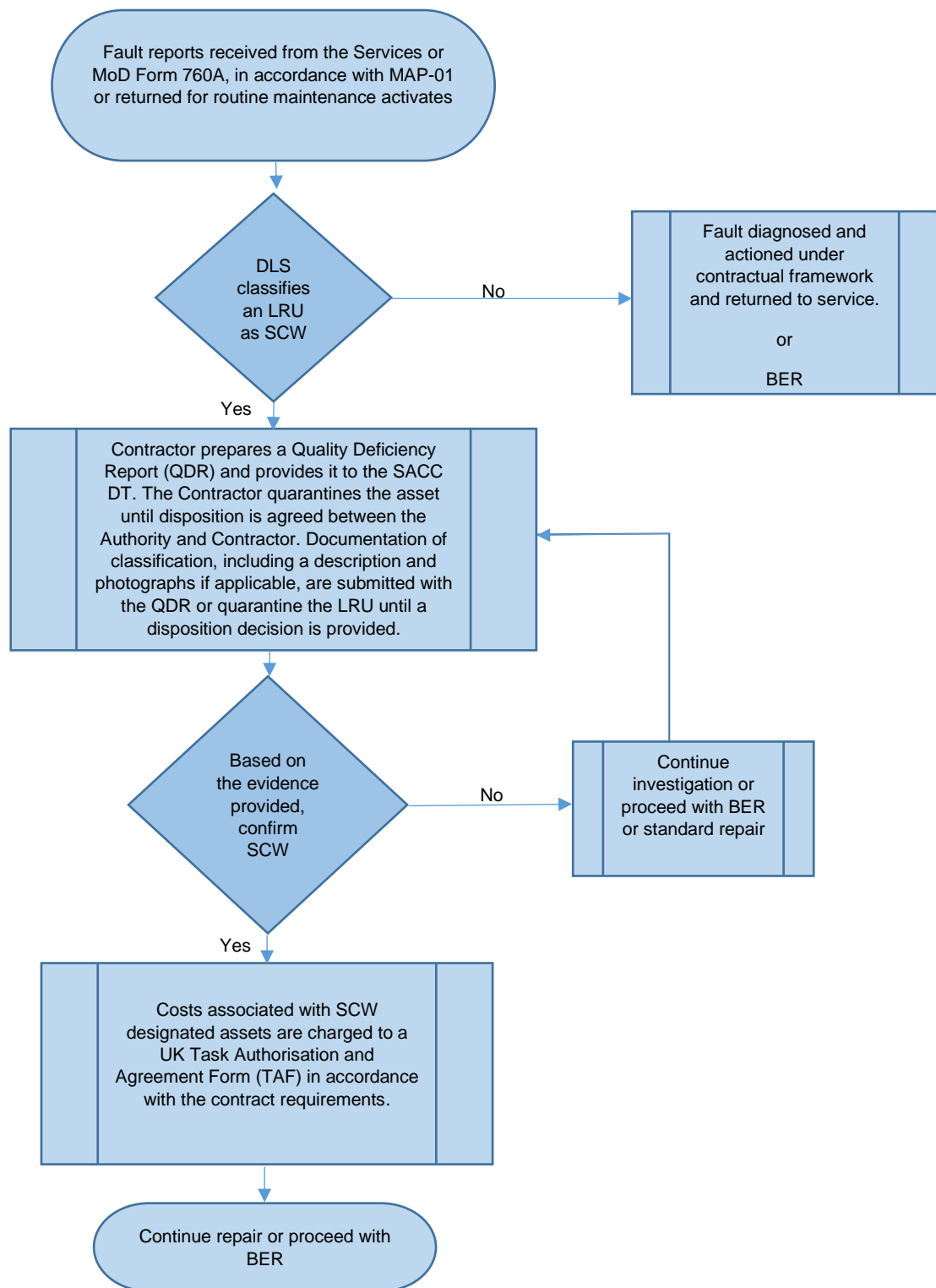
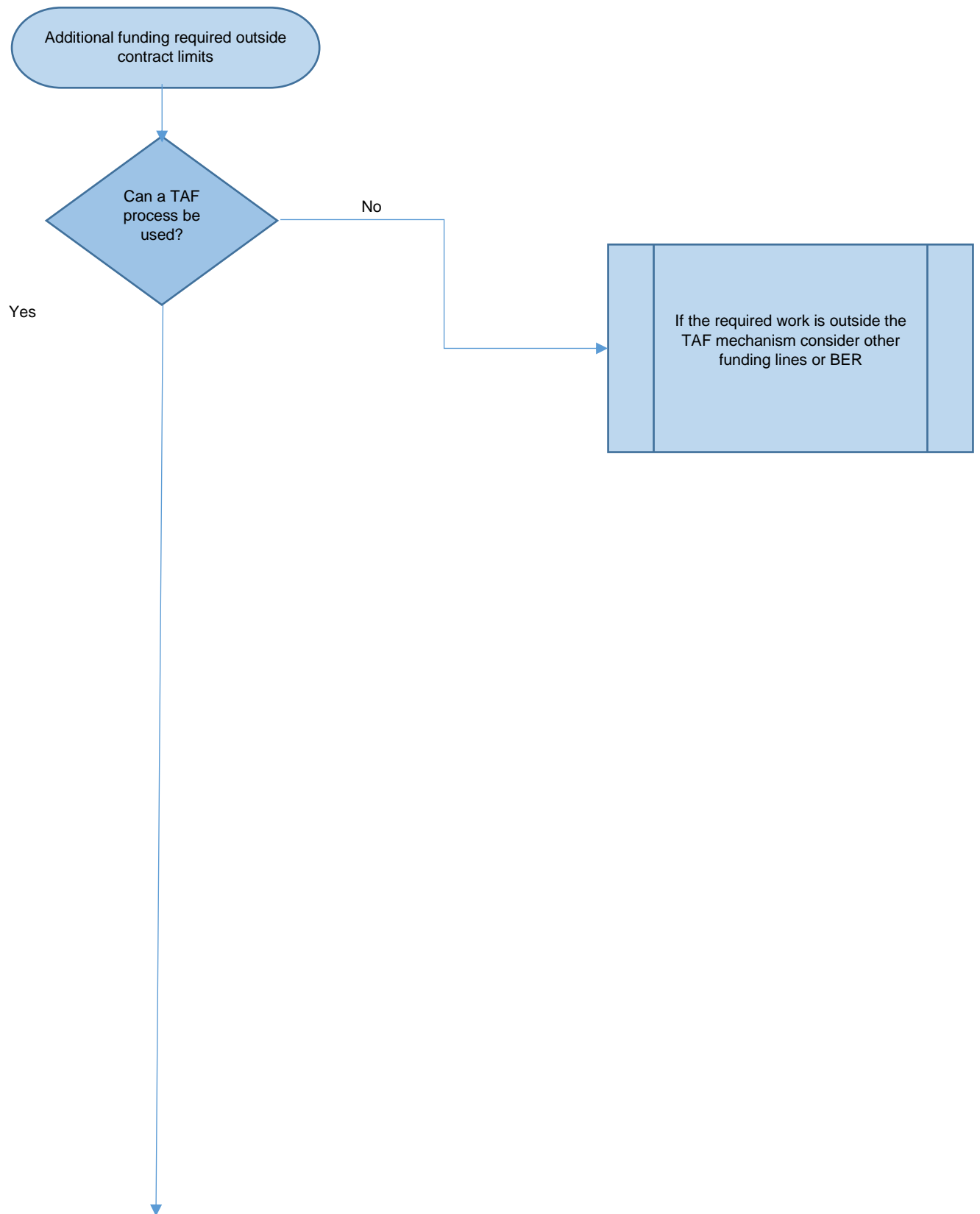


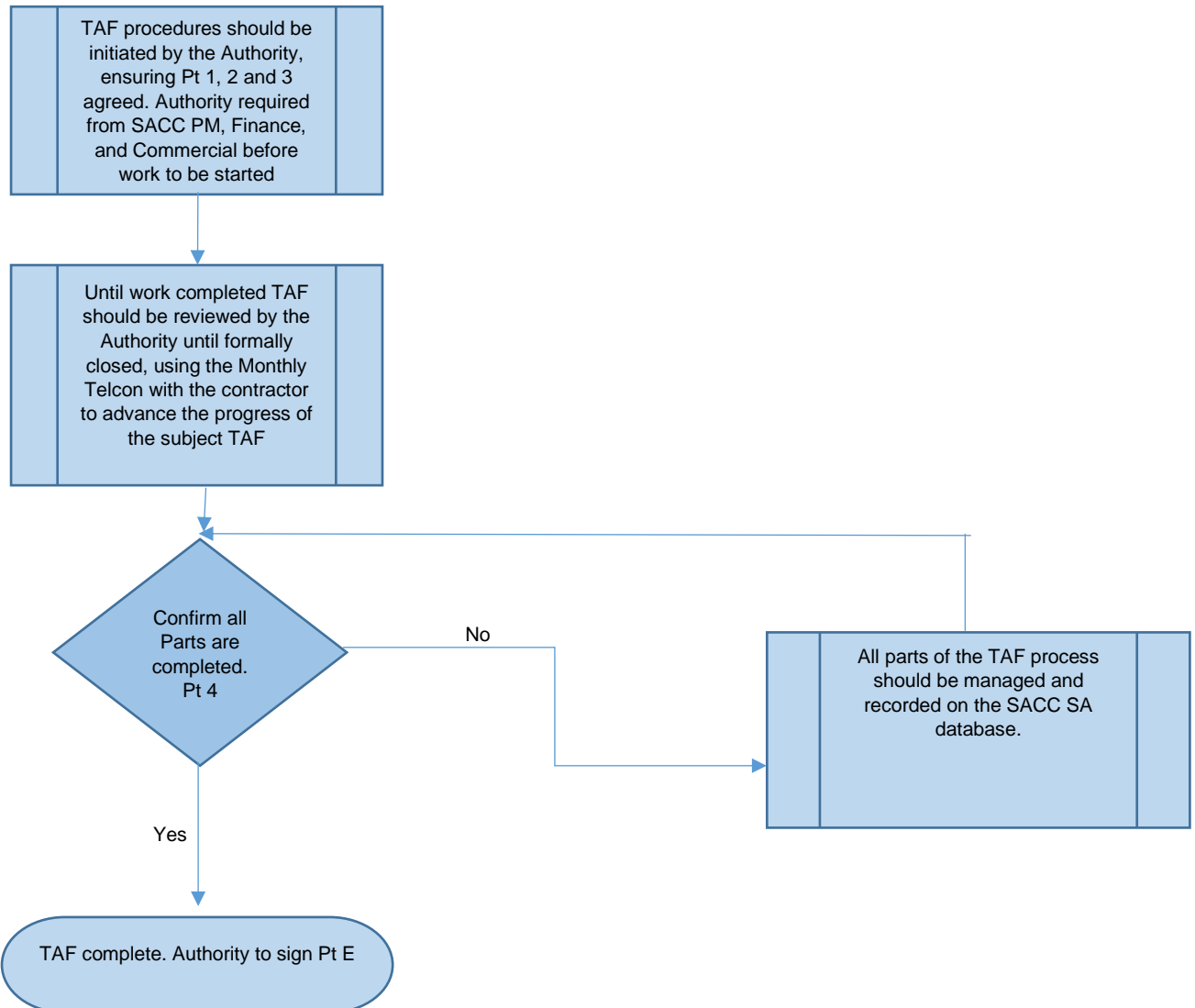
Special Category of Work

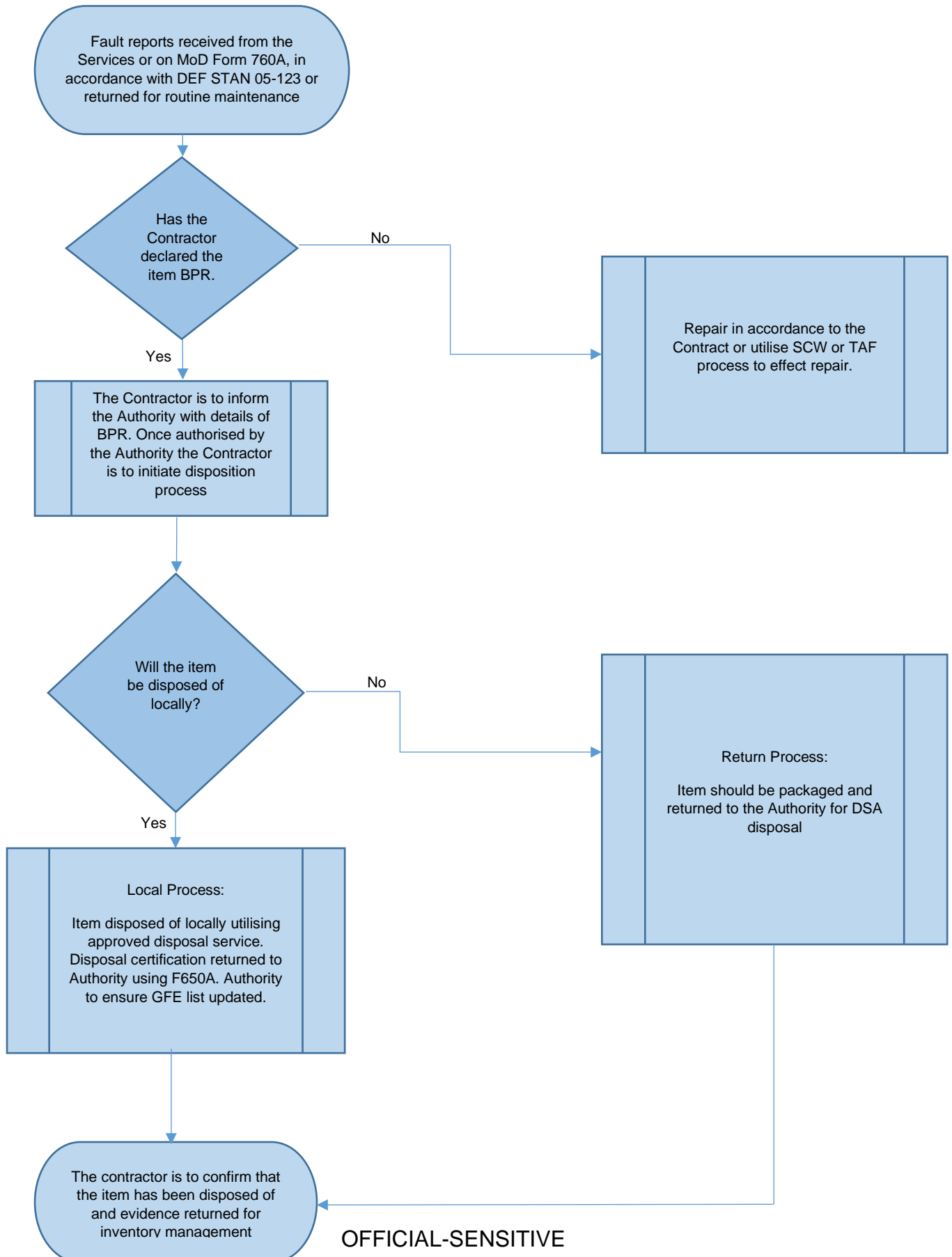
1. SCW classification is declared when any of the following actions have or appear to have taken place, including but not limited to damage to an LRI caused by:
 - a. User mishandling, misuse, negligence, unauthorized repair.
 - b. Failure to operate the system in accordance with published issued system manual.
 - c. Not properly utilizing trade packaging.
 - d. Use other than normal use (battle damage, fire, explosions, etc)



Task Authorisation Form (TAF) Process





Beyond Physical Repair (BPR)

Technical Question (TQ) Process