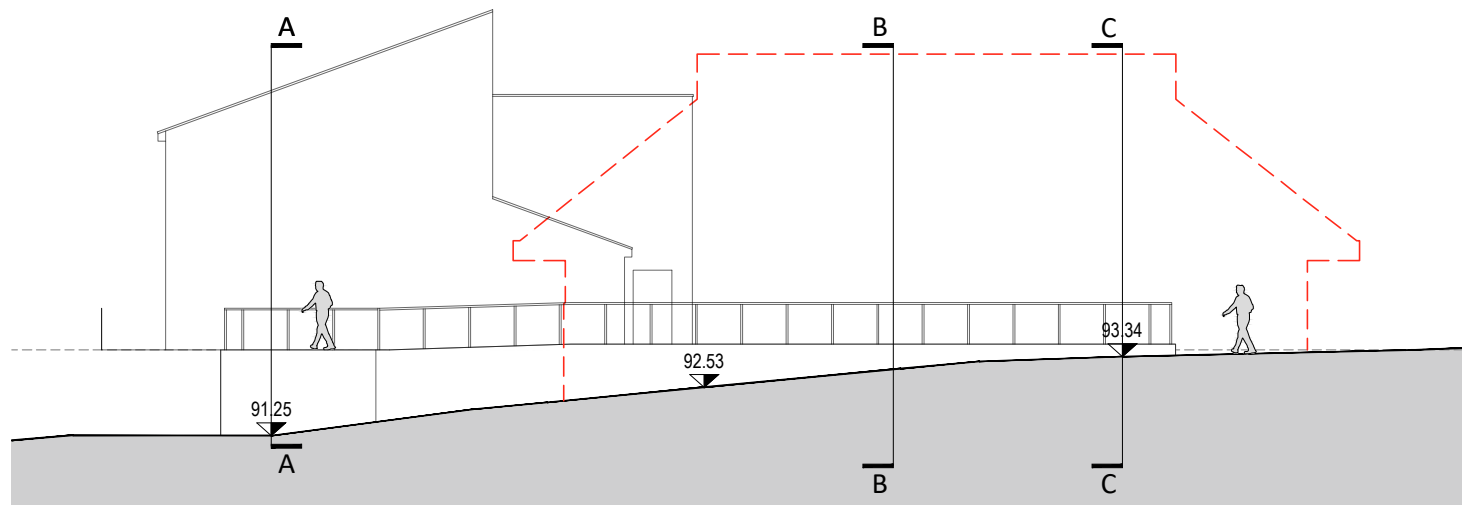


SECTION K-K
(Existing)
1:200@A3



SECTION K-K
(Proposed)
1:200@A3

PRELIMINARY



Stenton Obhi Architects
3 Lakeview House, Bond Avenue, Bletchley, Milton Keynes,
Buckinghamshire, MK1 1FB

t : 01908 732100 e: soa@so-architects.co.uk www.so-architects.co.uk

Campbell Park Parish Council
1 Pencarrow Place, Fishermead
Milton Keynes, MK6 2AS

CLIENT

Community Hub Project
Springfield
Milton Keynes

PROJECT

CONCEPT DESIGN
Site Section KK

DRAWING

STATUS	P
DRAWING STATUS	
P - Preliminary	T - Tender
PL - Planning	R - Record
BR - Building Reg	
C - Construction	

DRAWN	QT	CHECKED	NS
SCALE	1:200@A3	DATE	Feb 22
No	06325-120		

This drawing/design is for use solely in connection with the project. This drawing/design is the copyright of STENTON OBHI ARCHITECTS LTD and must not be reissued, loaned or copied without written consent. All dimensions/setting out to be checked on site by the contractor before construction proceeds. Use written dimensions only, do not scale from drawing. This drawing is to be read in conjunction with all construction status information relevant to the project. Any apparent discrepancy to be brought to the attention of STENTON OBHI ARCHITECTS LTD.