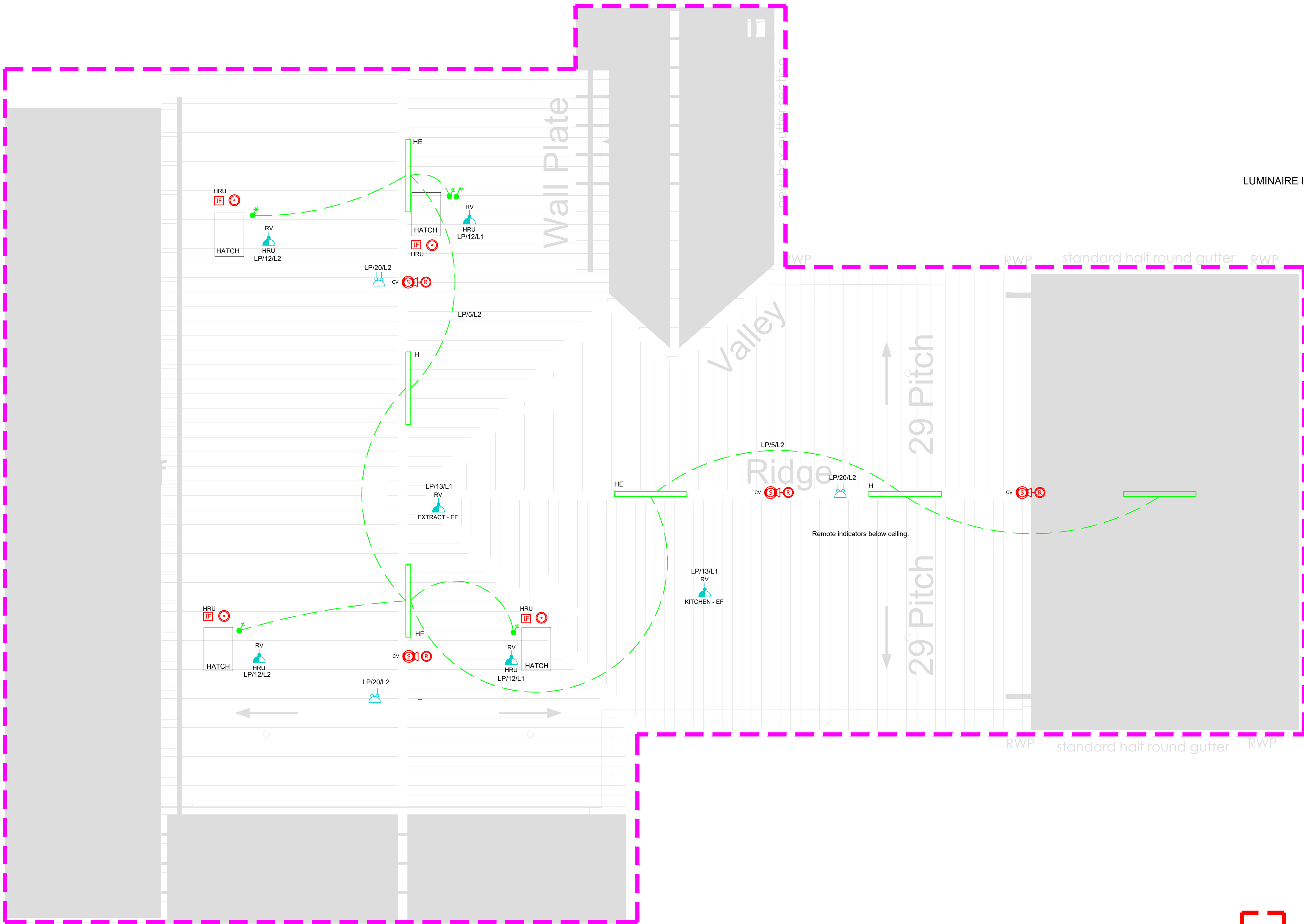
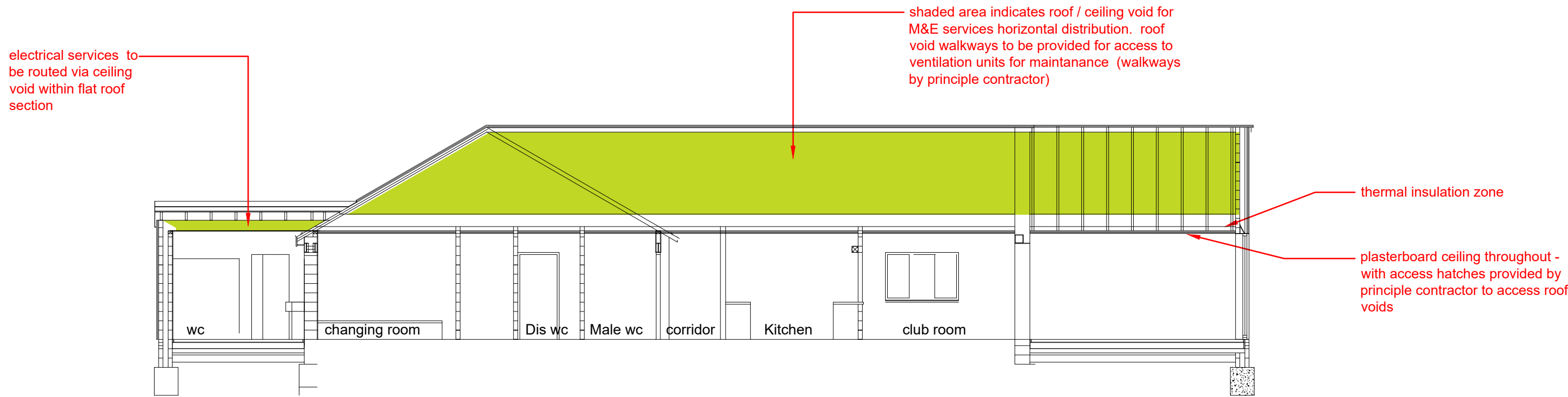


TYPES F & H
GLAMOX i40

LUMINAIRE IMAGES - SEE LUMINAIRE SCHEDULE WITHIN SPECIFICATION FOR FURTHER DETAILS



1 Roof Void
1:50



2 Building Section
1:100

- FIRE ALARM ZONE 1 GOUND FLOOR
- FIRE ALARM ZONE 2 GOUND FLOOR
- FIRE ALARM ZONE 3 GOUND FLOOR
- FIRE ALARM ZONE 4 ROOF VOID

FIRE ALARM ZONES

- NOTES
- DRAWING TO BE READ IN CONJUNCTION WITH THE ELECTRICAL SPECIFICATION AND ALL OTHER ELECTRICAL DRAWINGS
 - REFER TO LUMINAIRE SCHEDULE WITHIN SPECIFICATION APPENDICES FOR FURTHER DETAILS OF LUMINAIRES
 - REFER TO DRAWING AX1937-E-05 FOR ELECTRICAL LEGEND

B	Revised Tender Issue - updated to suit latest building layouts	July 23	NR	AW
A	TENDER ISSUE	JULY 22	NR	AW
rev.	description	date	drawn	approved

information approval tender contract construction

Axis Mechanical & Electrical Consulting Engineers
No.8 Poplars Court
Lenton Lane
Nottingham
NG7 2RR
United Kingdom
tel: +44 (0) 115 9791875
fax: +44 (0) 115 9249179
email: mail@axisconsult.co.uk
web: www.axisconsult.co.uk



client
SAWTRY PARISH COUNCIL

project
GREEN FIELD SPORTS FIELD
SAWTRY, HUNTINGDON

drawing
ELECTRICAL SERVICES
ROOF SPACE

drawn N.R.	approved A.W.	date JULY 22	scale 1:50@A1
drawing ref. AX1937-E-05	revision B		