

Photographic Record

To support the ITT:

Construction Phase

Fish Passage Improvements

Bridgetown Weir, River Exe



Part of the Strategic Exe Weirs
programme

Document Date: 21st January 2022

1. Access from main road & potential storage area



Photo 1: Access to the forestry track/public bridleway from Edbrooke Road (looking south).



Photo 2: Access to the forestry track/public bridleway from Edbrooke Road (looking south), and entrance to potential storage area (red) and access towards site (yellow).



Photo 3: Potential storage area for delivered materials.

2. Forestry track / Public bridleway



Photo 4: Forestry track / public bridleway

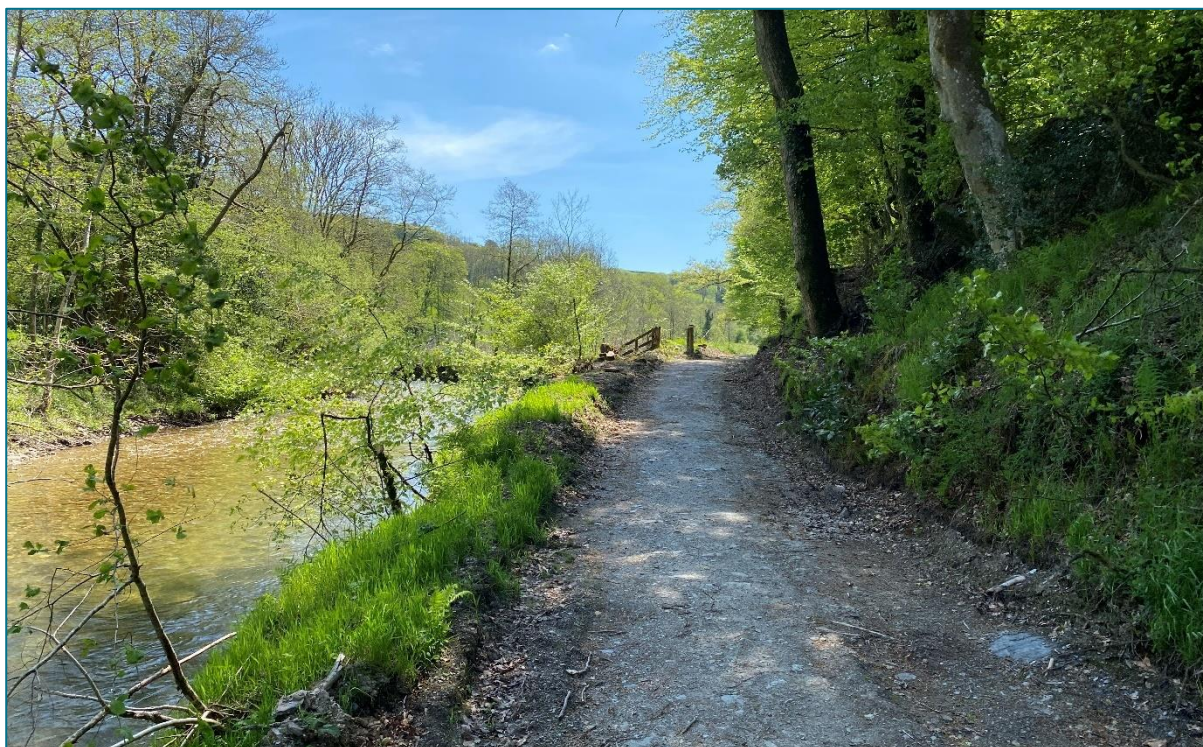


Photo 5: Forestry track / public bridleway, showing proximity to river for approximately 20m.

3. Possible access to riparian field 1



Photo 6: Potential area for breaking through hedge/mound for access to riparian field, from track.



Photo 7: Potential area for breaking through hedge/mound for access to riparian field, from field.



Photo 8: Riparian field adjacent to potential access point 1. Woody debris may still be present (looking south)

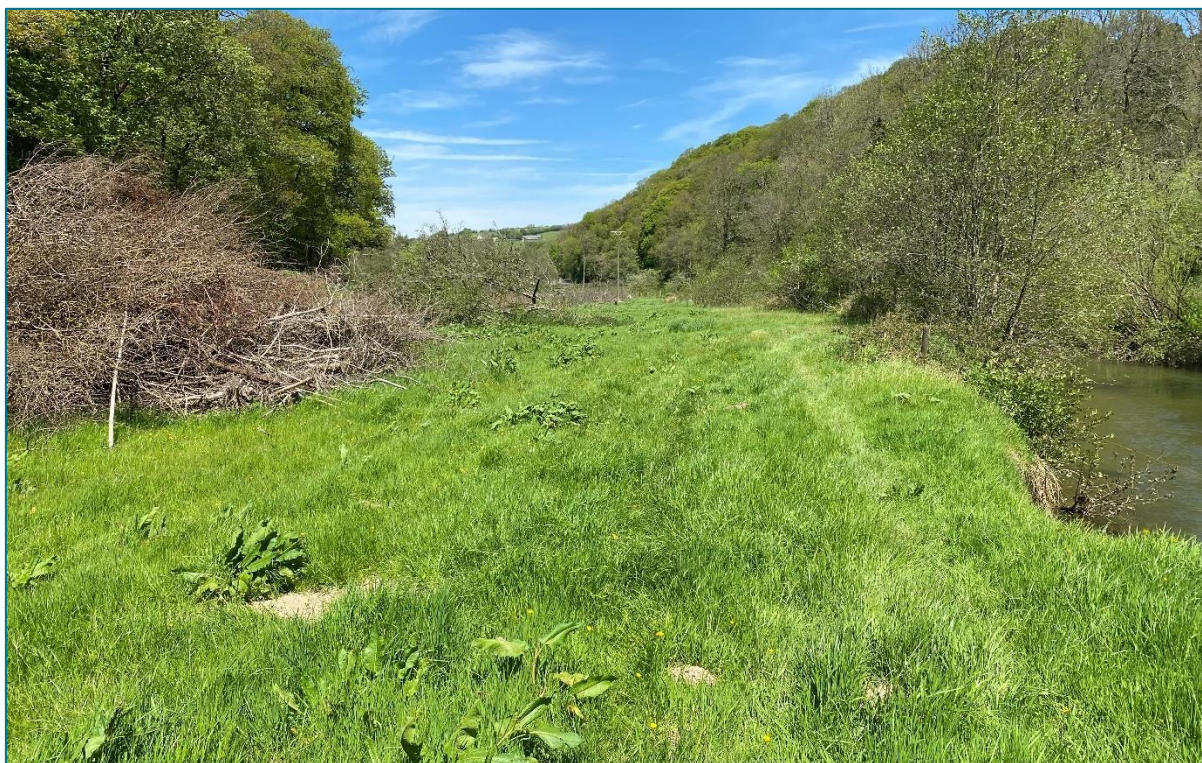


Photo 9: Riparian field that would require traversal if using potential access point 1. Rough pasture (looking north).



Photo 10: Area of width restriction for access if using potential access point 1. Ground has potential to be wet. Note forestry vehicle tracks (looking south).



Photo 11: Area of width restriction for access if using potential access point 1. Ground has potential to be wet. Note forestry vehicle tracks (looking north).

4. Possible access to riparian field 2



Photo 12: Alternatively, continue down forestry track / public bridleway to potential access point 2 (looking south).

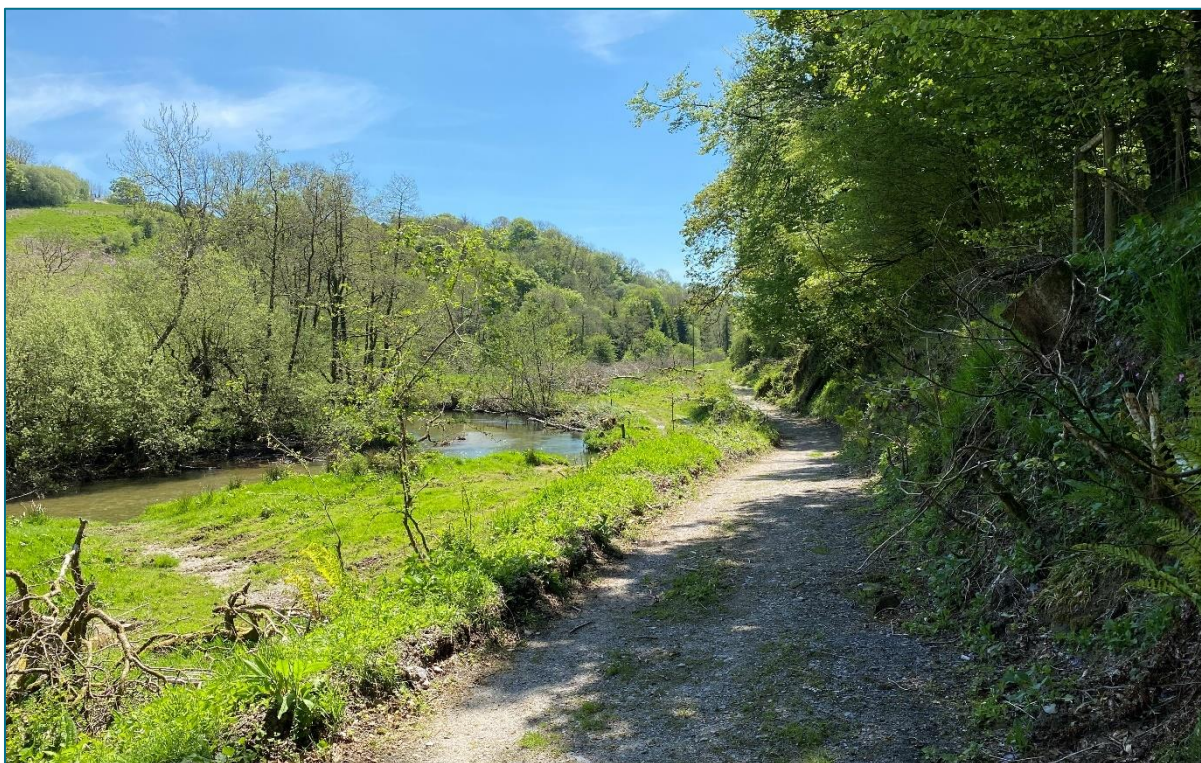


Photo 13: Alternatively, continue down forestry track / public bridleway to potential access point 2 (looking south).



Photo 14: Potential access point 2. Hedge mound would require breaking through (looking southeast).



Photo 15: Potential access point 2. Note wet area along field side of hedge mound (looking south).

5. Towards site setup area



Photo 16: Access over riparian field towards site. Note overhead power cables (red) (looking east).



Photo 17: Close up of overhead power cables (looking east).



Photo 18: Area highlighted for potential site setup (looking east).

6. Area for fish pass, pool, bank profiling and weir toe extension

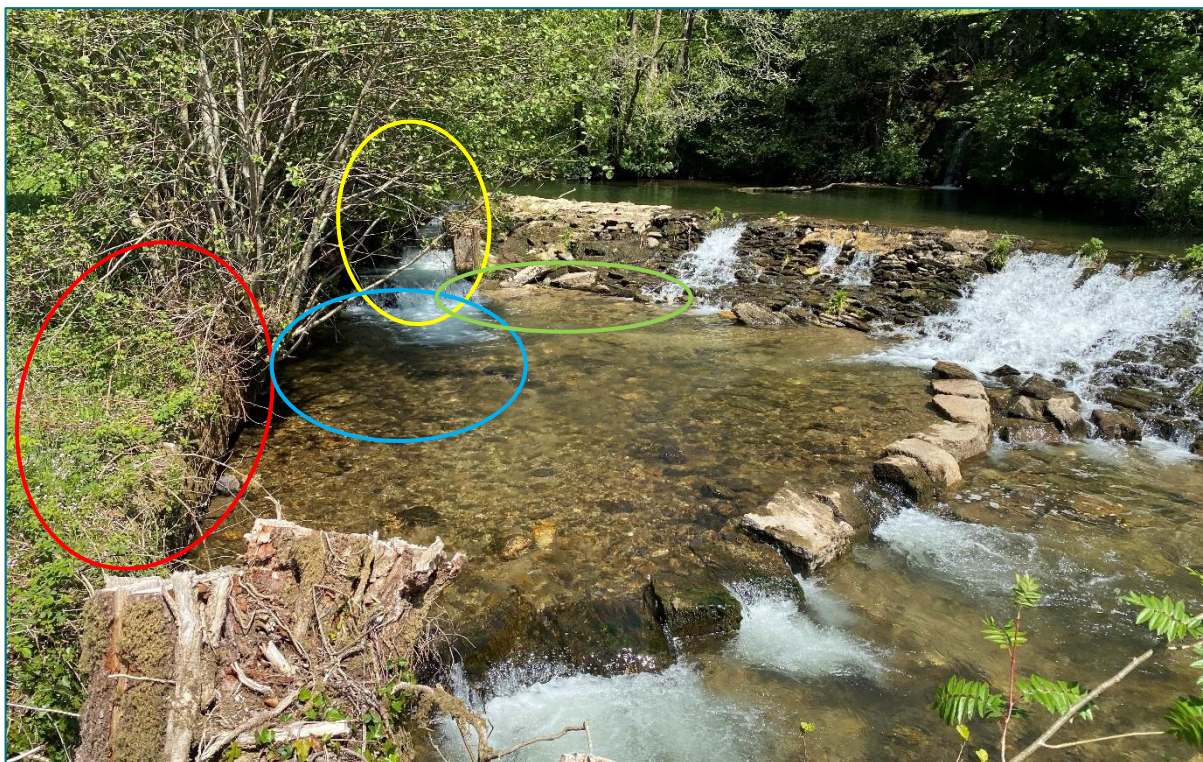


Photo 19: Area for fish pass (yellow), pool (blue), bank profiling (red) and toe extension (green) (looking north)



Photo 20: Close up of the existing fish pass channel to house the new fish pass (looking west).



Photo 21: Close up of the bank to be profiled and trees to be removed (looking southwest)

7. Area for weir crest levelling

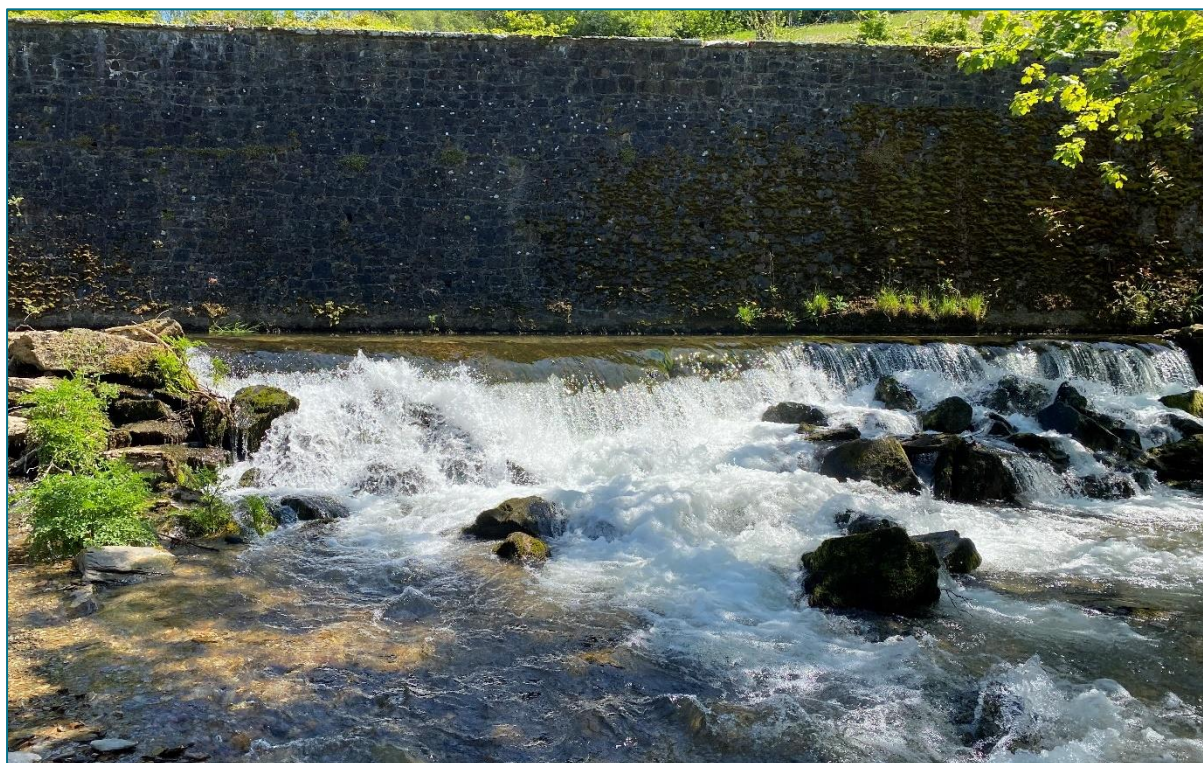


Photo 22: Area for crest levelling works (looking east).



Photo 23: Area for crest levelling works (looking north).

8. Area for fish screen and maintenance walkway



Photo 24: Area for fish screen and maintenance walkway (looking north).

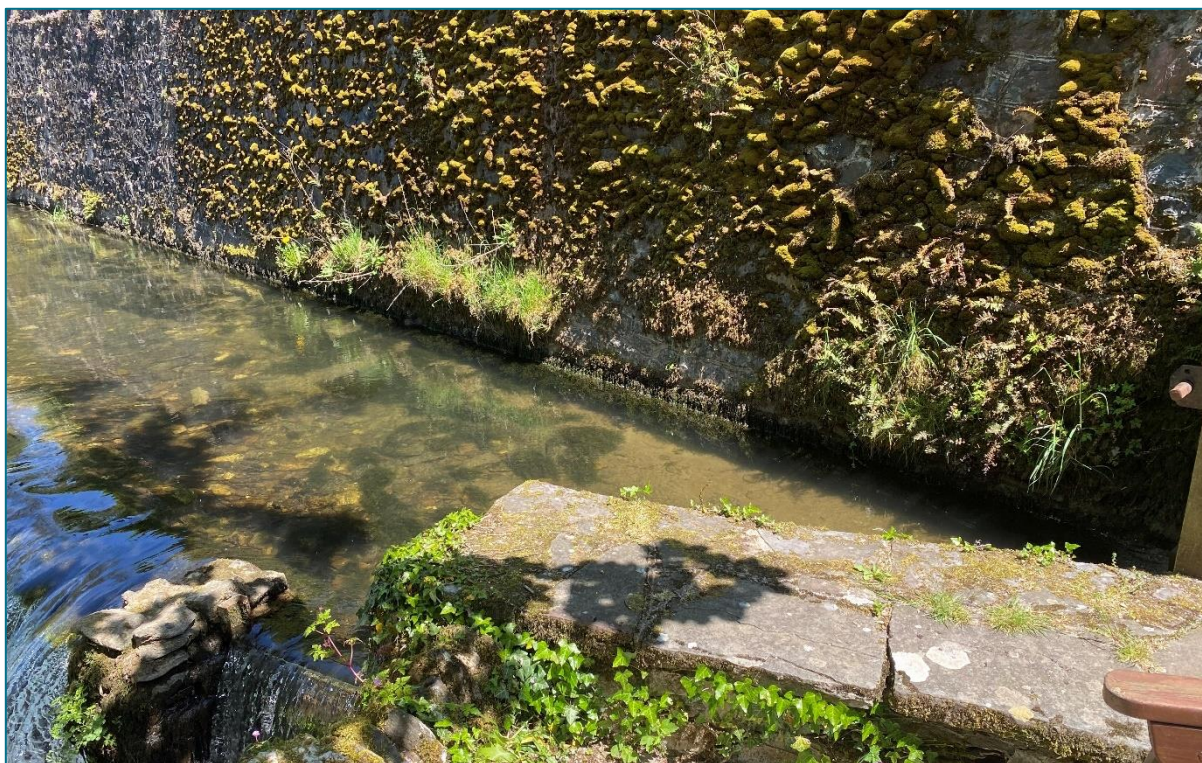


Photo 25: Area for fish screen and maintenance walkway (looking northeast).

9. Area for smolt chute, pool and stone underfill



Photo 26: Area for smolt chute and pool (looking northeast).

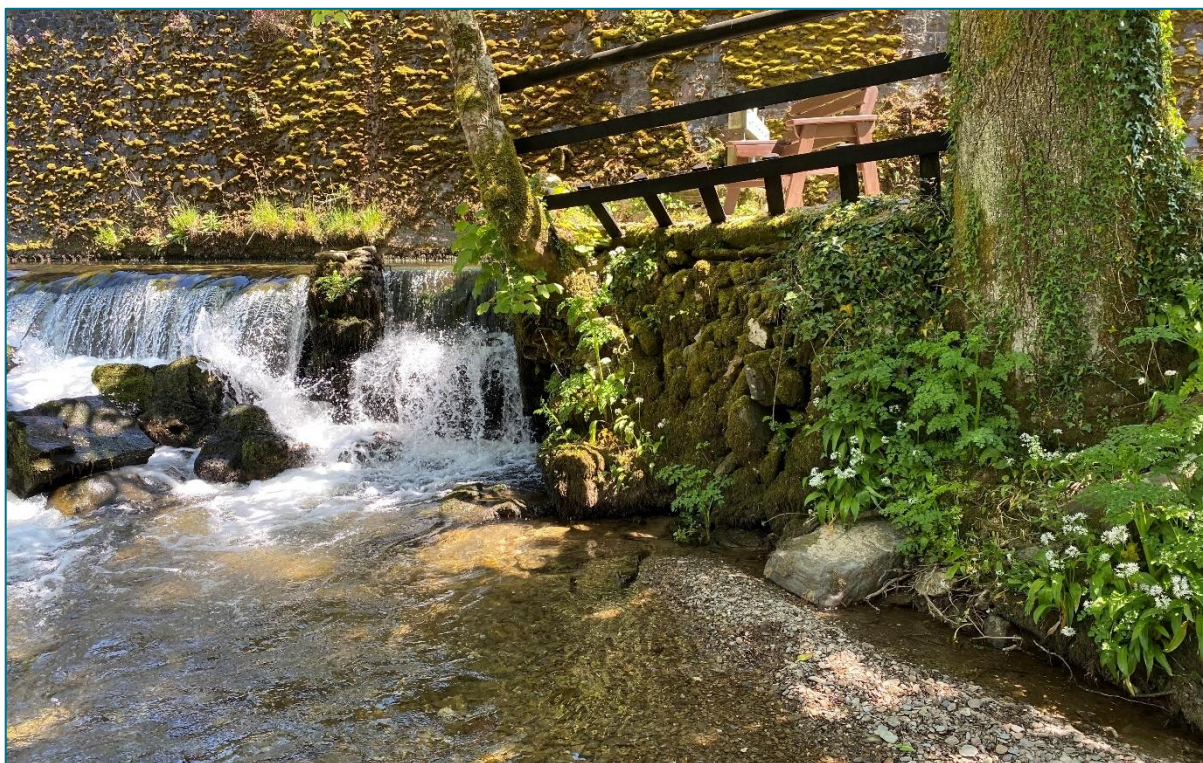


Photo 27: Detail of area for smolt chute and riparian wall (looking east).

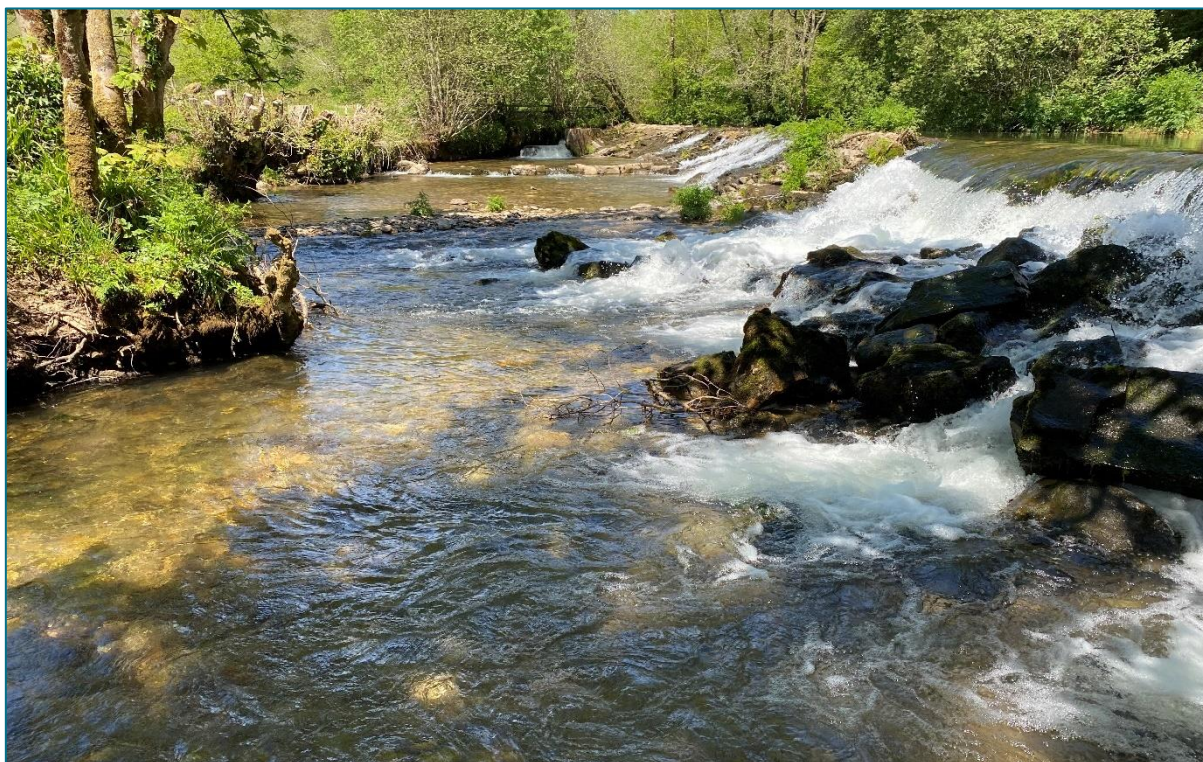


Photo 28: Area for smolt chute and pool (looking north).

10. Access across river



Photo 29: Looking across river from smolt chute area, highlighting possible crossing point.



Photo 30: Close up of possible crossing point.