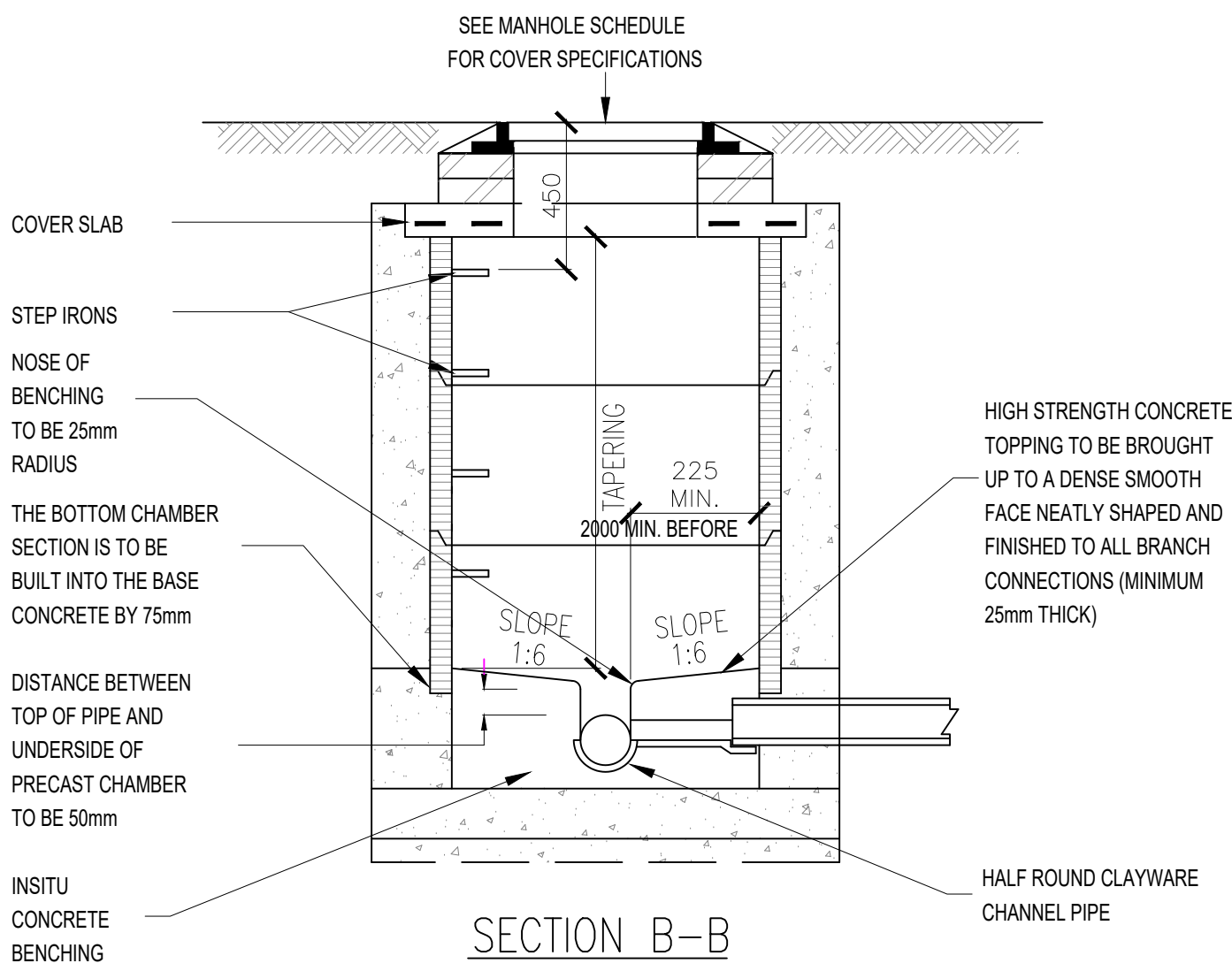
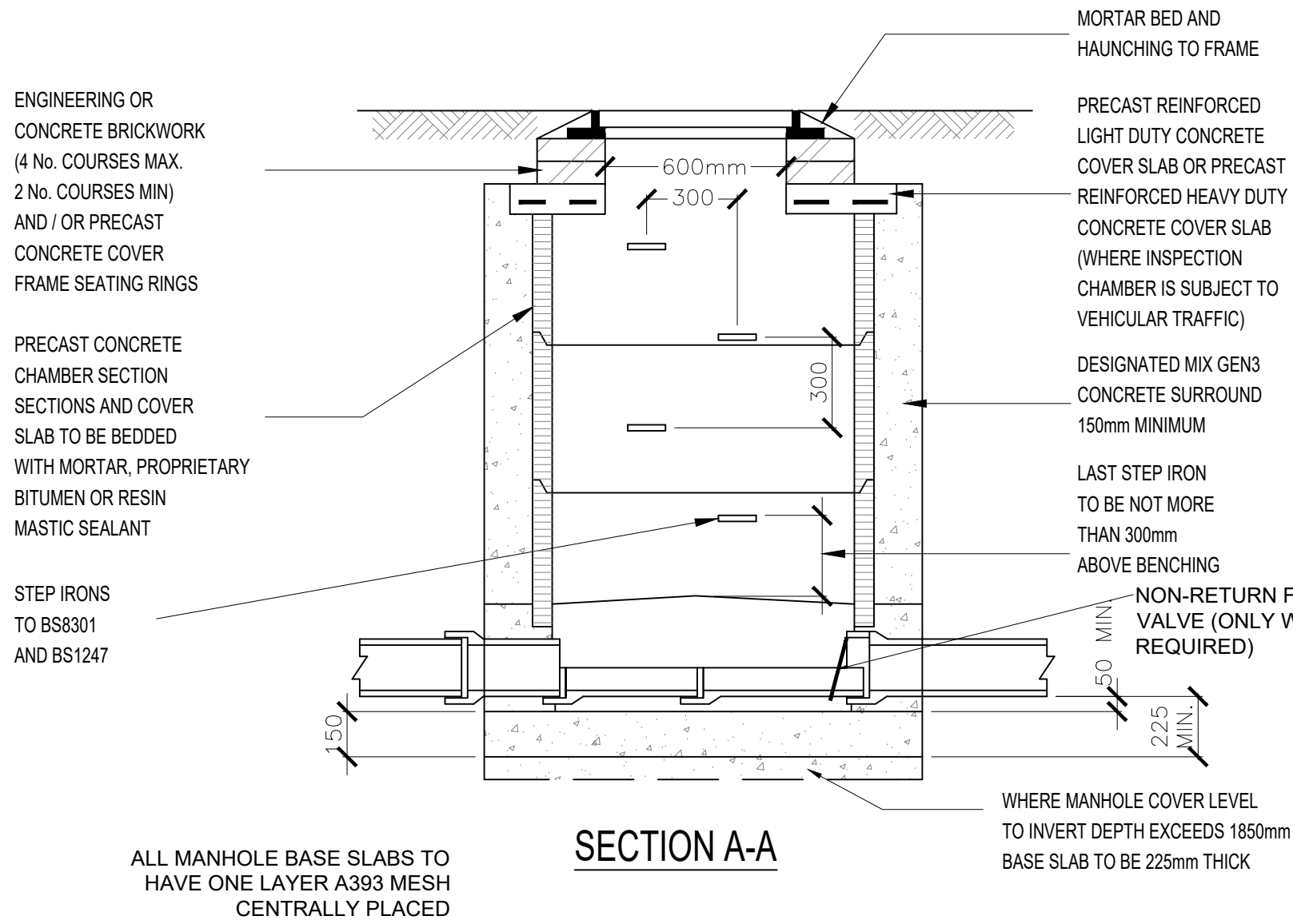


ALL DIMENSIONS TO BE CHECKED BY CONTRACTOR

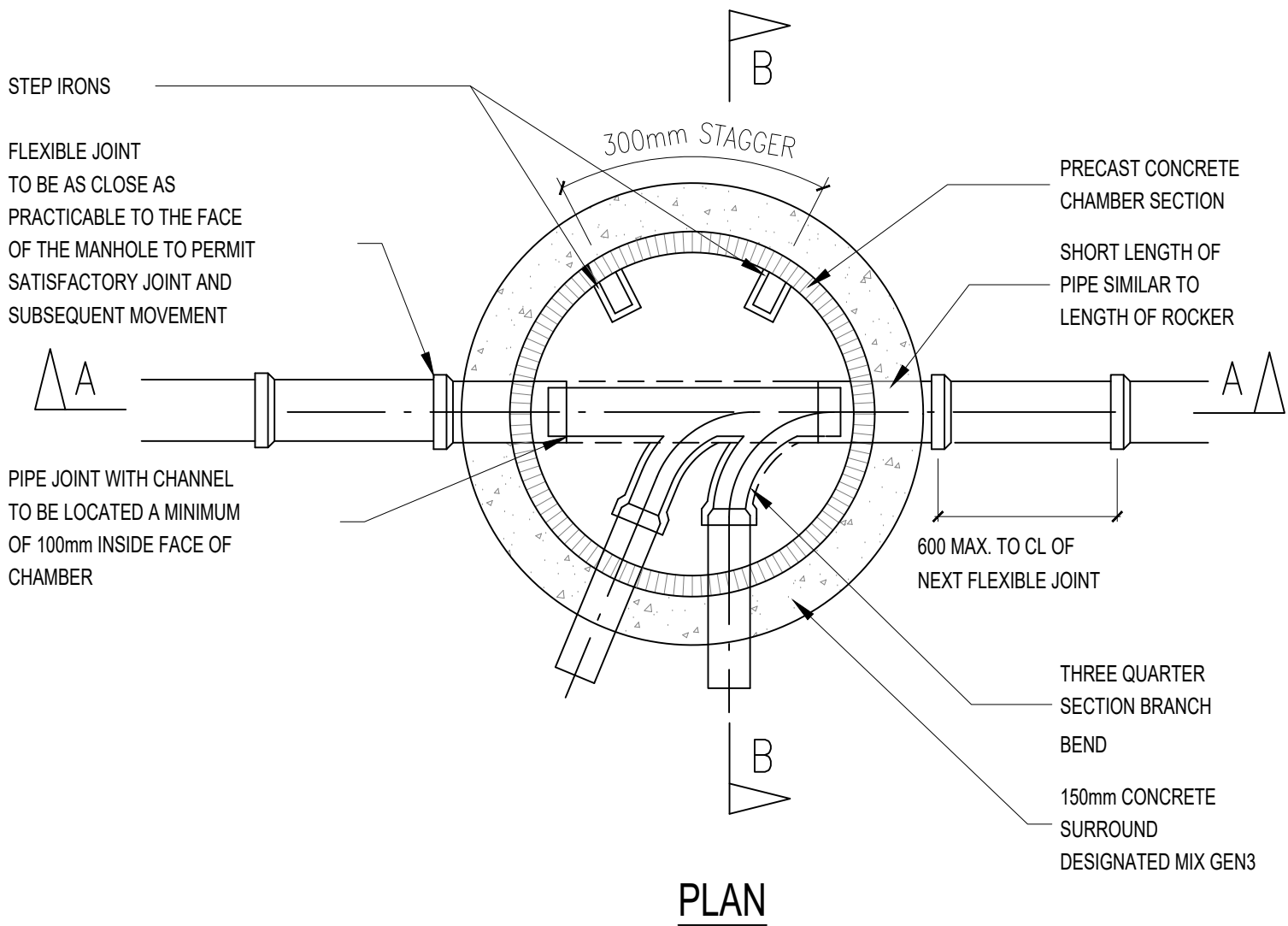
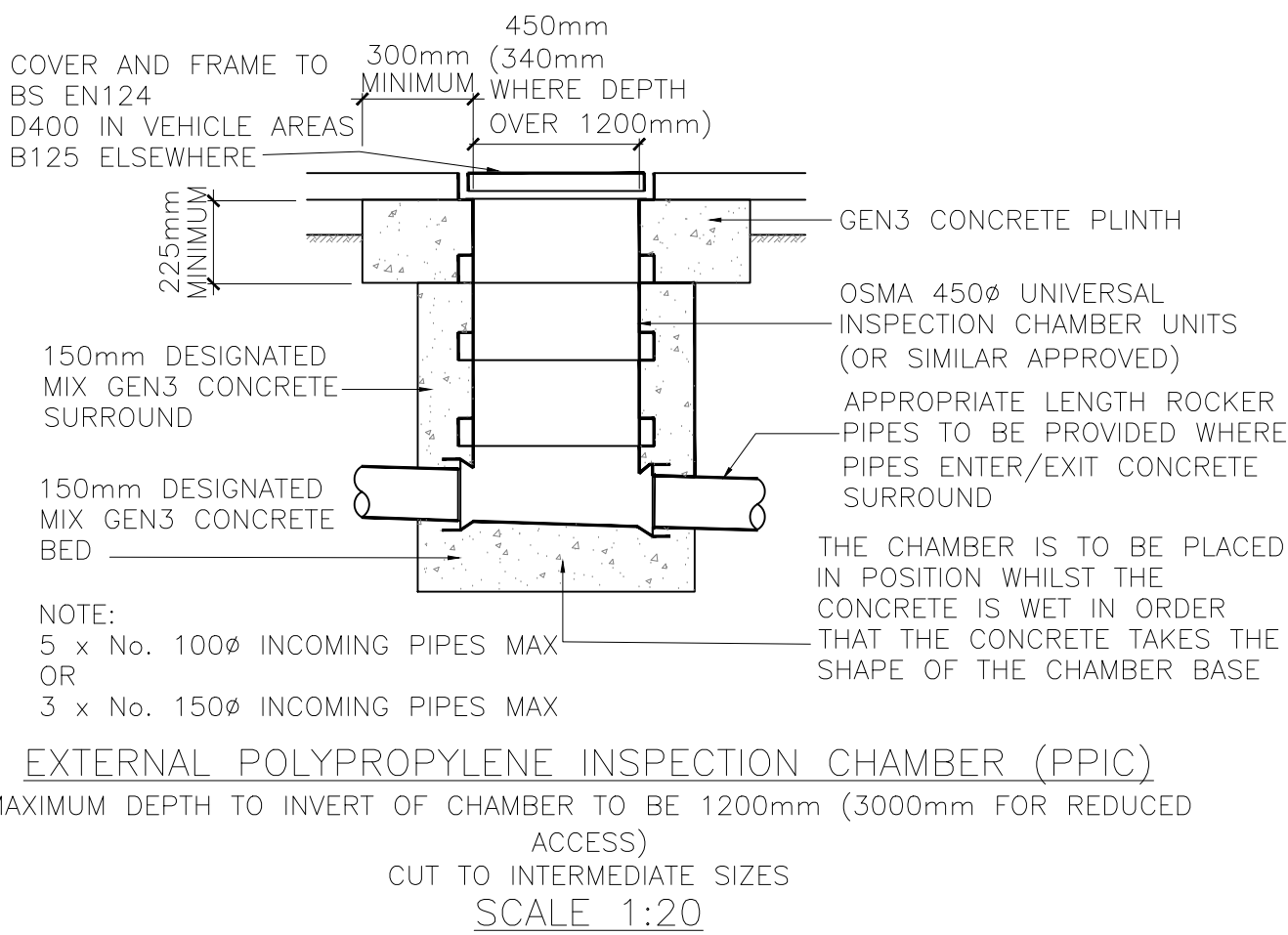
NOTE: Details for private drainage only.

NOTES



PRECAST CONCRETE MANHOLE TYPE B (PCC) IN EXTERNAL AREAS DETAIL

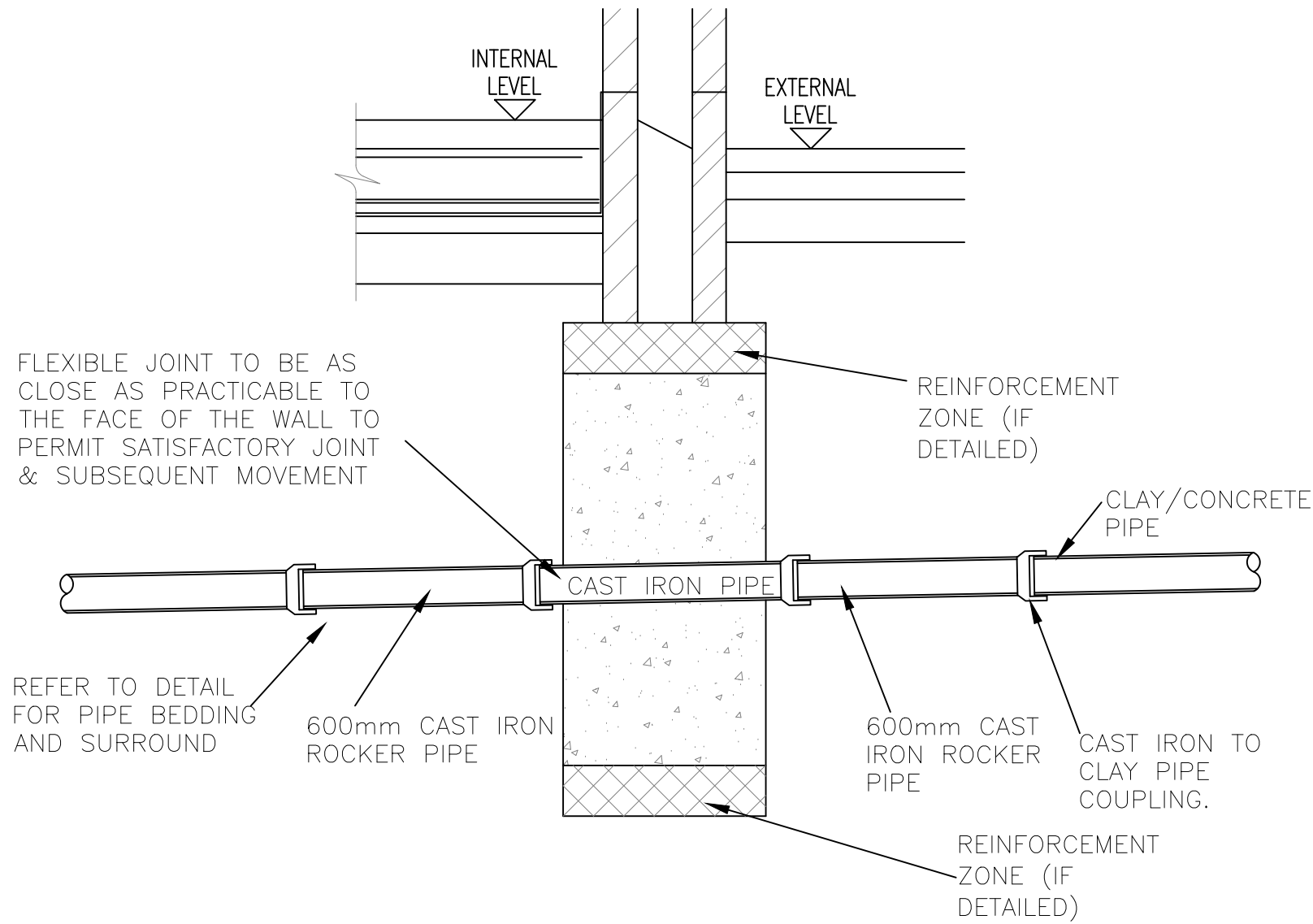
SCALE 1:20



NOTES:
CHAMBERS WITH OUTGOING PIPES GREATER THAN 500mm DIAMETER SHALL BE FITTED WITH GUARD BARS, SAFETY CHAINS OR OTHER SAFETY DEVICES. TOE HOLES TO BE PROVIDED IN BENCHING OF SEWERS GREATER THAN 450mm DIAMETER FOR ACCESS TO INVERT. WHERE INTERNAL HEIGHT EXCEEDS 1800mm MANHOLE MAY BE PROVIDED WITH REDUCING COVER AND SHAFT. SHAFT DIAMETER TO BE 600mm DIAMETER OR 900mm DIAMETER IF LONGER THAN 900mm.

PIPE DIAMETER	ROCKER PIPE * LENGTH
150mm-450mm	500mm-750mm
475mm-750mm	750mm-1000mm
OVER 750mm	1200mm

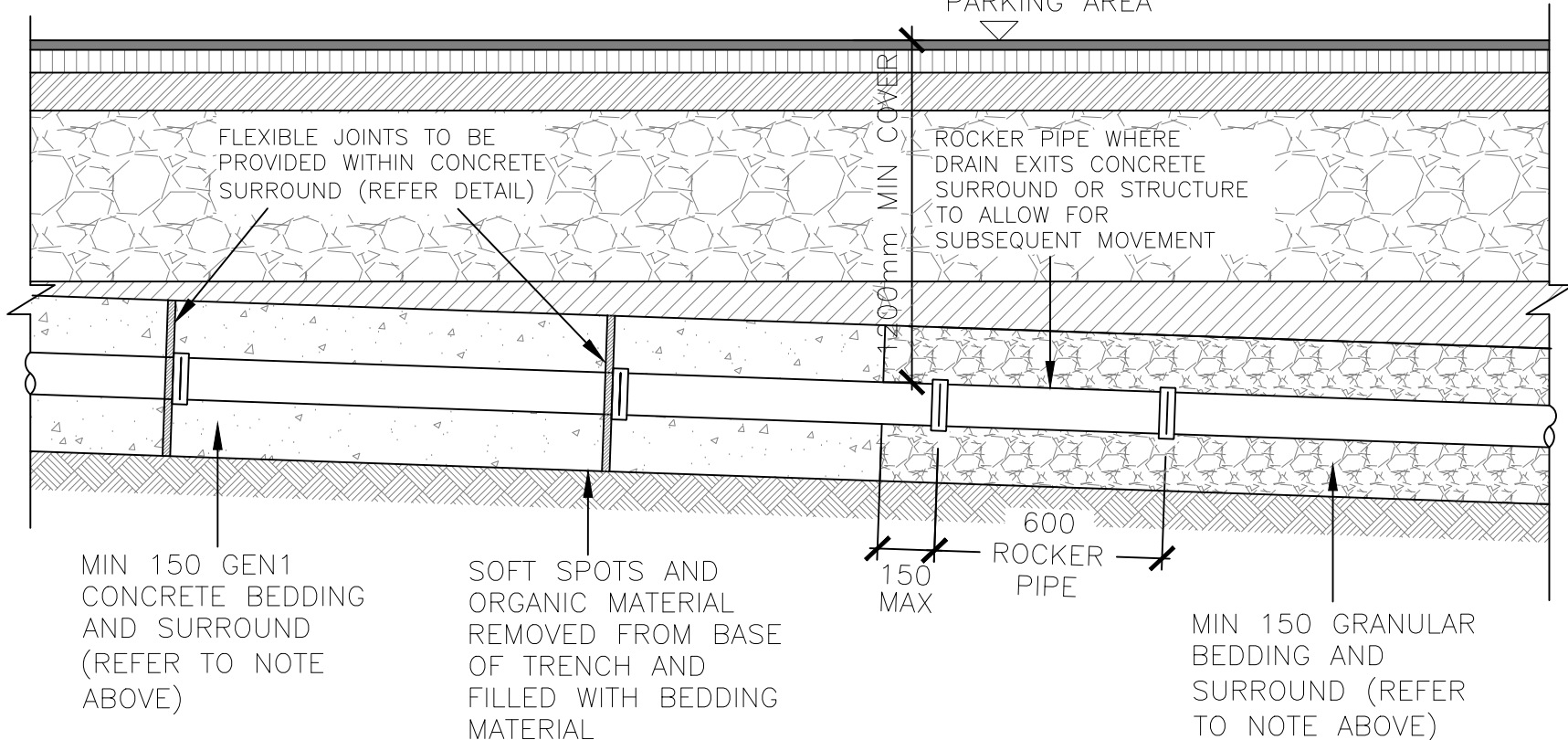
* OR LINTEL AND COMPRESSIBLE SEALANT IN ACCORDANCE WITH CLAUSE 689 OF THE SPECIFICATION.



PIPE CAST THROUGH FOUNDATION

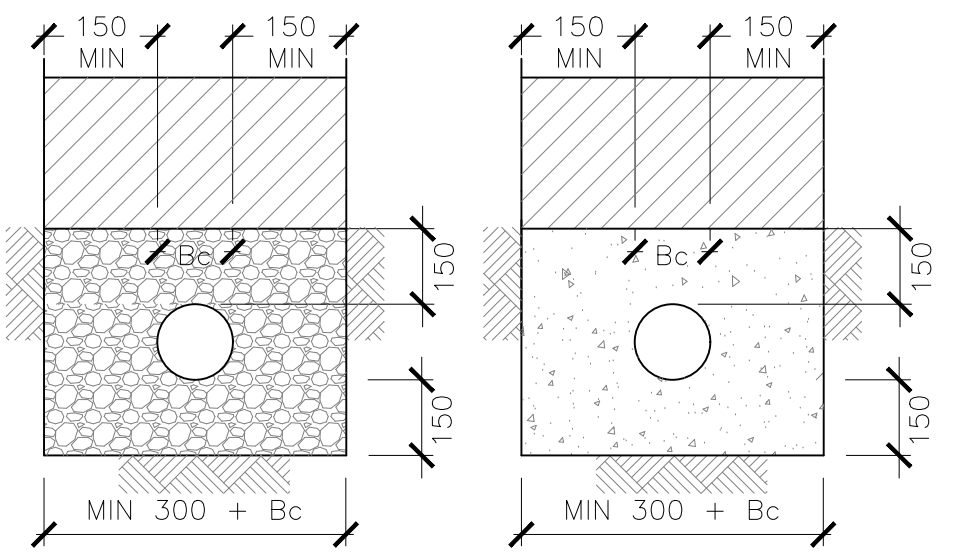
SCALE 1:20

NOTE: A 150mm GEN1 CONCRETE SURROUND SHALL BE USED ON ALL PIPE WORK PASSING BELOW GROUND BEARING FOUNDATIONS (I.E. STRIP FOOTINGS FOR LANDSCAPING WALLS / PLANTERS). 150mm GEN1 CONCRETE SURROUND SHALL BE USED ON ALL PIPE WORK (EXCEPT LAND DRAINS) WHICH ARE LESS THAN 1200mm BELOW TRAFFICABLE PAVED AREAS AND LESS THAN 600mm IN ALL OTHER EXTERNAL AREAS. ALL PIPEWORK WITHIN BUILDING FOOTPRINT TO BE BEDDED ON GEN1 CONCRETE TO A DEPTH OF AT LEAST HALF THE PIPE DIAMETER



PIPE BEDDING

SCALE 1:20



GENERAL PIPE BEDDING DETAIL

PIPE BEDDING DETAIL FOR ALL PIPES THAT PASS BELOW OR NEAR FOUNDATIONS. PIPES WITH LESS THAN 600mm COVER IN ALL EXTERNAL AREAS AND PIPES WITH LESS THAN 1200mm COVER BELOW ROADS AND DRIVEWAYS

SELECTED FILL: FREE FROM STONES LARGER THAN 40mm, LUMPS OF CLAY OVER 100mm, TIMBER, FROZEN MATERIAL, VEGETABLE MATTER.

GRANULAR MATERIAL: TO CONFORM TO BS EN 1610 ANNEX B TABLE B.15 AND SHOULD BE SINGLE SIZE MATERIAL OR GRADED MATERIAL FROM 5mm UP TO A MAXIMUM SIZE OF 10mm FOR 100mm PIPES, 14mm FOR 150mm PIPES, 20mm FOR PIPES FROM 150mm UP TO 600mm DIAMETER AND 40mm FOR PIPES MORE THAN 600mm DIAMETER.

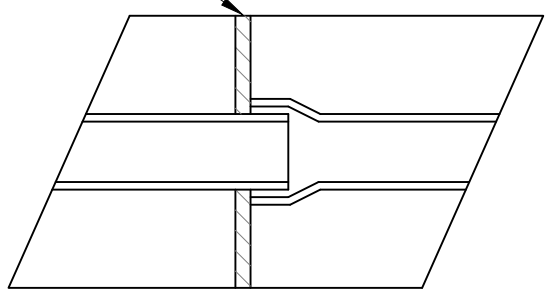
GEN1 CONCRETE IN ACCORDANCE WITH BS 8500-1:2002.

NOTE: PIPES LESS THAN 1200mm BELOW ROADS AND LESS THAN 600mm BELOW OTHER EXTERNAL AREAS SHALL HAVE A 150mm GEN1 CONCRETE SURROUND. OTHER THAN PIPES CAST WITHIN PILECAPS ALL PIPES BELOW SUSPENDED SLAB SHALL HAVE GRANULAR SURROUND AS SHOWN.

PIPE BEDDING DETAIL

SCALE 1:10

18mm MINIMUM THICK FLEXIBLE JOINTS AT 5000±/c MAXIMUM PRE-CUT TO PIPE DIAMETER AND WITH HEIGHT AND WIDTH EQUAL TO THAT OF CONCRETE PROTECTION. JOINTS TO BE FORMED OF COMPRESSIVE BOARD



FLEXIBLE JOINTS IN CONCRETE PROTECTION

SCALE 1:10

- THIS DRAWING IS TO BE READ IN CONJUNCTION WITH ALL RELEVANT SERIES DESIGN DRAWINGS, SPECIFICATIONS AND DOCUMENTATION.
- CONSTRUCTION TO BE IN ACCORDANCE WITH ALL BRITISH AND EUROPEAN STANDARDS AND BUILDING REGULATIONS.
- ALL DIMENSIONS ARE IN MILLIMETRES AND LEVELS IN METRES ABOVE LOCAL DATUM.
- ANY DISCREPANCIES IN THE DETAILS SHOWN ARE TO BE REPORTED TO THE EMPLOYER'S REPRESENTATIVE/ENGINEER PRIOR TO CONSTRUCTION
- ALL EXISTING SERVICES ARE TO BE LOCATED PRIOR TO THE COMMENCEMENT OF ANY WORKS. THE CONTRACTOR MUST NOTIFY THE ENGINEER IMMEDIATELY OF ANY CONFLICT WITH THE PROPOSED WORKS.
- FOR GRAVITY SEWERS, ALL DRAINAGE AND FITTINGS ARE TO BE FLEXIBLY JOINTED UPVC TO BS EN 1401-1 OR CLAYWARE TO BS EN295 OR CONCRETE TO BS5911 PART 100
- CHAMBER WALLS 225 THICK TO BE CONSTRUCTED IN CLASS B ENGINEERING BRICKS TO SHW SERIES 2400 IN DESIGNATION (i) MORTAR OR IN-SITU STRENGTH CLASS C16/20 CONCRETE TO CLAUSE 2602
- CHAMBER WALLS AND COVER SLAB TO BE CONSTRUCTED IN PRECAST CONCRETE TO BS EN 1917 AND BS 5911-3.
- CONCRETE MIXES INDICATED ON THIS DRAWING ARE DESIGNATED MIXES IN ACCORDANCE WITH BS8500-1:2006. ALL CONCRETE TO BE SULPHATE RESISTANT
- BACKFILL TO ALL TRENCHES UNDER CARRIAGEWAYS TO BE TYPE 1 SUB-BASE MATERIAL, ELSEWHERE BACKFILL TO BE IN ACCORDANCE WITH THE SPECIFICATION, FREE DRAINING READILY COMPACTABLE MATERIAL, FREE FROM RUBBISH AND ORGANIC MATTER, FROZEN SOIL CLAY LUMPS AND LARGE STONES. TO BE COMPACTED IN LAYERS NOT EXCEEDING 150mm THICK.
- A FLEXIBLE JOINT SHALL BE PROVIDED AS CLOSE AS IS FEASIBLE TO OUTSIDE FACE OF ANY STRUCTURE INTO WHICH A PIPE IS BUILT, IN ACCORDANCE WITH THE DETAIL.
- THE GENERAL SPECIFICATION OF MATERIALS AND WORKMANSHIPS FOR THE CONSTRUCTION OF THE ACCESS ROAD, FOOTPATHS AND OTHER AREAS OF HARDSTANDING SHALL BE THE MANUAL OF CONTRACT DOCUMENTS FOR HIGHWAY WORKS, VOLUME 1. SPECIFICATION OF HIGHWAY WORKS (SHW) PUBLISHED BY THE STATIONARY OFFICE.
- ALL PIPES TO BE LAID SOFFIT TO SOFFIT UNLESS NOTED OTHERWISE.
- MANHOLE COVERS AND FRAMES SHALL COMPLY WITH BS EN124 AND SHALL BE OF A NON-ROCKING DESIGN WHICH DOES NOT RELY ON THE USE OF CUSHION INSERTS. CLASS D COVERS SHALL BE USED IN CARRIAGEWAYS, HARD SHOULDERS AND PARKING AREAS USED BY ALL TYPE OF ROAD VEHICLES. CLASS C SHALL BE USED IN FOOTWAYS, PEDESTRIAN AREAS AND ALL COMPARABLE LOCATIONS.

T01	TENDER ISSUE	AW	OR	29.03.23
Rev	Description	Eng	Draft	Date



Project
PROPOSED EXTENSION, JUBILEE HALL, ANSTEY

Title
CONSTRUCTION DETAILS 1

Scale : A1	Drawn	Authorised
AS SHOWN	CR	AW
Job No	Drawing No	Revision
20-270	C02	T1