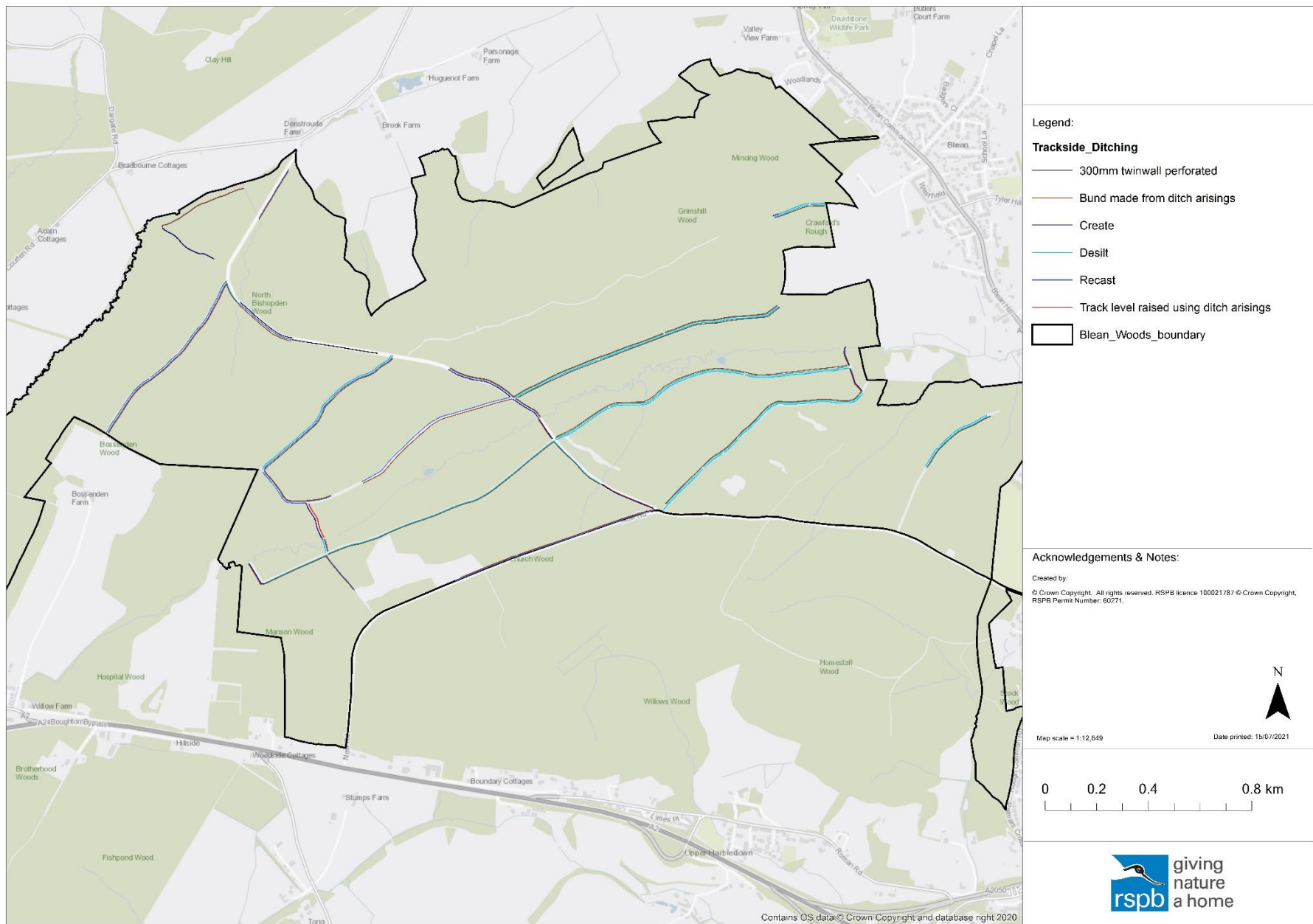
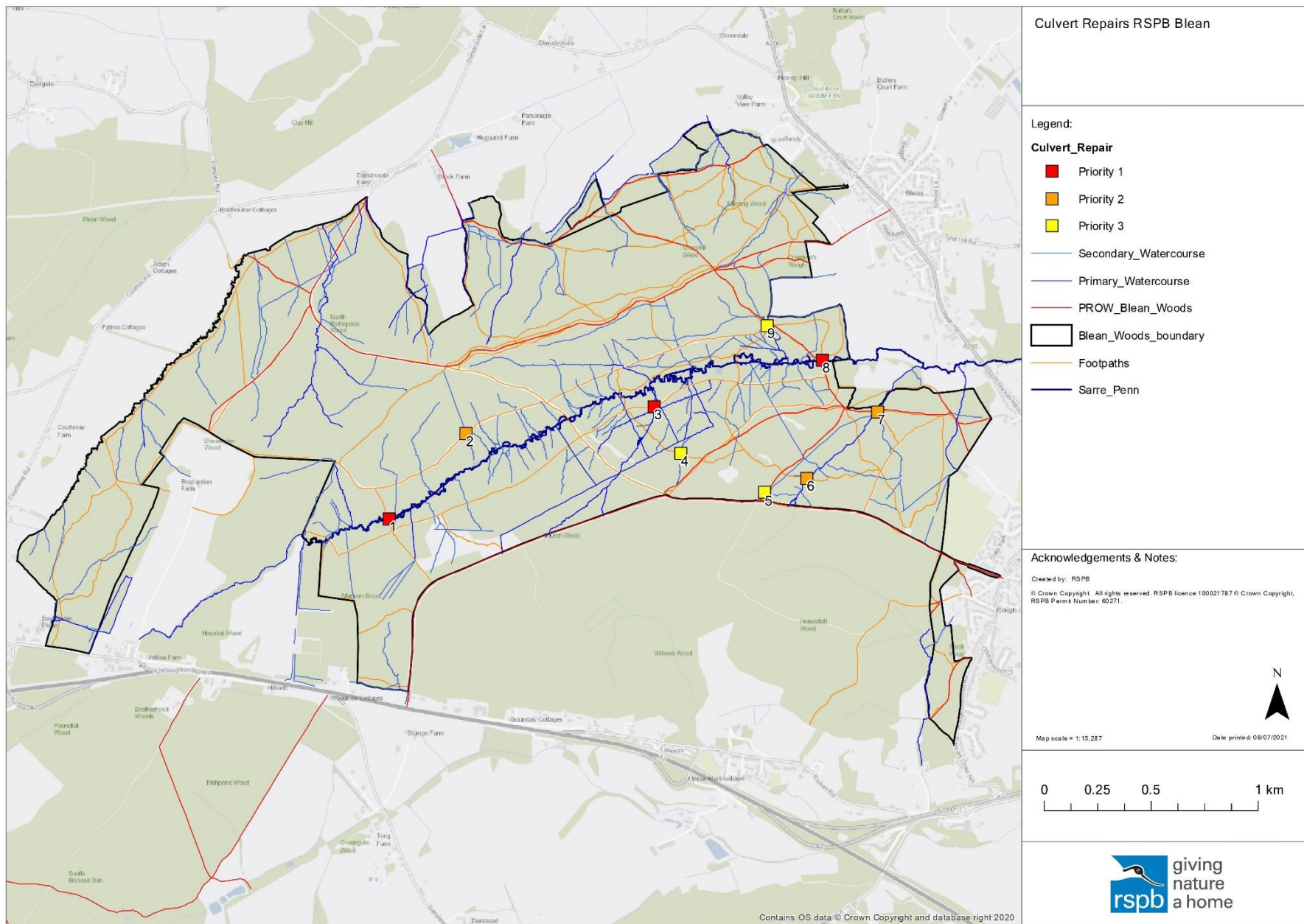


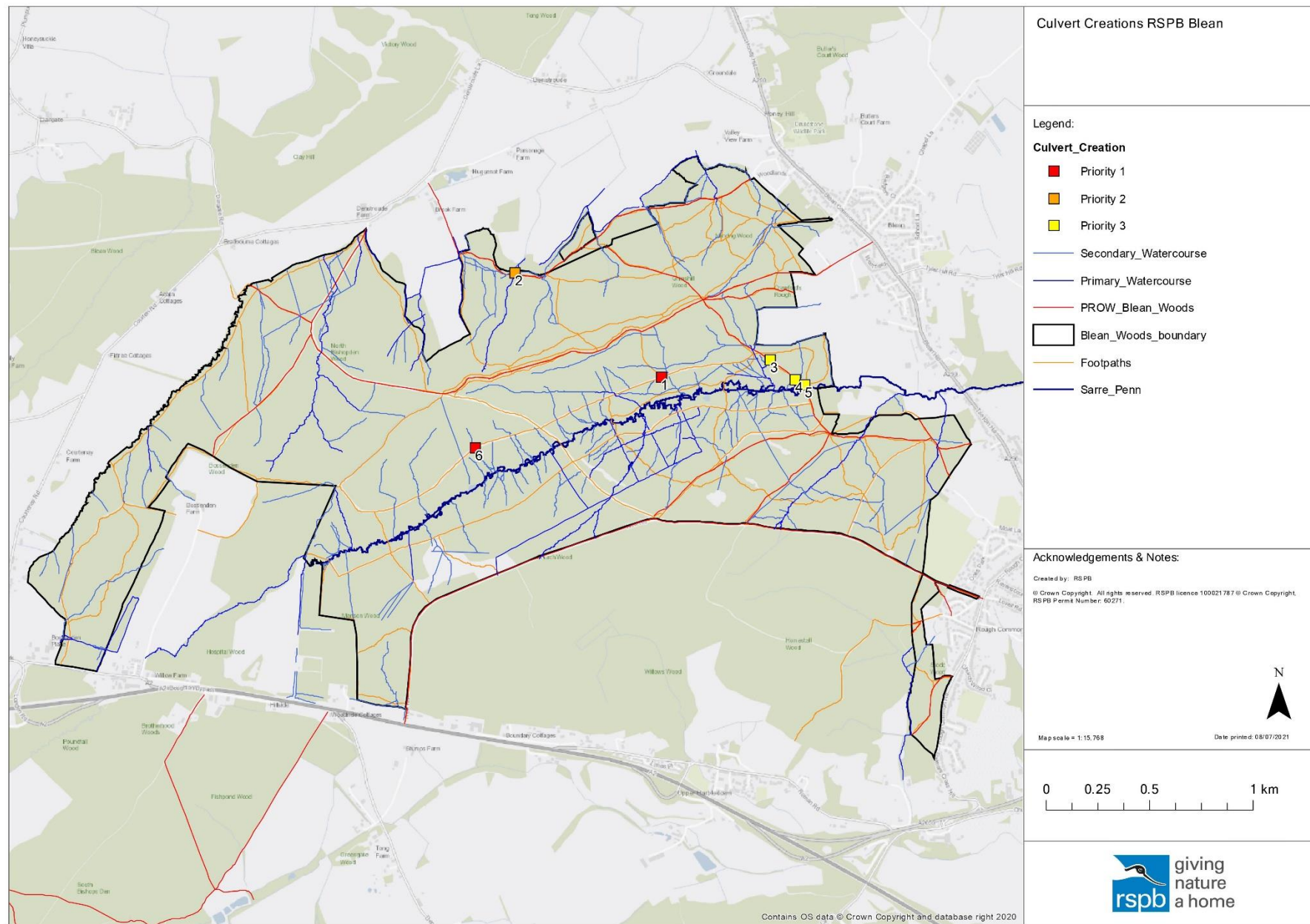
Map 1 RSPB Blean access map showing entrances to site and footpaths



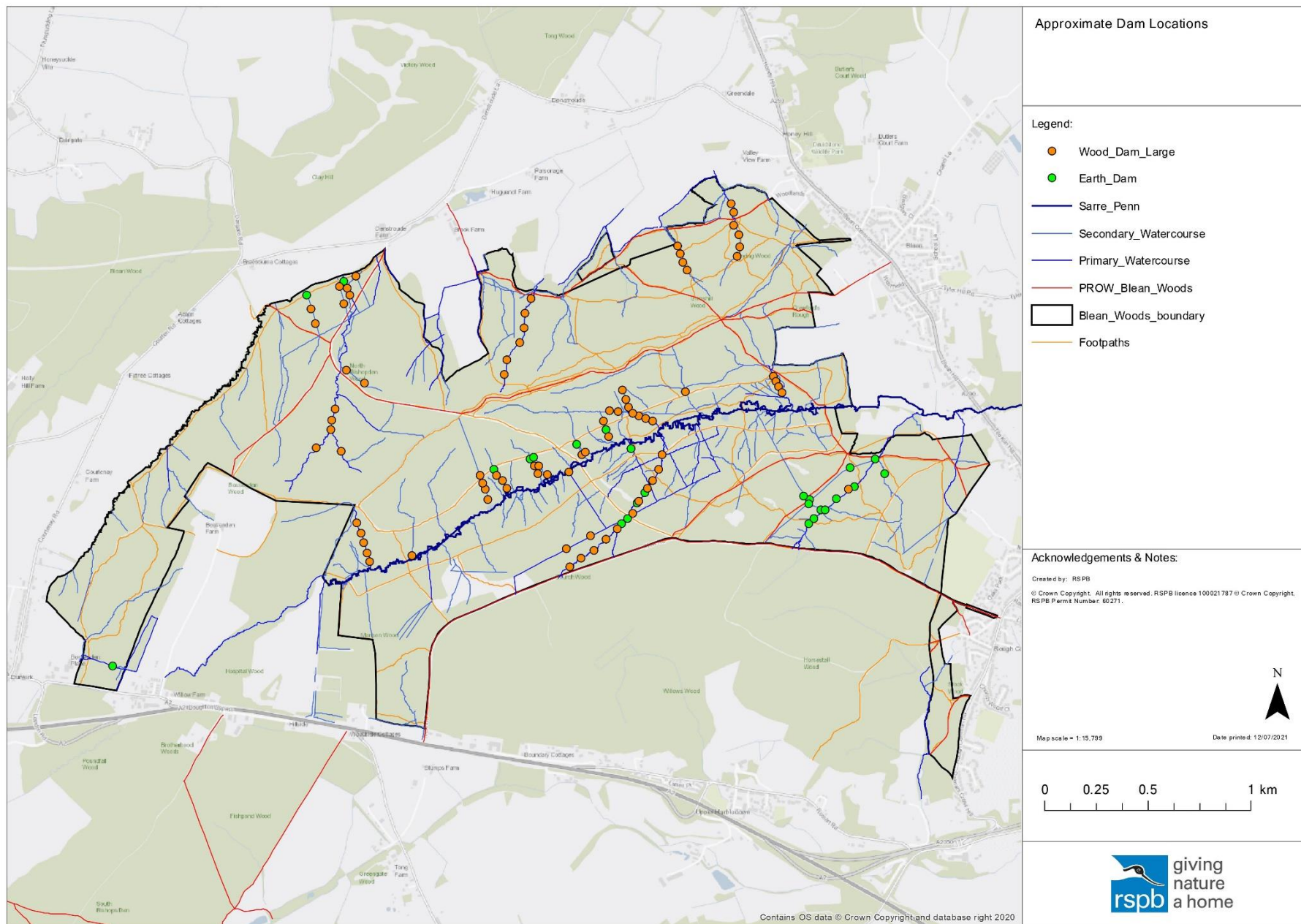
Map 2 Locations of desilting, recasting, ditch creation, french drain creation and bunds made from arisings



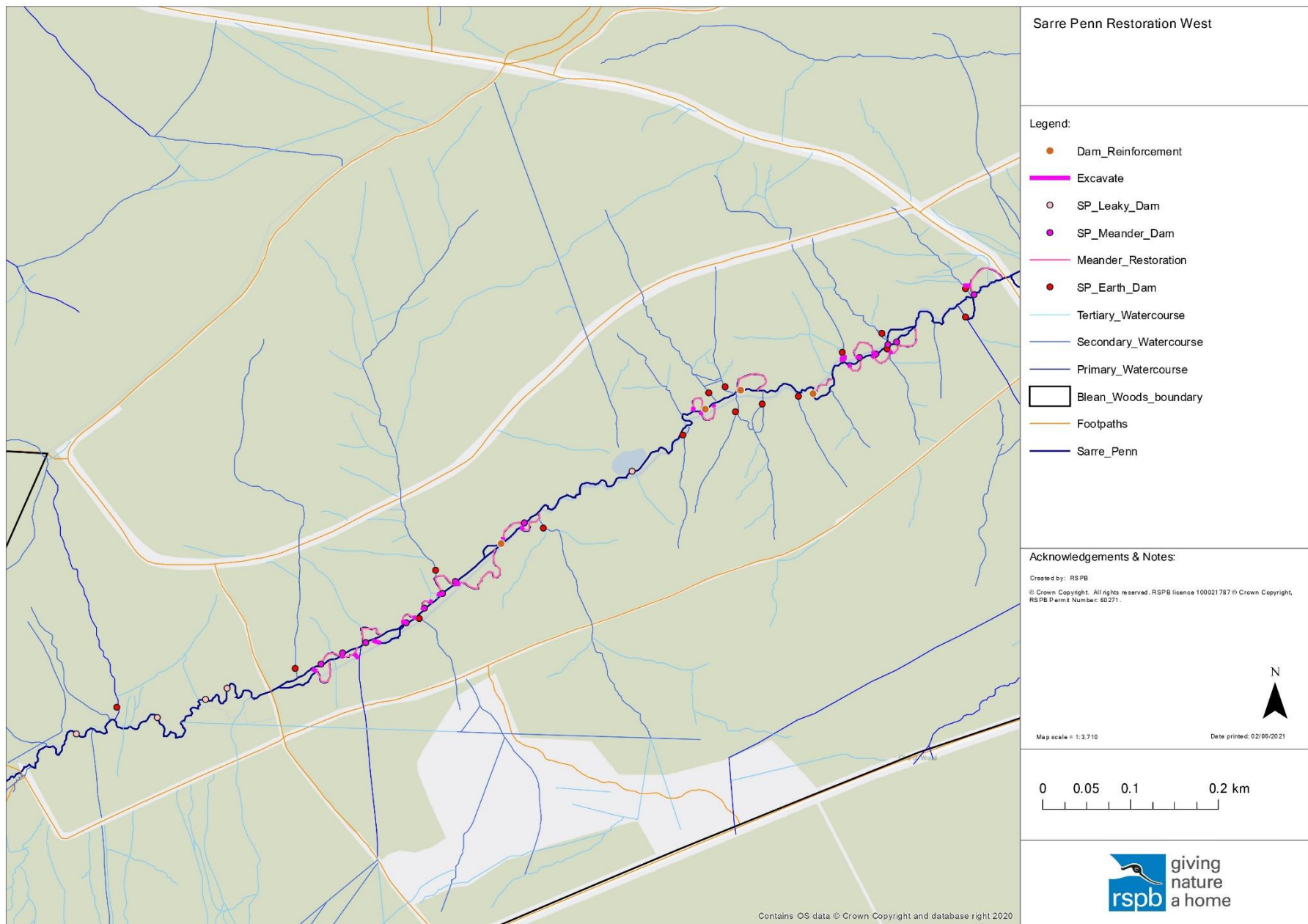
Map 3 Culvert repair locations at RSPB Blean



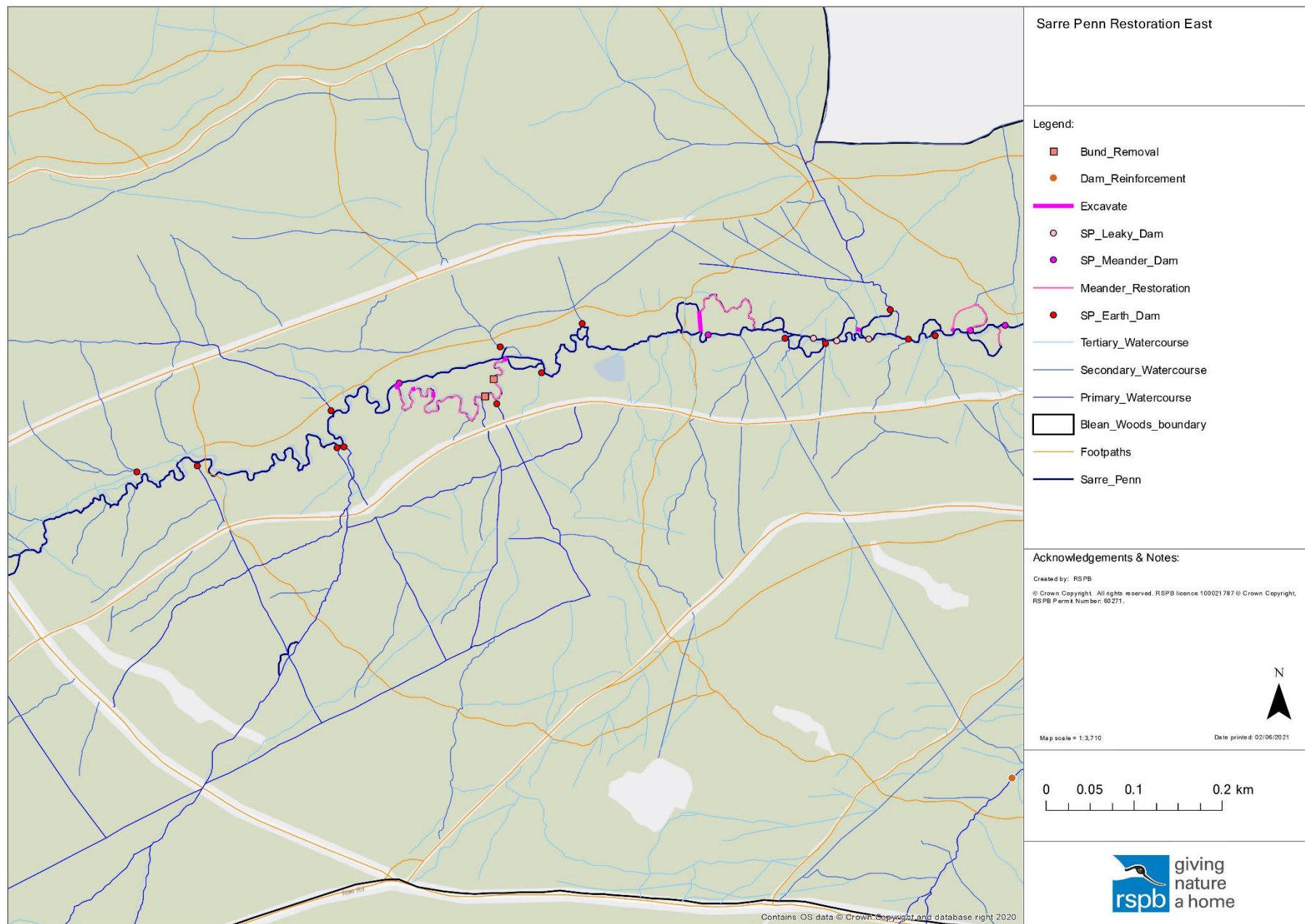
Map 4 Culvert creation locations at RSPB Blean



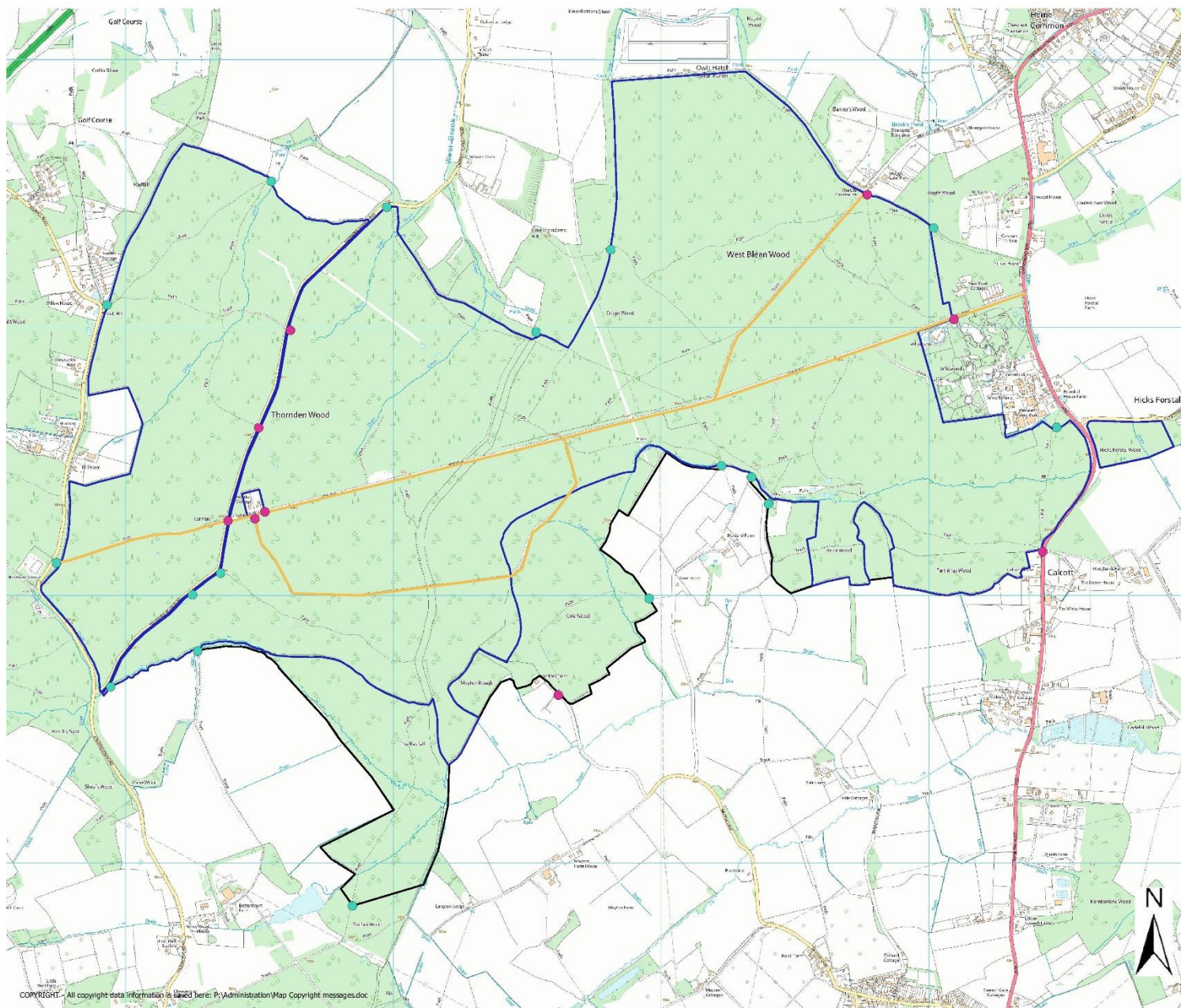
Map 5 Approximate locations for NFM work at RSPB Blean



Map 6 Western side of the Sarre Penn restoration plans



Map 7 Eastern side of the Sarre Penn restoration plans



Map 1.05 West Blean General Access

Map of West Blean and Thornden Woods currently available access as of 2021.

- KWT Reserve Boundary
- SEW Project areas

ACCESS

West Blean Reserve Entrances

- Pedestrian
- Vehicle
- Surfaced tracks

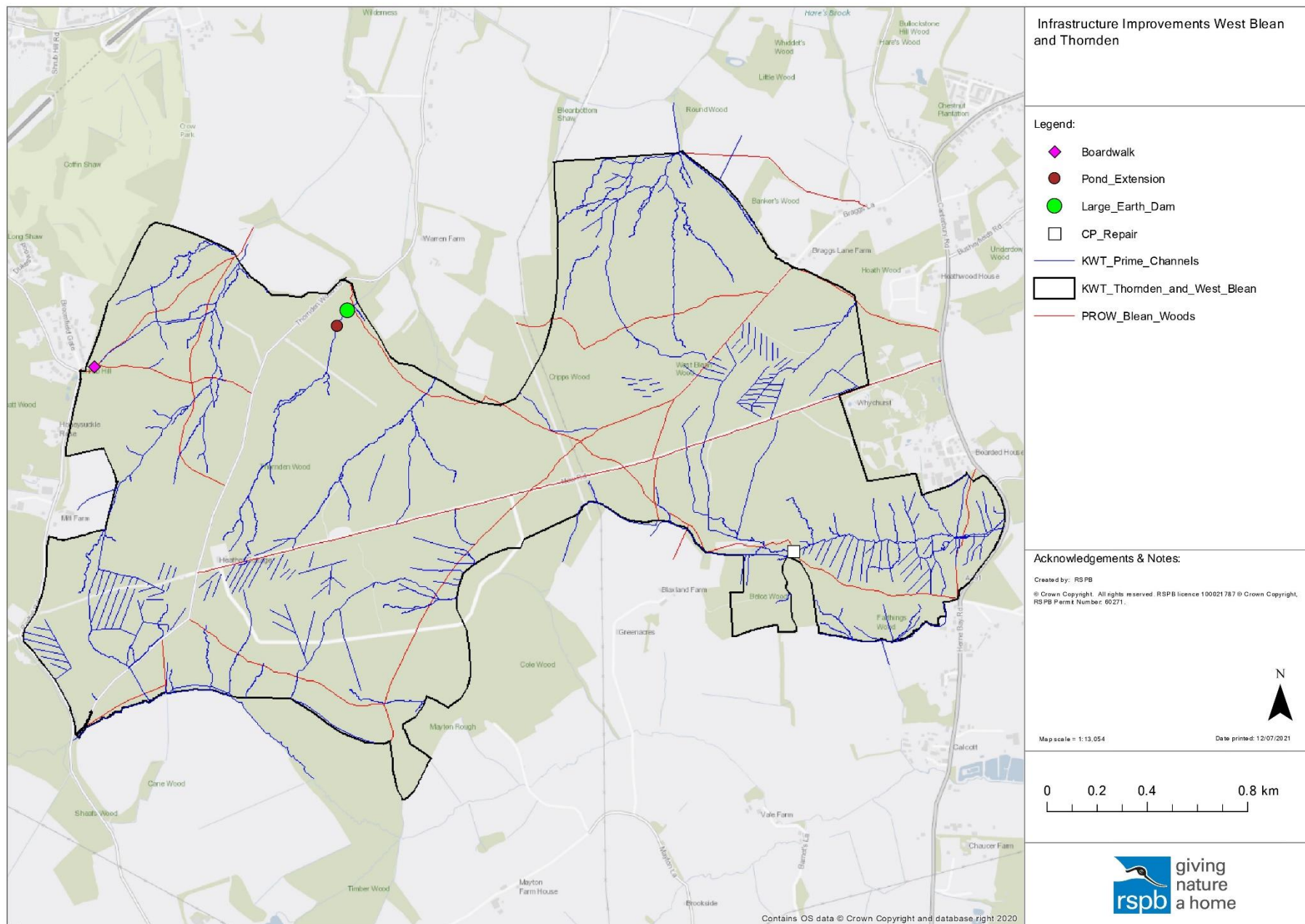
0 250 500 m

Drawn by William Douglas
Date drawn 06/04/2021
Scale at A3:
1:13000

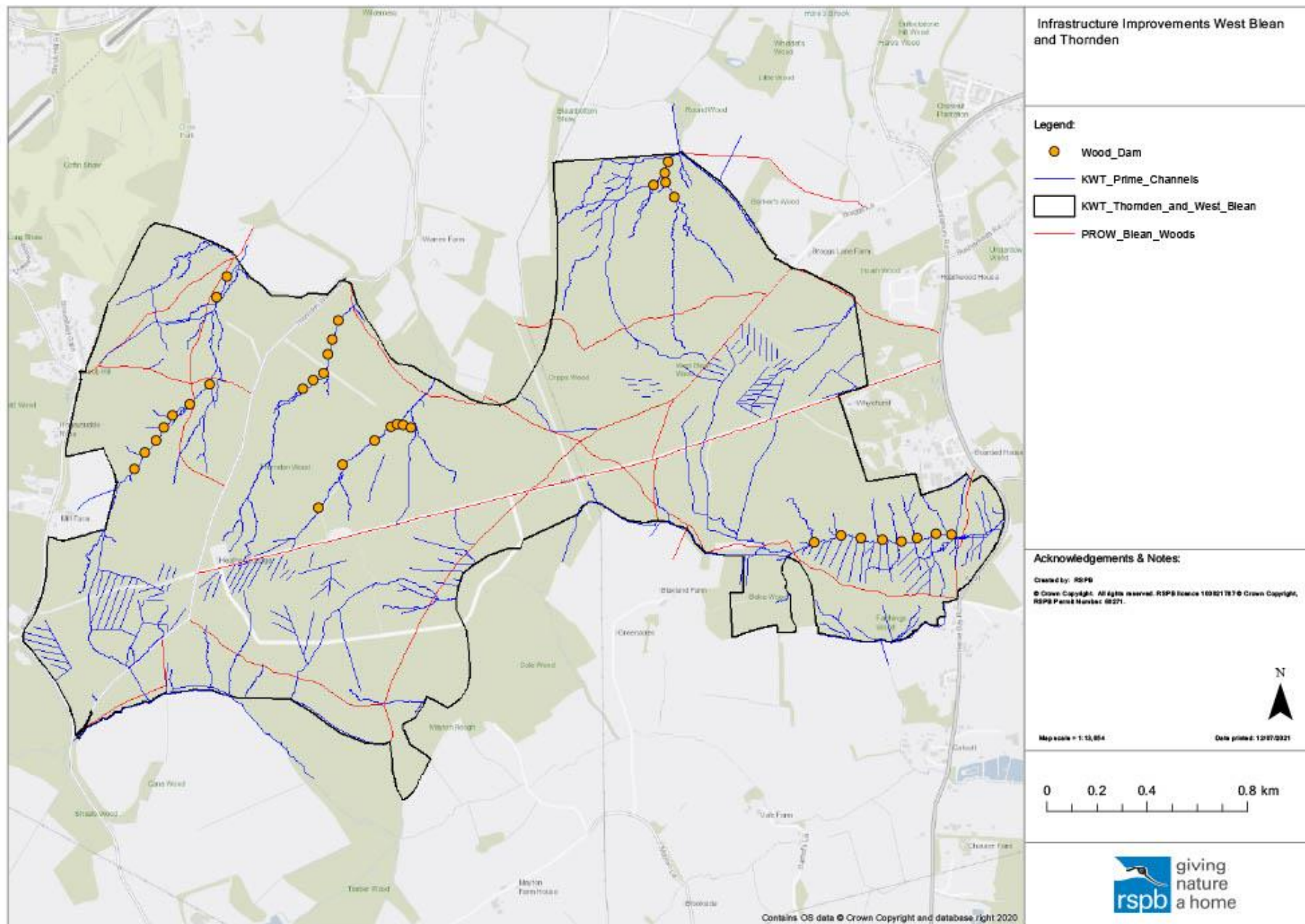


COPYRIGHT - All copyright data information is owned here: P:\Administration\Map Copyright messages.doc

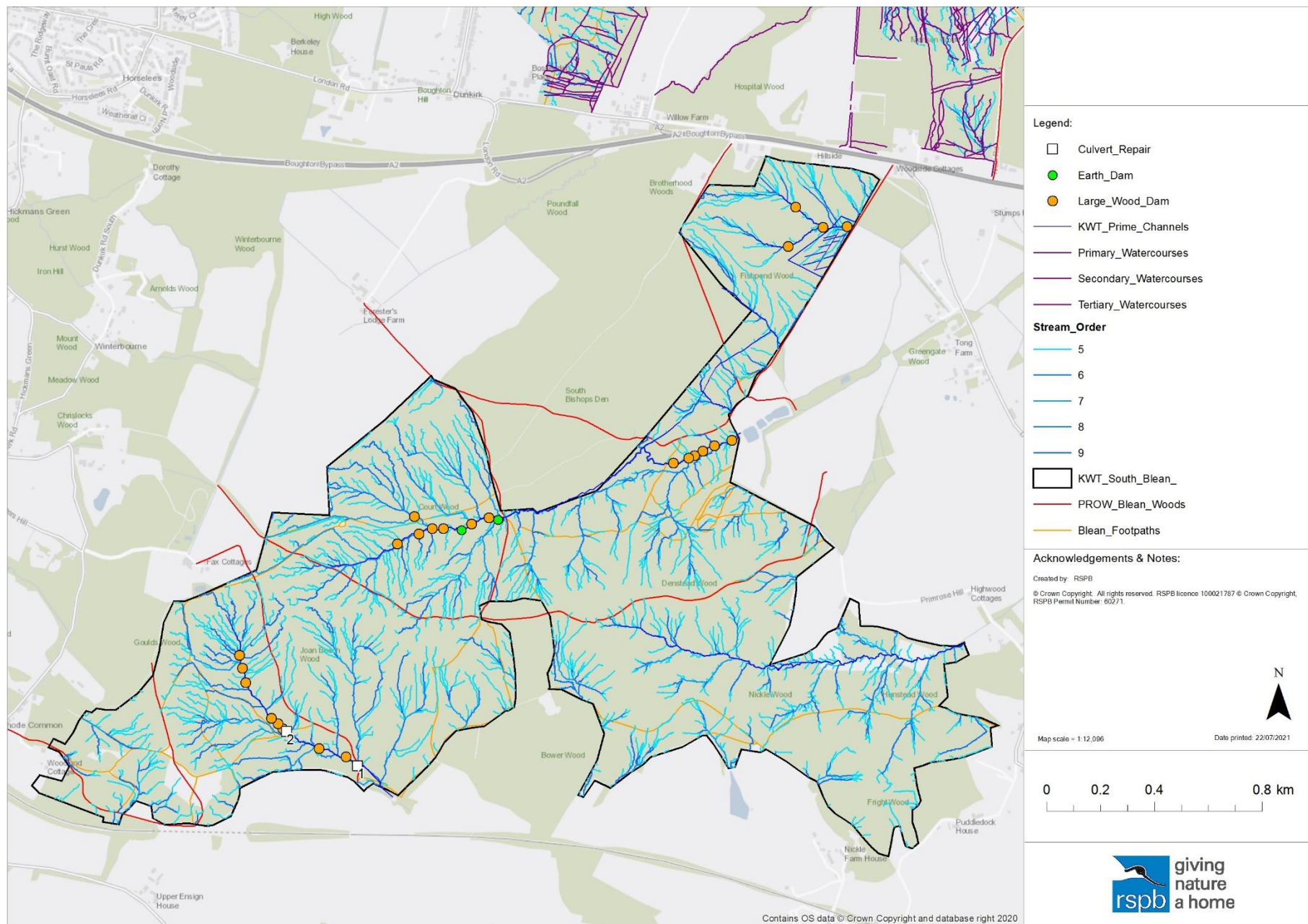
Map 8 Access map for West Blean and Thornden Woods



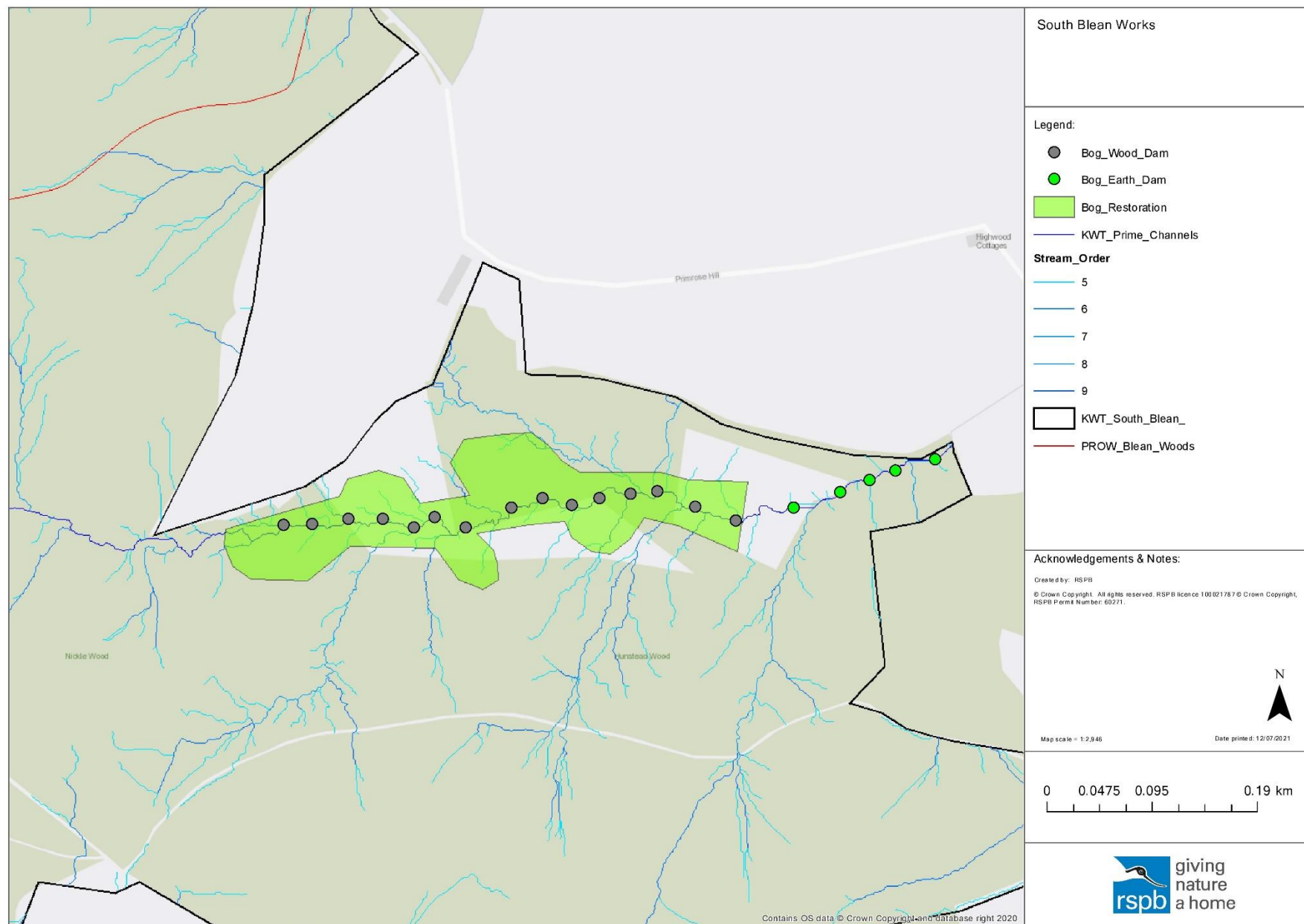
Map 9 Locations of infrastructure works at West Blean and Thornden



Map 10 Approximate locations of large wood dams at West Blean and Thornden



Map 11 Approximate locations of wood dams, earth dams and culvert repairs at South Blean



Mapp 12 Approximate location of bog restoration work - illustrative only to capture a visual representation of work locations