

Revision	Date	Comments
DO NOT SCALE FROM THIS DRAWING		

PRELIMINARY

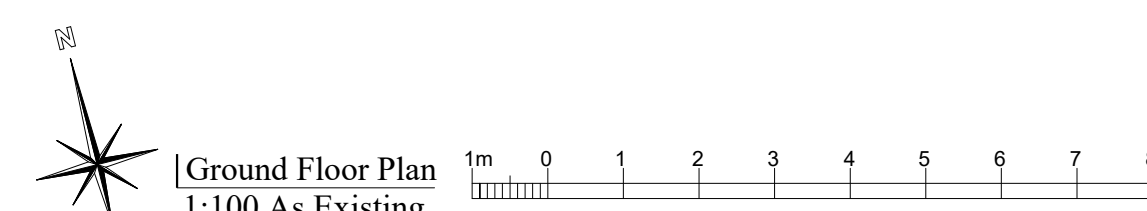
St. Osyth Priory, Essex  
Repairs & Alterations to the  
Tithe barn, Dairy & Cart Lodge  
Ground Floor Plan - Repairs

CARDEN & GODFREY  
Architects

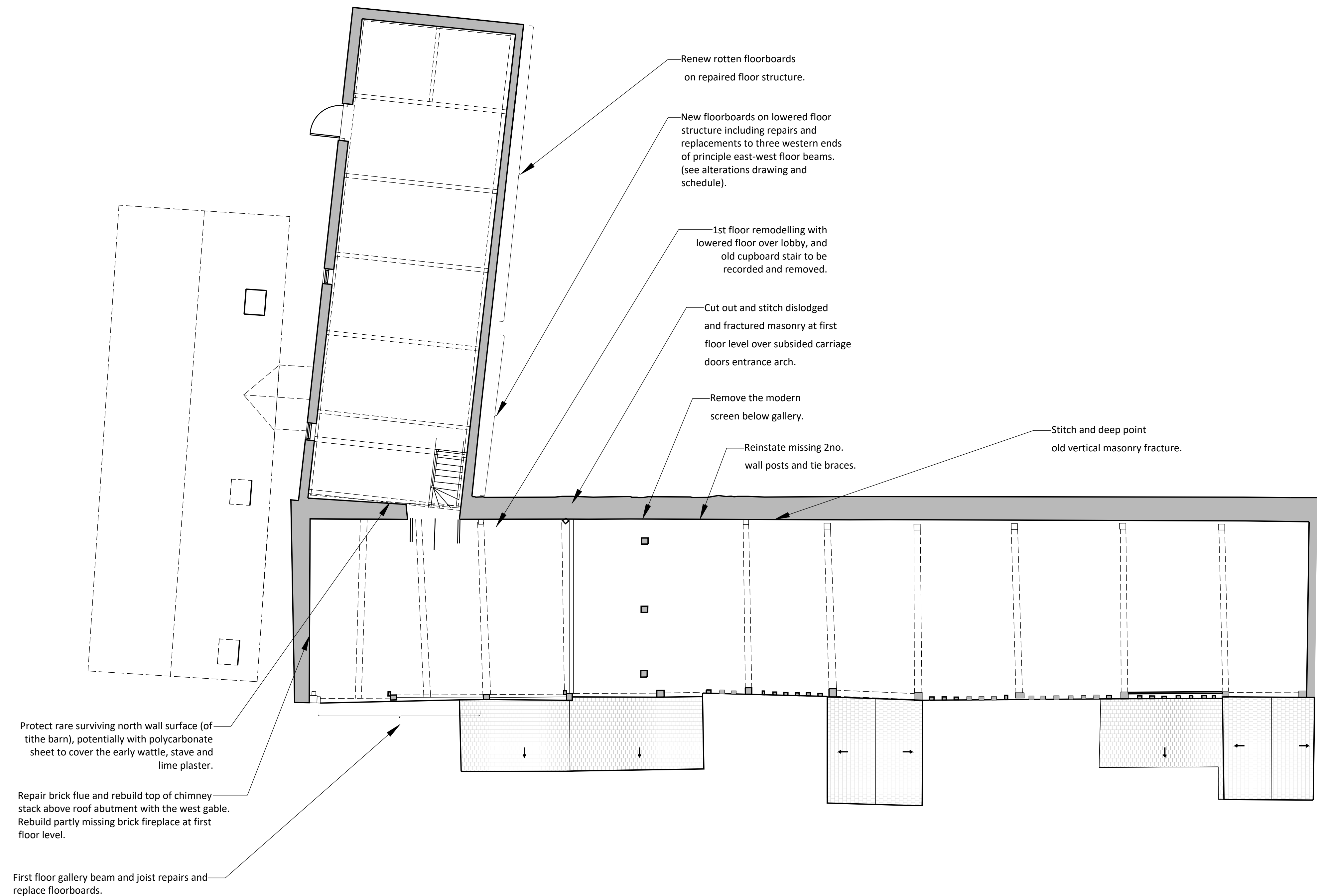
Carden & Godfrey Limited  
33 Clerkenwell Close  
London EC1R 0AU  
Telephone: 020 7490 0300  
Facsimile: 020 7490 0044  
mail@cardenandgodfrey.co.uk

Scale	Size	Date	Drawn	No.	Rev.
1:100	A1	Sep. 22	MS	5125-1-11	-

© Carden & Godfrey Ltd own the copyright of this drawing and design which must not be reproduced in whole or part without the written permission of Carden & Godfrey Ltd



Ground Floor Plan  
1:100 As Existing



Revision	Date	Comments
DO NOT SCALE FROM THIS DRAWING		

PRELIMINARY

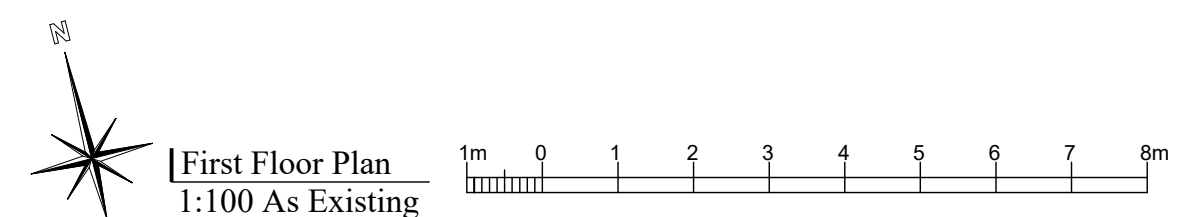
St. Osyth Priory, Essex  
Repairs & Alterations to the  
Tithe barn, Dairy & Cart Lodge  
First Floor Plan - Repairs

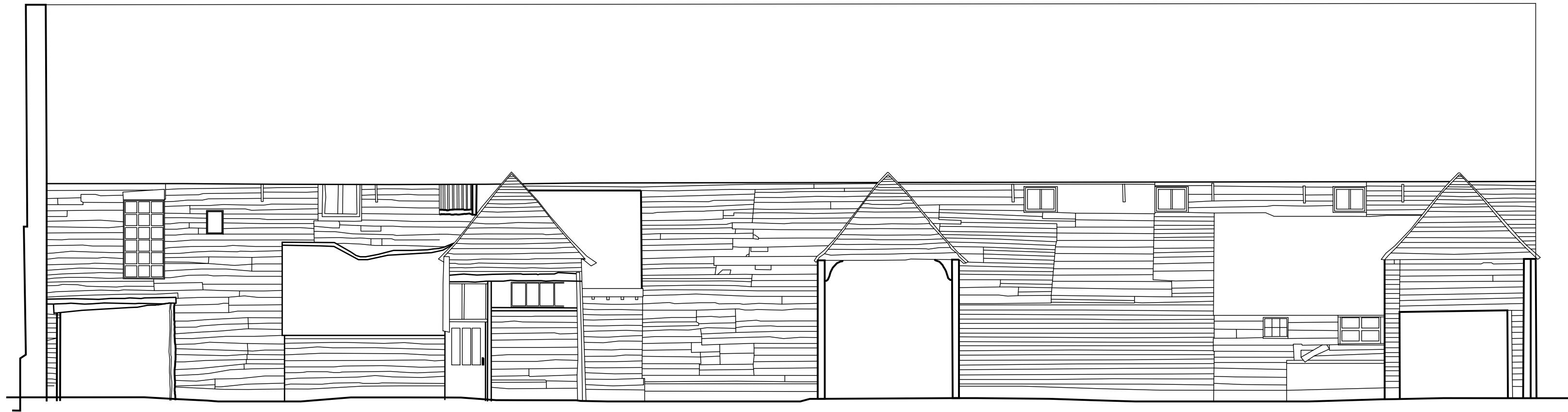
CARDEN & GODFREY  
Architects

Carden & Godfrey Limited  
33 Clerkenwell Close  
London EC1R 0AU  
Telephone: 020 7490 0300  
Facsimile: 020 7490 0004  
mail@cardenandgodfrey.co.uk

Scale	Size	Date	Drawn	No.	Rev.
1:100	A1	Sep. 22	MS	5125 -1-12	-

© Carden & Godfrey Ltd own the copyright of this drawing and design which must not be reproduced in whole or part without the written permission of Carden & Godfrey Ltd





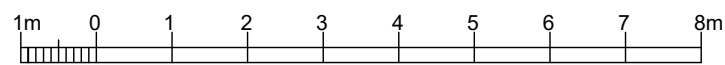
South Elevation  
1:100 As Existing



Internal elevation - North  
1:100 As Existing



Internal elevation - South  
1:100 As Existing



Revision Date Comments  
**DO NOT SCALE FROM THIS DRAWING**

PRELIMINARY

St. Osyth Priory, Essex  
Repairs & Alterations to the  
Tithe barn, Dairy & Cart Lodge  
Tithe Barn Elevations As Existing

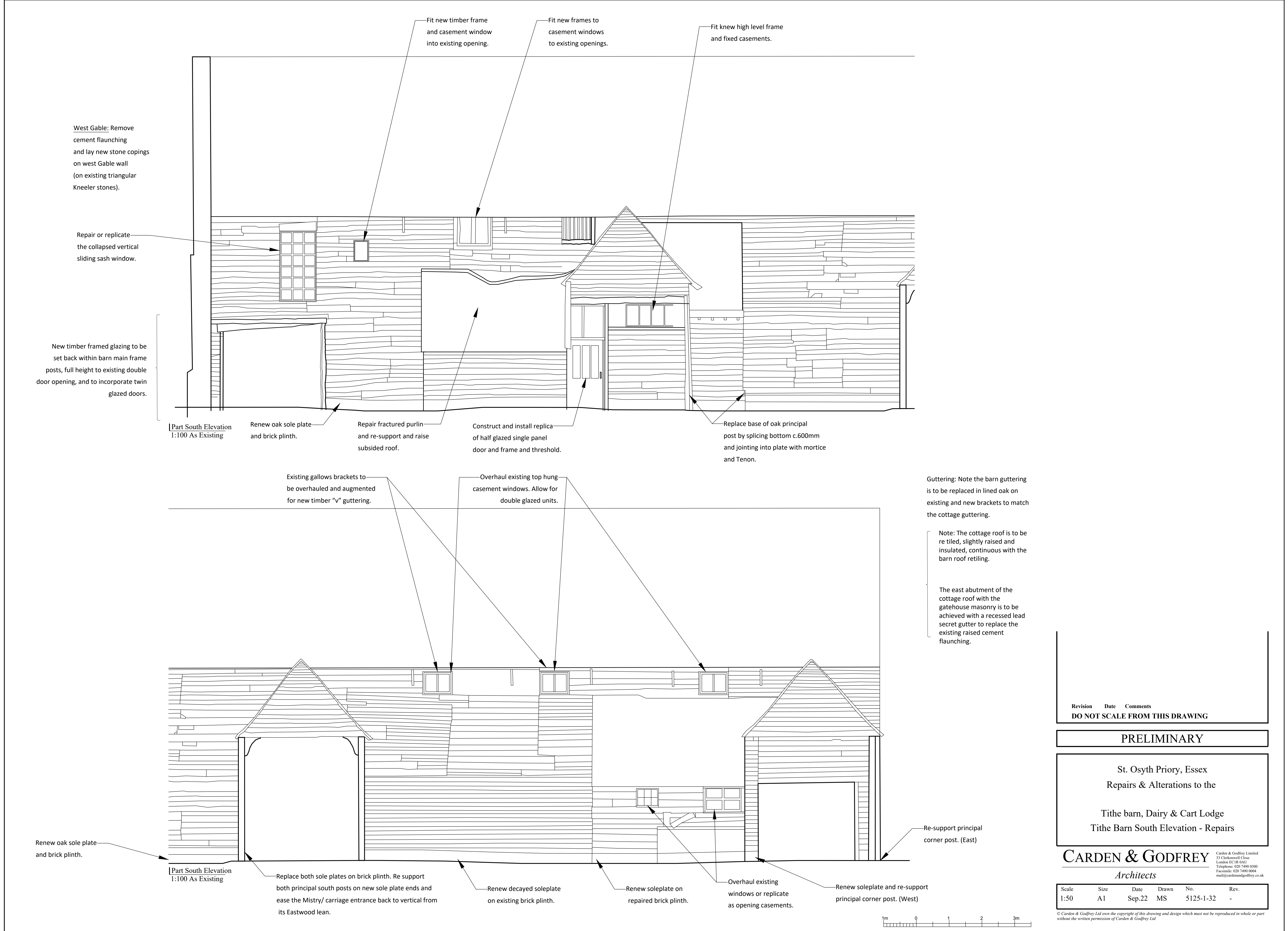
CARDEN & GODFREY

Architects

Carden & Godfrey Limited  
33 Clerkenwell Close  
London EC1R 0AU  
Telephone: 020 7490 0300  
Facsimile: 020 7490 0004  
mail@cardenandgodfrey.co.uk

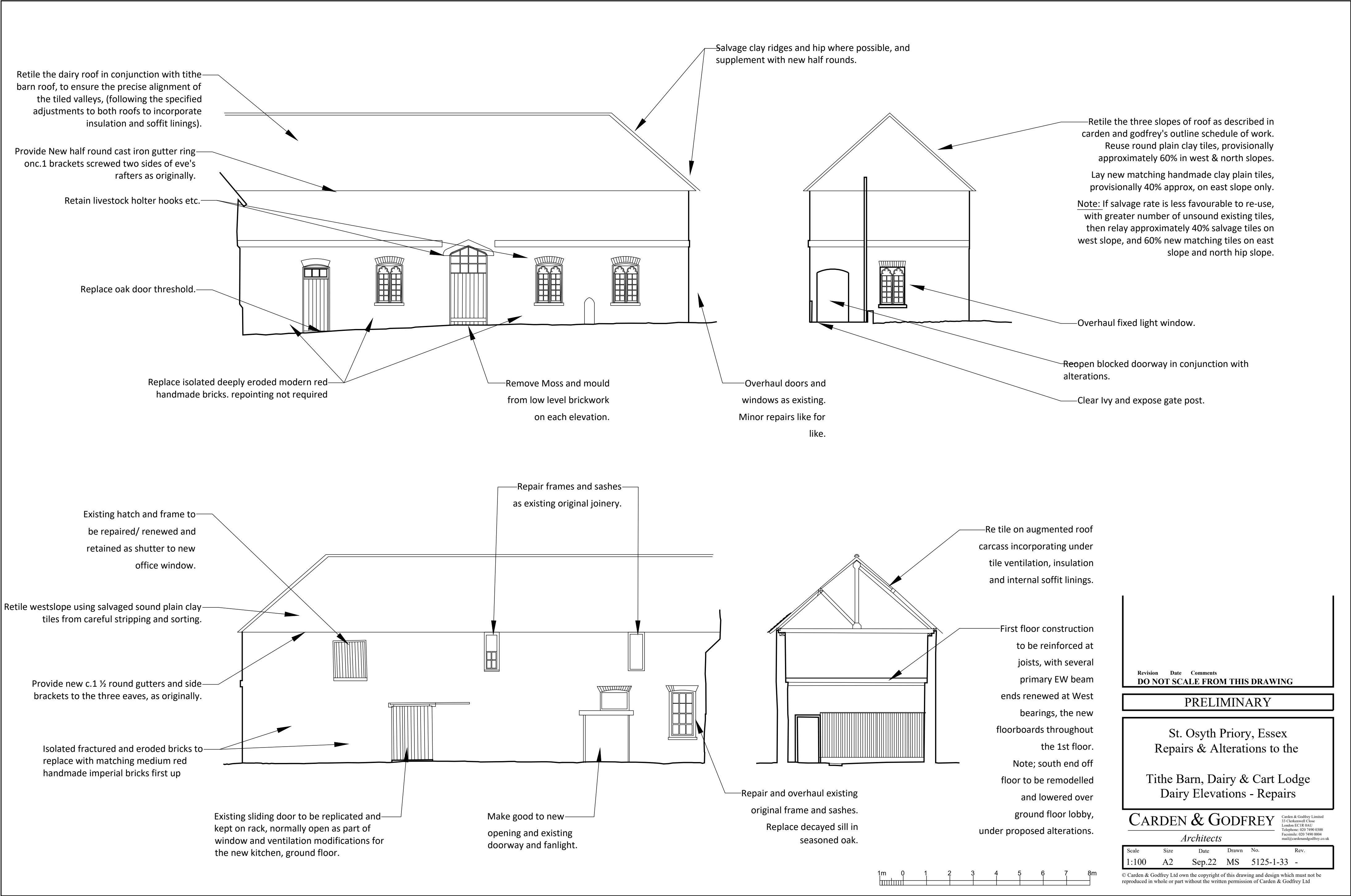
Scale	Size	Date	Drawn	No.	Rev.
1:100	A1	Sep. 22	MS	5125-1-31	-

© Carden & Godfrey Ltd own the copyright of this drawing and design which must not be reproduced in whole or part without the written permission of Carden & Godfrey Ltd



Revision	Date	Comments			
<b>DO NOT SCALE FROM THIS DRAWING</b>					
<b>PRELIMINARY</b>					
St. Osyth Priory, Essex					
Repairs & Alterations to the					
Tithe barn, Dairy & Cart Lodge					
Tithe Barn South Elevation - Repairs					
<b>CARDEN &amp; GODFREY</b> <i>Architects</i>					
Scale 1:50	Size A1	Date Sep.22	Drawn MS	No. 5125-1-32	Rev. -

© Carden & Godfrey Ltd own the copyright of this drawing and design which must not be reproduced in whole or part without the written permission of Carden & Godfrey Ltd



Revision	Date	Comments
<b>DO NOT SCALE FROM THIS DRAWING</b>		
<b>PRELIMINARY</b>		
<b>St. Osyth Priory, Essex</b>		
<b>Repairs &amp; Alterations to the</b>		
<b>Tithe Barn, Dairy &amp; Cart Lodge</b>		
<b>Dairy Elevations - Repairs</b>		
<b>CARDEN &amp; GODFREY</b>		
<i>Architects</i>		
Scale	Size	Date
1:100	A2	Sep.22

Carden & Godfrey Limited  
33 Clerkwell Close  
London EC1R 0AU  
Telephone: 020 7490 0300  
Facsimile: 020 7490 0004  
mail@cardenandgodfrey.co.uk

© Carden & Godfrey Ltd own the copyright of this drawing and design which must not be reproduced in whole or part without the written permission of Carden & Godfrey Ltd

Retile the cart lodge roof as described in C&G's outline schedule of work. Provisionally reuse existing inter-locking tiles on westslope, supplemented by new matching Belgian interlockers on east slope.

Renew south gable weatherboarding like for like on modified frame assembly incorporating internal linings and insulation.

Provide new cast iron guttering on east eaves (where not infilled by proposed extension and link with dairy). See concept design drawings.

External shingle ground level to be lowered either side of reopened link doorway.

Eastside soleplate to be replaced entirely, full length on new raised brick plinth wall on existing foundations. Each principal post is to be repaired at decayed base by splicing new seasoned oak extensions to sound truncated posts and forming Mortice and Tenon joints into the new soleplate.

Renew weather boards like for like on north elevation Gable. Retain central hatch provisionally glazed.

Label, plot and salvage existing weatherboarding for reinstatement on modified frame assembly, incorporating insulation and internal linings.

West side sole plates to be renewed 100% on new handmade brick plinth wall, to match detail at south end. Assumed splicing in of principle frame post based extensions on each Bay, jointed into new sole plate, Therefore all new oak to new oak carpentry.

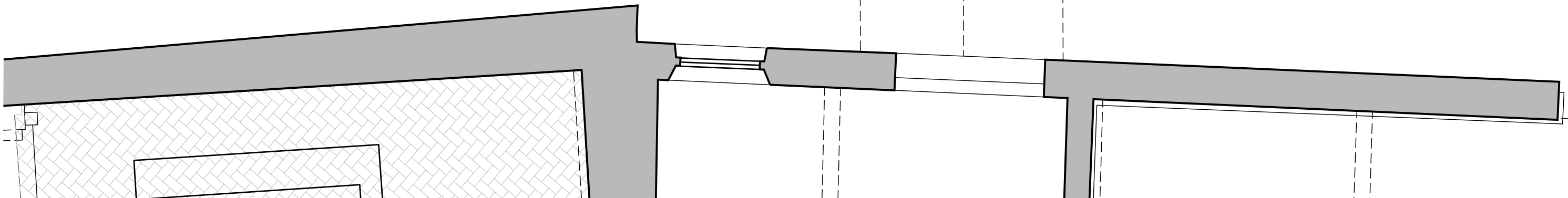
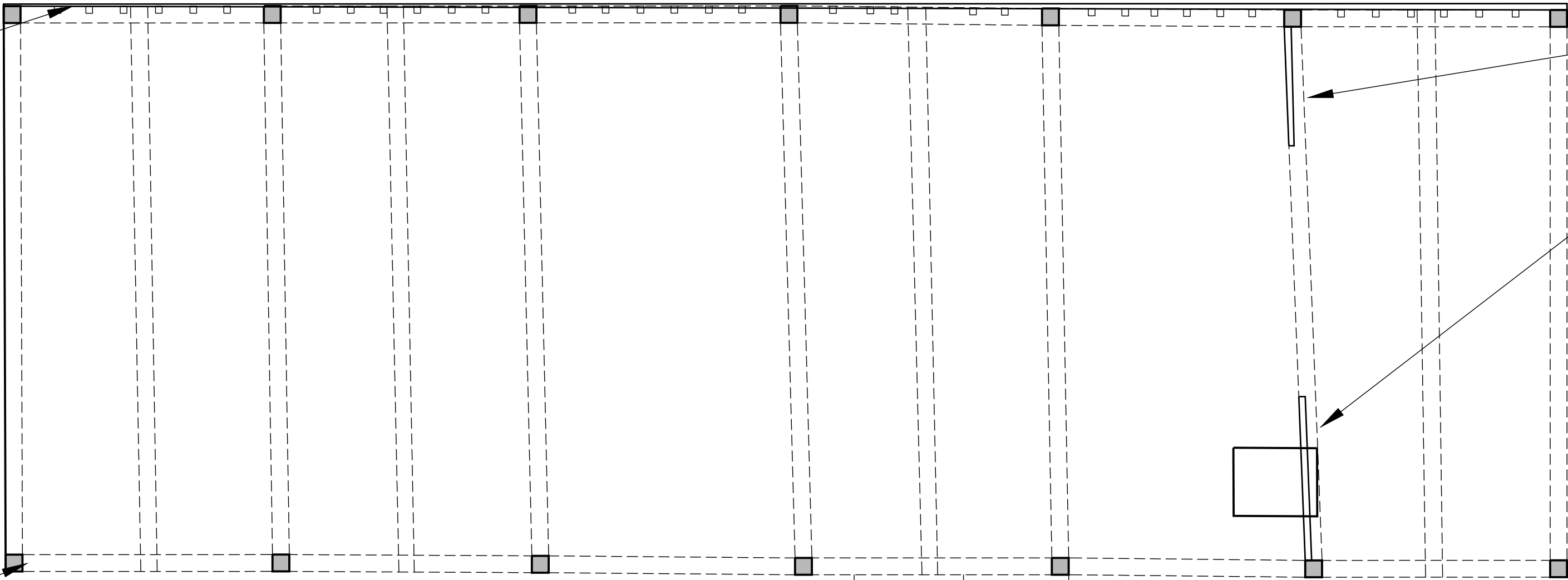
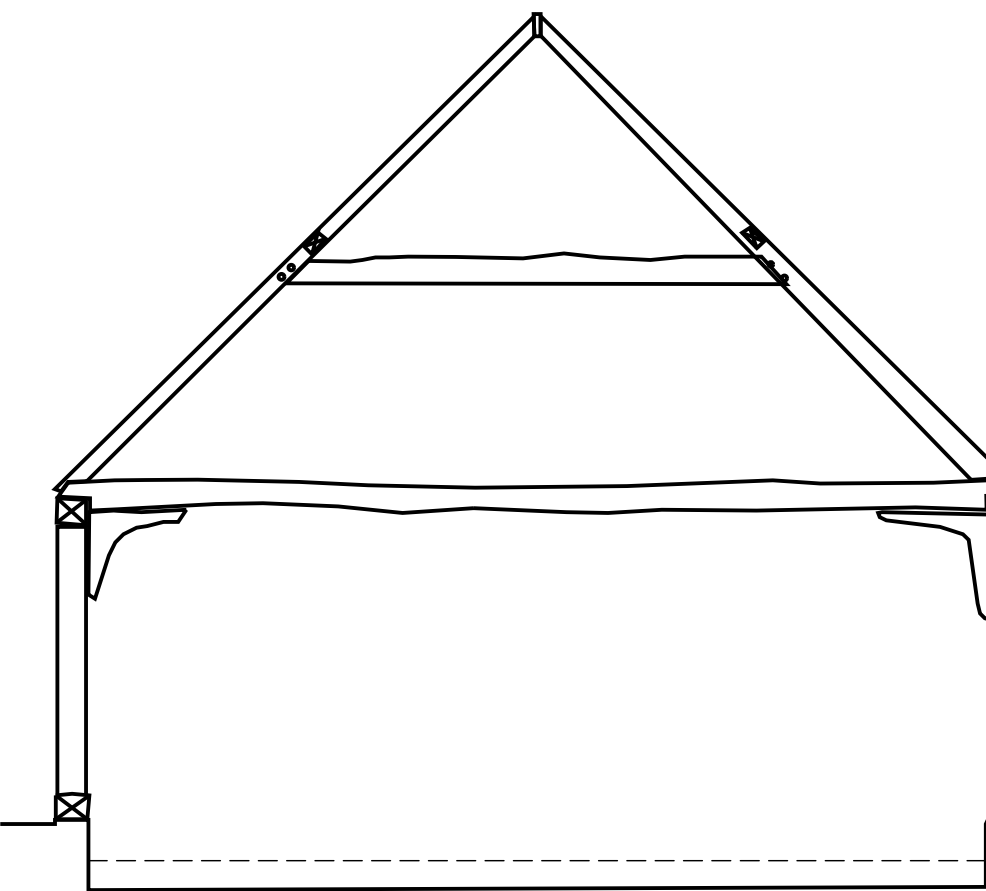
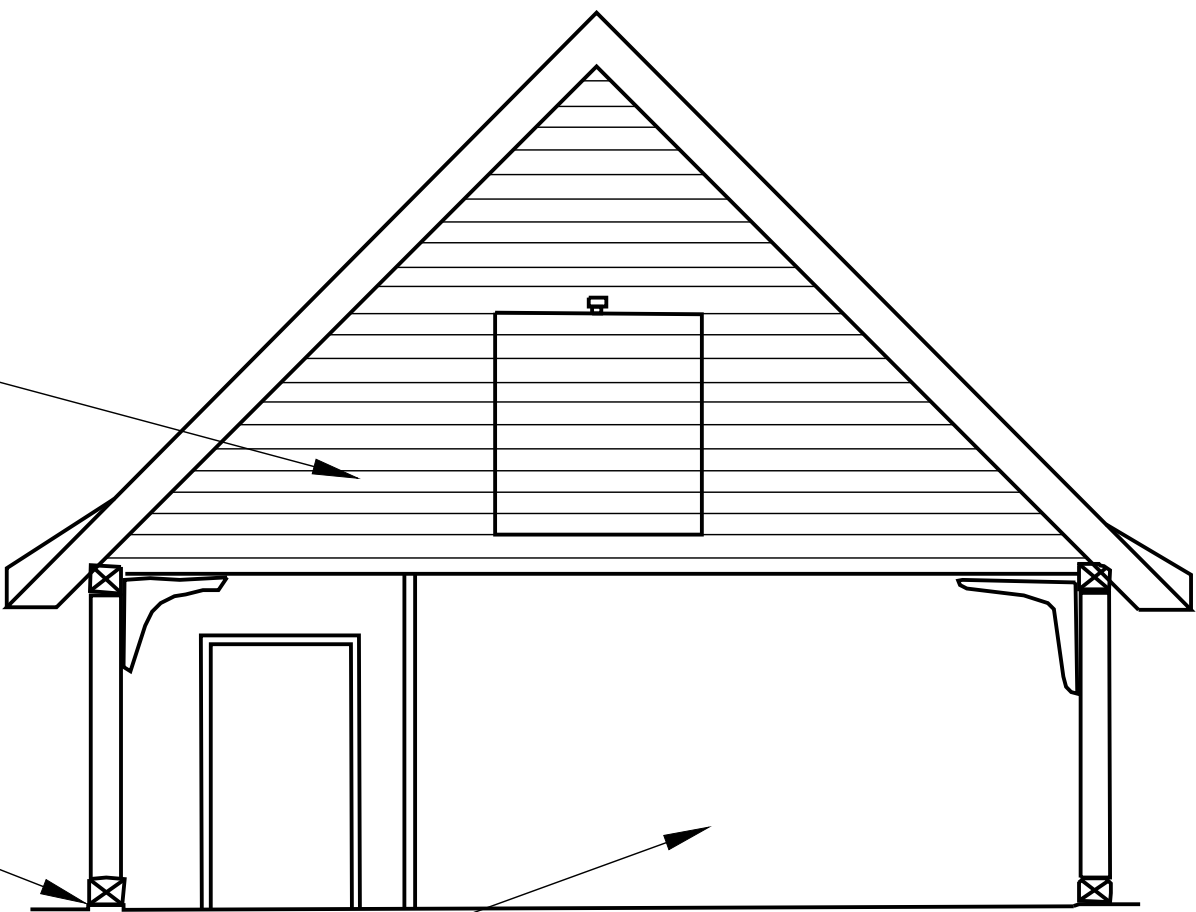
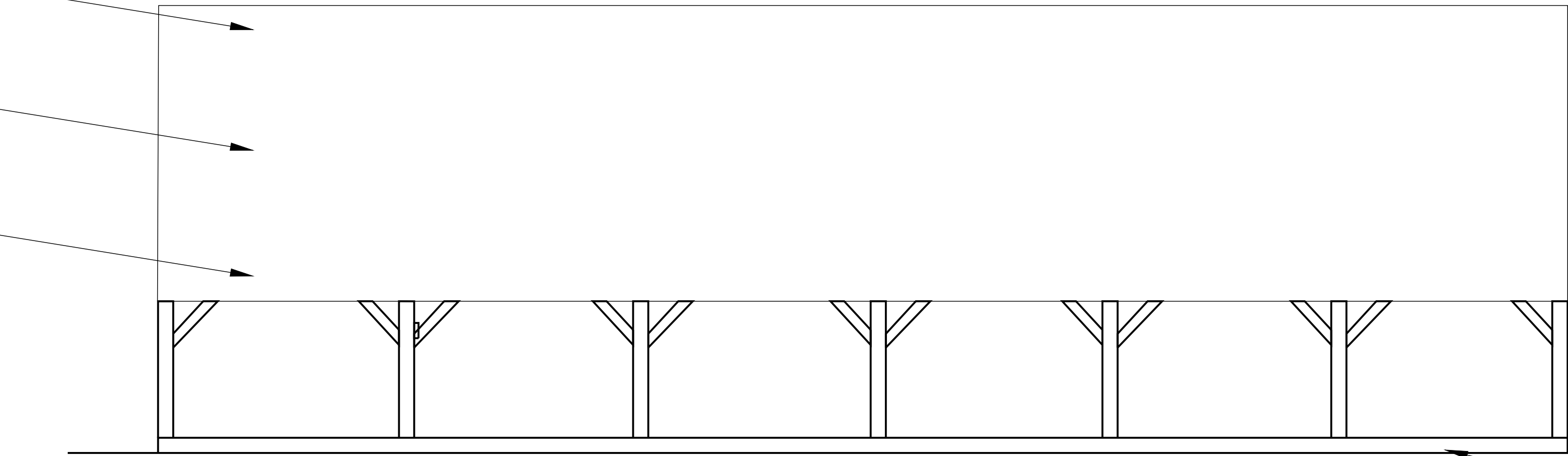
East side soleplate to be 100% renewed, with new post bases and founded on new half brick plinth.

Informal timber partitions at north and to remain (provisionally).

Note: following ground reduction and internal levels co-ordination between new floor level and existing raised dairy floor, set out and construct a new plinth will potentially higher than existing by 150mm, based on north ground level.

Provisionally retention of timber internal partitions at the North End.

Pull back southeast post to near vertical, reinforce fractured base and head plate joints and install additional steel tie above to connect the east and West head plates.



Ground Floor Plan  
1:100 As Existing



Revision	Date	Comments
DO NOT SCALE FROM THIS DRAWING		

PRELIMINARY

St. Osyth Priory, Essex  
Repairs & Alterations to the  
Tithe Barn, Dairy & Cart Lodge  
Cart Lodge - Repairs

CARDEN & GODFREY  
Architects

Carden & Godfrey Limited  
33 Clerkenwell Close  
London EC1R 0AU  
Telephone: 020 7490 0300  
Facsimile: 020 7490 0004  
mail@cardenandgodfrey.co.uk

Scale	Size	Date	Drawn	No.	Rev.
1:100	A1	Sep.22	MS	5125-1-34	-

© Carden & Godfrey Ltd own the copyright of this drawing and design which must not be reproduced in whole or part without the written permission of Carden & Godfrey Ltd