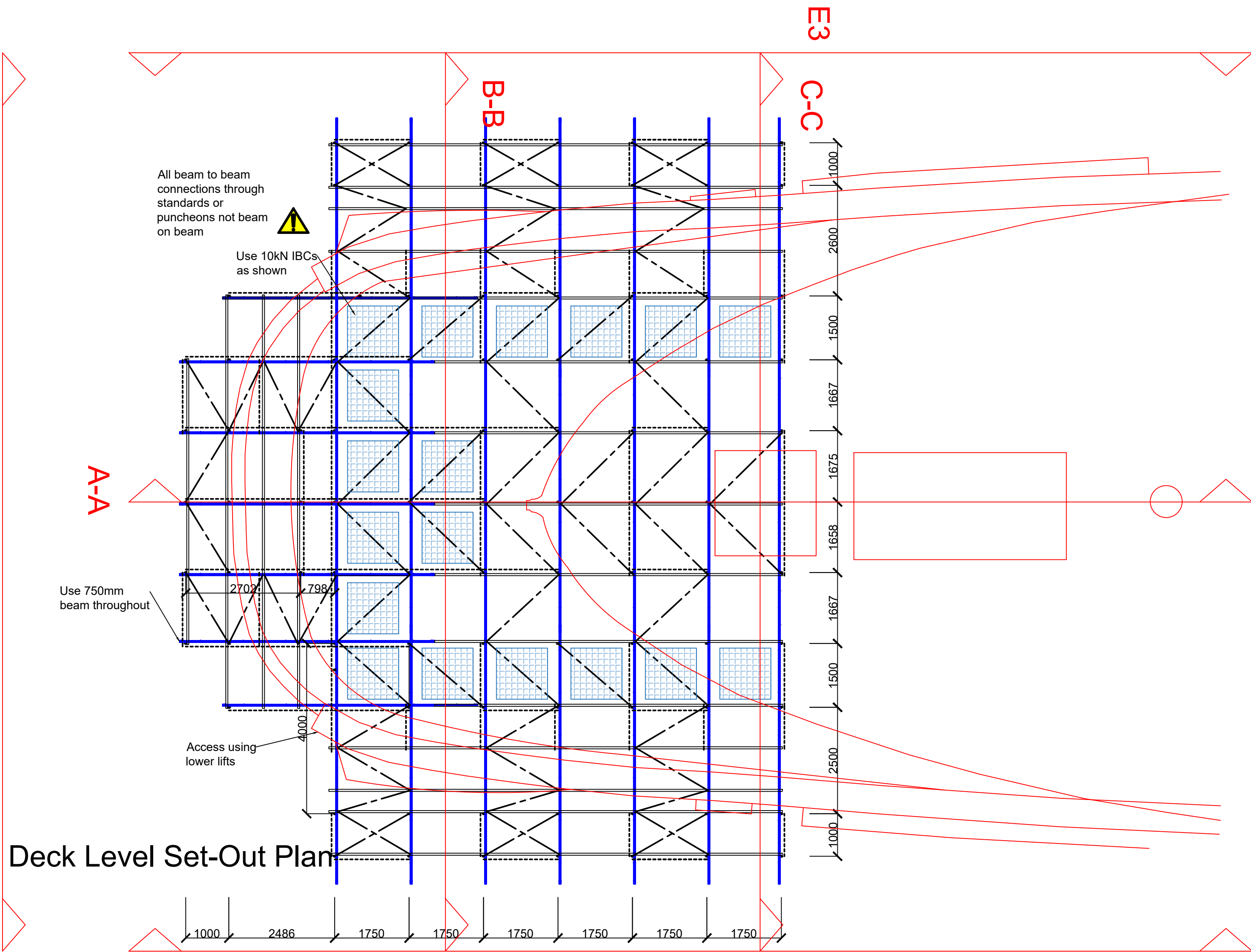
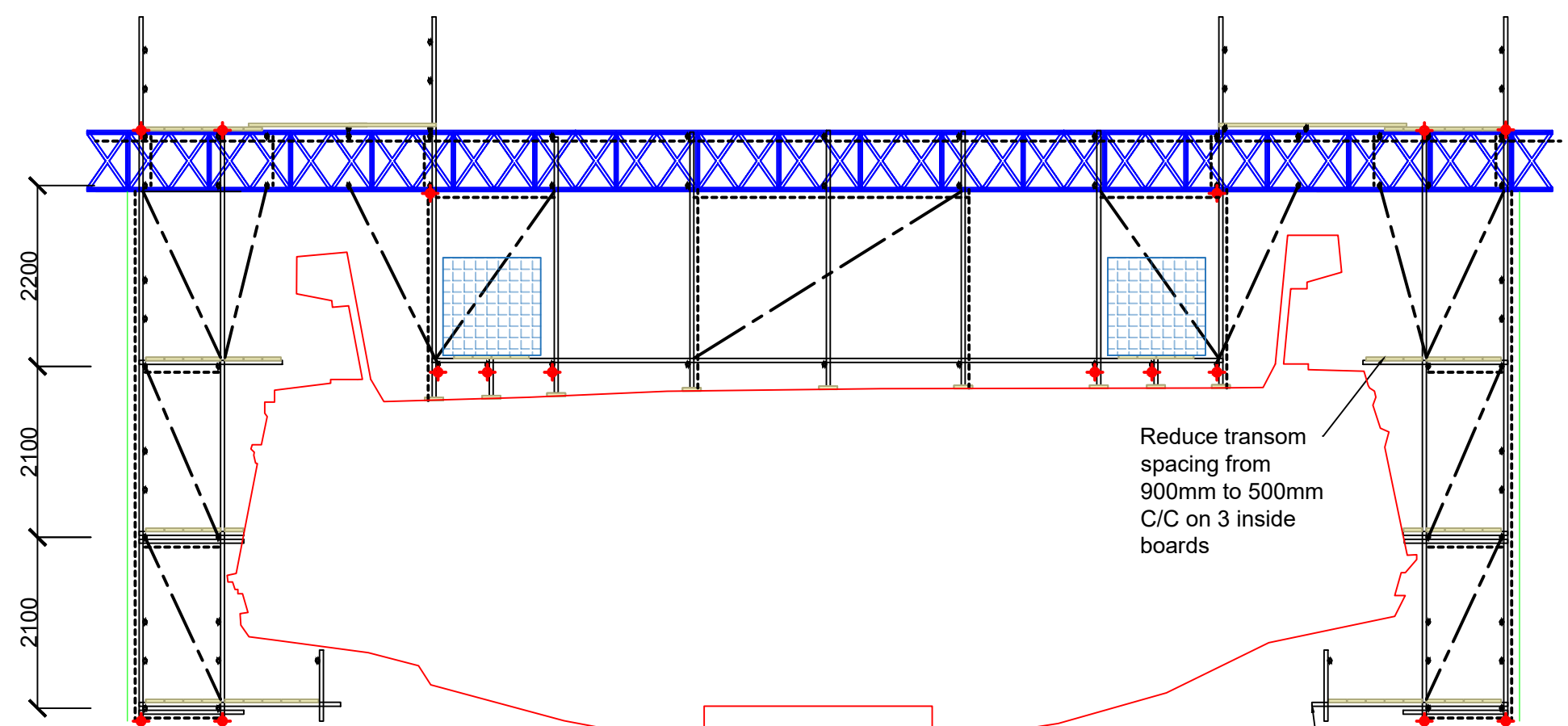


E2



750mm X- beam alloy beams laced;
Allowable Moment 41.00 kN/m
Allowable Shear 37.00kN
Max spacing 1.0m c/c Top Chord,
Max spacing 2.0m c/c bottom chord,
Plan Bracing to match spacing of lacing tubes
All connections made using load-bearing couplers.

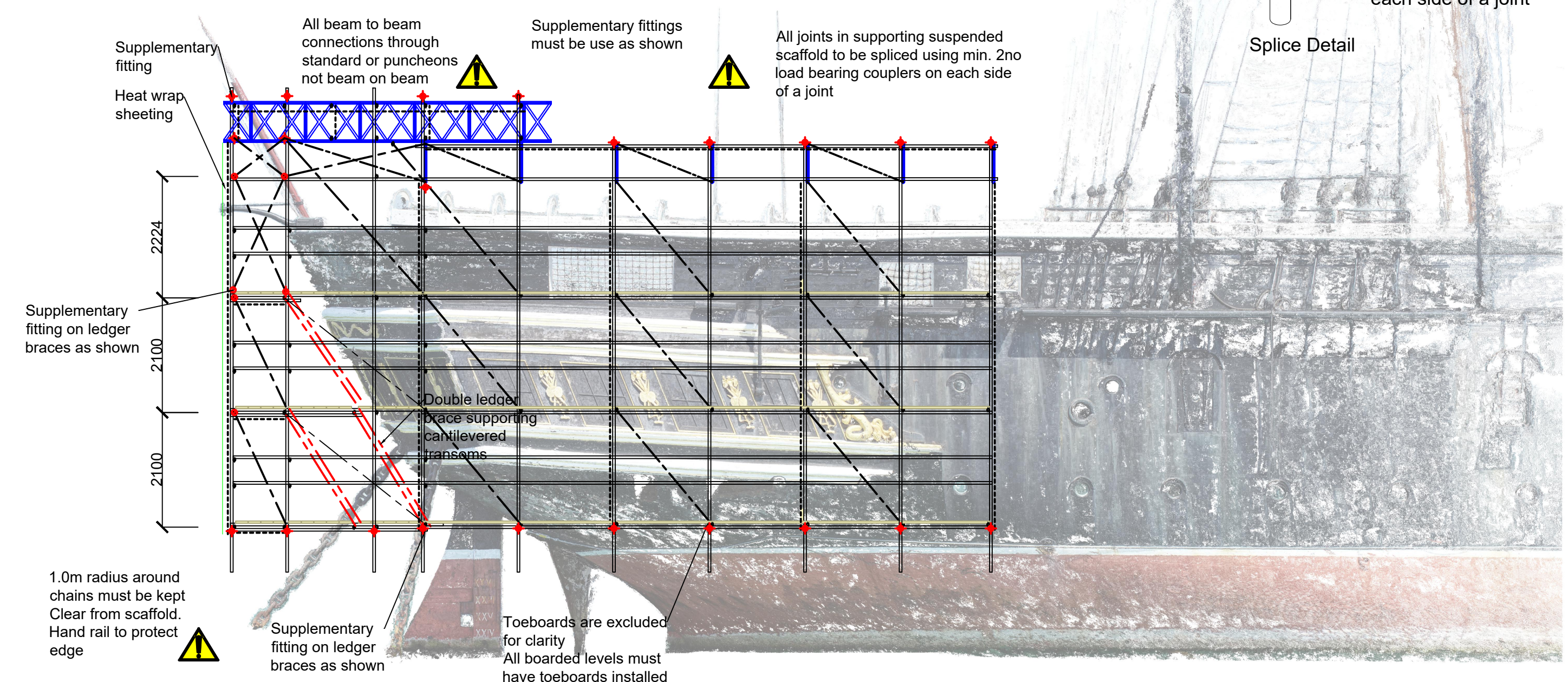
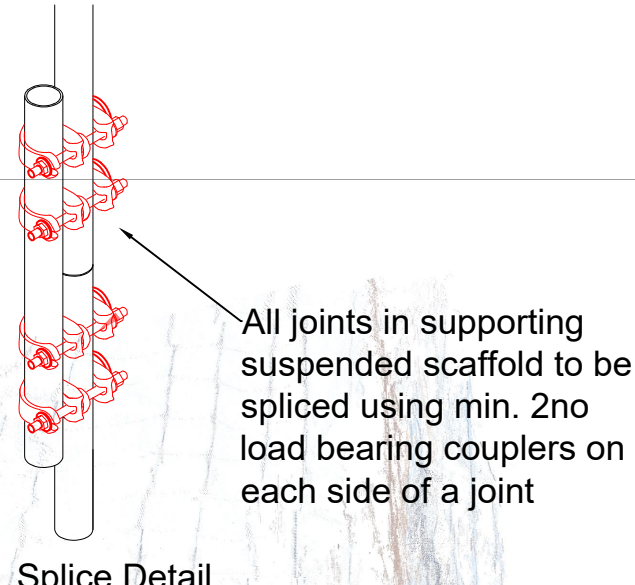
NASC	Maximum Loading
Load Class 1	V Light Duty 0.75kN/m²
Load Class 2	Light Duty 1.50kN/m²
Load Class 3	General 2.00kN/m²
Load Class 4	Heavy Duty 3.00kN/m²



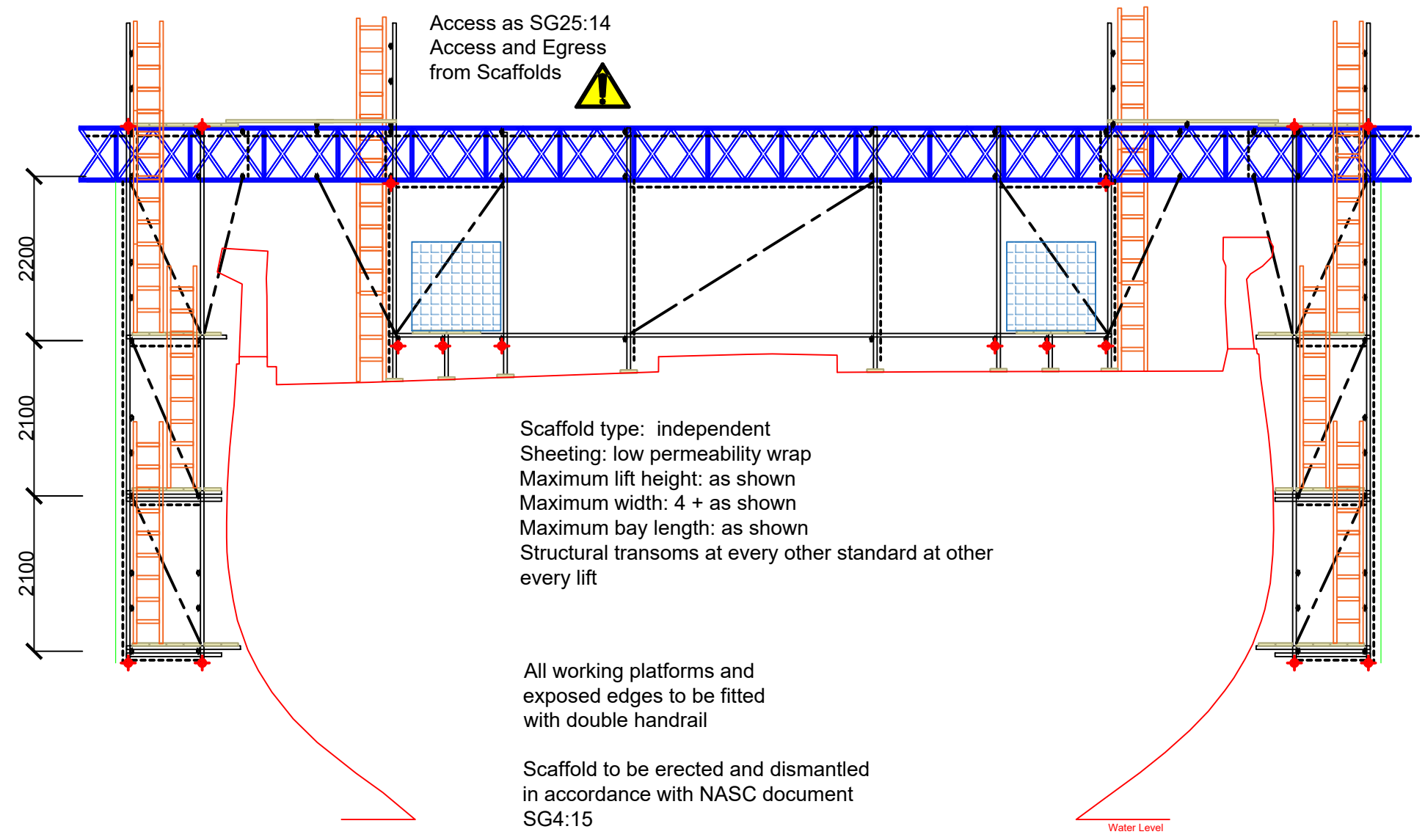
45.000m AD
Section B-B

GENERAL NOTES
BASIS OF DESIGN
This drawing has been prepared from information supplied to us by, or on behalf of the contractor, who should check that his requirements have been correctly interpreted and that all loadings, dimensions, lift heights, bay sizes, erection/striking sequences etc. are as required and practicable.
IMPOSED LOADS
The contractor is to ensure that the existing structure, it's fabric and/or the ground will safely support the extra imposed loads; or supply new.
Maximum calculated tie load: See notes
LOADINGS ALLOWED
The contractor must ensure that all loading(s) allowed for is sufficient.
Live loads: See notes
SHORING WORK
We can not and will not pass comment on the structure being shored, as this involves matters beyond our control and knowledge. It is the contractors responsibility to ensure that the existing structure will safely span between our supports, and can be safely shored in the way indicated.
FOUNDATIONS
The contractor must prepare all foundations prior to erection.
TEMPORARY ROOFS
No temporary roof can be made watertight.
Loading: Snow loading assessed using BSEN1991-1-3 2003, unless the contractor adopts a snow management system.
MATERIALS
All scaffolding materials forming this structure are to comply, and be constructed in accordance with BS1139 and TG20:13 (current editions).
MODIFICATION
No alteration is to be made to the structure detailed on this drawing without prior written permission from 9Design Services) Limited.
PROPERTY
This drawing is confidential and the exclusive property of THE SCAFFOLD CONTRACTOR.
No unauthorised use, copy or disclosure is to be made, and is to be returned on request.
DIMENSIONS
Written dimensions shall take precedence over scaled dimensions. The contractor must verify all site dimensions and notify of any discrepancies prior to erection.
PERMITS AND PERMISSIONS
The contractor must obtain all permits and permissions prior to erection.
CONSTRUCTION NOTES
1) All ladder beams and/or unit beams are to be tied together at 1000 centres on top chord and 2000 centres on bottom chord, with the top chord plan braced, unless stated otherwise.
2) Unless otherwise noted all lifts other than boarded platform levels are to be constructed using load bearing couplers.
3) All general construction is to be in accordance with TG20:13 unless noted otherwise.
4) Main contractors to undertake all making good where necessary.
5) Main contractors to provide and maintain adequate tie positions.
6) No sheeting, wind protection or fans to be added to this structure without prior written permission from 9Design Services Limited

E1



45.000m AD
Side view



45.000m AD
Section C-C

DWG STATUS: For discussion	PROJECT NJS Scaffolding LTD Portsmouth historic Dockyard				SHEET CONTENTS Cantilever Access Scaffold Rear of HMS Warrior	
	SCALE 1:75@ A1	DATE 02/08/18	DRAWN. WH-	CHKD. NH-	DRAWING No. SCK2000451	REV 01
	FILE REF njs					

