

- LEGEND :**
- Isolation Valve
 - Double regulating valve & orifice plate - Commissioning Set (CS)
 - Drain Cock
 - Safety valve
 - Strainer - Type F1 by Mitsubishi
 - Flexible connection
 - Automatic Air Eliminator
 - Meter
 - Temperature Sensor by Mitsubishi
 - Temperature Gauge
 - Pressure Gauge
 - Differential Pressure Sensor (BMS)
 - Adjustable heat boost time clock
 - ASHP Flow Sensor by Mitsubishi

- NOTES.
- ALL DIMENSIONS IN MILLIMETRES (mm) UNLESS NOTED OTHERWISE.
 - ALL LEVELS ARE IN METRES (m) ABOVE ORDNANCE DATUM.
 - THIS DRAWING SHOULD BE READ IN CONJUNCTION WITH THE GENERAL ARRANGEMENT DRAWING.

T	05-02-19	Issued for Tender	MD
Rev.	Date	Details	App'd

PROJECT TITLE:
Shotton Community Centre

DRAWING TITLE:
LTHW SCHEMATIC

CLIENT:
Shotton Parish Council

STATUS: **Tender**

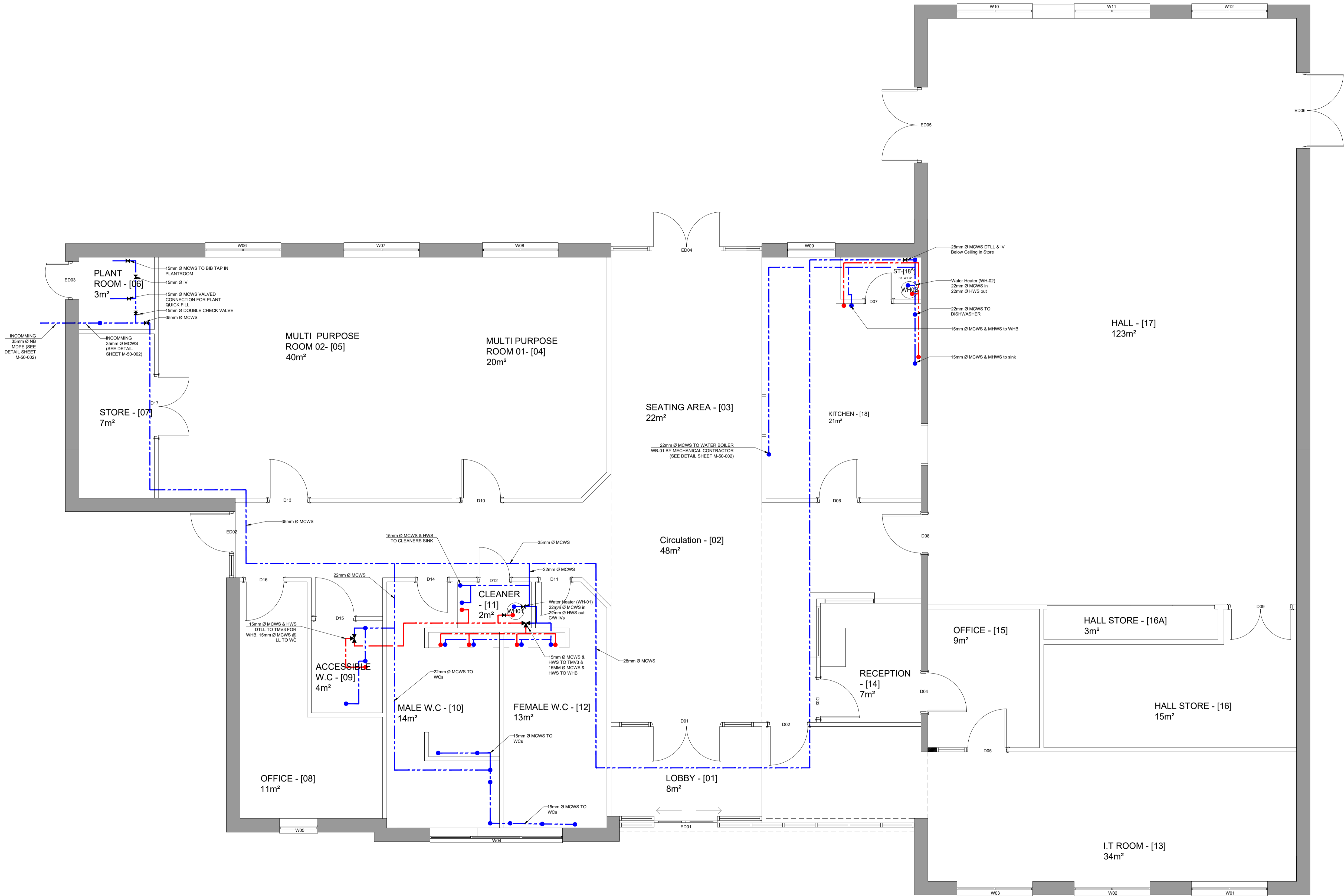
Design: MRD	CAD: WS
Chk'd: CW	App'd: MRD
Date: Aug 18	Scale: NTO

**d3 associates**
consultants and project managers

Mallan House,
Bridge End, Hexham,
Northumberland, NE46 4DQ

01434 610 434
info@d3-associates.co.uk
www.d3-associates.co.uk

Project no: 1442	Drg no: LTHW	Rev: T
----------------------------	------------------------	------------------



- NOTES.
1. ALL DIMENSIONS IN MILLIMETRES (mm) UNLESS NOTED OTHERWISE.
 2. ALL LEVELS ARE IN METRES (m) ABOVE ORDNANCE DATUM.
 - 3 THIS DRAWING SHOULD BE READ IN CONJUNCTION WITH THE GENERAL ARRANGEMENT DRAWING.

T	05-02-19	Issue for Tender	MD
Rev.	Date	Details	App'd

PROJECT TITLE:
Shotton Community Centre

DRAWING TITLE:
Proposed Domestic
Water Services

CLIENT:

Shotton Parish Council

STATUS: TENDER	
Design: MRD	CAD: WS
Chk'd: CW	App'd: MRD
Date: Aug 18	Scale: 1:50 @A1

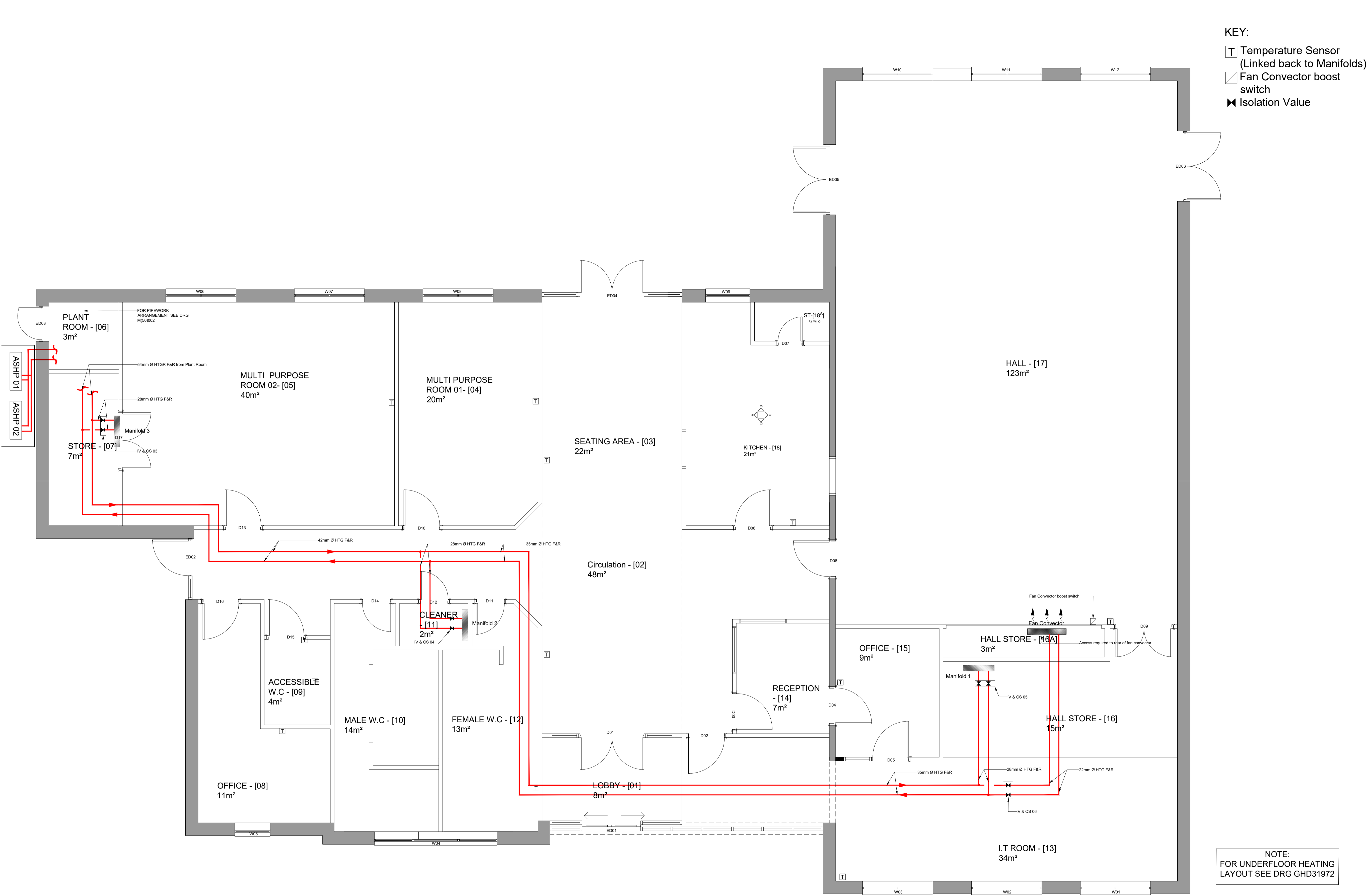


d3 associates
consultants and project managers

Mallan House,
Bridge End, Hexham,
Northumberland, NE46 4DQ

01434 610 434
info@d3-associates.co.uk
www.d3-associates.co.uk

Project no:	Drg no:	Rev:
1442	M(53)001	T



- NOTES.
1. ALL DIMENSIONS IN MILLIMETRES (mm) UNLESS NOTED OTHERWISE.
 2. ALL LEVELS ARE IN METRES (m) ABOVE ORDNANCE DATUM.
 - 3 THIS DRAWING SHOULD BE READ IN CONJUNCTION WITH THE GENERAL ARRANGEMENT DRAWING.

T	31-01-19	Tender	MD
Rev.	Date	Details	App'd

PROJECT TITLE:
Shotton Community Centre

DRAWING TITLE:
Proposed Heating Services

CLIENT:
Shotton Parish Council

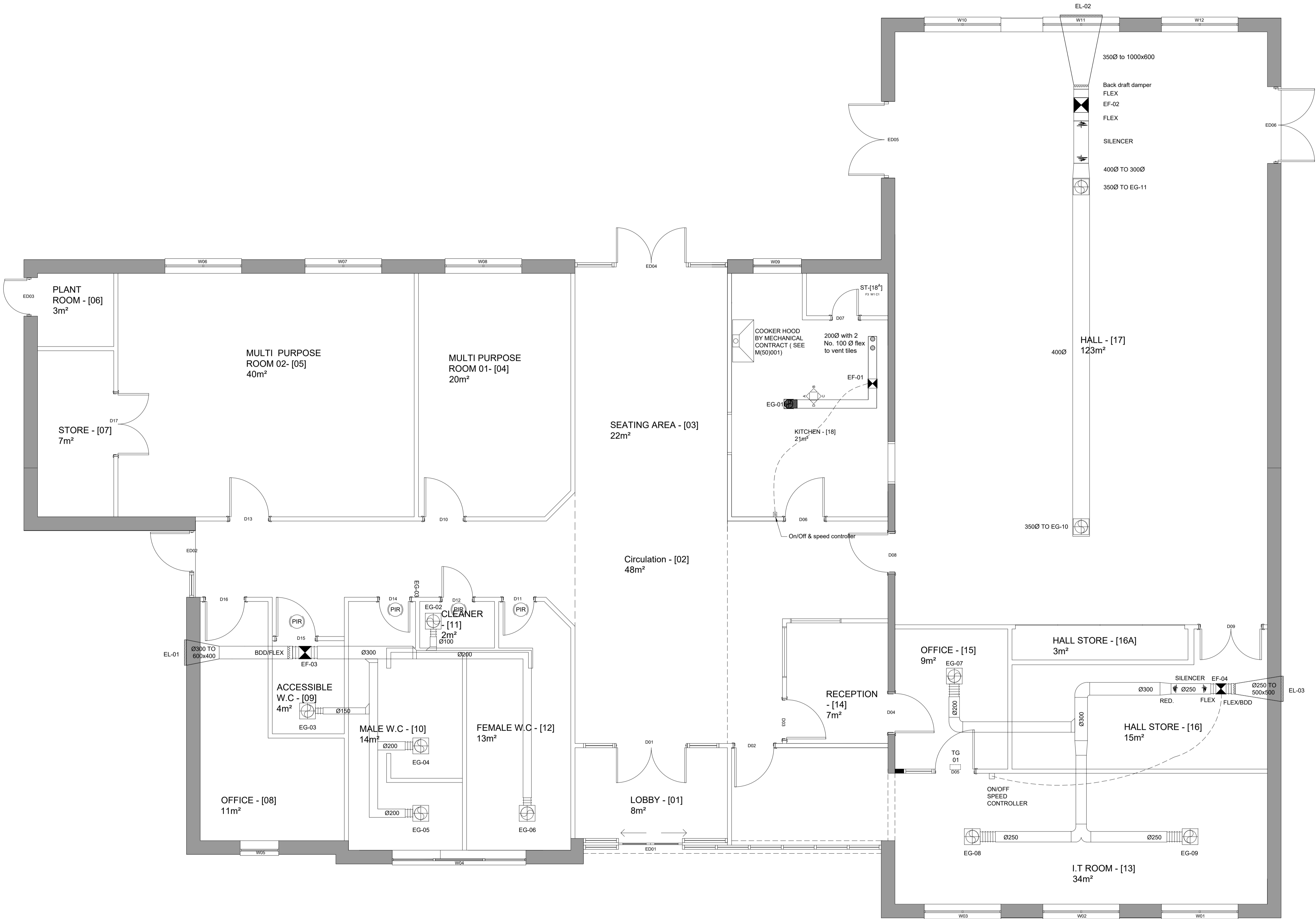
STATUS: Tender	
Design: MRD	CAD: WS
Chk'd: CW	App'd: MRD
Date: Aug 18	Scale: 1:50 @A1

 **d3 associates**
consultants and project managers

Mallan House,
Bridge End, Hexham,
Northumberland, NE46 4DQ

01434 610 434
info@d3-associates.co.uk
www.d3-associates.co.uk

Project no:	Drg no:	Rev:
1442	M(56)001	T



- NOTES.
1. ALL DIMENSIONS IN MILLIMETRES (mm) UNLESS NOTED OTHERWISE.
 2. ALL LEVELS ARE IN METRES (m) ABOVE ORDNANCE DATUM.
 - 3 THIS DRAWING SHOULD BE READ IN CONJUNCTION WITH THE GENERAL ARRANGEMENT DRAWING.

T	31-01-19	Tender Issue	MD
Rev.	Date	Details	App'd

PROJECT TITLE:
Shotton Community Centre

DRAWING TITLE:
Proposed Mechanical
Ventilations Services

CLIENT:

Shotton Parish Council

STATUS: TENDER	
Design: MRD	CAD: WS
Chk'd: CW	App'd: MRD
Date: Aug 18	Scale: 1:50 @A1



d3 associates
consultants and project managers

Mallan House,
Bridge End, Hexham,
Northumberland, NE46 4DQ

01434 610 434
info@d3-associates.co.uk
www.d3-associates.co.uk

Project no:	Drq no:	Rev:
1442	M(57)001	T



Note:

1. To be read in conjunction with specification for ancillaries.
2. Heat Pumps shall be supplied, installed and commissioned by ACROL Air Conditioning Co Ltd, Saltmeadows Road, Gateshead, Tyne and Wear, NE8 3AH.

Notes:

Each Water Heater to be wall mounted with suitable brackets and fitted with un-vented kit as supplied by manufacturer.

Notes:

Contractor to include all necessary mounting rail and drop rods from structure. All fans manufactured by Elta Fans or equal and approved.

Notes:

All grilles and diffusers to have PPC white RAL 9010 20% gloss finish as manufactured by Gilberts of Blackpool or equal and approved.

Notes:

Extract hood shall be the re-circulating type complete with two sets of Carbon filters, one installed and one spare for user.

Note:

Louvre Finish shall be Polyester Powder Coating in RAL 8012 (Red Brown) Colour provisionally. Contractor to confirm colour with Architect before ordering. All louvres manufactured by Gilberts of Blackpool or equal and approved

Notes:

1. Unit to have two grille spigots protruding through the wall, with loose grilles assembly LGA provided by manufacturer and mounted on wall.
2. Unit to be suspended on drop rods from trusses, include for all necessary rail, fixings, and anti-vibration mounts.
3. Unit to be manufactured by S&P Coil Products Ltd or equal and approved.

Notes:

1. Speed control for pump is for commissioning purposes only
2. Pump as Manufactured by WILO PUMPS or equal and approved.

NOTES.

1. ALL DIMENSIONS IN MILLIMETRES (mm) UNLESS NOTED OTHERWISE.
2. ALL LEVELS ARE IN METRES (m) ABOVE ORDNANCE DATUM.
- 3 THIS DRAWING SHOULD BE READ IN CONJUNCTION WITH THE GENERAL ARRANGEMENT DRAWING.

PROJECT TITLE:

SHOTTON COMMUNITY
CENTRE

DRAWING TITLE:

STANDARD DETAILS

CLIENT:

SHOTTON PARISH
COUNCIL

STATUS: TENDER

Design: -	CAD: EMN
Chk'd: CJW	App'd: BM
Date: JAN 19	Scale: NTS @A1



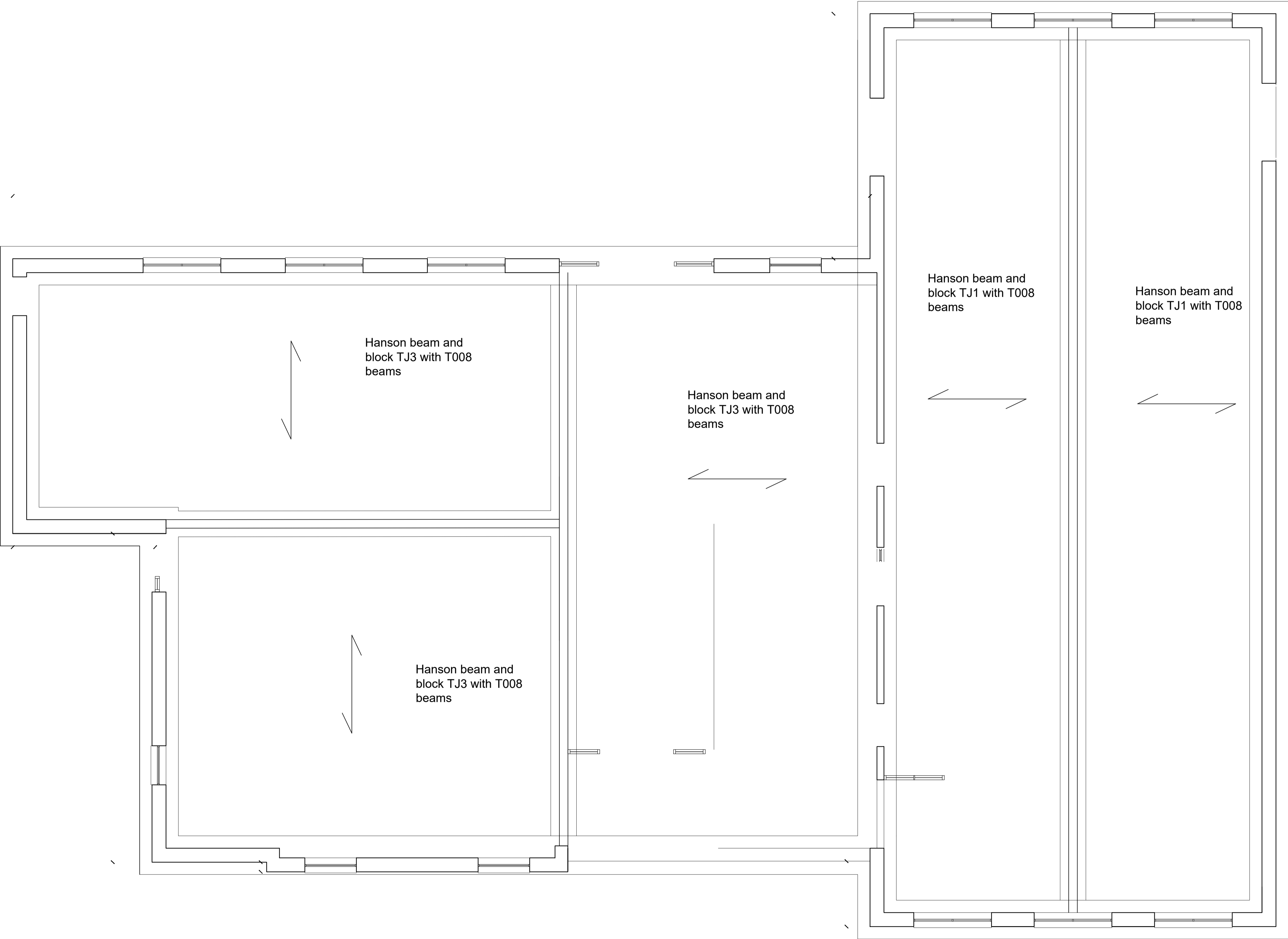
d3 associates
consultants and project managers


Mallan House,
Bridge End, Hexham,
Northumberland, NE46 4DQ

01434 610 434
info@d3-associates.co.uk
www.d3-associates.co.uk

Project no:	Drg no:	Rev:
1442	1442-M-50-002	T

- Notes
- 1 Foundations for the external walls and the internal side wall of the main hall to be 900 wide trench fill in C35 concrete.
 - 2 Foundations for the internal walls supporting the beam and block floors to be 600 trench fill in C35 concrete.
 - 3 All foundations are to excavated through the made ground and are to sit on the firm clay located approximately 2m below the existing ground level



Rev.	Rev. Date	Purpose of revision	Drawn	Checked	Approved		
<div> Novo55 CONSULTING Highway and Structural Engineering</div>							
Client							
Project							
Shotton Community Centre							
Drawing title							
Floor and Foundations							
Drawing status							
Scale	1 : 50 @ A1			DO NOT SCALE			
No.							
Client no.							
Drawing number					Rev		
SHOTTON/C/002					0		
This drawing is not to be used in whole or part other than for the intended purpose and project as defined on this drawing. Refer to the contract for full terms and conditions.							