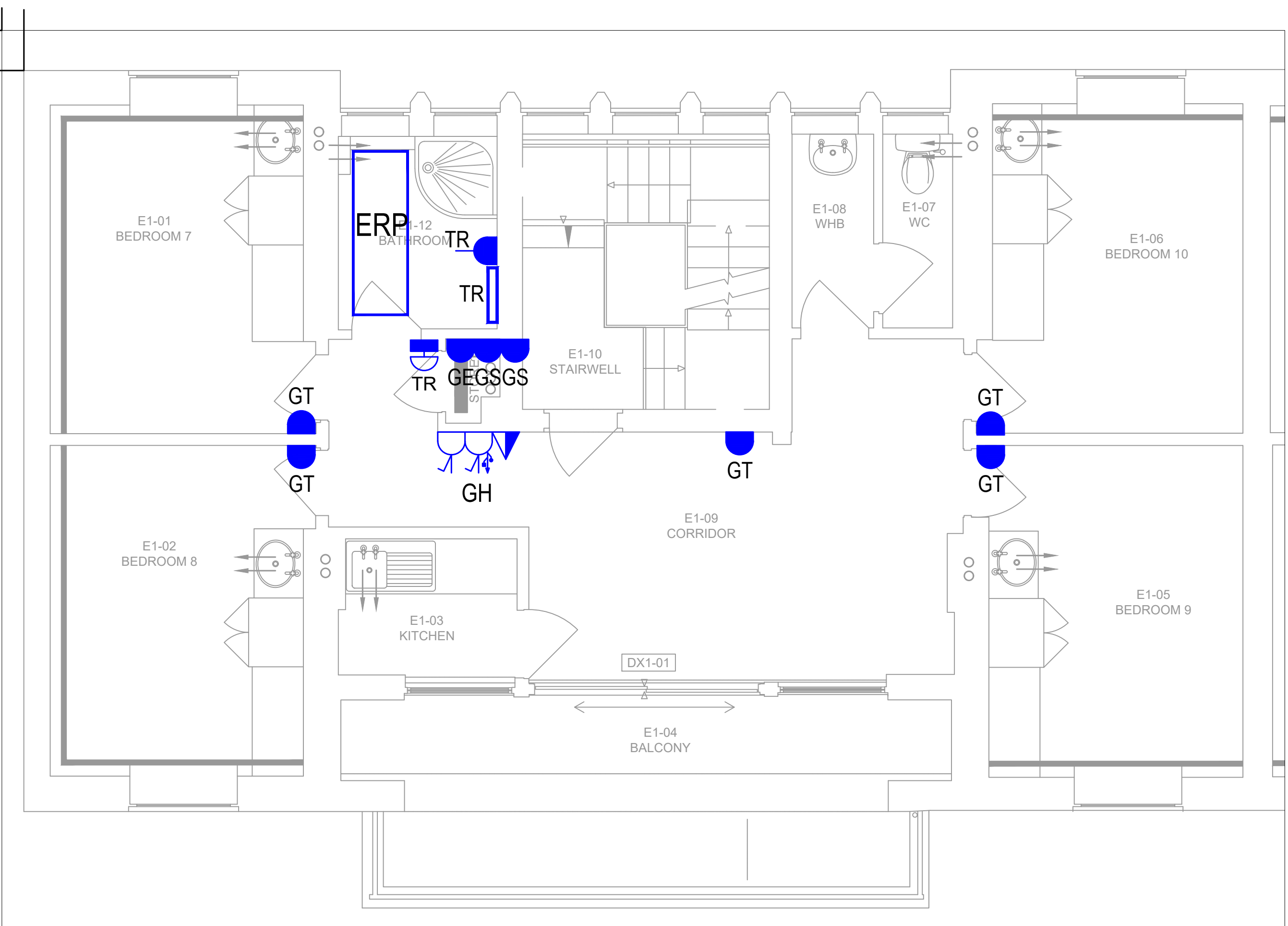
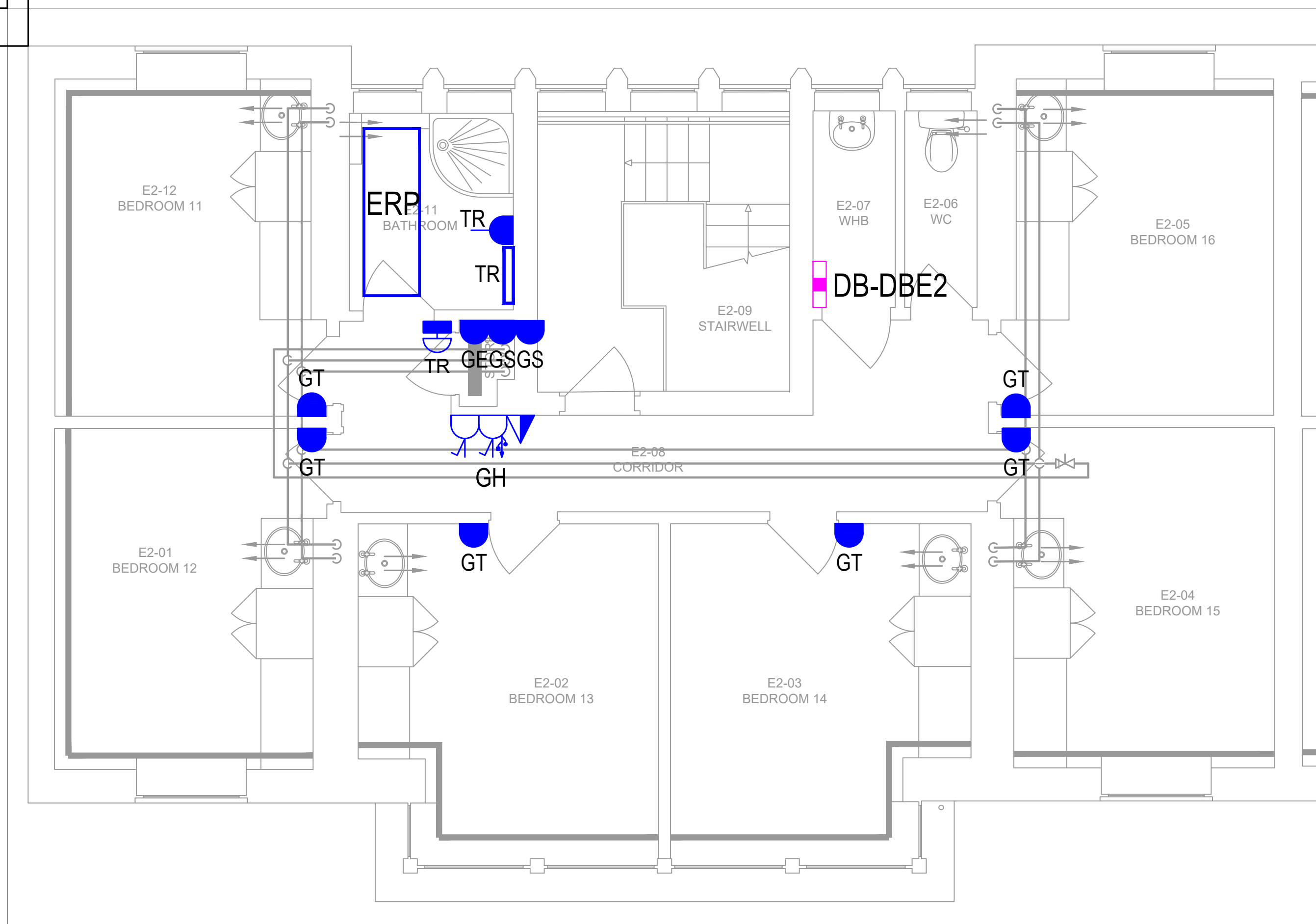


GROUND FLOOR - ELECTRICAL SERVICES LAYOUT



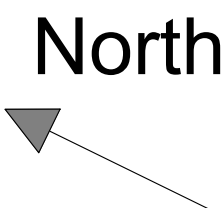
FIRST FLOOR - ELECTRICAL SERVICES LAYOUT



SECOND FLOOR - ELECTRICAL SERVICES LAYOUT


| Electrical Services Legend - Edmunds | |
|---|--|
| ERP | Solray Streamline Electric 0.6m x 1.8m Radiant Panel - SF600 with PB strip to conceal cables |
| TR | Consort Claudgen LST Towel Rail - TRF 30 |
| "XX" | Fused Spur with flex outlet |
| TR | 16A Pushbutton 10 minute timer for Towel Rail |
| GE | Supply for Genius Switch serving Electric Radiant Panel |
| GS | Supply for Genius Switch serving Underfloor Heating |
| GT | Supply for Genius Thermostat |
| GH | Socket & Cat 6 Data Outlet at high level for Genius Hub |
| DB-DBE1 | Existing Distribution Board |
| DB-DBE2 | Existing Distribution Board |
| NOTE: Refer to Typical Genius installation detail E5 on CS-91 Details drawing for wiring and installation requirements, including builders work requirements for main contractor. | |

| Electrical Services Scope Of Work - Salix | |
|--|--|
| 1. WHERE OUTLETS ARE INSTALLED WITHIN INTERNAL WALLS THE CONTRACTOR SHALL ALLOW TO CHASE WALLS TO FACILITATE RECESSED INSTALLATION OF CABLING AND TO MAKE GOOD UPON COMPLETION. | CLIENT. |
| 2. WIRING AT HIGH LEVEL SHALL BE CONTAINED ON THE NEW LED LIGHTING SHELF OR WITHIN CEILING VOIDS TO ENSURE ALL CABLING IS RECESSED. | 10. THE ELECTRICAL CONTRACTOR SHALL ALLOW FOR ALL POWER AND DATA REQUIREMENTS SHOWN ON THIS DRAWING AND THE TYPICAL INSTALLATION DETAILS ON DRAWING CS-91. |
| 3. ALL SUPPLIES ARE TO BE FED FROM THE EXISTING DISTRIBUTIONS BOARDS SHOWN AND INSTALLED WITH LS0H T&E. | 11. THE ELECTRICAL CONTRACTOR SHALL ALLOW FOR CONTAINMENT TO FACILITATE INSTALLATION OF THE POWER AND DATA SHOWN. |
| 4. ELECTRICAL CONTRACTOR TO PROVIDE DISTRIBUTION BOARD SCHEDULE WITH PROPOSED CABLE SIZES FOR APPROVAL BY THE ENGINEER BEFORE COMMENCING WORKS. | 12. GENERALLY CABLING WILL BE RUN ABOVE CEILING IN CORRIDORS, RECESSED IN BEDROOMS AND WITHIN SURFACE MOUNTED PLASTIC CONDUIT (NOT MINI TRUNKING) IN BATHROOMS. |
| 5. PROVIDE ALL NECESSARY TESTING AND COMMISSIONING OF NEW ELECTRICAL SYSTEMS. | 13. THE MAIN CONTRACTOR SHALL ALLOW FOR ALL BUILDERS WORK REQUIRED FOR INSTALLATION OF THE ELECTRICAL WORKS SHOWN ON THIS DRAWING, CAREFUL ATTENTION SHALL BE PAID TO THE INSTALLATION DETAILS ON DRAWING CS-91. |
| 6. PROVIDE UPDATED RECORD DRAWINGS AND OPERATION AND MAINTENANCE MANUALS UPON COMPLETION OF THE WORKS. | |
| 7. PROVIDE UPDATED DISTRIBUTION BOARD SCHEDULES UPON COMPLETION OF THE WORKS. | |
| 8. CONTRACTOR WILL BE RESPONSIBLE FOR DEVELOPING THE DESIGN FROM THE TENDER DRAWINGS TO COMPLETION TO INCLUDE FINALISING POSITIONS OF ALL OUTLETS WITH THE ARCHITECT, CO-ORDINATING FINAL OUTLET POSITIONS WITH OTHER TRADES, PREPARING CONSTRUCTION ISSUE DRAWINGS AND DISTRIBUTION BOARD SCHEDULES FOR APPROVAL BY THE ENGINEER. | |
| 9. THE SUPPLY AND COMMISSIONING OF THE GENIUS EQUIPMENT WILL BE VIA DIRECT ORDER WITH THE | |



NOTES - ELECTRICAL SERVICES

- THIS DRAWING IS TO BE READ IN CONJUNCTION WITH THE ELECTRICAL COVER SHEET, TYPICAL ELECTRICAL DETAILS DRAWING AND ELECTRICAL SPECIFICATION DOCUMENT.
- DO NOT SCALE FROM DRAWINGS, REFER TO ARCHITECTS DRAWINGS FOR SETTING OUT
- FIRE RATE PENETRATIONS & UTILISE KINGSPAN SAFIRE FIRE INSERTS ON ALL ELECTRICAL OUTLETS MOUNTED IN FIRE RATED WALLS - REFER TO ARCHITECTS FIRE STRATEGY DRAWINGS.
- CO-ORDINATE ALL SUPPLIES FOR EQUIPMENT WITH FINAL LOCATIONS AND HEIGHTS BEFORE INSTALLATION.
- CAREFUL ATTENTION SHALL BE GIVEN TO THE SOCKET OUTLET SYMBOL DENOTING THE REQUIREMENT FOR INTEGRATED USB A&C OUTLETS
- LAYOUT IS TO BE FULLY COORDINATED WITH EXISTING CONDITIONS, ARCHITECTURAL DETAILS AND OTHER SERVICES - FINAL LAYOUT TO BE APPROVED BEFORE COMMENCING INSTALLATION.
- INSTALL EQUIPMENT AND SERVICES ACCORDING TO MANUFACTURER'S INSTRUCTIONS AND IN HARMONY WITH APPLICABLE CODES & STANDARDS

| Rev | Description | Date |
|--|--|---------------|
| | | |
| | | |
| | | |
| | | |
| | | |
| | | |
| Client | Bedford College Group | |
| Site | Shuttleworth College, Old Warden Park, SG189DX | |
| Project | Halls of Residence - SALIX | |
|  Construction & Engineering Services Ltd www.pandaces.co.uk T: 01908 991130 | | |
| Title | EDMUNDS ELECTRICAL SERVICES LAYOUT - SALIX | |
| Number 02-15-E-LX-11 | | |
| Revision T00 | | Date 01/12/23 |
| Scale 1:100 at A1 | | Status Tender |