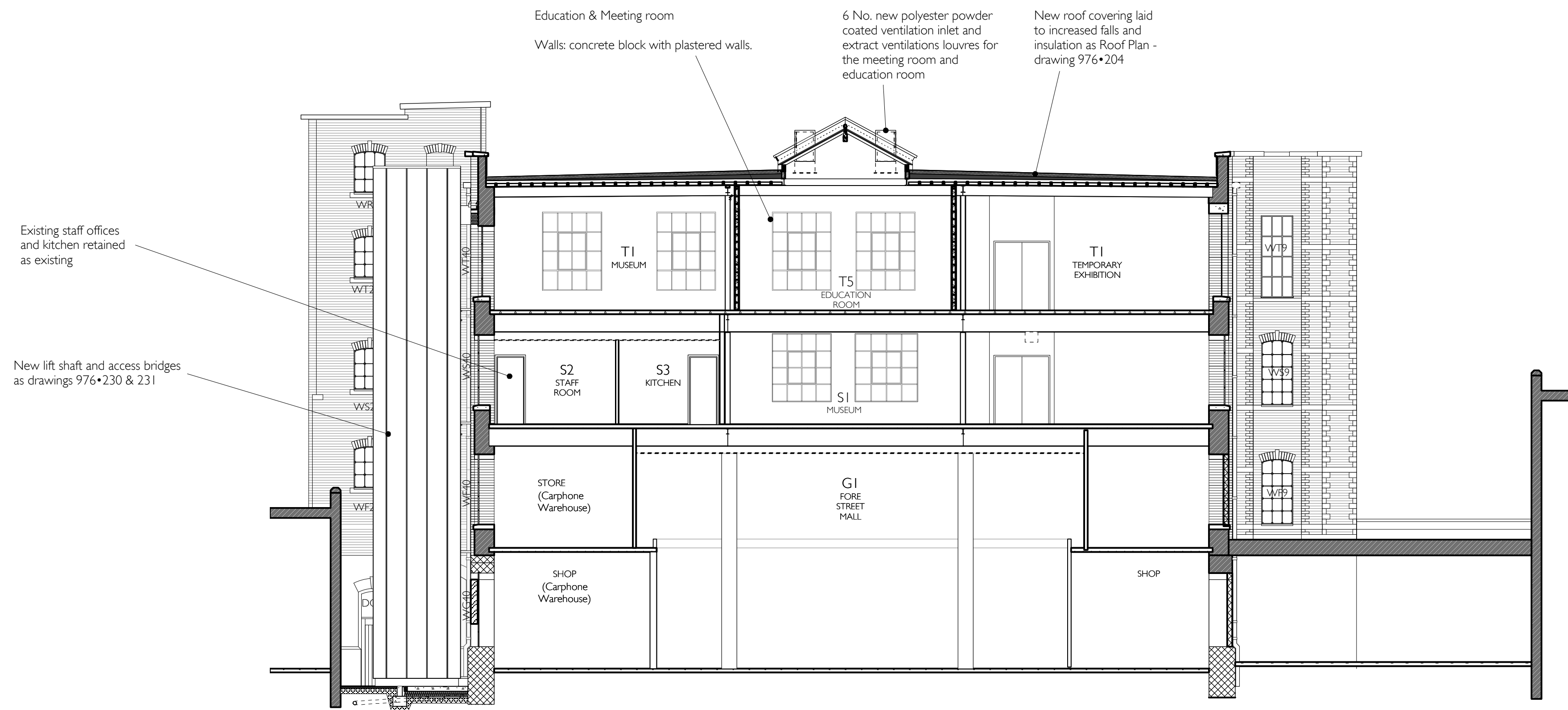


220•01 SECTION A-A - PROPOSED
1:100@ A1



220•02 SECTION B-B - PROPOSED
1:100@ A1

Rev A : 25/ 11 / 2016
Partitions to education suit revised.
Initial Issue : 29 / 06 / 2016

976 / 220A
Trowbridge Museum Redevelopment
The Shires, Court Street, Trowbridge
Wilts. BA14 8AT
for Trowbridge Town Council
SECTIONS AA & BB
PROPOSED
1:100 @ A1 June 2016
ARCHITECTON
The Wool Hall 12 St Thomas Street
Bristol BS1 6JJ
t 0117 9105200 f 0117 9260221
e info@architecton.co.uk

0 M 5