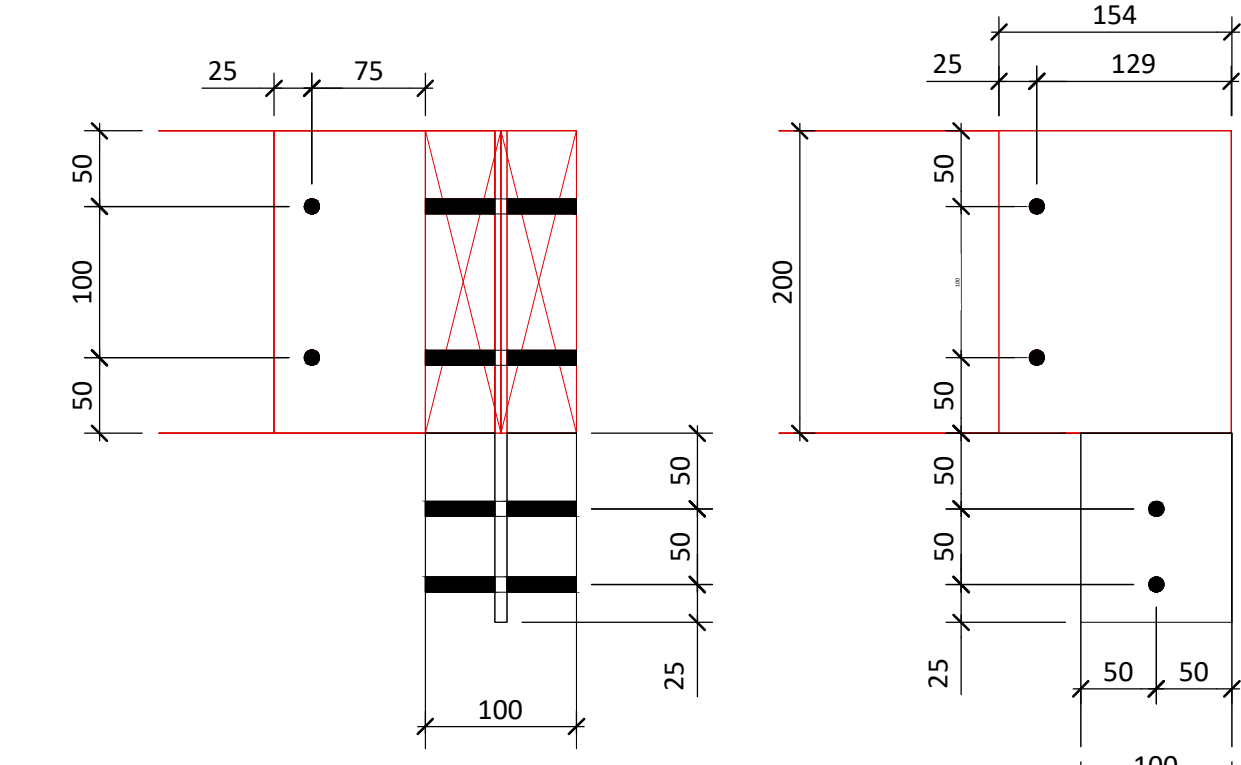
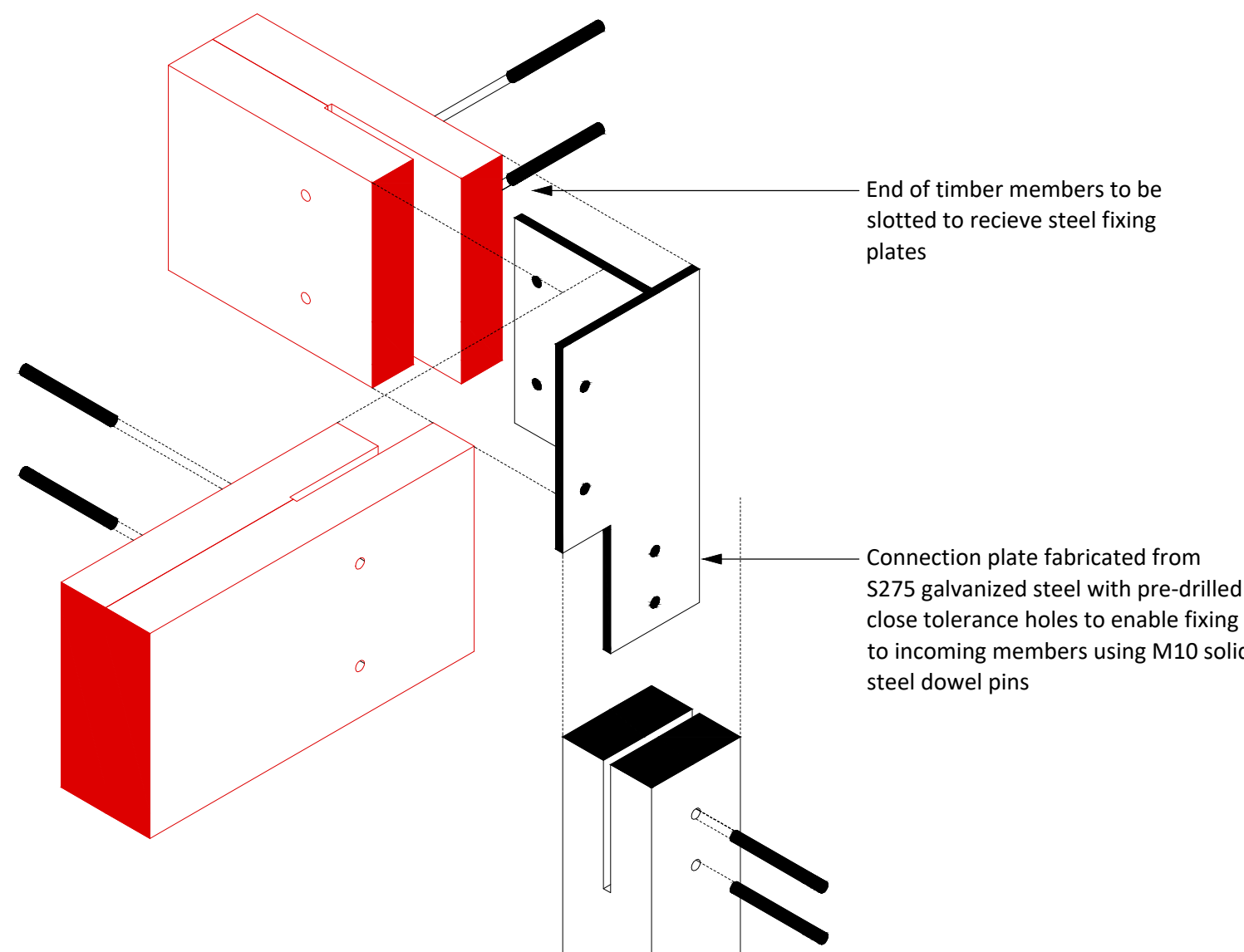


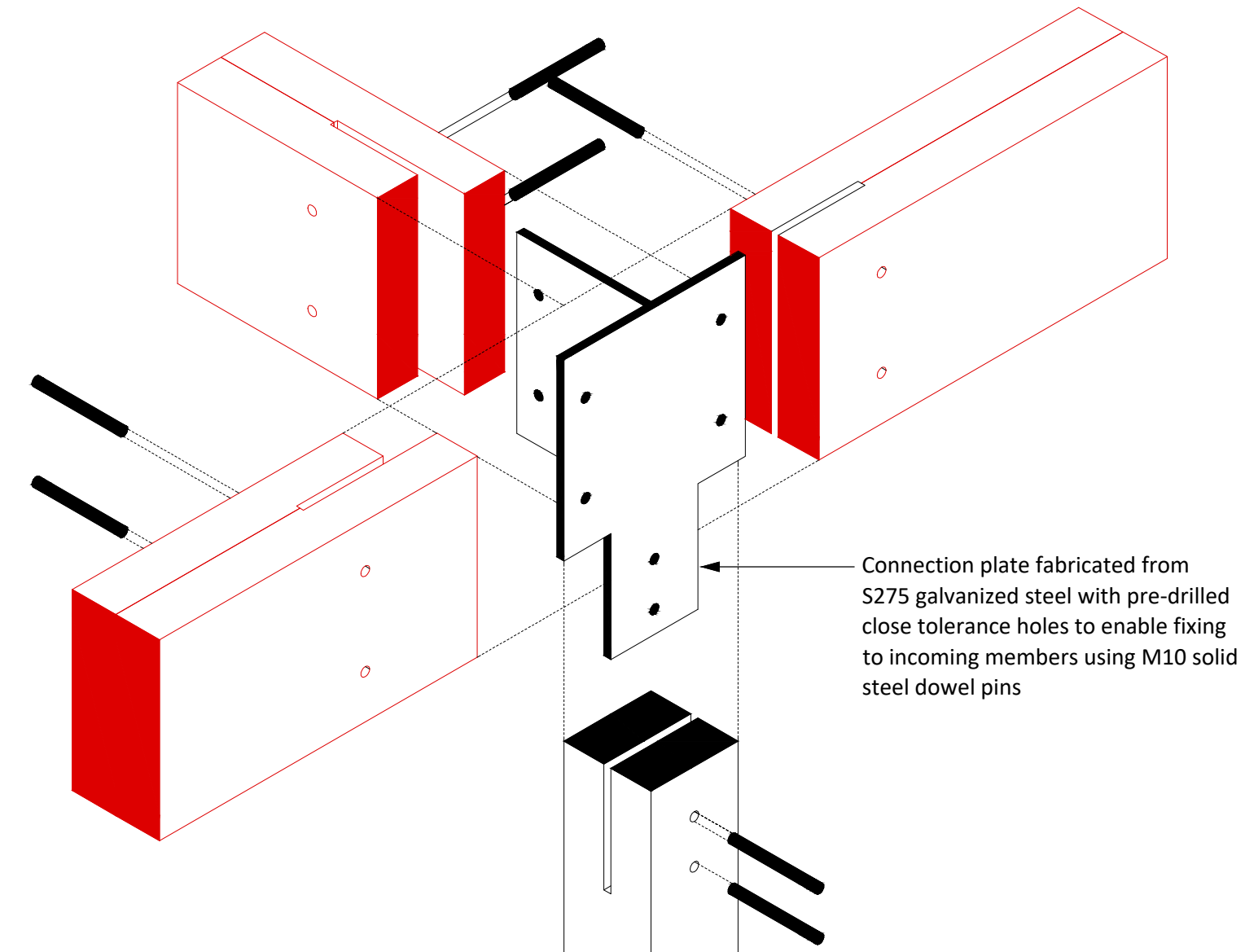
Ground Floor Plan
Showing Structure Over
1:50



Post Top Connection
1:5



Post Top Connection (corner)
1:5



Post Top Connection (mid)
1:5

LEGEND	
	Brick Wall (to Architects details)
	Medium Dense Concrete Blockwork
	Non load bearing walls

LINTEL SCHEDULE	
L1	= HEAVY DUTY CAVITY LINTEL
L2	= STANDARD CAVITY LINTEL
L3	= 100x100 PCC

TRUSSED TIMBER RAFTER DESIGN LOADING	
Rafters	
Dead load excluding self weight	1.00kN/m2 on plan
Imposed load	0.60kN/m2 on plan
Ceiling	
Dead load excluding self weight	0.25kN/m2 on plan
Imposed load	0.25kN/m2 on plan
or in accordance with BS5268 Part 3 whichever is greater. Designer to allow for snow drifts.	

- General Notes
- These drawings are to be read in conjunction with all relevant Architect's and Engineer's drawings and specifications, refer to Drg. No.00 for Structural Specification
 - Except where specific dimensions are shown on these drawings, all setting out shall be in accordance with the architects drawings and specifications. Any discrepancy between these drawings and the architects drawings or the actual site dimensions should be referred to the engineer immediately and confirmed in writing. The contractor is responsible for the accuracy of all dimensions and the setting out.
 - Do not scale from these drawings. If in doubt, ask.
 - All dimensions are in millimetres unless noted otherwise.
 - All proprietary materials to be in accordance with manufacturers specifications and to Engineer's approval.
 - All proprietary CDP elements shown on the drawings should be treated as indicative and are subject to detailed design by specialist manufacturer/supplier. The contractor should make suitable allowance for third party design/detailing and potential impact on the permanent work design.

S.H.E (Safety, Health & Environmental) Information in accordance to CDM regulations 2015. The following notes refer to Hazards/Risks considered in addition to those normally associated with this type of work. Number references correspond to Risk Register outlined on General Notes drawing.

Existing Structural System

Excavations Adjacent to Existing Foundations and Adjacent Buildings

P02	14.08.25	Updates as per latest Architects drawings	AN
P01	18.06.25	Preliminary Issue	AN
Rev	Date	Revision Description	Issued by

Drawing Status: S1 - Suitable for Co-ordination

GODSELL • ARNOLD
PARTNERSHIP LTD
Consulting Civil and Structural Engineers
7 Arrowsmith Court, Station Approach
Broadstone, Dorset. BH18 8AX
Telephone: 01202 600 900 Website: www.gaplltd.net

Client: Chickerell Town Council

Project: Chickerell Hall

Drawing Title: Ground Floor Plan Showing Structure Over

Scale: 1:50 @ A1	Drawn: AN	Checked: HL
Project-Originator-Zone-Level-Type-Role	Drawing No.:	Revision:
25039-GAP-XX-01-DR-S	0100	P02