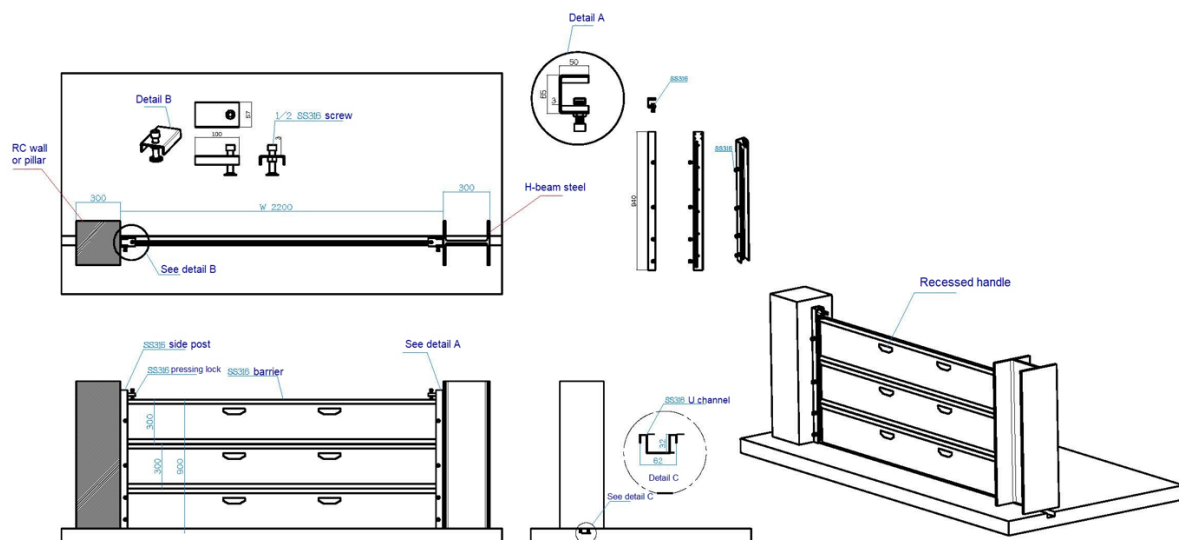


The tender queries raised are:

1. For the SCPs, are these straight forward 250x250 square posts which they then fix a channel section to, or are the SCPs to be formed with the channel in them?
 - a. If the latter, what is the dimensions of the channel?
2. For the base, the channel will be free issued to us to be cast in place, but what size is the base to be?
 - a. Is it 250mm wide to match the SCP, or wider?
 - b. How deep into the ground does it go?
 - c. Is there a deeper pocket required where there are removable posts?
3. With the blockwork walls, what is the foundation requirement? Is this a 600x600 concrete foundation (nominal building foundation) with L bars cast into it at centres to match the block cores? Or something else?
 - a. Is there a need for Type 1 below?
 - b. How far below ground level is the blockwork to start – 1 course?
 - c. Is a DPC needed?
4. With the block walls, what finish is to be applied to the faces / top?
 - a. Are they to be rendered or painted or left?
 - b. If left, what block quality is required – Paint grade, Fair Face, etc.?
 - c. What capping is required – pre-cast weather struck cap or mortar topping, or something else?

1. The channel is fixed to the square post in the manner illustrated below. The dimensions of the channel are provided in the drawing.

Material: SS316



2. The ground channel is 62mm x 32mm (see drawing above). The channel is cast flush into concrete at a minimum of 150mm wide x 150mm deep, but this depends on ground conditions.

The demountable middle posts require concrete pads 250mm x 250mm square, minimum 150mm deep. Therefore, when a middle post is present, the contractor may prefer to cast one concrete trench 250mm wide x 150mm deep to accommodate both the ground channel and the demountable middle posts, rather than having separate larger concrete pads at intermittent intervals for the middle posts only. This size (250 x 250mm square) also matches up with the SCP.

3. The foundation for the block work will be subject to hydraulic load for only a short period of time. The foundation's function is not to cut-off seepage, but to retain the integrity of the wall under a short period of flood loading at high tide. An 800 mm (wide) x 600 mm (deep) foundation one course below ground level should be constructed from mass concrete, with L-bar reinforcing cast into it to match the block cores of the wall. A damp-proof course is not required.

4. The block walls should be rendered with dark grey render of a similar shade to existing concrete walls in the public domain. The cap should be finished in the same way, as other concrete rendered walls on the island are finished.