

Elevation - A
1 : 50



Elevation - B
1 : 50



- 1 80mm Tata Trisomet Wall Insulated sandwich panel vertical cladding system - U-value: 0.25 W/m²K. External facing material: Colorcoat HPS200 Ultra or Colorcoat Prisma pre-finished steel, 0.5 mm nominal thickness. External profile: 32 mm high trapezoidal profile with a 333 mm pitch. Internal facing material: Colorcoat® High Reflect or Colorcoat® PE 15 pre-finished steel using hot-dip galvanised steel substrate. Internal profile: Lightly planed. Core insulation: PIR closed cell foam (CFC and HCFC free, zero ODP and GWP. One fix construction to cladding rail system
Guidance for specification option:
System depth: 80 mm.
System weight: 10.40 kg/m².
Fire performance: LPS1181 Grade EXT-B Certificate No. 460a/29. The internal surface of the panel complies with a Class B s2 d0 rating in accordance with BS EN 13501-1, 240 minutes integrity, 30 minutes insulation.
- 2 Masonry perimeter wall to DPC
102.5mm Class A Engineering Brick (type & colour tbc), mortar class iii/M4. Upto dpc sulphate resisting mortar may be required. 25mm perimeter insulation to slab.
Note movement joints to SE design.
- 3 Roché i95 insulated steel security roller shutter door. Double skinned steel with polyurethane foam insulating core, 95 mm in height. Bottom slit. Polyester powder coated aluminium with weather seal. Certified to LPS1175 Security Rating 2
Clear opening 3000mm W x 2800mm H
Face fixed to PFC structural frame, to SE engineers design.
Finish - Powder coated finish, colour TBC
- 4 Strongdor Securidor S2 44mm doors to LPS 1175 (SR2) single & double leaf variants.
Polyester powder coated finish, colour TBC
Ironmongery: Mico Modular and MSR Tindall hardware for personnel and fire exit requirements
Leading edge to have Integral security Astragal
12.7mm Aluminium Threshold
4No (per leaf) Stainless steel dog bolt hinges (Matt Silver Finish)
Weather seals to all sides
Fire exit signage "Push Bar to Open" - Internal, signage "Fire Exit Keep Clear" - External
U Value: - 1.6 W/m²K
- 8 Tata Eaves line gutter. Colour to match cladding (tbc)
All fixings in line with manufacturers system requirements
- 9 100x100 square galvanised Steel rainwater down pipes, polyester powder coated colour to match cladding, RAL colour tbc
- 10 Roof Cladding
Kingspan M235065200 Purfins, centres to be confirmed by cladding manufacturer and SE.
Tata Trisomet External trapezoidal insulated roof panel system, Colorcoat Prisma pre-finished steel.
120mm thickness to achieve 0.16 W/m²K 'U' value.
GRP rooflights, triple skin and provides a U-Value of 2.2 W/m². Rooflights achieve Class B non-fragile roof and 25 year durability.
All fixings, flashings etc in line with manufacturers system requirements
Structural loading of roof future proofed to receive solar panels (TBC by client)
- 22 Glazed entrance door - Neos Protect Ltd outward opening Leaf & Half fully glazed doorset.
'Secured by Design' standard (STS202 BR2) for communal entrances.
Polyester powder coated finish, colour TBC
U Value: - 1.6 W/m²K min.
- 23 SAS SPW600e Aluminium commercial window system. Ground floor windows to meet Secured by Design.
Polyester Powder Coat finish, colour tbc.
28 mm double glazed units to meet min. 'U' Value of 1.6 W/m²K min.
- 31 Able Canopies Ltd Kensington, or similar approved, cantilevered wall mounted entrance canopy.
Dimensions 1.0m projection x 1900mm wide. Complete with integrated gutter. Downpipe to discharge to threshold ACO drain.
Finished with 10mm toughened glass to the top. Power coated frame finish, RAL colour TBC.

DISCLAIMER NOTES:

DO NOT SCALE THIS DOCUMENT - USE FIGURED DIMENSIONS ONLY

ALL DIMENSIONS MUST BE CHECKED ON SITE PRIOR TO COMMENCEMENT OF ANY RELATED WORKS.

THIS DOCUMENT IS COPYRIGHT OF THE ORIGINATOR, IT MUST NOT BE ALTERED, REPRODUCED OR DISTRIBUTED WITHOUT PRIOR CONSENT.

THIS DOCUMENT MUST BE READ IN CONJUNCTION WITH ALL SUPPORTING DOCUMENTS PRODUCED BY THE ORIGINATOR AND OTHER PROJECT DISCIPLINES.

OS MAPPING OBTAINED FROM PROMAP LICENCE No. 100022432
REPRODUCED BY BERRYS UNDER OS LICENCE No. 100003668

THIS MODEL IS SUPPLIED FOR INFORMATION AND COORDINATION PURPOSES ONLY, AND CANNOT BE RELIED UPON FOR ACCURATE CONSTRUCTION, SPECIFICATION, OR COMMERCIAL INFORMATION - THIS SHOULD BE OBTAINED FROM THE SUPPORTING PROJECT DOCUMENTATION

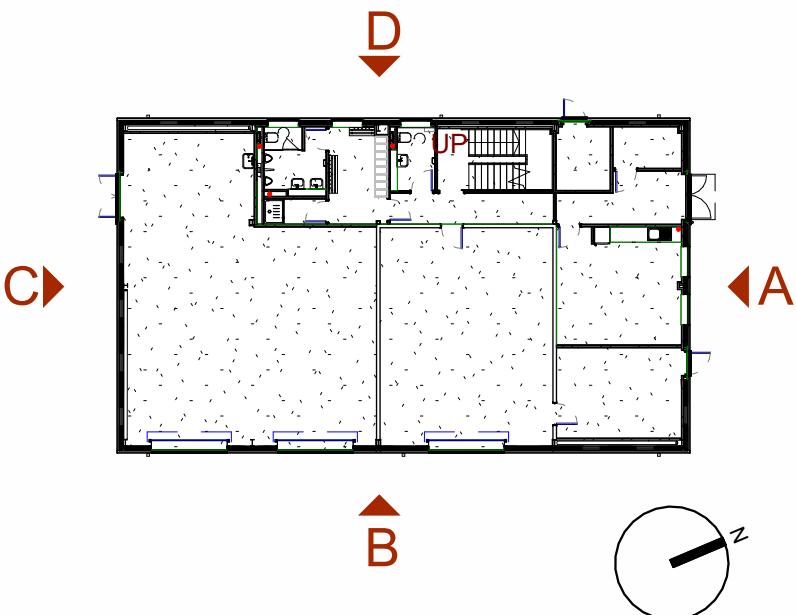
NORTH POINT:

RIBA
Chartered Practice

ORIGINATING OFFICE

BERRYS
42 HEADLANDS
KETTERING
NORHAMPTONSHIRE
NN15 7HR
01536 412464

www.berrys.uk.com



REV	DESCRIPTION	BY	CHKD	DATE
-----	-------------	----	------	------

BERRYS

STATUS: TENDER

CLIENT: WITNEY TOWN COUNCIL

PROJECT: WEST WITNEY SPORTS GROUND - NEW DEPOT

TITLE: PROPOSED ELEVATIONS

SCALE @ A1:	MODELLED BY:	CHECKED BY:	DATE:
As indicated	TH	DH	29/05/25

DRAWING No:

PROJECT:	ORG:	LEVEL:	TYPE:	DIS:	NUMBER:	REV:
KA53125	BRY	XX	EL	A	0200	