

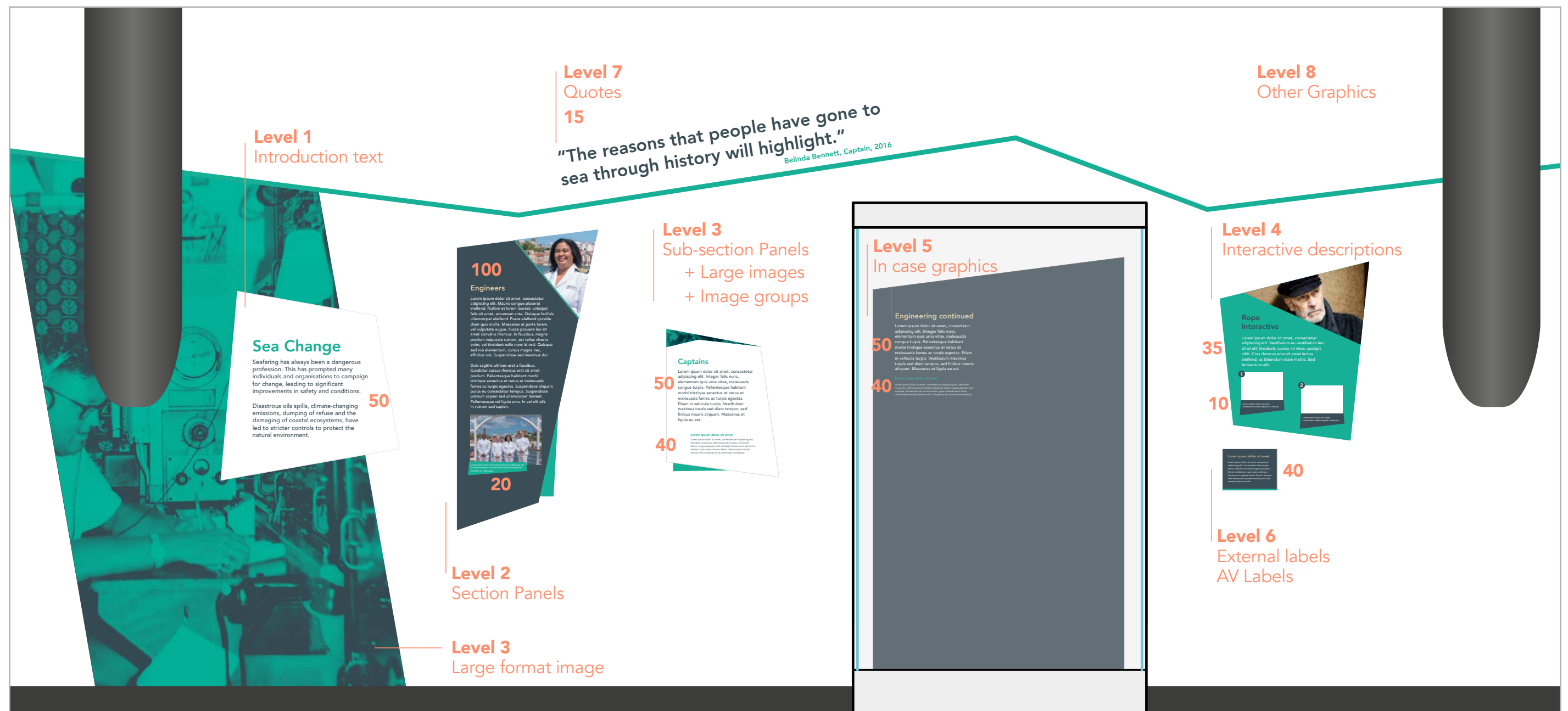


Sea Galleries

Graphic Production Approach

Graphic Panels

Each graphic panel has been assigned a level and the approach detailed for each in the document. This elevation shows each level and how it might appear on the wall.



Level 1 Panels

Introduction text panel. A high end finish is required for all graphics and attention to detail is required in the presentation of each panel. Panels to remain a dense white (Matt or low sheen) clean finish with text printed direct to substrate. Panel must be robust due to being in a permanent gallery. Colours to be matched to Pantone reference.

As the panel will be in a permanent gallery the edges should be produced in a way that the visitor is unable to pick at the graphic and damage it.

Panel should be fixed to the wall with minimal clearance.

Sea Change

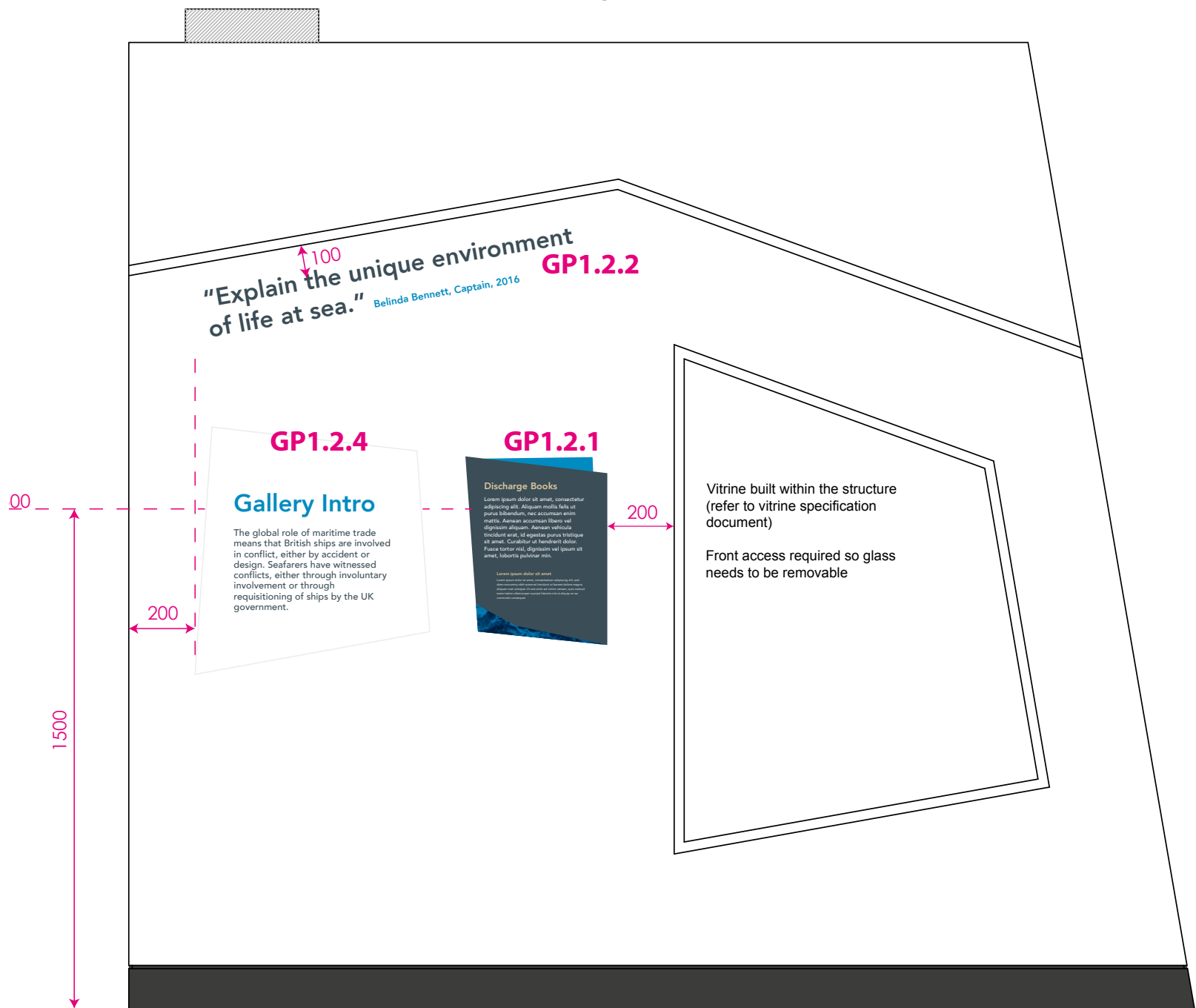
Seafaring has always been a dangerous profession. This has prompted many individuals and organisations to campaign for change, leading to significant improvements in safety and conditions.

Disastrous oils spills, climate-changing emissions, dumping of refuse and the damaging of coastal ecosystems, have led to stricter controls to protect the natural environment.

A Sailor's Life

Seafarers work and live in a unique environment with a distinctive culture. Traditions of music, entertainment, language and art are shaped by life on board and sailing around the globe.

Today's seafarers experience greater home comforts, but the pressures and challenges they face are highlighting issues relating to fatigue, isolation and stress.

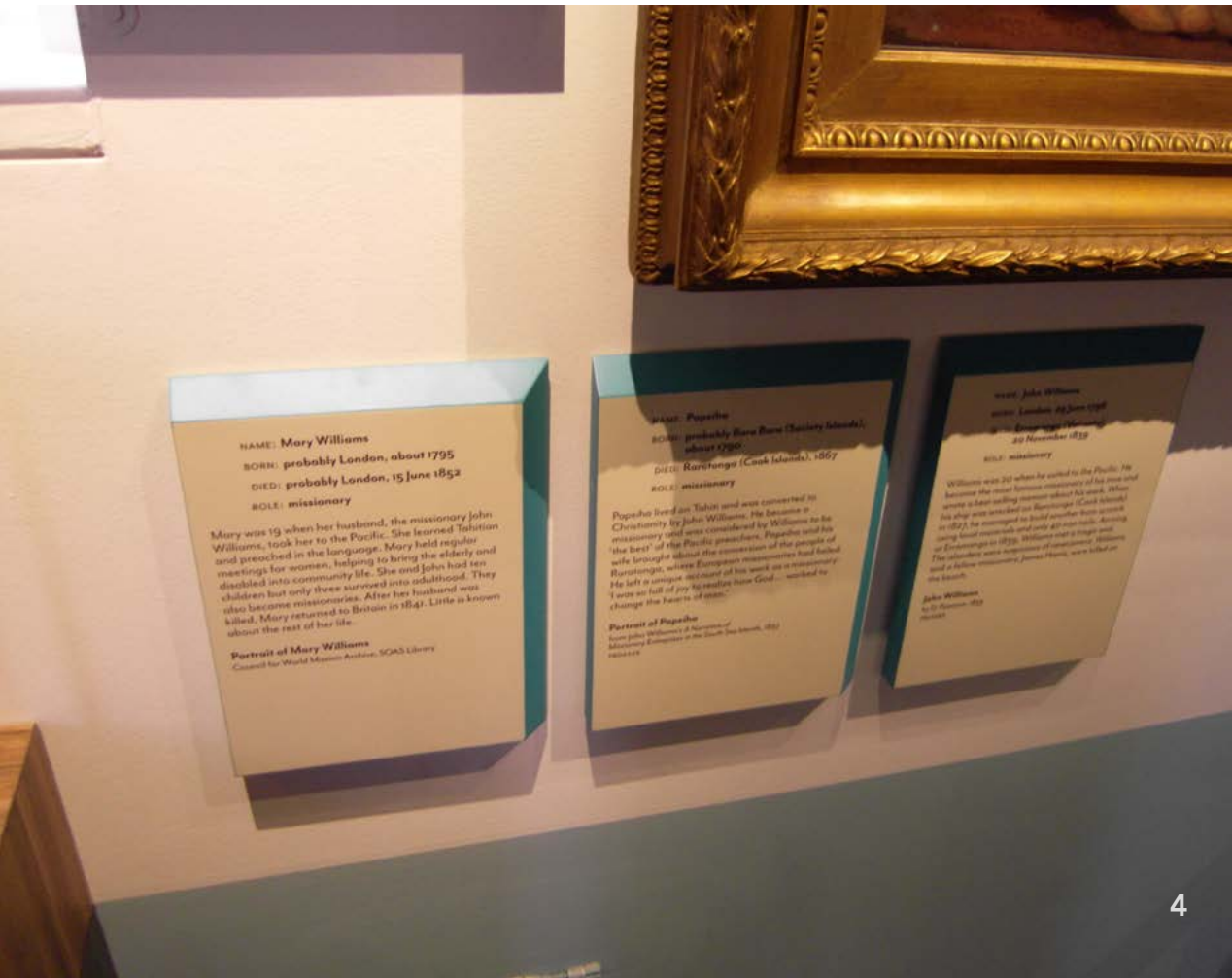


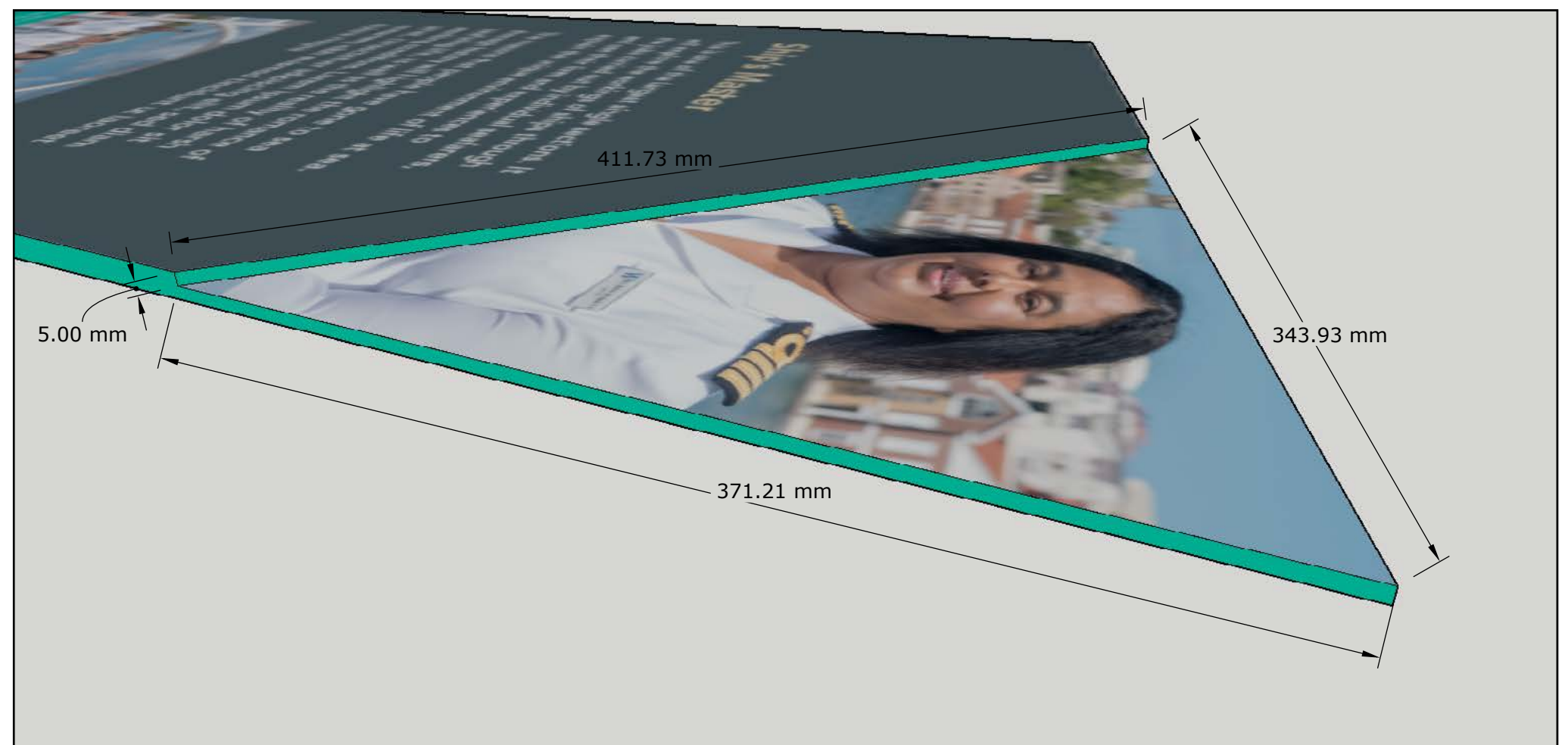
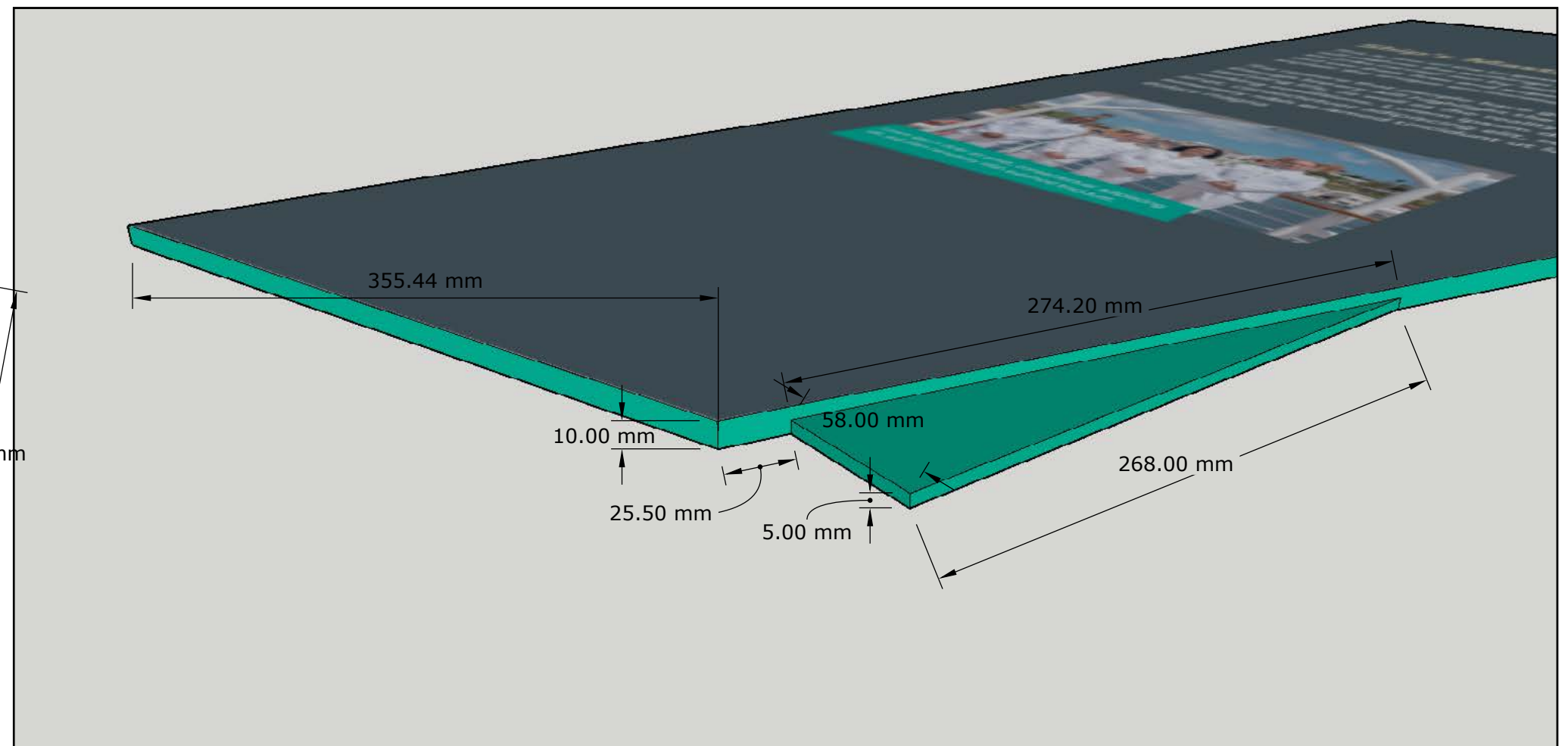
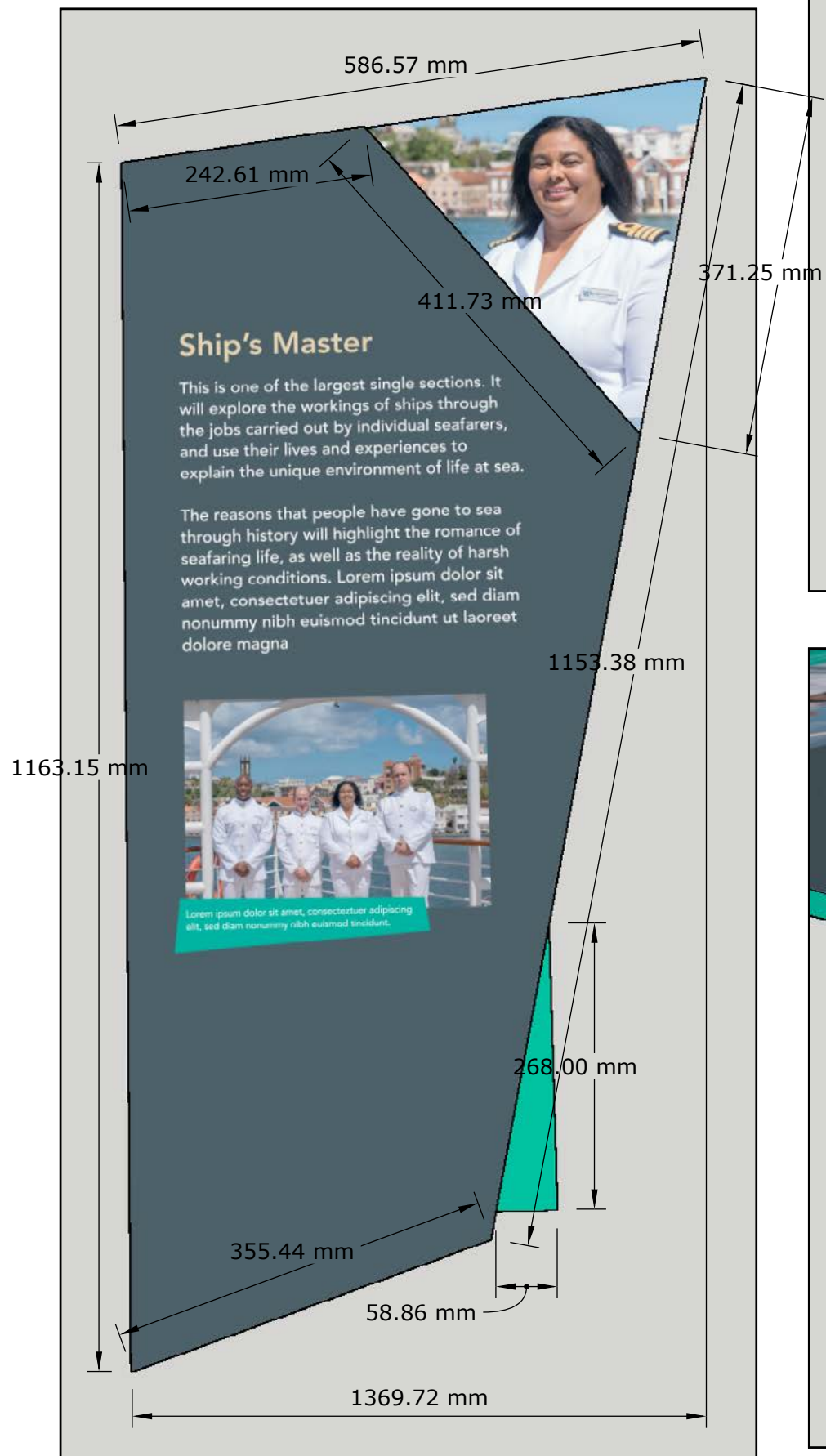
Level 2 Panels

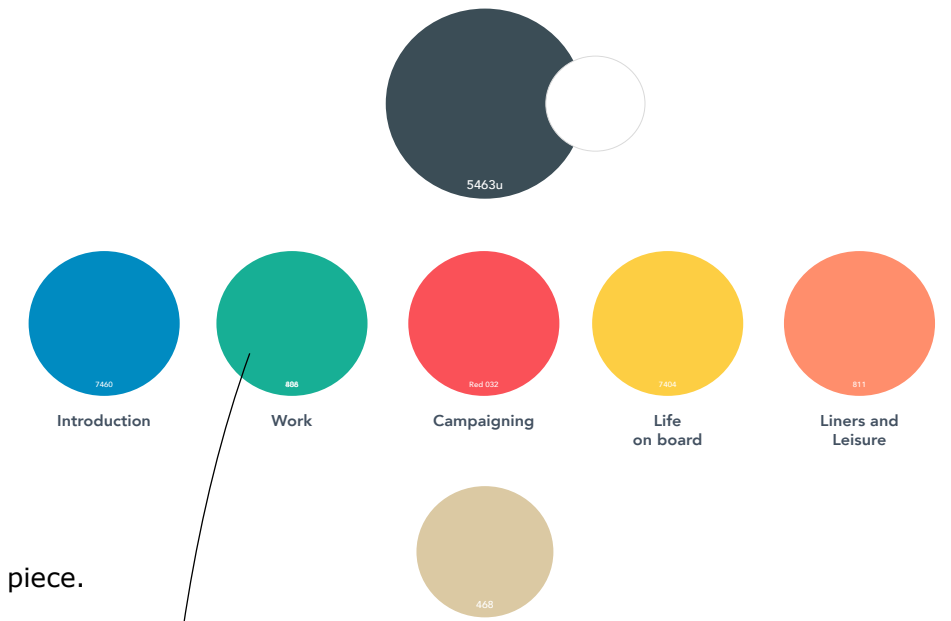
Section panels. A high end finish is required for all graphics and attention to detail is required in the presentation of each panel. We ask that the panel features 2 'layers' with the image and solid coloured 'fin' on a second layer as seen on page 4. The main aim is to get an edge which is one colour as seen in the examples here. This colour is to be a Pantone reference which matches the section colour.

As the panel will be in a permanent gallery the edges should be produced in a way that the visitor is unable to pick at the graphic and damage it.

Panel should be fixed to the wall with minimal clearance.







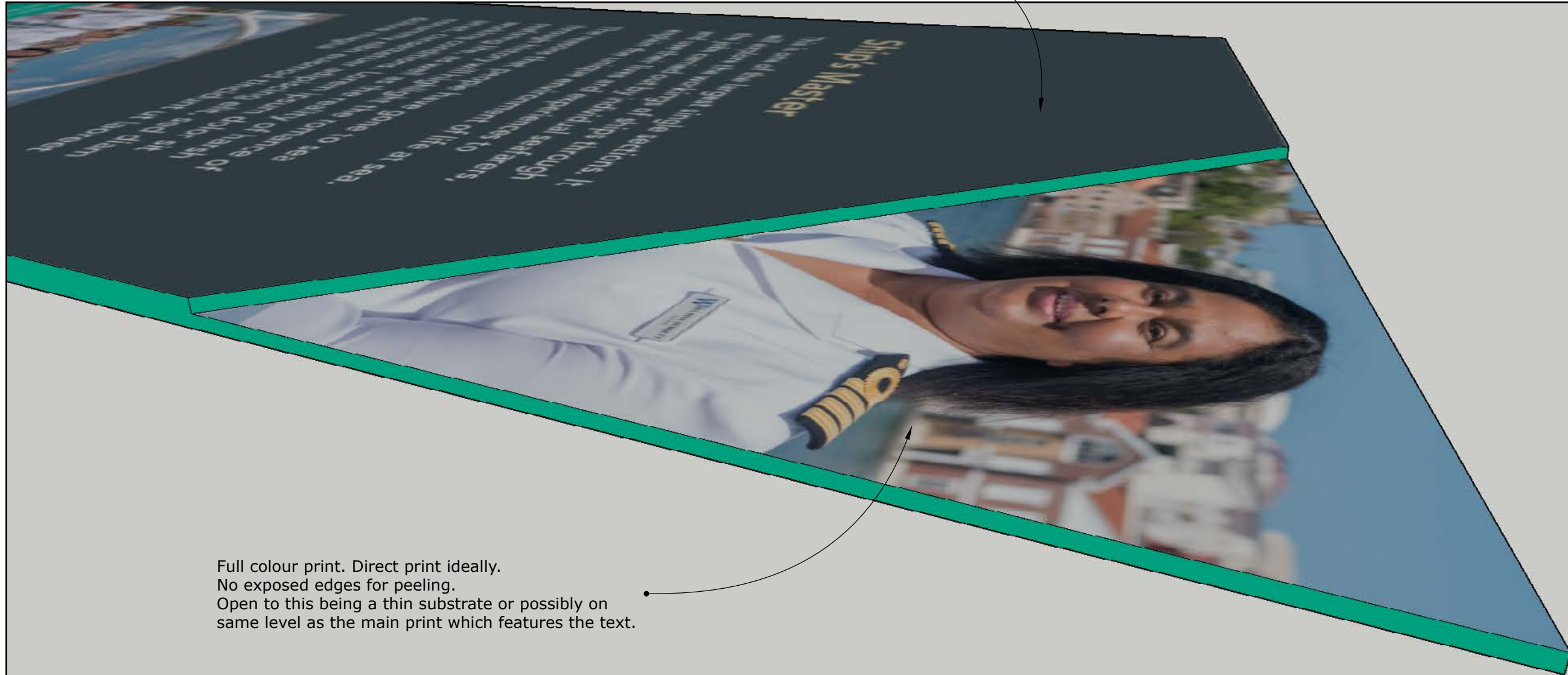
Print to front face. Print white if required.
No exposed edges for peeling.

Constructed from durable and premium substrate in one piece.
Suggest 10-18mm thick. Edge to appear in one colour.

Pantone 808u

5-9mm depending on substrate used

Print to front face. Print white if required.
No exposed edges for peeling.



Full colour print. Direct print ideally.
No exposed edges for peeling.
Open to this being a thin substrate or possibly on
same level as the main print which features the text.

Level 3 Panels

Level 3 sub-section panels carry additional information for the section. Solid surface substrate to feature a similar fin at the bottom to the Level 2 panels. Colours to match Pantone reference for the section.

Level 3 panels featuring images can be produced on a substrate similar to the Level 1 panels featuring a white edge.

As the panels will be in a permanent gallery the edges should be produced in a way that the visitor is unable to pick at the graphic and damage it.

Panels should be fixed to the wall with minimal clearance.



Level 3

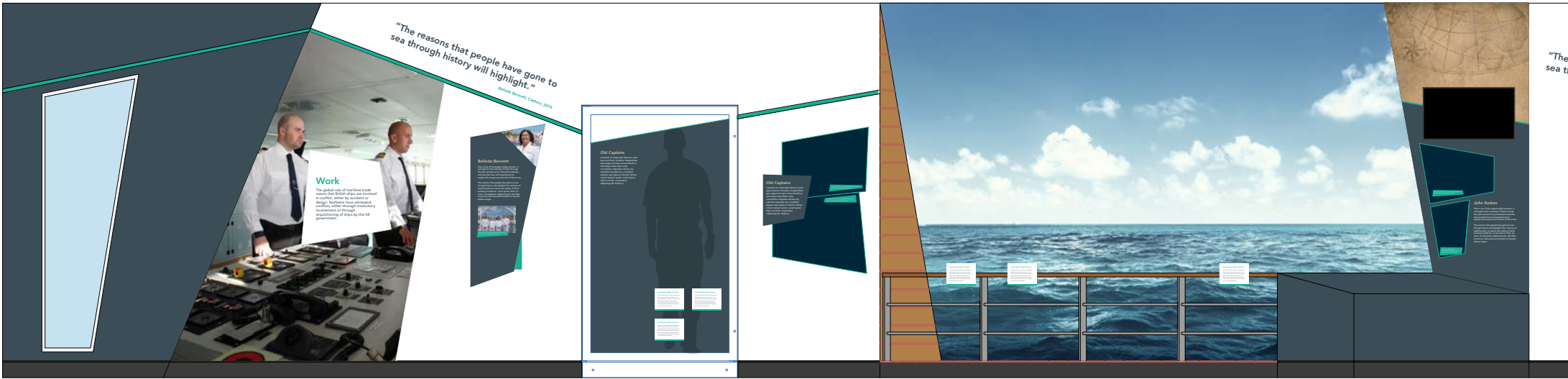
Large format images

Scene setting and background images. These are to be produced in a material which is one piece. Print quality must be premium and edges should be neat where exposed. Exposed edges may require a corner protector.

Some will feature a duo tone gradient map with the pantone colour matching to that section.



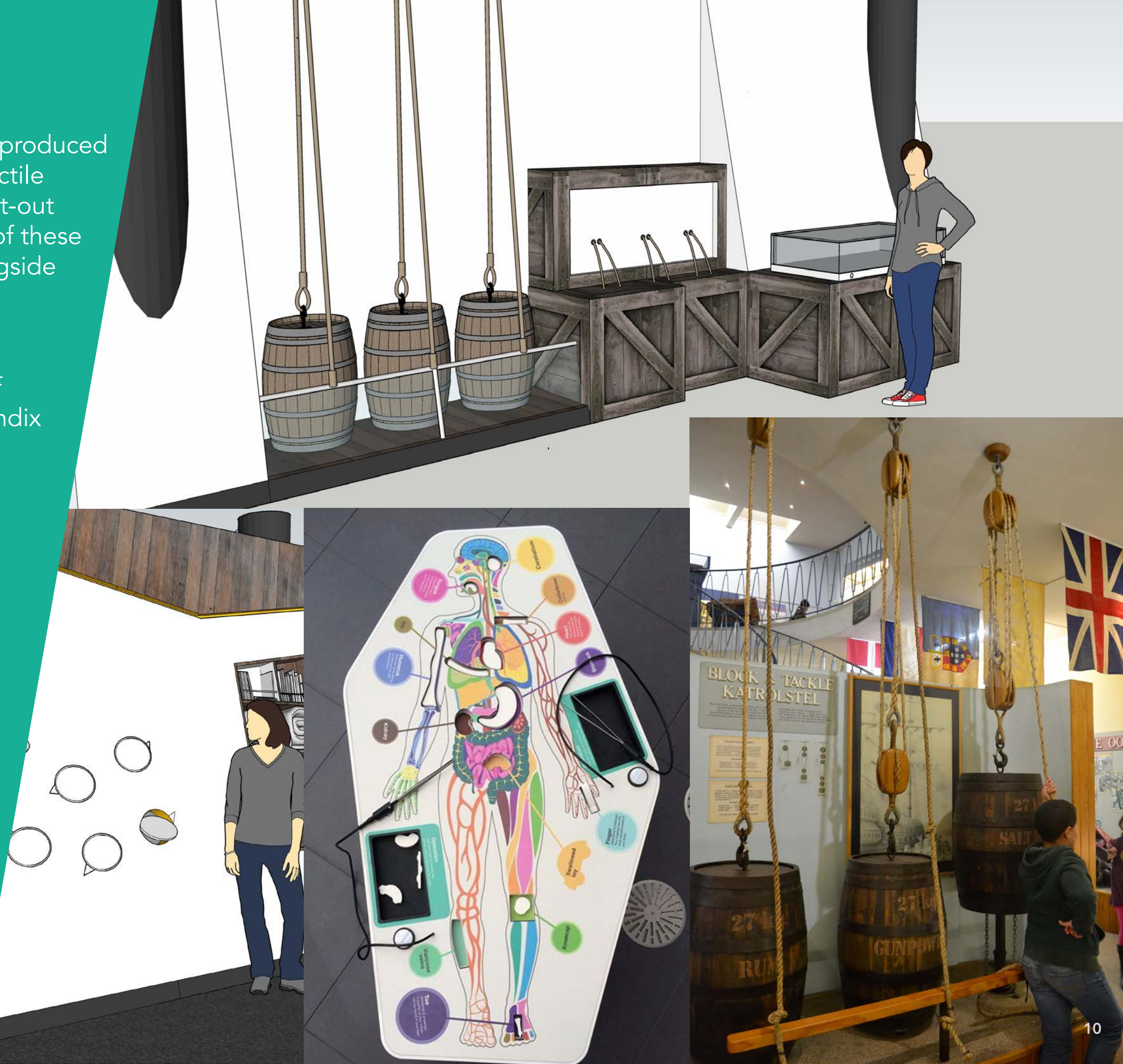
Edge protector



Level 4 Panels

Level 4 panels will need to be produced to help visitors interpret the tactile interactives produced by the fit-out contractor. The size and spec of these panels will be developed alongside the fit-out contractor.

A provisional sum has been allocated for the production of these graphics. Refer to Appendix M.

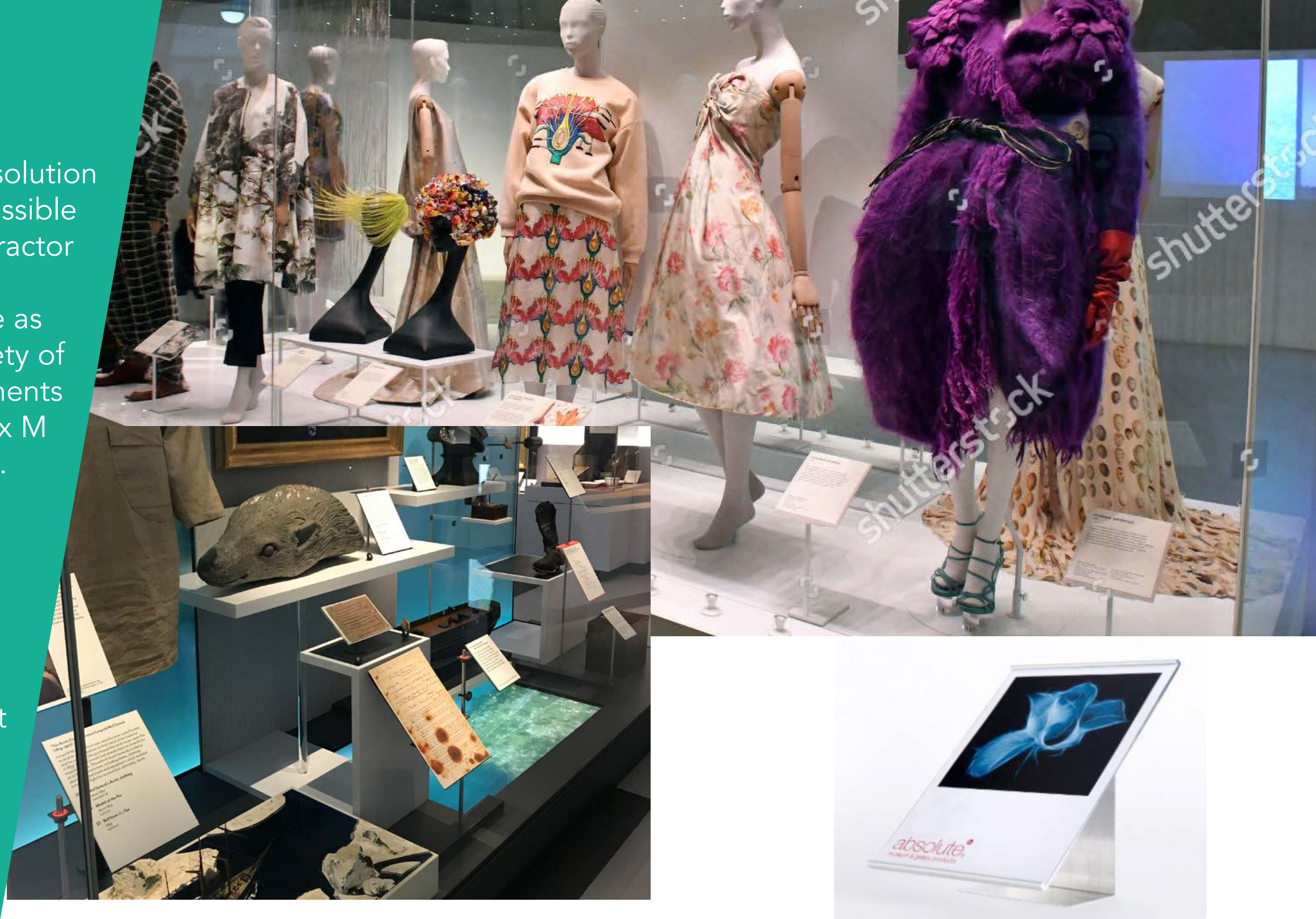


Level 5 Labels & Panels

For labels in cases we require a solution which shows the label at an accessible height and angle. Graphics contractor to source suitable label holder similar to the images shown here as examples. We will require a variety of sizes depending on the requirements of the case display. See appendix M for suggested approximate sizes.

Level 5 in case panel to be wrapped around free issue substrate.

Materials which don't appear on the NML Approved Materials List (Appendix L) must go through a process called Oddy Testing. Any other materials suggested for the production approach of Level 5 graphics should be provided in tender response along with specification sheet in order for testing to take place.



Rail Labels

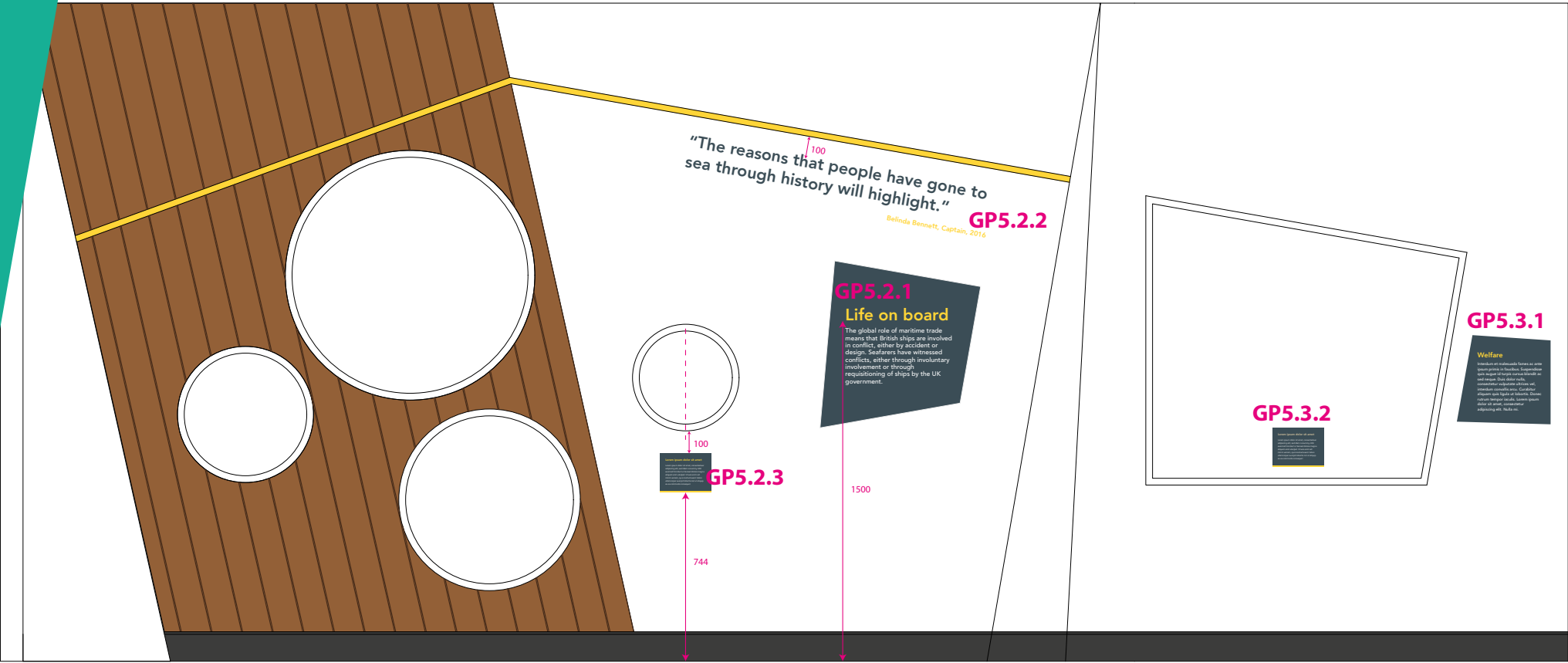
The gallery will feature appropriate use of authentic ship railings to separate the visitor from open display objects. The labels for these objects will be situated on these railings. Therefore a suitable approach is required which allows for a robust label to be produced and mounted to the railings. The fixings and label should be able to hold out within a permanent gallery. Graphics Contractor to liaise with Fit-out Contractor for design solution to fit the label to the railings.

As the labels will be in a permanent gallery the edges should be produced in a way that the visitor is unable to pick at the graphic and damage it.



Level 7

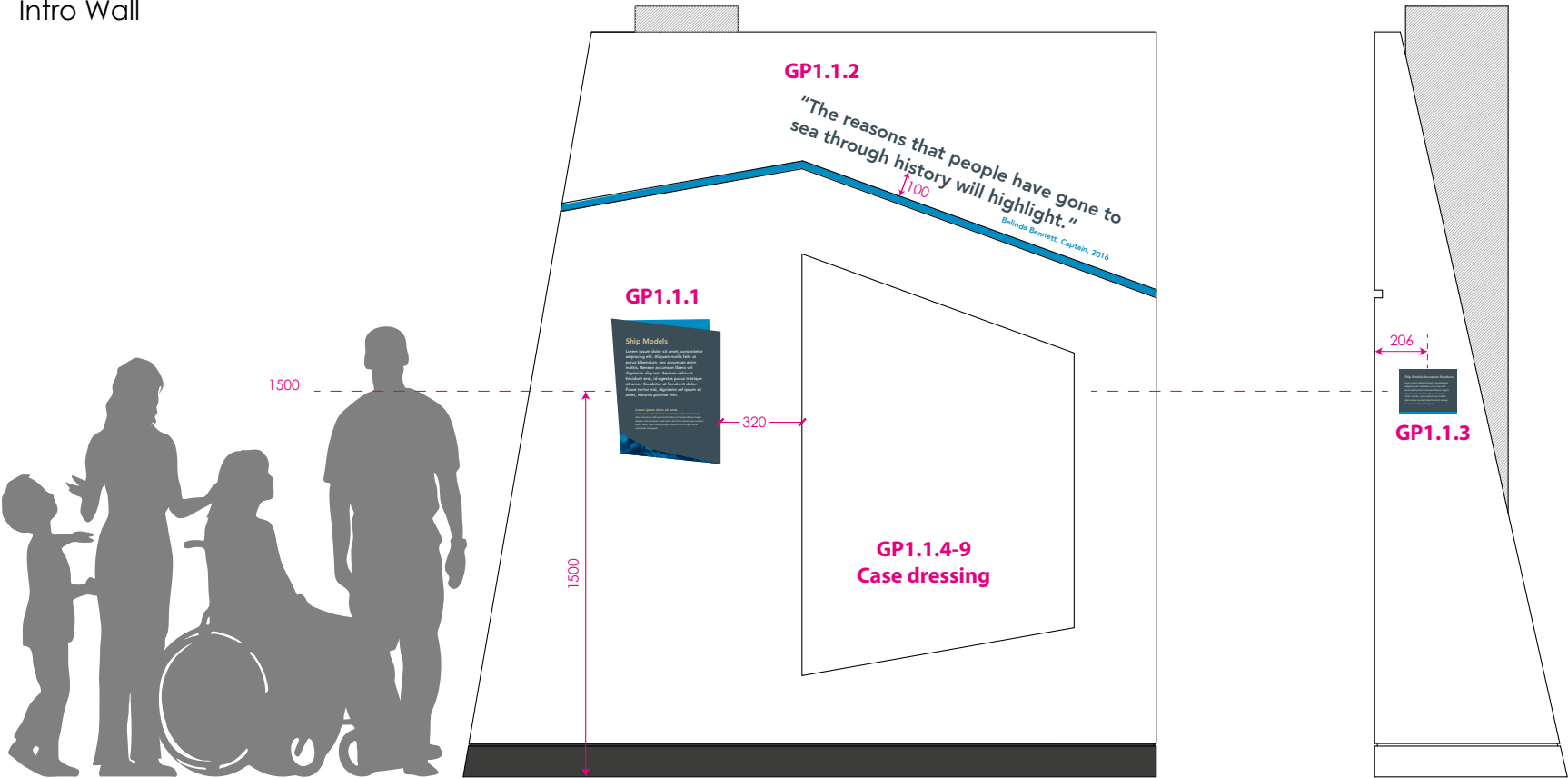
Level 7 graphics are high level quotes. These are typically cut vinyl and applied direct to wall. A matt or low sheen finish is required and vinyl must be high tac.



"As a female captain you have overcome pretty much most challenges in the industry by this point."

Belinda Bennett

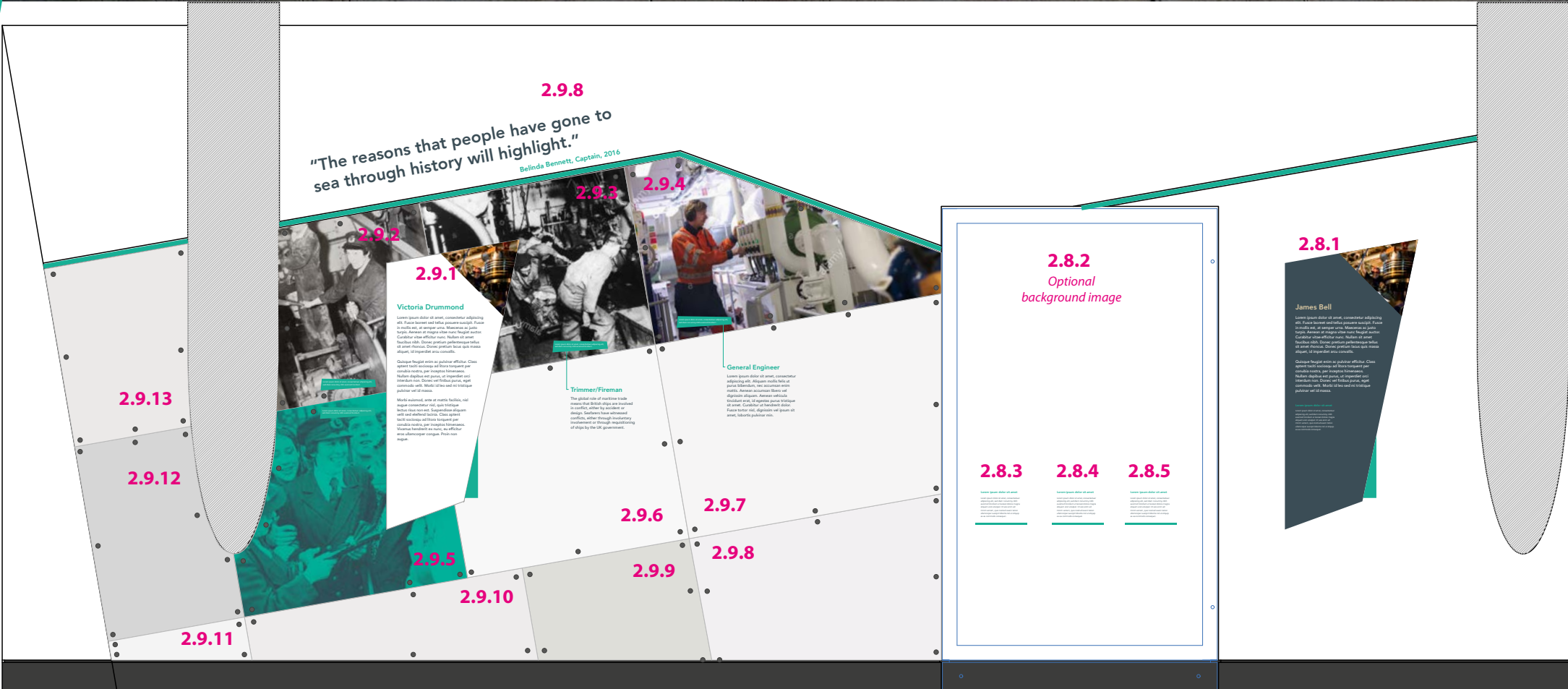
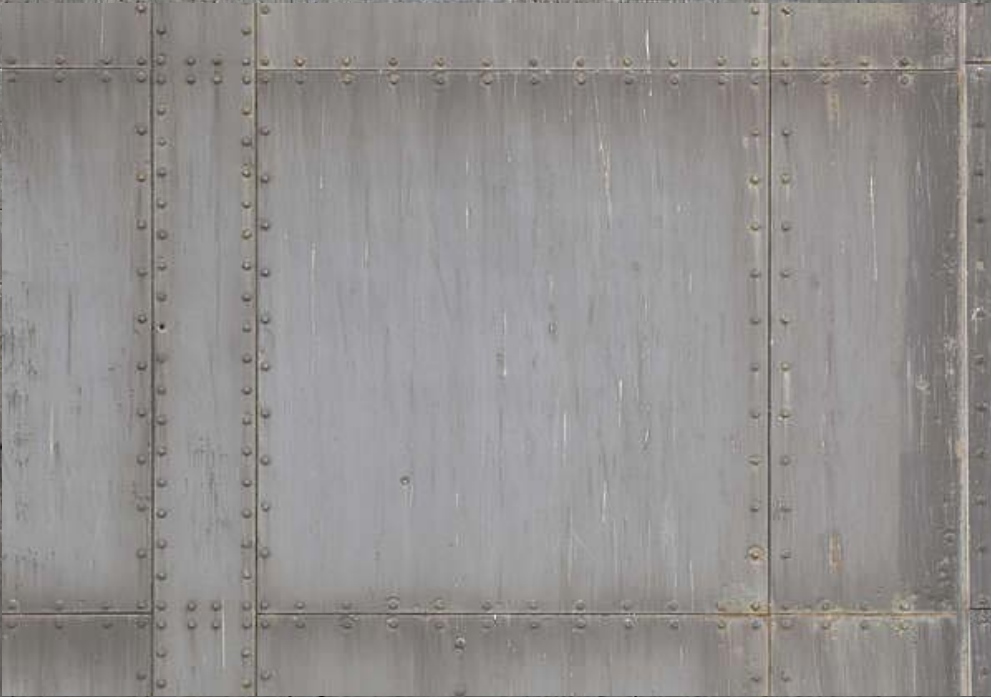
NML - 02
Intro Wall



Authentic Materials

We are hoping to include a number of authentic nautical materials within the gallery and hope that some can be printed to directly. In 2 areas specifically we would like to feature some metallic materials which could have come from a ship. We hope to apply these panels to the walls using authentic rivets.

We are open to suggestions for further use of authentic materials within the gallery. Graphics Contractor to source these materials and provide costs.



Liners & Leisure Posters

In the Liners & Leisure section we would like to produce a selection of posters advertising cruise liners above a case showing a large ship model. We would like the posters (GP6.8.7 - GP6.8.16) produced on black f/ex and brought forward using a suitable rod system as shown here. The fixings should be as minimal as possible and the idea is that they are seen to be floating where possible. The posters are to be mounted onto a board(s) and then installed above the case shown.

Installation approach to be discussed with Fit-out Contractor.

