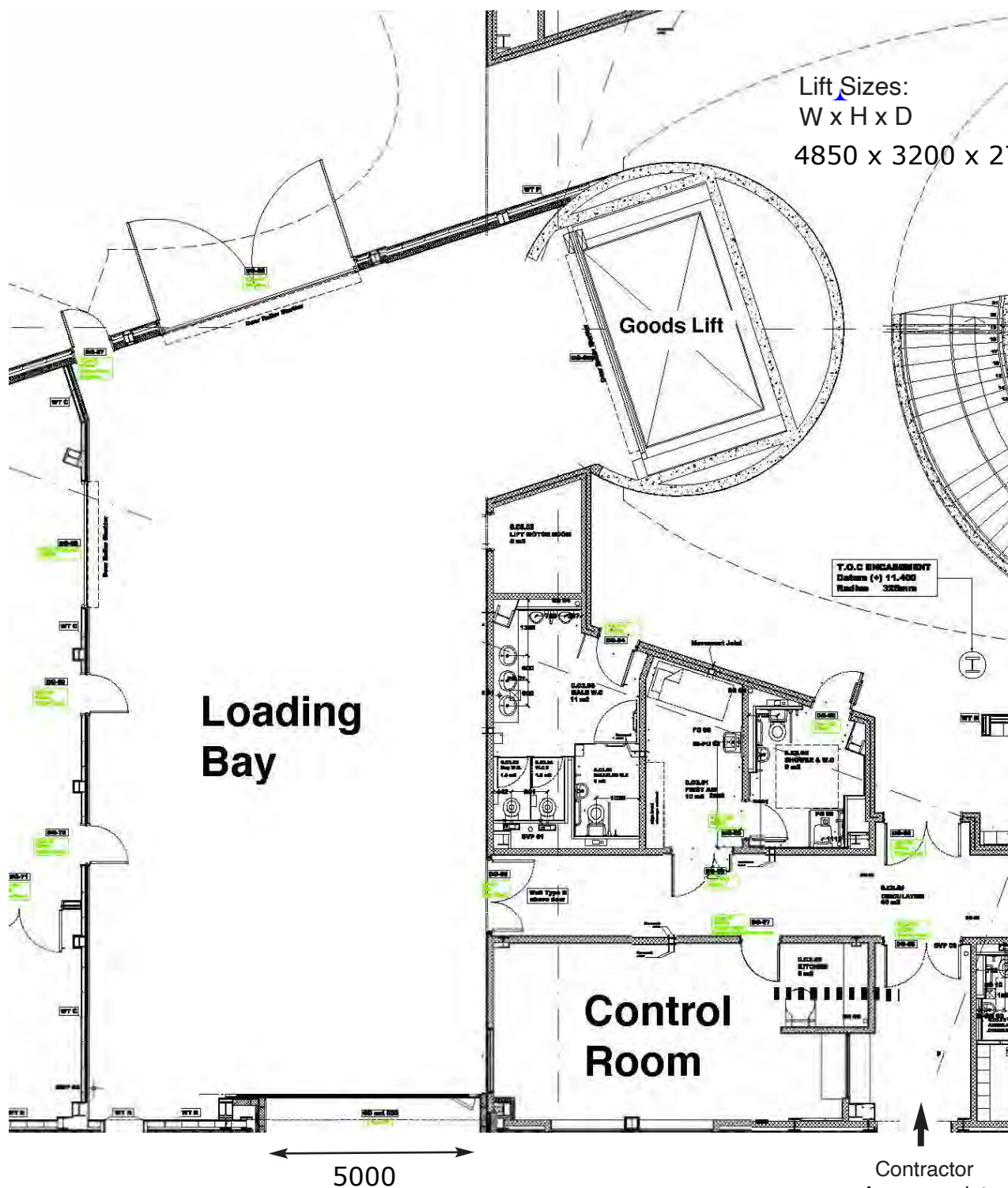


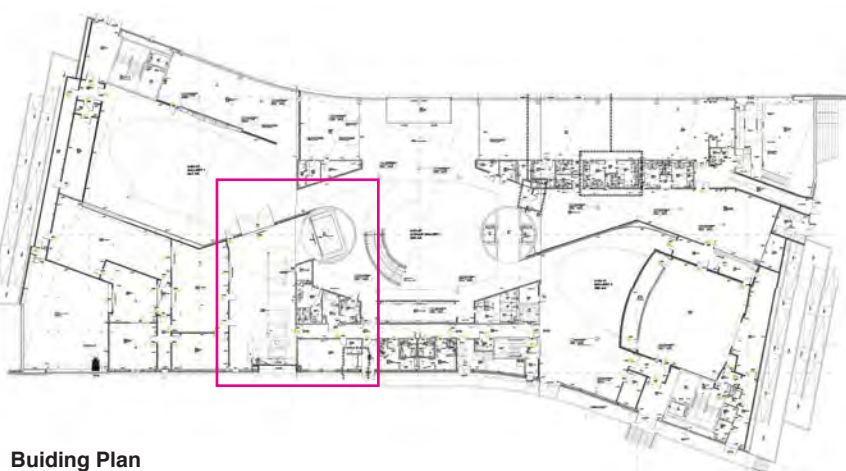
Museum of Liverpool Loading Bay Access Plan

Lift Sizes:
W x H x D
4850 x 3200 x 2700



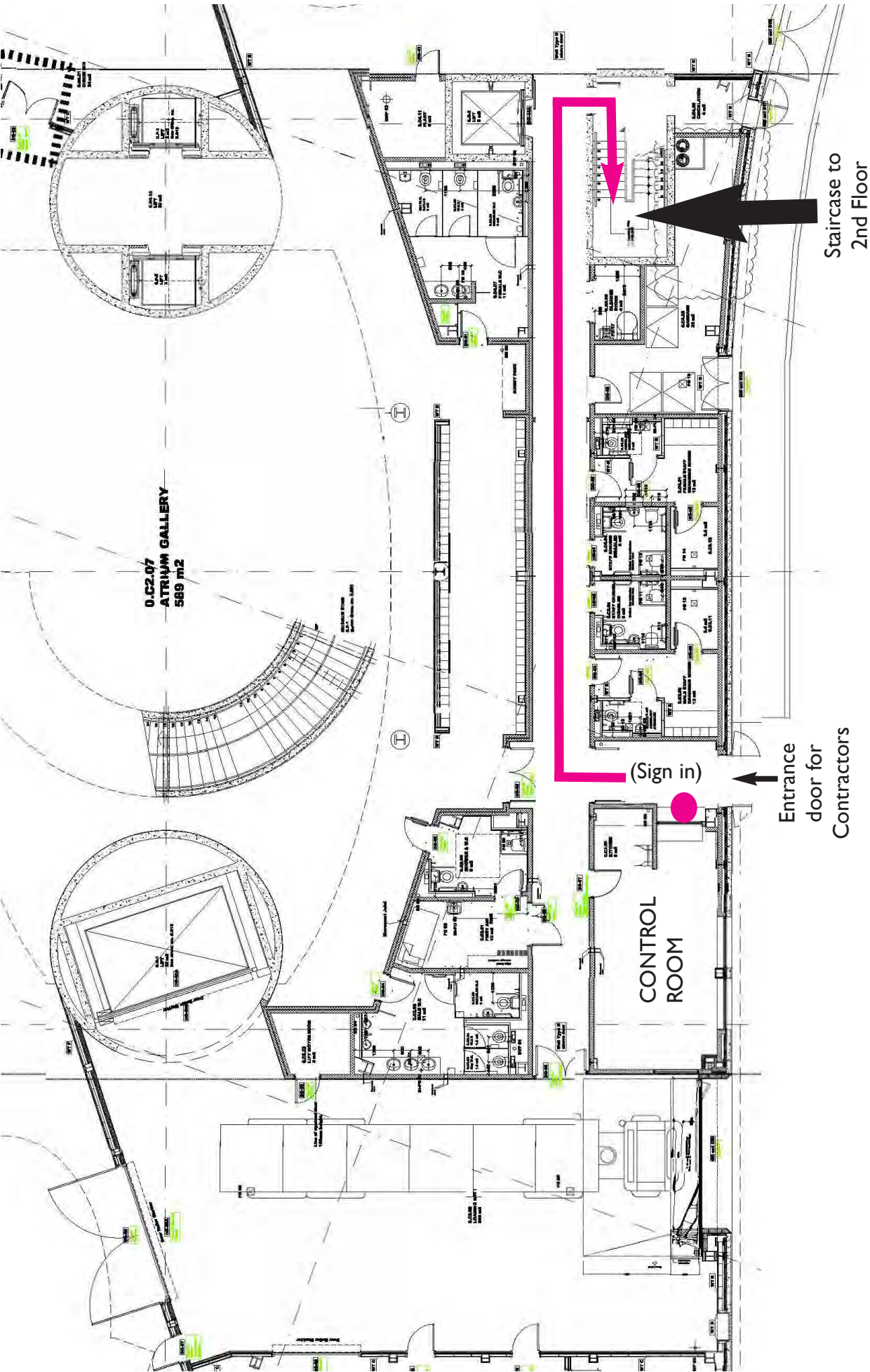
Access route in front of Museum from roadway

Access through Bollard control point

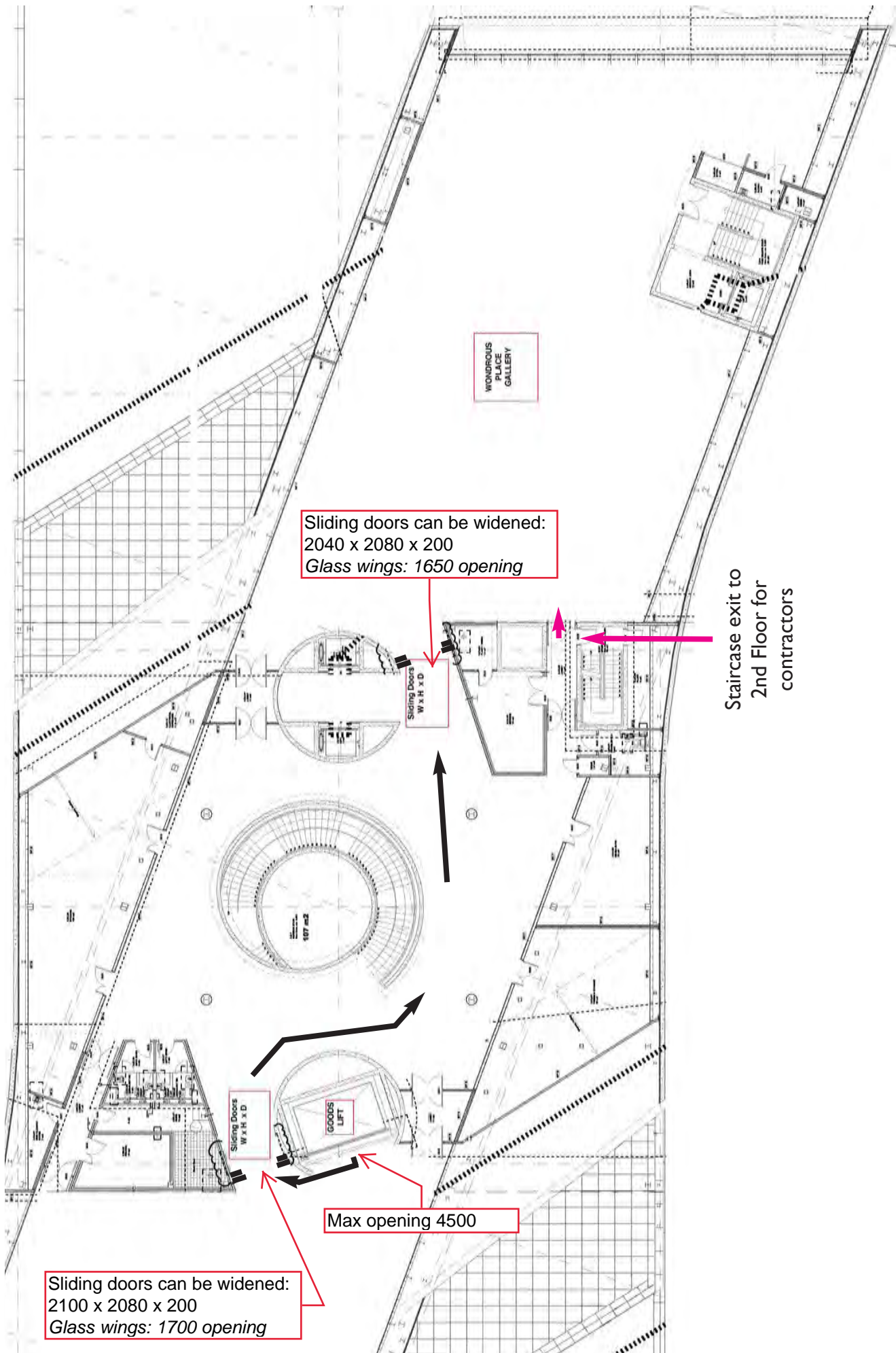


Buinding Plan

Museum of Liverpool Contractor Access Plan to Wondrous Place gallery



Museum of Liverpool Second Floor Access Plan



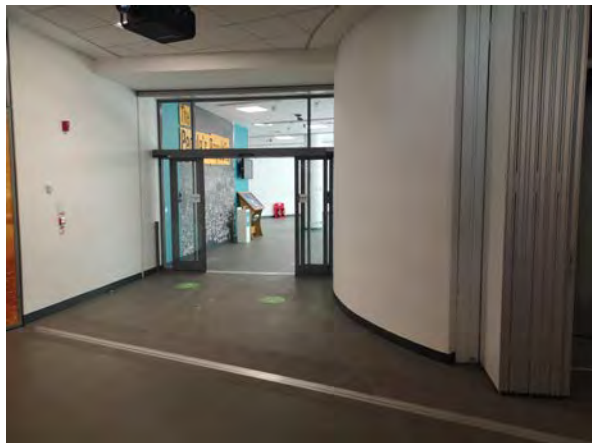
Access route Images to Wondrous Place Gallery from Loading Bay



Goods Lift Interior off Loading Bay
Interior sizes: 4850 x 3200 x 2700



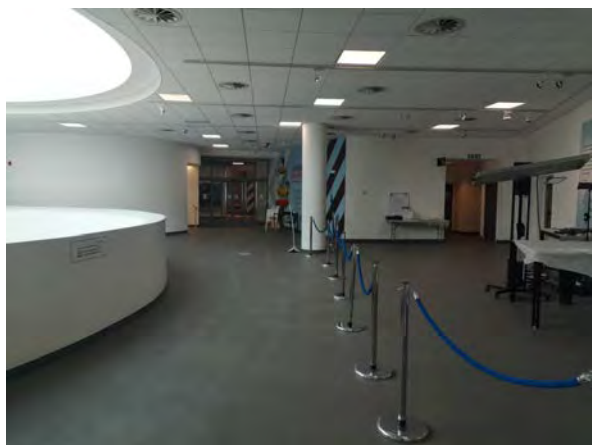
Goods Lift onto Second Floor
Lift exit size: 4500



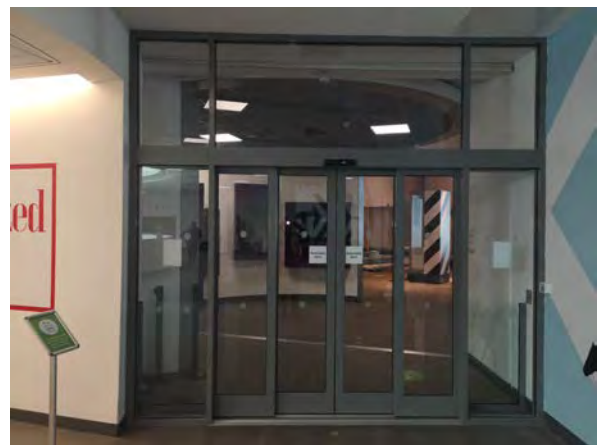
Goods Lift to first set of doors
2100 x 2080 x 200
Glass wings opening: 1700



Skylight Gallery



Skylight Gallery across to WP Gallery



Wondrous Place Gallery Doors
2040 x 2080 x 200
Glass wing opening: 1650