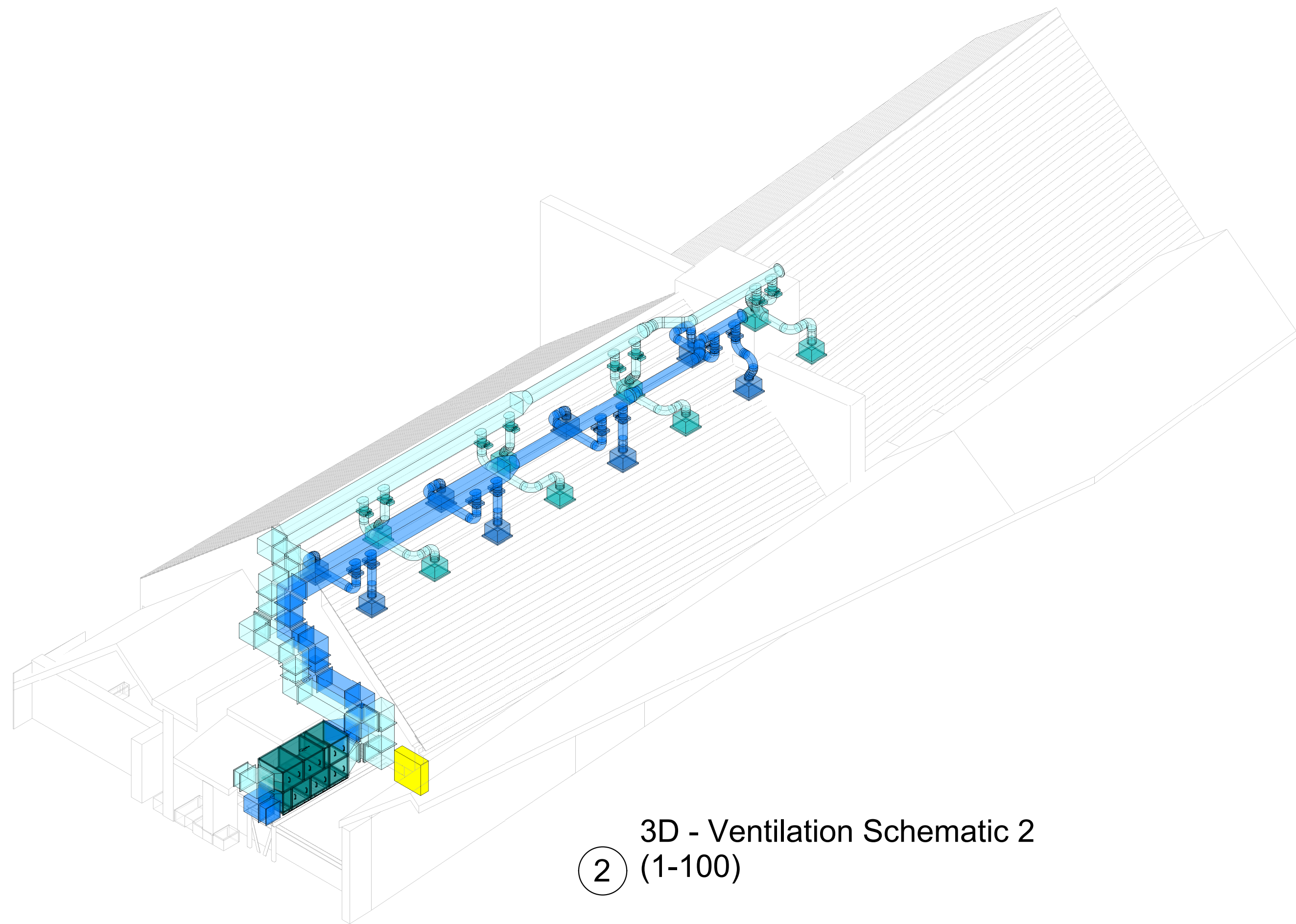
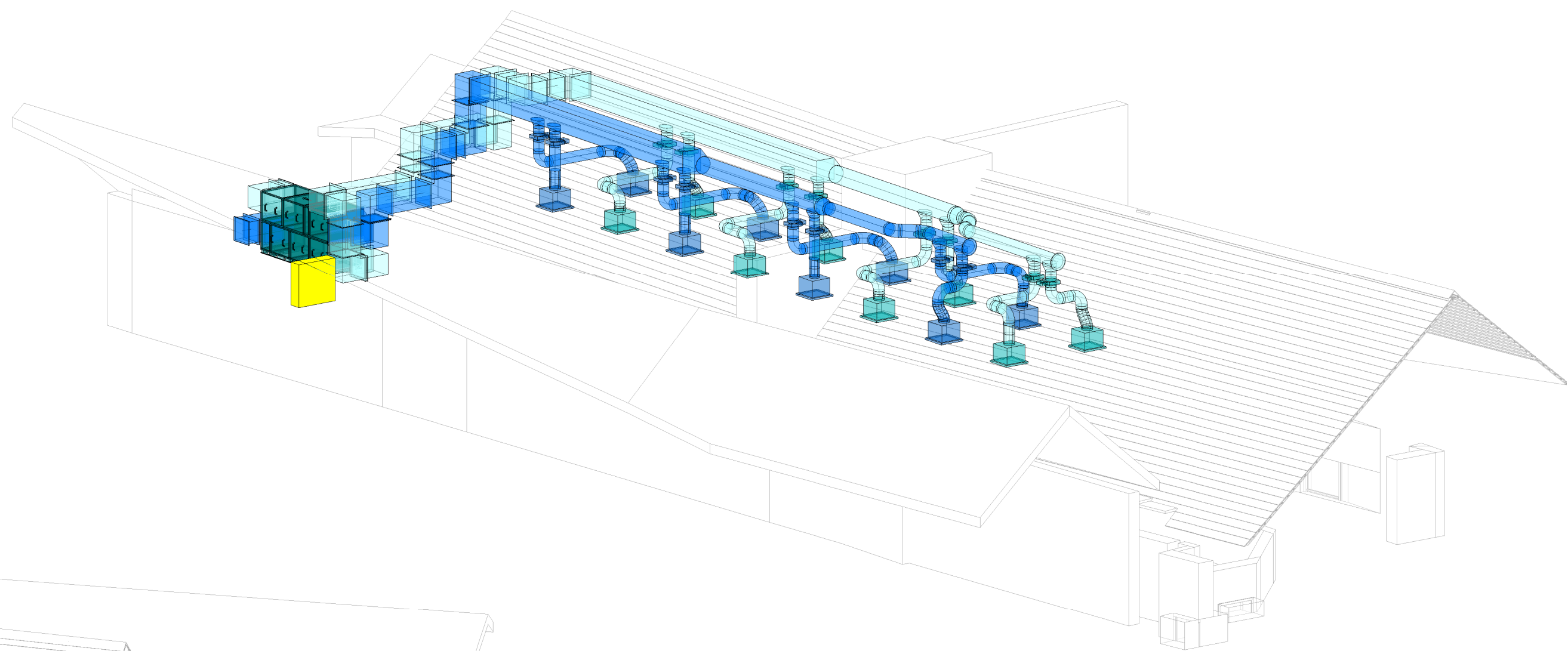


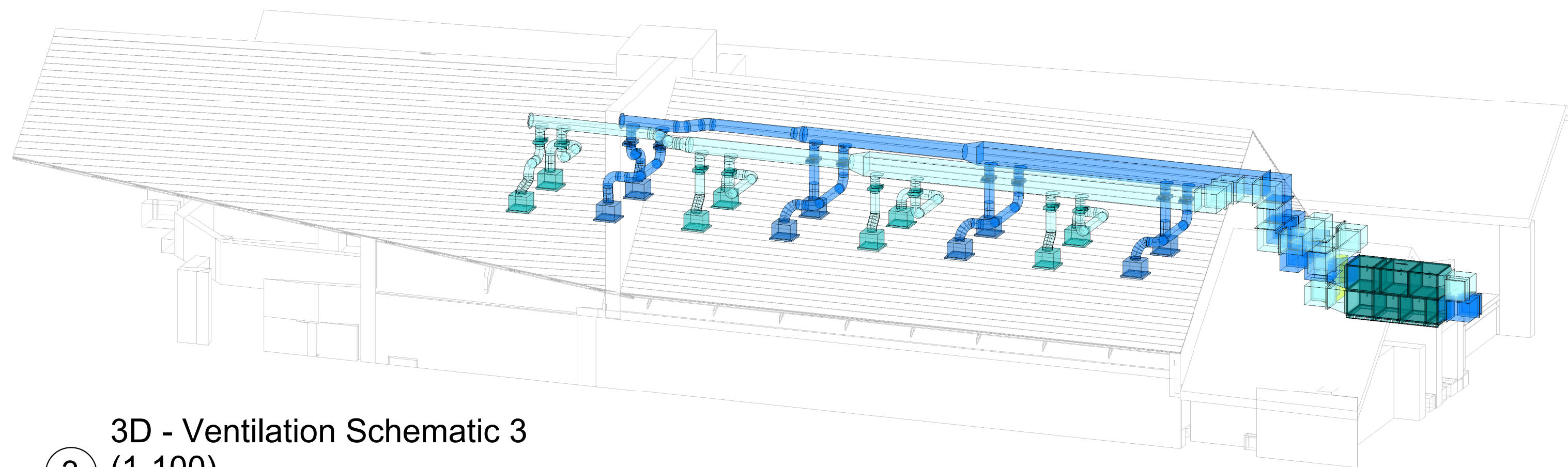
3D - Ventilation Schematic 1
1 (1-100)



3D - Ventilation Schematic 2
2 (1-100)



3D - Ventilation Schematic 3
3 (1-100)



3D - Ventilation Schematic 4
4 (1-100)

NOTES:

01. THIS DRAWING IS TO BE READ IN CONJUNCTION WITH THE SERVICES SPECIFICATION(S), EQUIPMENT SCHEDULES, & ALL OTHER RELEVANT ENGINEERING AND ARCHITECTURAL INFORMATION.
02. DO NOT SCALE FROM THIS DRAWING. WORK TO FIGURED DIMENSIONS ONLY. ALL FIGURED DIMENSIONS TO BE VERIFIED ON SITE. ALL FIGURED DIMENSIONS ARE STATED IN MILLIMETERS (mm) UNLESS OTHERWISE STATED.
03. THIS DRAWING IS COPYRIGHT OF 3de CONSULTING LTD & IS NOT TO BE COPIED OR RE-USED WITHOUT PERMISSION.
04. PRIOR TO UNDERTAKING WORKS, THE CLIENT'S ASBESTOS REGISTER SHOULD BE CONSULTED TO ENSURE THAT THERE ARE NOT ANY KNOWN ASBESTOS CONTAINING MATERIALS WITHIN THE IMMEDIATE VICINITY.
05. WHERE EXISTING SERVICES ARE INDICATED ON THIS DRAWING, THESE HAVE BEEN SHOWN FOR REFERENCE PURPOSES ONLY TO AID IN THE TENDERING PROCESS AND SHOULD NOT BE RELIED UPON AS DETAILED EXISTING DESIGN INFORMATION. AT THE TIME OF PRODUCING THIS DRAWING, NO EXISTING RECORD DRAWINGS WERE MADE AVAILABLE TO 3de CONSULTING LTD AND AS SUCH THIS DRAWING HAS BEEN BASED UPON THE FINDINGS OF A NON-INVASIVE VISUAL SURVEY ONLY.
06. PRIOR TO STARTING WORKS ON SITE, THE APPOINTED CONTRACTOR SHOULD VERIFY THE ACCURACY OF THE EXISTING SERVICES INSTALLATION AND REPORT ANY FUNDAMENTAL DISCREPANCIES TO 3de CONSULTING AS A MATTER OF URGENCY AS NOT TO DELAY THE CONTRACT.
07. CONTRACTOR TO ENSURE THAT ALL SERVICES ARE SUITABLY ISOLATED & MADE-SAFE PRIOR TO REMOVAL.
08. DUCTWORK IS TO BE INSTALLED IN ACCORDANCE WITH THE HVCA SPECIFICATION FOR SHEET METAL DUCTWORK DW144.
09. ACCESS DOORS/PANELS SHALL BE FITTED IN ACCORDANCE WITH THE DUCTWORK SPECIFICATION DW144. EXACT POSITIONS OF ACCESS DOORS/PANELS ARE TO BE DETERMINED ON SITE.
10. FINAL CONNECTIONS TO GRILLES & PLENUM BOXES IS TO BE MADE WITH FLEXIBLE DUCTING. FLEXIBLE DUCTWORK LENGTHS SHALL NOT EXCEED 500mm AND SHALL NOT BE USED FOR CHANGES OF DIRECTION.
11. ISOLATION & VIBRATION MOUNTS, FITTINGS AND FLEXIBLE CONNECTIONS TO BE INSTALLED TO ALL AHUS, EXTRACT FANS, HEAT RECOVERY UNITS & FAN COIL UNITS.
12. VOLUME CONTROL DAMPERS SHALL BE OF THE MULTI BLADE OPPOSED TYPE SUITABLE FOR CIRCULAR & RECTANGULAR DUCTWORK. DUCTS 150mm DIAMETER AND BELOW SHALL BE OF THE IRIS TYPE.
13. FOR DETAILS OF GRILLES, DIFFUSERS & ATTENUATOR REFER TO SCHEDULES OF EQUIPMENT.
14. EXACT POSITION OF CEILING MOUNTED GRILLES ARE TO BE CO-ORDINATED WITH LIGHTING AND OTHER CEILING MOUNTED SERVICES.

LEGEND:

AHU	AIR HANDLING UNIT
DTB	DROP TO BELOW
EG	EXTRACT GRILLE
SD	SUPPLY DIFFUSER
VCD	VOLUME CONTROL DAMPER

P02	20/06/2022	TENDER ISSUE	JD	KB
P01	09/06/2022	PRELIMINARY ISSUE FOR COMMENT	JD	KB
REV	DATE	DESCRIPTION	BY	CHKD

3de Consulting Ltd

3de | **3de**

building services design | sustainability consulting

02922 520 347 | 07872 040 347
3de Consulting Ltd, The Bungalow, Waterton Lane,
Waterton, Bridgend, CF31 3YW
jamesd@3deconsulting.co.uk
www.3deconsulting.co.uk

Project CHARTER HALL, OKEHAMPTON MECHANICAL VENTILATION SYSTEM REPLACEMENT				
Discipline MECHANICAL				
Drawing Status SUITABLE FOR TENDER			Status D2	
Title PROPOSED MECHANICAL VENTILATION SERVICES 3D ISOMETRIC VIEW				
Scale @ A1 1:100	Date 08/06/22	Drawn JD	Checked KB	Approved JD
Project No. 3DE-1121	Drawing No. OKE-3DE-XX-ZZ-DR-M-57-0005			Rev P02