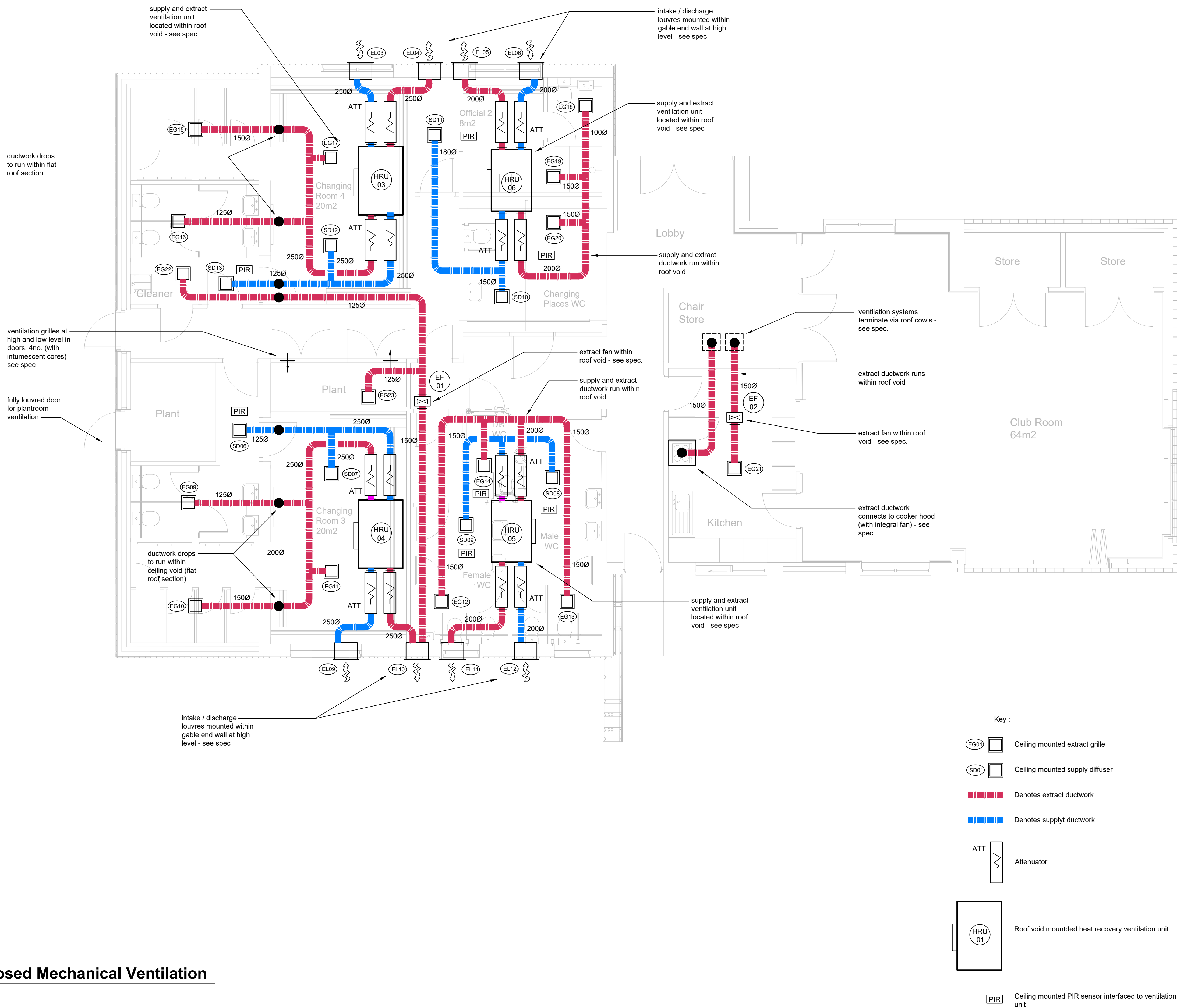


Notes :

- 1) Drawing to be read in conjunction with specification and relevant equipment schedules.
- 2) Final locations of all ceiling mounted grilles to be coordinated with suspended ceiling layout and electrical services.
- 3) Final louvre sizes, setting out, positions and colour finish to be agreed with Architect - see spec.
- 4) All supply and extract grilles to be fitted with OBD type VCD's - see spec.
- 5) Ventilation units located within roof void. Access to units via ceiling hatch and walkways within roof void (by Principle Contractor)
- 6) Final ceiling grille positions to be coordinated with lighting / ceiling mounted electrical services (electrical services to take priority)



1 Proposed Mechanical Ventilation
1:50

C	Revised Tender Issue - updated to suit latest building layouts	JUL '23	SJA	IRW
B	Tender Issue	JUL '22	SJA	IRW
A	Preliminary Issue	JUN '22	SJA	IRW
rev.	description	date	drawn	approved

information ☐ approval ☐ tender ☒ contract ☐ construction ☐

Axis Mechanical & Electrical Consulting Engineers

No.8 Poplars Court
Lenton Lane
Nottingham
NG7 2RR
United Kingdom

tel: +44 (0) 115 9791875
fax: +44 (0) 115 9249179
email: mail@axisconsult.co.uk
web: www.axisconsult.co.uk



client

SAWTRY PARISH COUNCIL

project

GREEN FIELD SPORTS FIELD
SAWTRY, HUNTINGDON

drawing

PROPOSED MECHANICAL VENTILATION

drawn	approved	date	scale
SJA	IRW	JUNE '22	1:50 @ A1

drawing ref.	revision
AX1937-M-001	C