

Thurrock Health Centre background information, geographic and population details

Provision of Primary Medical GP Services at Thurrock Health Centre, 55-57 High Street, Grays, Essex RM17 6NB

The surgery is located within the Thurrock Clinical Commissioning Group. The local council is Thurrock Council.

Thurrock is located in the south west of Essex and covers an area of 64 square miles. The borough forms part of the Thames Gateway regeneration area and has a population of approximately 157,500.

The practice website: <http://www.thurrockhealthcentre.nhs.uk/staff1.aspx>

Background

The current APMS contract for Thurrock Health Centre has previously been extended and now expires on 31st March 2016. NHS England has decided to offer the contract out for re-tender, again via an APMS contract and the term will be for 10 years with the option to extend for two plus three years. NHS England is seeking to identify a provider who will deliver General Medical Services for patients of Thurrock Health Centre under an APMS contract only.

Practice Profile

Practice List Size – 7493 April 2015

Females	Aged 0-4	462
Females	Aged 5-14	452
Females	Aged 15 to 24	498
Females	Aged 25 to 34	1131
Females	Aged 35 to 44	588
Females	Aged 45 to 54	353
Females	Aged 55 to 64	177
Females	Aged 65 to 74	73
Females	Aged 75 to 84	39
Females	Aged 85 to 125	27
Total female		3800
Males	Aged 0-4	493
Males	Aged 5-14	497
Males	Aged 15-24	352
Males	Aged 25 to 34	876
Males	Aged 35 to 44	707
Males	Aged 45 to 54	442
Males	Aged 55 to 64	218
Males	Aged 65 to 74	72
Males	Aged 75 to 84	28

Males	Aged 85 to 125	8
Total Male		3693
Overall Total		7493

Current Contract Position

- The current contractual arrangements will expire at the end of March 2016. It is expected that the new contract will commence on 1st April 2016.
- The incumbent provider currently leases the premises at the High Street, Grays, from NHS Property Services.
- The contract offered will be an Alternative Provider of Medical Services (APMS) agreement.
- Contract offer will be for 10 years, with the possibility for extensions of up to a further five years should the commissioner require.
- The walk-in element of the current service provision is not being re-procured.
- APMS contracts will be subject to all relevant Regulations, Directions and Legislation.
- Staff will be subject to TUPE arrangements.

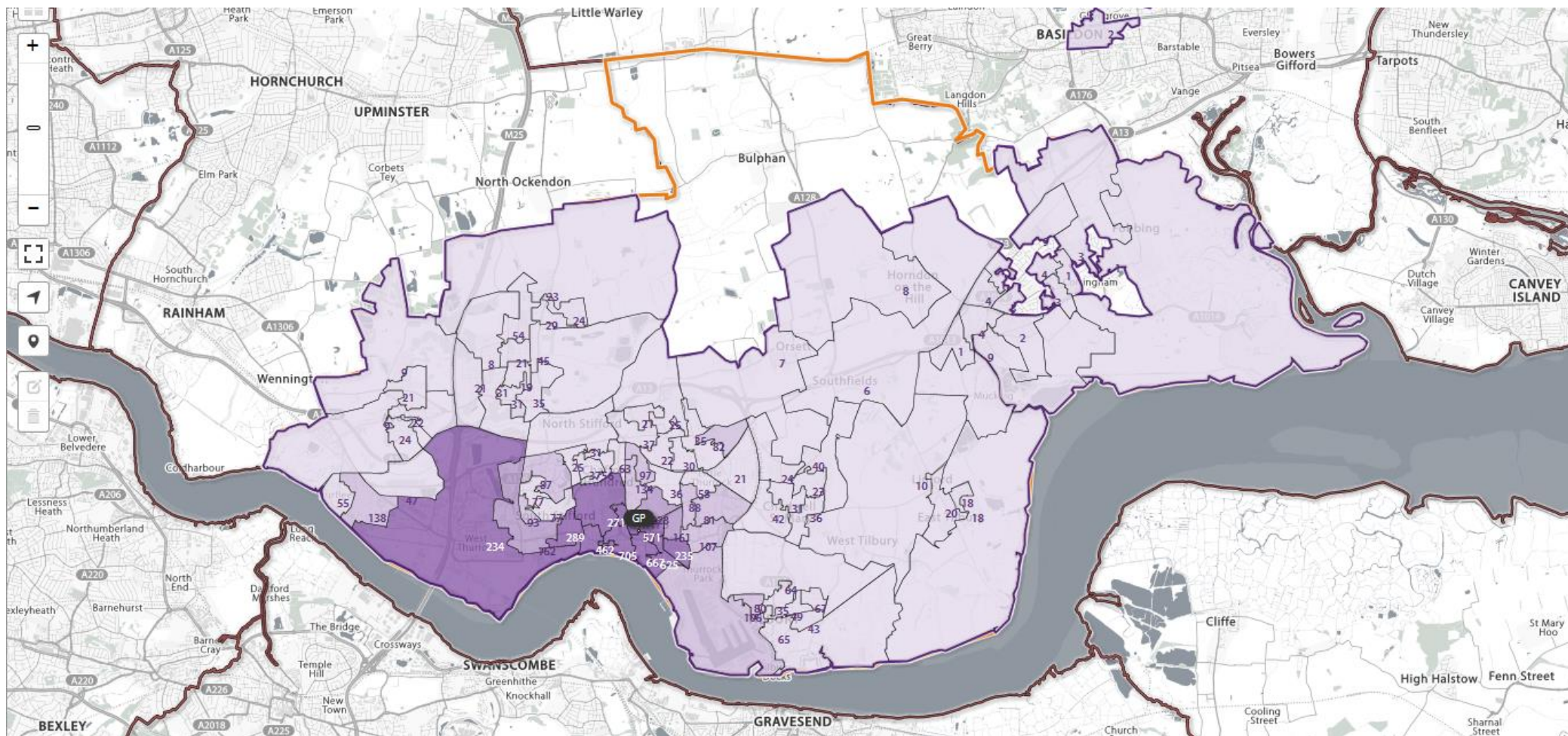
Population Growth in Thurrock

There are several developments planned for the Thurrock area. The predicted growth to 2021 is:

- 16,464 homes
- 39,686 patients
- There is a potential impact of an additional 1,755 patients* (*potential impact is calculated by dividing estimated new residents by practices within 2km of development).
- Projected list size growth** (**projected list size is estimated by extrapolating the actual trend in growth plus the impact of the new developments in the area).

Date	Actual List Size
Jul-13	6,635
Oct-13	6,918
Jan-14	7,051
Apr-14	7,179
Jul-14	7,285
Oct-14	7,456
Jan-15	7,610
Apr-15	7,493

Date	Projected** List Size
December 2021	11,132



Practice Boundary Area – Thurrock Health Centre