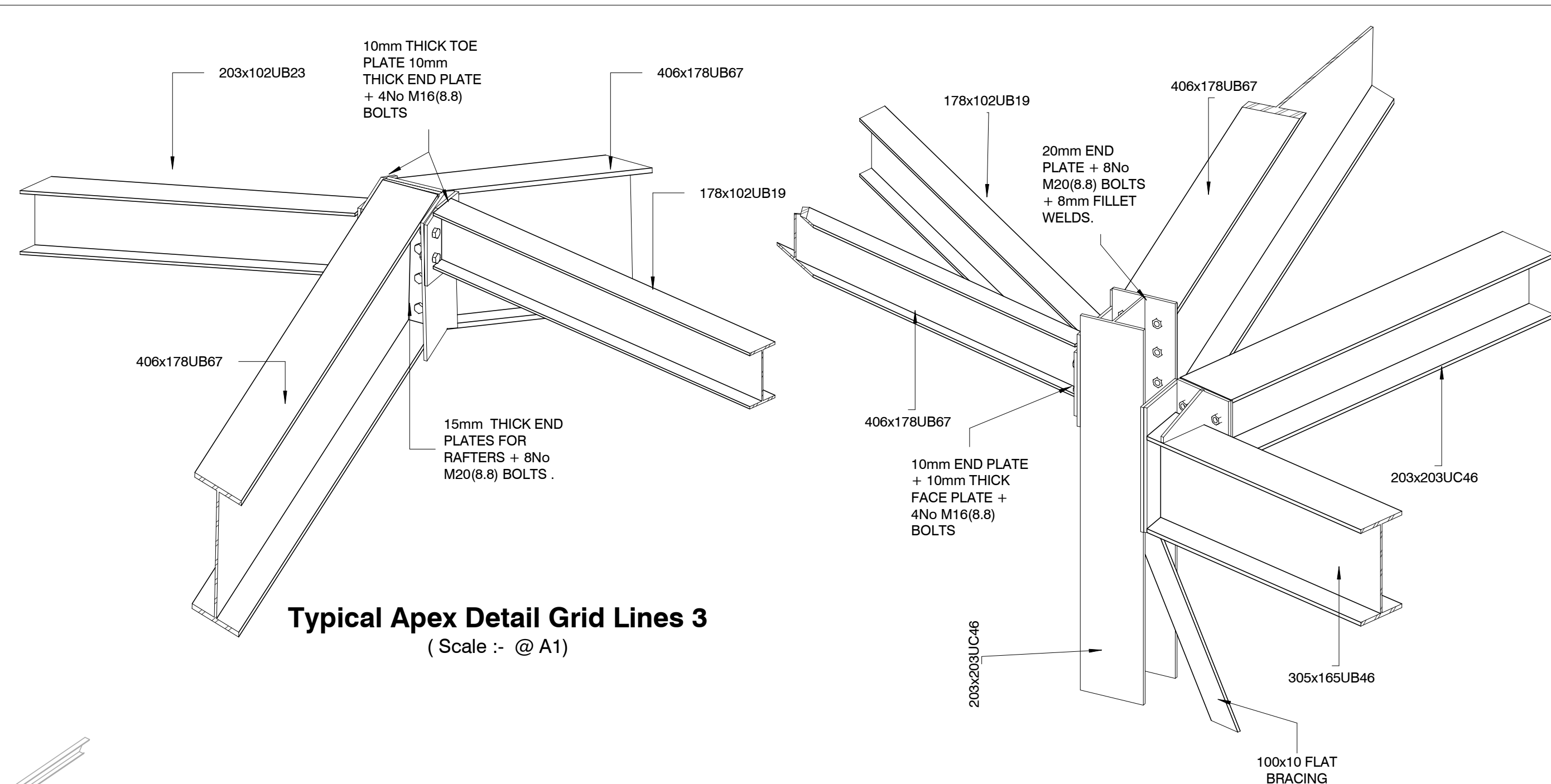
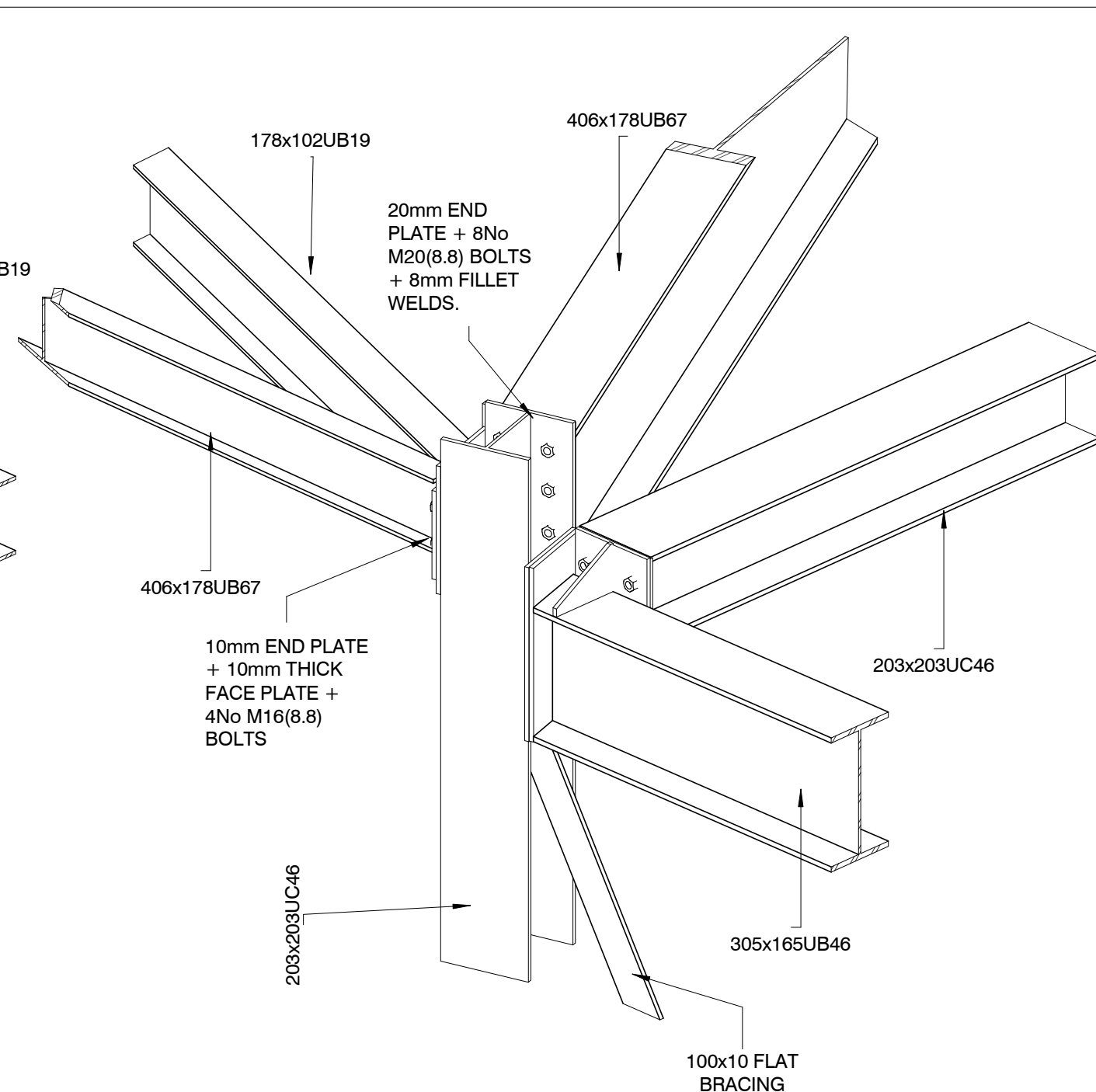


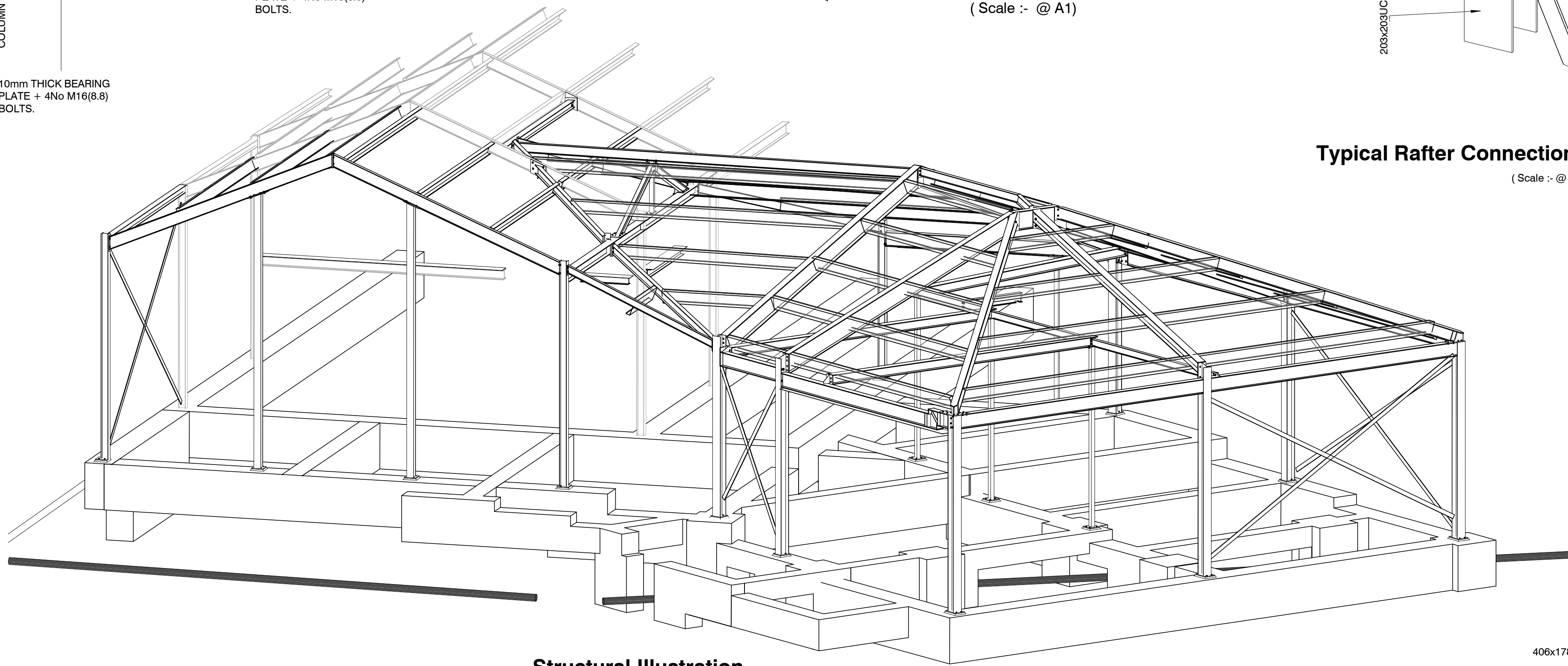
**Typical Connection Detail Grid Lines 4**  
(Scale :- @ A1)



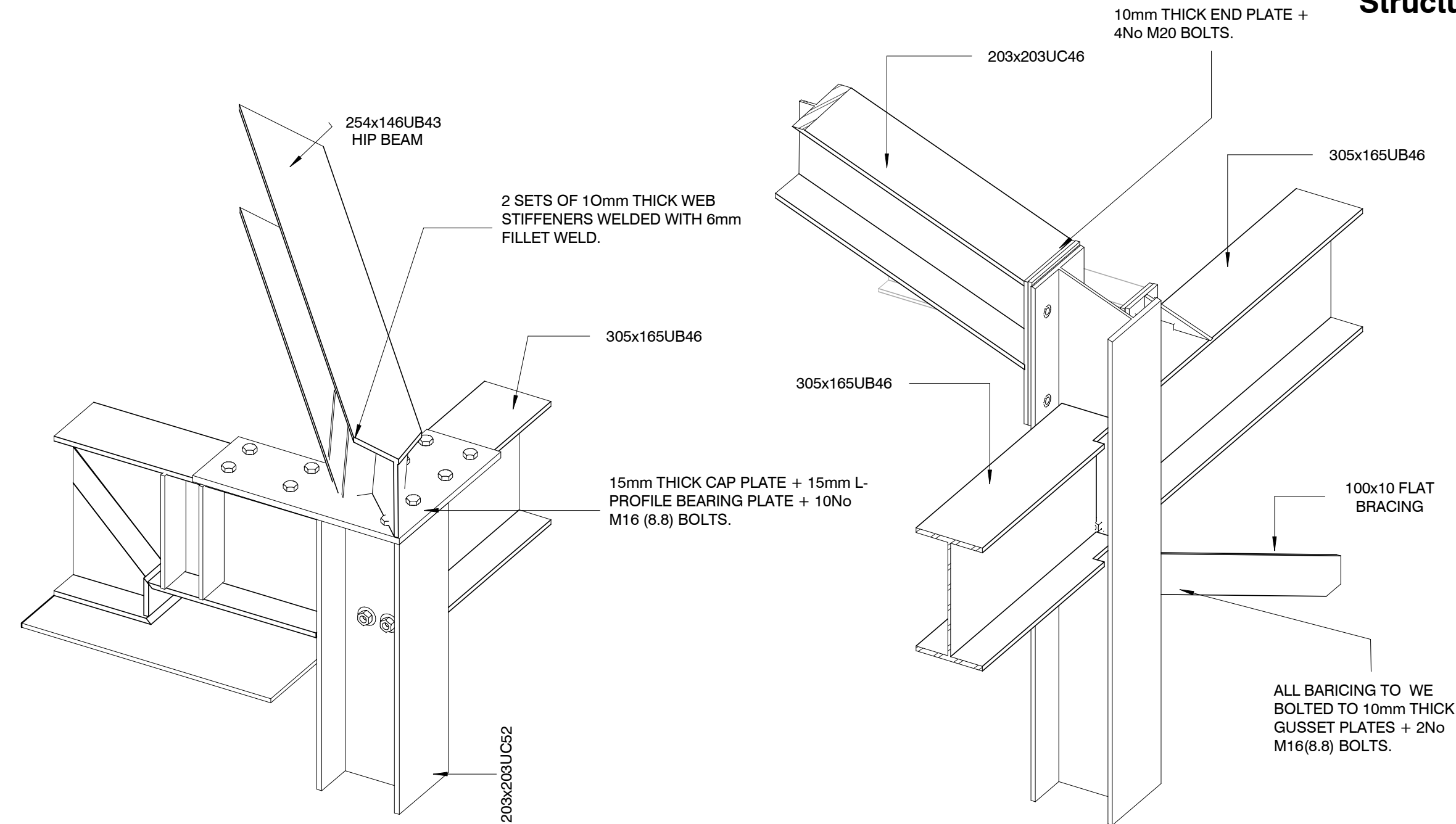
**Typical Apex Detail Grid Lines 3**  
(Scale :- @ A1)



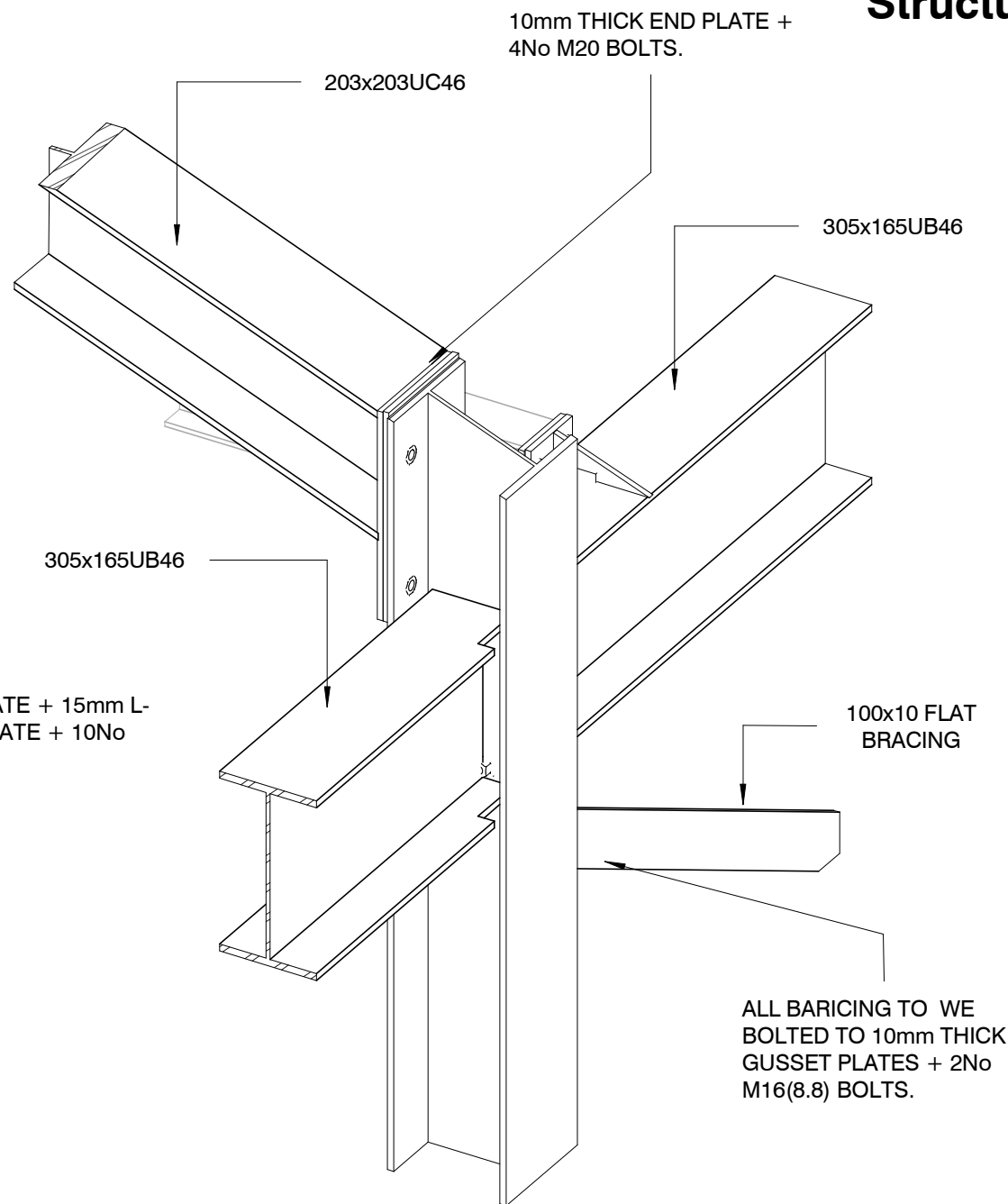
**Typical Rafter Connection Detail Grid Lines A3**  
(Scale :- @ A1)



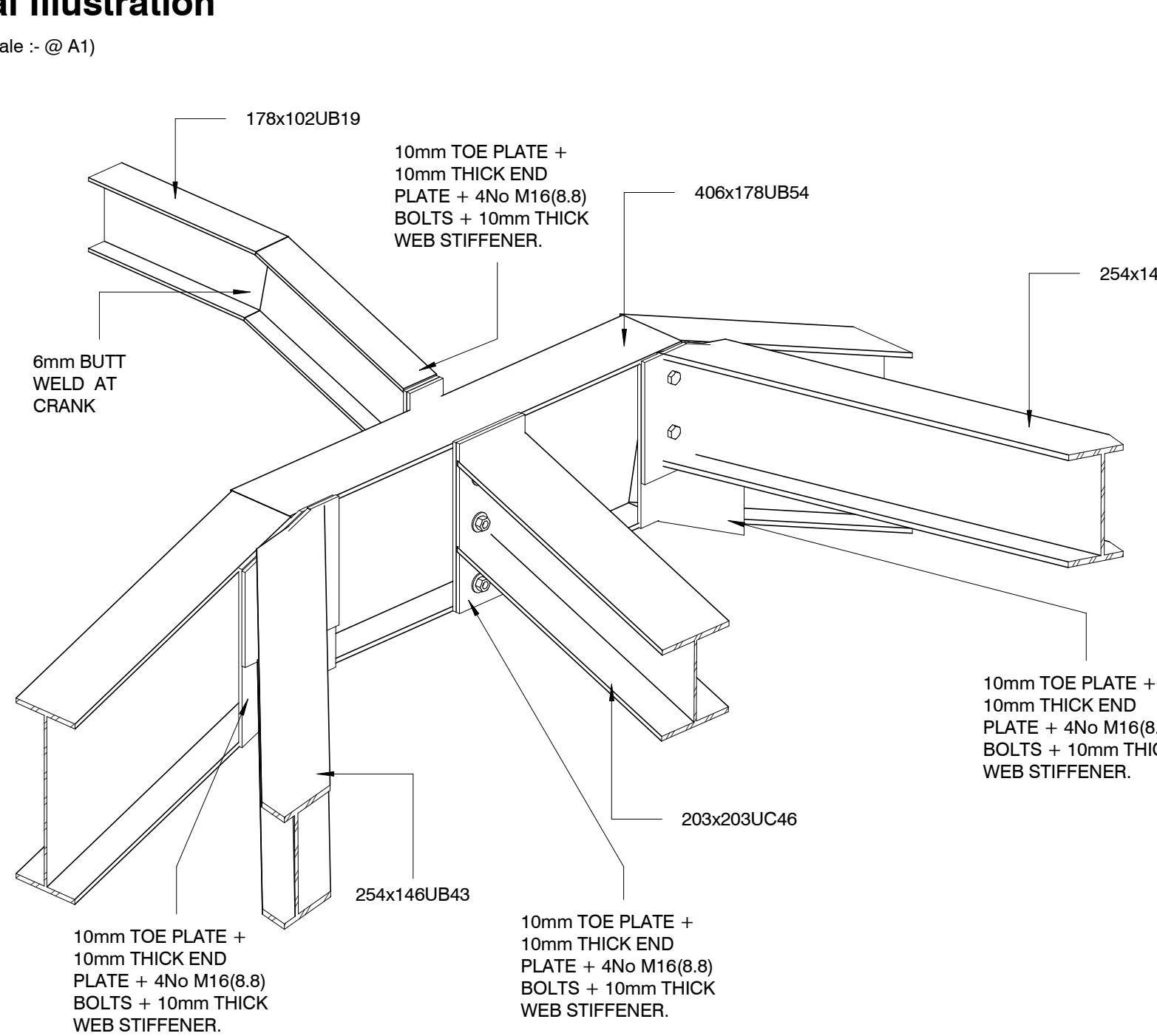
**Structural Illustration**  
(Scale :- @ A1)



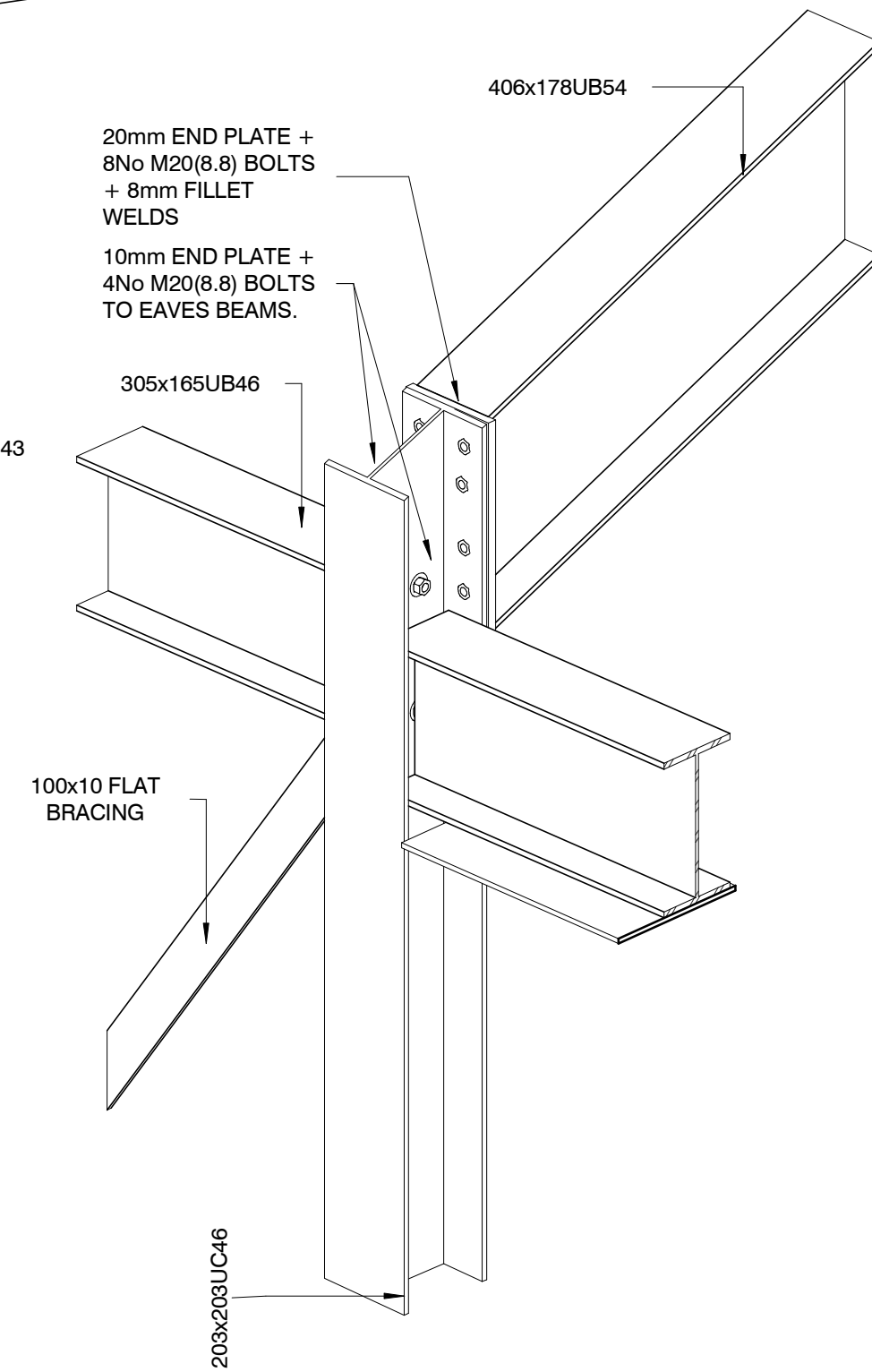
**Typical Hip Beam Connection**  
(Scale :- @ A1)



**Typical Rafter Connection Grid Lines B1**  
(Scale :- @ A1)



**Typical Rafter Roof Apex Connection.**  
(Scale :- @ A1)



**Typical Rafter Connection Detail Grid Lines A2**  
(Scale :- @ A1)

#### NOTES

©

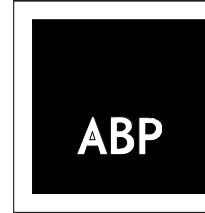
THIS DRAWING & DESIGN IS THE COPYRIGHT OF ALAN BAXTER PARTNERSHIP AND MUST NOT BE COPIED IN PART OR WHOLE WITHOUT CONSENT.

- DO NOT SCALE OFF THIS DRAWING.
- TO BE READ IN CONJUNCTION WITH ALL ARCHITECT'S AND ENGINEERS DRAWINGS.
- ALL DIMENSIONS AND LEVELS TO BE CONFIRMED BY THE ARCHITECT AND CONTRACTOR PRIOR TO THE COMMENCEMENT OF THE WORKS.
- ALL DISCREPANCIES TO BE NOTIFIED IMMEDIATELY TO CONTRACT ADMINISTRATOR AND ENGINEERS.
- TENDER OR BILLING DRAWINGS SHALL NOT BE USED FOR CONSTRUCTION OR THE ORDERING OF MATERIALS.
- FOUNDATION FORMATION LEVELS TO BE INSPECTED AND APPROVED BY THE LOCAL AUTHORITY.

#### PRELIMINARY

Rev	Description	Drn	Chk	Date
A	GENERAL UPDATE	TJM		04-02-2019
0	FIRST ISSUE	TJM		04-05-2018

**ALAN BAXTER PARTNERSHIP LLP**  
CONSULTING STRUCTURAL ENGINEERS  
THE CLOCK BUILDING  
PYMPES COURT  
BUSBRIDGE ROAD  
LOOSE  
MAIDSTONE  
KENT ME15 0HZ  
TELEPHONE: 01622 744263  
FAX: 01622 749270  
EMAIL: mail@abpengineers.co.uk



Project **Leybourne Village Hall,  
Little Market Row, West  
Malling ME19 5QL**

Drawing **Frame Illustration**

Date	05/01/18	Scale	@ A1
Ref	<b>F437 -A1- 02</b>	Rev	<b>A</b>