

3G FTP

Register Field

Test Report

Pitch Location	Thorn Collegiate Academy
Pitch Address	Stockwell Avenue Quarry Bank, Brierley Hill Dudley
Post Code	DY5 2NU
Club Name (If Applicable)	N/A
FA - Site Location / Site ID	BIR007
Pitch ID	Main 3G Pitch
Date Of Construction	2019
Pitch Contact Name	Lee Slater
Contact Email	LSlater@TCA.shirelandcat.net
Client (Name)	Lee Slater
Client Address	Thorn Collegiate Academy Stockwell Avenue Quarry Bank, Brierley Hill Dudley, DY5 2NU
Client Contact (Email)	LSlater@TCA.shirelandcat.net
Test Institute	Labosport Ltd
Test Institute Reference	24-0337-A1
Date of Test	07/06/2024

Test Institute Details

Name	Labosport Ltd
Address	Unit 3 Aerial Way, Hucknall, Nottingham, NG15 6DW
Phone	+44 (0) 115 968 1998
Email	info@labosport.co.uk

Laboratory Director	David Rigby
Engineer On Site	Colin Midgley
Additional Engineers (if any)	-

Prepared by		
Laboratory Director	Name	David Rigby
	Date	21/06/2024
Checked By		
Engineer On Site	Name	Colin Midgley
	Date	07/06/2024

Site information

Description of the Facility	One single 3G pitch located within a school facility.
Current Maintenance Provider	Unknown

Ariel View of the Site (Google Maps or Other)



Test Programme

Properties	Test	Specification
Ball/Surface Interaction	Vertical Ball Rebound	FIFA Quality Program Test Method 01 (2015)
	Ball Roll	BS EN 12234 (2013) / FQP TM 03 (2015)
Player/Surface Interaction	Shock absorption	FIFA Quality Program Test Method 04a (2015)
	Vertical Deformation	FIFA Quality Program Test Method 05a (2015)
	Rotational Resistance	FIFA Quality Program Test Method 06 (2015)
Infill and Free Pile Height	Free Pile Height	FIFA Quality Program Test Method 18 (2015)
	Infill Depth	FIFA Quality Program Test Method 21 (2015)
Construction Requirements	Surface Regularity	BS EN 13036-7 (2003)
	Dimensions	Surveyor's tape
Visual Inspection	Aesthetics	Visual inspection of the surface and surrounding ancillaries

*All test carried out are within the scope of ISO 17025 accreditation with the exception of visual inspections

Test Conditions

Substrate Type	Dynamic	
Surface Type	Long pile synthetic 3G	
Product Name	Unknown	
Surface Condition (Dry/Wet)	Dry	
Infill Type	SBR Rubber	
Shockpad	10mm	
Date of construction	2009	
	Min	Max
Ambient Temperature (°C)	12.4	14.3
	Min	Max
Surface Temperature (°C)	15.9	16.4
	Min	Max
Humidity (% RH)	63.5	70.1
	Min	Max
Max Wind Speed (m/s)	0.8	1.2

Test Results

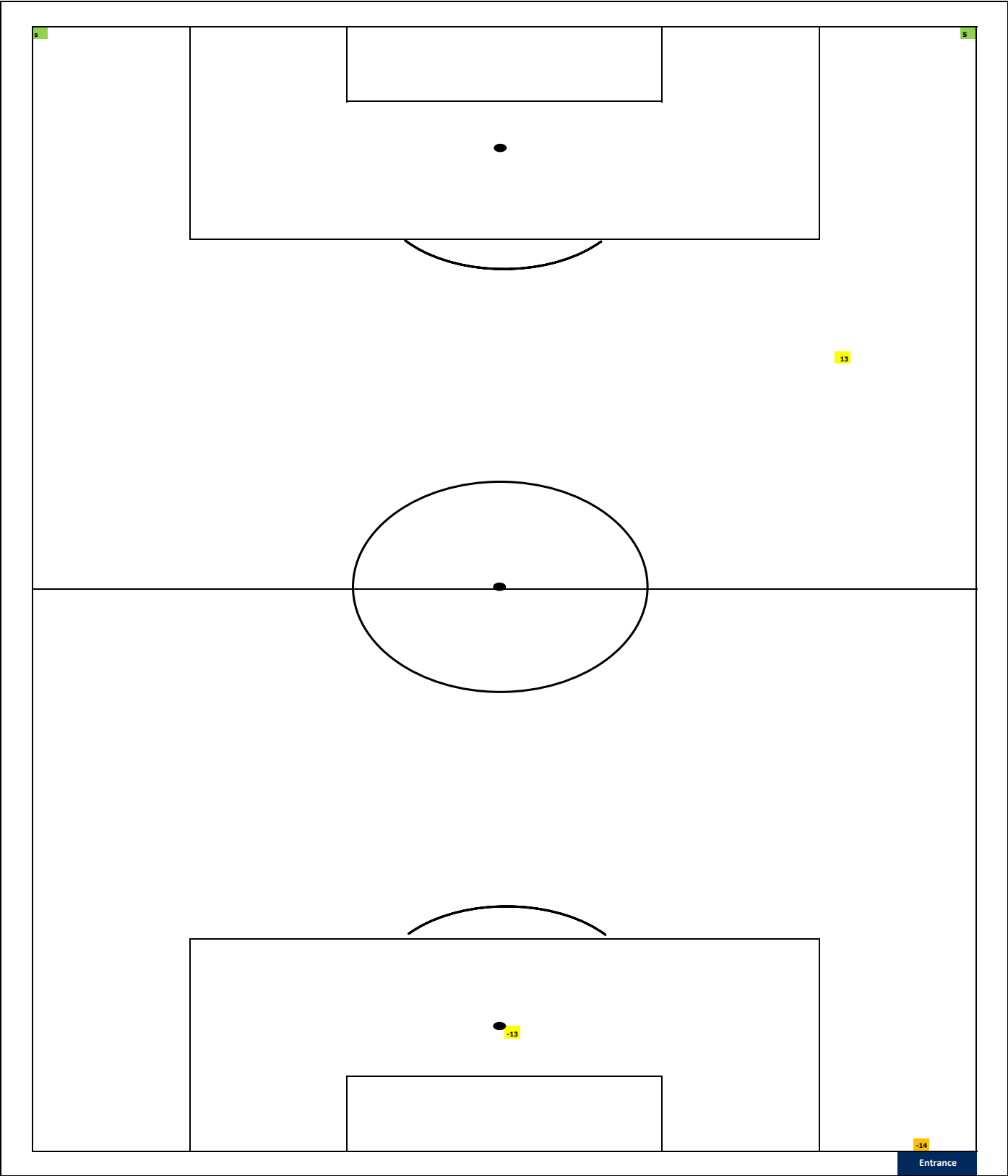
		Positions				
		1	2	3	4	5
Player/Surface Interaction	Shock Absorption (%)	48	51	53	51	51
	Consistency (%)	-3	0	2	1	0
	Vertical Deformation (mm)	5.8	6.3	6.7	6.2	6.4
	Consistency (%)	-8.3%	0.1%	7.0%	-0.9%	2.1%
	Rotational Resistance (Nm)	39	36	40	39	42
	Consistency (%)	-0.2%	-7.8%	0.8%	0.3%	6.9%

Test Results

		Positions				
		1	2	3	4	5
Ball/Surface Interaction	Vertical Ball Rebound (m)	1.00	1.03	0.97	0.99	1.01
	Consistency (%)	-0.2%	3.2%	-3.0%	-1.0%	1.2%
	Ball Roll (m)	14.9	14.3	13.9	14.0	13.8
	Consistency (%)	4.8%	0.6%	-1.8%	-1.2%	-2.4%
		Deviations $\geq \pm 10\text{mm}$				
Construction Requirements	Surface Regularity (See diagram Page 6)	3 undulations				
	Number of Visual Defects	2				
	Average Infill Depth (mm)	1	2	3	4	5
		25	23	30	25	22
	Average Free Pile Height (mm)	4	3	5	4	4
	Dimensions (m)	Parameter		Distance (m)		
		Length		100.0		
		Width		63.0		
		Run-off side		3.0		
		Run-off behind		3.0		

Plan Showing Surface Irregularities > ± 10mm

<div></div> Irregularities ≥16mm	<div></div> Irregularities ≥13 - ≤15mm	<div></div> Irregularities ≥10 - ≤12mm	<div></div> Defect - SEE SITE PICTURES
<div>S</div> Open or Torn Seam	<div>T</div> Tuft Loss	<div>Y</div> Excessively Flat Yarn	<div>L</div> Line Markings Not Straight



Visual Inspection

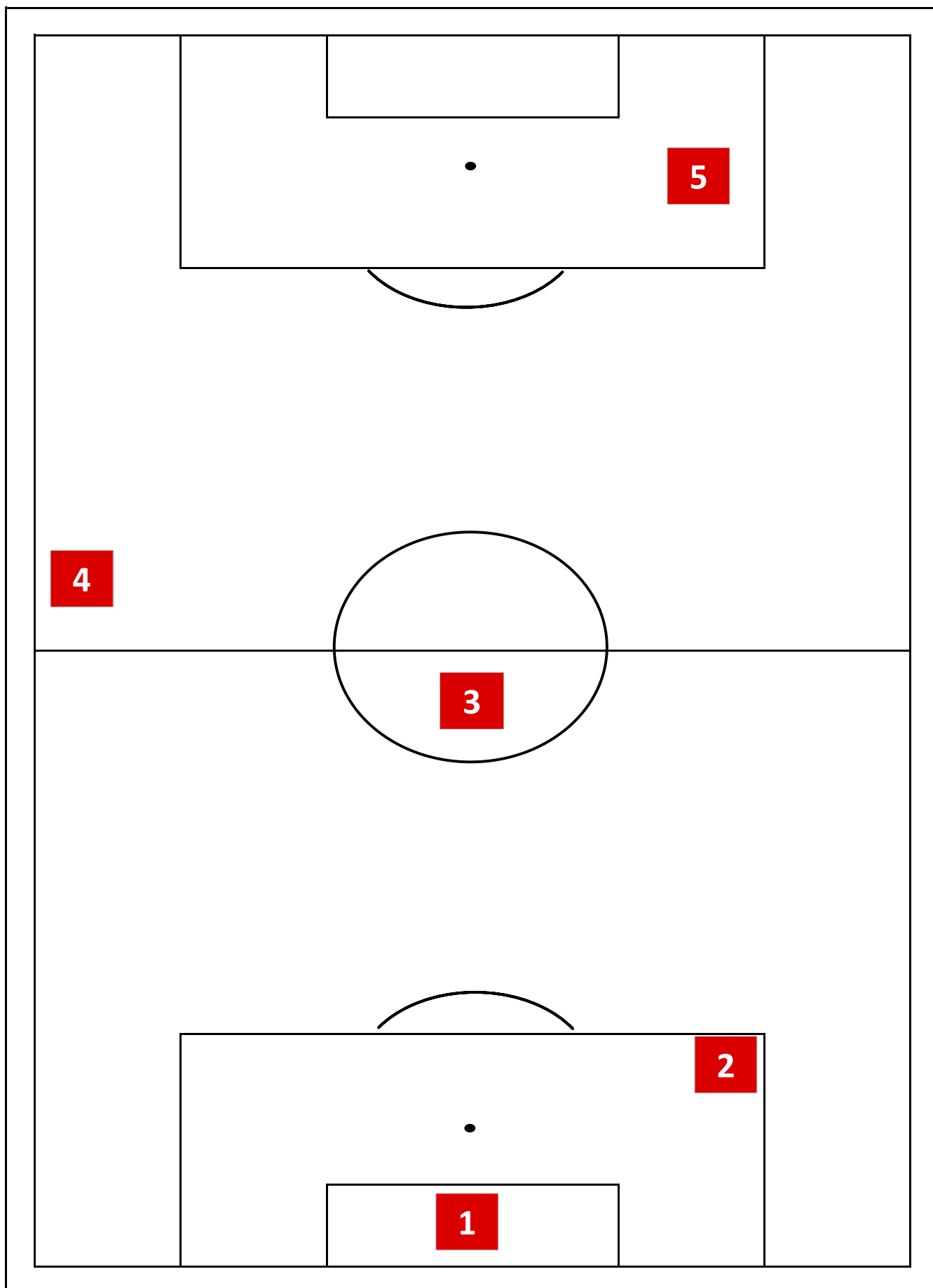
Visual Inspection	Property	Condition
	Yarn/Pile	Pile is flat across the length of the pitch.
	Seams	One corner arc seam is torn open and is no longer attached. Another corner arc seam is beginning to tear open.
	Line Markings	No issues observed.
	Infill	Inconsistent levels of infill. There is low infill around both penalty spots.
	Goals, Equipment, Fencing	Goals and netting are in reasonable condition. Some of the netting needs to be reattached to the goalposts.
	Housekeeping (Litter etc)	There is a bin provided to ensure that litter does not clutter the pitch.

Line Markings

Line Markings	Pitch Size	Line Colour	Number of Pitches
	11 - A- Side	White - Tufted and Inlaid	1
	9 - A - Side	Not present	Not Present
	7 - A - Side	Not present	Not Present
	5 - A - Side	Not present	Not Present
	Rugby	Not present	Not Present
	Hockey	Not present	Not Present

Test Locations

Note: If Small field (less than 3000m²) locations 1, 3 and 4 are tested



Site Photographs - Overview



Halfway line 1 across field



Overview - from corner



Close-up of pile



Prism Gauge

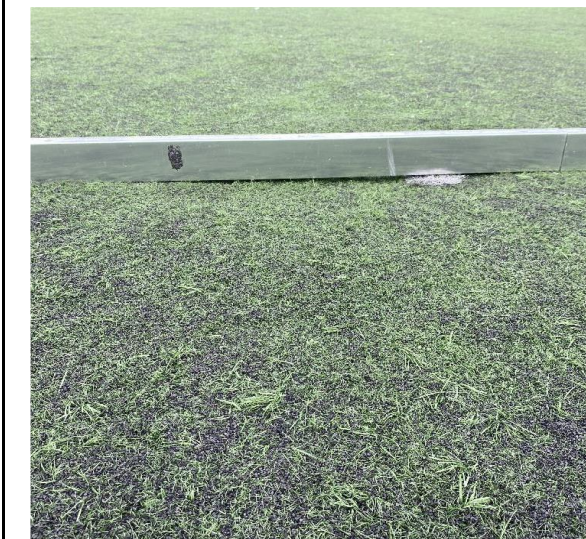
Site Photographs - Example Defects



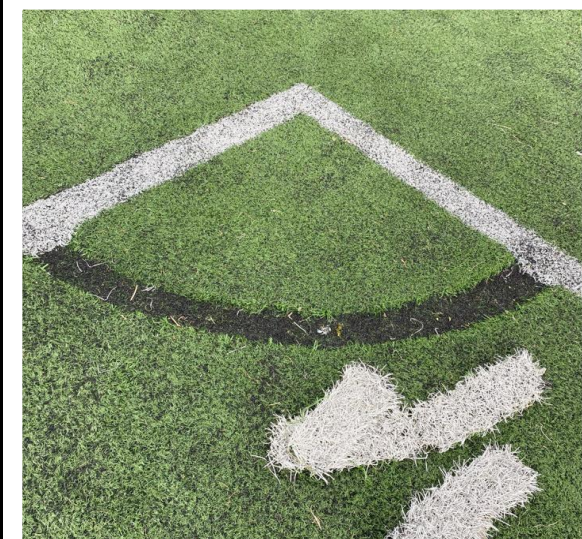
+13mm high spot



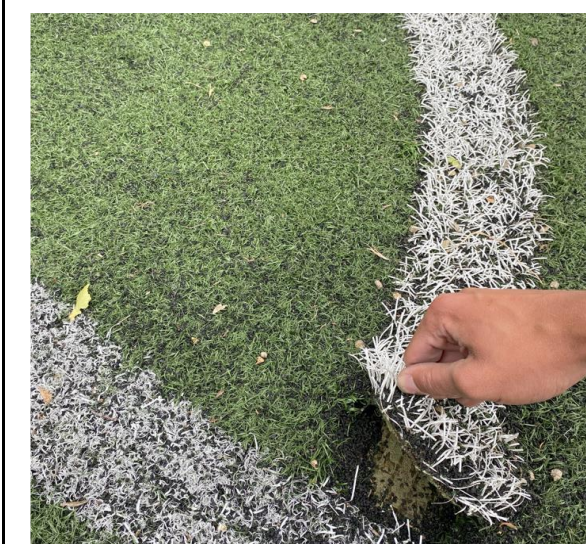
-14mm undulation near entrance



-13mm undulation on penalty spot



Corner arc seam is damaged



Open seam on corner arc