

TENDER



NOTES

- THIS DRAWING IS NOT TO BE USED FOR CONSTRUCTION UNLESS MARKED ABOVE "FOR CONSTRUCTION"
- THE COPYRIGHT ON THIS DRAWING IS RETAINED BY MICHAEL BEARDSALL ASSOCIATES LTD
- THIS DRAWING IS TO BE READ IN CONJUNCTION WITH ALL RELEVANT ARCHITECTS AND ENGINEERS DRAWINGS AND SPECIFICATIONS
- THE CONTRACTOR IS RESPONSIBLE FOR ALL DIMENSIONS AND THE CORRECT SETTING OUT ON SITE. ONLY FIGURED DIMENSIONS ARE TO BE USED
DO NOT SCALE : IF IN DOUBT ASK
- ALL MATERIALS AND WORKMANSHIP TO COMPLY WITH THE CURRENT BRITISH STANDARDS AND CODES OF PRACTICE

NOTES

CONCRETE TO BE GRADE C50.

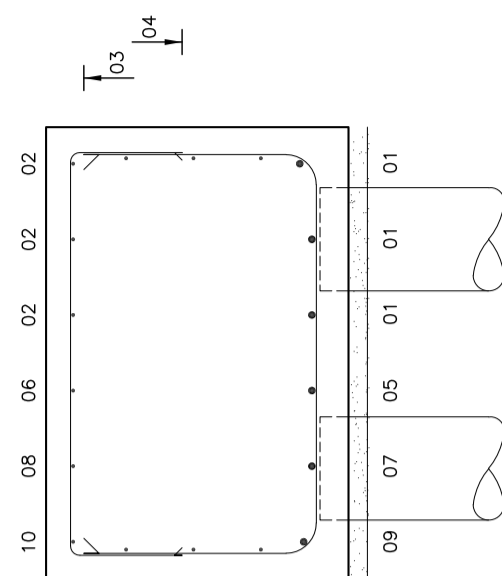
COVER TO REINFORCEMENT TO BE 60mm TO TOP, SIDES AND 75mm BOTTOM.

REFER TO BAR BENDING SCHEDULE 24060/52/01.

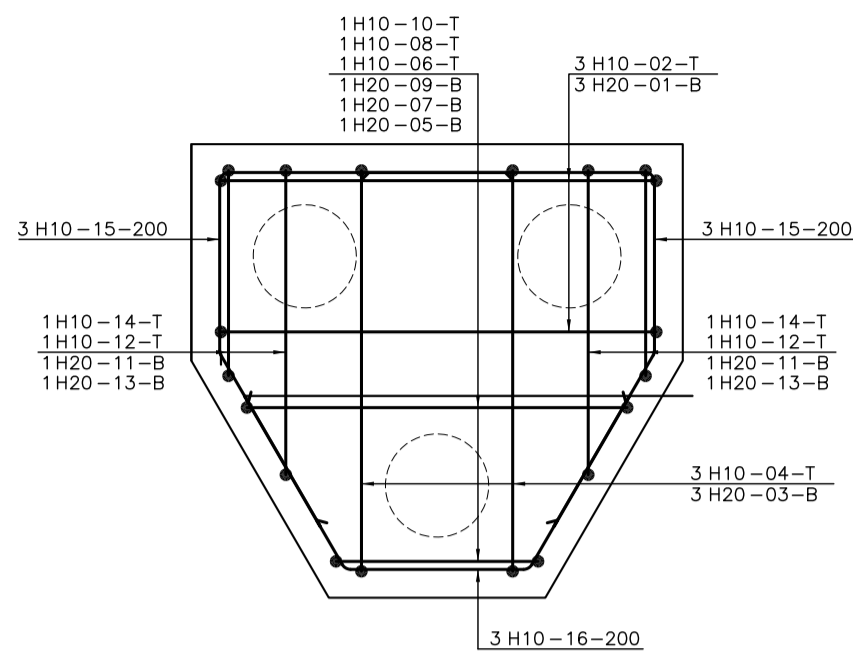
THIS DRAWING IS TO BE READ IN CONJUNCTION WITH MBA DRAWING'S No. 24060/30 & 36.

MINIMUM LAPS

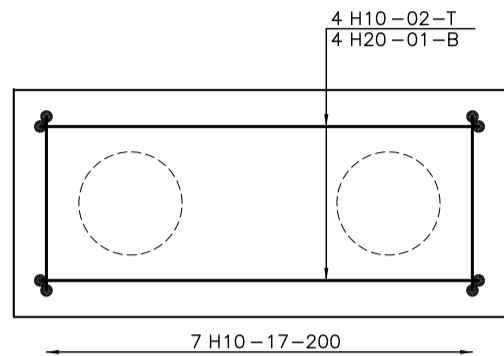
H10 = 400mm
H12 = 500mm
H16 = 650mm
H20 = 800mm
H25 = 1000mm
H32 = 1300mm



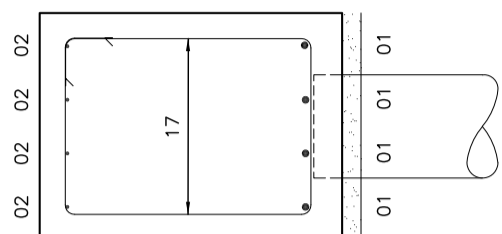
TYPICAL SECTION.
SCALE 1:20



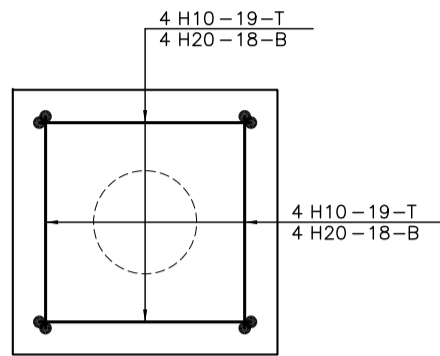
R.C. DETAILS ON TRIPLE
PILECAP.
SCALE 1:20



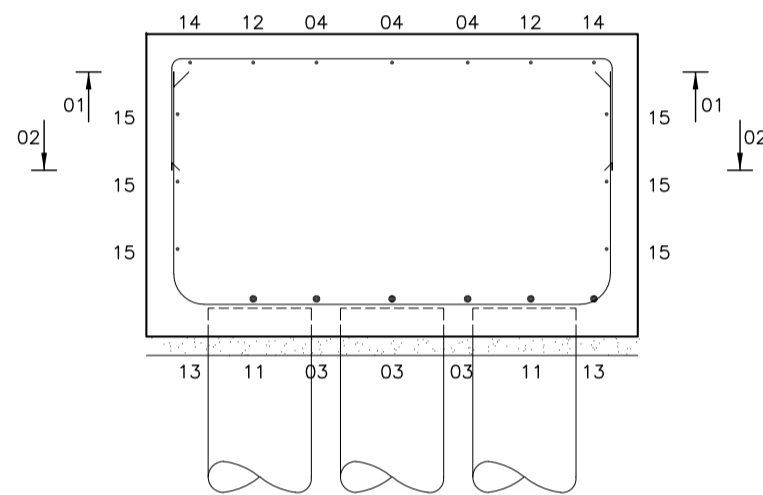
R.C. DETAILS ON DOUBLE
PILECAP.
SCALE 1:20



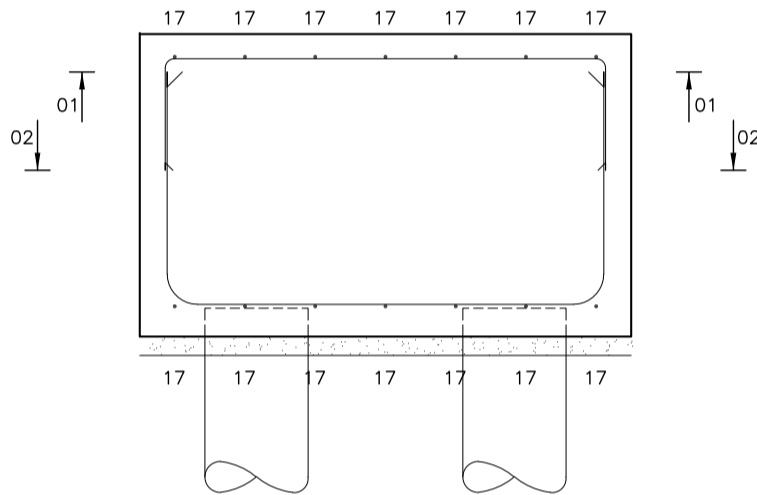
TYPICAL SECTION.
SCALE 1:20



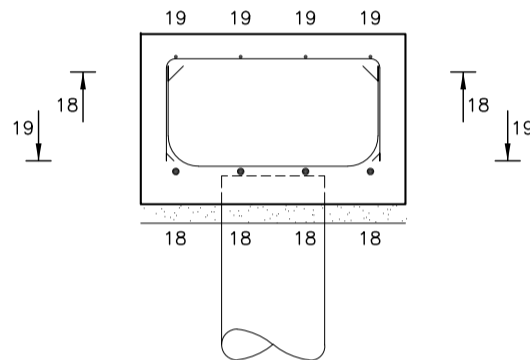
R.C. DETAILS ON SINGLE
PILECAP.
SCALE 1:20



TYPICAL SECTION.
SCALE 1:20



TYPICAL SECTION.
SCALE 1:20



TYPICAL SECTION.
SCALE 1:20

A	14:10:24	ISSUED FOR TENDER			DAF GM
	DATE	REVISION	SUMMARY	BY	CHK
JOB TITLE: PROPOSED ALTERATIONS AT PENZANCE DRY DOCK WHARF ROAD, PENZANCE, CORNWALL, TR18 4BW					
CLIENT:		<div>DRYDOCK PENZANCE CORNWALL</div>			
DETAIL:		R.C. DETAILS ON PILECAP'S & TYPICAL SECTION'S.			
DRN. BY: DAF.					
DATE: OCT.'24		SCALE: AS SHOWN @ A1			
JOB NO:		DRAWING No:		REV:	
24060		52		A	
<div><div>MBA CONSULTING</div><div>Boscawen House · Chapel Hill · Truro · Cornwall TR1 3BN Tel. 01872 260962 Fax. 01872 260963</div></div>					