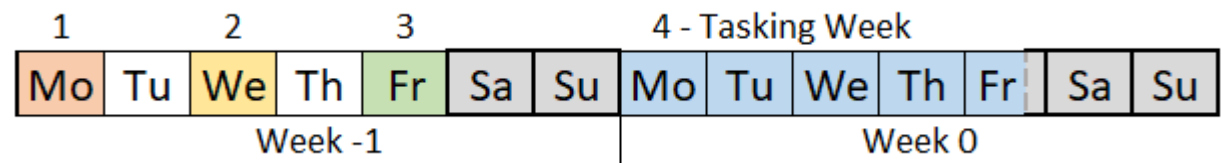


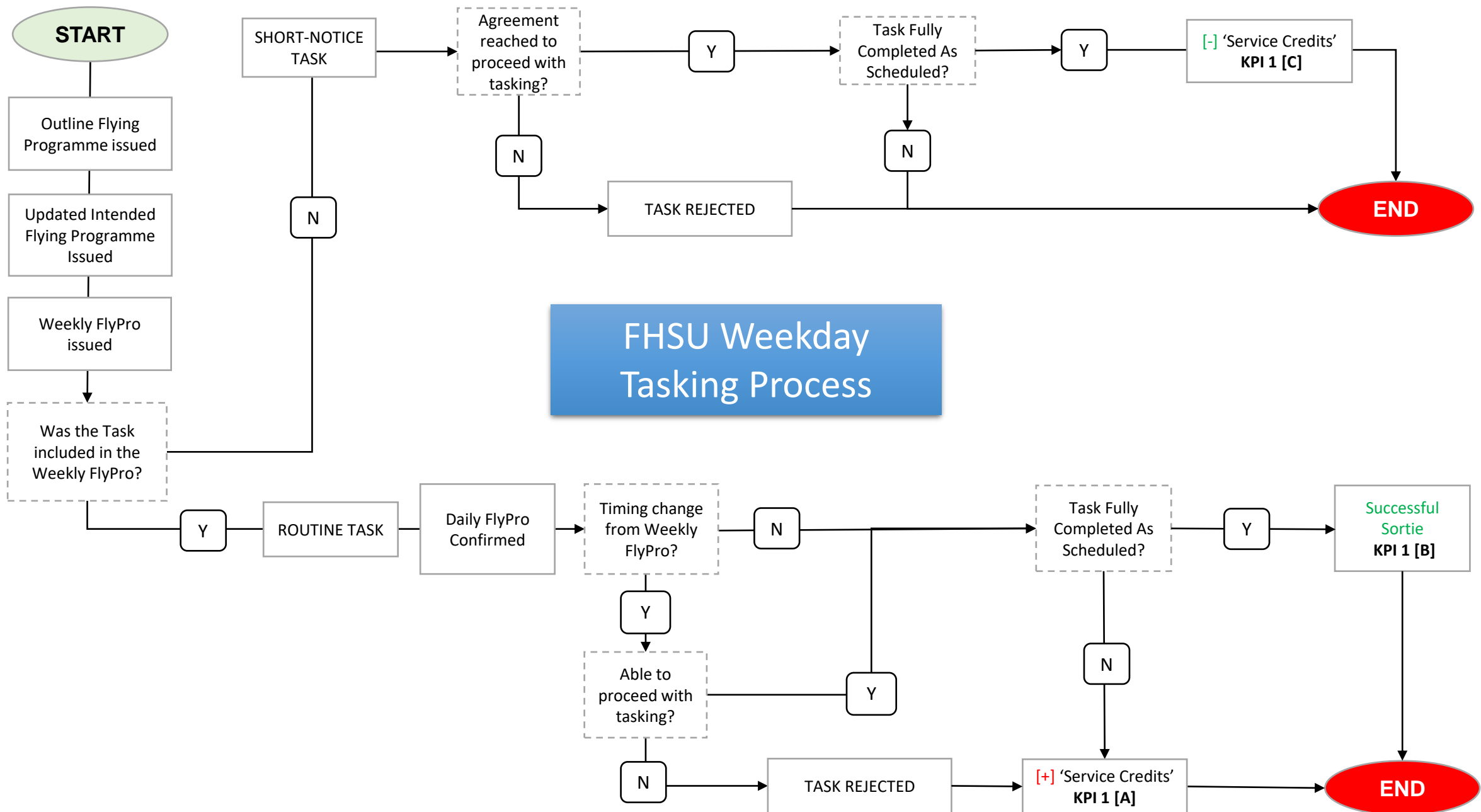
Fleet Helicopter Support Unit (FHSU)

Tasking Notification Schedule

Weekdays

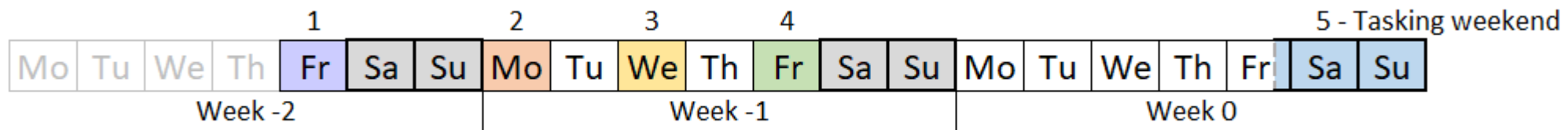


1	Outline Flying Programme issued (no later than (NLT) 1600 Monday the preceding week)
2	Updated Intended Flying Programme issued (NLT 1600 Wednesday the preceding week)
3	Weekly FlyPro issued (NLT 1600 Friday the preceding week)
4	Tasking Week (Daily FlyPros to be confirmed by 1600 on each preceding day)

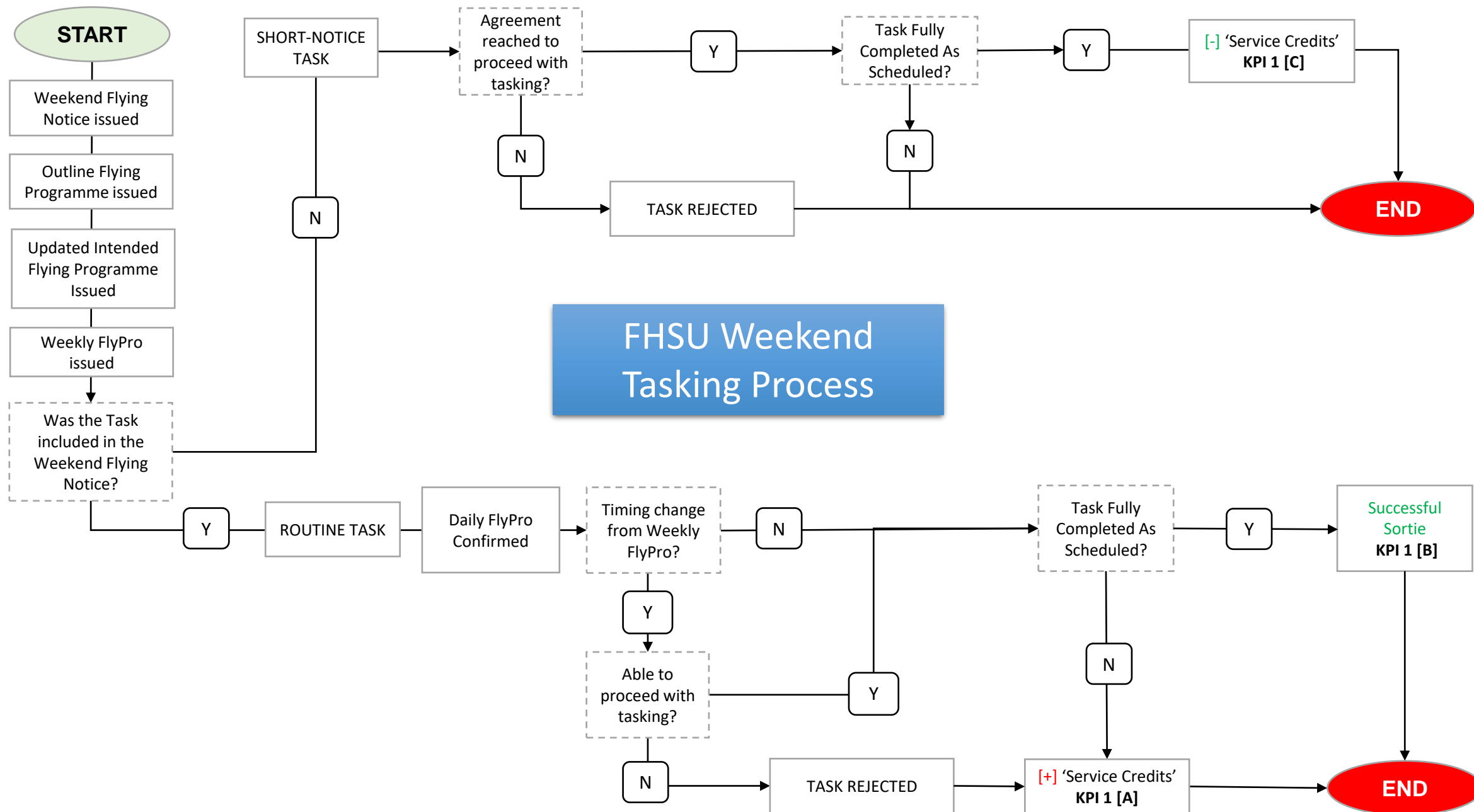


FHSU Tasking Notification Schedule

Weekends



1	Weekend Flying Notice issued (NLT 1600 Friday 2 weeks prior)
2	Outline Flying Programme issued (NLT 1600 Monday the preceding week)
3	Updated Intended Flying Programme issued (NLT 1600 Wednesday the preceding week)
4	Weekly FlyPro issued (NLT 1600 Friday the preceding week)
5	Tasking Weekend (Daily FlyPros to be confirmed by 1600 on each preceding day)



Definitions:

1. Routine Task: Any weekday task that was requested in the Weekly Flypro.
Any weekend task that was requested in the Weekend Flying Notice.
2. Short Notice Task: Any weekday task requested after the Weekly Flypro was issued.
Any weekend task requested after the Weekend Flying Notice was issued.

Core Tasking Hours:

		Start	End	Hours
Weekday	Mon - Thurs	8:00	21:00	13
	Friday	8:00	16:00	8
Weekend	Friday	16:00	21:00	5
	Sat - Sun	8:00	21:00	13