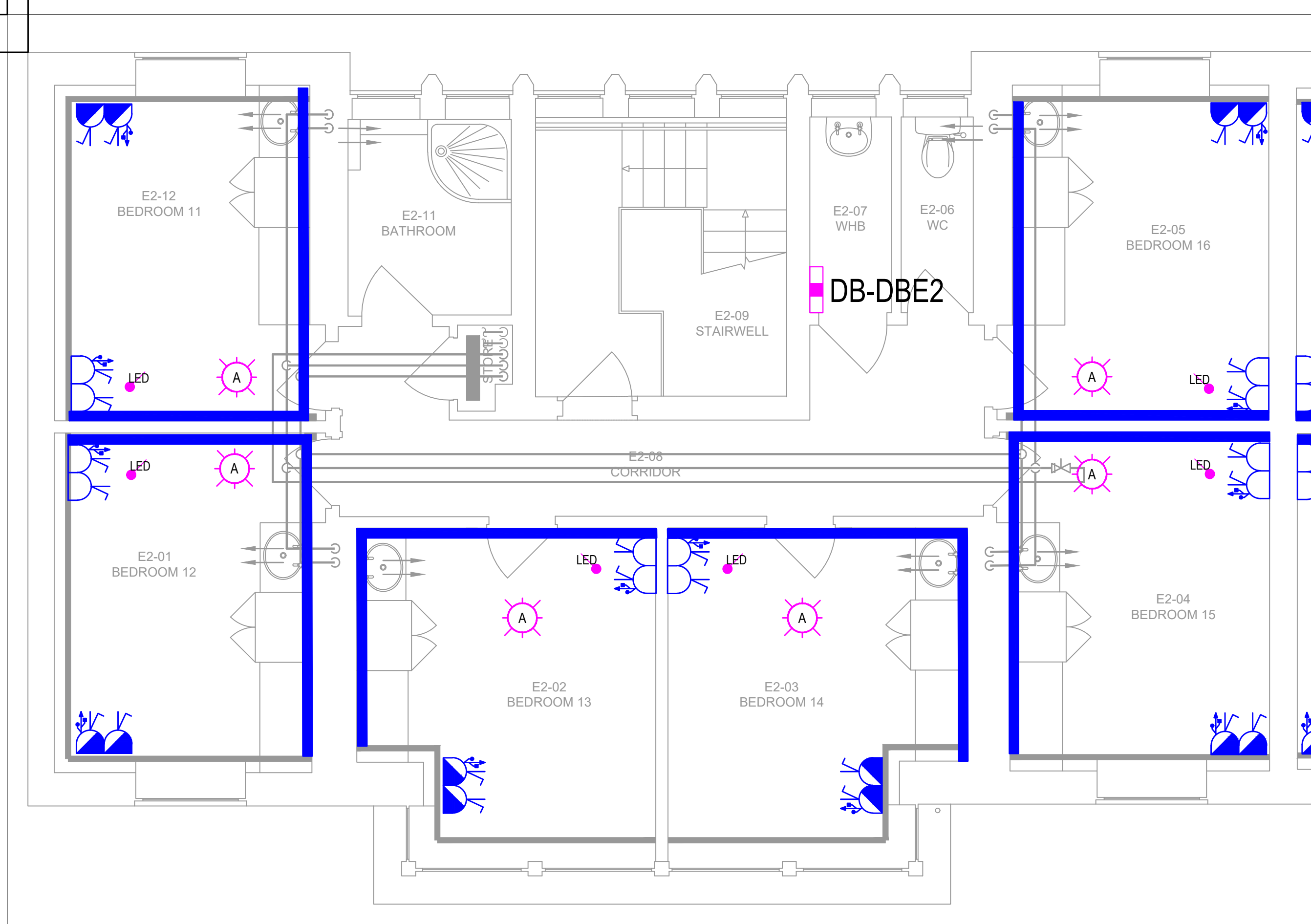


GROUND FLOOR - ELECTRICAL SERVICES LAYOUT



FIRST FLOOR - ELECTRICAL SERVICES LAYOUT



SECOND FLOOR - ELECTRICAL SERVICES LAYOUT

Electrical Services Legend - Edmunds	
	Double Socket with USB-A & USB-C Outlet
	Single Zone RGBW LED Controller
	Detector (A = Absence, P = Presence, D = Daylight)
	Hanging pendant - specified by client/architect
	RGBW LED Lighting Strip and LED light shelf profile
	Wall Mounted Dado Trunking
	Existing Distribution Board
	Existing Distribution Board
NOTE: Design and Supply of the LED Controllers and RGBW Strip by Bright Green Technology, Contact Jonty Rugg, E: jonty.rugg@brightgreentechnology.com, M: 07584 156924	

Electrical Services Scope Of Work - Fit Out	
1. ALLOW TO FULLY SURVEY AND VALIDATE THE EXISTING ELECTRICAL INSTALLATION. PROVIDE A REPORT TO ENGINEER UPON COMPLETION ADVISING OF ANY ISSUES FOUND IN CONNECTION WITH THE DESIGN INTENT.	10. ELECTRICAL CONTRACTOR TO PROVIDE DISTRIBUTION BOARD SCHEDULE WITH PROPOSED CABLE SIZES FOR APPROVAL BY THE ENGINEER BEFORE COMMENCING WORKS.
2. INSTALL NEW USB DSSO WITHIN EACH BEDROOM WITHIN NEW BEDHEAD UNIT (REFER TO ARCHITECTS DETAILS)	11. PROVIDE ALL NECESSARY TESTING AND COMMISSIONING OF NEW ELECTRICAL SYSTEMS.
3. WHERE OUTLETS ARE INSTALLED WITHIN NEWLY INSULATED WALLS CABLING SHALL BE INSTALLED WITHIN RECESSED CONDUIT.	12. PROVIDE UPDATED RECORD DRAWINGS AND OPERATION AND MAINTENANCE MANUALS UPON COMPLETION OF THE WORKS.
4. WHERE OUTLETS ARE INSTALLED WITHIN INTERNAL WALLS THE CONTRACTOR SHALL ALLOW TO CHASE WALLS TO FACILITATE RECESSED INSTALLATION OF CABLING AND TO MAKE GOOD UPON COMPLETION.	13. PROVIDE UPDATED DISTRIBUTION BOARD SCHEDULES UPON COMPLETION OF THE WORKS.
5. WIRING AT HIGH LEVEL SHALL BE CONTAINED ON THE NEW LED LIGHTING SHELF OR WITHIN CEILING VOIDS TO ENSURE ALL CABLING IS RECESSED.	14. CONTRACTOR WILL BE RESPONSIBLE FOR DEVELOPING THE DESIGN FROM THE TENDER DRAWINGS TO COMPLETION TO INCLUDE FINALISING POSITIONS OF ALL OUTLETS WITH THE ARCHITECT, CO-ORDINATING FINAL OUTLET POSITIONS WITH OTHER TRADES, PREPARING CONSTRUCTION ISSUE DRAWINGS AND DISTRIBUTION BOARD SCHEDULES FOR APPROVAL BY THE ENGINEER.
6. ALL SUPPLIES ARE TO BE FED FROM THE EXISTING DISTRIBUTIONS BOARDS SHOWN AND INSTALLED WITH LSOH T&E.	
7. THE LED LIGHTING STRIP SHALL BE INSTALLED ON A NEW LED LIGHTING SHELF TO BE SUPPLIED AND INSTALLED BY THE MAIN CONTRACTOR, THE SHELF SHALL BE OF SUITABLE SIZE TO CONCEAL THE LED STRIP AND NEW CABLING FOR THE NEW POWER AND LIGHTING CIRCUITS.	
8. THE LED CONTROLLERS SHALL BE SECURELY FIXED TO THE WALL.	
9. AN ABSENCE DETECTOR SHALL BE INSTALLED INLINE WITH THE LED DRIVER TO ENSURE LIGHTS SWITCH OFF WHEN ROOMS ARE UNOCCUPIED.	

NOTES - ELECTRICAL SERVICES

- THIS DRAWING IS TO BE READ IN CONJUNCTION WITH THE ELECTRICAL COVER SHEET, TYPICAL ELECTRICAL DETAILS DRAWING AND ELECTRICAL SPECIFICATION DOCUMENT.
- DO NOT SCALE FROM DRAWINGS, REFER TO ARCHITECTS DRAWINGS FOR SETTING OUT
- FIRE RATE PENETRATIONS & UTILISE KINGSPAN SAFIRE FIRE INSERTS ON ALL ELECTRICAL OUTLETS MOUNTED IN FIRE RATED WALLS - REFER TO ARCHITECTS FIRE STRATEGY DRAWINGS.
- CO-ORDINATE ALL SUPPLIES FOR EQUIPMENT WITH FINAL LOCATIONS AND HEIGHTS BEFORE INSTALLATION.
- CAREFUL ATTENTION SHALL BE GIVEN TO THE SOCKET OUTLET SYMBOL DENOTING THE REQUIREMENT FOR INTEGRATED USB A&C OUTLETS
- LAYOUT IS TO BE FULLY COORDINATED WITH EXISTING CONDITIONS, ARCHITECTURAL DETAILS AND OTHER SERVICES - FINAL LAYOUT TO BE APPROVED BEFORE COMMENCING INSTALLATION.
- INSTALL EQUIPMENT AND SERVICES ACCORDING TO MANUFACTURER'S INSTRUCTIONS AND IN HARMONY WITH APPLICABLE CODES & STANDARDS

Rev	Description	Date
Client	Bedford College Group	
Site	Shuttleworth College, Old Warden Park, SG189DX	
Project	Halls of Residence - Fit Out	
<div><p>Pandaces Construction & Engineering Services Ltd</p><p>www.pandaces.co.uk T: 01908 991130</p></div>		
Title	EDMUNDS ELECTRICAL SERVICES LAYOUT - FIT OUT	
Number	02-15-E-LX-01	
Revision T00	Date 01/12/23	
Scale 1:100 at A1	Status Tender	

