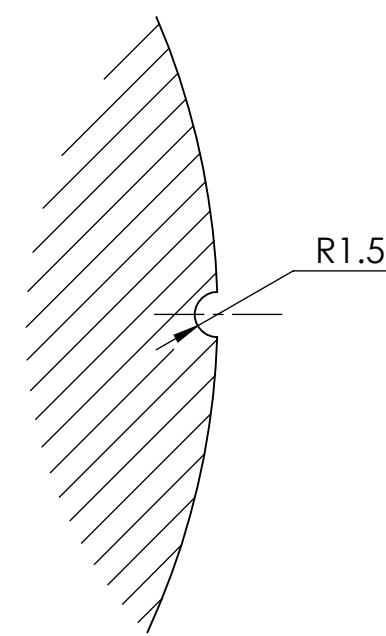


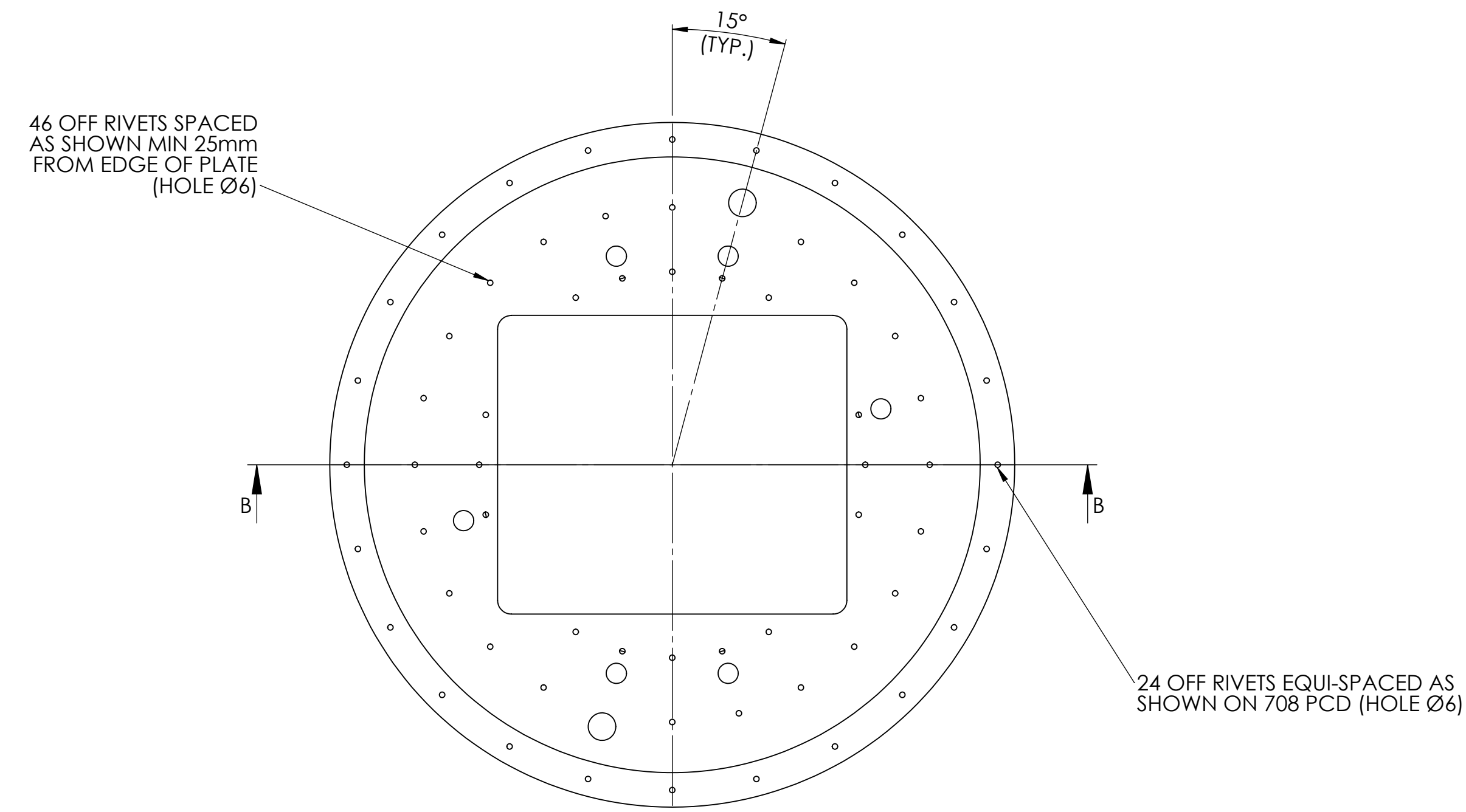


Technical drawing of a mechanical part, likely a shaft or pin, showing dimensions and tolerances. The drawing includes a side view and a cross-sectional view. Key dimensions include diameters of 130 and 100, lengths of 55, 45, and 25, and various angles (5x45°, 3x45°). Surface finish symbols (0.8) and material specifications (98 988 G6, 99 996 G6) are also present.



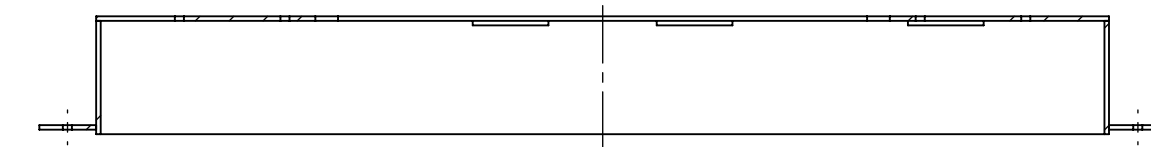
PART SECTION A-A  
SCALE 2:1

ITEM	DESCRIPTION	SCALE	MASS	MATERIAL
3	TRUNNION	1:2	21 kg	BS 2S 143C



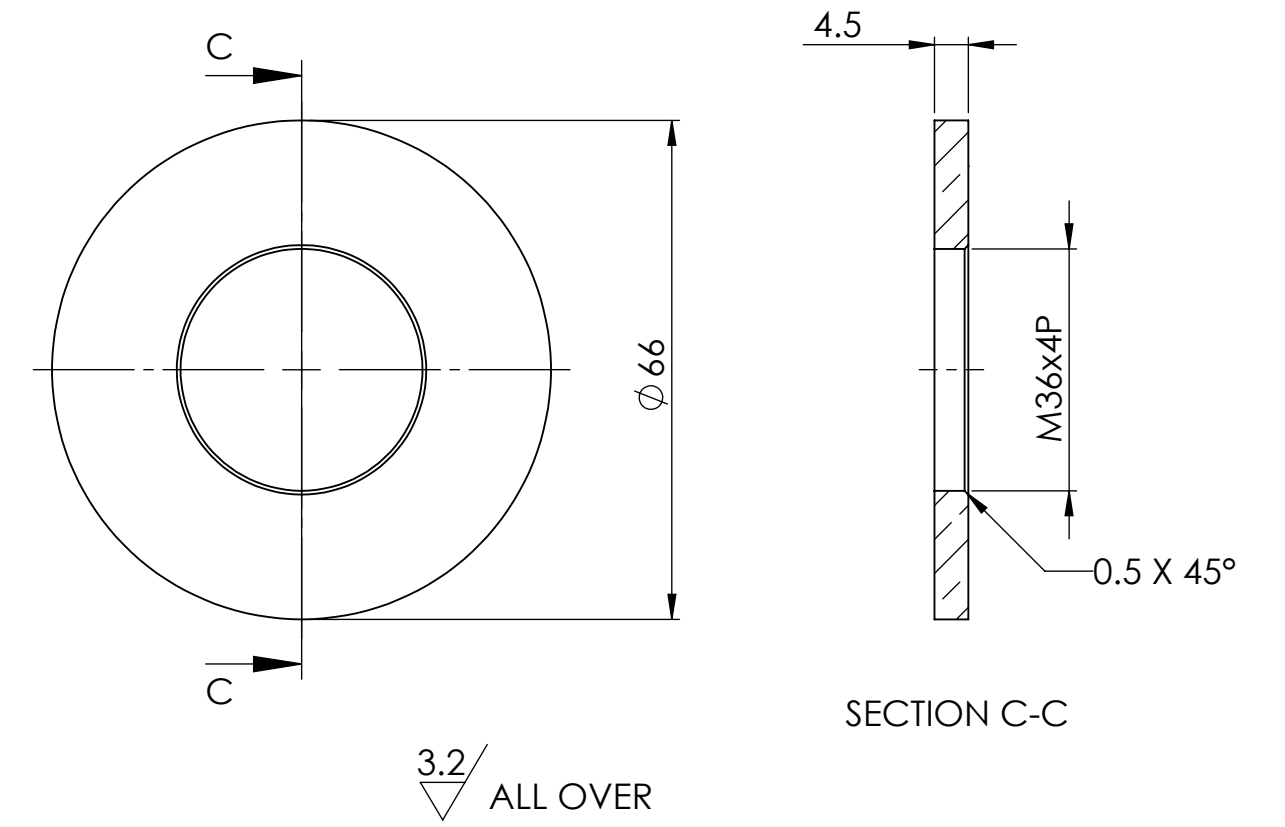
NB. HEAT SHIELD TO BE  
WELDED AFTER COMPLETION  
OF ALL RIVETING

SECTION B-B  
SCALE 1 : 5



0 NF 1234335 - DETAIL G

SHOCK ABSORBER (SS) CLADDING  
(PRIOR TO FINAL ASSY & WELDING)  
SHOWING POSITION OF RIVETS.  
Ø6mm HOLES TO BE DRILLED IN  
CONJUNCTION WITH AL. SHOCK  
ABSORBER.




FOR FINISH/COATING SEE ITEM 7 THIS DRAWING

ITEM	DESCRIPTION	SCALE	MASS	MATERIAL
17	CAPTIVE WASHER	1:1	-	AL. BRONZE BS EN 12163 CW307G

1. HOLE CENTRES TO BE WITHIN 0.25mm OF TRUE POSITION.  
ANGULAR DIMENSIONS TO BE WITHIN  $\pm 0.3^\circ$
2. ISO THREADS TO CONFORM TO BS 3643 PART 2 - FIT AS STATED.
3. NO GO GAUGE TO: PD33.118, M36x4.0-6g, 60879  
GO GAUGE TO: PD33.342, M36x4.0-6g, 60875

REFERENCE DRAWINGS	
DRAWING No.	DESCRIPTION
0 NF 1234331	GENERAL ARRANGEMENT
0 NF 1234332	PACKAGE BODY DETAILS
0 NF 1234333	PACKAGE LID DETAILS
0 NF 1234335	SHOCK ABSORBER DETAILS

UPDATED ONTO NTS DRAWING TEMPLATE

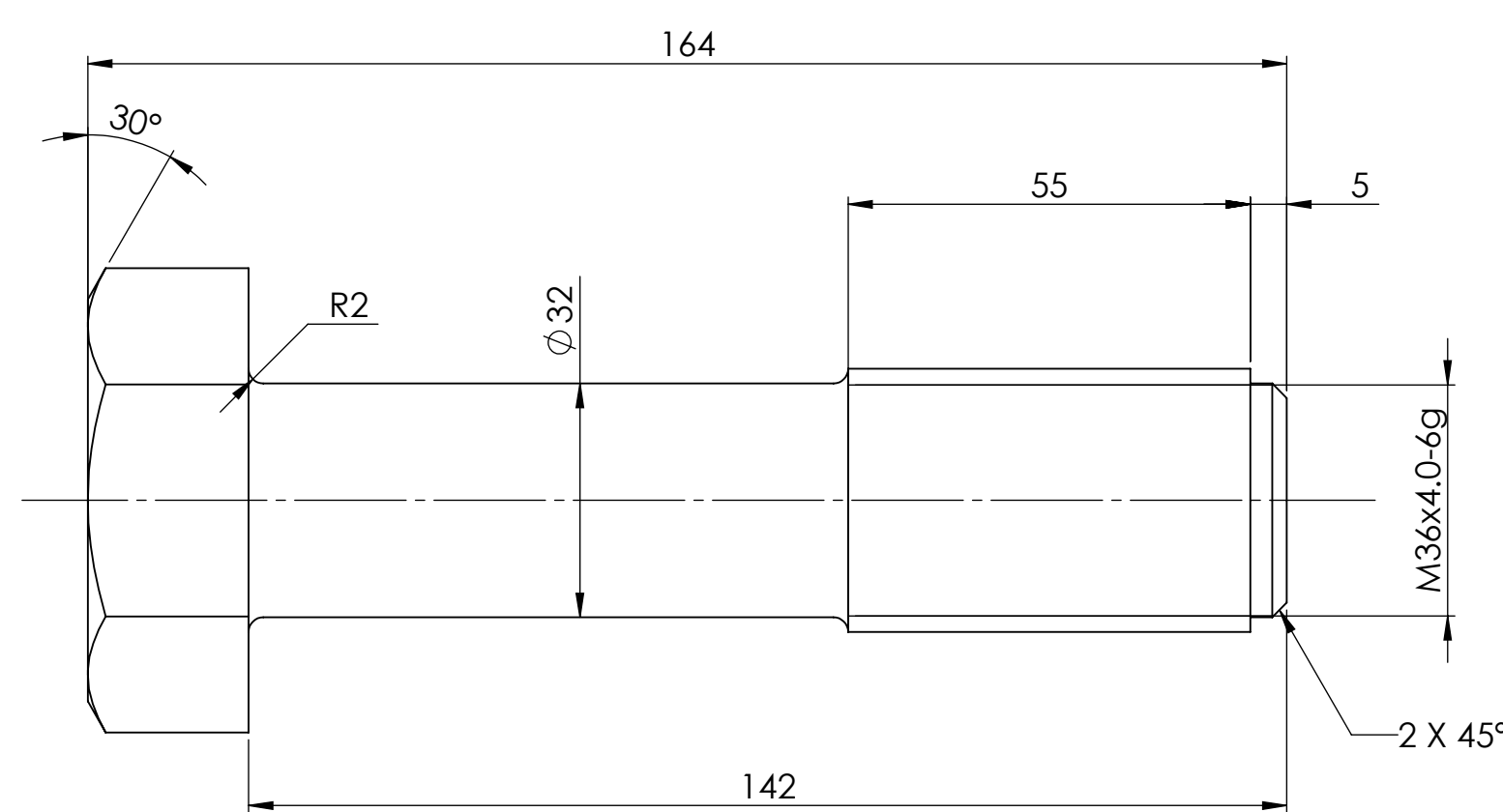
	Drawn	Checked	Level	Approved
Electronic Signature	S.Perry	D.Bennett	3	M.Ridley
 <b>NTS</b> Nuclear Transport Solutions			Approved Date	11/11/2021
			NTS Project No.	
			Design Org.	NTS
			Contractor's Reference No.	N/A
			Scale (UOS)	1:5

This drawing is copyright Nuclear Transport Solutions (NTS) and is issued in confidence for information only, and shall not, in part or in whole, be:

- a) Copied, reproduced or transmitted in any form;
- b) Disclosed to any third party;
- c) Used for any other purpose; without the written consent of NTS.

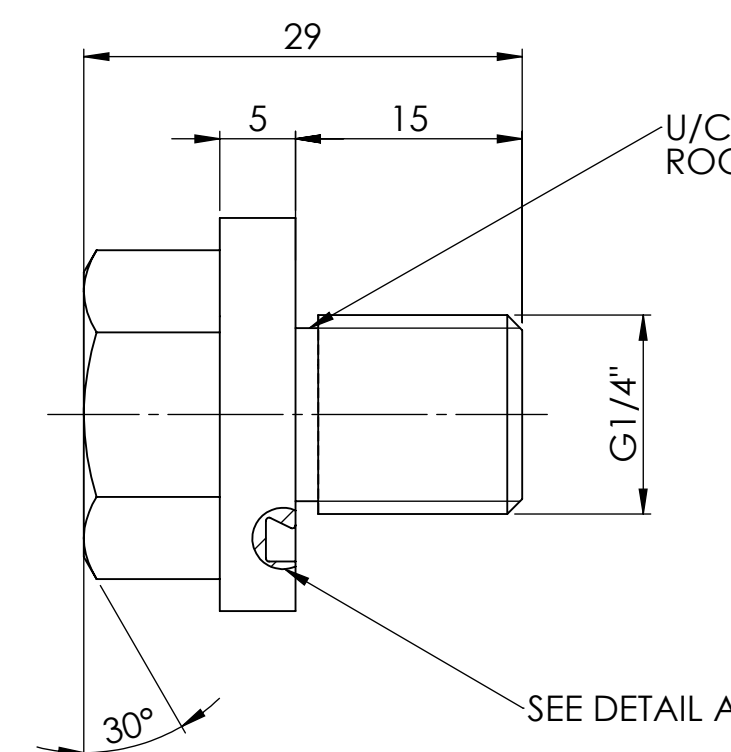
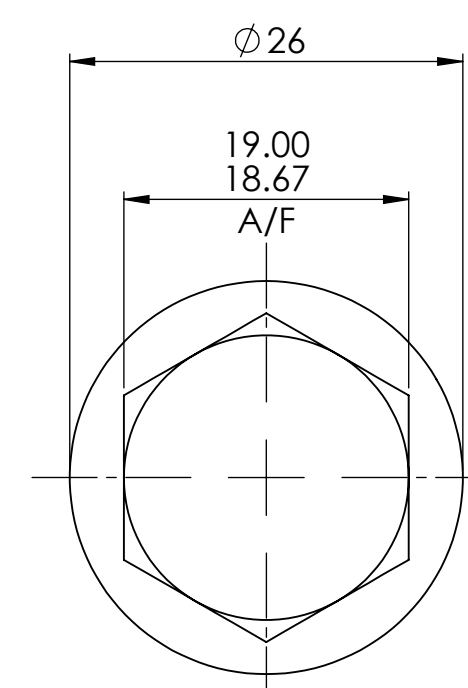
1648C ILW TRANSPORT PACKAGE  
MISCELLANEOUS DETAILS

<b>Drg. No.</b>	0 NF 1234334	<b>Mod.</b>	F
<b>Security Classification</b>	OFFICIAL		

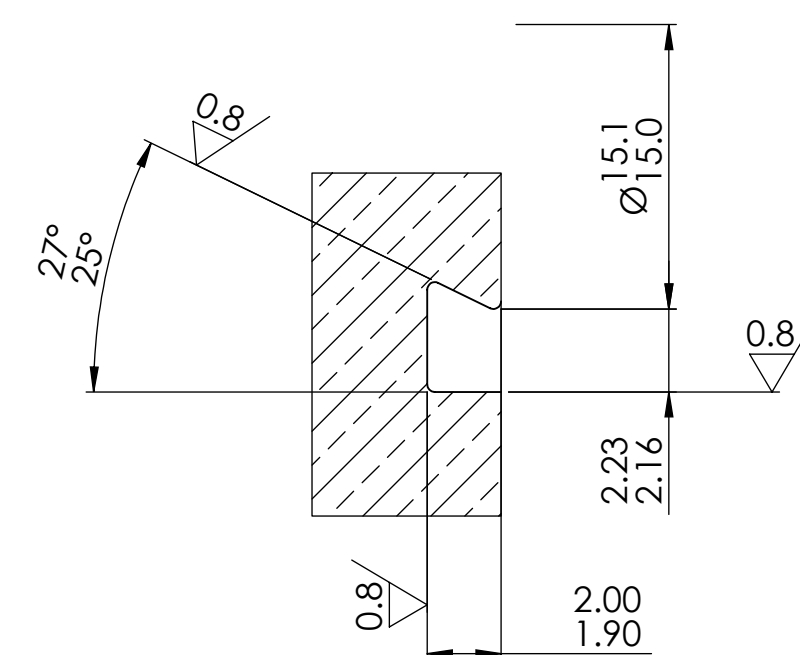


LID BOLT (ITEM 7) AND CAPTIVE WASHER (ITEM 17) TO BE COATED WITH DRY LUBRICANT  
XYLAN 1100 SUPPLIED BY WHITFORD PLASTICS. ALL BOLT THREADS SHALL BE 100% INSPECTED  
BY THE MANUFACTURER PRIOR TO DESPATCH. FOR GAUGE SIZES SEE NOTE 3. AFTER GAUGING,  
THREADS SHALL BE VISUALLY INSPECTED TO ENSURE XYLAN COATING IS INTACT.  
COATING TO BE APPLIED BY:  
ARMOURCOTE SURFACE TREATMENTS Ltd.  
LONG CAUSEWAY  
CROSSGREE  
LEEDS, LS9 0NY

FOR FULL MANUFACTURING DETAILS  
SEE SPECIFICATION No. BNFL PH 74282 E



1.6/ ALL OVER U.O.S



DETAIL A  
SCALE 5 : 1

ITEM	DESCRIPTION	SCALE	MASS	MATERIAL
7	LID BOLT	1:1	21 kg	BS 2S 143C

ITEM	DESCRIPTION	SCALE	MASS	MATERIAL
10	TEST POINT PLUG	2:1	-	AL. BRONZE BS EN 12163 CW307G