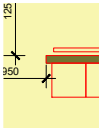


GENERAL NOTES

Extent of Works Area
Highlighted in yellow



Wall Linings

External walls to to be framed out and insulated with 100mm mineral wool insulation, vapour control layer, skimmed MR plasterboard finish. No punctures to this layer.
Approx. 3.0m floor to soffit height.

Stud Partitions

New 70mm timber or metal stud to suit vertical span @ 400mm c/c. Plywood pattresses to suit areas with fixings. 50mm acoustic Isover insulation in all cavities Skimmed 15mm MR wallboard to both faces
Approx. 3.0m floor to soffit height.

Window Openings

Windows to be removed as indicated on drawings (4no.), openings to be closed using 140mm blockwork inner lining and insulated silicone render (200mm mineral wool) to the outer face, recessed by 50mm from brick face. Dark grey (RAL 7016 TBC) to match remaining windows.

External Door Opening (910x2100mm)

New external door opening as indicated on drawing, insulated cavity wall lintel to be installed to support new soldier course of brickwork above (to match existing), brickwork to be made good around opening, concrete cill piece.
New insulated solid powder coated (RAL7016 TBC) steel doorset for contaminants store. 60mm profile depth, all joints mitred, welded and dressed smooth. u-value 1.3W/m2K. 2mm steel plate panel.
Keyed with Euro profile double cylinder, stainless steel heavy duty lever handle and stay open arm.
NEOS or similar spec:
derek.quinn@neosfireblast.com
0191 438 0226 www.neosprotect.com

Internal Door Openings (generally 910x2100mm)

New internal paint grade flush solid doorsets (400kg/m3 core) to Drying Room & cubicles as indicated, pull handle/ push plate, door closer, door stop, kickplates. Thumbturns with indicators on cubicle doors. All stainless steel. Unisex disc signage on doors in stainless steel. Lloyd Worrall or similar spec.

Ceilings

New suspended ceiling, 2.4m height.
Gridded ceilings to be suitable for humid shower environment (all new areas)
Moisture resistant tiles.
No suspended ceiling required in Contaminants Store (exposed soffit).

Electrical Elements (Contractor Design)

New lighting throughout (LED within gridded ceiling generally, bulkhead in Contaminants Store) to achieve 300LUX in all new areas . Ceiling mounted PIR switches to all areas (ensure that adequate number are positioned in locker room to take account of lockers)
New small power (MK Electric sockets). Numbers as follows:
- 2no. double in locker room
- 2no. double in Contaminated Kit Store
- 2no. double in drying room
- 1no. double in each of shower cubicles (away from water sources)
Note also electrical connections required for dehumidifier, heater, and fan in Drying Room.
Blade hand-driers for each basin (4no.)
Hairdryers (Babyliss Salon Pro 2200) for vanity units (2no. with spurred connection)
Existing electrical elements, eg. fire detection, tannoy/ turnout system to be re-fixed

Mechanical Elements (Contractor Design)

De-centralised MVHR units as indicated (Blauberg Vento Maxi 30l/s). Constant trickle ventilation with boost switched by room PIR.
Existing radiators to be removed, heat output to be ascertained for each room and new radiators/ towel rails plumbed to suit (plumbed from ceiling void).
New drying kit by specialist.
(eg. Simon Robinson, Alorair. 07704 509957)
To incorporate fan, heater, & dehumidifier in Drying Room (allow for condensate drain).
Water distribution in wet areas as indicated by sanitaryware teeing from existing network. Copper distribution.
Drainage to be reconfigured to take account of new sanitary positions utilising existing drainage network. This should include the digging up and reinstating of any floors. Notional runs indicated in broken blue line.

Finishes

New finishes throughout as indicated with yellow hatch:
Flooring: Vinyl floor suitable for wetroom (Altro Aquarius 'Walrus'), coved skirting.
Adequate prep to ensure floors are level and able to act as a substrate for vinyl (self levelling screed/ plywood)
Walls: Generally decorated with Dulux Diamond matt white to manufacturers recommendations. Other rooms in works area (Kit Room, Kit Cleaning Room, Corridor, Store) also to be redecorated to match.
Vinyl wall finish around shower areas as indicated on plan (Polyclad Pro PU 'Grey Steel').
Doors & joinery: new solid core flush doorsets (Doors 01-05), architraves, skirtings to be painted with Dulux Diamond Satinwood in accordance with manufacturers recommendations. RAL 7000 for frames, architraves, skirtings. White for doors.
Other joinery in works area (Doors 07-12 & skirtings) to be painted to match.
Mirrors: Bespoke fit safety mirrors to alcove above sinks/ WCs (4no. say 1.5x1.8m) and above vanity area (2no. 1.2x1.8m).
MGP or similar spec:
www.mgpmirrorglassprocessors.co.uk/

Sanitaryware/ IPS

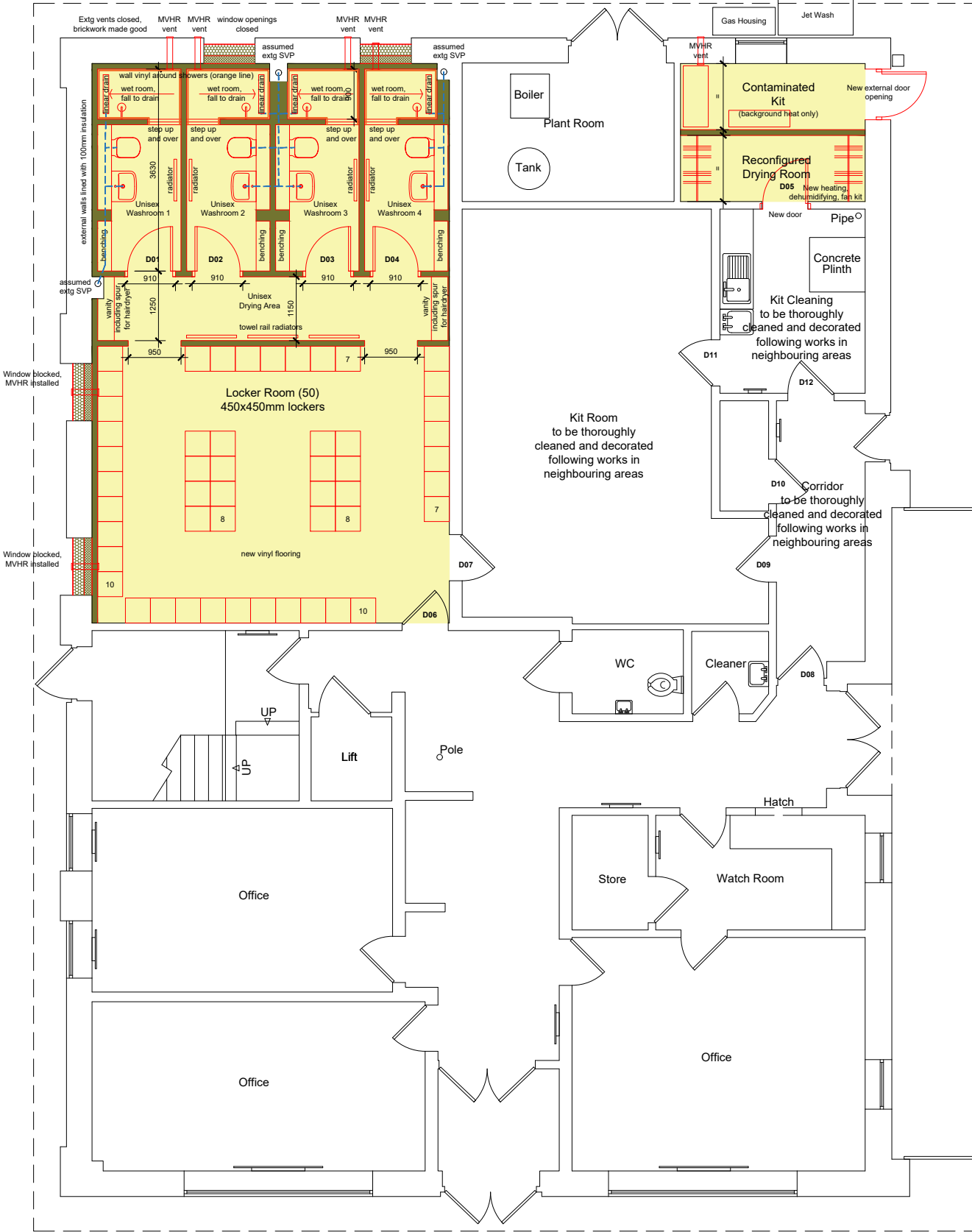
Integrated Plumbing Solution for sinks, concealed cisterns, showers, & vanity units. 100-150mm upstand to rear of basins, full width mirror above. Solid grade laminate spec '*Gunmetal*' colour. eg. Venesta, Bushboard.
Benches in same product range.
Back to wall WC pans: Ideal Standard 'Tesi'
Semi-recessed Basins: Ideal Standard Concept 50cm semi-countertop.
Lever Taps: Ideal Standard Ceraflex with flow regulator, chrome.

Showers

Wet room shower enclosure to be formed creating 1:40 fall to drain.
Step into shower (up & over) to be formed to retain water in wet room,
2no. square aluminium non-slip stair nosings to each upstand (each 56mm wide, full width of opening)
18mm WBP plywood used to frame out with suitable treated timber framework.
Thermostatic bar shower mixers: Ideal Standard Ceratherm T50
Stainless steel linear drain (700mm long) to each shower
Vinyl to both floor and walls within shower with recommended interface junction strips & coved skirting.

FFE

New 450x450x1800mm lockers (50no.) with legs taking account of coved skirting, sloping tops. Keyed locks.
Existing drying room hanging rack to be reconfigured in two pieces.
Contaminant Store: allow for 450mm deep & 300mm deep shelving unit (both 1.1m long), 275kg UDL, 3 shelves. 1.8m high.



Part Ground Floor Plan

Notes:

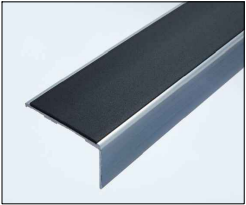
All dimensions to be checked on site.

DO NOT SCALE FROM DRAWING.

Discrepancies ambiguities and/or omissions between this drawing and information given elsewhere must be reported immediately to the architect before proceeding.


THIS DRAWING IS COPYRIGHT.

This drawing is to be read in conjunction with drawings:-



Stair nosing for steps

4	JG	27.06.24	Wall vinyl spec updated
3	JG	20.06.24	Updated for Tender
2	JG	17.06.24	Updated for Tender
1	JG	09.05.24	Drying Room orientation amended, notes updated. Drawing amended to A3 size
Rev	C	R	Date
			AMENDMENT

<div><div>County Durham and Darlington Fire and Rescue Service</div></div>			
County Durham & Darlington Fire & Rescue Headquarters Belmont Business Park Durham DH1 1TW Tel: 0345 305 8383			
Project : Peterlee Fire Station			
Client : CDDFRS			
Drawing : Proposed Plan		Job Number : 121027 PL	
		Scale : 1:100 @ A3	
		Date : February 2024	
Drawing No : AL(0)20		Drawn : JG	Rev : 4